

1. MATERIALS & FINISHES

- A. STAINLESS STEEL, BRASS, AND BRONZE ARE AVAILABLE IN #8 MIRROR, #6 SATIN, #4 SATIN, OR NON-DIRECTIONAL (ANGEL HAIR) FINISH. DAWSON DOES NOT PROVIDE LACQUERED FINISH ON BRASS OR BRONZE PRODUCTS. WET PAINTED OR POWDER COATED DOORS WILL BE FABRICATED FROM GALVANNEALED STEEL. CONSULT FACTORY FOR CUSTOM FINISHES.
- B. ULTRA-NARROW STILES (UNS) ARE FABRICATED FROM 6063 ALUMINUM EXTRUSIONS, MACHINED AS REQUIRED FOR HARDWARE AND ASSEMBLY REQUIREMENTS.
- C. STAINLESS STEEL UNS SERIES DOOR RAILS ARE FABRICATED WITH 13 GA FINISH MATERIALS AND 13 GA INTERNAL COMPONENTS. STILES ARE CLAD WITH 16 GA MATERIALS.
- D. PAINTED UNS SERIES DOOR RAILS ARE FABRICATED WITH 13 GA GALVANNEALED STEEL FINISH MATERIALS AND 13 GA GALVANNEALED STEEL INTERNAL COMPONENTS. STILES ARE NOT CLAD, BUT PAINTED TO MATCH RAILS.
- E. BRASS AND BRONZE UNS SERIES DOOR RAILS ARE FABRICATED WITH .090" FINISH MATERIALS AND .090" INTERNAL COMPONENTS. STILES ARE CLAD WITH 16 GA MATERIALS.
- F. STAINLESS STEEL AND PAINTED GALVANNEALED STEEL FRAMES AND DOOR STOPS TO BE FABRICATED FROM 13 GA MATERIAL. SPACER JAMBS ON EXPOSED HINGE TUBE OPENINGS AND TRANSOM AND SIDELITE GLASS STOPS TO BE FABRICATED FROM 14 GA MATERIAL.
- G. BRASS AND BRONZE FRAMES AND DOOR STOPS TO BE FABRICATED FROM .090" MATERIAL. SPACER JAMBS ON EXPOSED HINGE TUBE OPENINGS AND TRANSOM AND SIDELITE GLASS STOPS TO BE FABRICATED FROM .060" MATERIAL.
- H. STAINLESS STEEL AND PAINTED GALVANNEALED STEEL HINGE TUBES ARE CLAD IN 16 GA MATERIAL. NOTE THAT BALANCED ARMS ARE ONLY AVAILABLE IN STAINLESS STEEL OR BRASS FINISHES.
- I. BRASS AND BRONZE EXPOSED HINGE TUBES ARE CLAD IN .060" MATERIAL. NOTE THAT BALANCED ARMS ARE ONLY AVAILABLE IN STAINLESS STEEL OR BRASS FINISHES.

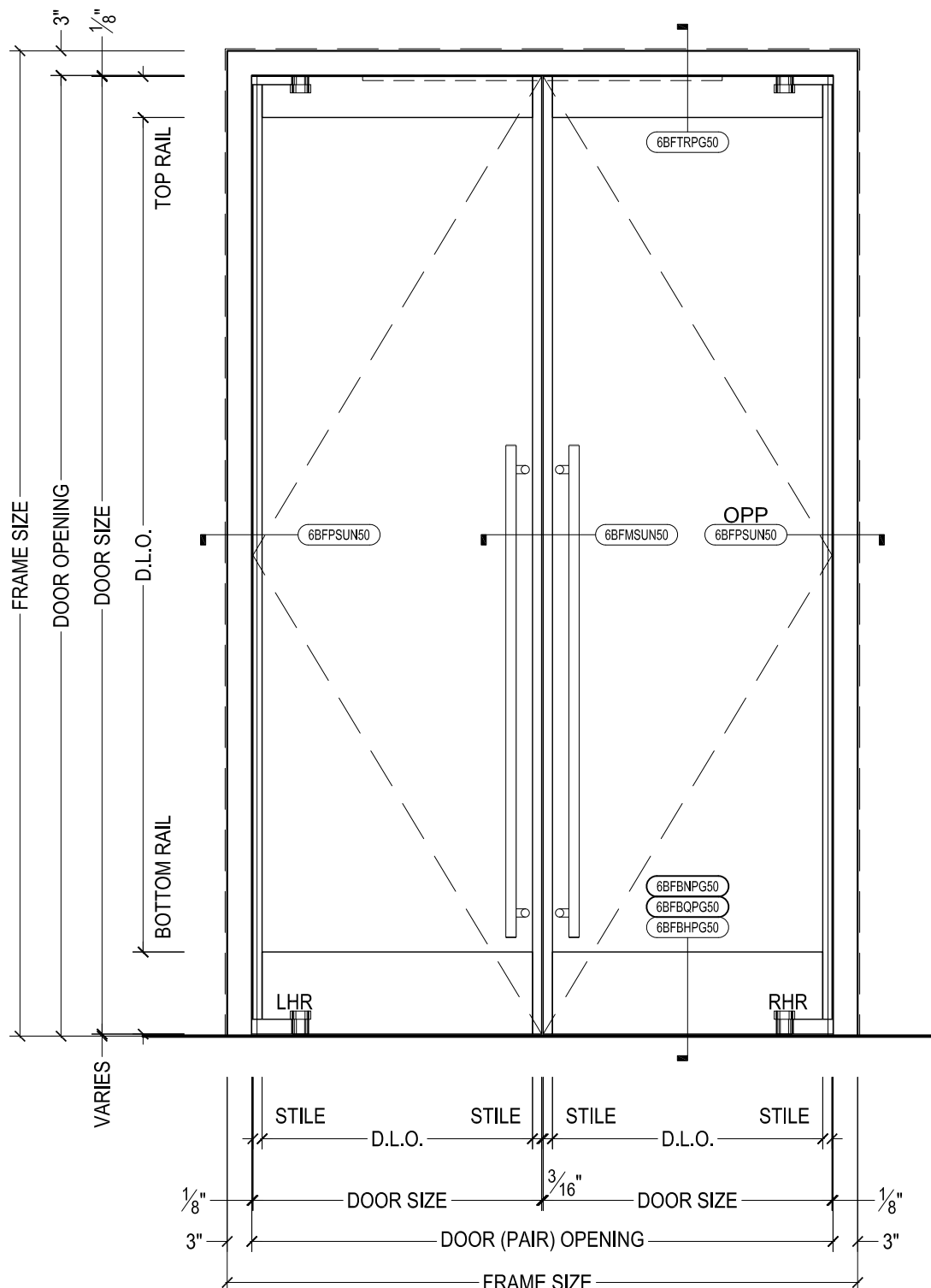
2. STANDARD DIMENSIONS

- A. BALANCED DOORS HAVE A MINIMUM TOP RAIL OF $4\frac{1}{2}$ ". STANDARD UNS STILE EXTRUSIONS ARE $1\frac{1}{8}$ " FACE x $2\frac{1}{8}$ " UNS X 2" RAILS. ALL DOORS HAVE A STANDARD BOTTOM RAIL DIMENSION OF 10" TO MEET ADA CODE. MINIMUM BOTTOM RAIL OF 6" WILL NOT MEET ADA. MINIMUM DIMENSIONS SUBJECT TO CHANGE BASED ON HARDWARE - CONSULT FACTORY.
- B. FRAME PROFILE STANDARD DIMENSIONS ARE 3" FACE x 6" DEPTH. STANDARD HEADER HEIGHT (FACE) FOR AUTO OPERATED BALANCED DOORS IS 6". CONSULT FACTORY FOR CUSTOM SIZES.
- C. SEE GLAZING DETAILS FOR ALTERNATE EXTRUSION AND GLAZING OPTIONS FOR UNS DOORS $\frac{1}{2}$ " TO $\frac{3}{4}$ " CLEAR TEMPERED STANDARD.
- D. BALANCED DOOR UNDERCUT IS AVAILABLE AS $\frac{1}{4}$ ", $\frac{1}{2}$ ", OR $\frac{3}{4}$ ". UNDERCUT IS DRIVEN BY THRESHOLD HEIGHT, THOUGH CAN BE SPECIFIED OTHERWISE.
- E. HORIZONTAL DOOR STOPS TO STOP SHORT ON PIVOT SIDE FOR SWING CLEARANCE. DOOR STOPS FABRICATED $\frac{5}{8}$ " HIGH STANDARD, VARYING WITH HARDWARE REQUIREMENTS. WIDTH VARIES AS REQUIRED. CONSULT FACTORY FOR CUSTOM SIZES AND PROFILES.
- F. MINIMUM BALANCED DOOR WIDTH TO MEET ADA MINIMUM OF 32" CLEAR OPENING IS $35\frac{3}{16}$ ". MINIMUM AUTO OPERATED BALANCED DOOR WIDTH IS 36" DUE TO HARDWARE LIMITATIONS.



825 ALLEN ST • JAMESTOWN, NY 14701 • (716) 664-3811 • WWW.DAWSONDOORS.COM

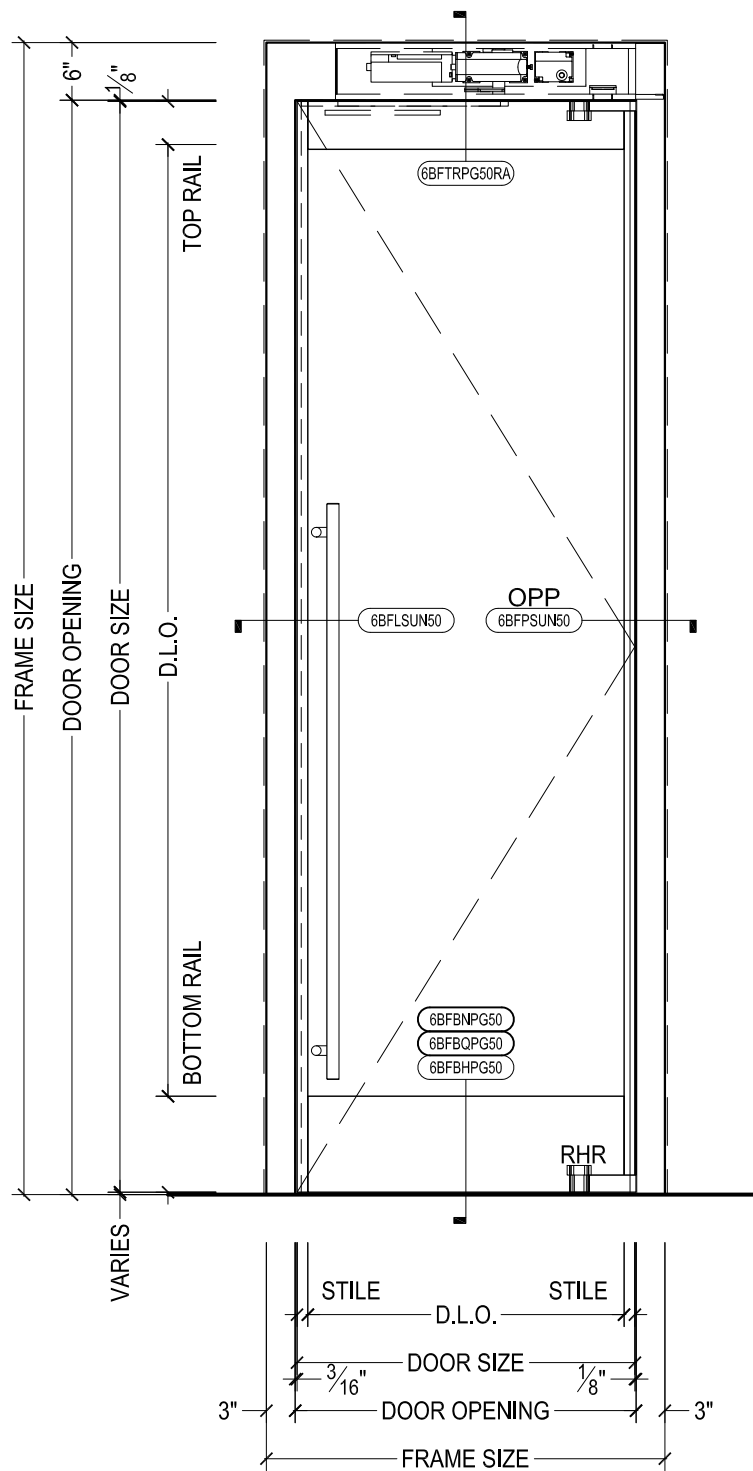
DRAWN BY:	AG	DRAWING DATE:	10/15/19
SERIES #:	006-BAL	DRAWING #:	NOTES 1
DESCRIPTION:	GENERAL NOTES FOR 006 ULTRA-NARROW STILE SERIES DOORS WITH BALANCED HARDWARE		



DAWSON DOORS

825 ALLEN ST • JAMESTOWN, NY 14701 • (716) 664-3811 • WWW.DAWSONDOORS.COM

DRAWN BY:	AG	DRAWING DATE:	10/15/19
SERIES #:	006-BAL	DRAWING #:	EL-MAN-PAIR
DESCRIPTION:	ELEVATION - CLAD ULTRA-NARROW STILE SERIES BALANCED DOORS		



825 ALLEN ST • JAMESTOWN, NY 14701 • (716) 664-3811 • WWW.DAWSONDOORS.COM

DRAWN BY:

AG

DRAWING DATE:

10/15/19

SERIES #:

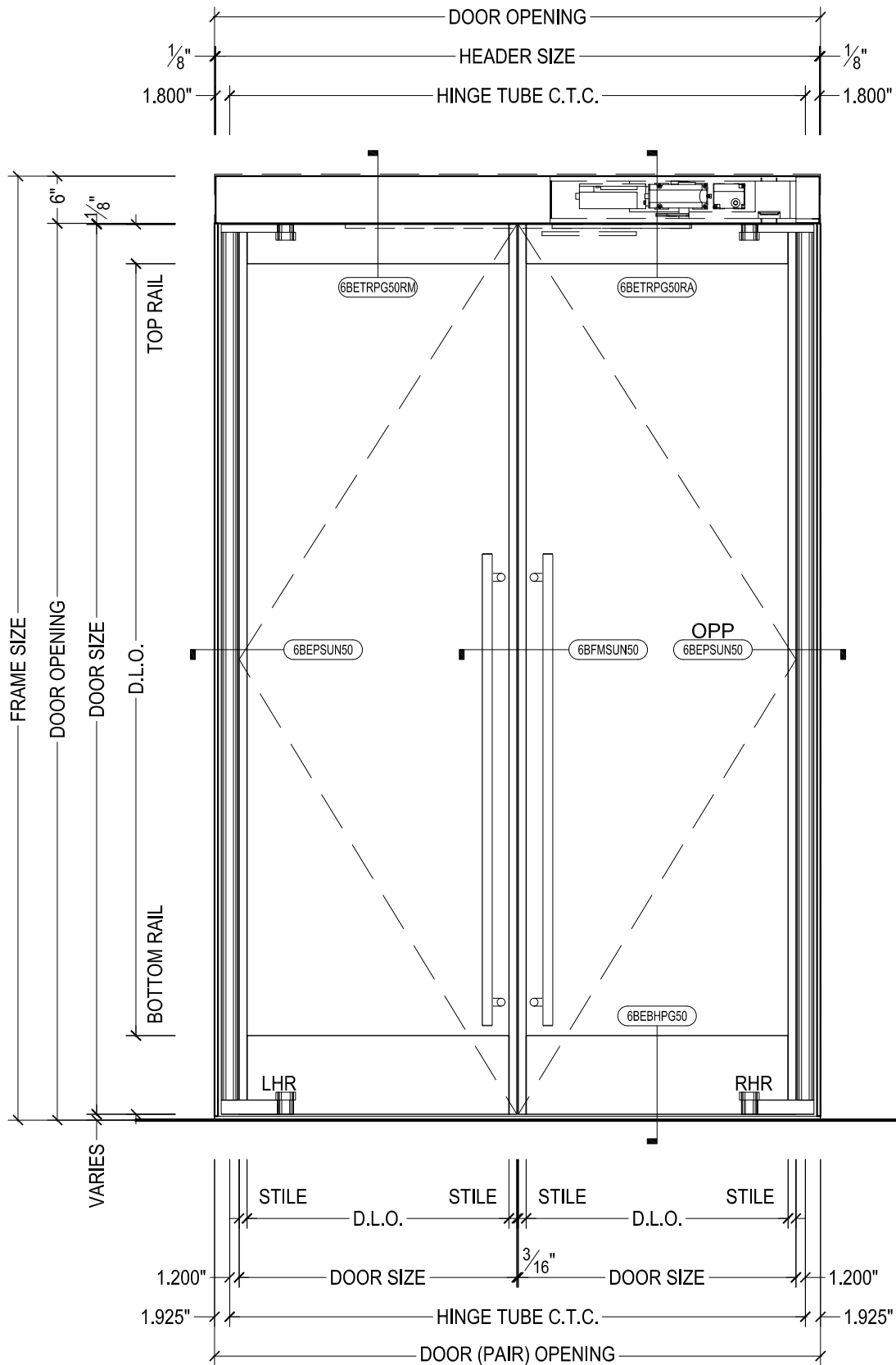
006-BAL

DRAWING #:

EL-AUTO-SIN

DESCRIPTION:

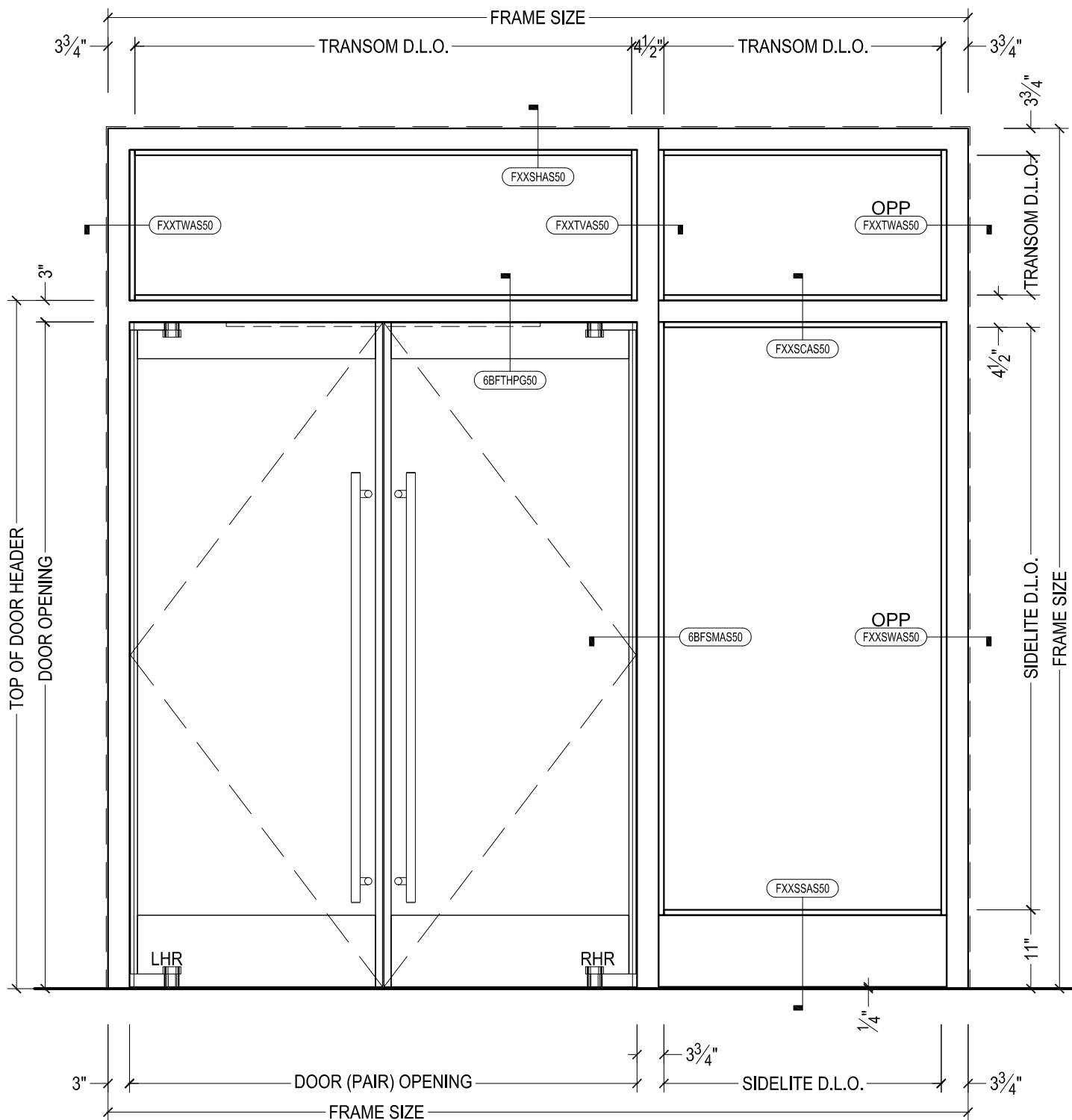
ELEVATION - CLAD ULTRA-NARROW STILE SERIES
BALANCED DOOR WITH RECORD AUTO OPERATOR



DAWSON DOORS

825 ALLEN ST • JAMESTOWN, NY 14701 • (716) 664-3811 • WWW.DAWSONDOORS.COM

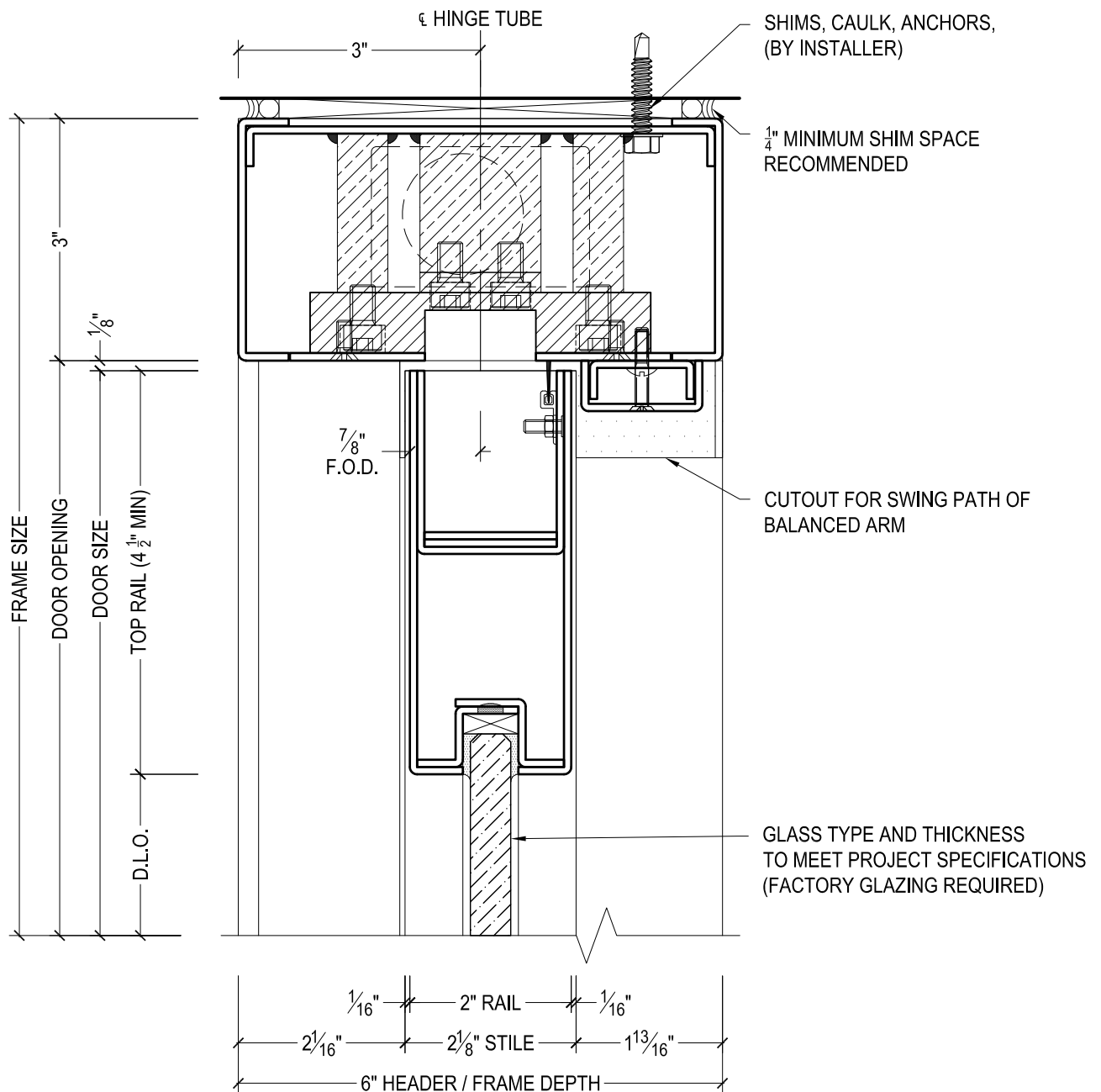
DRAWN BY:	AG	DRAWING DATE:	10/15/19
SERIES #:	006-BAL	DRAWING #:	EL-EHT-PAIR
DESCRIPTION:	ELEVATION - PAINTED ULTRA-NARROW STILE SERIES BALANCED DOORS WITH RECORD AUTO OPERATOR AND EXPOSED HINGE TUBES		



DAWSON DOORS

825 ALLEN ST • JAMESTOWN, NY 14701 • (716) 664-3811 • WWW.DAWSONDOORS.COM

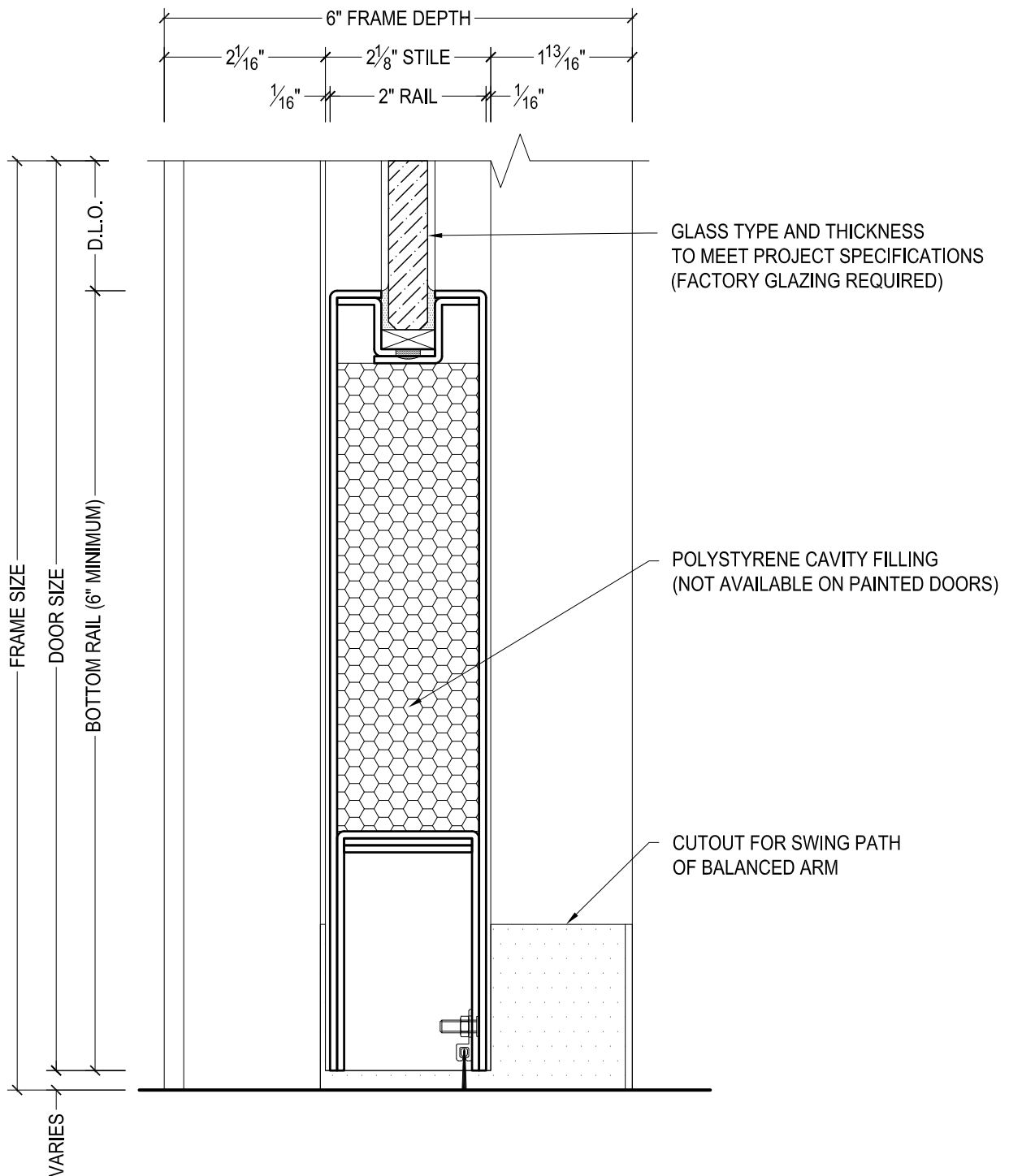
DRAWN BY:	AG	DRAWING DATE:	10/15/19
SERIES #:	006-BAL	DRAWING #:	EL-BAL-SLT
DESCRIPTION:	ELEVATION - PAINTED ULTRA-NARROW STILE SERIES BALANCED DOORS WITH FRAME SIDELITE AND TRANSOM		



DAWSON DOORS

825 ALLEN ST • JAMESTOWN, NY 14701 • (716) 664-3811 • WWW.DAWSONDOORS.COM

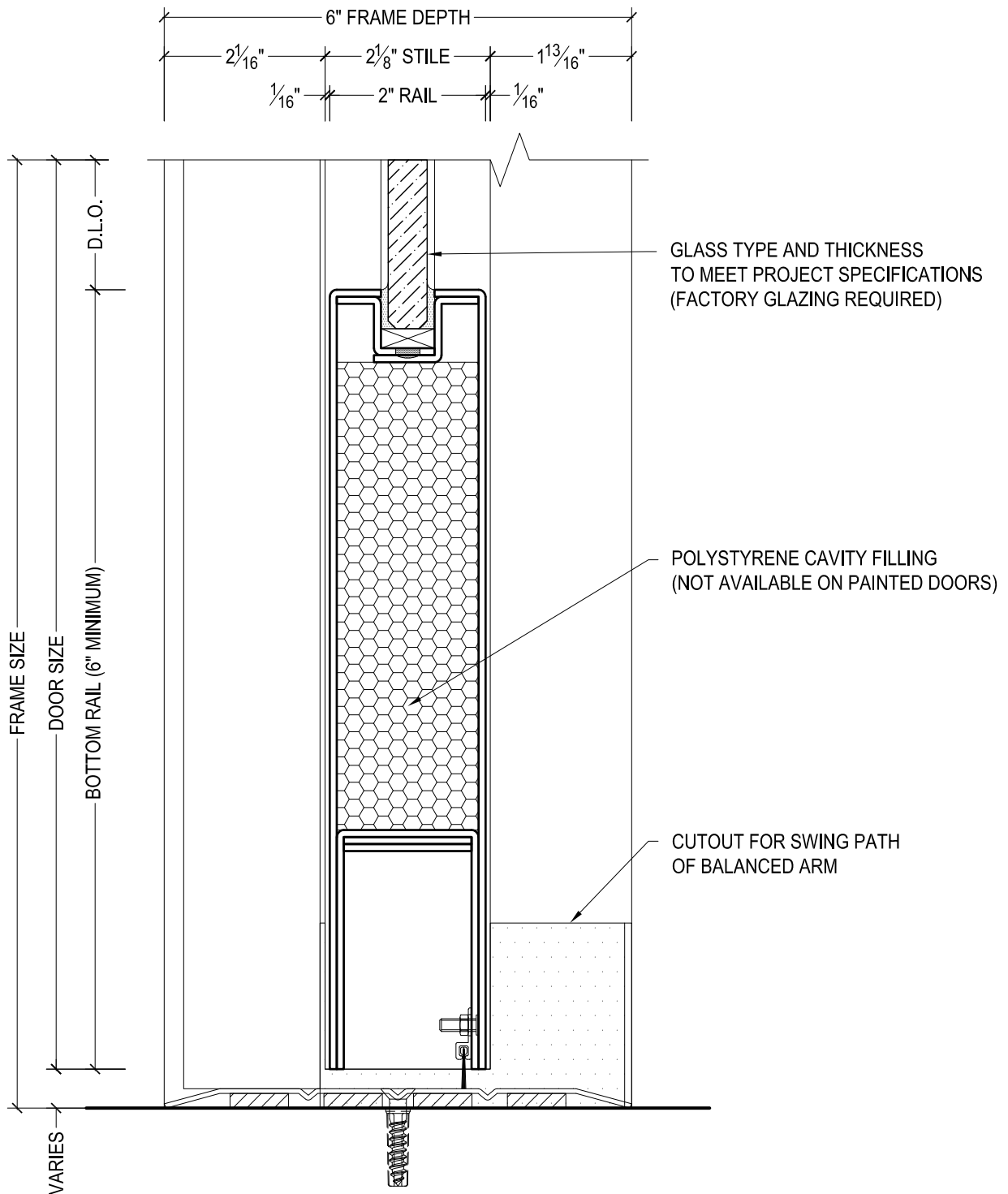
DRAWN BY:	AG	DRAWING DATE:	10/15/19
SERIES #:	006-BAL	DRAWING #:	6BFTRPG50
DESCRIPTION:	HEADER / TOP RAIL - ULTRA-NARROW STILE SERIES BALANCED DOORS		



DAWSON DOORS

825 ALLEN ST • JAMESTOWN, NY 14701 • (716) 664-3811 • WWW.DAWSONDOORS.COM

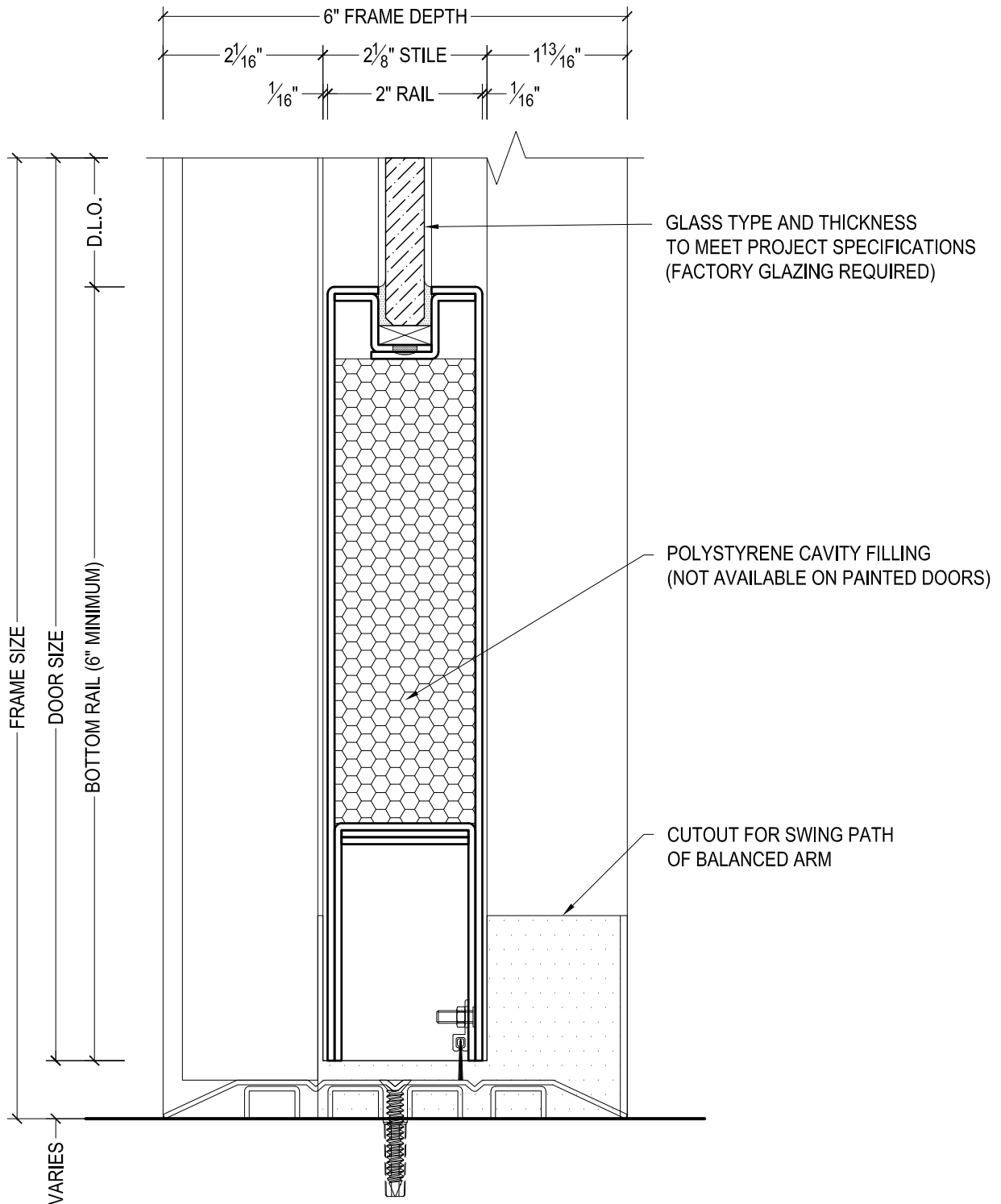
DRAWN BY:	AG	DRAWING DATE:	10/15/19
SERIES #:	006-BAL	DRAWING #:	6BFBNPG50
DESCRIPTION:	BOTTOM RAIL - ULTRA-NARROW STILE SERIES BALANCED DOORS - NO THRESHOLD -		



DAWSON DOORS

825 ALLEN ST • JAMESTOWN, NY 14701 • (716) 664-3811 • WWW.DAWSONDOORS.COM

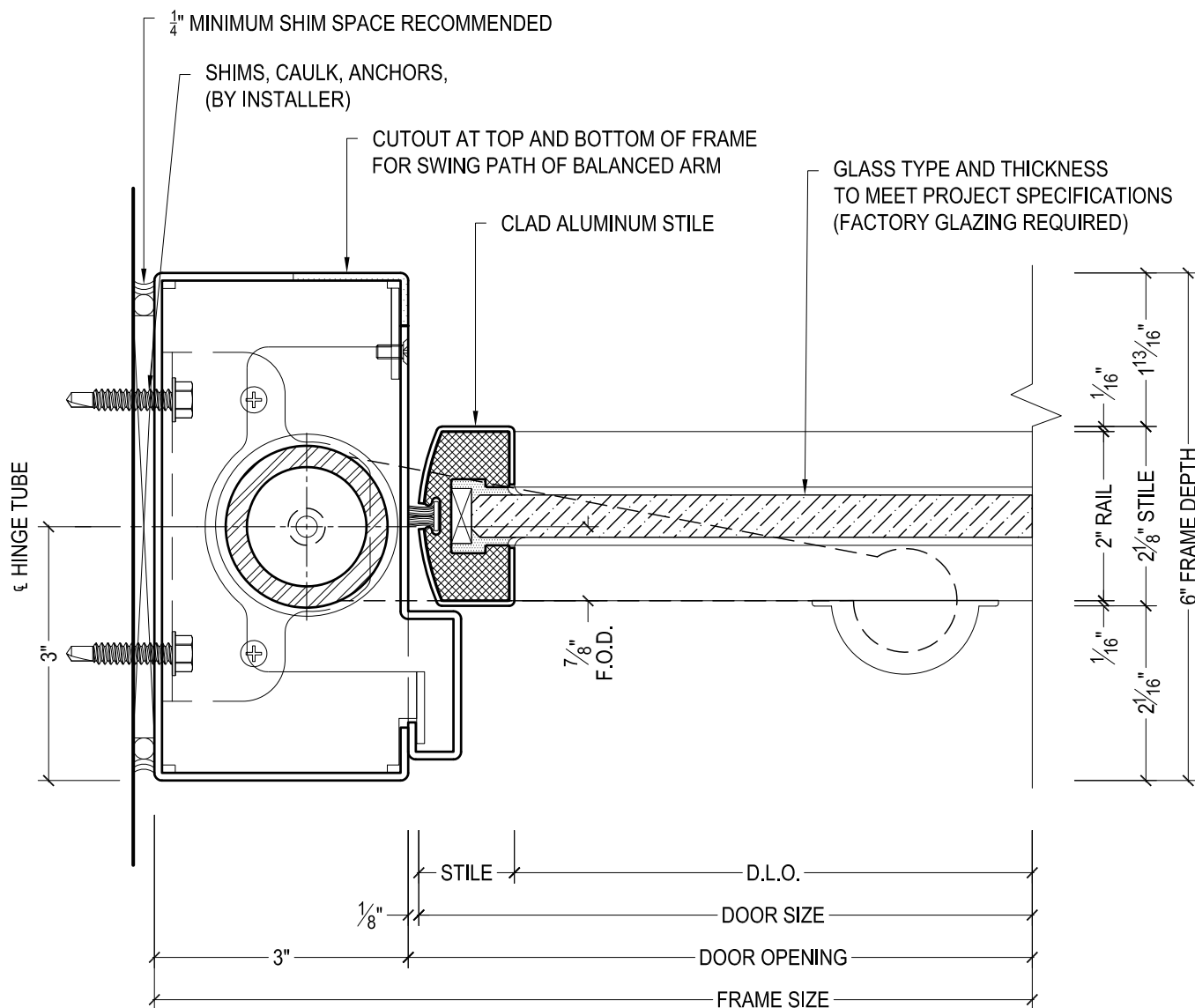
DRAWN BY:	AG	DRAWING DATE:	10/15/19
SERIES #:	006-BAL	DRAWING #:	6BFBQPG50
DESCRIPTION:	BOTTOM RAIL - ULTRA-NARROW STILE SERIES BALANCED DOORS - 1/4" THRESHOLD -		



DAWSON DOORS

825 ALLEN ST • JAMESTOWN, NY 14701 • (716) 664-3811 • WWW.DAWSONDOORS.COM

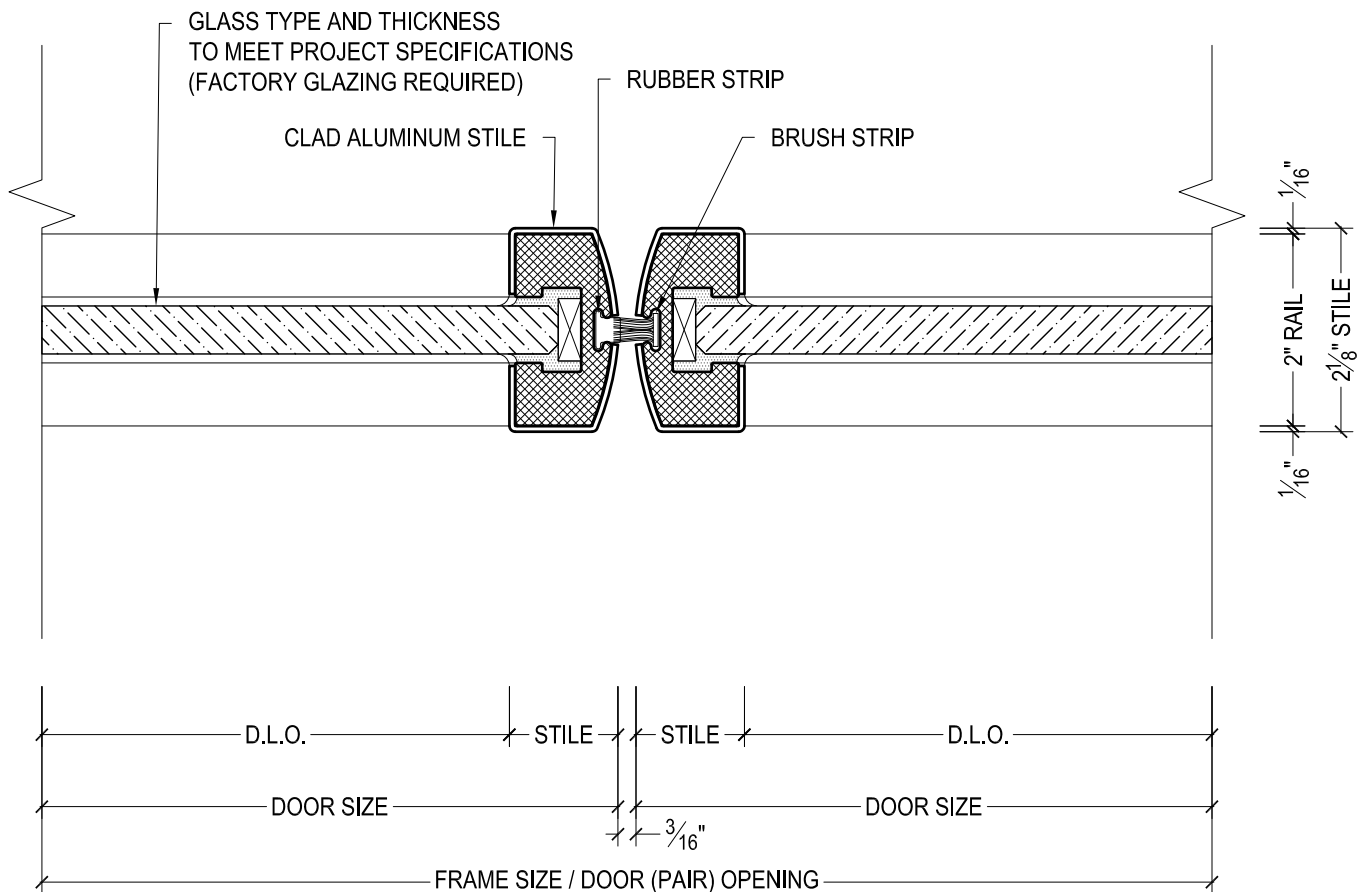
DRAWN BY:	AG	DRAWING DATE:	10/15/19
SERIES #:	006-BAL	DRAWING #:	6BFBHPG50
DESCRIPTION:	BOTTOM RAIL - ULTRA-NARROW STILE SERIES BALANCED DOORS - 1/2" THRESHOLD -		



DAWSON DOORS

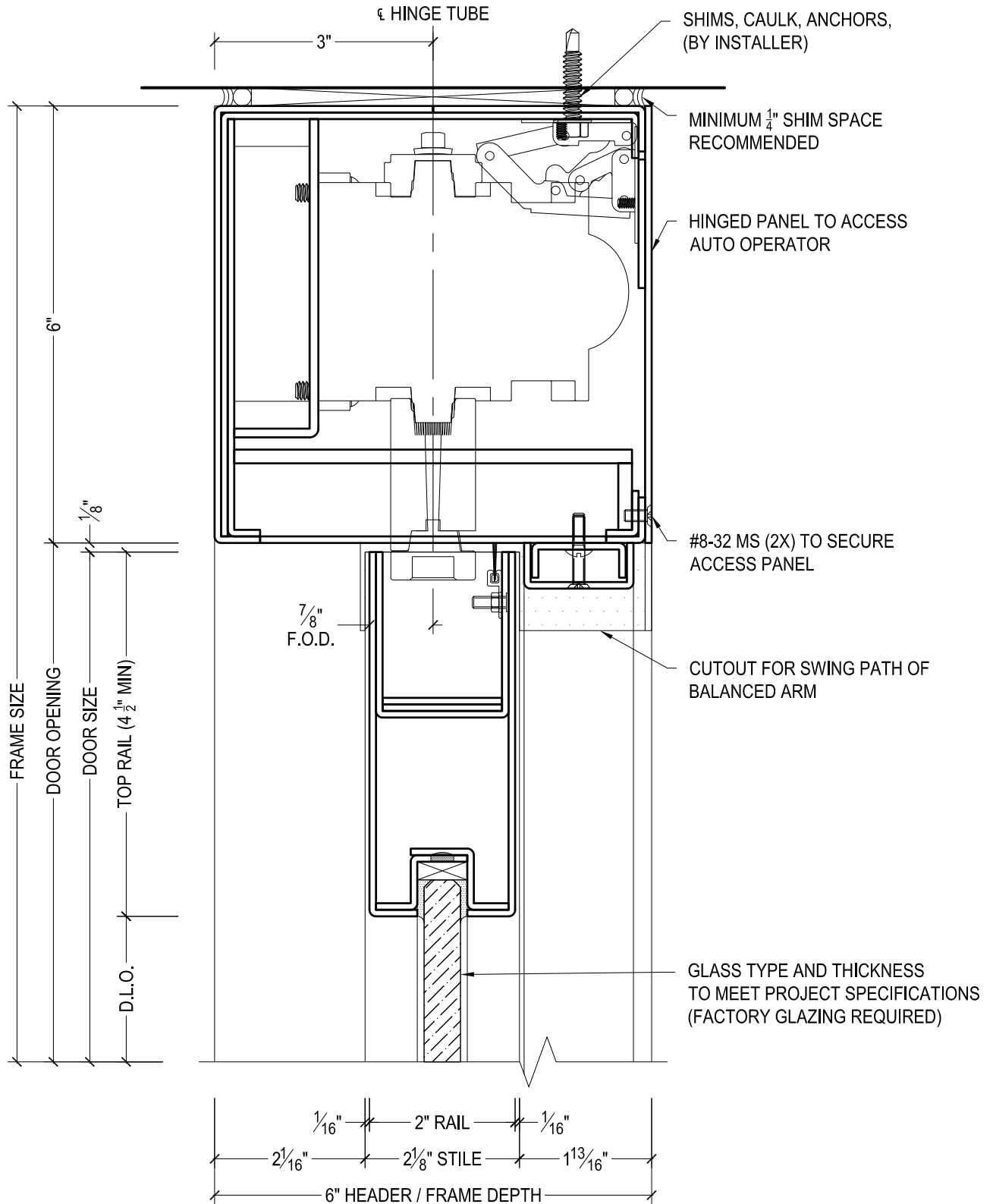
825 ALLEN ST • JAMESTOWN, NY 14701 • (716) 664-3811 • WWW.DAWSONDOORS.COM

DRAWN BY:	AG	DRAWING DATE:	10/15/19
SERIES #:	006-BAL	DRAWING #:	6BFPSUN50
DESCRIPTION:	PIVOT JAMB / STILE - ULTRA-NARROW STILE SERIES BALANCED DOORS		



825 ALLEN ST • JAMESTOWN, NY 14701 • (716) 664-3811 • WWW.DAWSONDOORS.COM

DRAWN BY:	AG	DRAWING DATE:	10/15/19
SERIES #:	006-BAL	DRAWING #:	6BFMSUN50
DESCRIPTION:	MEETING STILES - ULTRA-NARROW STILE SERIES BALANCED DOORS		



DAWSON DOORS

825 ALLEN ST • JAMESTOWN, NY 14701 • (716) 664-3811 • WWW.DAWSONDOORS.COM

DRAWN BY:

AG

DRAWING DATE:

10/15/19

SERIES #:

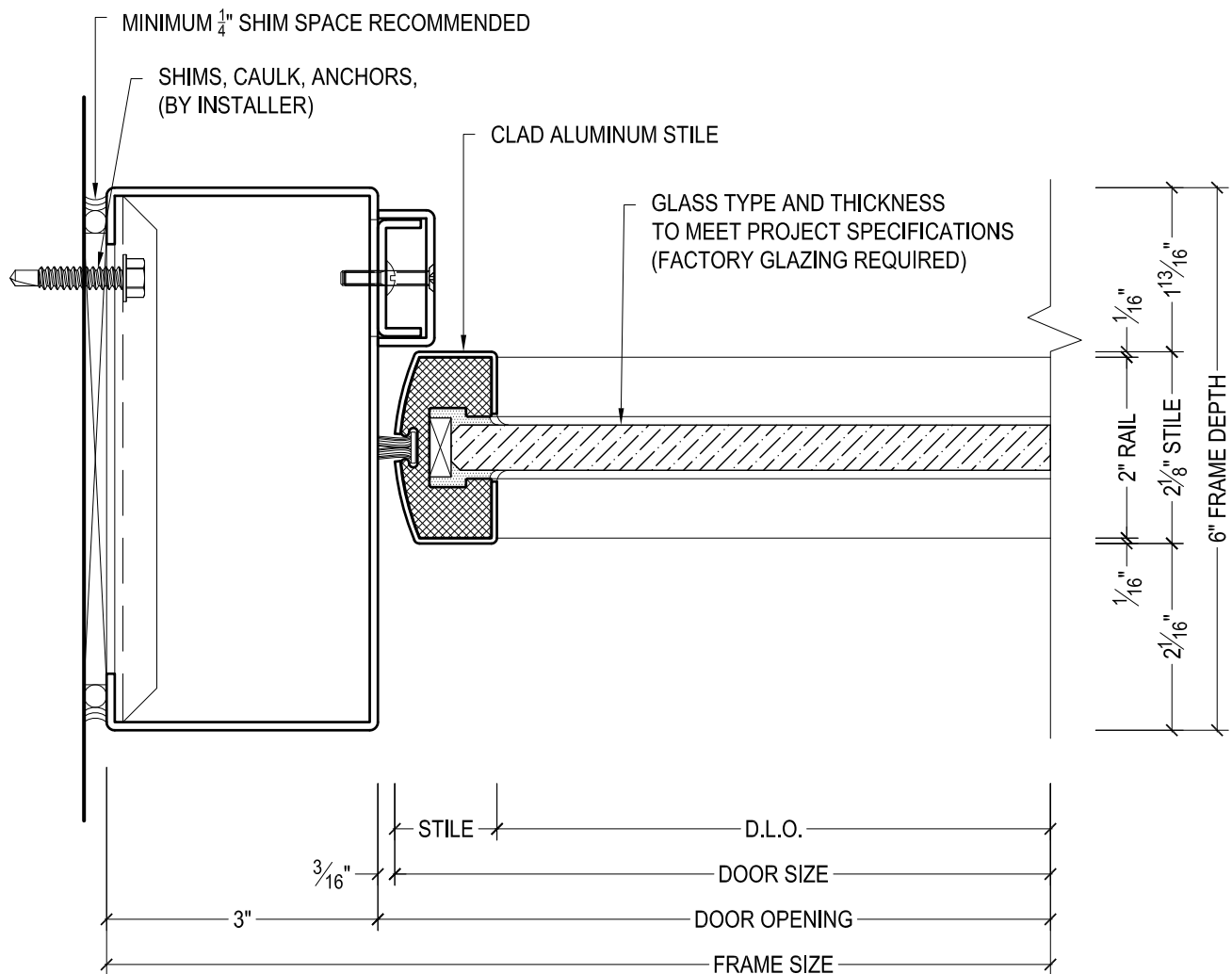
006-BAL

DRAWING #:

6BFTRPG50RA

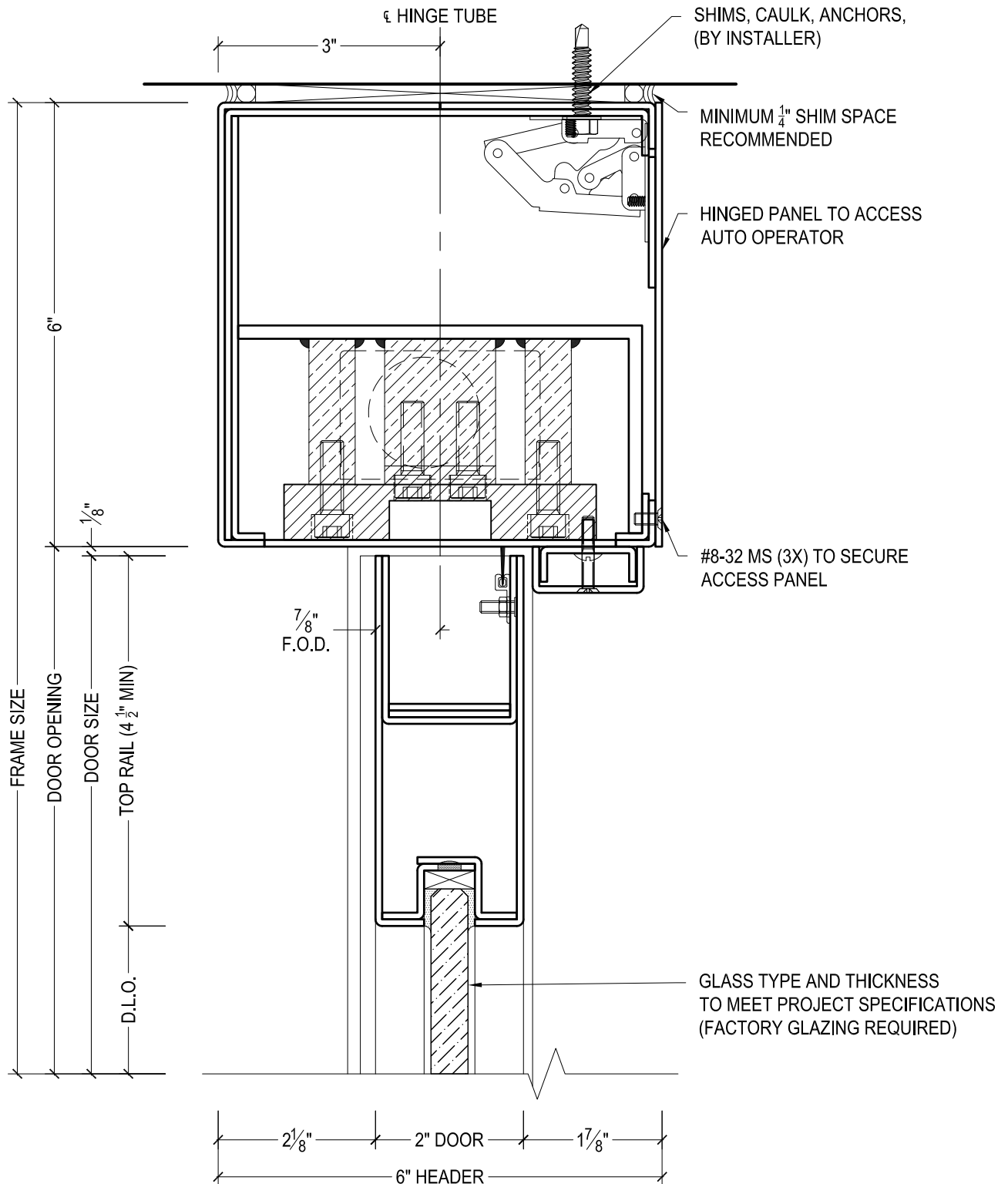
DESCRIPTION:

HEADER / TOP RAIL - ULTRA-NARROW STILE SERIES
BALANCED DOORS WITH RECORD AUTO OPERATOR



825 ALLEN ST • JAMESTOWN, NY 14701 • (716) 664-3811 • WWW.DAWSONDOORS.COM

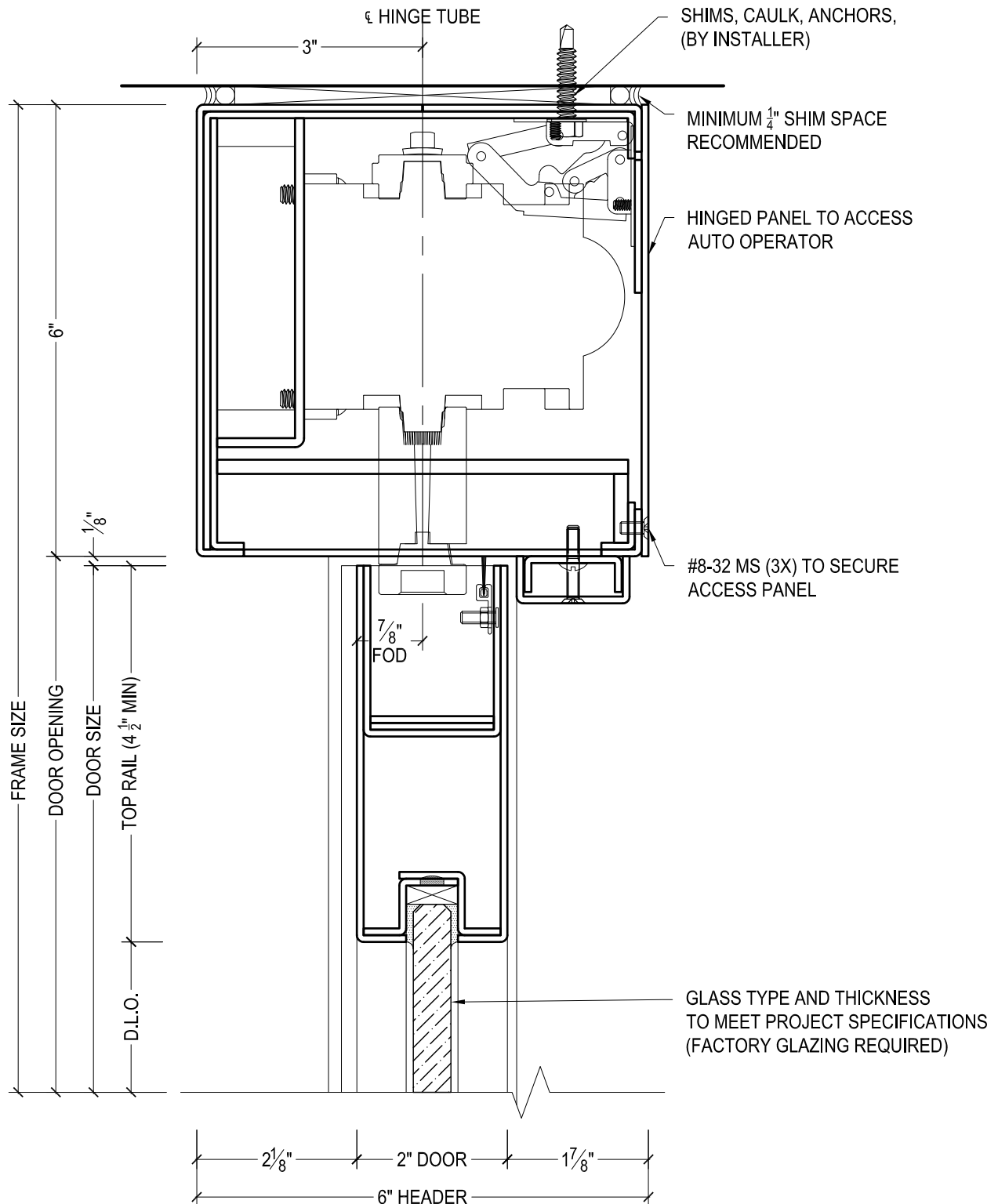
DRAWN BY:	AG	DRAWING DATE:	10/15/19
SERIES #:	006-BAL	DRAWING #:	6BFLSUN50
DESCRIPTION:	LOCK JAMB / STILE - ULTRA-NARROW STILE SERIES BALANCED DOORS		



DAWSON DOORS

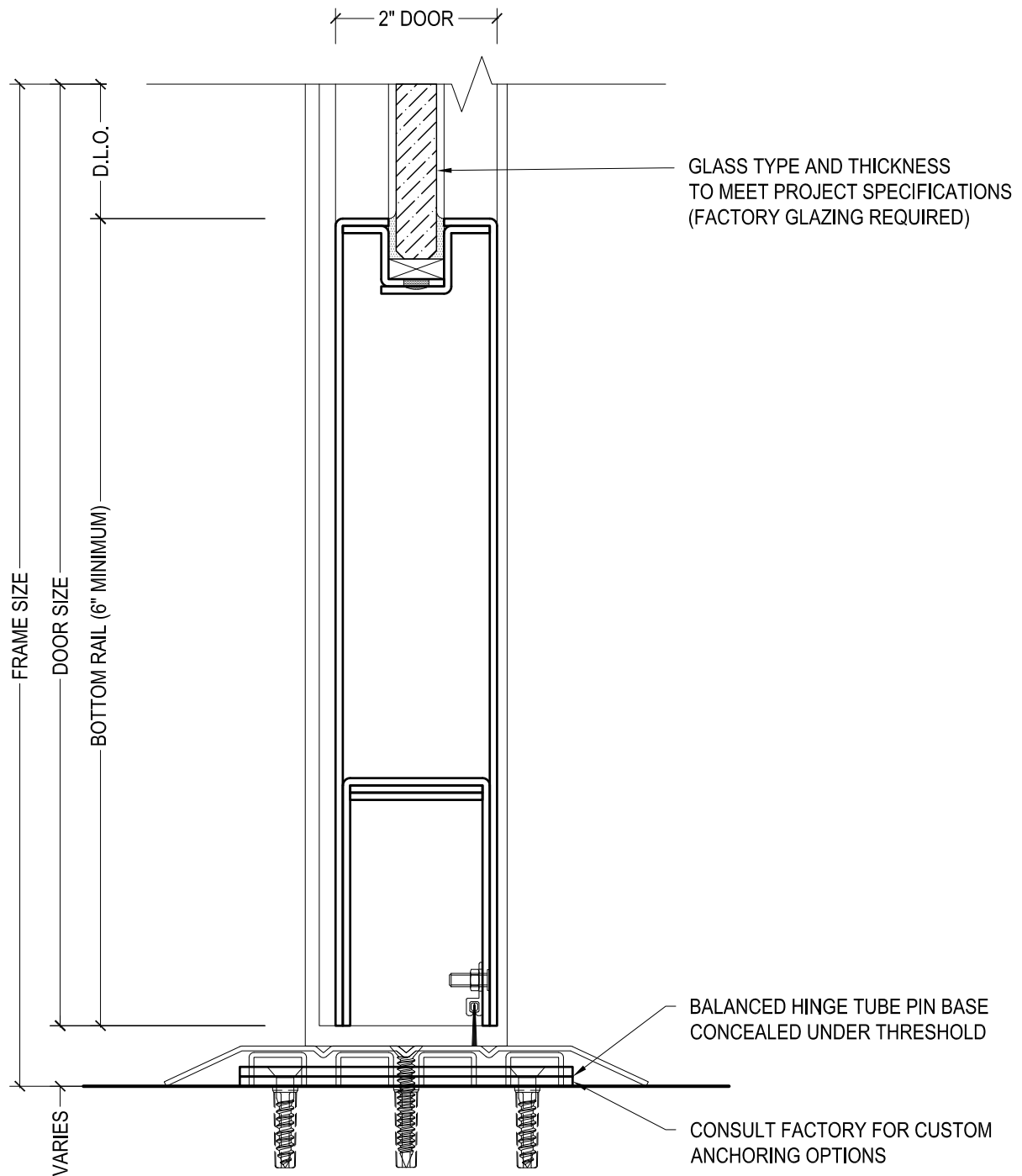
825 ALLEN ST • JAMESTOWN, NY 14701 • (716) 664-3811 • WWW.DAWSONDOORS.COM

DRAWN BY:	AG	DRAWING DATE:	10/15/19
SERIES #:	006-BAL	DRAWING #:	6BETRPG50RM
DESCRIPTION:	HEADER / TOP RAIL - ULTRA-NARROW STILE SERIES BALANCED DOORS ON MANUAL DOOR LEAF WITH 6" TALL HEADER FOR AUTO OPERATOR		



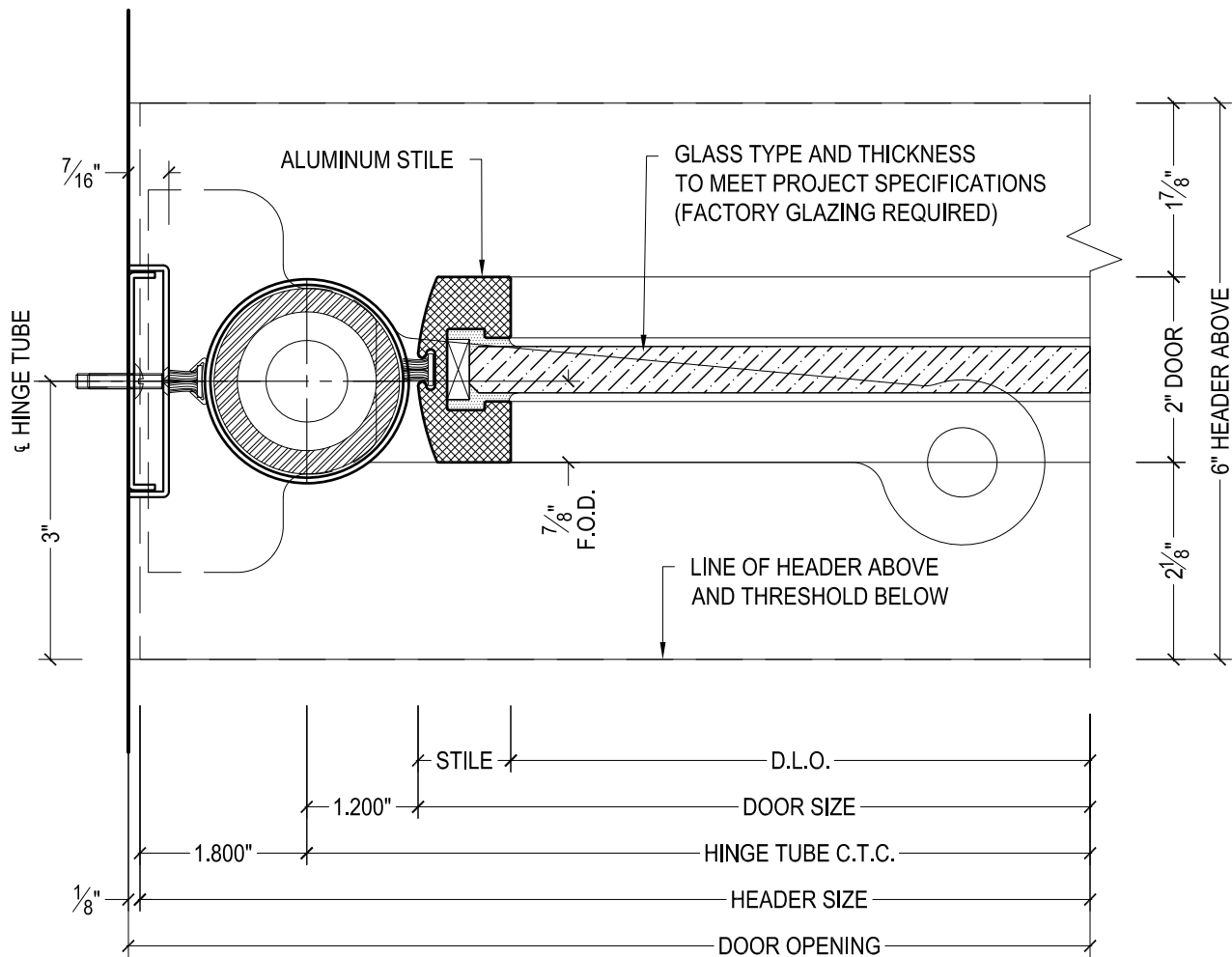
825 ALLEN ST • JAMESTOWN, NY 14701 • (716) 664-3811 • WWW.DAWSONDOORS.COM

DRAWN BY:	AG	DRAWING DATE:	10/15/19
SERIES #:	006-BAL	DRAWING #:	6BETRPG50RA
DESCRIPTION:	HEADER / TOP RAIL - ULTRA-NARROW STILE SERIES BALANCED DOORS ON AUTO OPERATED DOOR LEAF		



825 ALLEN ST • JAMESTOWN, NY 14701 • (716) 664-3811 • WWW.DAWSONDOORS.COM

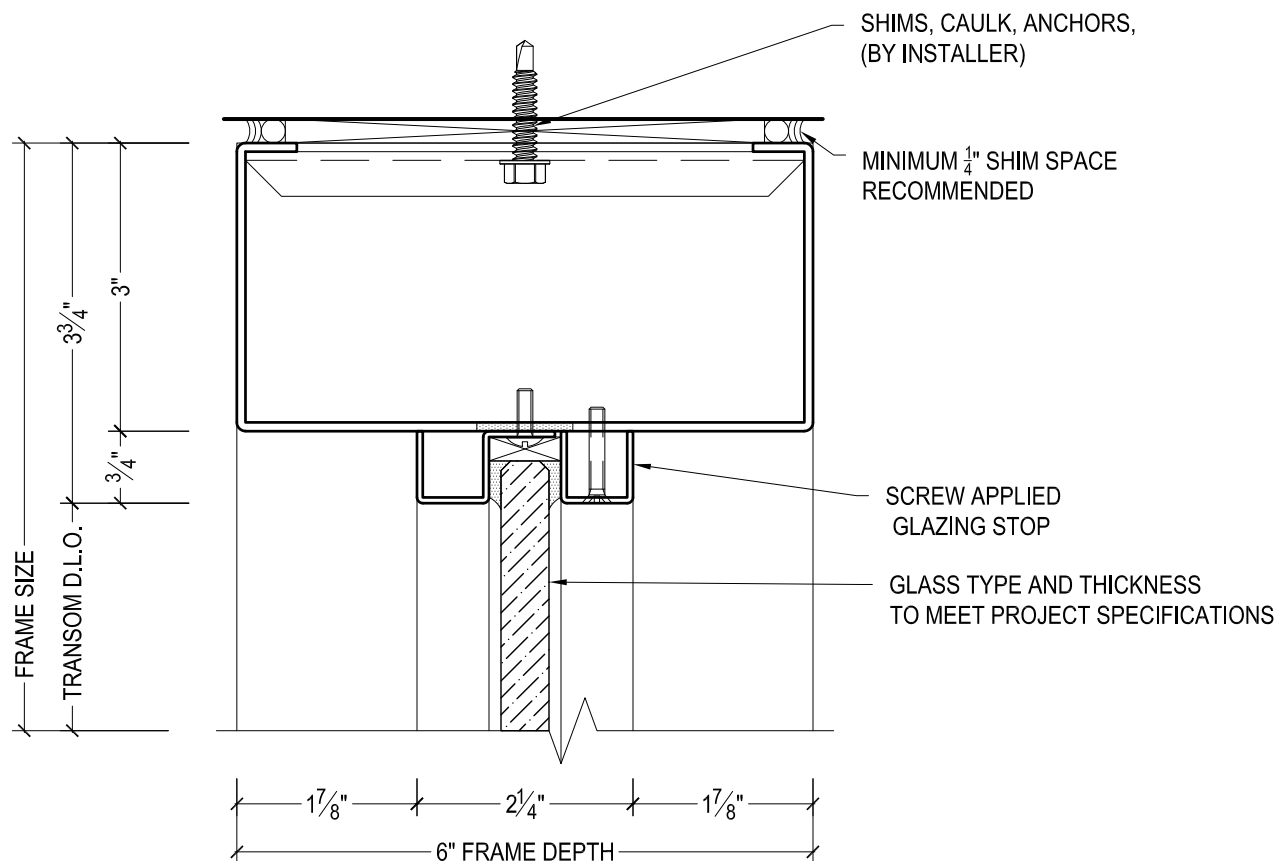
DRAWN BY:	AG	DRAWING DATE:	10/15/19
SERIES #:	006-BAL	DRAWING #:	6BEBHPG50
DESCRIPTION:	BOTTOM RAIL - ULTRA-NARROW STILE SERIES BALANCED DOORS, DAWSON 300 SERIES THRESHOLD SHOWN TO CONCEAL HINGE TUBE BASE		



DAWSON DOORS

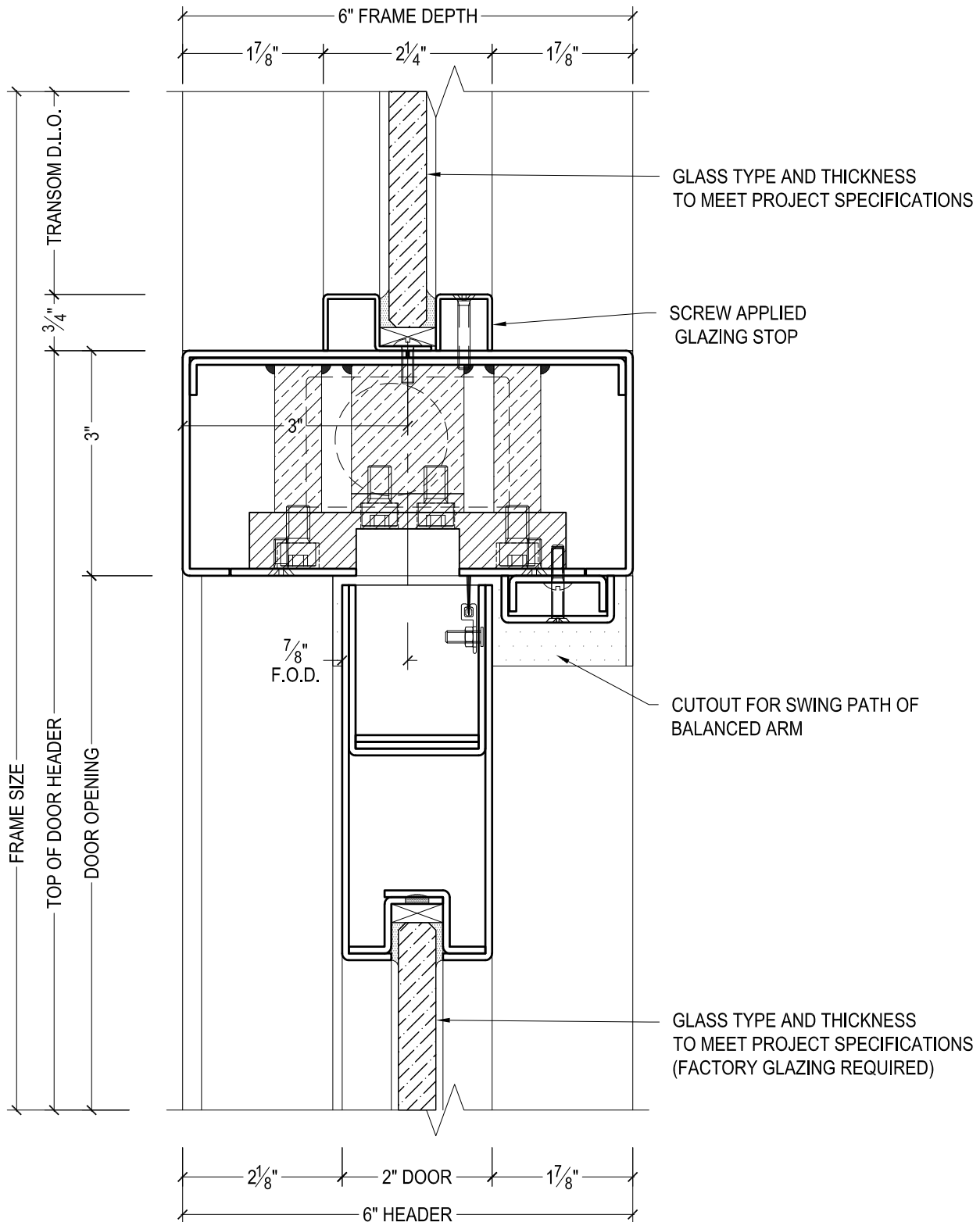
825 ALLEN ST • JAMESTOWN, NY 14701 • (716) 664-3811 • WWW.DAWSONDOORS.COM

DRAWN BY:	AG	DRAWING DATE:	10/15/19
SERIES #:	006-BAL	DRAWING #:	6BEPSUN50
DESCRIPTION:	PIVOT STILE - ULTRA-NARROW STILE SERIES BALANCED DOORS WITH EXPOSED HINGE TUBE		



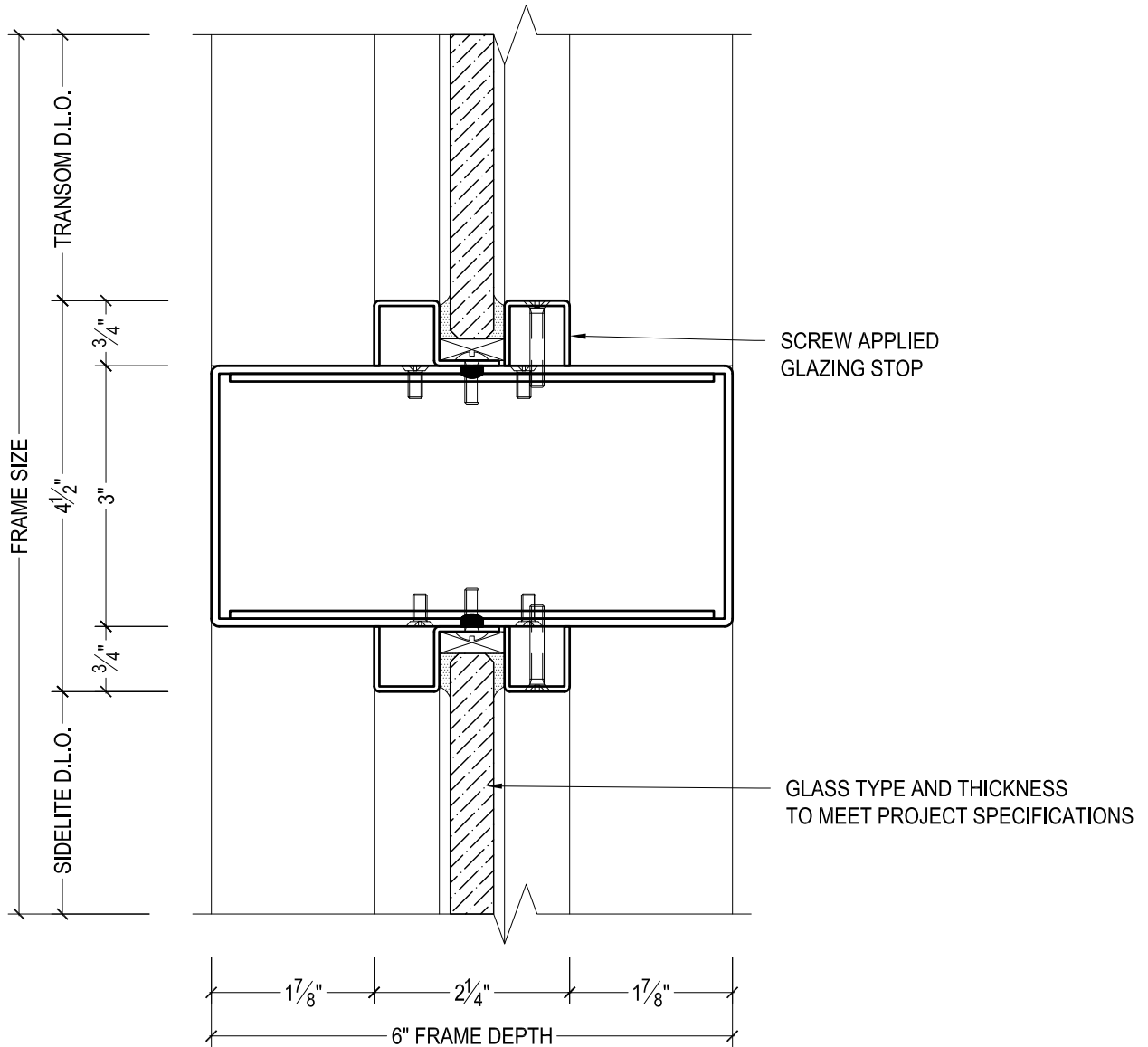
825 ALLEN ST • JAMESTOWN, NY 14701 • (716) 664-3811 • WWW.DAWSONDOORS.COM

DRAWN BY:	AG	DRAWING DATE:	10/15/19
SERIES #:	006-BAL	DRAWING #:	FXXSHAS50
DESCRIPTION:	PIVOT STILE / JAMB / SIDELITE MULLION - ULTRA-NARROW STILE SERIES BALANCED DOORS WITH UNS GLAZING. JAMB TREATED AS SIDELITE MULLION.		



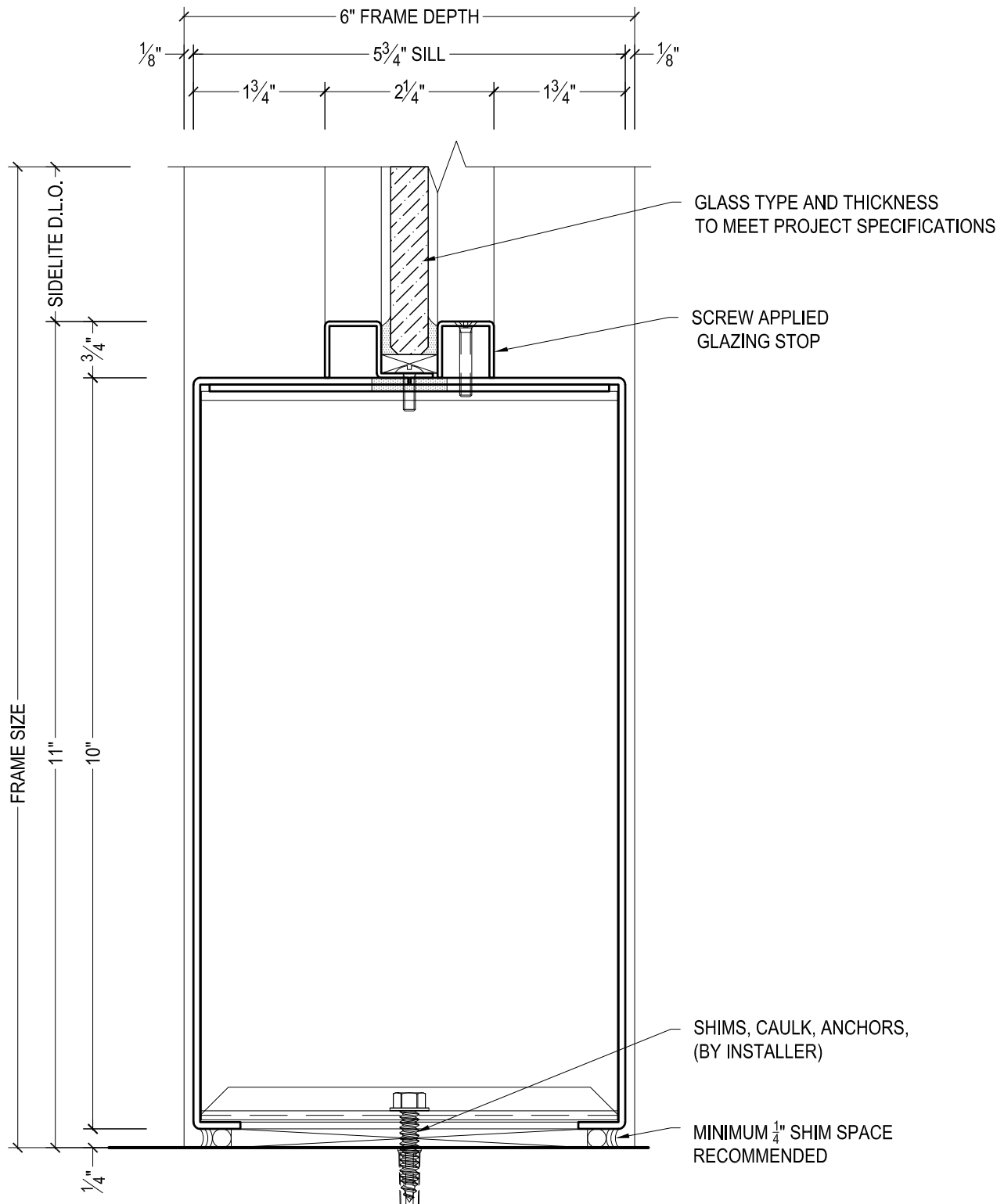
825 ALLEN ST • JAMESTOWN, NY 14701 • (716) 664-3811 • WWW.DAWSONDOORS.COM

DRAWN BY:	AG	DRAWING DATE:	10/15/19
SERIES #:	006-BAL	DRAWING #:	6BFTHPG50
DESCRIPTION:	HEADER / TOP RAIL - ULTRA-NARROW STILE SERIES BALANCED DOORS WITH TRANSOM ABOVE WITH APPLIED STOPS		



825 ALLEN ST • JAMESTOWN, NY 14701 • (716) 664-3811 • WWW.DAWSONDOORS.COM

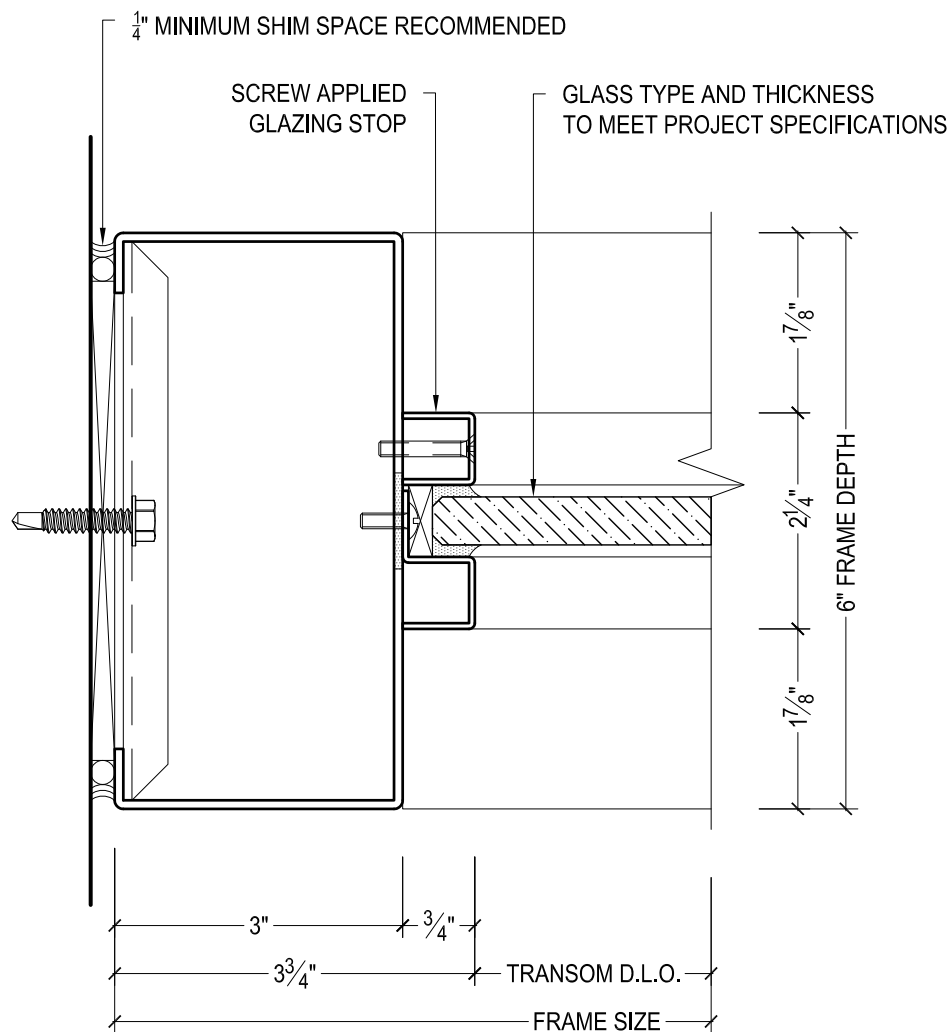
DRAWN BY:	AG	DRAWING DATE:	10/15/19
SERIES #:	006-BAL	DRAWING #:	FXXSCAS50
DESCRIPTION:	PIVOT STILE / JAMB / SIDELITE MULLION - ULTRA-NARROW STILE SERIES BALANCED DOORS WITH UNS GLAZING. JAMB TREATED AS SIDELITE MULLION.		



DAWSON DOORS

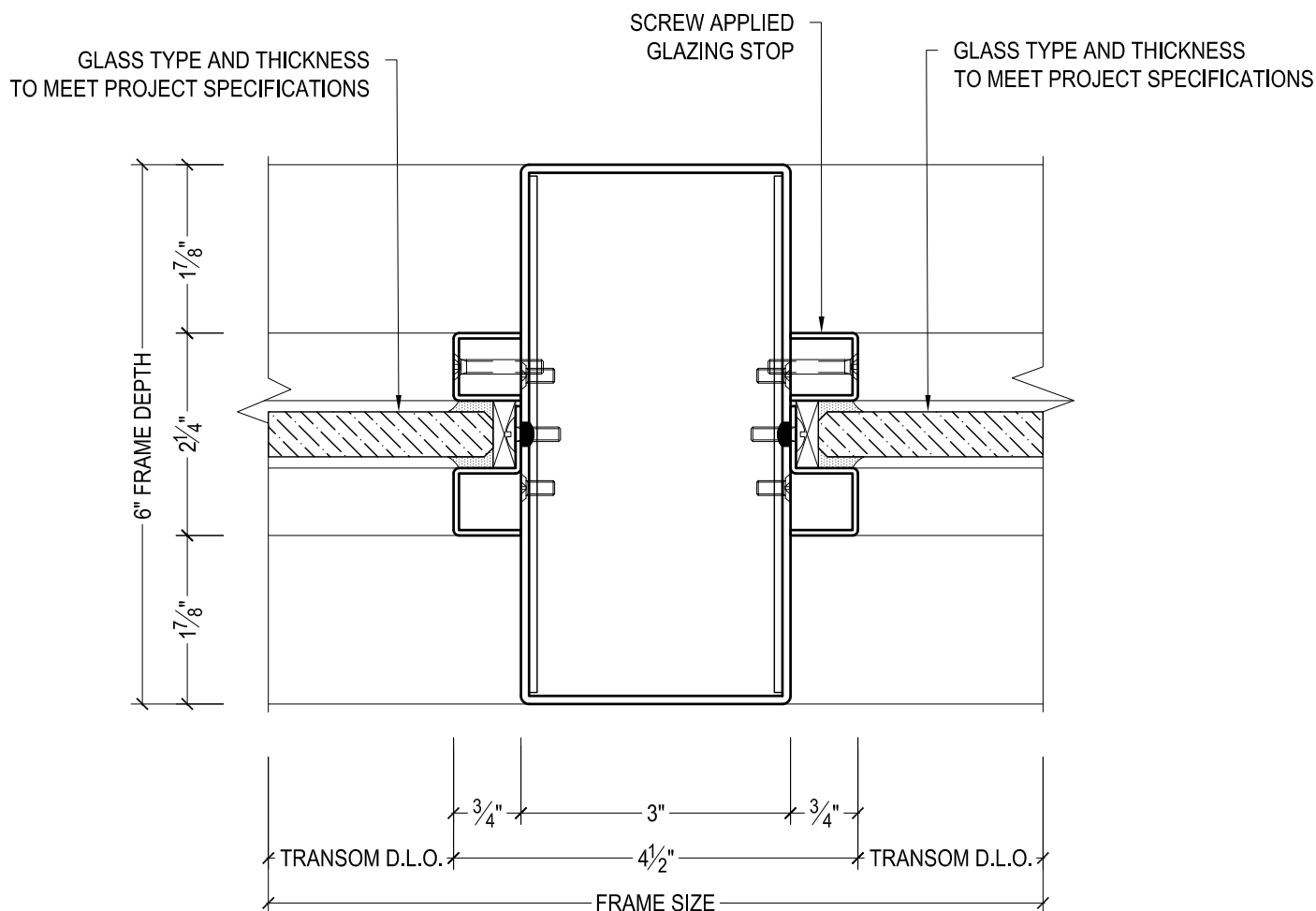
825 ALLEN ST • JAMESTOWN, NY 14701 • (716) 664-3811 • WWW.DAWSONDOORS.COM

DRAWN BY:	AG	DRAWING DATE:	10/15/19
SERIES #:	006-BAL	DRAWING #:	FXXSSAS50
DESCRIPTION:	PIVOT STILE / JAMB / SIDELITE MULLION - ULTRA-NARROW STILE SERIES BALANCED DOORS WITH UNS GLAZING. JAMB TREATED AS SIDELITE MULLION.		



825 ALLEN ST • JAMESTOWN, NY 14701 • (716) 664-3811 • WWW.DAWSONDOORS.COM

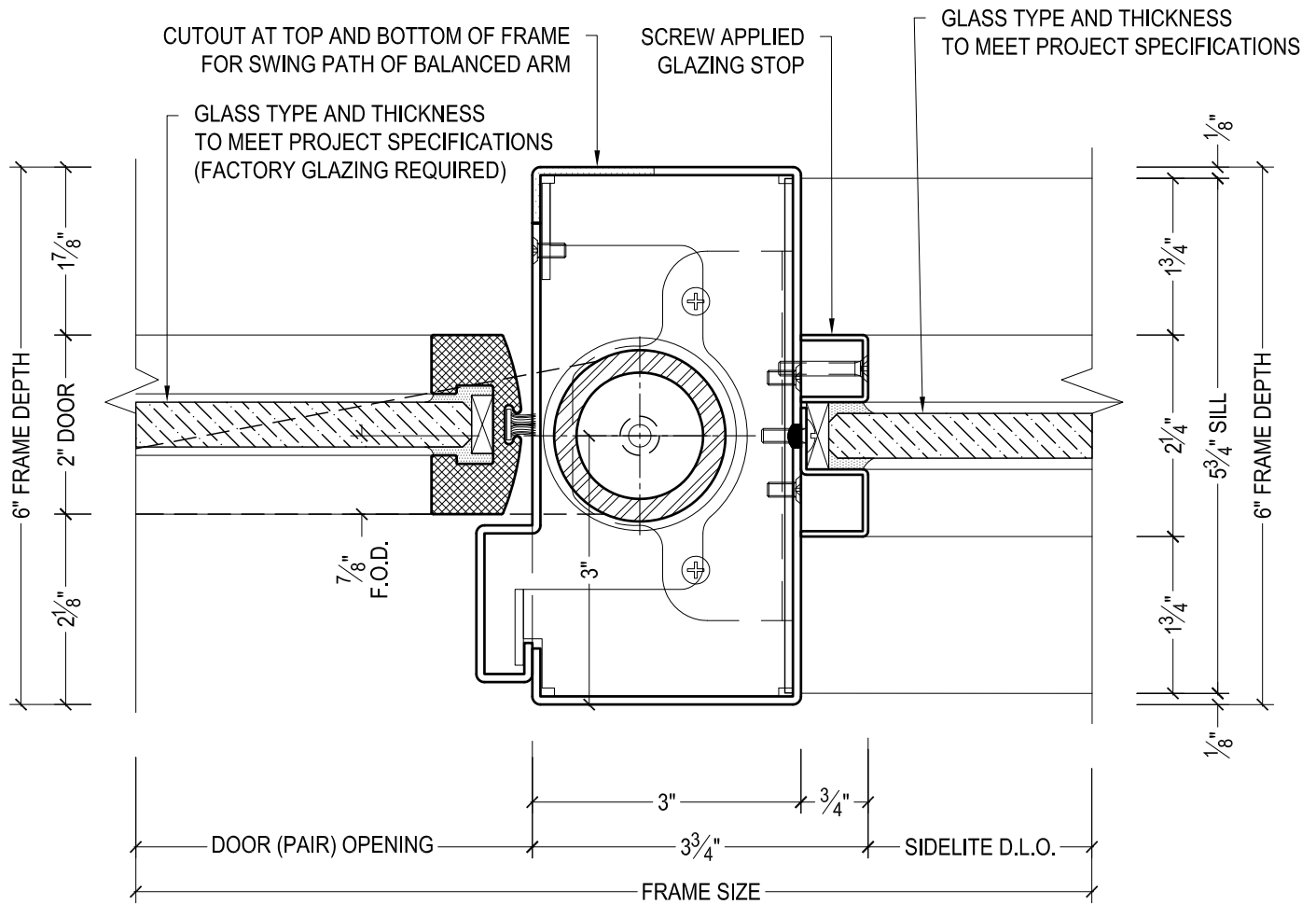
DRAWN BY:	AG	DRAWING DATE:	10/15/19
SERIES #:	006-BAL	DRAWING #:	FXXTWAS50
DESCRIPTION:	PIVOT STILE / JAMB / SIDELITE MULLION - ULTRA-NARROW STILE SERIES BALANCED DOORS WITH UNS GLAZING. JAMB TREATED AS SIDELITE MULLION.		



DAWSON DOORS

825 ALLEN ST • JAMESTOWN, NY 14701 • (716) 664-3811 • WWW.DAWSONDOORS.COM

DRAWN BY:	AG	DRAWING DATE:	10/15/19
SERIES #:	006-BAL	DRAWING #:	FXXTVAS50
DESCRIPTION:	PIVOT STILE / JAMB / SIDELITE MULLION - ULTRA-NARROW STILE SERIES BALANCED DOORS WITH UNS GLAZING. JAMB TREATED AS SIDELITE MULLION.		



DRAWN BY:	AG	DRAWING DATE:	10/15/19
SERIES #:	006-BAL	DRAWING #:	6BFSMAS50
DESCRIPTION:	PIVOT STILE / JAMB / SIDELITE MULLION - ULTRA-NARROW STILE SERIES BALANCED DOORS WITH UNS GLAZING. JAMB TREATED AS SIDELITE MULLION.		