

1. MATERIALS & FINISHES

- A. STAINLESS STEEL, BRASS, AND BRONZE ARE AVAILABLE IN #8 MIRROR, #6 SATIN, #4 SATIN, OR NON-DIRECTIONAL (ANGEL HAIR) FINISH. DAWSON DOES NOT PROVIDE LACQUERED FINISH ON BRASS OR BRONZE PRODUCTS. WET PAINTED OR POWDER COATED DOORS WILL BE FABRICATED FROM GALVANNEALED STEEL. CONSULT FACTORY FOR CUSTOM FINISHES.
- B. ULTRA-NARROW STILES (UNS) ARE FABRICATED FROM 6063 ALUMINUM EXTRUSIONS, MACHINED AS REQUIRED FOR HARDWARE AND ASSEMBLY REQUIREMENTS.
- C. STAINLESS STEEL UNS SERIES DOOR RAILS ARE FABRICATED WITH 13 GA FINISH MATERIALS AND 13 GA INTERNAL COMPONENTS. STILES ARE CLAD WITH 16 GA MATERIALS.
- D. PAINTED UNS SERIES DOOR RAILS ARE FABRICATED WITH 13 GA GALVANNEALED STEEL FINISH MATERIALS AND 13 GA GALVANNEALED STEEL INTERNAL COMPONENTS. STILES ARE NOT CLAD, BUT PAINTED TO MATCH RAILS.
- E. BRASS AND BRONZE UNS SERIES DOOR RAILS ARE FABRICATED WITH .090" FINISH MATERIALS & .090" INTERNAL COMPONENTS. STILES ARE CLAD WITH 16 GA MATERIALS
- F. STAINLESS STEEL AND PAINTED GALVANNEALED STEEL FRAMES AND DOOR STOP TO BE FABRICATED FROM 13 GA MATERIAL. TRANSOM AND SIDELITE GLASS STOPS TO BE FABRICATED FROM .060" MATERIAL.
- G. BRASS AND BRONZE FRAMES AND DOOR STOPS TO BE FABRICATED FROM .090" MATERIAL. TRANSOM & GLASS STOPS TO BE FABRICATED FROM .060" MATERIAL.

2. STANDARD DIMENSIONS

- A. DOORS HAVE A MINIMUM TOP RAIL OF 4". STILE AND RAIL DOORS HAVE A MINIMUM STILE WIDTH OF $2\frac{3}{4}$ ". ALL DOORS HAVE A STANDARD BOTTOM RAIL DIMENSION OF 10" TO MEET ADA CODE. MINIMUM BOTTOM RAIL OF 6" WILL NOT MEET ADA. MINIMUM DIMENSIONS SUBJECT TO CHANGE BASED ON HARDWARE - CONSULT FACTORY.
- B. FRAME PROFILES HAVE A MINIMUM SIZE OF 1" FACE x $4\frac{3}{4}$ " DEPTH. MINIMUM DIMENSIONS SUBJECT TO CHANGE BASED ON HARDWARE AND ASPECT RATIO OF FRAME. CONSULT FACTORY FOR CUSTOM SIZES.
- C. SEE GLAZING DETAILS FOR STANDARD GLASS POCKET AND STANDARD GLASS BITE. CONSULT FACTORY FOR CUSTOM GLASS POCKET OR CUSTOM GLASS BITE.
- E. HORIZONTAL DOOR STOPS TO STOP SHORT ON PIVOT SIDE FOR SWING CLEARANCE. DOOR STOPS FABRICATED $\frac{5}{8}$ " HIGH STANDARD, VARYING WITH HARDWARE REQUIREMENTS. WIDTH VARIES AS REQUIRED. CONSULT FACTORY FOR CUSTOM SIZES AND PROFILES.
- F. MINIMUM CENTER PIVOT DOOR WIDTH TO MEET ADA MINIMUM OF 32" CLEAR OPENING IS $36\frac{1}{16}$ ". MINIMUM SIZE OF DOOR SUBJECT TO CHANGE BASED ON HARDWARE REQUIREMENTS.

3. HARDWARE

- A. AUTOMATIC DOOR BOTTOMS ARE NOT COMPATIBLE WITH CENTER PIVOTED HARDWARE. DAWSON WILL NOT PROVIDE AUTOMATIC DOOR BOTTOMS ON DOORS THAT USE CENTER PIVOTS.
- B. AUTOMATIC OPERATORS WITH END LOAD REQUIREMENTS WILL REQUIRE THE RIXSON H117-3/4 BOTTOM PIVOT. THE BOTTOM PIVOTS TYPICALLY SUPPLIED WITH OVERHEAD AUTOMATIC OPERATORS ARE NOT HEAVY DUTY ENOUGH FOR DAWSON DOORS.
- C. STANDARD PIVOT CENTERLINE IS $2\frac{3}{4}$ " FROM THE DOOR OPENING, CENTERED IN THE DOOR. CONSULT FACTORY FOR CUSTOM PIVOT CENTERLINE.
- D. MOST CLOSER MANUFACTURERS RECOMMEND AN AUXILIARY STOP TO PREVENT DAMAGE TO THE CLOSER. PLEASE SPECIFY A MANUFACTURER AND MODEL OF A SURFACE MOUNTED, CONCEALED (WHERE APPLICABLE), OR FLOOR / WALL STOP.

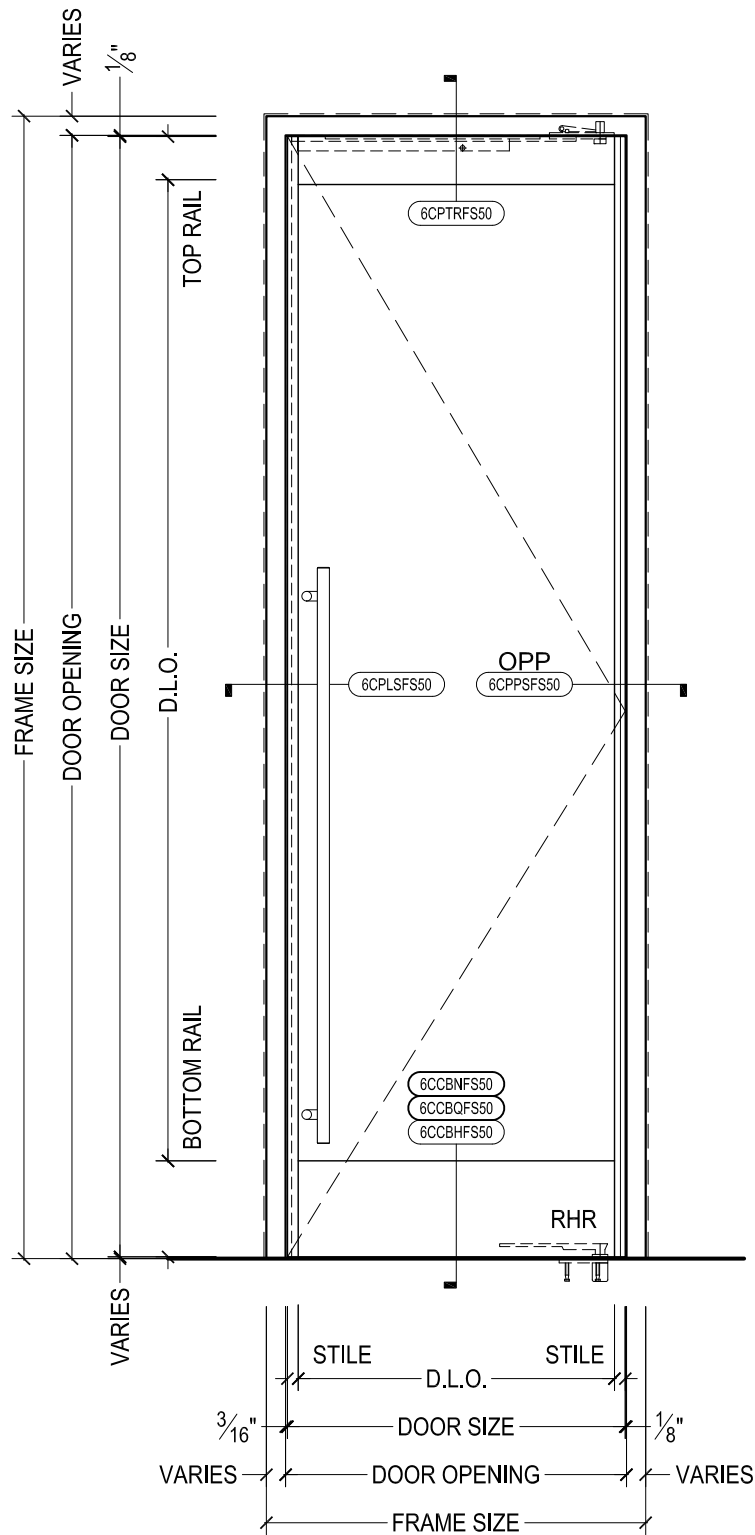


825 ALLEN ST • JAMESTOWN, NY 14701 • (716) 664-3811 • WWW.DAWSONDOORS.COM

DRAWN BY:	JBL	DRAWING DATE:	12/6/19
SERIES #:	006-CP	DRAWING #:	NOTES 1
DESCRIPTION:	GENERAL NOTES FOR 006 UNS SERIES DOORS WITH CENTER PIVOTED HARDWARE		



ELEVATION - STILE AND RAIL UNS SERIES CENTER
PIVOTED DOORS WITH FLOOR CLOSERS



DAWSON DOORS

825 ALLEN ST • JAMESTOWN, NY 14701 • (716) 664-3811 • WWW.DAWSONDOORS.COM

DRAWN BY:

JBL

DRAWING DATE:

12/6/19

SERIES #:

006-CP

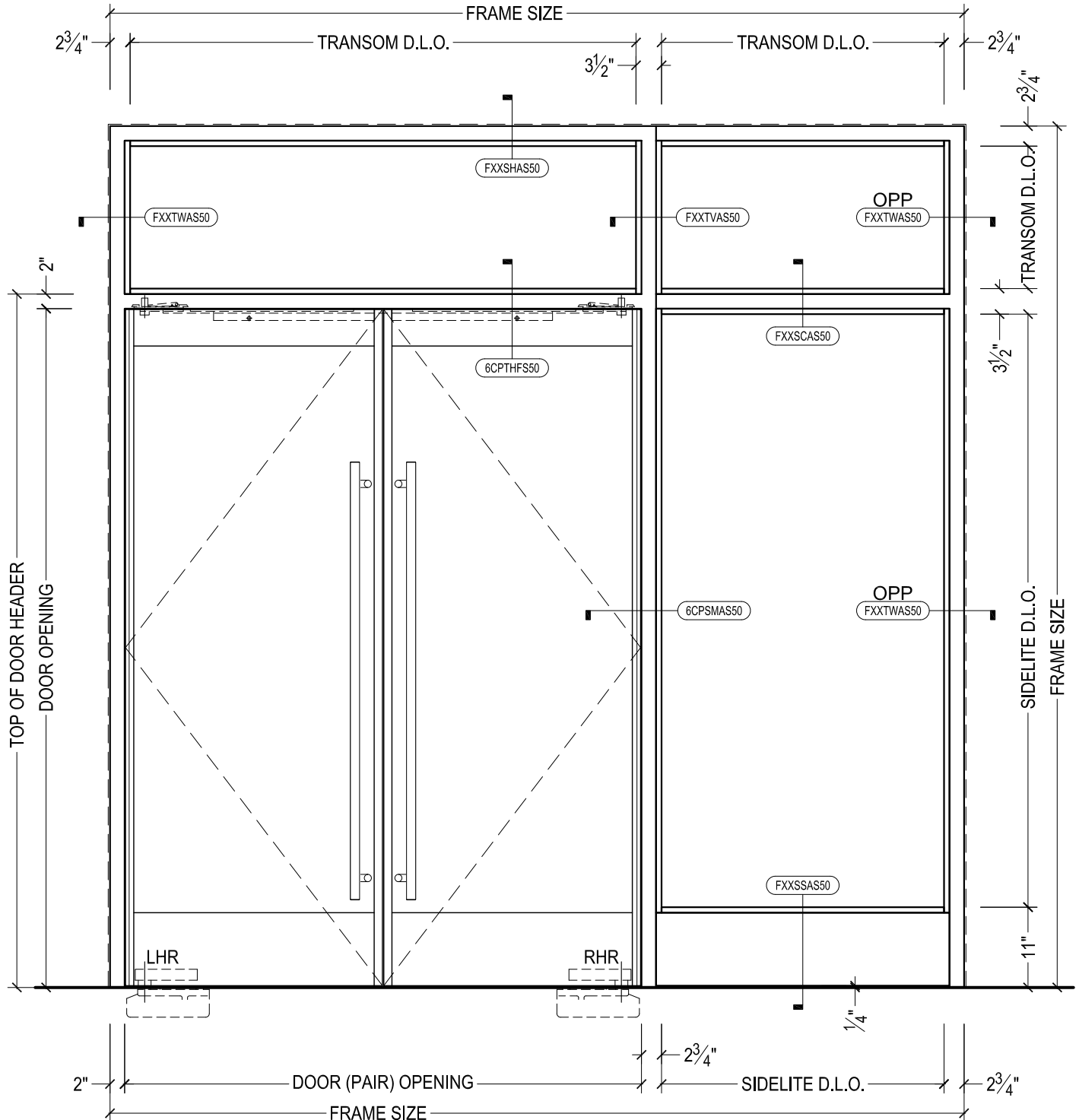
DRAWING #:

EL-SAO-SIN

DESCRIPTION:

ELEVATION - STILE AND RAIL UNS SERIES CENTER
PIVOTED DOORS WITH SURFACE MOUNTED AUTOMATIC
OPERATOR

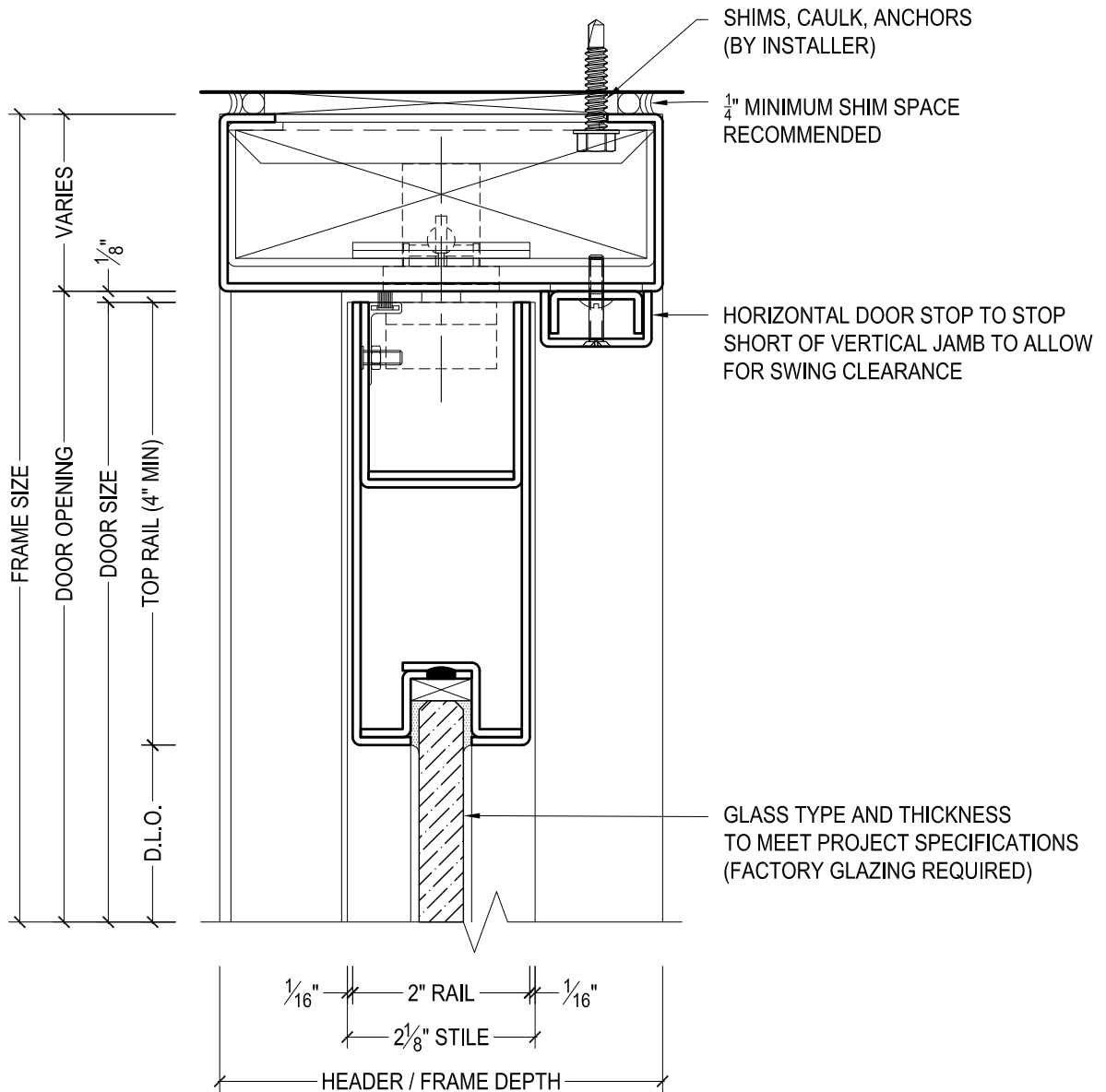
**NOTE: HORIZONTAL OR VERTICAL FIELD SPLICES
MAY BE REQUIRED TO FACILITATE SHIPPING SIZE
LIMITATIONS. CONSULT FACTORY FOR OPTIONS**



DAWSON DOORS

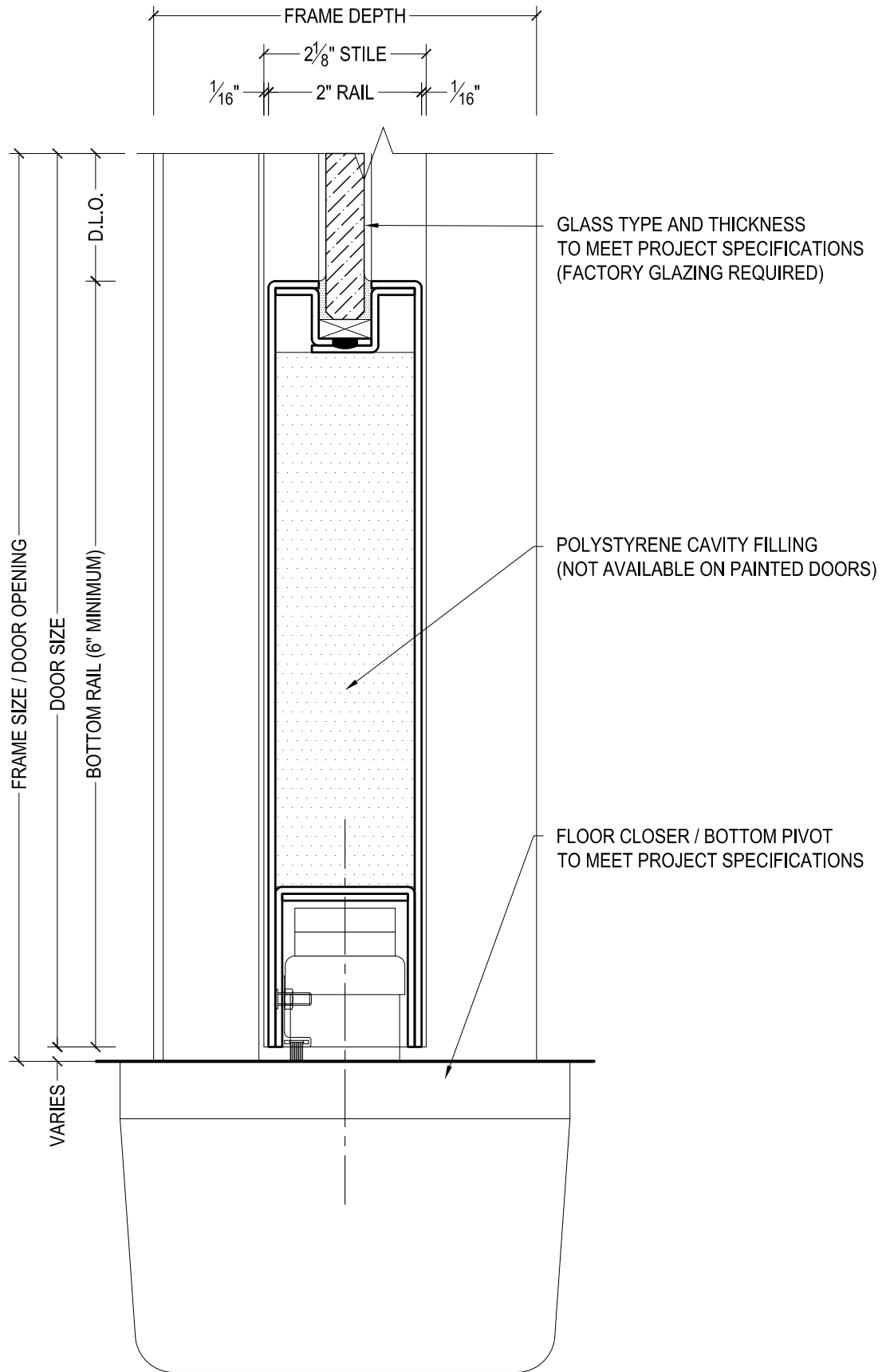
825 ALLEN ST • JAMESTOWN, NY 14701 • (716) 664-3811 • WWW.DAWSONDOORS.COM

DRAWN BY:	JBL	DRAWING DATE:	12/6/19
SERIES #:	006-CP	DRAWING #:	EL-CP-SLT
DESCRIPTION:	ELEVATION - STILE AND RAIL UNS SERIES CENTER PIVOTED DOORS WITH FRAME SIDELITE AND TRANSOM		

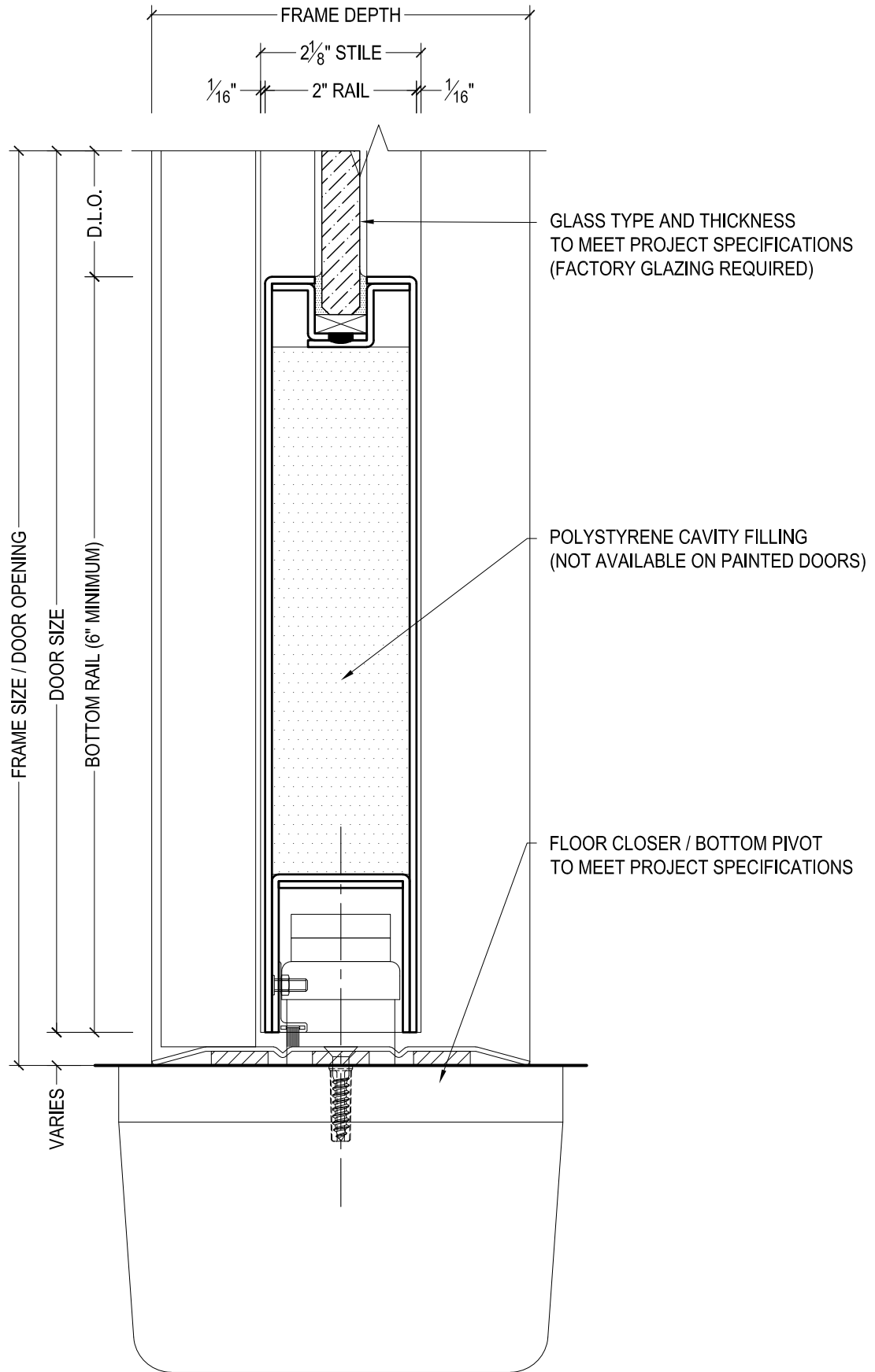


825 ALLEN ST • JAMESTOWN, NY 14701 • (716) 664-3811 • WWW.DAWSONDOORS.COM

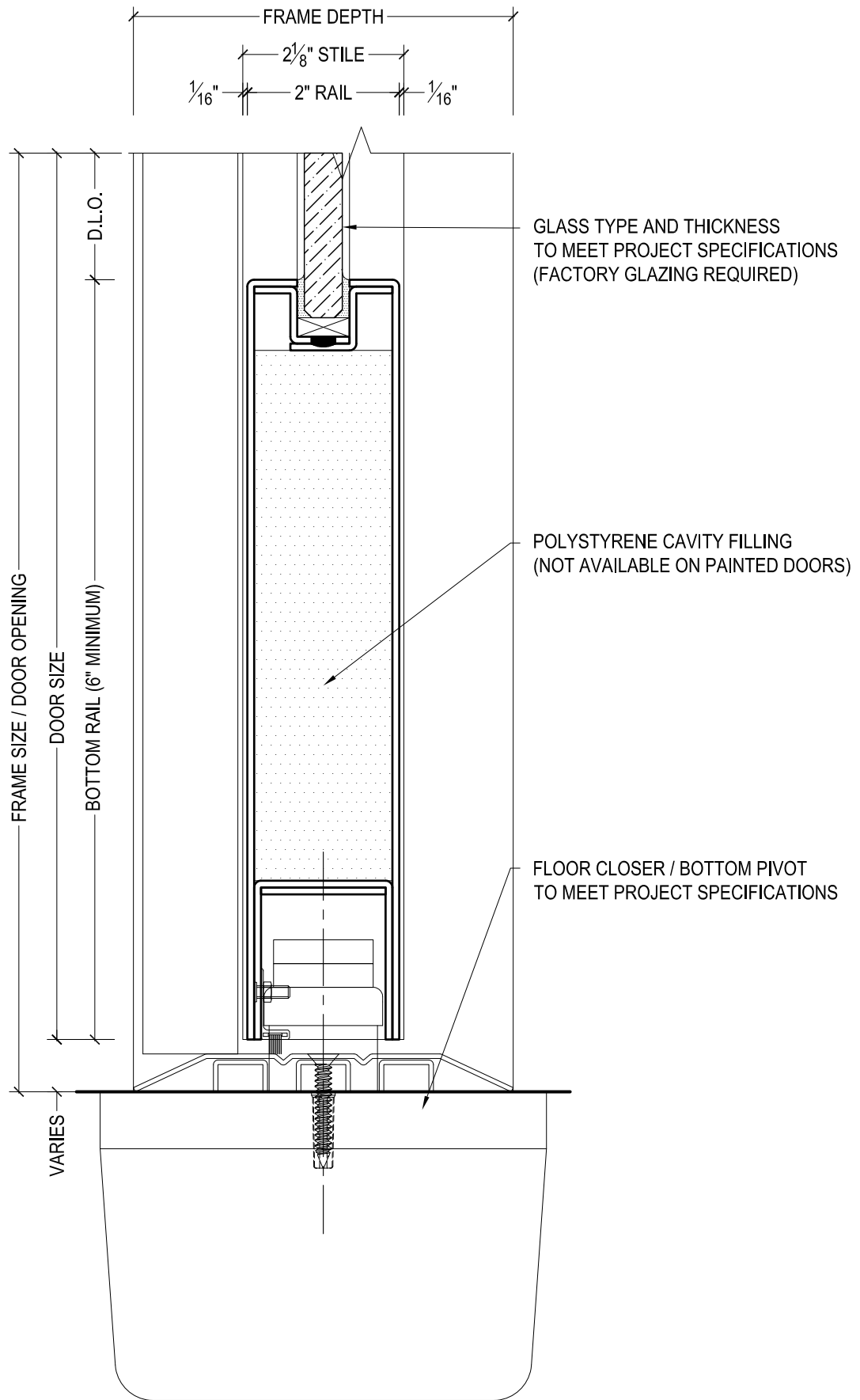
DRAWN BY:	JBL	DRAWING DATE:	12/6/19
SERIES #:	006-CP	DRAWING #:	6CPTRFS50
DESCRIPTION:	HEADER / TOP RAIL - UNS SERIES CENTER PIVOTED DOORS		



DRAWN BY:	JBL	DRAWING DATE:	12/6/19
SERIES #:	006-CP	DRAWING #:	6CCBNFS50
DESCRIPTION:	BOTTOM RAIL / FLOOR CLOSER - UNS SERIES CENTER PIVOTED DOORS - NO THRESHOLD -		



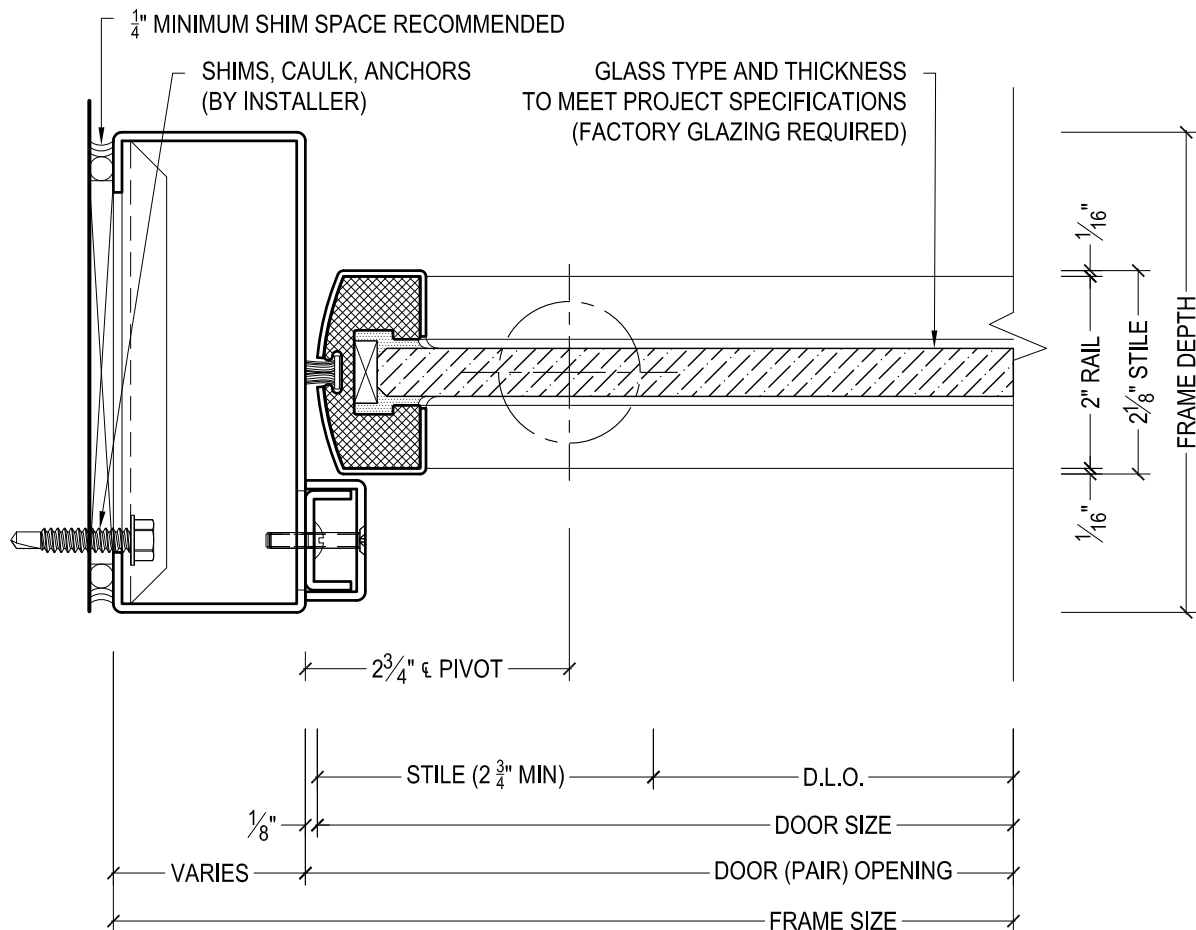
DRAWN BY:	JBL	DRAWING DATE:	12/6/19
SERIES #:	006-CP	DRAWING #:	6CCBQFS50
DESCRIPTION:	BOTTOM RAIL / FLOOR CLOSER - UNS SERIES CENTER PIVOTED DOORS - 1/4" THRESHOLD -		



DAWSON DOORS

825 ALLEN ST • JAMESTOWN, NY 14701 • (716) 664-3811 • WWW.DAWSONDOORS.COM

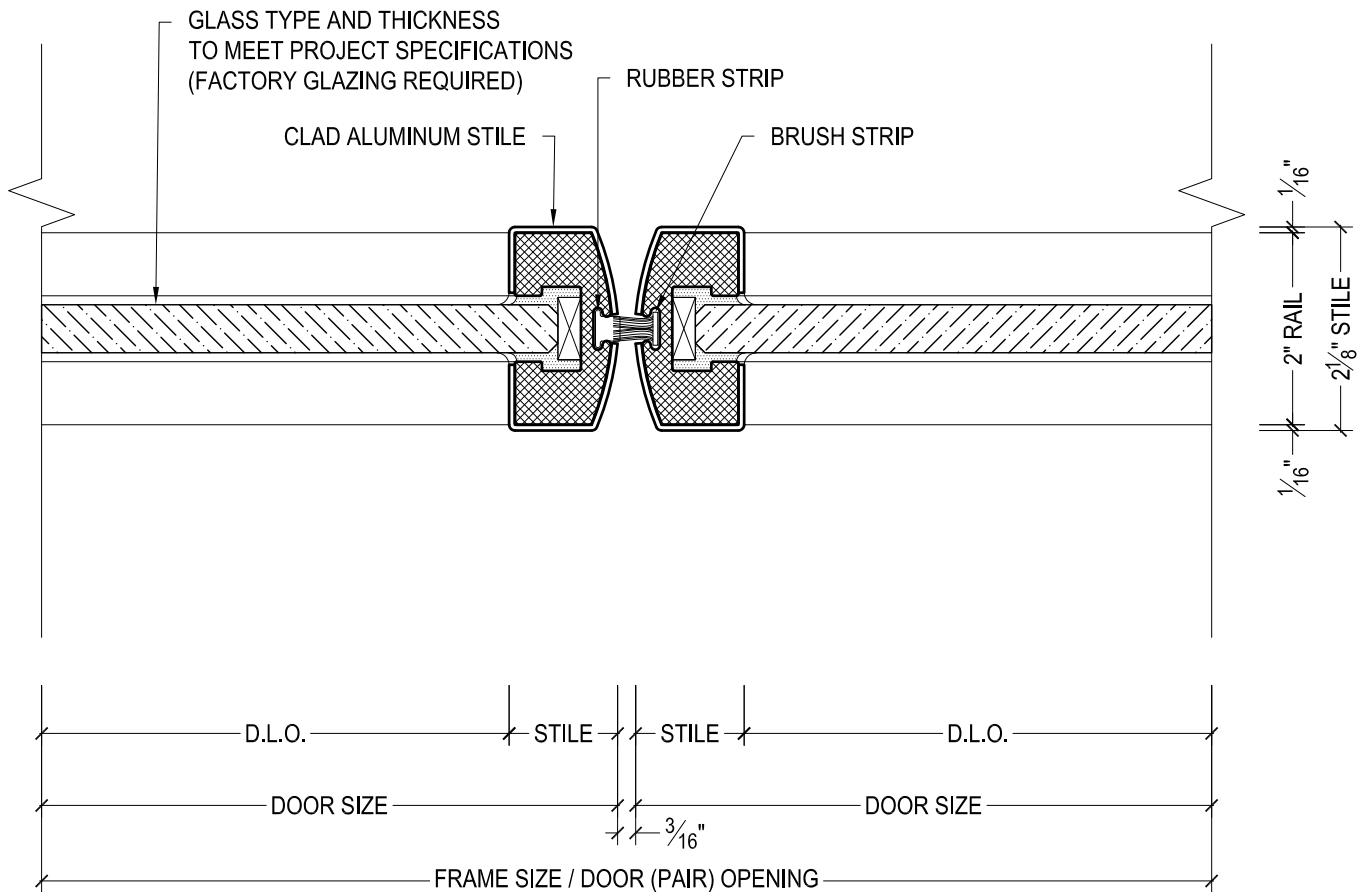
DRAWN BY:	JBL	DRAWING DATE:	12/6/19
SERIES #:	006-CP	DRAWING #:	6CCBHFS50
DESCRIPTION:	BOTTOM RAIL / FLOOR CLOSER - UNS SERIES CENTER PIVOTED DOORS - 1/2" THRESHOLD -		



DAWSON DOORS

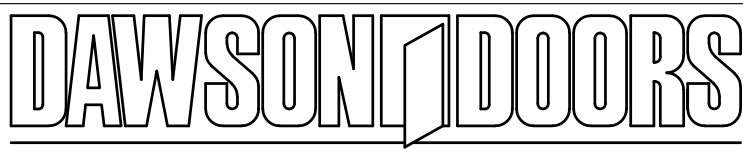
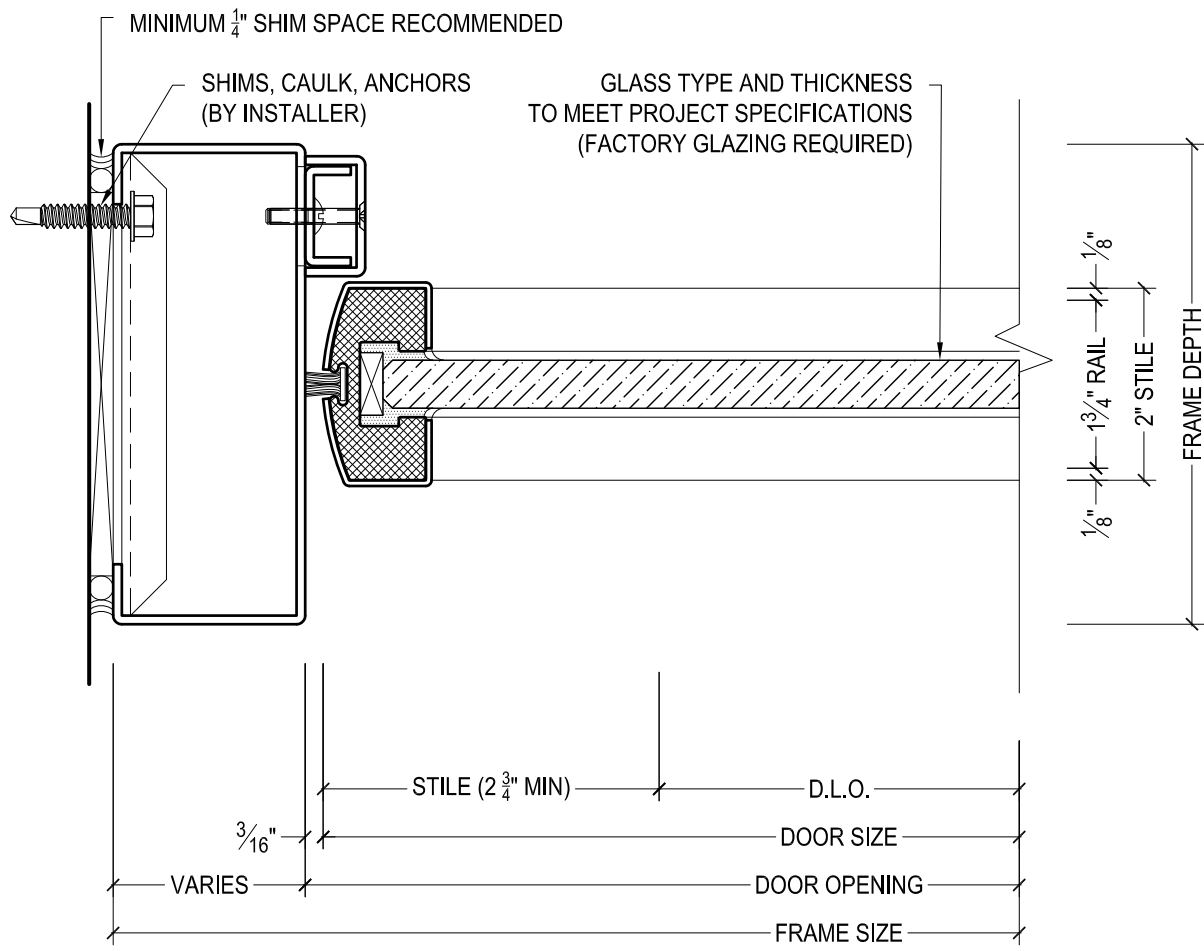
825 ALLEN ST • JAMESTOWN, NY 14701 • (716) 664-3811 • WWW.DAWSONDOORS.COM

DRAWN BY:	JBL	DRAWING DATE:	12/6/19
SERIES #:	006-CP	DRAWING #:	6CPPSFS50
DESCRIPTION:	JAMB / PIVOT STILE - UNS SERIES CENTER PIVOTED DOORS		



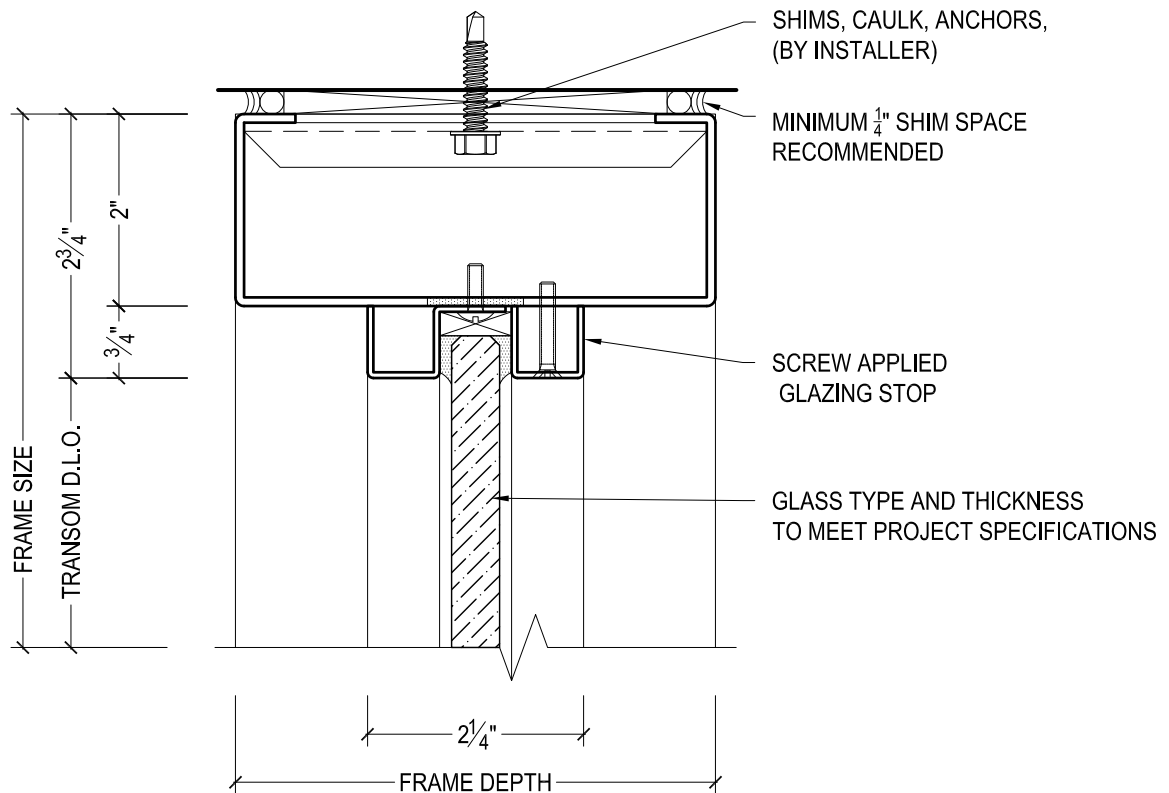
825 ALLEN ST • JAMESTOWN, NY 14701 • (716) 664-3811 • WWW.DAWSONDOORS.COM

DRAWN BY:	JBL	DRAWING DATE:	12/6/19
SERIES #:	006-CP	DRAWING #:	6CPMSFS50
DESCRIPTION:	MEETING STILES - UNS SERIES CENTER PIVOTED DOORS		



825 ALLEN ST • JAMESTOWN, NY 14701 • (716) 664-3811 • WWW.DAWSONDOORS.COM

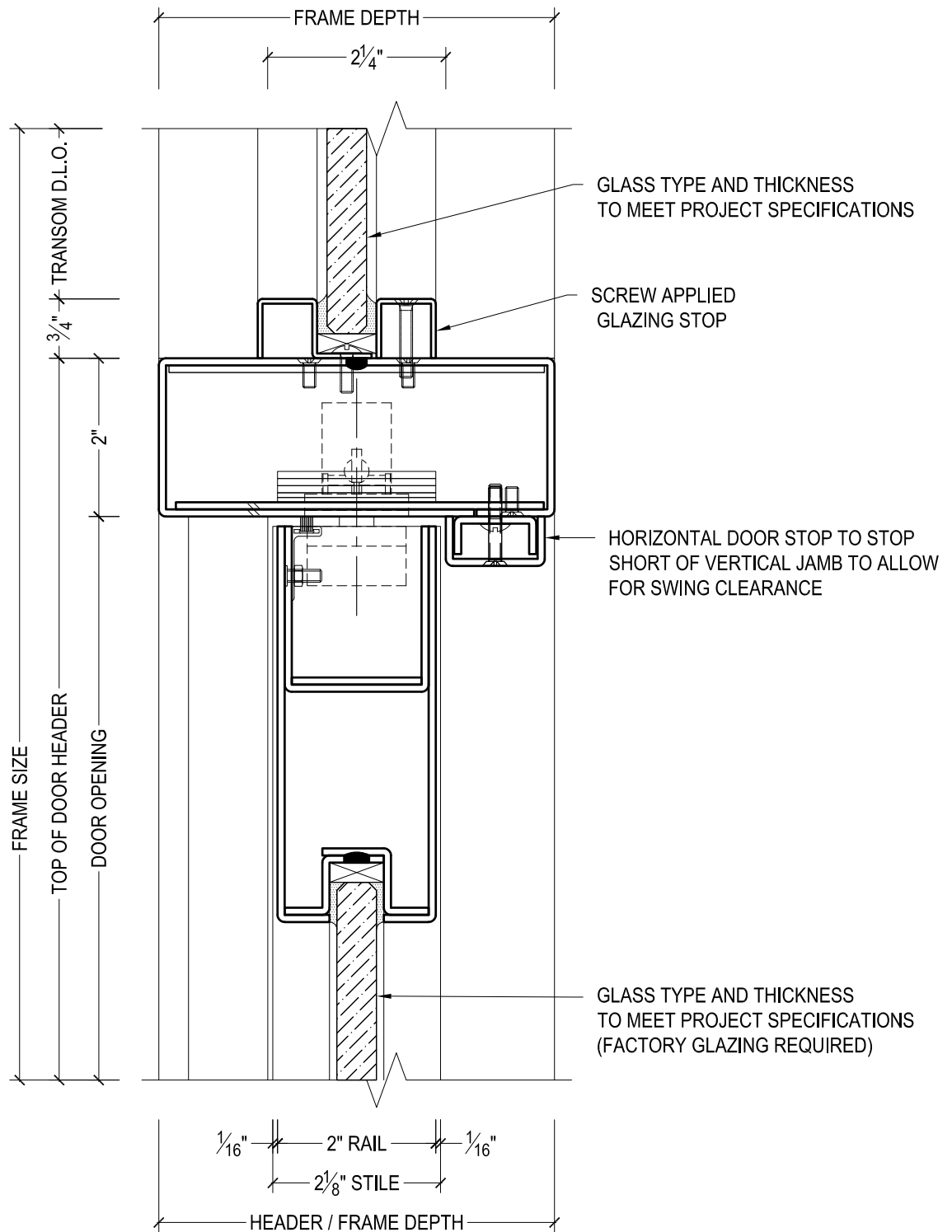
DRAWN BY:	JBL	DRAWING DATE:	12/6/19
SERIES #:	006-CP	DRAWING #:	6CPLSFS50
DESCRIPTION:	LOCK JAMB / STILE - UNS SERIES CENTER PIVOTED DOORS		



DAWSON DOORS

825 ALLEN ST • JAMESTOWN, NY 14701 • (716) 664-3811 • WWW.DAWSONDOORS.COM

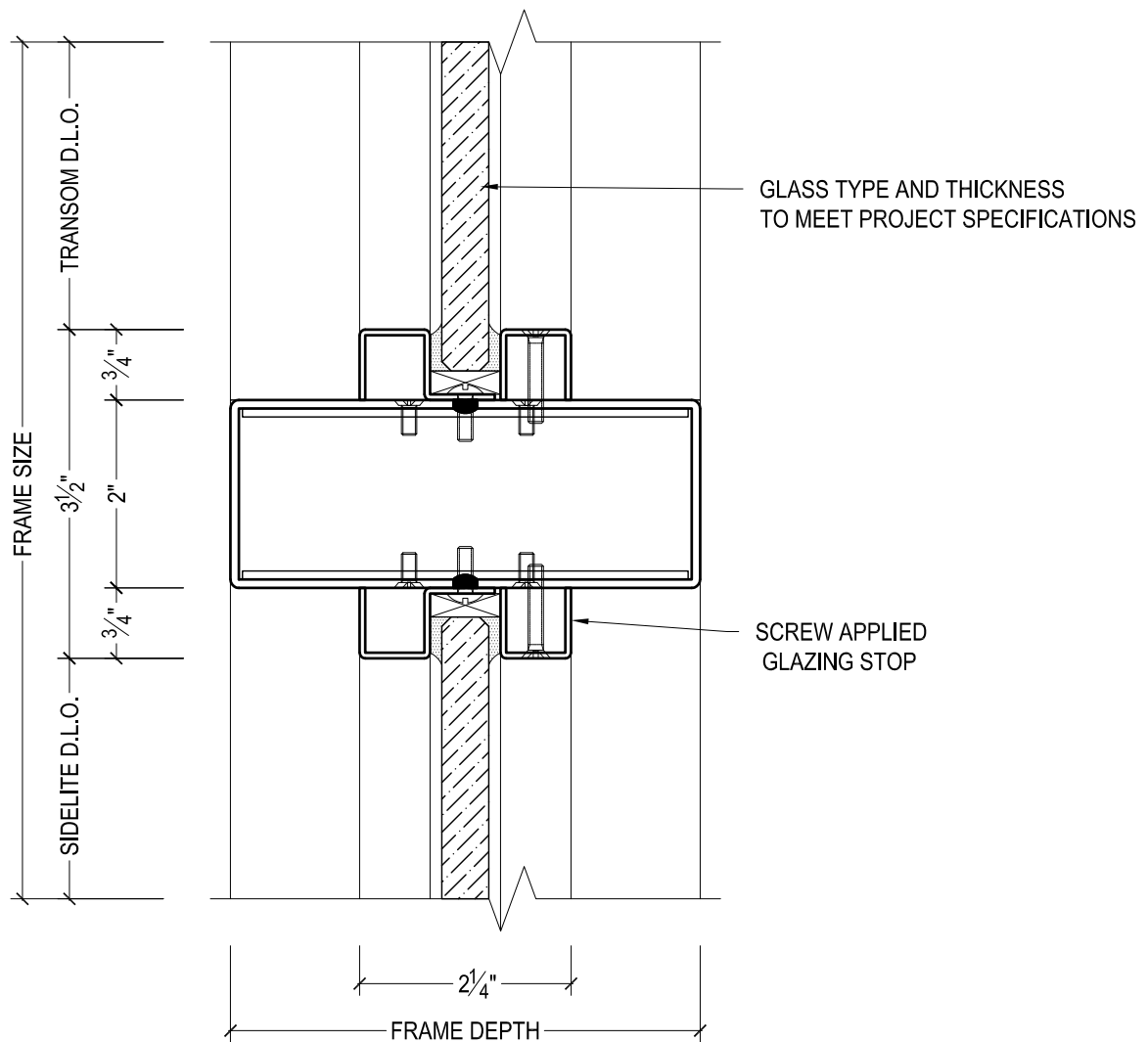
DRAWN BY:	JBL	DRAWING DATE:	12/6/19
SERIES #:	006-CP	DRAWING #:	FXXSHAS50
DESCRIPTION:	TRANSOM HEADER WITH APPLIED STOPS		



DAWSON DOORS

825 ALLEN ST • JAMESTOWN, NY 14701 • (716) 664-3811 • WWW.DAWSONDOORS.COM

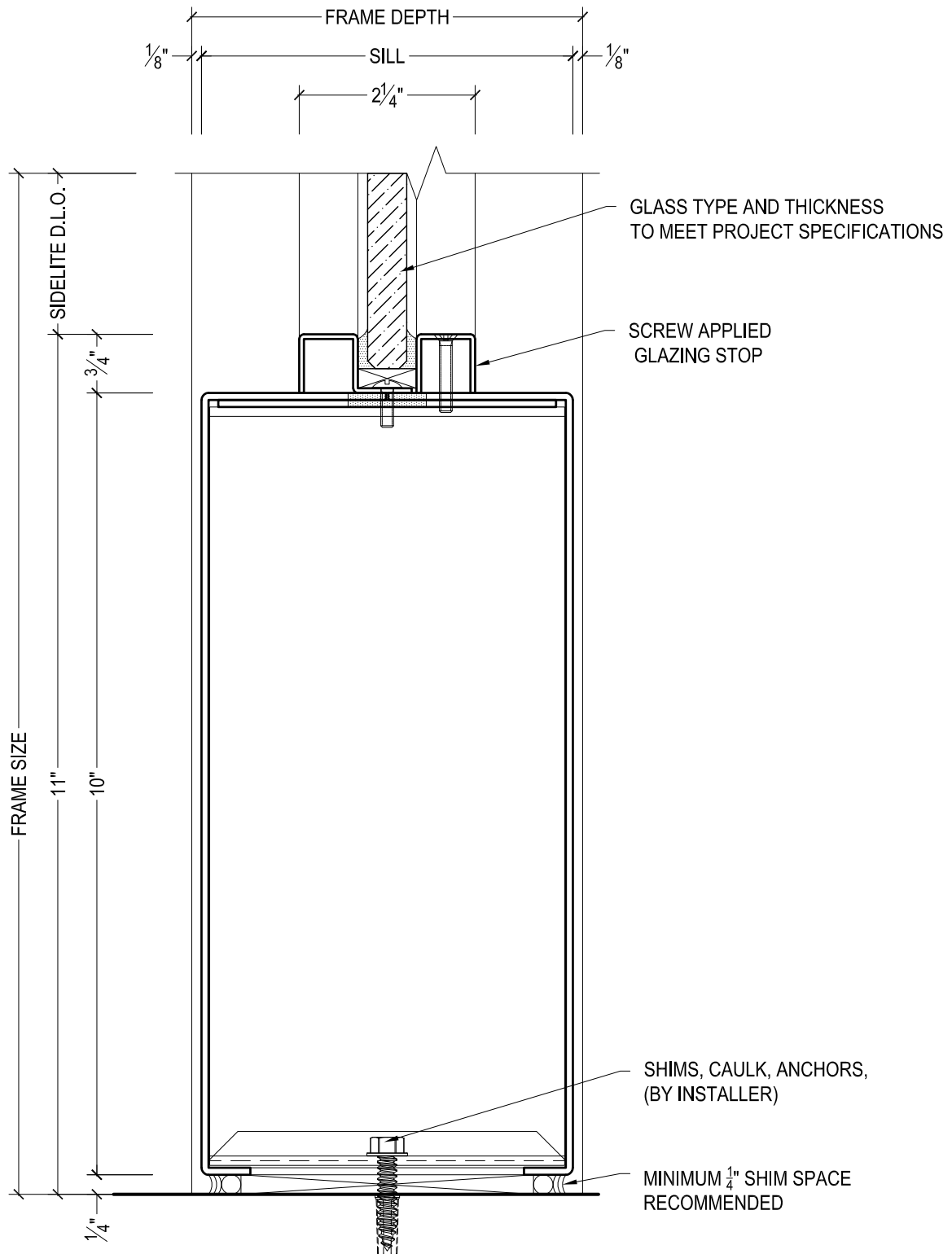
DRAWN BY:	JBL	DRAWING DATE:	12/6/19
SERIES #:	006-CP	DRAWING #:	6CPHFS50
DESCRIPTION:	HEADER / TOP RAIL - UNS SERIES CENTER PIVOTED DOORS WITH TRANSOM ABOVE WITH APPLIED STOPS		



DAWSON DOORS

825 ALLEN ST • JAMESTOWN, NY 14701 • (716) 664-3811 • WWW.DAWSONDOORS.COM

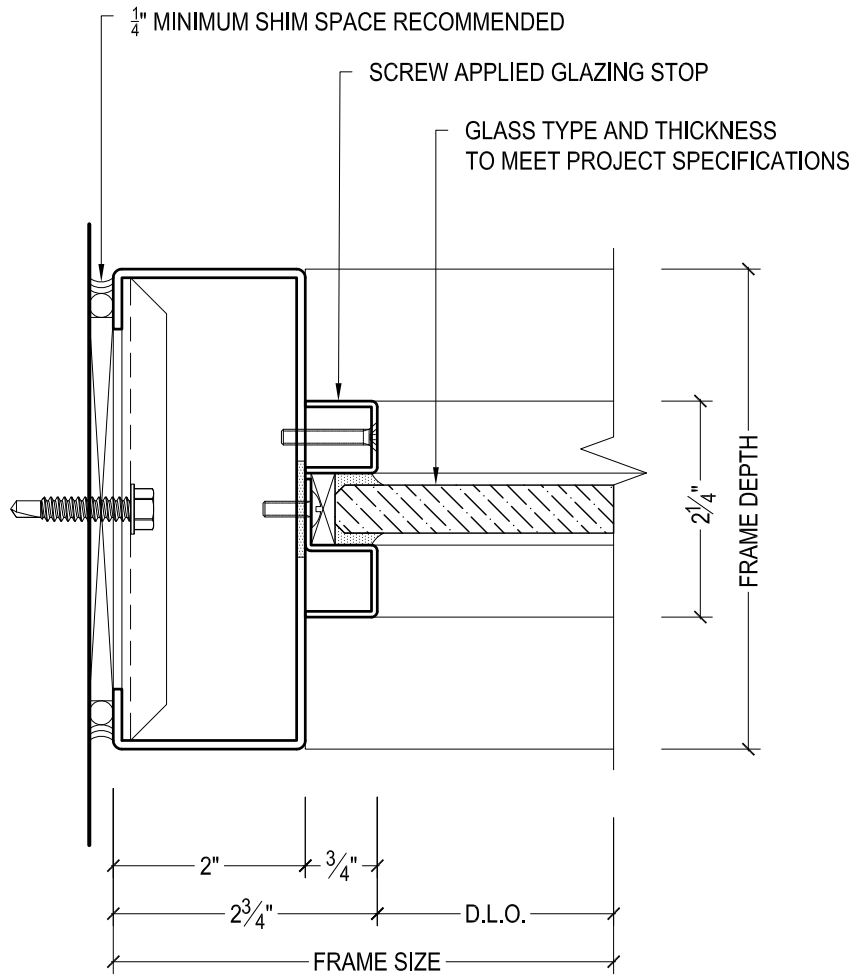
DRAWN BY:	JBL	DRAWING DATE:	12/6/19
SERIES #:	006-CP	DRAWING #:	FXXSCAS50
DESCRIPTION:	TRANSOM ABOVE & SIDELITE BELOW WITH APPLIED STOPS		



DAWSON DOORS

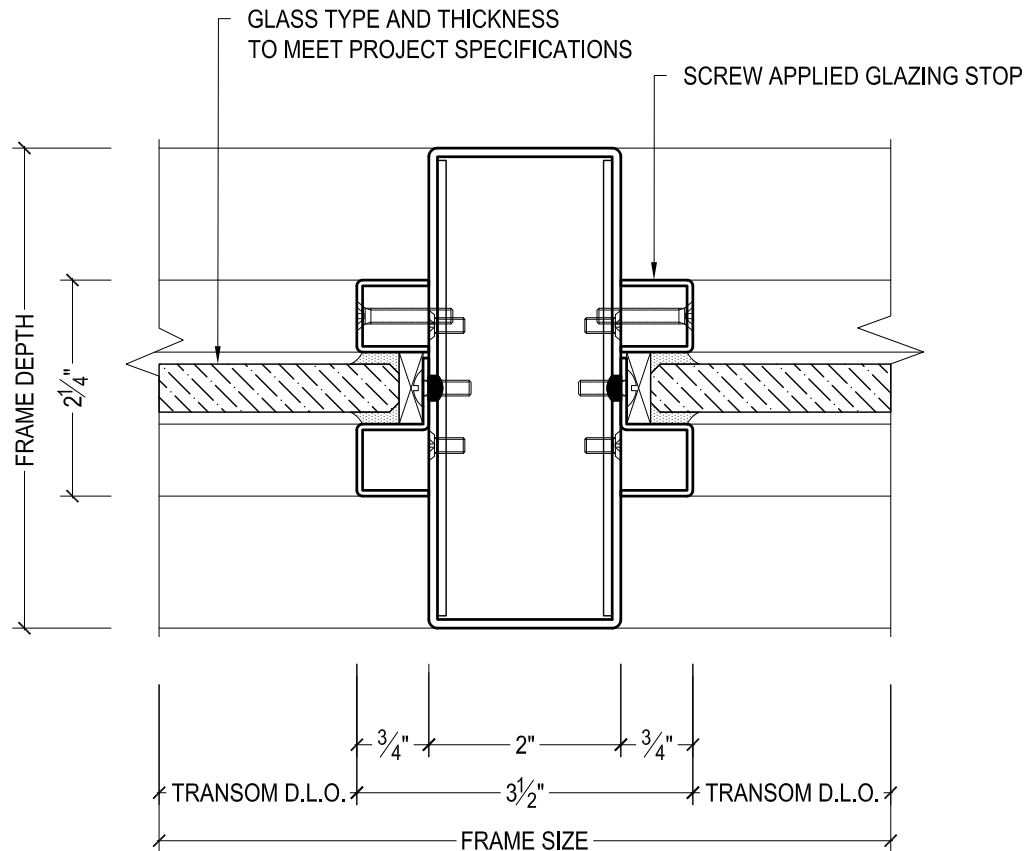
825 ALLEN ST • JAMESTOWN, NY 14701 • (716) 664-3811 • WWW.DAWSONDOORS.COM

DRAWN BY:	JBL	DRAWING DATE:	12/6/19
SERIES #:	006-CP	DRAWING #:	FXXSSAS50
DESCRIPTION:	SIDELITE SILL WITH APPLIED STOPS		



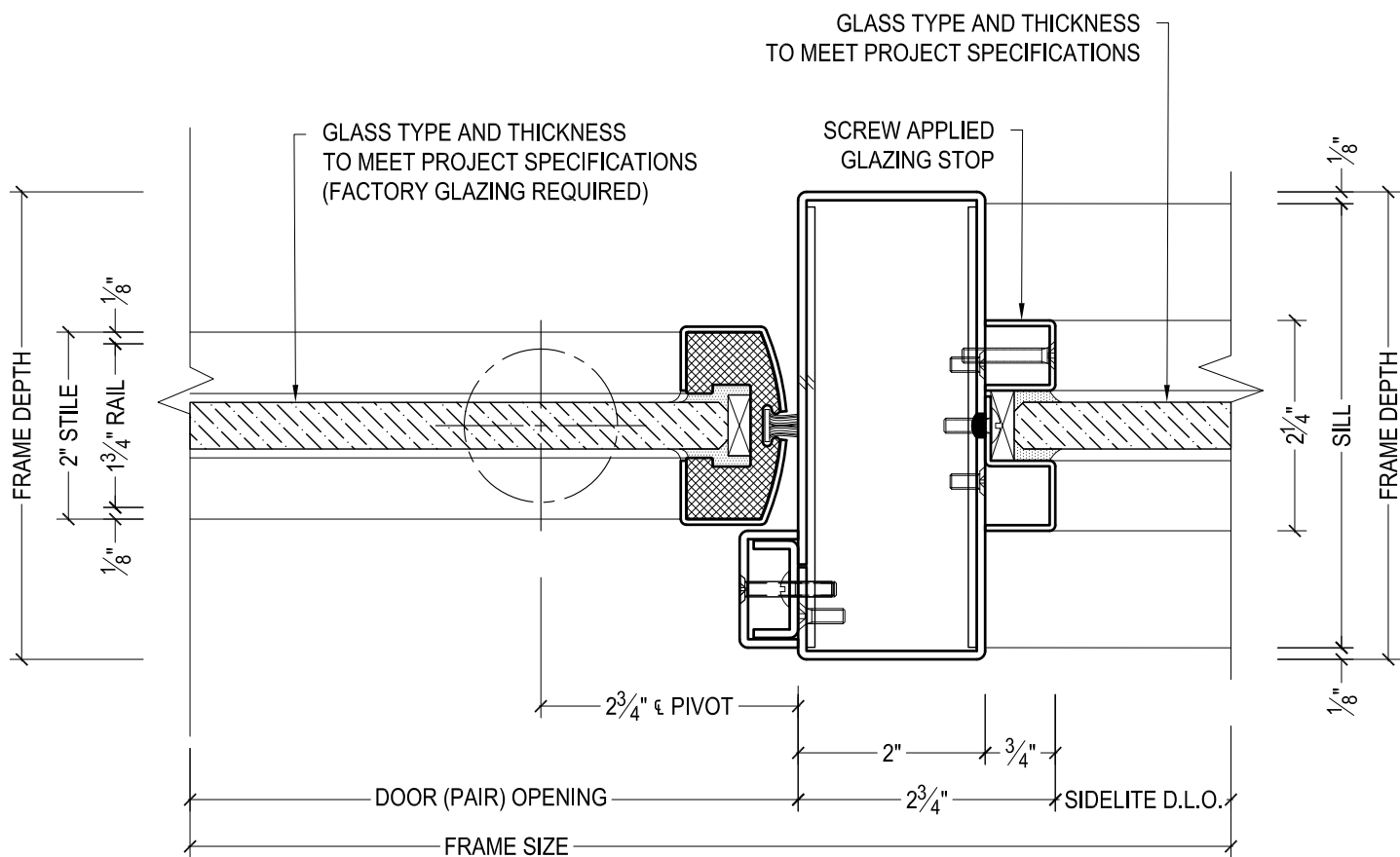
825 ALLEN ST • JAMESTOWN, NY 14701 • (716) 664-3811 • WWW.DAWSONDOORS.COM

DRAWN BY:	JBL	DRAWING DATE:	12/6/19
SERIES #:	006-CP	DRAWING #:	FXXTWAS50
DESCRIPTION:	TRANSOM JAMB WITH APPLIED STOPS		



825 ALLEN ST • JAMESTOWN, NY 14701 • (716) 664-3811 • WWW.DAWSONDOORS.COM

DRAWN BY:	JBL	DRAWING DATE:	12/6/19
SERIES #:	006-CP	DRAWING #:	FXXTVAS50
DESCRIPTION:	TRANSOM MULLION WITH APPLIED STOPS		



825 ALLEN ST • JAMESTOWN, NY 14701 • (716) 664-3811 • WWW.DAWSONDOORS.COM

DRAWN BY:	JBL	DRAWING DATE:	12/6/19
SERIES #:	006-CP	DRAWING #:	6CPSMAS50
DESCRIPTION:	JAMB / PIVOT STILE / SIDELITE MULLION - UNS SERIES CENTER PIVOTED DOORS WITH FIXED FLAT GLAZING. JAMB TREATED AS SIDELITE MULLION		