

## 1. MATERIALS & FINISHES

- A. STAINLESS STEEL, BRASS, AND BRONZE ARE AVAILABLE IN #6 SATIN, #4 SATIN, OR NON-DIRECTIONAL (ANGEL HAIR) FINISH. DAWSON DOES NOT PROVIDE LACQUERED FINISH ON BRASS OR BRONZE PRODUCTS. WET PAINTED OR POWDER COATED DOORS WILL BE FABRICATED FROM GALVANNEALED STEEL. CONSULT FACTORY FOR CUSTOM FINISHES.
- B. STAINLESS STEEL AND PAINTED GALVANNEALED STEEL RUGGED SERIES DOORS TO BE FABRICATED WITH 11 GA DOOR PANS AND 14 GA INTERNAL COMPONENTS. GLASS STOPS TO BE FABRICATED FROM 14 GA MATERIAL.
- C. BRASS AND BRONZE RUGGED SERIES DOORS TO BE FABRICATED WITH .120" DOOR PANS AND .090" INTERNAL COMPONENTS. GLASS STOPS TO BE FABRICATED FROM .060" MATERIAL.
- D. STAINLESS STEEL AND PAINTED GALVANNEALED STEEL FRAMES AND DOOR STOPS TO BE FABRICATED FROM 13 GA MATERIAL. SPACER JAMBS ON EXPOSED HINGE TUBE OPENINGS AND TRANSOM AND SIDELITE GLASS STOPS TO BE FABRICATED FROM 16 GA MATERIAL.
- E. BRASS AND BRONZE FRAMES AND DOOR STOPS TO BE FABRICATED FROM .090" MATERIAL. SPACER JAMBS ON EXPOSED HINGE TUBE OPENINGS AND TRANSOM AND SIDELITE GLASS STOPS TO BE FABRICATED FROM .060" MATERIAL.
- F. STAINLESS STEEL AND PAINTED GALVANNEALED STEEL HINGE TUBES ARE CLAD IN 16 GA MATERIAL. NOTE THAT BALANCED ARMS ARE ONLY AVAILABLE IN STAINLESS STEEL OR BRASS FINISHES.
- G. BRASS AND BRONZE EXPOSED HINGE TUBES ARE CLAD IN .060" MATERIAL. NOTE THAT BALANCED ARMS ARE ONLY AVAILABLE IN STAINLESS STEEL OR BRASS FINISHES.

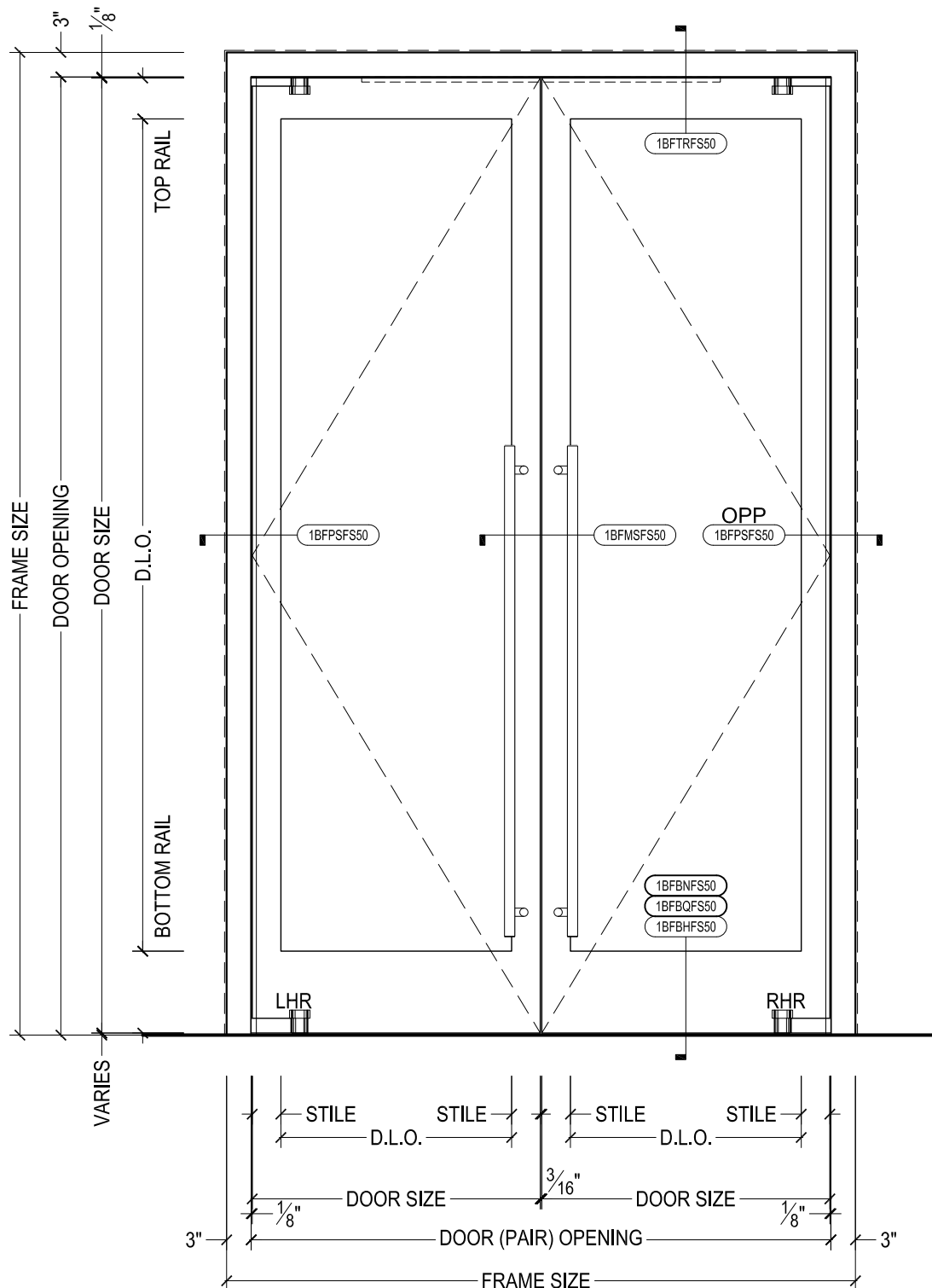
## 2. STANDARD DIMENSIONS

- A. BALANCED DOORS HAVE A MINIMUM TOP RAIL OF  $4\frac{1}{2}"$ . STILE AND RAIL DOORS HAVE A MINIMUM STILE WIDTH OF  $2\frac{3}{4}"$ . ALL DOORS HAVE A STANDARD BOTTOM RAIL DIMENSION OF 10" TO MEET ADA CODE. MINIMUM BOTTOM RAIL OF 6" WILL NOT MEET ADA. MINIMUM DIMENSIONS SUBJECT TO CHANGE BASED ON HARDWARE - CONSULT FACTORY.
- B. FRAME PROFILE STANDARD DIMENSIONS ARE 3" FACE x 6" DEPTH. STANDARD HEADER HEIGHT (FACE) FOR AUTO OPERATED BALANCED DOORS IS 6". CONSULT FACTORY FOR CUSTOM SIZES.
- C. SEE GLAZING DETAILS FOR STANDARD GLASS POCKET AND STANDARD GLASS BITE. CONSULT FACTORY FOR CUSTOM GLASS POCKET OR CUSTOM GLASS BITE.
- D. BALANCED DOOR UNDERCUT IS AVAILABLE AS  $\frac{1}{4}"$ ,  $\frac{1}{2}"$ , OR  $\frac{3}{4}"$ . UNDERCUT IS DRIVEN BY THRESHOLD HEIGHT.
- E. HORIZONTAL DOOR STOPS TO STOP SHORT ON PIVOT SIDE FOR SWING CLEARANCE. DOOR STOPS FABRICATED  $\frac{5}{8}"$  HIGH STANDARD VARYING WITH HARDWARE REQUIREMENTS. WIDTH VARIES AS REQUIRED. CONSULT FACTORY FOR CUSTOM SIZES AND PROFILES.
- F. MINIMUM BALANCED DOOR WIDTH TO MEET ADA MINIMUM OF 32" CLEAR OPENING IS  $35\frac{3}{16}"$  PER PAIR OF DOORS & 36" FOR SINGLE DOORS. MINIMUM AUTO OPERATED BALANCED DOOR WIDTH IS 36" DUE TO HARDWARE LIMITATIONS.



825 ALLEN ST • JAMESTOWN, NY 14701 • (716) 664-3811 • WWW.DAWSONDOORS.COM

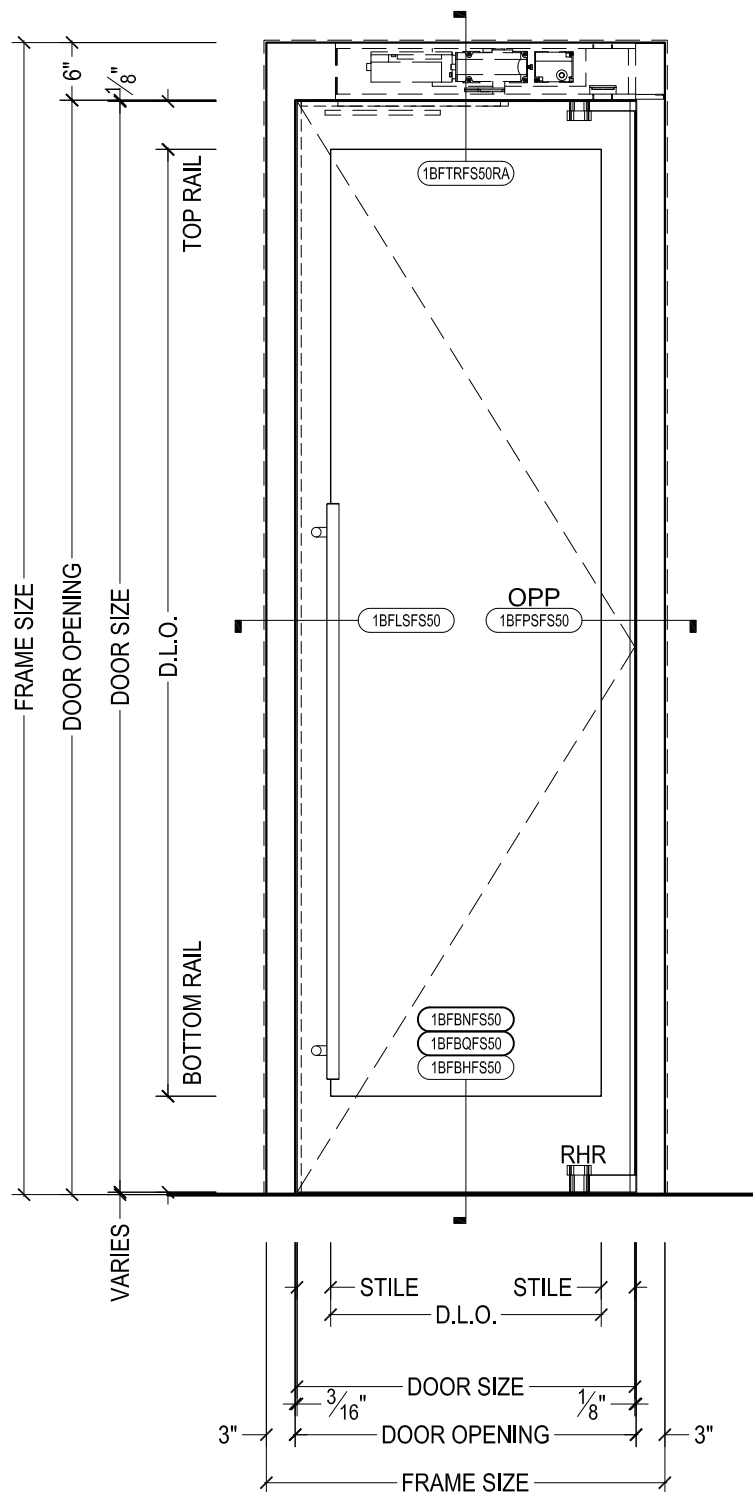
DRAWN BY:	AG	DRAWING DATE:	12/2/19
SERIES #:	001-BAL	DRAWING #:	NOTES 1
DESCRIPTION:	GENERAL NOTES FOR 001 RUGGED SERIES DOORS WITH BALANCED HARDWARE		



# DAWSON DOORS

825 ALLEN ST • JAMESTOWN, NY 14701 • (716) 664-3811 • WWW.DAWSONDOORS.COM

DRAWN BY:	AG	DRAWING DATE:	12/2/19
SERIES #:	001-BAL	DRAWING #:	EL-MAN-PAIR
DESCRIPTION:	ELEVATION - STILE AND RAIL RUGGED SERIES BALANCED DOORS		



# DAWSON DOORS

825 ALLEN ST • JAMESTOWN, NY 14701 • (716) 664-3811 • WWW.DAWSONDOORS.COM

DRAWN BY:

AG

DRAWING DATE:

12/2/19

SERIES #:

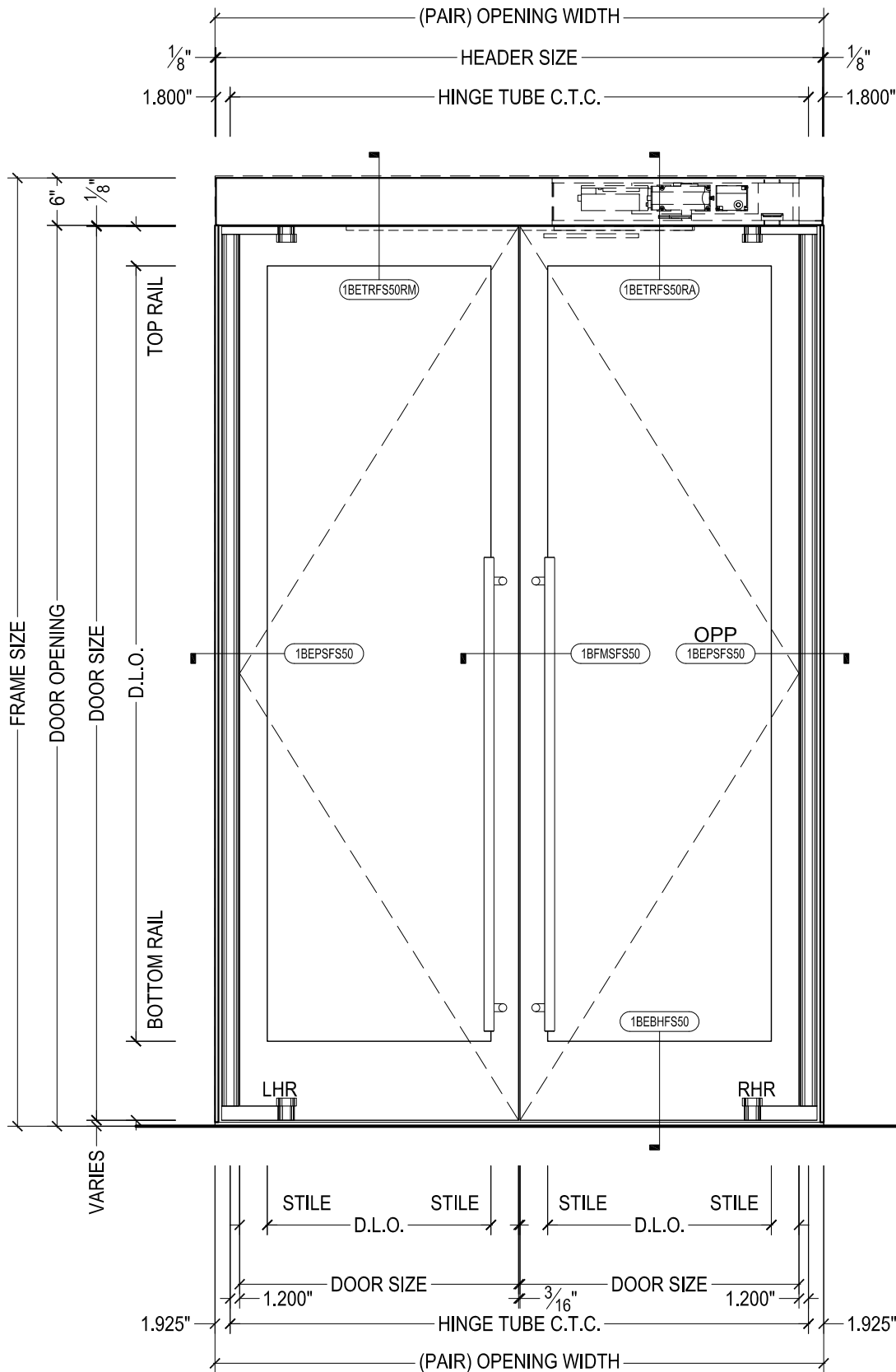
001-BAL

DRAWING #:

EL-AUTO-SIN

DESCRIPTION:

ELEVATION - STILE AND RAIL RUGGED SERIES BALANCED DOOR WITH RECORD AUTO OPERATOR



# DAWSON DOORS

825 ALLEN ST • JAMESTOWN, NY 14701 • (716) 664-3811 • WWW.DAWSONDOORS.COM

DRAWN BY:	AG	DRAWING DATE:	12/2/19
SERIES #:	001-BAL	DRAWING #:	EL-EHT-PAIR
DESCRIPTION:	ELEVATION - STILE AND RAIL RUGGED SERIES BALANCED DOORS WITH RECORD AUTO OPERATOR AND EXPOSED HINGE TUBES		

Technical drawing of a window assembly showing dimensions and component labels.

**Dimensions:**

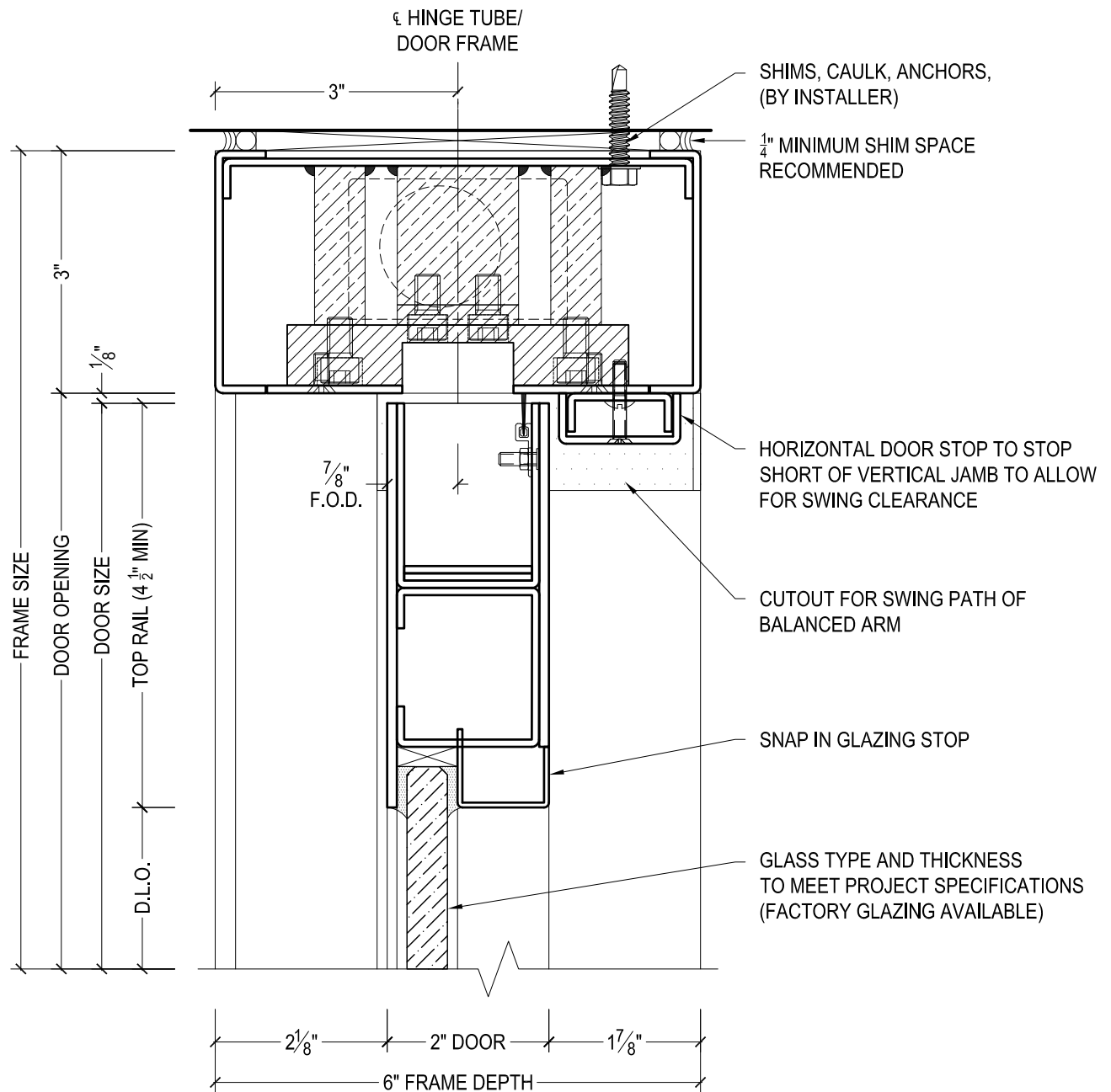
- Top: TRANSOM D.L.O. (3 3/4" on each side), FRAME SIZE (4 1/2"), TRANSOM D.L.O. (3 3/4" on each side).
- Right: TRANSOM D.L.O. (3 3/4"), SIDE LITE D.L.O. (4 1/2"), FRAME SIZE (11").
- Bottom: DOOR (PAIR) OPENING (3"), FRAME SIZE (3 3/4"), SIDE LITE D.L.O. (3 3/4").

**Component Labels:**

- FXXTWAS50 (Top Left Transom)
- FXXTHAS50 (Top Left Transom)
- FXXTVAS50 (Top Right Transom)
- OPP FXXTWAS50 (Top Right Transom)
- 1BFTHFS50 (Left Door)
- 1BFTHFS50 (Right Door)
- FXXTZAS50 (Right Side Lite)
- 1BFMAS50 (Right Side Lite)
- OPP FXXTWAS50 (Right Side Lite)
- FXXSAS50 (Bottom Right Side Lite)
- LHR (Left Hinge)
- RHR (Right Hinge)

825 ALLEN ST • JAMESTOWN, NY 14701 • (716) 664-3811 • WWW.DAWSONDOORS.COM

ELEVATION - STILE AND RAIL RUGGED SERIES BALANCED  
DOORS WITH FRAME SIDELITE AND TRANSOM



**DAWSON DOORS**

825 ALLEN ST • JAMESTOWN, NY 14701 • (716) 664-3811 • WWW.DAWSONDOORS.COM

DRAWN BY:

AG

DRAWING DATE:

12/2/19

SERIES #:

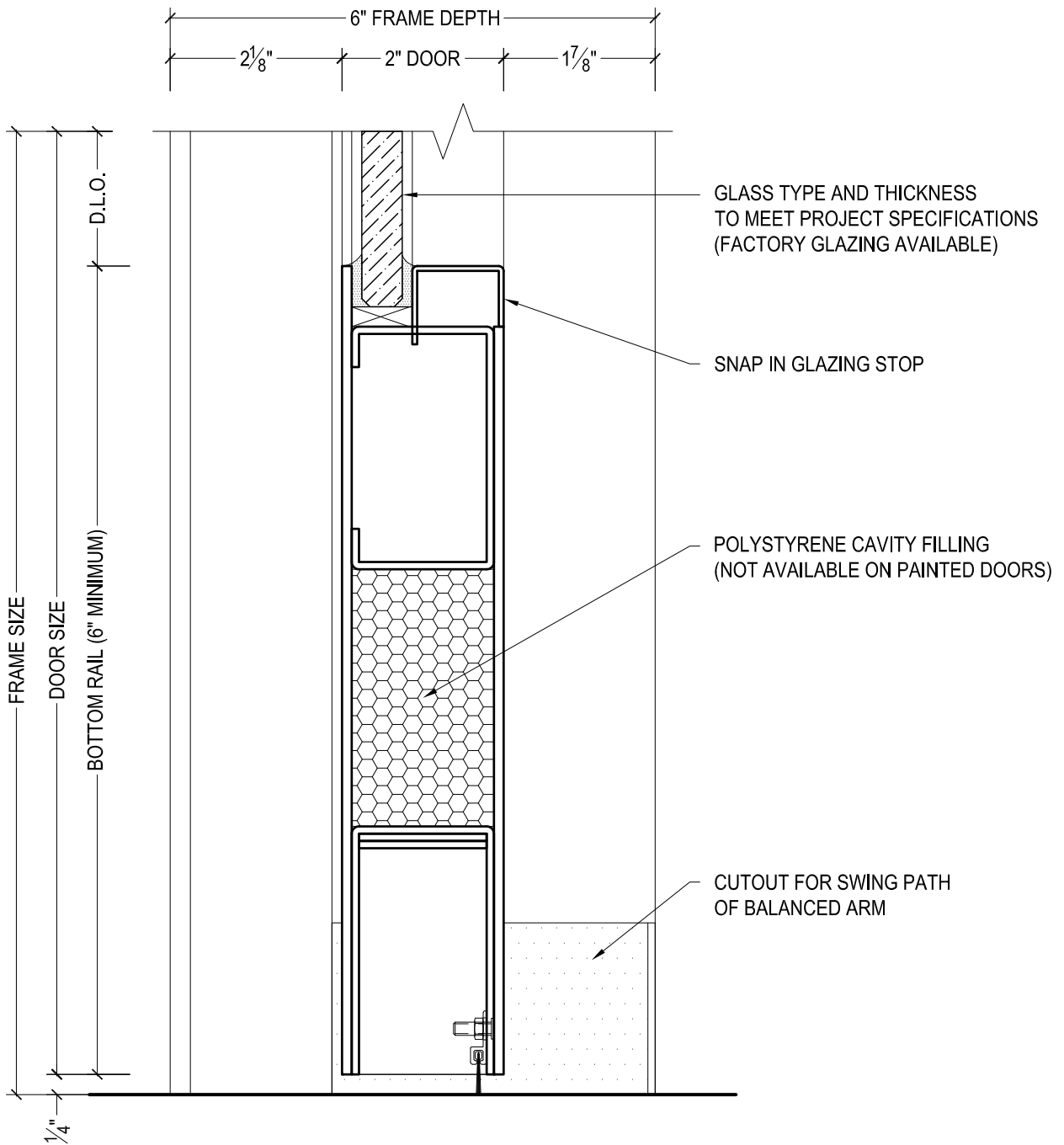
001-BAL

DRAWING #:

1BFTRFS50

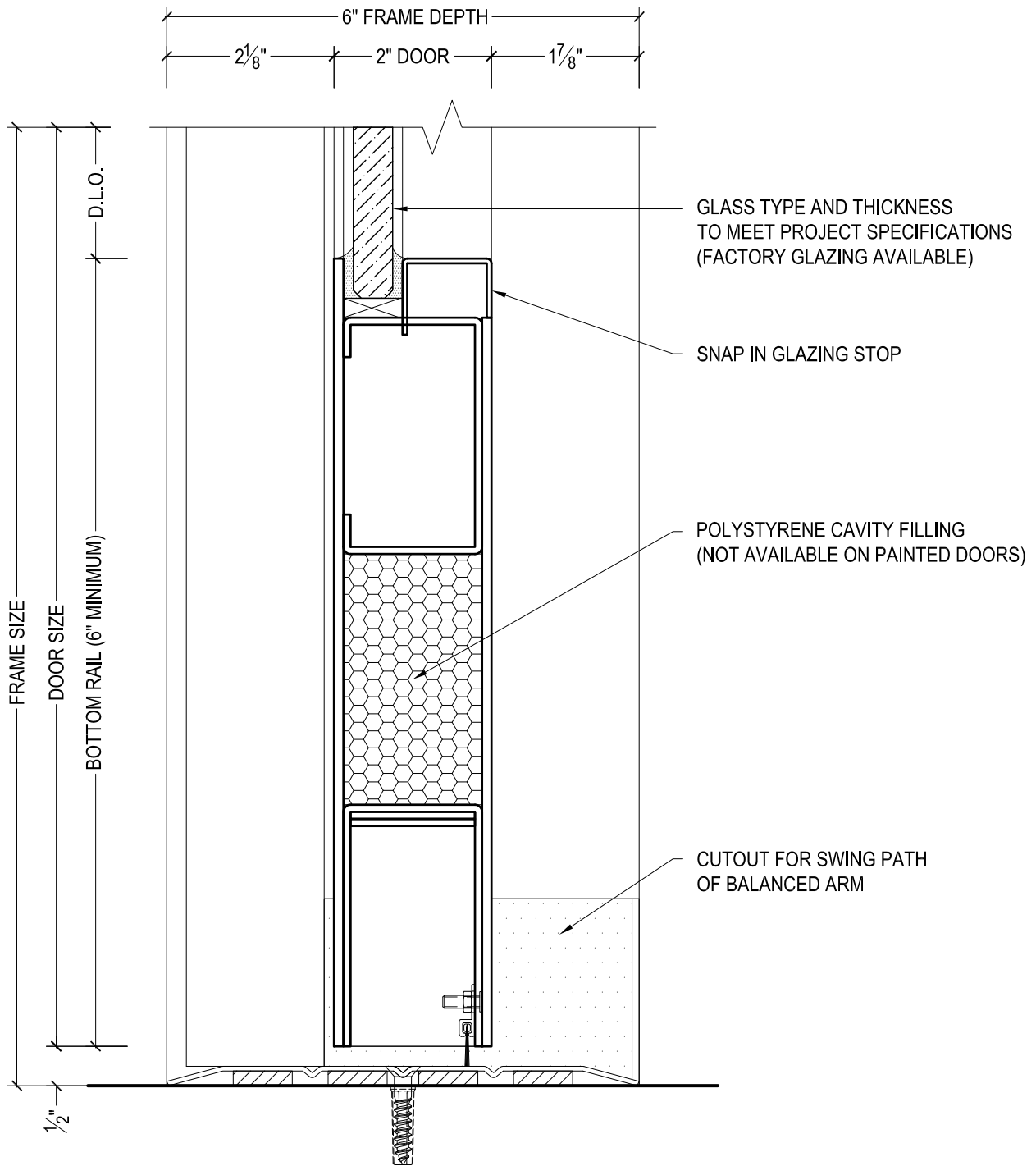
DESCRIPTION:

HEADER / TOP RAIL - RUGGED SERIES BALANCED DOORS



825 ALLEN ST • JAMESTOWN, NY 14701 • (716) 664-3811 • WWW.DAWSONDOORS.COM

DRAWN BY:	AG	DRAWING DATE:	12/2/19
SERIES #:	001-BAL	DRAWING #:	1BFBNFS50
DESCRIPTION:	BOTTOM RAIL - RUGGED SERIES BALANCED DOORS - NO THRESHOLD -		

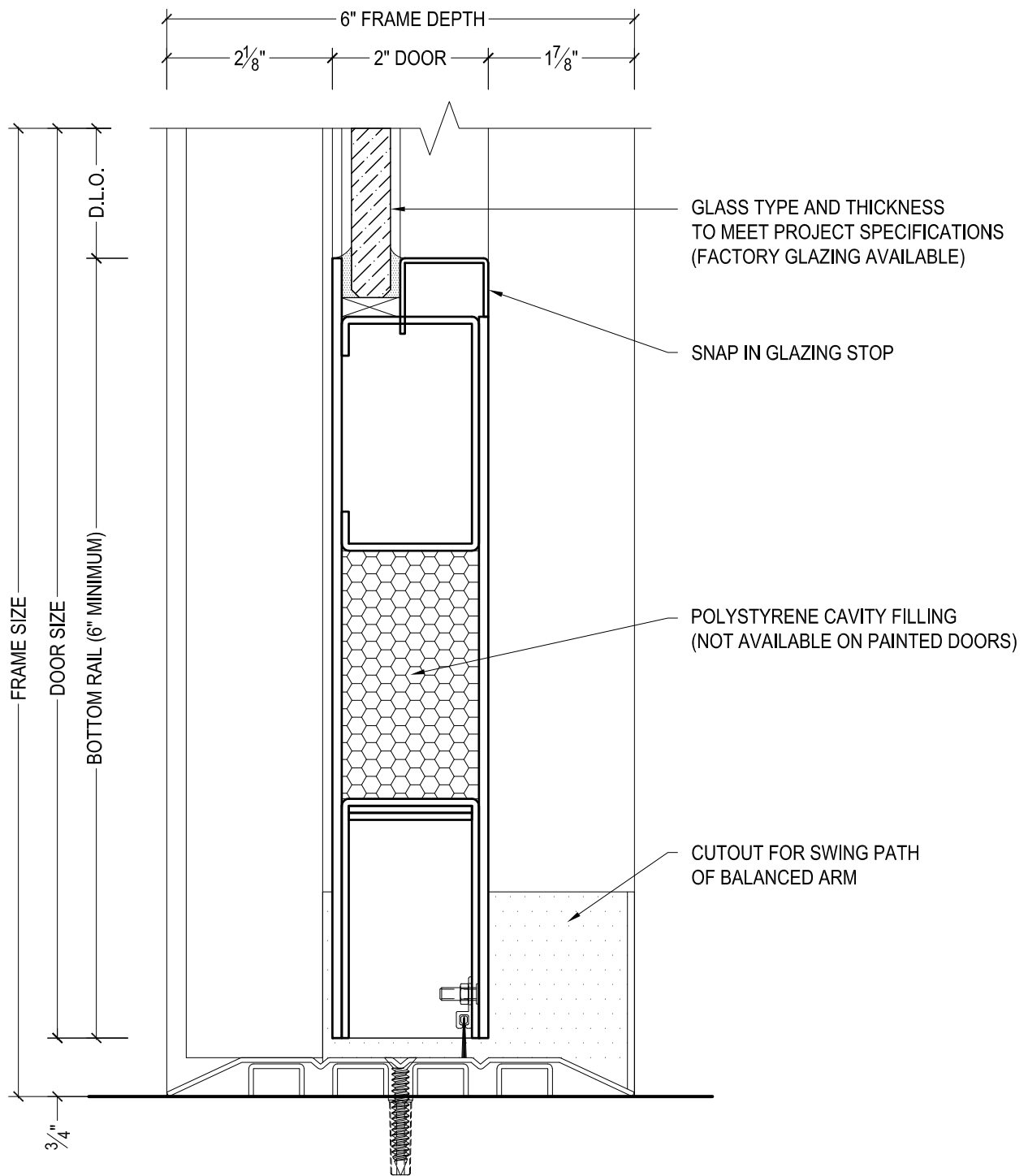


**DAWSON DOORS**

825 ALLEN ST • JAMESTOWN, NY 14701 • (716) 664-3811 • WWW.DAWSONDOORS.COM

DRAWN BY:	AG	DRAWING DATE:	12/2/19
SERIES #:	001-BAL	DRAWING #:	1BFBQFS50
DESCRIPTION:	BOTTOM RAIL - RUGGED SERIES BALANCED DOORS - 1/4" THRESHOLD -		





# DAWSON DOORS

825 ALLEN ST • JAMESTOWN, NY 14701 • (716) 664-3811 • WWW.DAWSONDOORS.COM

DRAWN BY:

AG

DRAWING DATE:

12/2/19

SERIES #:

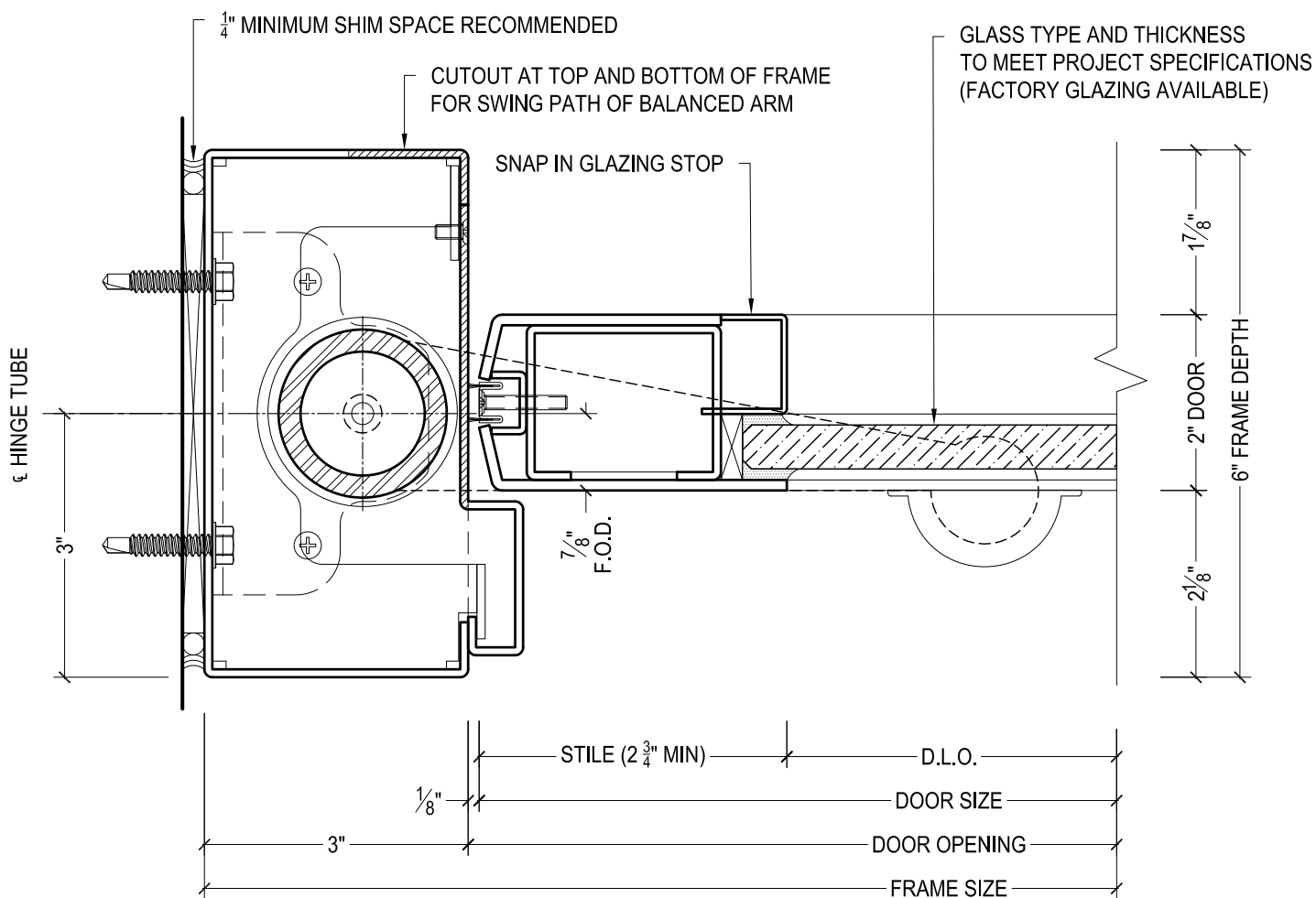
001-BAL

DRAWING #:

1BFBHFS50

DESCRIPTION:

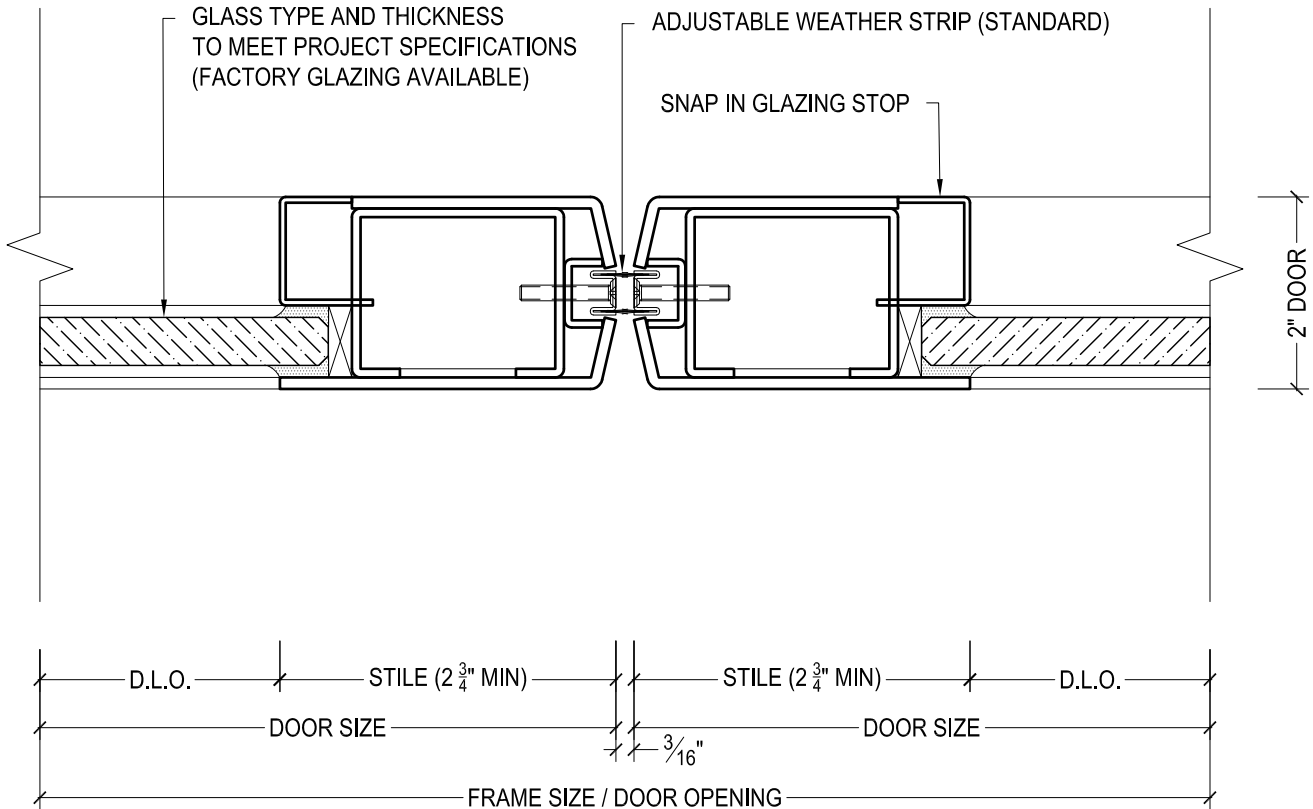
BOTTOM RAIL - RUGGED SERIES BALANCED DOORS  
-1/2" THRESHOLD -



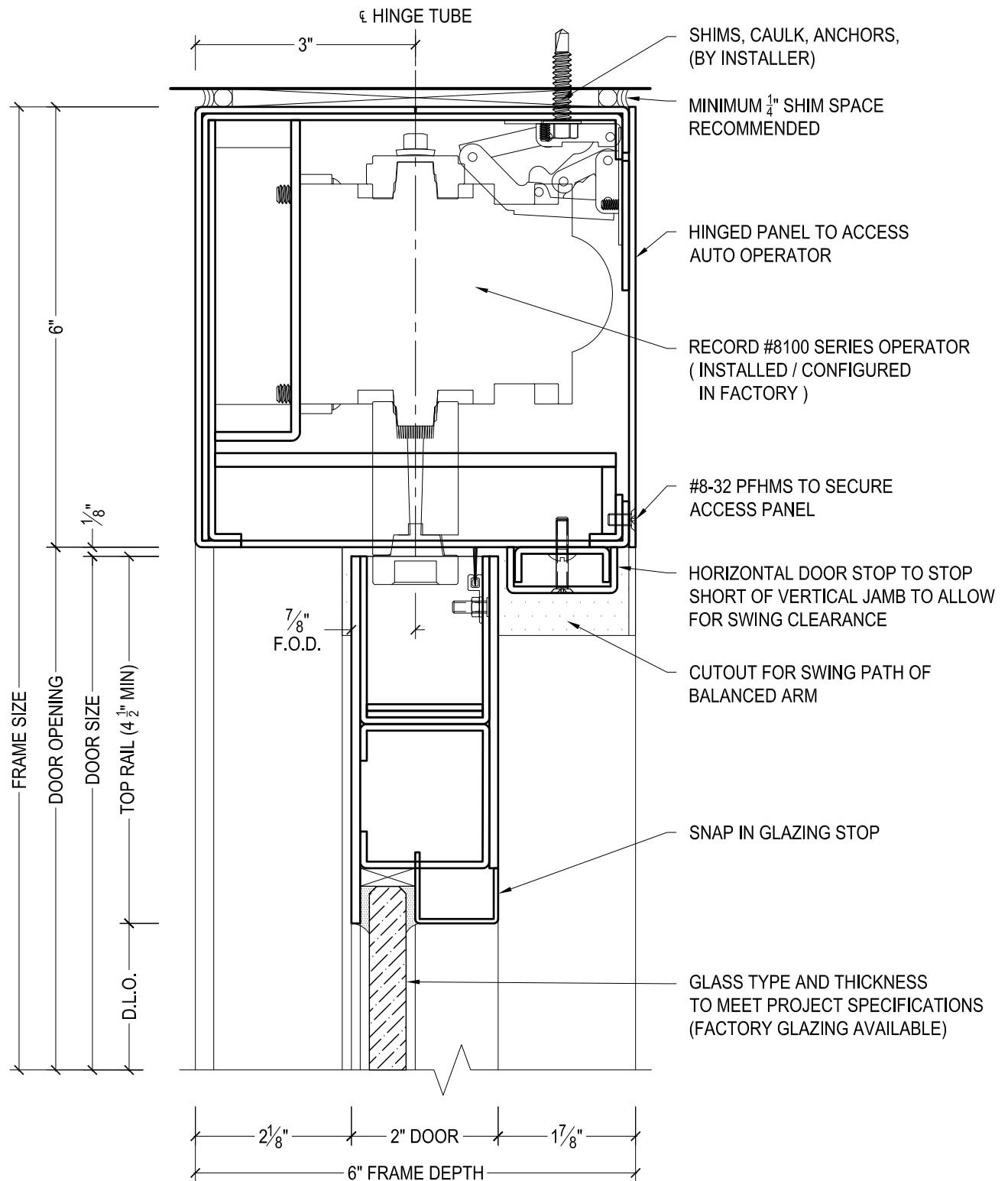
# DAWSON DOORS

825 ALLEN ST • JAMESTOWN, NY 14701 • (716) 664-3811 • WWW.DAWSONDOORS.COM

DRAWN BY:	AG	DRAWING DATE:	12/2/19
SERIES #:	001-BAL	DRAWING #:	1BFPSFS50
DESCRIPTION:	PIVOT JAMB / STILE - RUGGED SERIES BALANCED DOORS		



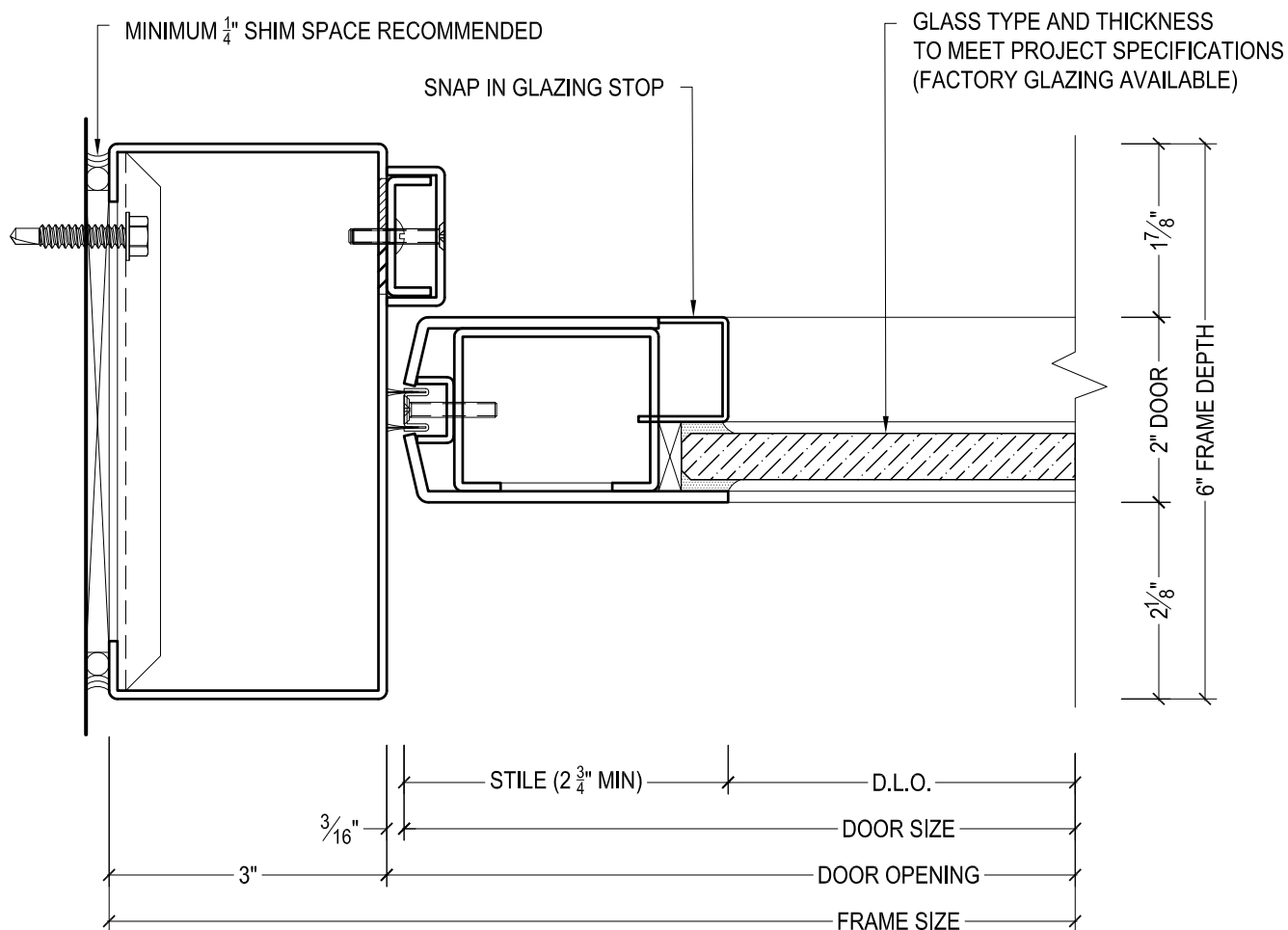
DRAWN BY:	AG	DRAWING DATE:	12/2/19
SERIES #:	001-BAL	DRAWING #:	1BFMSFS50
DESCRIPTION:	MEETING STILES - RUGGED SERIES BALANCED DOORS		



# DAWSON DOORS

825 ALLEN ST • JAMESTOWN, NY 14701 • (716) 664-3811 • WWW.DAWSONDOORS.COM

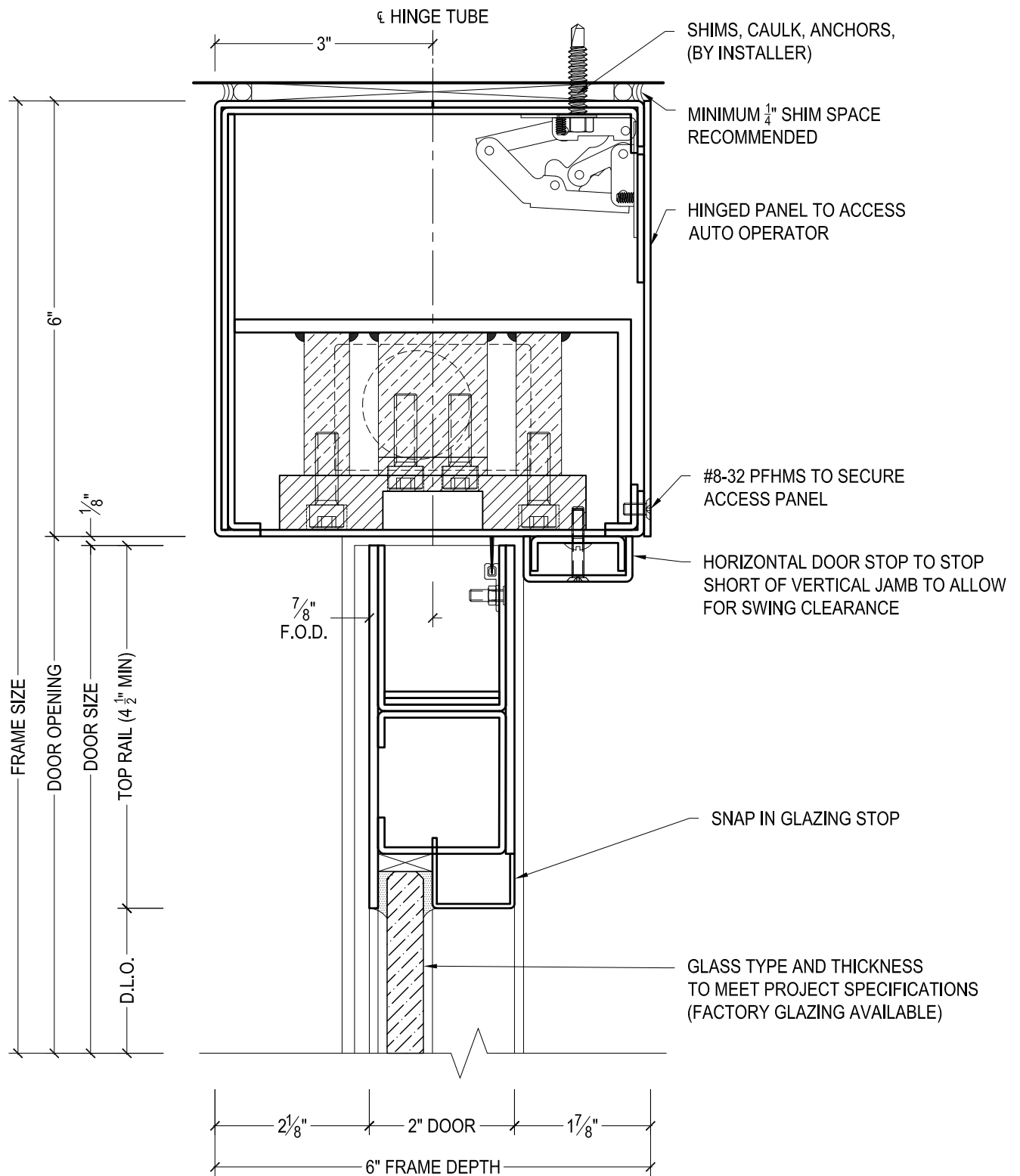
DRAWN BY:	AG	DRAWING DATE:	12/2/19
SERIES #:	001-BAL	DRAWING #:	1BFTRFS50RA
DESCRIPTION:	HEADER / TOP RAIL - RUGGED SERIES BALANCED DOORS WITH RECORD AUTO OPERATOR		



# DAWSON DOORS

825 ALLEN ST • JAMESTOWN, NY 14701 • (716) 664-3811 • WWW.DAWSONDOORS.COM

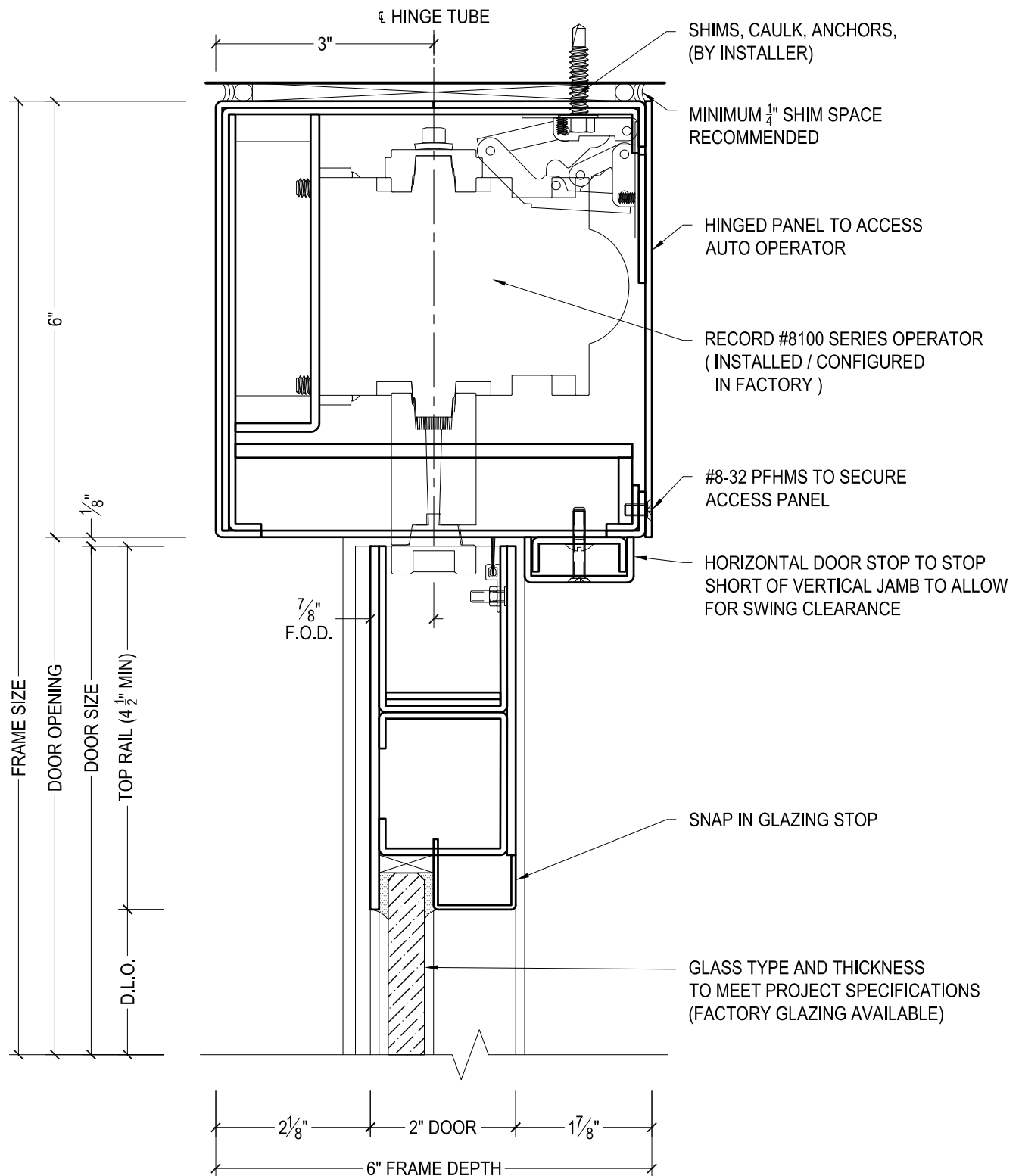
DRAWN BY:	AG	DRAWING DATE:	12/2/19
SERIES #:	001-BAL	DRAWING #:	1BFLSFS50
DESCRIPTION:	LOCK JAMB / STILE - RUGGED SERIES BALANCED DOORS		



**DAWSON DOORS**

825 ALLEN ST • JAMESTOWN, NY 14701 • (716) 664-3811 • WWW.DAWSONDOORS.COM

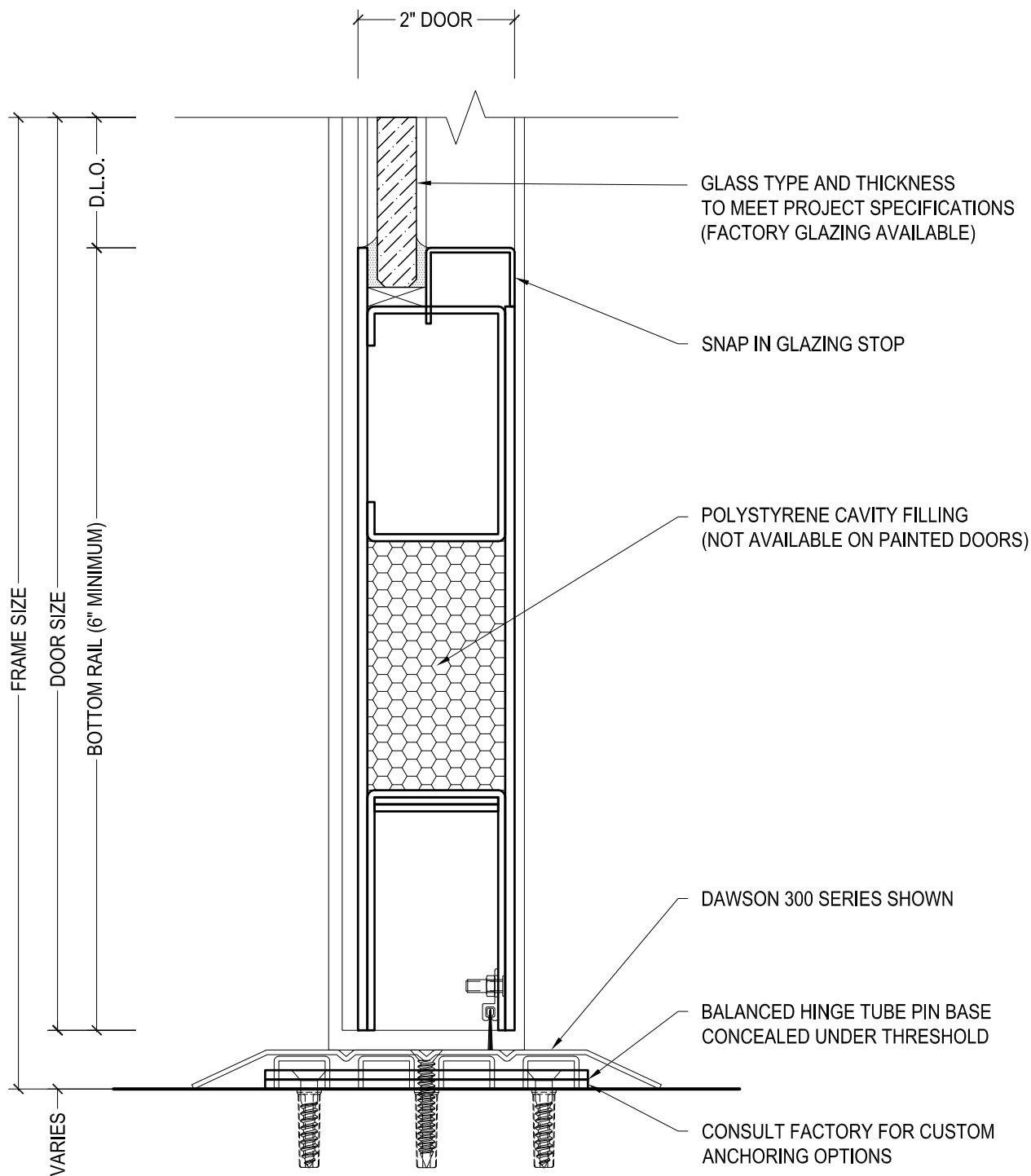
DRAWN BY:	AG	DRAWING DATE:	12/2/19
SERIES #:	001-BAL	DRAWING #:	1BETRFS50RM
DESCRIPTION:	HEADER / TOP RAIL - RUGGED SERIES BALANCED DOORS ON MANUAL DOOR LEAF WITH 6" TALL HEADER FOR EXPOSED HINGE TUBE		



**DAWSON DOORS**

825 ALLEN ST • JAMESTOWN, NY 14701 • (716) 664-3811 • WWW.DAWSONDOORS.COM

DRAWN BY:	AG	DRAWING DATE:	12/2/19
SERIES #:	001-BAL	DRAWING #:	1BETRF550RA
DESCRIPTION:	HEADER / TOP RAIL - RUGGED SERIES BALANCED DOORS ON AUTO OPERATED DOOR LEAF FOR EXPOSED HINGE TUBE		

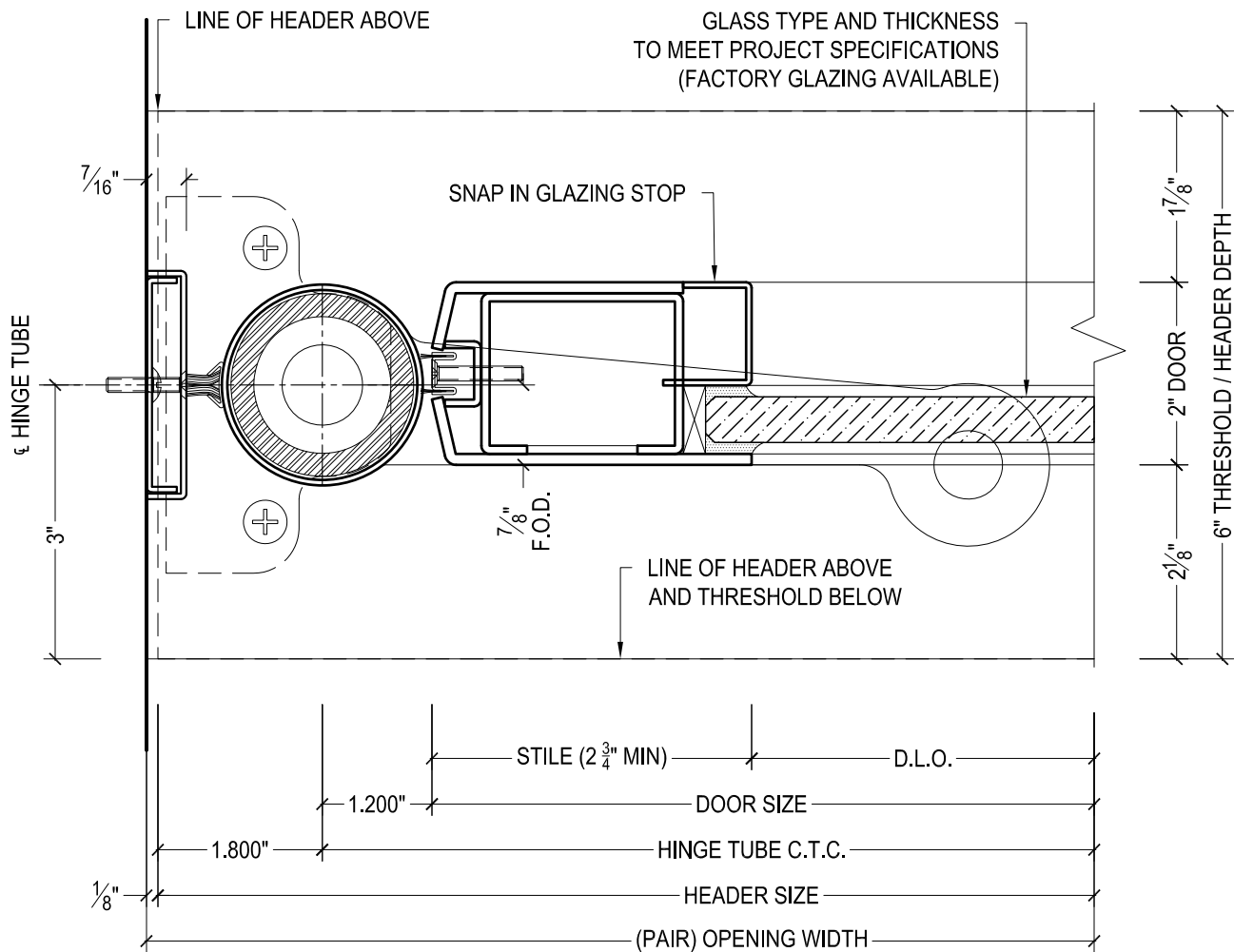


# DAWSON DOORS

825 ALLEN ST • JAMESTOWN, NY 14701 • (716) 664-3811 • WWW.DAWSONDOORS.COM

DRAWN BY:	AG	DRAWING DATE:	12/2/19
SERIES #:	001-BAL	DRAWING #:	1BEBHFS50
DESCRIPTION:	BOTTOM RAIL - RUGGED SERIES BALANCED DOORS, DAWSON 300 SERIES THRESHOLD SHOWN TO CONCEAL HINGE TUBE BASE - 1/2" THRESHOLD -		

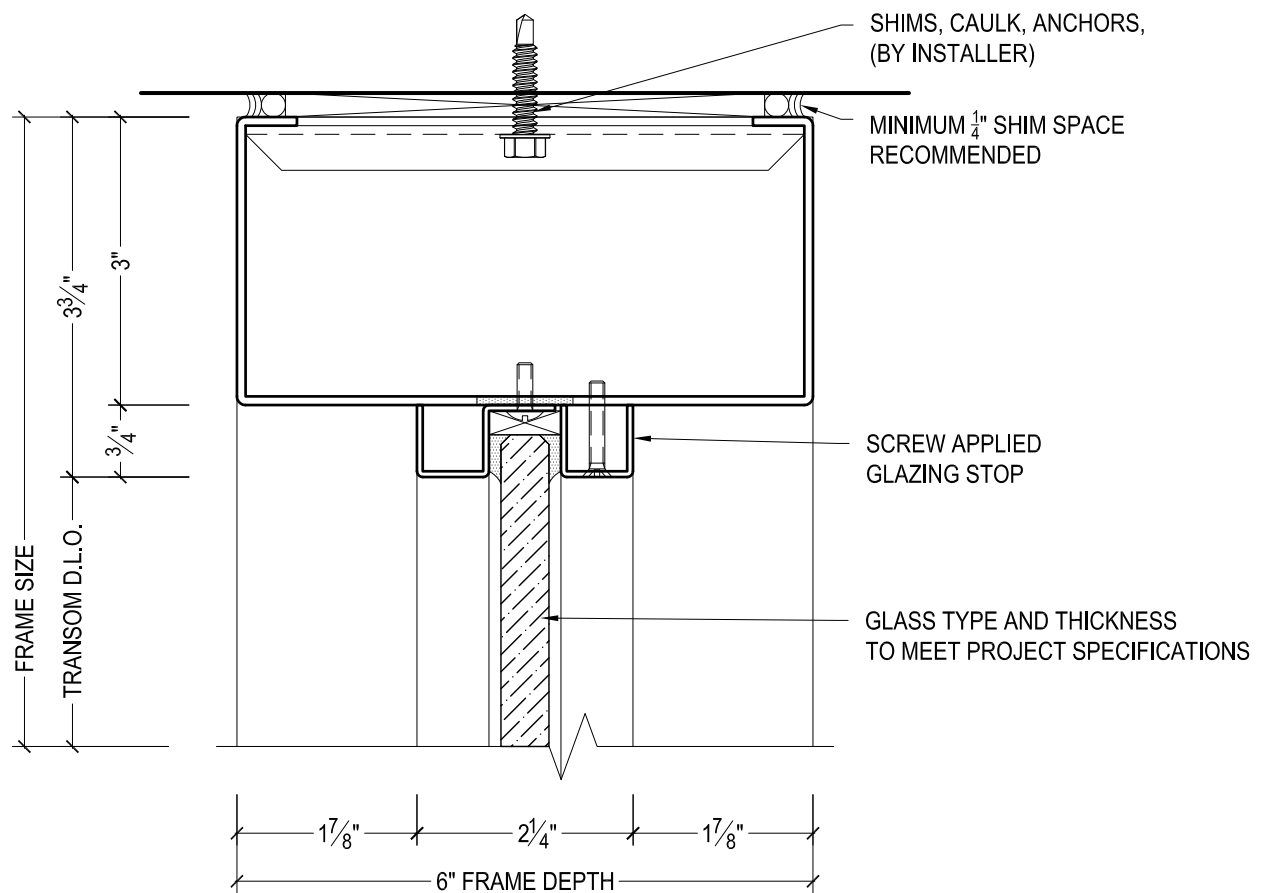




# DAWSON DOORS

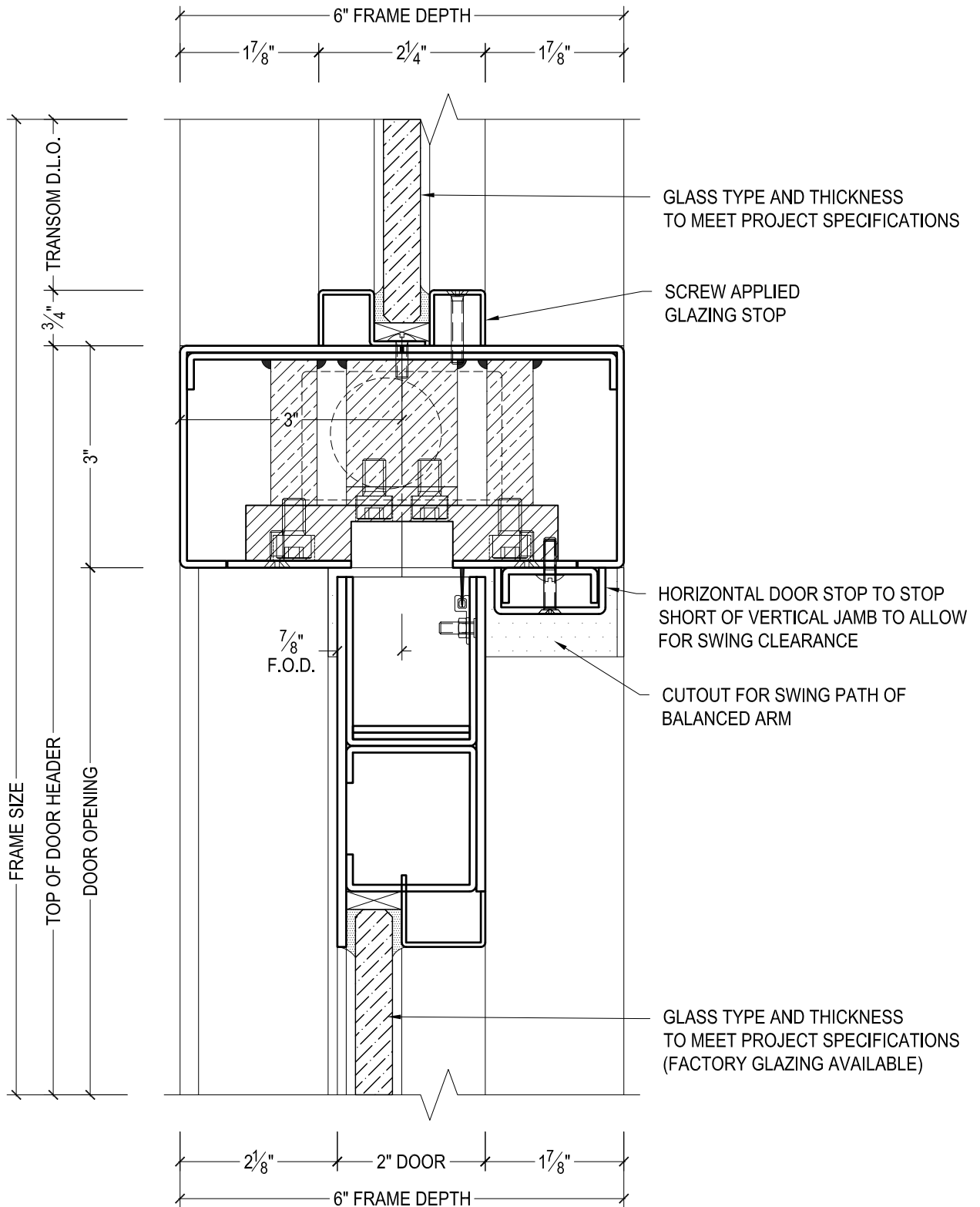
825 ALLEN ST • JAMESTOWN, NY 14701 • (716) 664-3811 • WWW.DAWSONDOORS.COM

DRAWN BY:	AG	DRAWING DATE:	12/2/19
SERIES #:	001-BAL	DRAWING #:	1BEPSFS50
DESCRIPTION:	PIVOT STILE - RUGGED SERIES BALANCED DOORS WITH EXPOSED HINGE TUBE		



825 ALLEN ST • JAMESTOWN, NY 14701 • (716) 664-3811 • WWW.DAWSONDOORS.COM

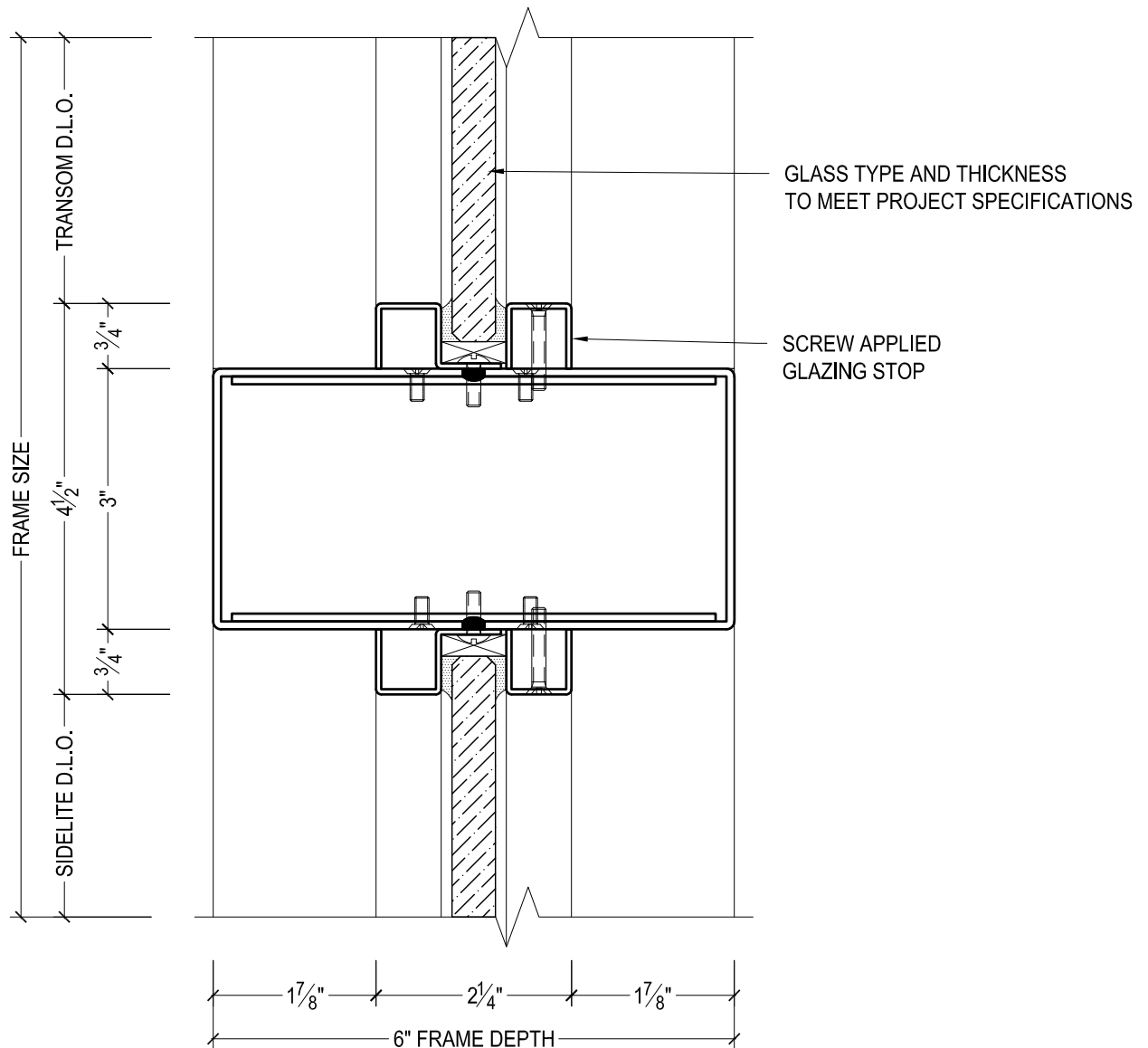
DRAWN BY:	AG	DRAWING DATE:	12/2/19
SERIES #:	001-BAL	DRAWING #:	FXXTHAS50
DESCRIPTION:	TRANSOM HEADER WITH APPLIED STOPS		



# DAWSON DOORS

825 ALLEN ST • JAMESTOWN, NY 14701 • (716) 664-3811 • WWW.DAWSONDOORS.COM

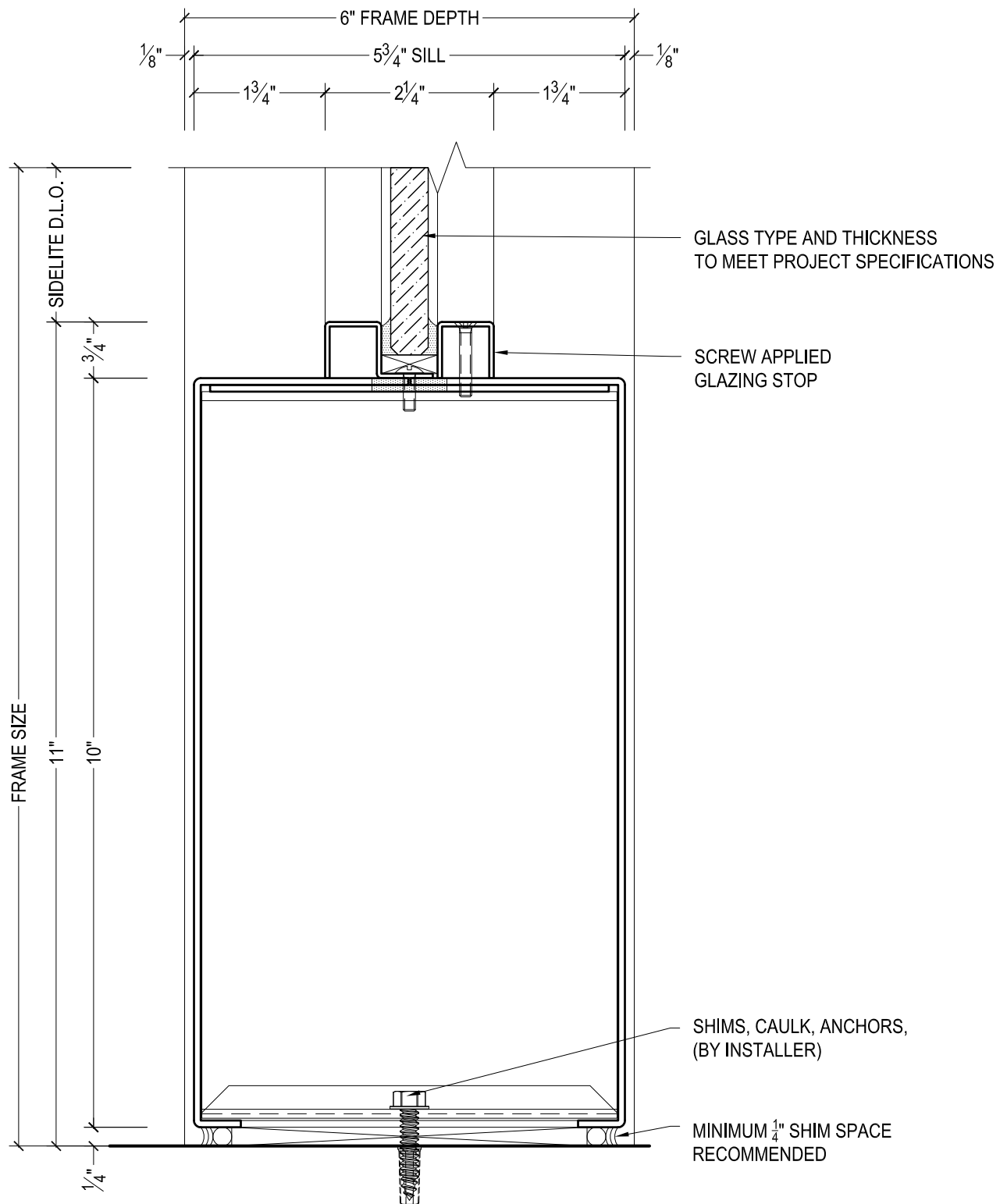
DRAWN BY:	AG	DRAWING DATE:	12/2/19
SERIES #:	001-BAL	DRAWING #:	1BFTHFS50
DESCRIPTION:	HEADER / TOP RAIL - RUGGED SERIES BALANCED DOORS WITH TRANSOM ABOVE WITH APPLIED STOPS		



# DAWSON DOORS

825 ALLEN ST • JAMESTOWN, NY 14701 • (716) 664-3811 • WWW.DAWSONDOORS.COM

DRAWN BY:	AG	DRAWING DATE:	12/2/19
SERIES #:	001-BAL	DRAWING #:	FXXTZAS50
DESCRIPTION:	SIDELITE BELOW & TRANSOM ABOVE WITH APPLIED STOPS		



**DAWSON DOORS**

825 ALLEN ST • JAMESTOWN, NY 14701 • (716) 664-3811 • WWW.DAWSONDOORS.COM

DRAWN BY:

AG

DRAWING DATE:

12/2/19

SERIES #:

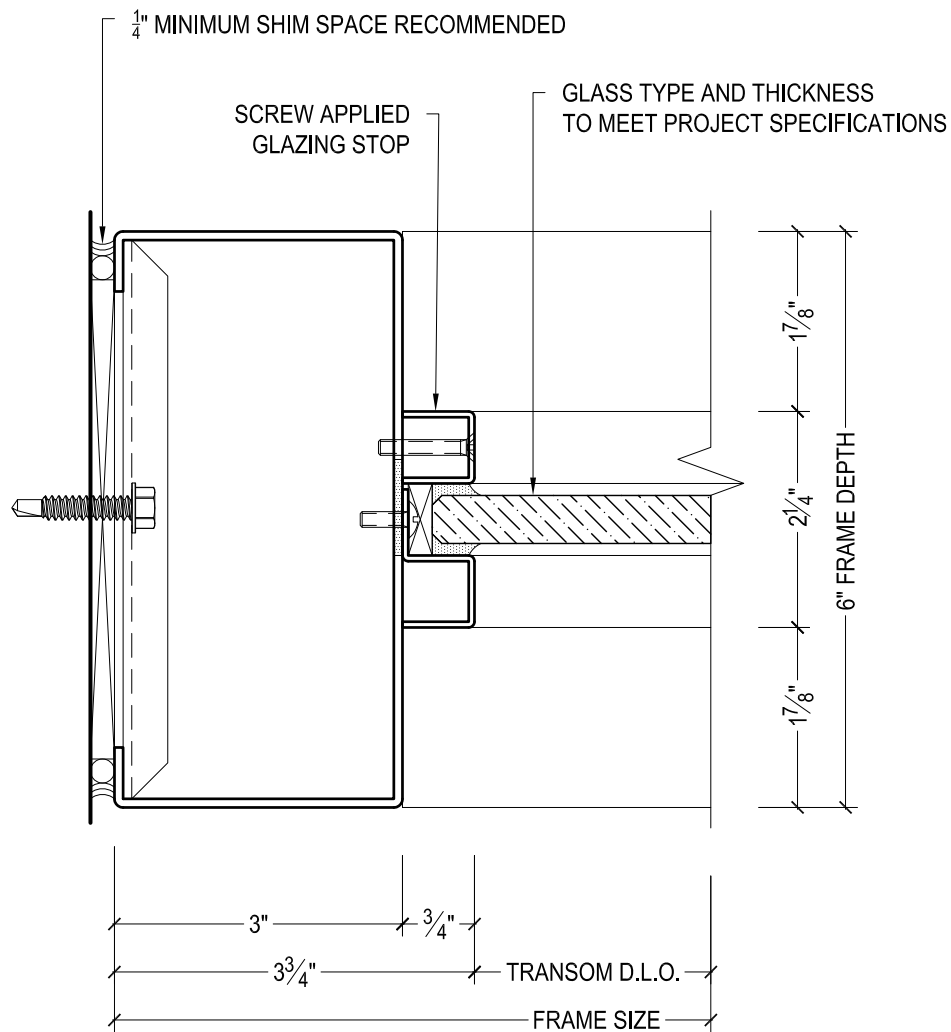
001-BAL

DRAWING #:

FXXSSAS50

DESCRIPTION:

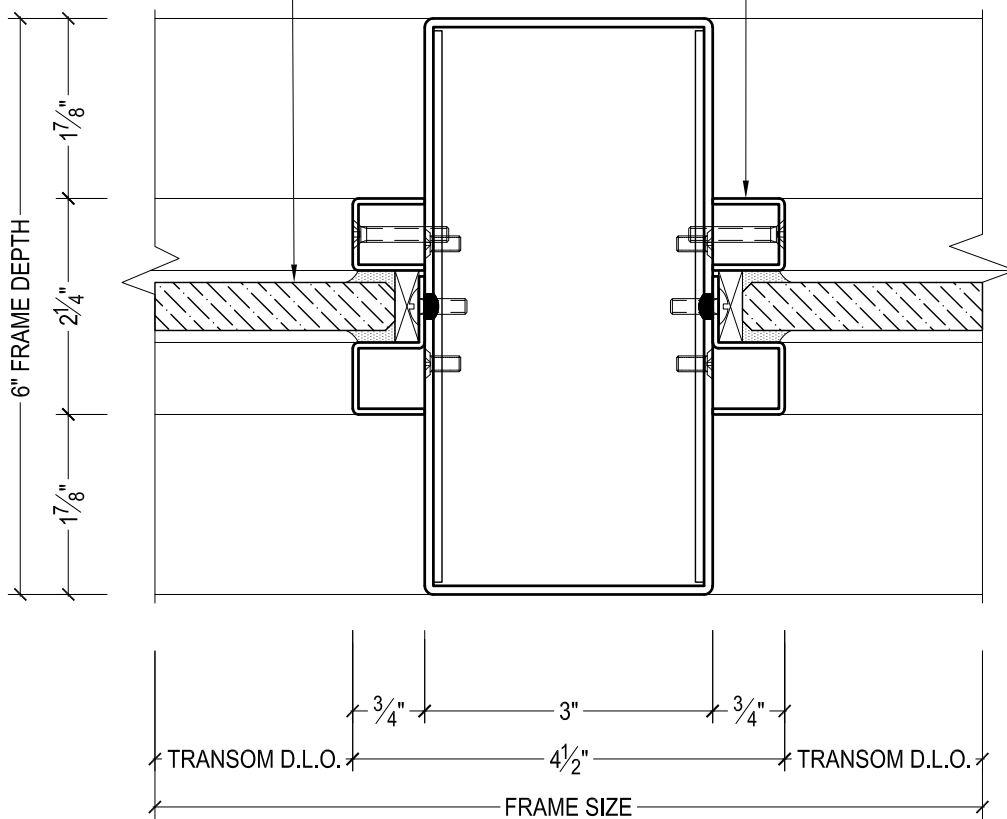
SIDELITE SILL WITH APPLIED STOPS



DRAWN BY:	AG	DRAWING DATE:	12/2/19
SERIES #:	001-BAL	DRAWING #:	FXXTWAS50
DESCRIPTION:	TRANSOM JAMB WITH APPLIED STOPS		

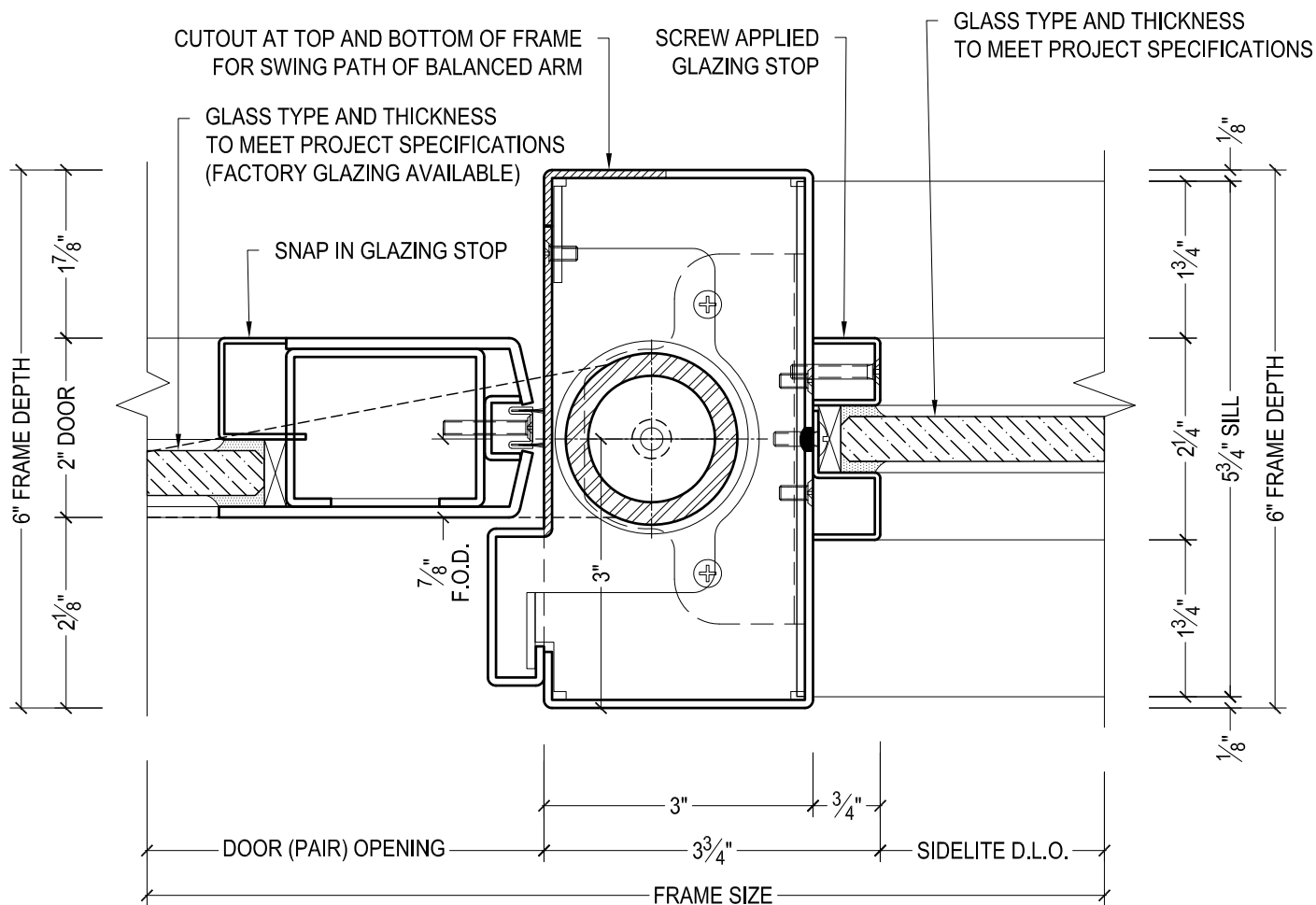
GLASS TYPE AND THICKNESS  
TO MEET PROJECT SPECIFICATIONS

SCREW APPLIED  
GLAZING STOP



825 ALLEN ST • JAMESTOWN, NY 14701 • (716) 664-3811 • WWW.DAWSONDOORS.COM

DRAWN BY:	AG	DRAWING DATE:	12/2/19
SERIES #:	001-BAL	DRAWING #:	FXXTVAS50
DESCRIPTION:	TRANSOM MULLION WITH APPLIED STOPS		



# DAWSON DOORS

825 ALLEN ST • JAMESTOWN, NY 14701 • (716) 664-3811 • WWW.DAWSONDOORS.COM

DRAWN BY:	AG	DRAWING DATE:	12/2/19
SERIES #:	001-BAL	DRAWING #:	1BFSMAS50
DESCRIPTION:	PIVOT STILE / JAMB / SIDELITE MULLION - RUGGED SERIES BALANCED DOORS WITH FIXED FLAT GLAZING. JAMB TREATED AS SIDELITE MULLION		