

1. MATERIALS & FINISHES

- A. STAINLESS STEEL, BRASS, AND BRONZE ARE AVAILABLE IN #8 MIRROR, #6 SATIN, #4 SATIN, OR NON-DIRECTIONAL (ANGEL HAIR) FINISH. DAWSON DOES NOT PROVIDE LACQUERED FINISH ON BRASS OR BRONZE PRODUCTS. WET PAINTED OR POWDER COATED DOORS WILL BE FABRICATED FROM GALVANNEALED STEEL. CONSULT FACTORY FOR CUSTOM FINISHES.
- B. STAINLESS STEEL AND PAINTED GALVANNEALED STEEL RUGGED SERIES DOORS TO BE FABRICATED WITH 11 GA DOOR PANS AND 14 GA INTERNAL COMPONENTS. GLASS STOPS TO BE FABRICATED FROM 14 GA MATERIAL.
- C. BRASS AND BRONZE RUGGED SERIES DOORS TO BE FABRICATED WITH .120" DOOR PANS AND .090" INTERNAL COMPONENTS. GLASS STOPS TO BE FABRICATED FROM .060" MATERIAL.
- D. STAINLESS STEEL AND PAINTED GALVANNEALED STEEL FRAMES AND DOOR STOPS TO BE FABRICATED FROM 13 GA MATERIAL. TRANSOM AND SIDELITE GLASS STOPS TO BE FABRICATED FROM 16 GA MATERIAL.
- E. BRASS AND BRONZE FRAMES AND DOOR STOPS TO BE FABRICATED FROM .090" MATERIAL. TRANSOM AND SIDELITE GLASS STOPS TO BE FABRICATED FROM .060" MATERIAL.

2. STANDARD DIMENSIONS

- A. DOORS HAVE A MINIMUM TOP RAIL OF 4". STILE AND RAIL DOORS HAVE A MINIMUM STILE WIDTH OF $2\frac{3}{4}$ ". ALL DOORS HAVE A STANDARD BOTTOM RAIL DIMENSION OF 10" TO MEET ADA CODE. MINIMUM BOTTOM RAIL OF 6" WILL NOT MEET ADA. MINIMUM DIMENSIONS SUBJECT TO CHANGE BASED ON HARDWARE - CONSULT FACTORY.
- B. FRAME PROFILES HAVE A MINIMUM SIZE OF 1" FACE x $4\frac{3}{4}$ " DEPTH. MINIMUM DIMENSIONS SUBJECT TO CHANGE BASED ON HARDWARE AND ASPECT RATIO OF FRAME. CONSULT FACTORY FOR CUSTOM SIZES.
- C. SEE GLAZING DETAILS FOR STANDARD GLASS POCKET AND STANDARD GLASS BITE. CONSULT FACTORY FOR CUSTOM GLASS POCKET OR CUSTOM GLASS BITE.
- E. DOOR STOPS FABRICATED $\frac{5}{8}$ " HIGH STANDARD, VARYING WITH HARDWARE REQUIREMENTS. WIDTH VARIES AS REQUIRED. CONSULT FACTORY FOR CUSTOM SIZES AND PROFILES.
- F. MINIMUM BUTT HUNG PIVOTED DOOR WIDTH TO MEET ADA MINIMUM OF 32" CLEAR OPENING IS $35\frac{1}{4}$ ". MINIMUM SIZE OF DOOR SUBJECT TO CHANGE BASED ON HARDWARE REQUIREMENTS.

3. HARDWARE

- A. DETERMINING NUMBER OF HINGES REQUIRED. ONE HINGE FOR EVERY 30" OF DOOR HEIGHT.

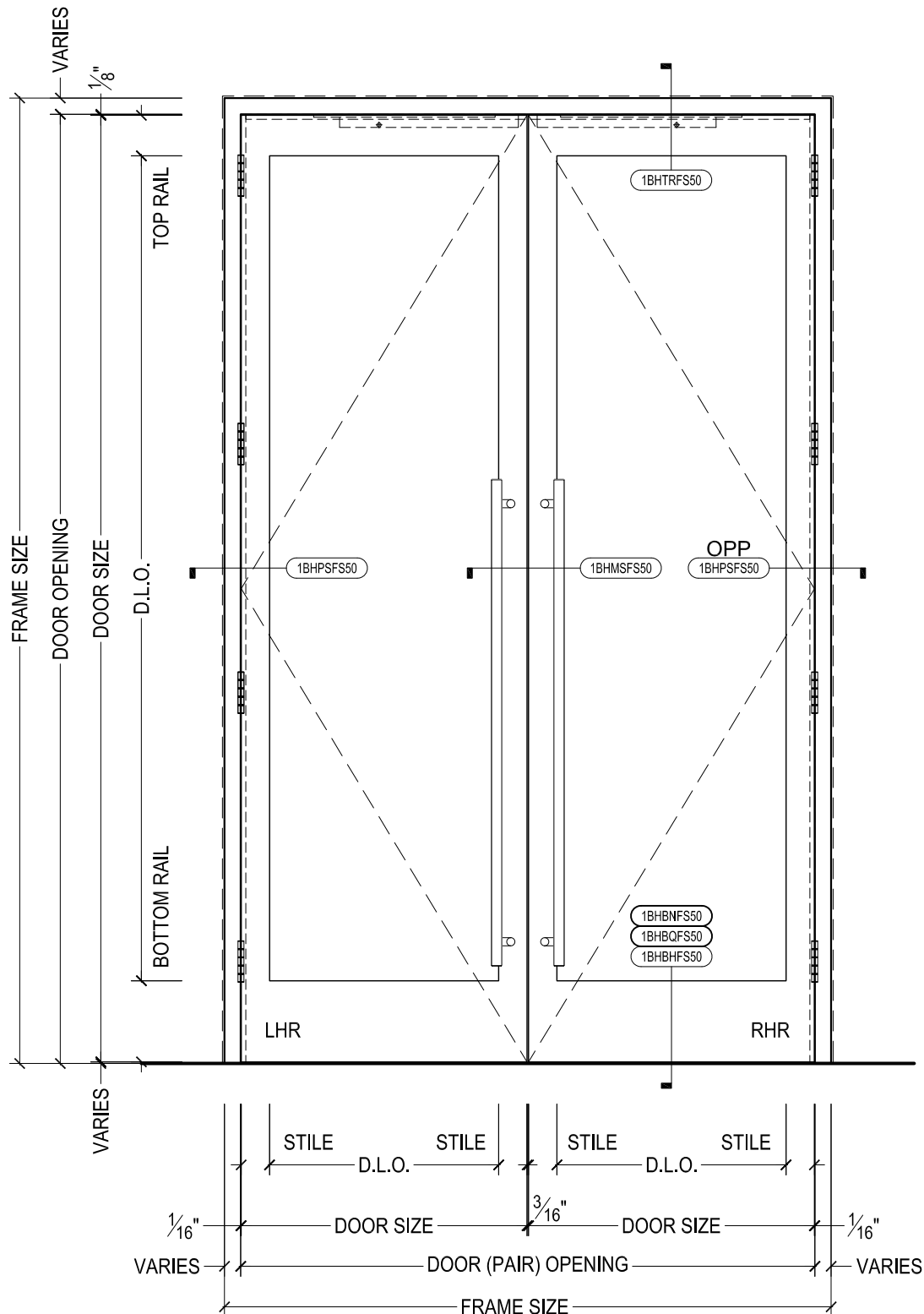
DOOR HEIGHT	NUMBER OF HINGES
UP TO AND NOT OVER 90"	4 HINGES
OVER 90" AND IF OVER 120"	5 HINGES

- B. DISTANCE FROM EDGE OF LEAF TO SWAGE LINE TO BE DETERMINED BY MANUFACTURER TEMPLATES.
- C. FULL MORTISED HINGES ARE RECOMMENDED WITH A "METAL" FRAME AND DOOR APPLICATION.
- D. ST. STL. CONTINUOUS HINGE RATED UP TO 1000# RECOMMENDED - CONTACT FACTORY FOR INFO.



825 ALLEN ST • JAMESTOWN, NY 14701 • (716) 664-3811 • WWW.DAWSONDOORS.COM

DRAWN BY:	AG	DRAWING DATE:	11/19/19
SERIES #:	001-BH	DRAWING #:	NOTES 1
DESCRIPTION:	GENERAL NOTES FOR 001 RUGGED SERIES DOORS WITH BUTT HUNG OR CONTINUOUS PIVOTED HARDWARE		



DAWSON DOORS

825 ALLEN ST • JAMESTOWN, NY 14701 • (716) 664-3811 • WWW.DAWSONDOORS.COM

DRAWN BY:

AG

DRAWING DATE:

11/19/19

SERIES #:

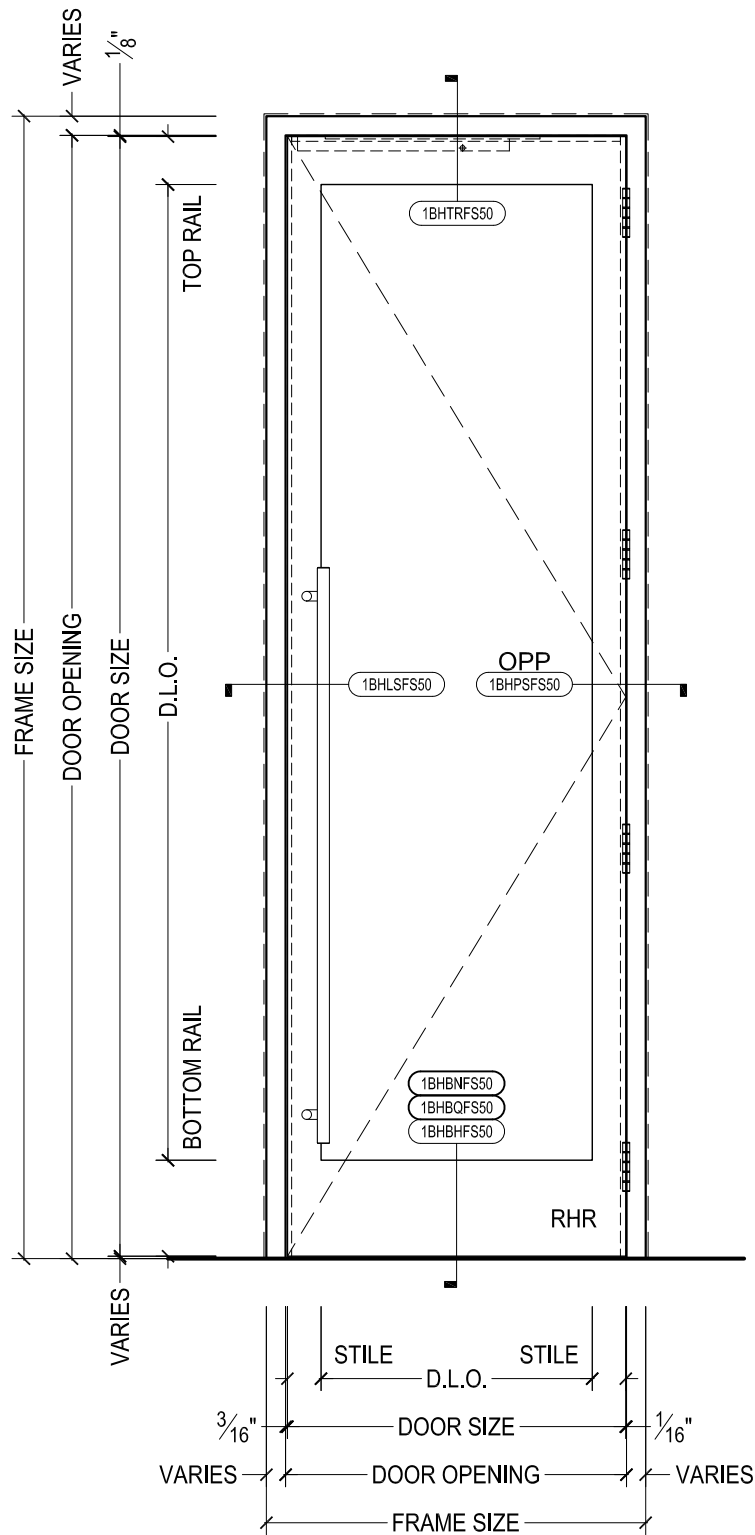
001-BH

DRAWING #:

EL-FC-PAIR

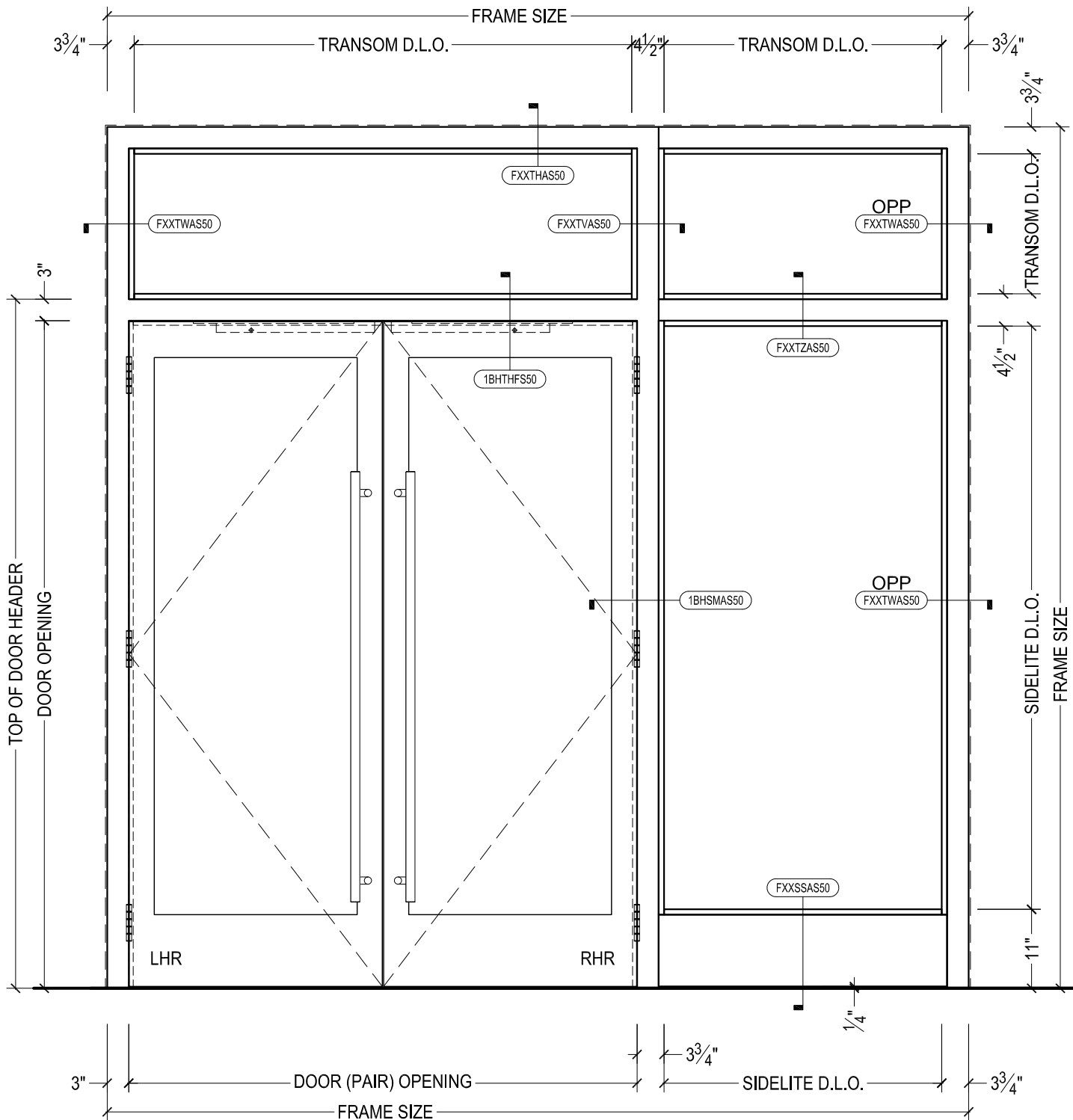
DESCRIPTION:

ELEVATION - STILE AND RAIL RUGGED SERIES BUTT HUNG
OR CONTINUOUS HINGE DOORS



825 ALLEN ST • JAMESTOWN, NY 14701 • (716) 664-3811 • WWW.DAWSONDOORS.COM

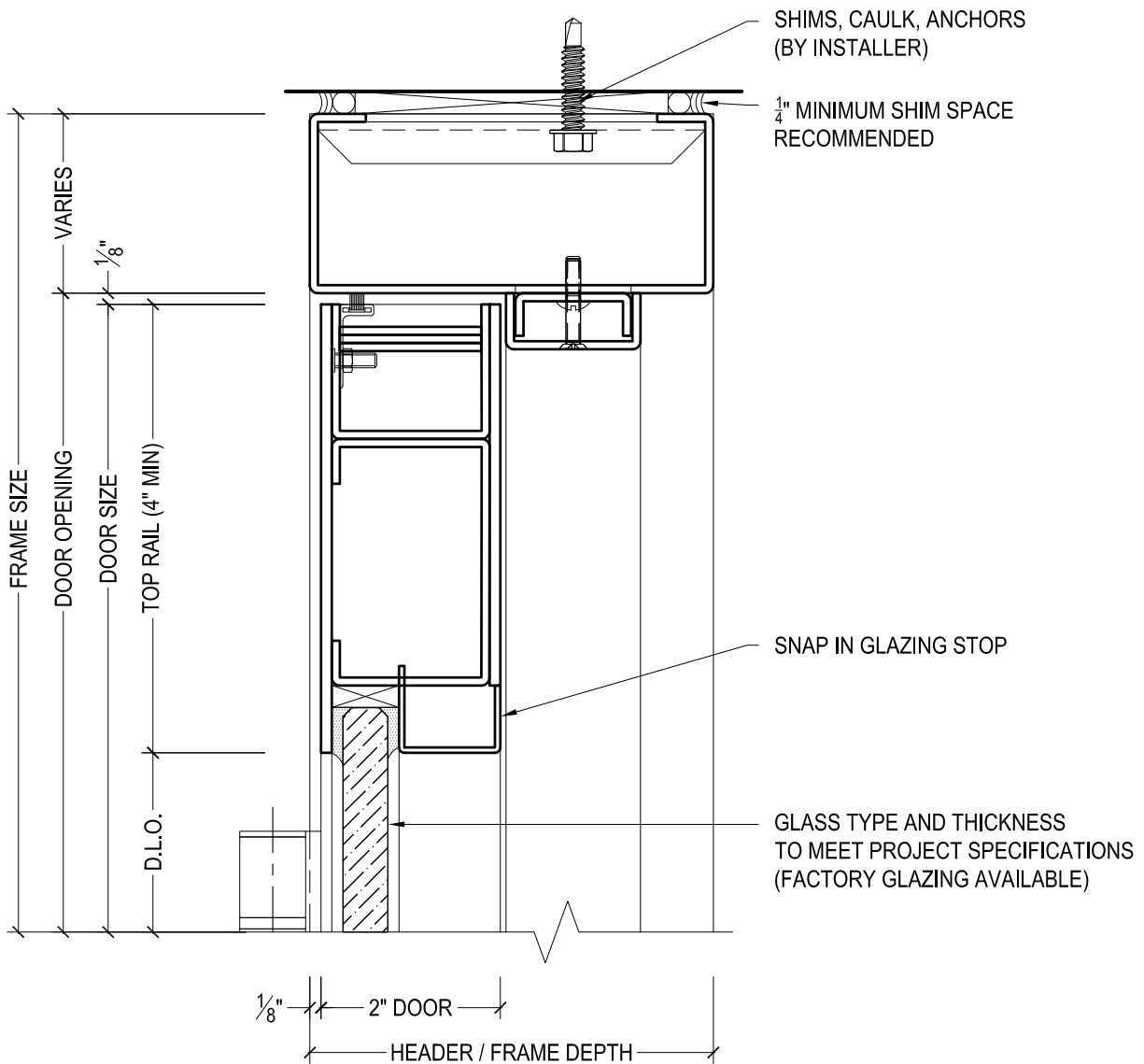
DRAWN BY:	AG	DRAWING DATE:	11/19/19
SERIES #:	001-BH	DRAWING #:	EL-SAO-SIN
DESCRIPTION:	ELEVATION - STILE AND RAIL RUGGED SERIES BUTT HUNG OR CONTINUOUS HINGE DOORS WITH SURFACE MOUNTED AUTOMATIC OPERATOR		



DAWSON DOORS

825 ALLEN ST • JAMESTOWN, NY 14701 • (716) 664-3811 • WWW.DAWSONDOORS.COM

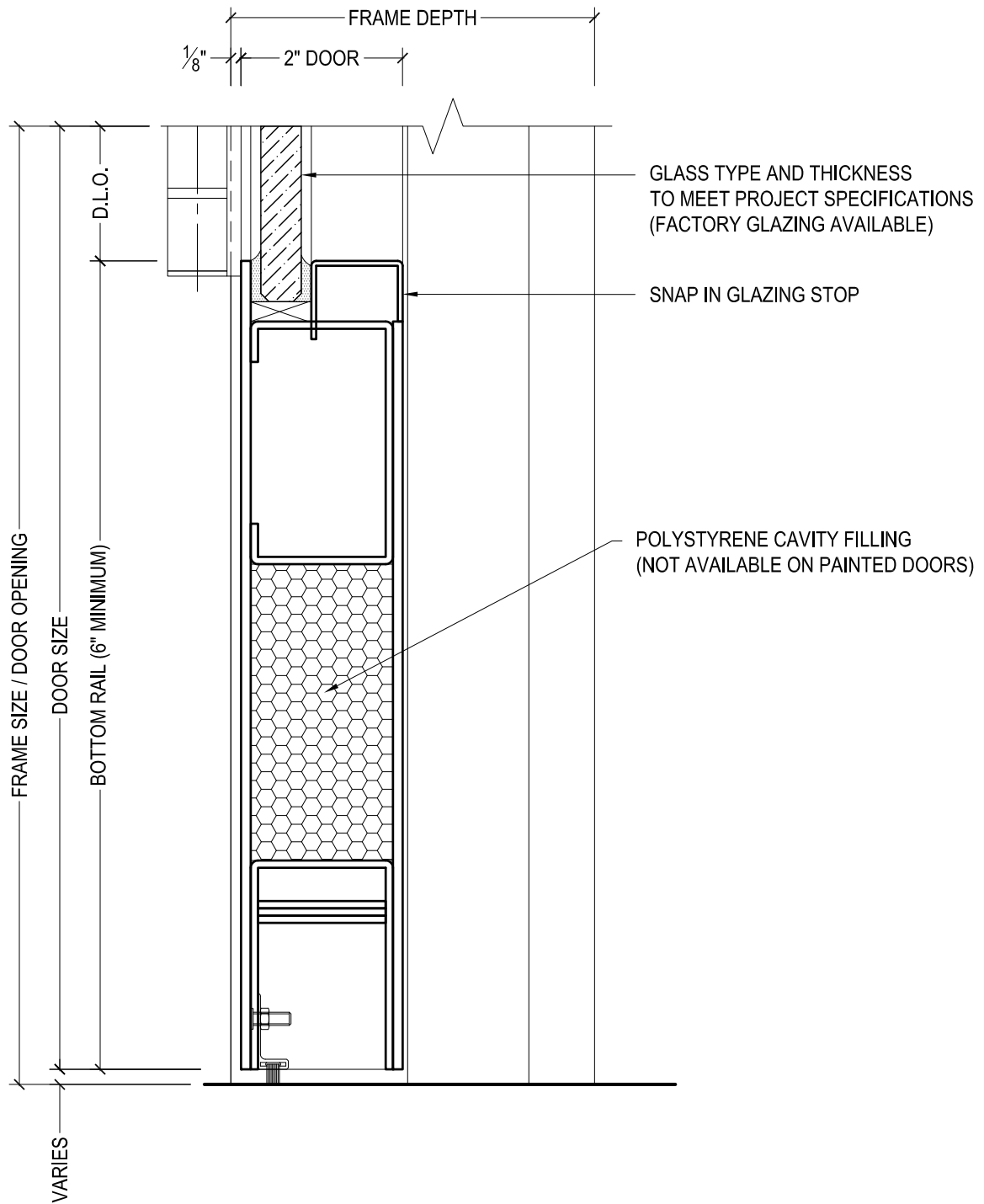
DRAWN BY:	AG	DRAWING DATE:	11/19/19
SERIES #:	001-BH	DRAWING #:	EL-BH-SLT
DESCRIPTION:	ELEVATION - STILE AND RAIL RUGGED SERIES BUTT HUNG OR CONTINUOUS HINGE DOORS WITH FRAME SIDELITE AND TRANSOM		



DAWSON DOORS

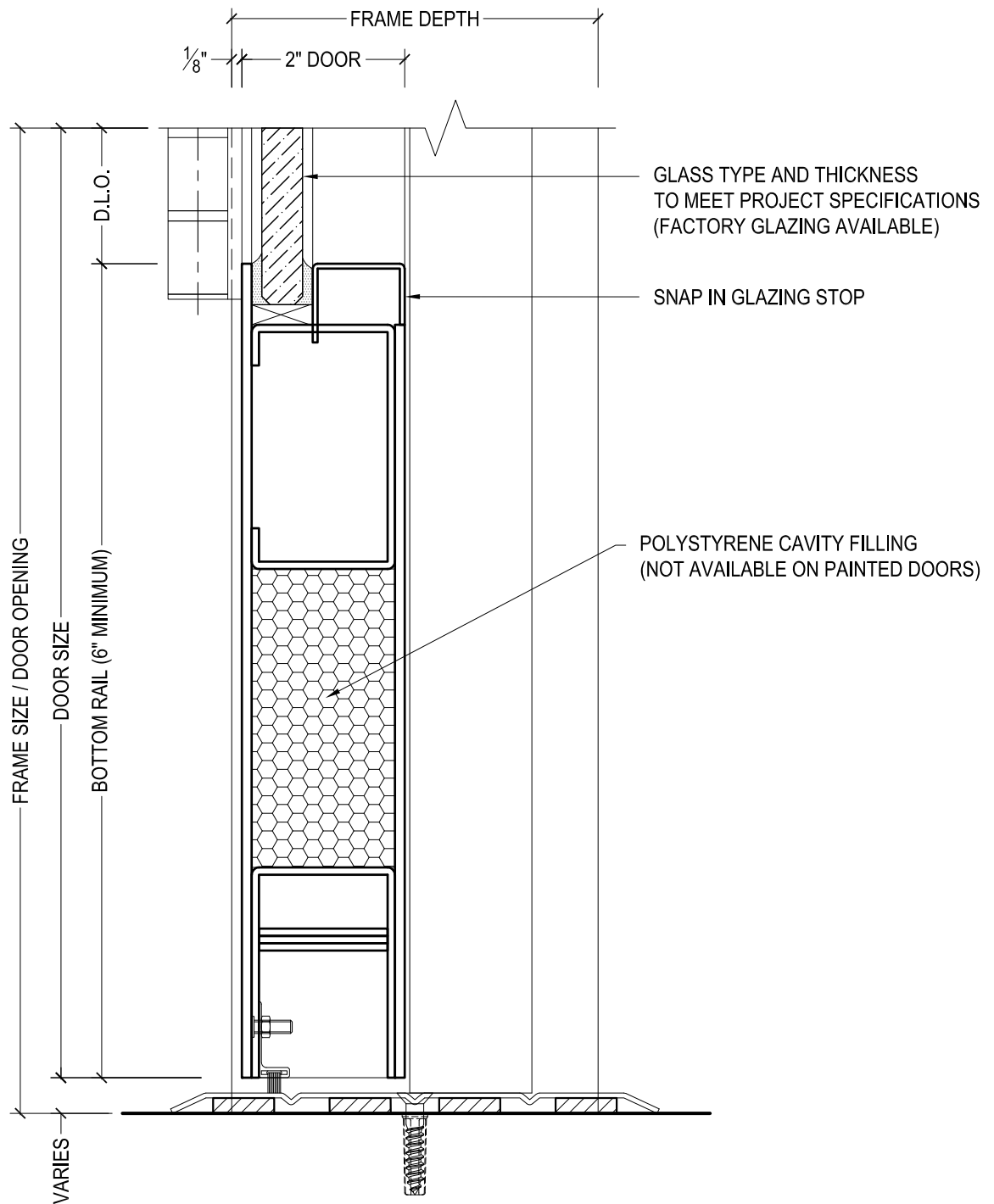
825 ALLEN ST • JAMESTOWN, NY 14701 • (716) 664-3811 • WWW.DAWSONDOORS.COM

DRAWN BY:	AG	DRAWING DATE:	11/19/19
SERIES #:	001-BH	DRAWING #:	1BHTRFS50
DESCRIPTION:	HEADER / TOP RAIL - RUGGED SERIES BUTT HUNG OR CONTINUOUS HINGE DOORS		

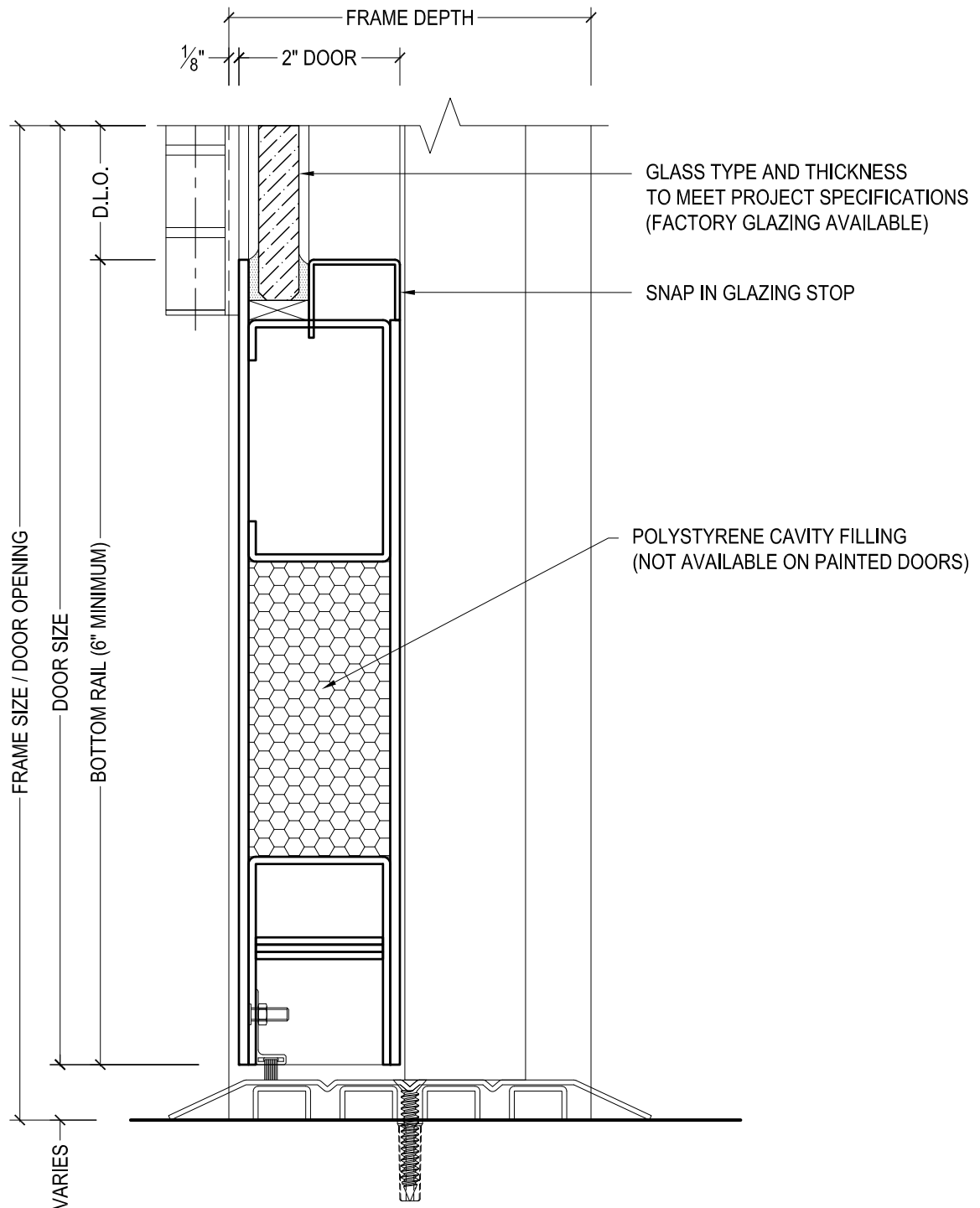


825 ALLEN ST • JAMESTOWN, NY 14701 • (716) 664-3811 • WWW.DAWSONDOORS.COM

DRAWN BY:	AG	DRAWING DATE:	11/19/19
SERIES #:	001-BH	DRAWING #:	1BHB NFS50
DESCRIPTION:	BOTTOM RAIL / FLOOR CLOSER - RUGGED SERIES BUTT HUNG OR CONTINUOUS HINGE DOORS - NO THRESHOLD -		

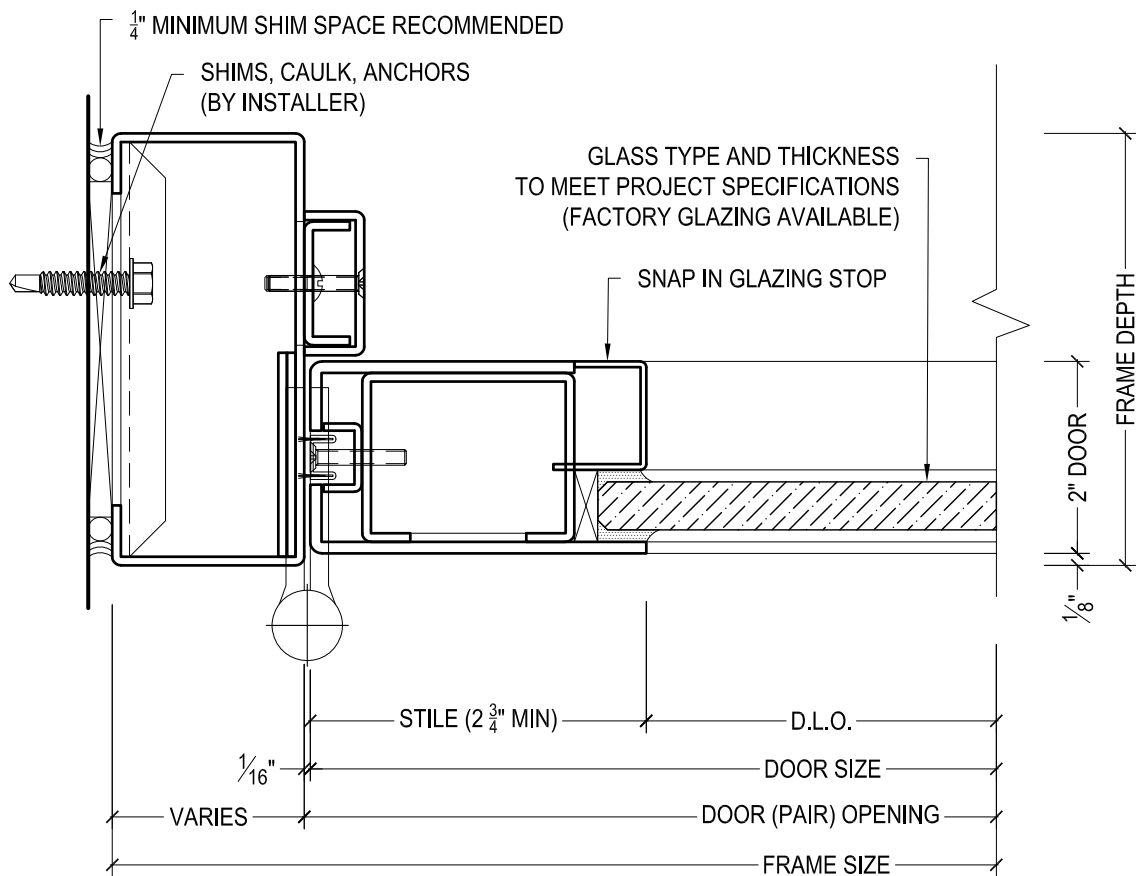


DRAWN BY:	AG	DRAWING DATE:	11/19/19
SERIES #:	001-BH	DRAWING #:	1BHBQFS50
DESCRIPTION:	BOTTOM RAIL / FLOOR CLOSER - RUGGED SERIES BUTT HUNG OR CONTINUOUS HINGE DOORS - 1/4" THRESHOLD -		



825 ALLEN ST • JAMESTOWN, NY 14701 • (716) 664-3811 • WWW.DAWSONDOORS.COM

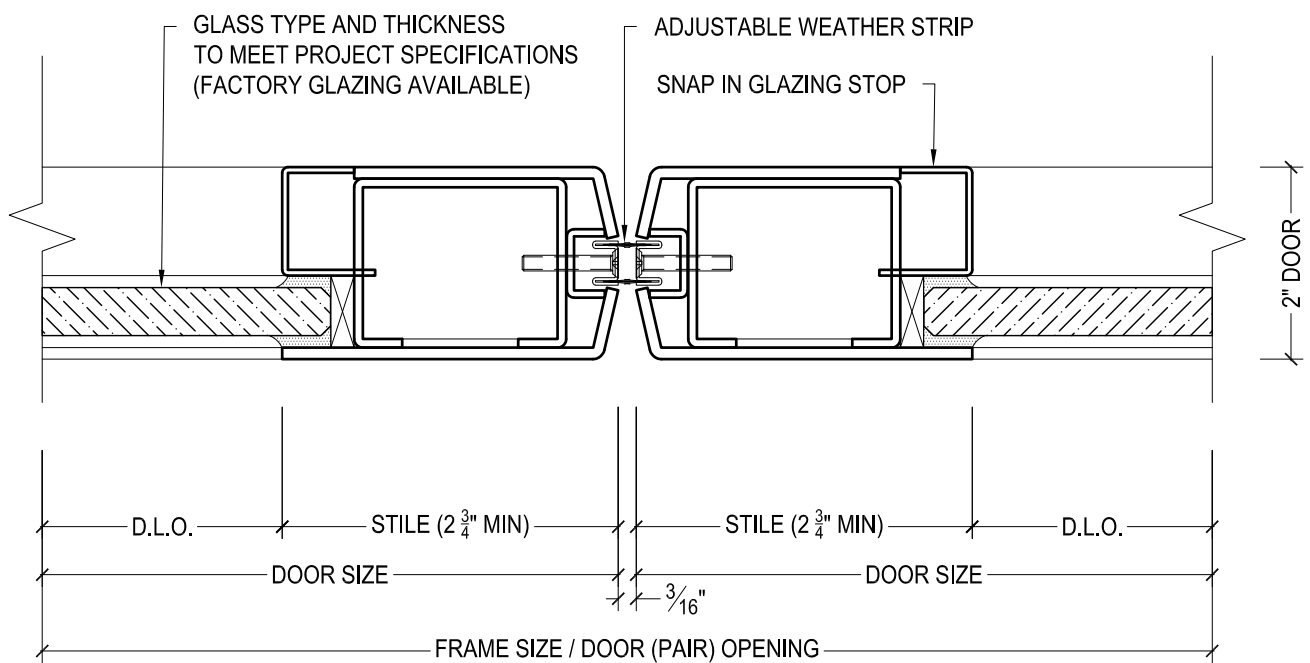
DRAWN BY:	AG	DRAWING DATE:	11/19/19
SERIES #:	001-BH	DRAWING #:	1BHBHFS50
DESCRIPTION:	BOTTOM RAIL / FLOOR CLOSER - RUGGED SERIES BUTT HUNG OR CONTINUOUS HINGE DOORS - 1/2" THRESHOLD -		



DAWSON DOORS

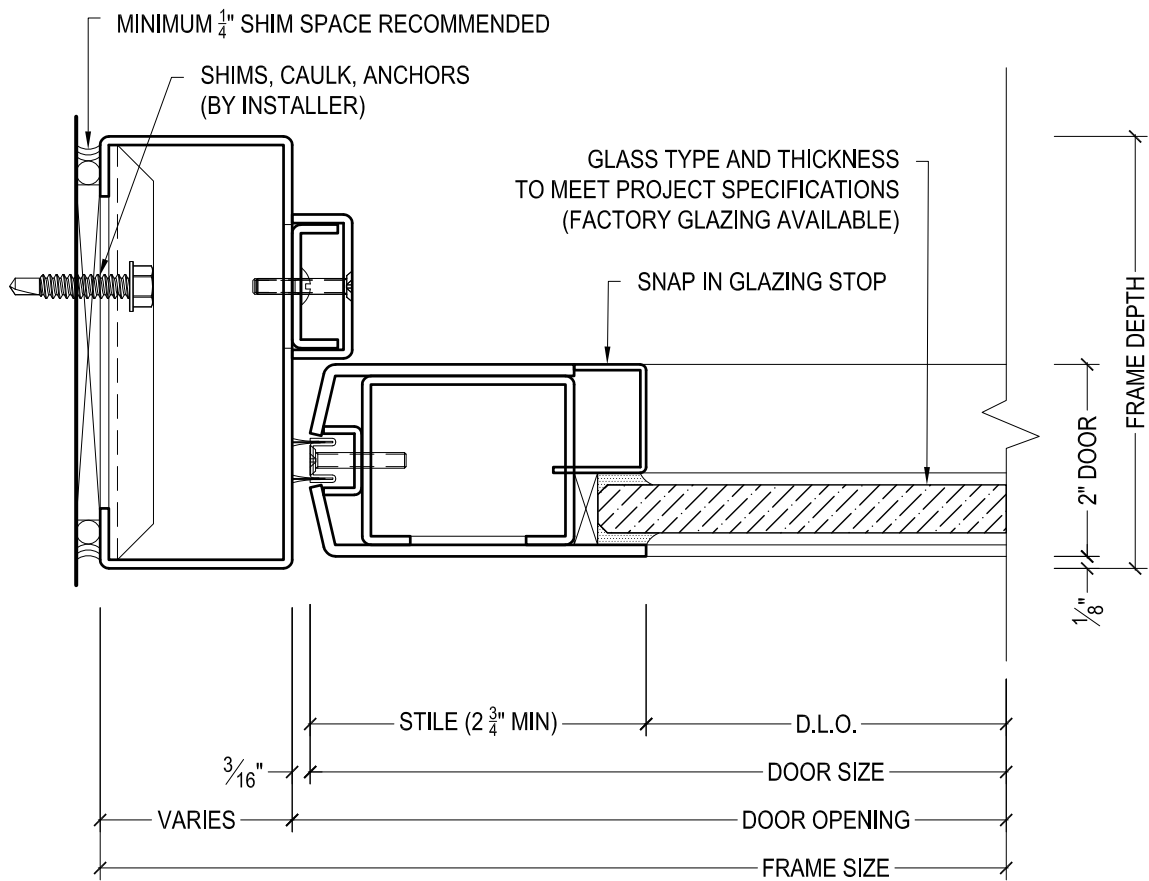
825 ALLEN ST • JAMESTOWN, NY 14701 • (716) 664-3811 • WWW.DAWSONDOORS.COM

DRAWN BY:	AG	DRAWING DATE:	11/19/19
SERIES #:	001-BH	DRAWING #:	1BHPSFS50
DESCRIPTION:	JAMB / PIVOT STILE - RUGGED SERIES BUTT HUNG OR CONTINUOUS HINGE DOORS		



825 ALLEN ST • JAMESTOWN, NY 14701 • (716) 664-3811 • WWW.DAWSONDOORS.COM

DRAWN BY:	AG	DRAWING DATE:	11/19/19
SERIES #:	001-BH	DRAWING #:	1BHMSFS50
DESCRIPTION:	MEETING STILES - RUGGED SERIES BUTT HUNG OR CONTINUOUS HINGE DOORS		



DAWSON DOORS

825 ALLEN ST • JAMESTOWN, NY 14701 • (716) 664-3811 • WWW.DAWSONDOORS.COM

DRAWN BY:

AG

DRAWING DATE:

11/19/19

SERIES #:

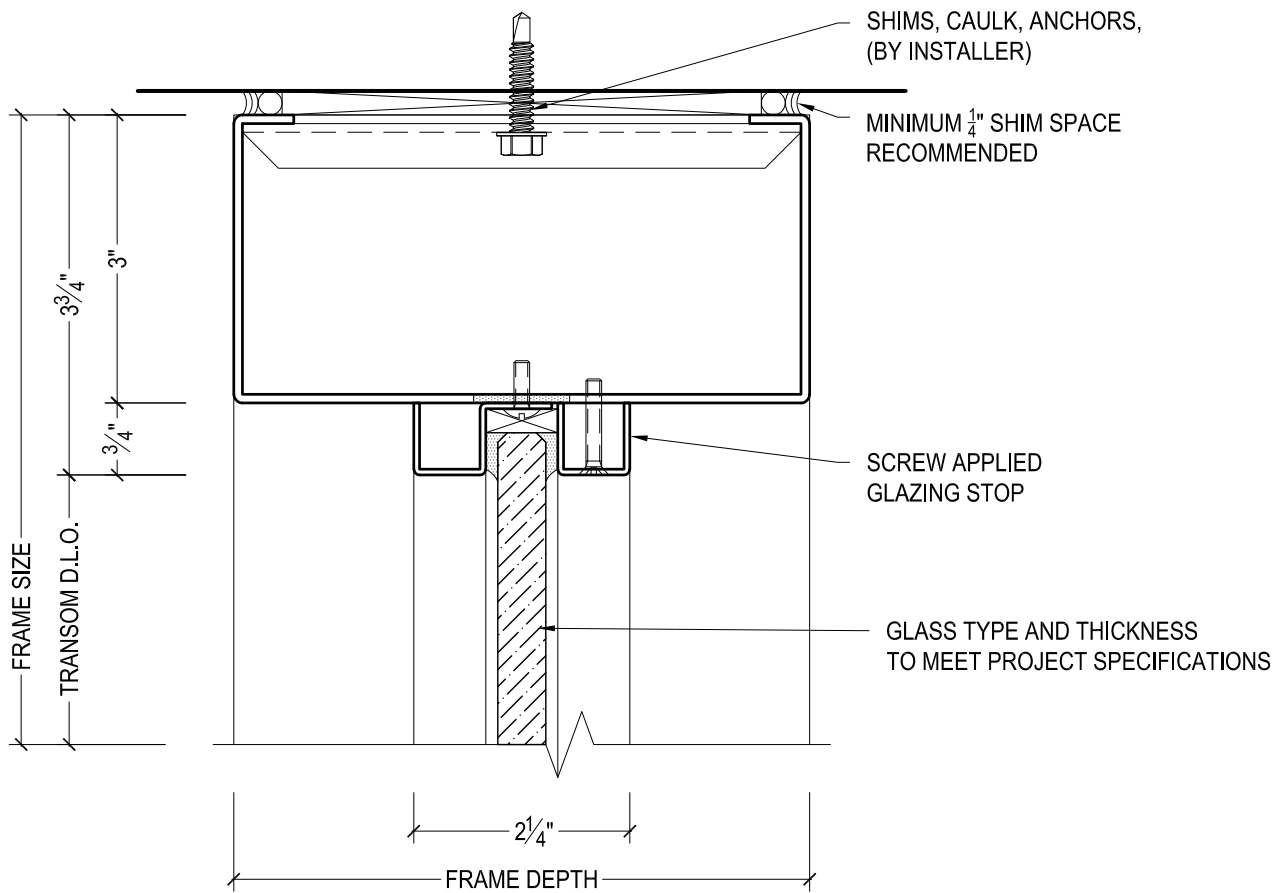
001-BH

DRAWING #:

1BHLSFS50

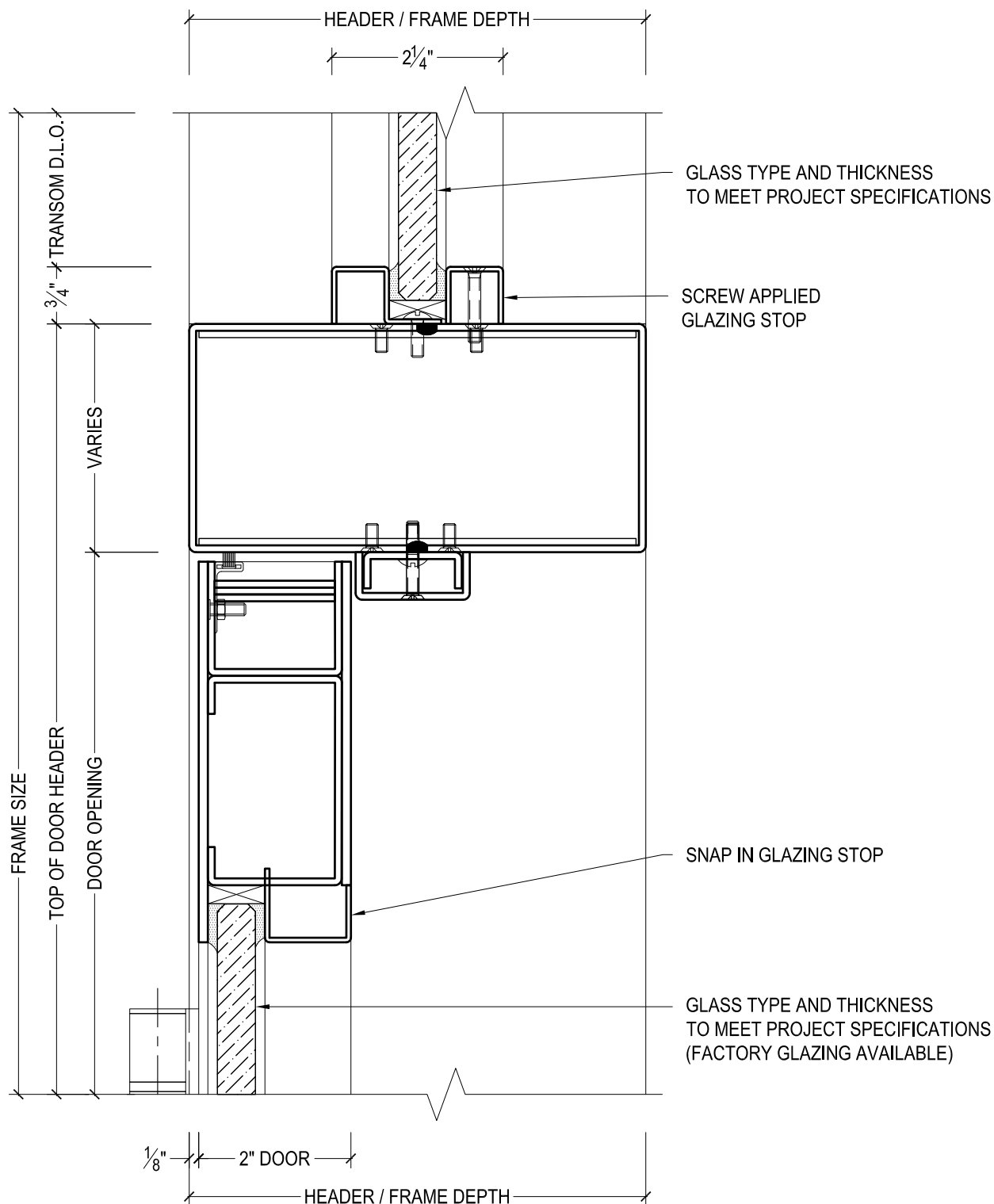
DESCRIPTION:

LOCK JAMB / STILE - RUGGED SERIES BUTT HUNG OR
CONTINUOUS HINGE DOORS



825 ALLEN ST • JAMESTOWN, NY 14701 • (716) 664-3811 • WWW.DAWSONDOORS.COM

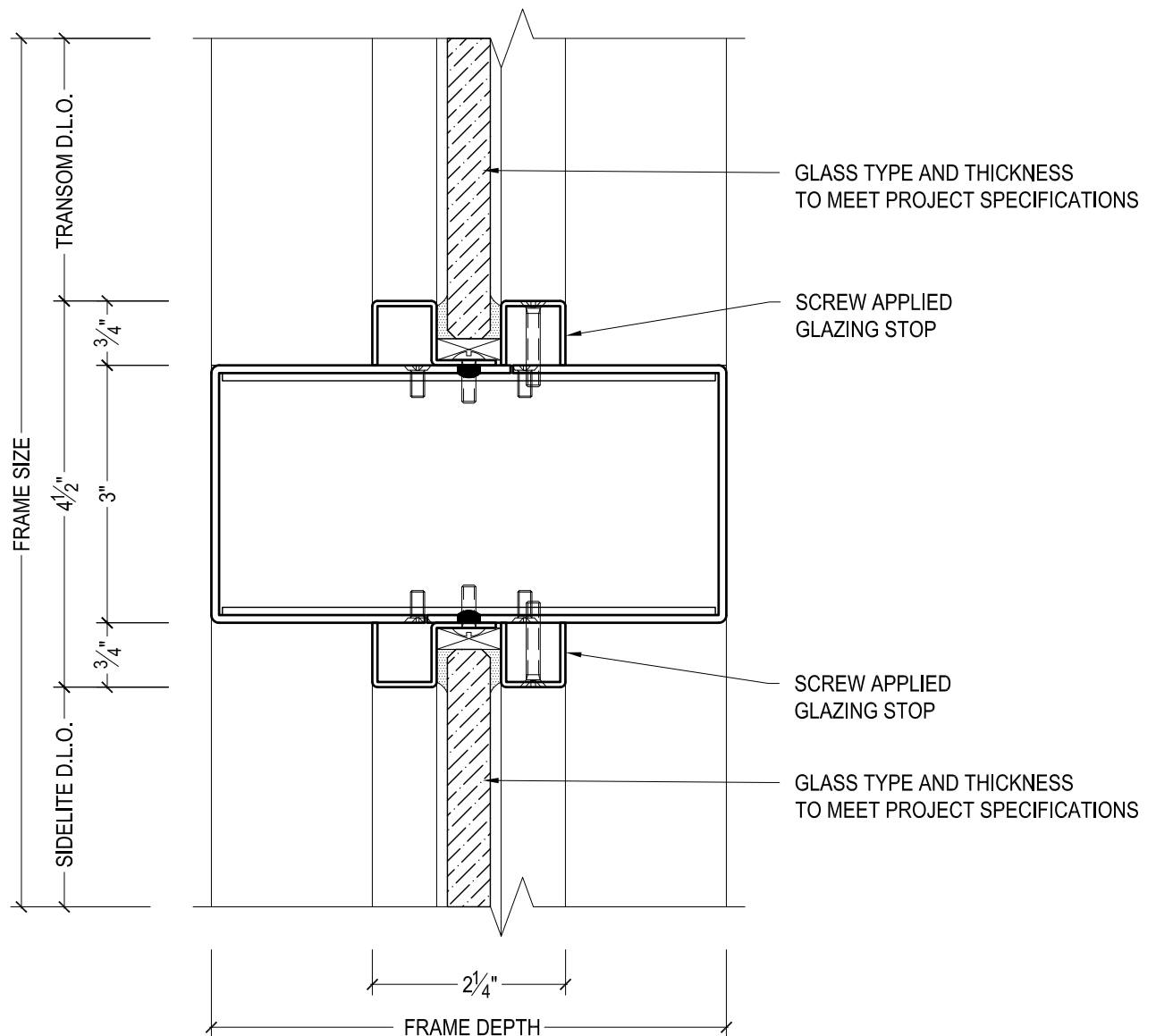
DRAWN BY:	AG	DRAWING DATE:	11/19/19
SERIES #:	001-BH	DRAWING #:	FXXTHAS50
DESCRIPTION:	TRANSOM HEADER WITH APPLIED STOPS		



DAWSON DOORS

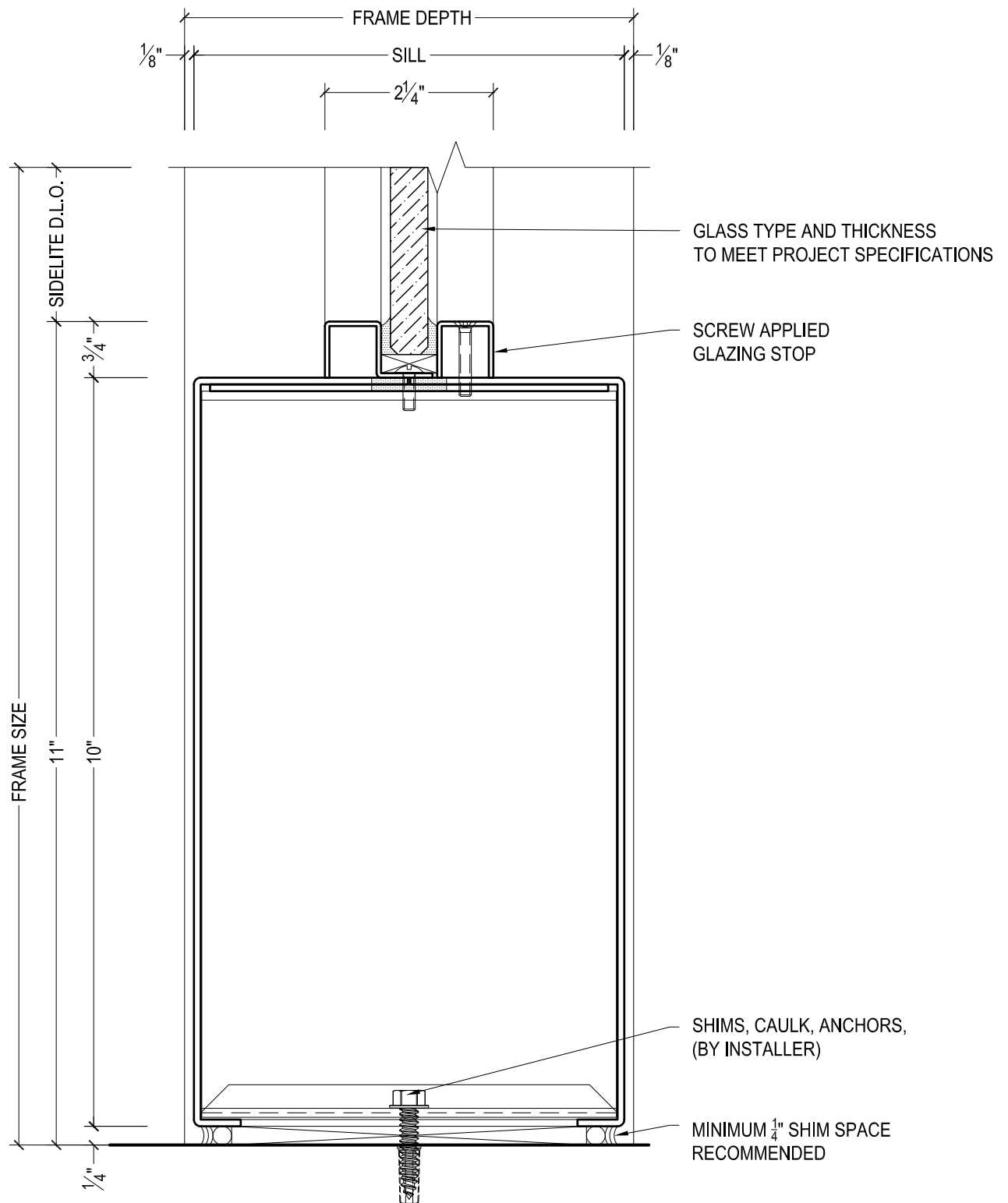
825 ALLEN ST • JAMESTOWN, NY 14701 • (716) 664-3811 • WWW.DAWSONDOORS.COM

DRAWN BY:	AG	DRAWING DATE:	11/19/19
SERIES #:	001-BH	DRAWING #:	1BHTHFS50
DESCRIPTION:	HEADER / TOP RAIL - RUGGED SERIES BUTT HUNG OR CONTINUOUS HINGE DOORS WITH TRANSOM ABOVE WITH APPLIED STOPS		

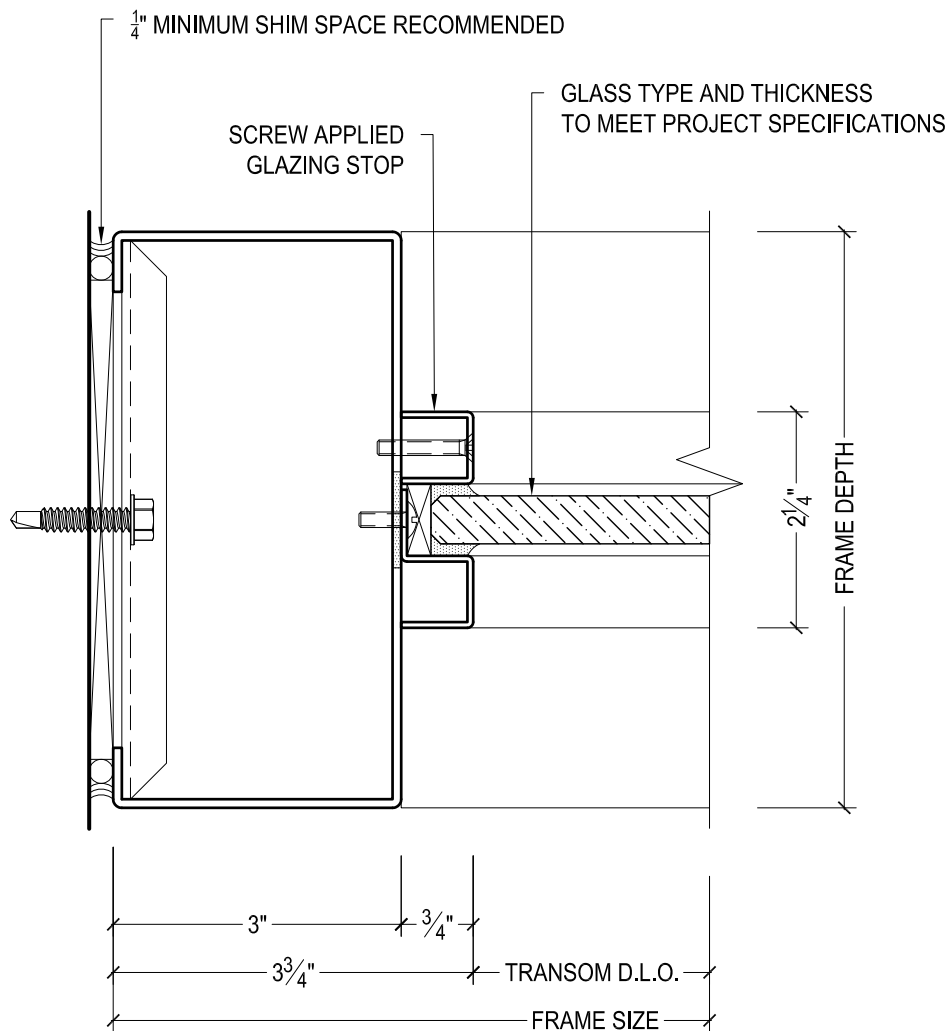


825 ALLEN ST • JAMESTOWN, NY 14701 • (716) 664-3811 • WWW.DAWSONDOORS.COM

DRAWN BY:	AG	DRAWING DATE:	11/19/19
SERIES #:	001-BH	DRAWING #:	FXXTZAS50
DESCRIPTION:	SIDELITE BELOW & TRANSOM ABOVE WITH APPLIED STOPS		



DRAWN BY:	AG	DRAWING DATE:	11/19/19
SERIES #:	001-BH	DRAWING #:	FXXSSAS50
DESCRIPTION:	SIDELITE SILL WITH APPLIED STOPS		

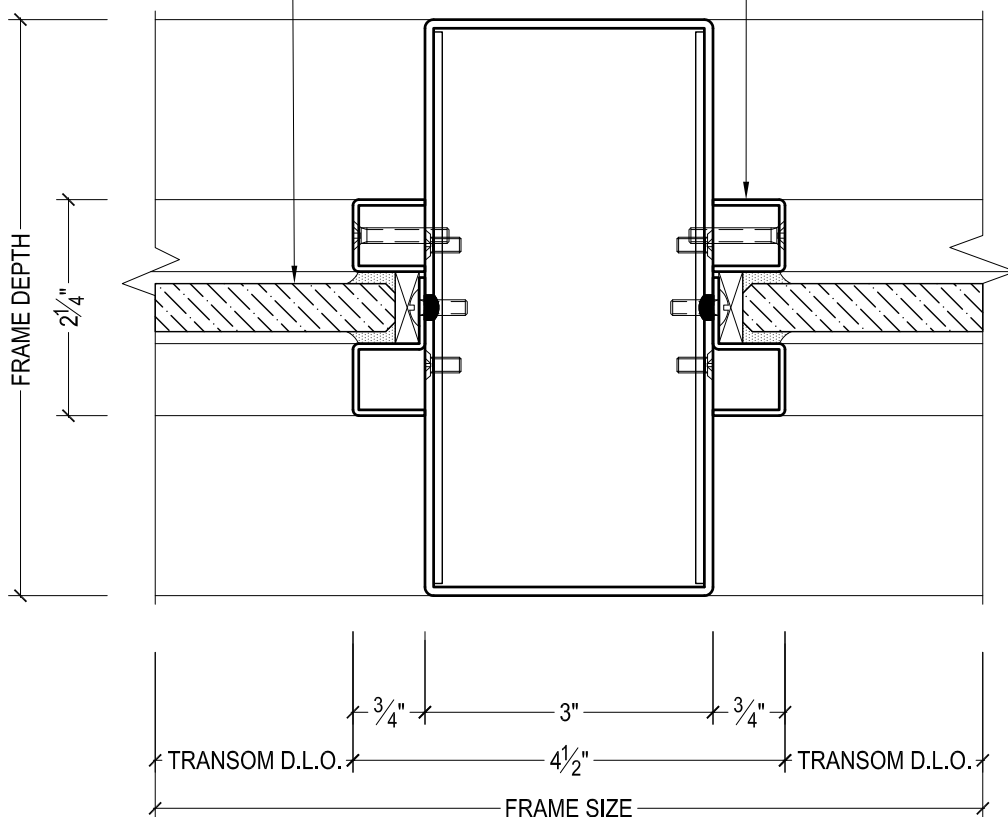


825 ALLEN ST • JAMESTOWN, NY 14701 • (716) 664-3811 • WWW.DAWSONDOORS.COM

DRAWN BY:	AG	DRAWING DATE:	11/19/19
SERIES #:	001-BH	DRAWING #:	FXXTWAS50
DESCRIPTION:	TRANSOM JAMB WITH APPLIED STOPS		

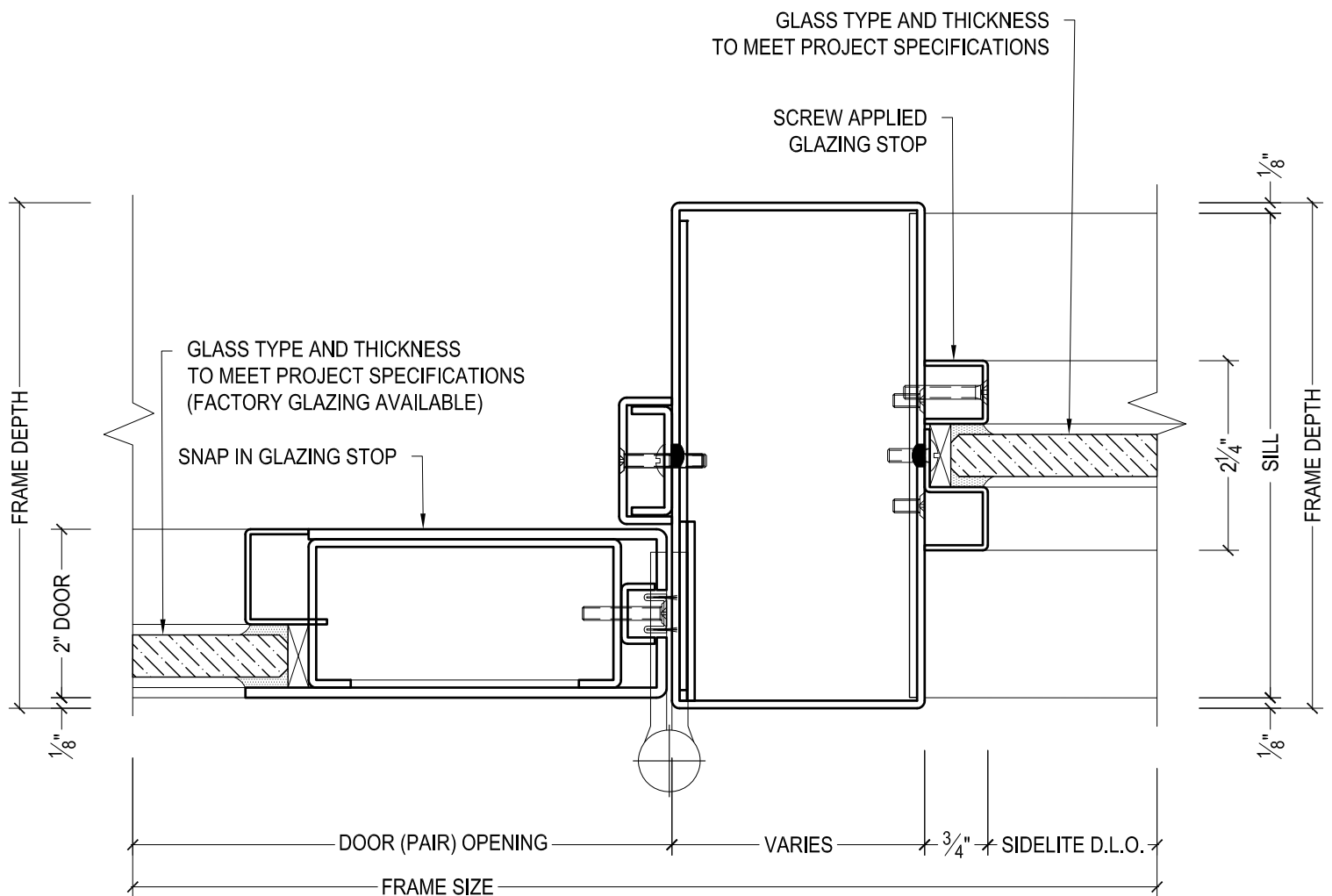
GLASS TYPE AND THICKNESS
TO MEET PROJECT SPECIFICATIONS

SCREW APPLIED
GLAZING STOP



825 ALLEN ST • JAMESTOWN, NY 14701 • (716) 664-3811 • WWW.DAWSONDOORS.COM

DRAWN BY:	AG	DRAWING DATE:	11/19/19
SERIES #:	001-BH	DRAWING #:	FXXTVAS50
DESCRIPTION:	TRANSOM MULLION WITH APPLIED STOPS		



DAWSON DOORS

825 ALLEN ST • JAMESTOWN, NY 14701 • (716) 664-3811 • WWW.DAWSONDOORS.COM

DRAWN BY:	AG	DRAWING DATE:	11/19/19
SERIES #:	001-BH	DRAWING #:	1BHSMAS50
DESCRIPTION:	JAMB / PIVOT STILE / SIDELITE MULLION - RUGGED SERIES BUTT HUNG OR CONTINUOUS HINGE DOORS WITH FIXED FLAT GLAZING. JAMB TREATED AS SIDELITE MULLION		