

## 1. MATERIALS & FINISHES

- A. STAINLESS STEEL, BRASS, AND BRONZE ARE AVAILABLE IN #8 MIRROR, #6 SATIN, #4 SATIN, OR NON-DIRECTIONAL (ANGEL HAIR) FINISH. DAWSON DOES NOT PROVIDE LACQUERED FINISH ON BRASS OR BRONZE PRODUCTS. WET PAINTED OR POWDER COATED DOORS WILL BE FABRICATED FROM GALVANNEALED STEEL. CONSULT FACTORY FOR CUSTOM FINISHES.
- B. STAINLESS STEEL AND PAINTED GALVANNEALED STEEL RUGGED SERIES DOORS TO BE FABRICATED WITH 11 GA DOOR PANS AND 14 GA INTERNAL COMPONENTS. GLASS STOPS AND REMOVABLE HEELS TO BE FABRICATED FROM 14 GA MATERIAL.
- C. BRASS AND BRONZE RUGGED SERIES DOORS TO BE FABRICATED WITH .120" DOOR PANS AND .090" INTERNAL COMPONENTS. GLASS STOPS AND REMOVABLE HEELS TO BE FABRICATED FROM .060" MATERIAL.
- D. STAINLESS STEEL AND PAINTED GALVANNEALED STEEL FRAMES AND DOOR STOPS TO BE FABRICATED FROM 13 GA MATERIAL. TRANSOM AND SIDELITE GLASS STOPS TO BE FABRICATED FROM 16 GA MATERIAL.
- E. BRASS AND BRONZE FRAMES AND DOOR STOPS TO BE FABRICATED FROM .090" MATERIAL. TRANSOM AND SIDELITE GLASS STOPS TO BE FABRICATED FROM .060" MATERIAL.

## 2. STANDARD DIMENSIONS

- A. DOORS HAVE A MINIMUM TOP RAIL OF 4". STILE AND RAIL DOORS HAVE A MINIMUM STILE WIDTH OF  $2\frac{3}{4}$ ". ALL DOORS HAVE A STANDARD BOTTOM RAIL DIMENSION OF 10" TO MEET ADA CODE. MINIMUM BOTTOM RAIL OF 6" WILL NOT MEET ADA. MINIMUM DIMENSIONS SUBJECT TO CHANGE BASED ON HARDWARE - CONSULT FACTORY.
- B. FRAME PROFILES HAVE A MINIMUM SIZE OF 1" FACE x  $4\frac{3}{4}$ " DEPTH. MINIMUM DIMENSIONS SUBJECT TO CHANGE BASED ON HARDWARE AND ASPECT RATIO OF FRAME. CONSULT FACTORY FOR CUSTOM SIZES.
- C. SEE GLAZING DETAILS FOR STANDARD GLASS POCKET AND STANDARD GLASS BITE. CONSULT FACTORY FOR CUSTOM GLASS POCKET OR CUSTOM GLASS BITE.
- E. HORIZONTAL DOOR STOPS TO STOP SHORT ON PIVOT SIDE FOR SWING CLEARANCE. DOOR STOPS FABRICATED  $\frac{5}{8}$ " HIGH STANDARD, VARYING WITH HARDWARE REQUIREMENTS. WIDTH VARIES AS REQUIRED. CONSULT FACTORY FOR CUSTOM SIZES AND PROFILES.
- F. MINIMUM CENTER PIVOT DOOR WIDTH TO MEET ADA MINIMUM OF 32" CLEAR OPENING IS  $36\frac{3}{8}$ ". MINIMUM SIZE OF DOOR SUBJECT TO CHANGE BASED ON HARDWARE REQUIREMENTS.

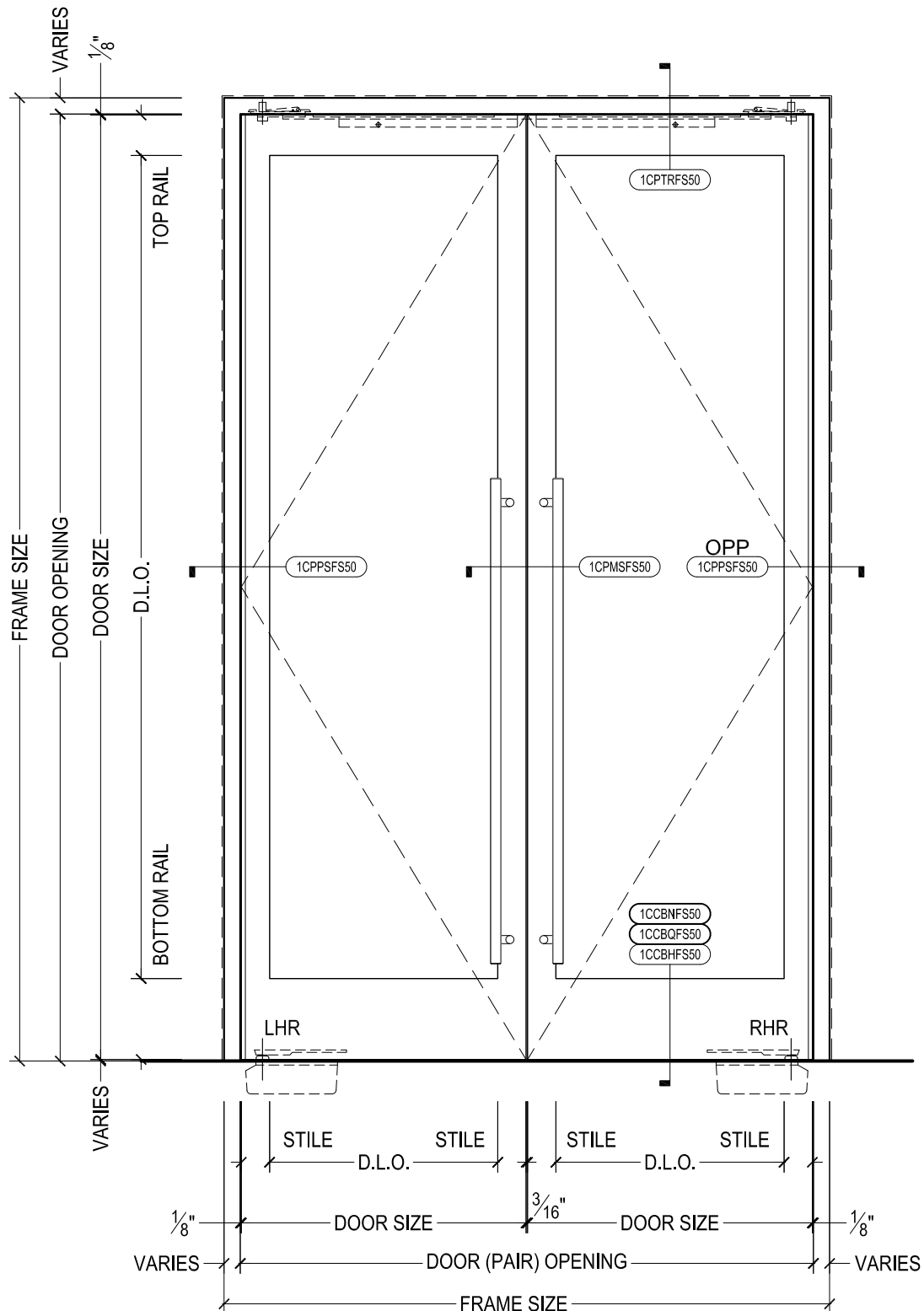
## 3. HARDWARE

- A. AUTOMATIC DOOR BOTTOMS ARE NOT COMPATIBLE WITH CENTER PIVOTED HARDWARE. DAWSON WILL NOT PROVIDE AUTOMATIC DOOR BOTTOMS ON DOORS THAT USE CENTER PIVOTS.
- B. AUTOMATIC OPERATORS WITH END LOAD REQUIREMENTS WILL REQUIRE THE RIXSON H117-3/4 BOTTOM PIVOT. THE BOTTOM PIVOTS TYPICALLY SUPPLIED WITH OVERHEAD AUTOMATIC OPERATORS ARE NOT HEAVY DUTY ENOUGH FOR DAWSON DOORS.
- C. STANDARD PIVOT CENTERLINE IS  $2\frac{3}{4}$ " FROM THE DOOR OPENING, CENTERED IN THE DOOR. CONSULT FACTORY FOR CUSTOM PIVOT CENTERLINE.
- D. MOST CLOSER MANUFACTURERS RECOMMEND AN AUXILIARY STOP TO PREVENT DAMAGE TO THE CLOSER. PLEASE SPECIFY A MANUFACTURER AND MODEL OF A SURFACE MOUNTED, CONCEALED (WHERE APPLICABLE), OR FLOOR / WALL STOP.



825 ALLEN ST • JAMESTOWN, NY 14701 • (716) 664-3811 • WWW.DAWSONDOORS.COM

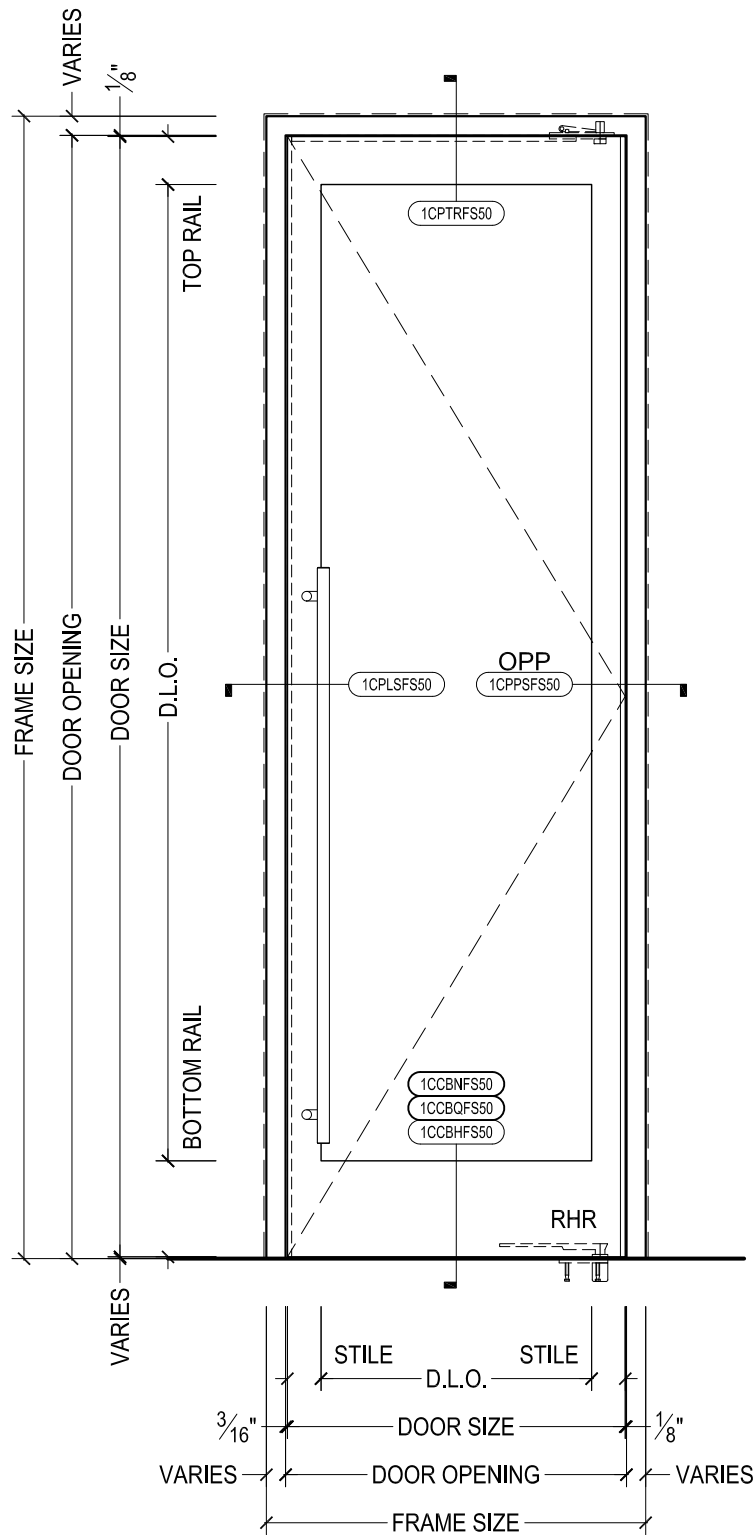
DRAWN BY:	AG	DRAWING DATE:	10/18/19
SERIES #:	001-CP	DRAWING #:	NOTES 1
DESCRIPTION:	GENERAL NOTES FOR 001 RUGGED SERIES DOORS WITH CENTER PIVOTED HARDWARE		



# DAWSON DOORS

825 ALLEN ST • JAMESTOWN, NY 14701 • (716) 664-3811 • WWW.DAWSONDOORS.COM

DRAWN BY:	AG	DRAWING DATE:	10/18/19
SERIES #:	001-CP	DRAWING #:	EL-FC-PAIR
DESCRIPTION:	ELEVATION - STILE AND RAIL RUGGED SERIES CENTER PIVOTED DOORS WITH FLOOR CLOSERS		



# DAWSON DOORS

825 ALLEN ST • JAMESTOWN, NY 14701 • (716) 664-3811 • WWW.DAWSONDOORS.COM

DRAWN BY:

AG

DRAWING DATE:

10/18/19

SERIES #:

001-CP

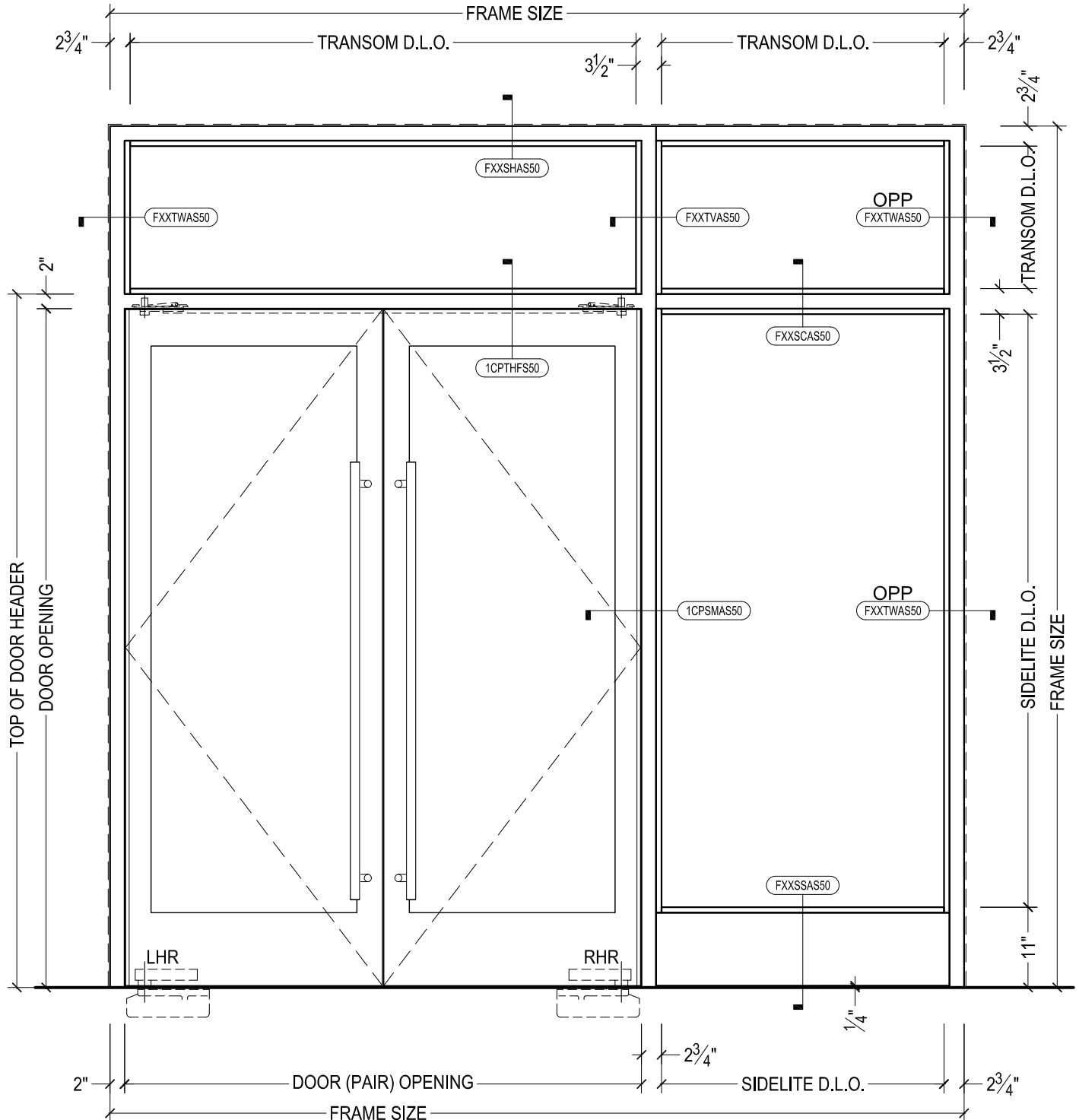
DRAWING #:

EL-SAO-SIN

DESCRIPTION:

ELEVATION - STILE AND RAIL RUGGED SERIES CENTER  
PIVOTED DOORS WITH SURFACE MOUNTED AUTOMATIC  
OPERATOR

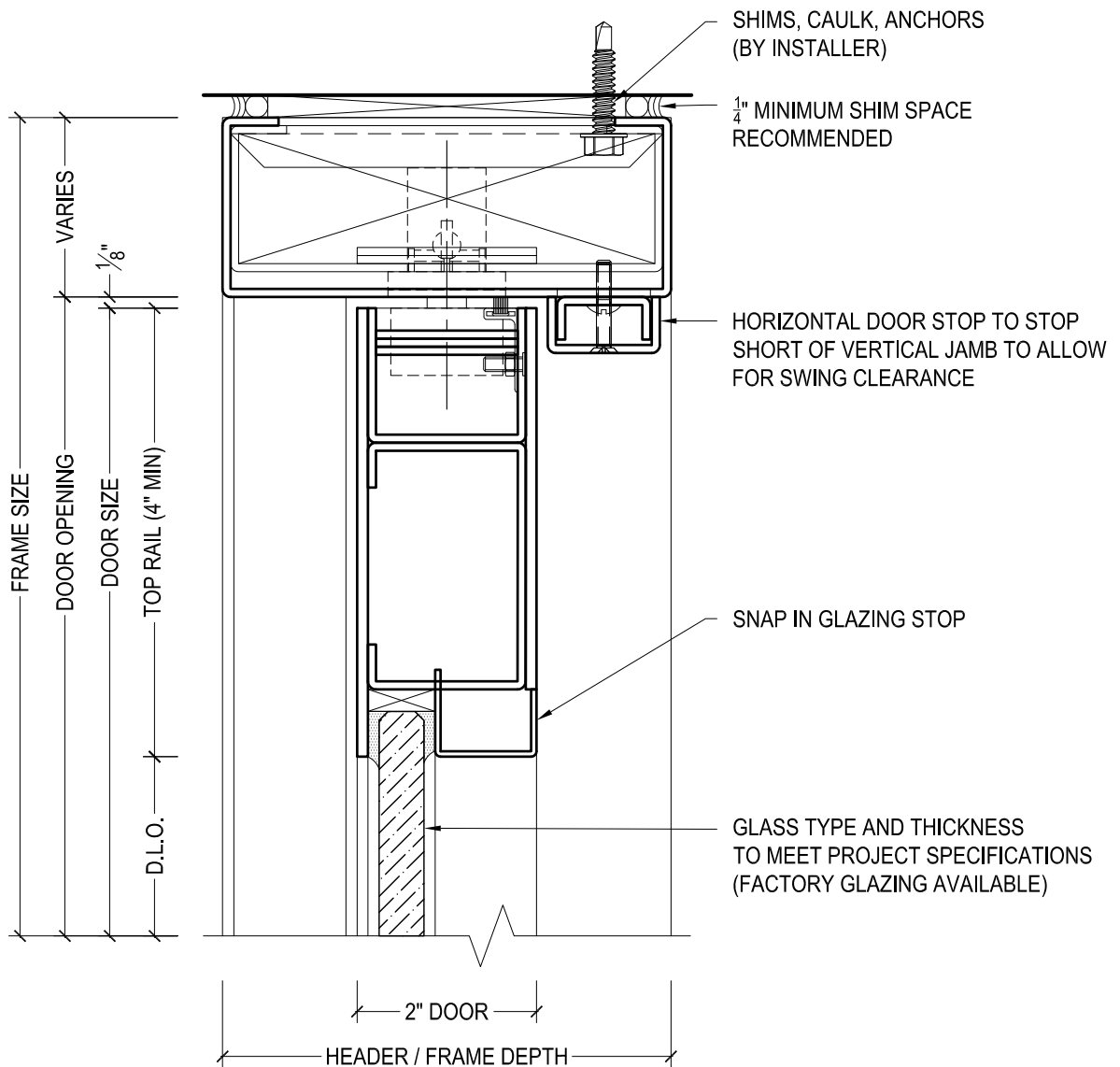
**NOTE: HORIZONTAL OR VERTICAL FIELD SPLICES  
MAY BE REQUIRED TO FACILITATE SHIPPING SIZE  
LIMITATIONS. CONSULT FACTORY FOR OPTIONS**



**DAWSON DOORS**

825 ALLEN ST • JAMESTOWN, NY 14701 • (716) 664-3811 • WWW.DAWSONDOORS.COM

DRAWN BY:	AG	DRAWING DATE:	10/18/19
SERIES #:	001-CP	DRAWING #:	EL-CP-SLT
DESCRIPTION:	ELEVATION - STILE AND RAIL RUGGED SERIES CENTER PIVOTED DOORS WITH FRAME SIDELITE AND TRANSOM		



# DAWSON DOORS

825 ALLEN ST • JAMESTOWN, NY 14701 • (716) 664-3811 • WWW.DAWSONDOORS.COM

DRAWN BY:

AG

DRAWING DATE:

10/18/19

SERIES #:

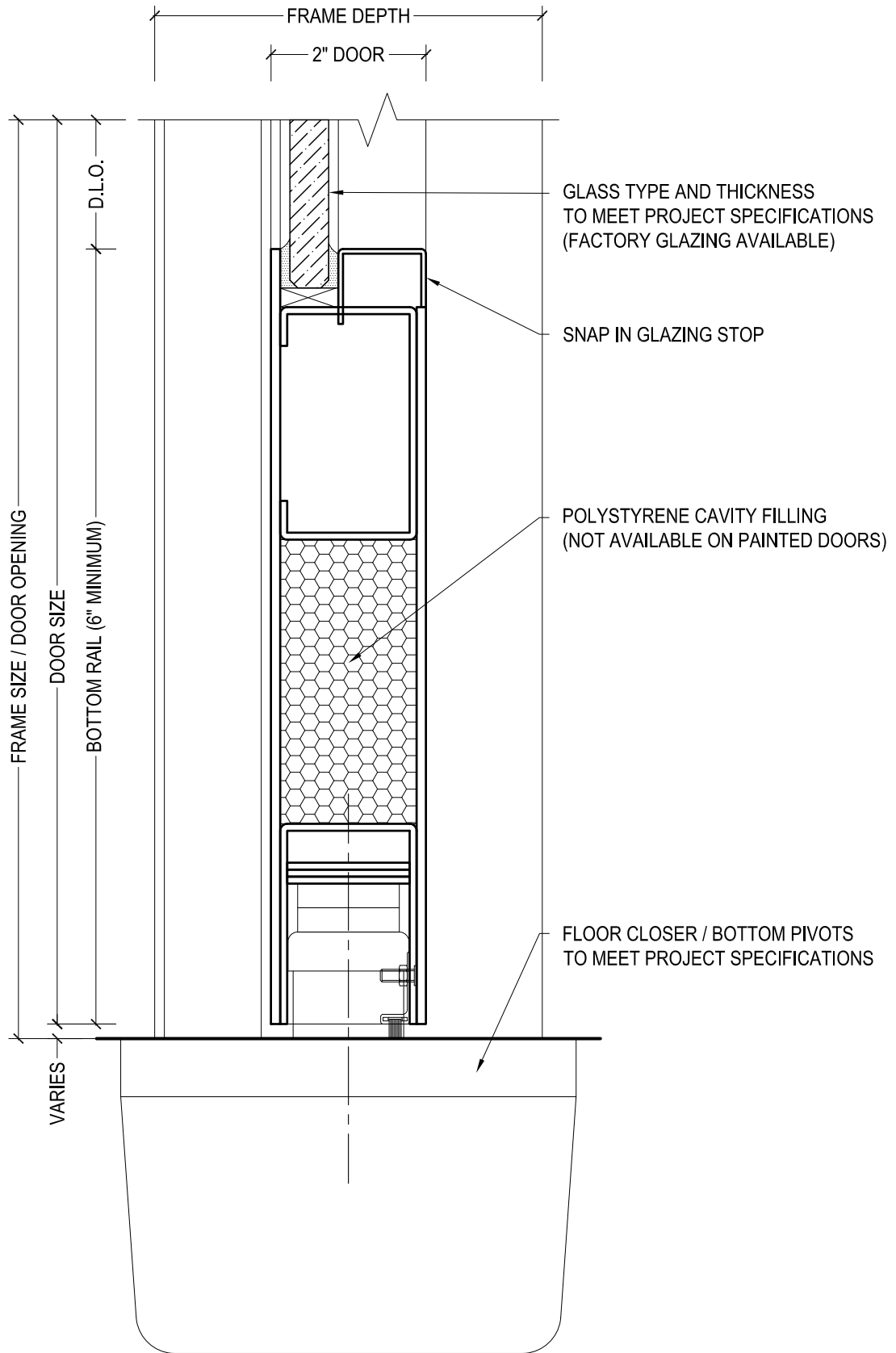
001-CP

DRAWING #:

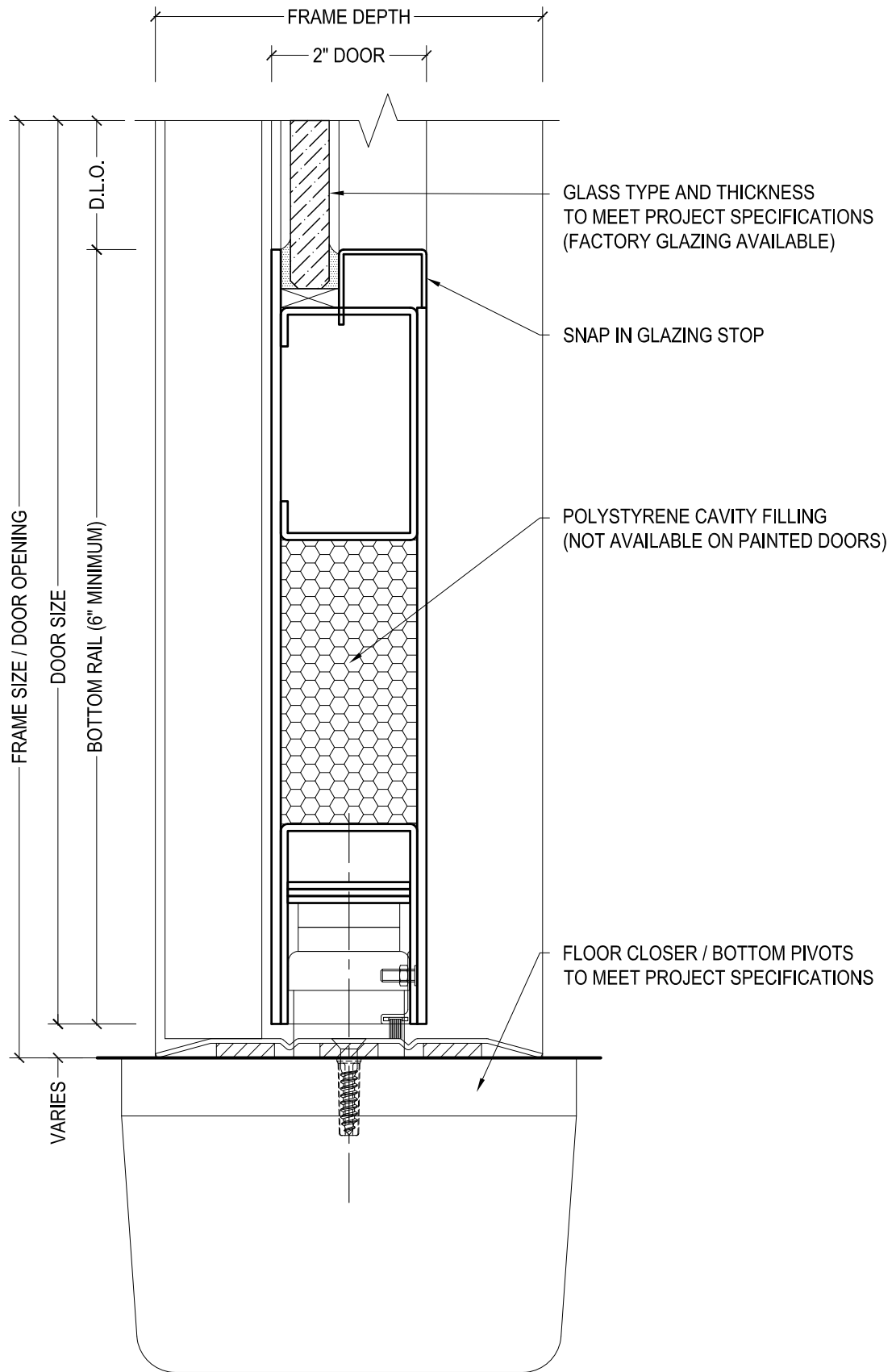
1CPTRFS50

DESCRIPTION:

HEADER / TOP RAIL - RUGGED SERIES CENTER PIVOTED DOORS

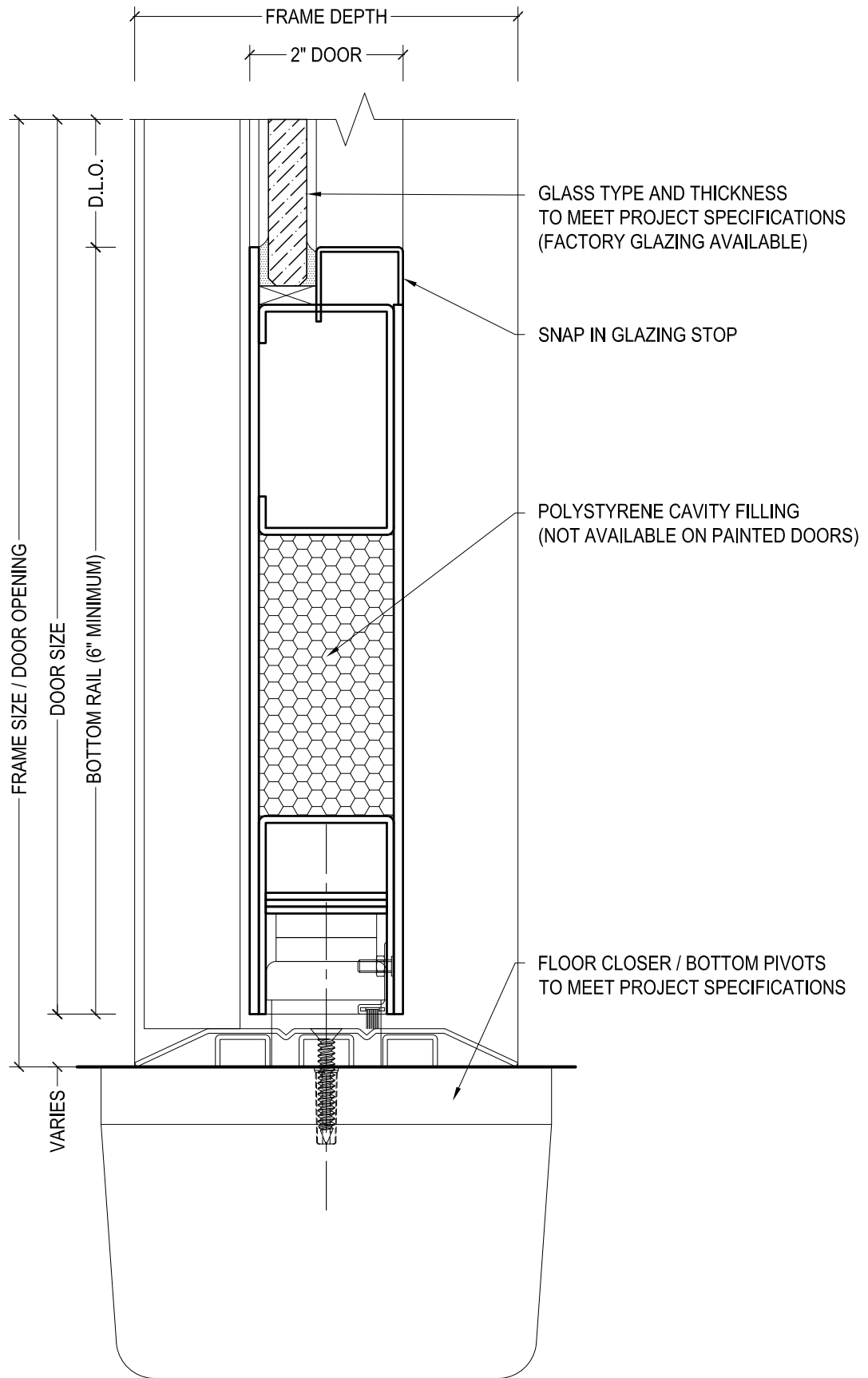


DRAWN BY:	AG	DRAWING DATE:	10/18/19
SERIES #:	001-CP	DRAWING #:	1CCBNFS50
DESCRIPTION:	BOTTOM RAIL / FLOOR CLOSER - RUGGED SERIES CENTER PIVOTED DOORS - NO THRESHOLD -		



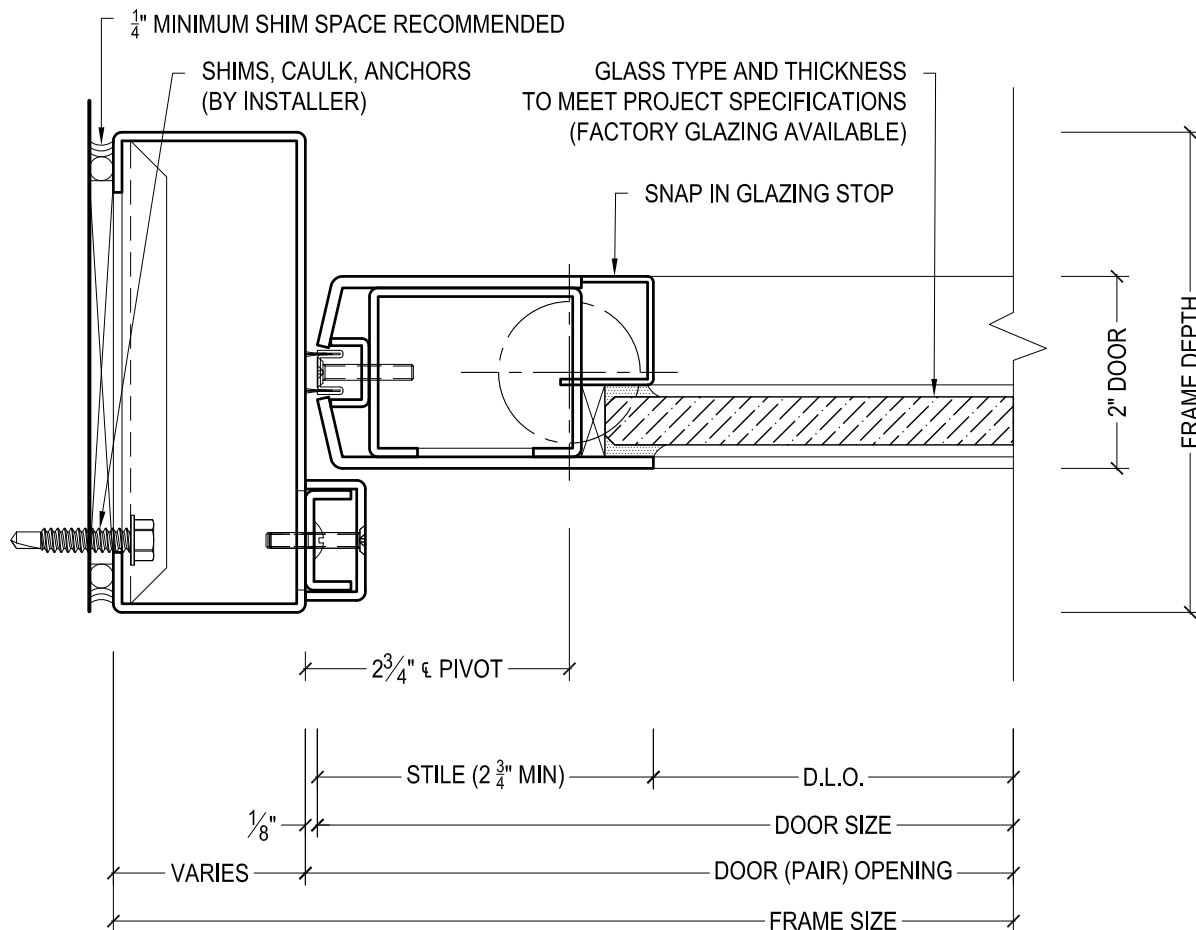
825 ALLEN ST • JAMESTOWN, NY 14701 • (716) 664-3811 • WWW.DAWSONDOORS.COM

DRAWN BY:	AG	DRAWING DATE:	10/18/19
SERIES #:	001-CP	DRAWING #:	1CCBQFS50
DESCRIPTION:	BOTTOM RAIL / FLOOR CLOSER - RUGGED SERIES CENTER PIVOTED DOORS - 1/4" THRESHOLD -		



DRAWN BY:	AG	DRAWING DATE:	10/18/19
SERIES #:	001-CP	DRAWING #:	1CCBHFS50
DESCRIPTION:	BOTTOM RAIL / FLOOR CLOSER - RUGGED SERIES CENTER PIVOTED DOORS - 1/2" THRESHOLD -		





# DAWSON DOORS

825 ALLEN ST • JAMESTOWN, NY 14701 • (716) 664-3811 • WWW.DAWSONDOORS.COM

DRAWN BY:

AG

DRAWING DATE:

10/18/19

SERIES #:

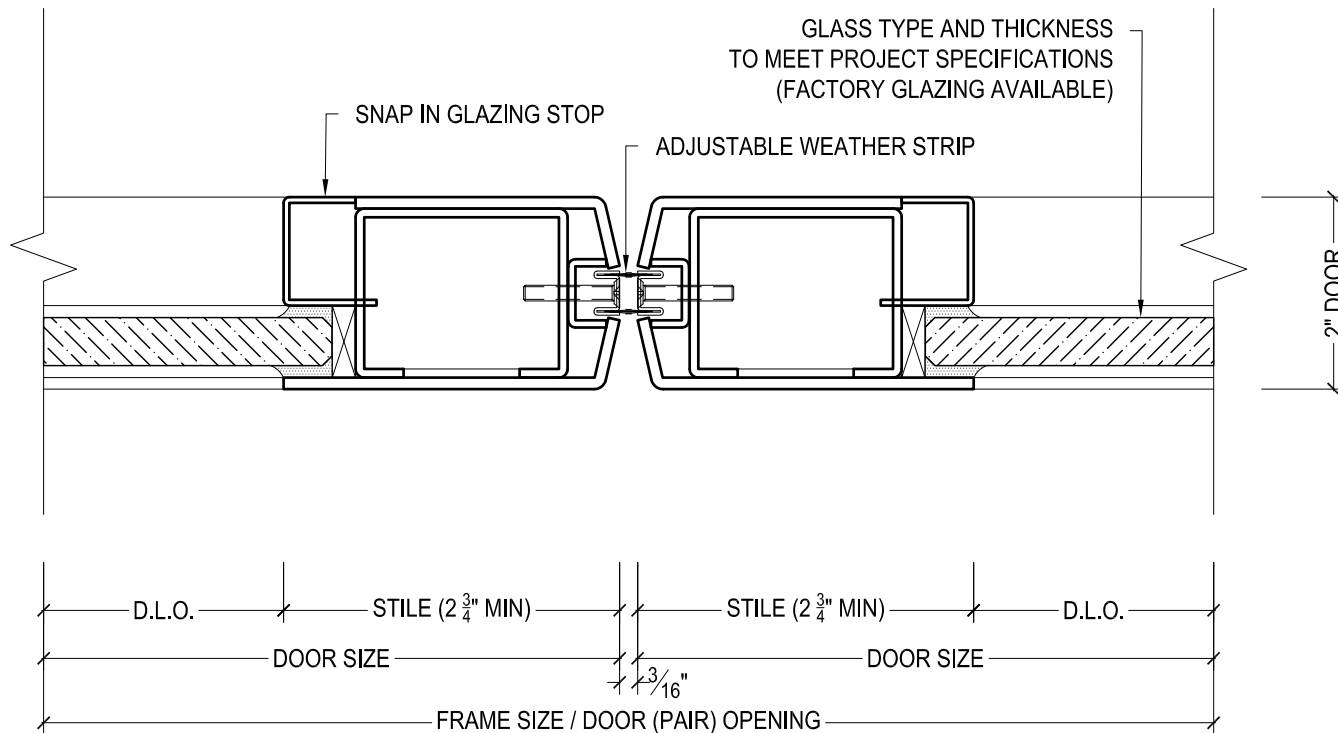
001-CP

DRAWING #:

1CPPSFS50

DESCRIPTION:

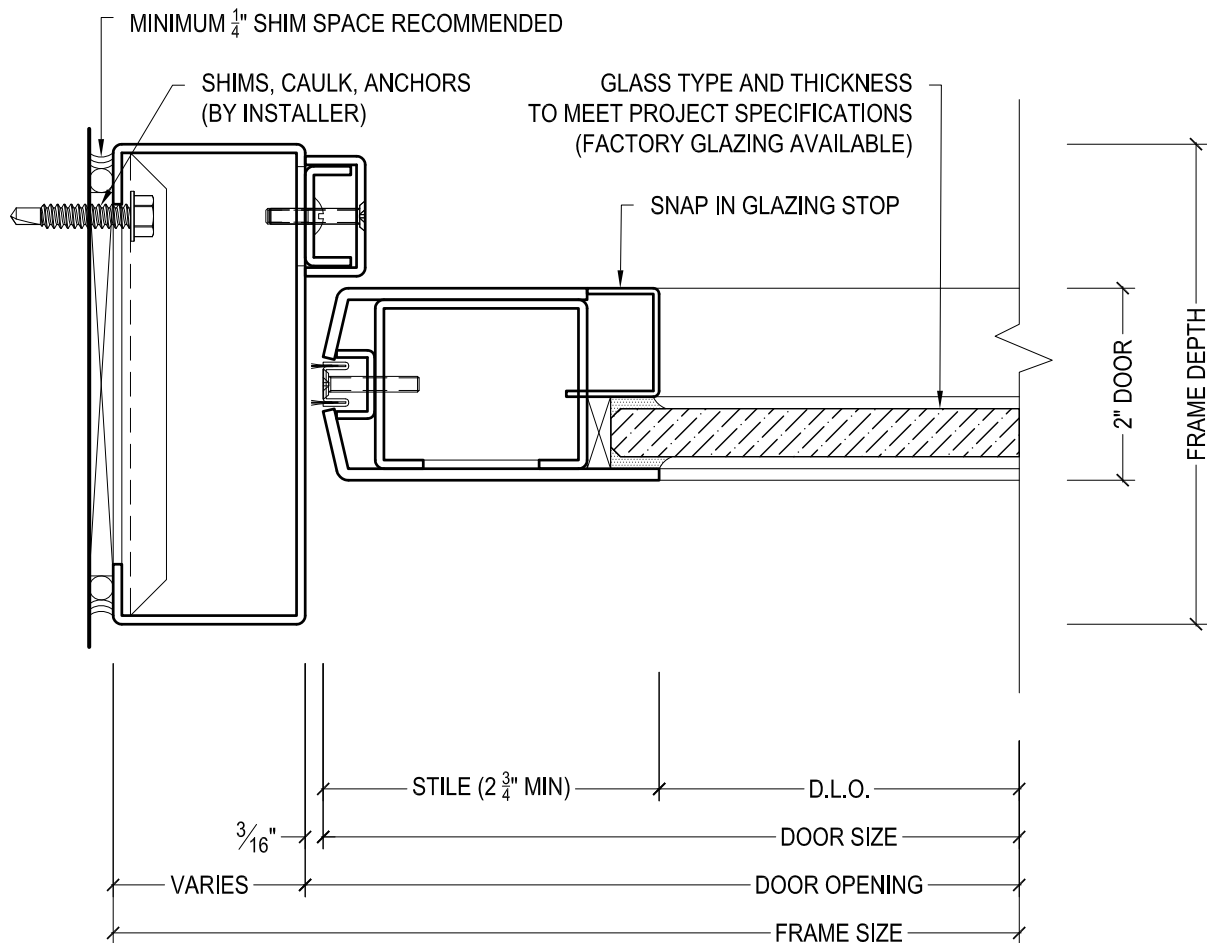
JAMB / PIVOT STILE - RUGGED SERIES CENTER PIVOTED DOORS



**DAWSON DOORS**

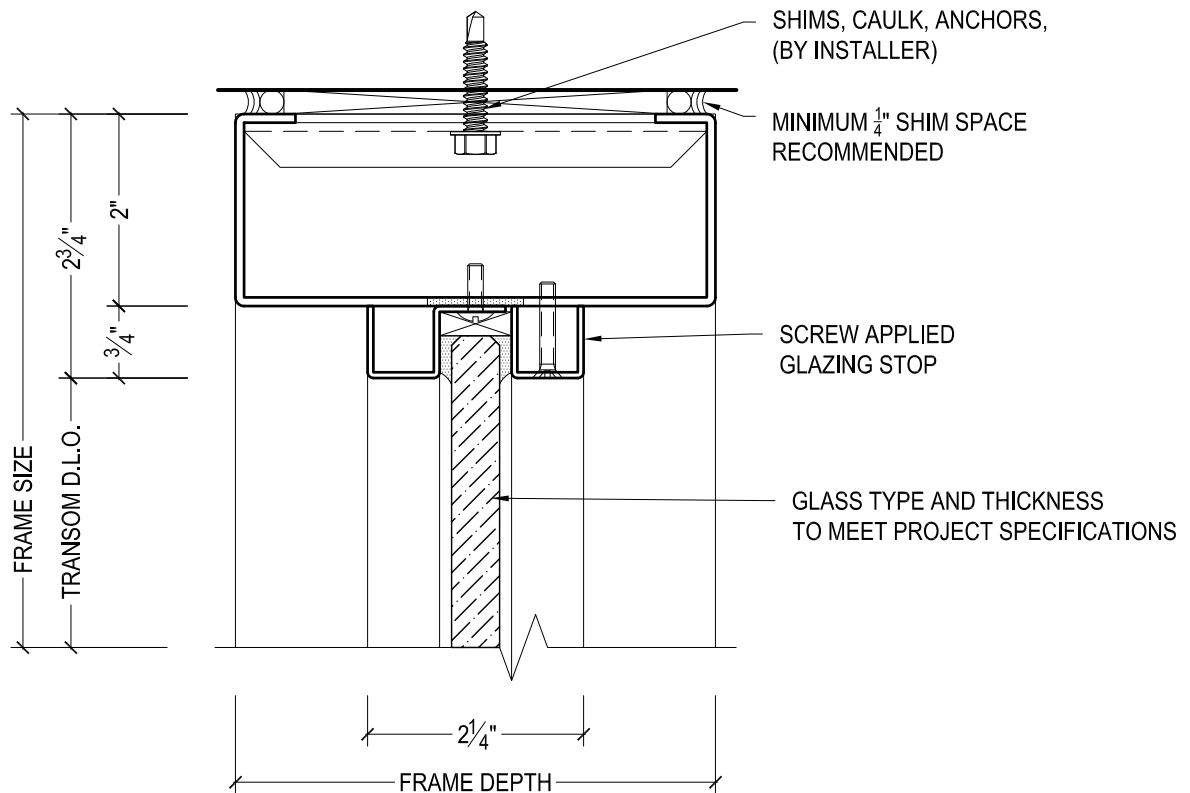
825 ALLEN ST • JAMESTOWN, NY 14701 • (716) 664-3811 • WWW.DAWSONDOORS.COM

DRAWN BY:	AG	DRAWING DATE:	10/18/19
SERIES #:	001-CP	DRAWING #:	1CPMSFS50
DESCRIPTION:	MEETING STILES - RUGGED SERIES CENTER PIVOTED DOORS		



825 ALLEN ST • JAMESTOWN, NY 14701 • (716) 664-3811 • WWW.DAWSONDOORS.COM

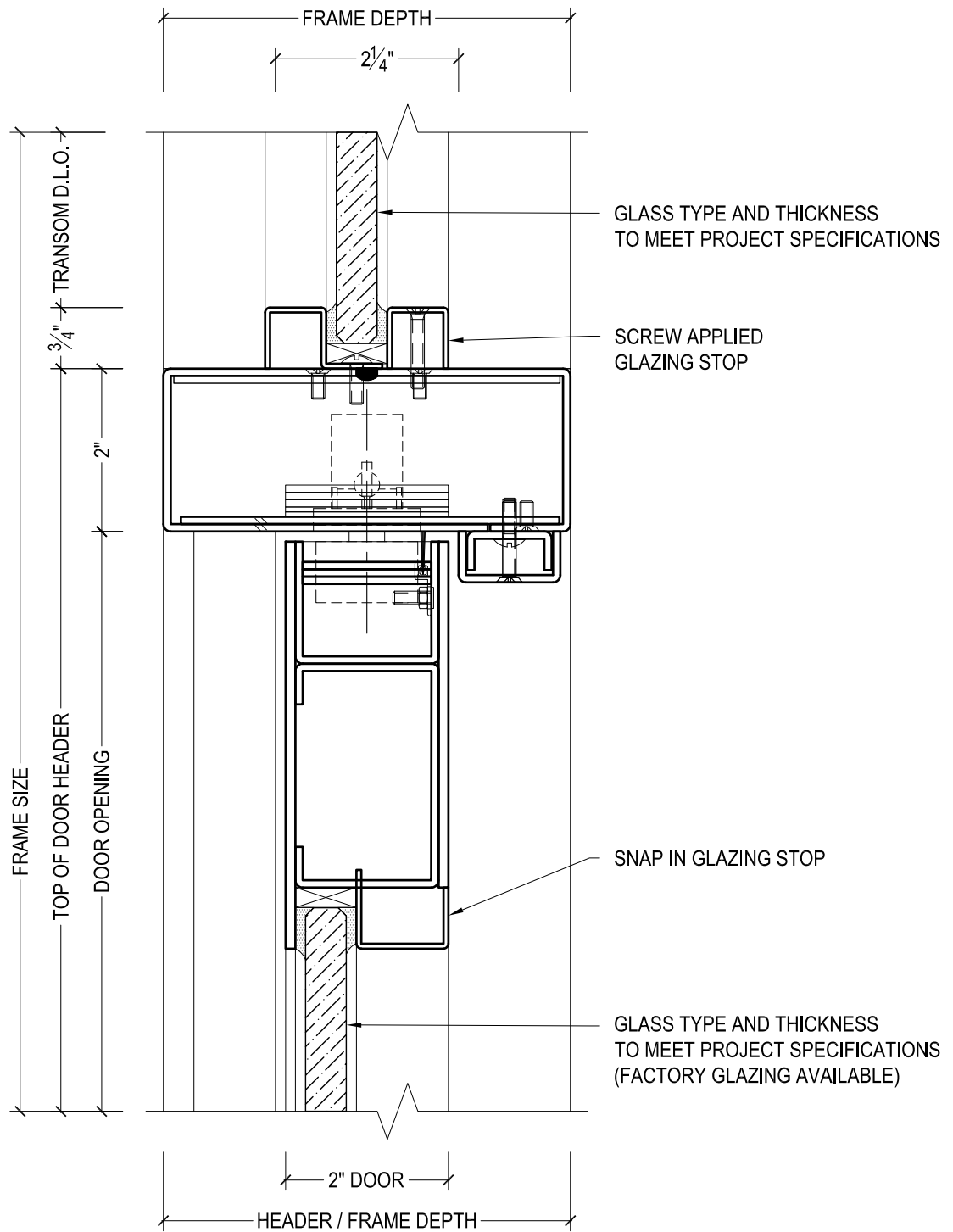
DRAWN BY:	AG	DRAWING DATE:	10/18/19
SERIES #:	001-CP	DRAWING #:	1CPLSFS50
DESCRIPTION:	LOCK JAMB / STILE - RUGGED SERIES CENTER PIVOTED DOORS		



**DAWSON DOORS**

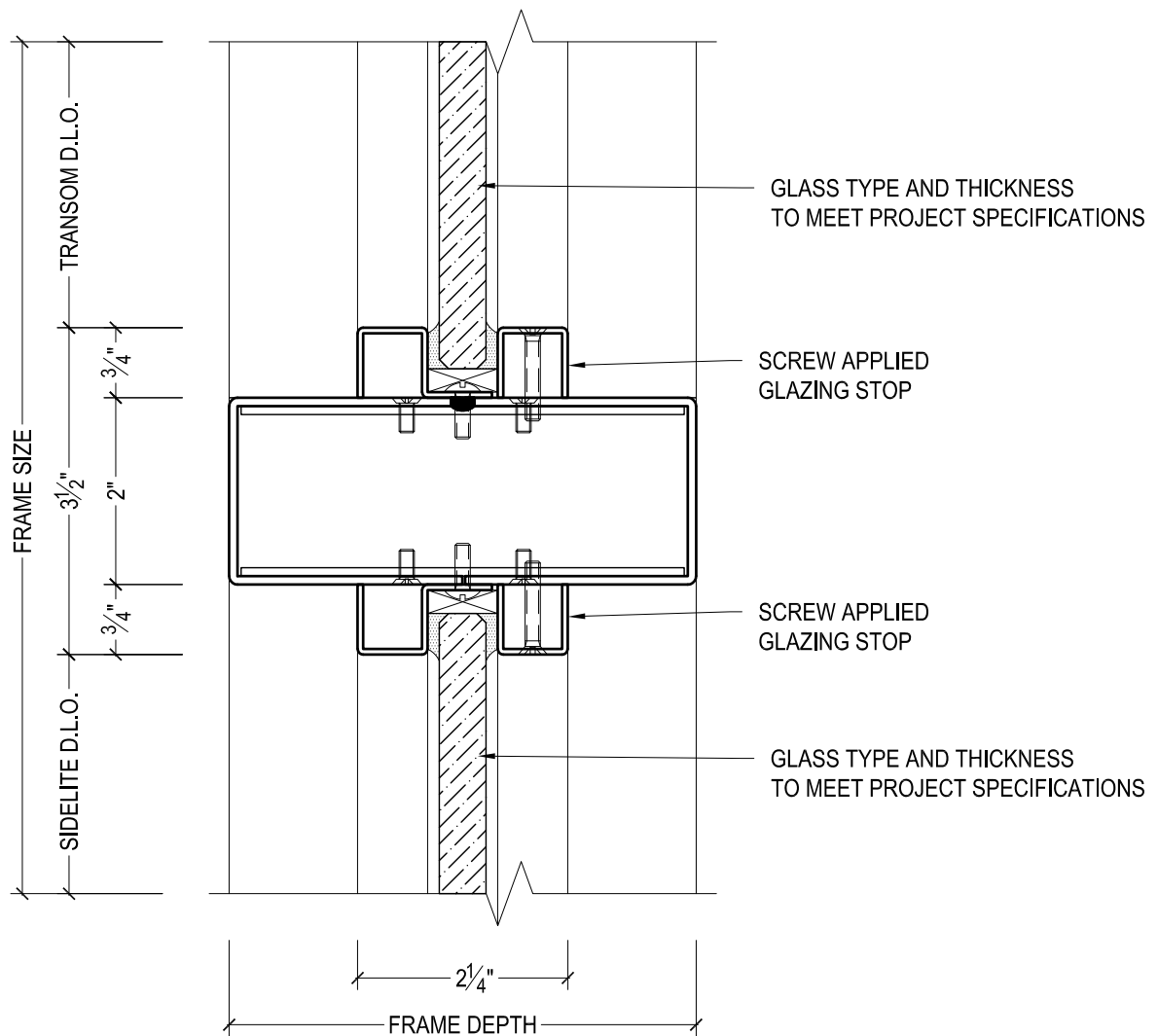
825 ALLEN ST • JAMESTOWN, NY 14701 • (716) 664-3811 • WWW.DAWSONDOORS.COM

DRAWN BY:	AG	DRAWING DATE:	10/18/19
SERIES #:	001-CP	DRAWING #:	FXXSHAS50
DESCRIPTION:	TRANSOM HEADER WITH APPLIED STOPS		



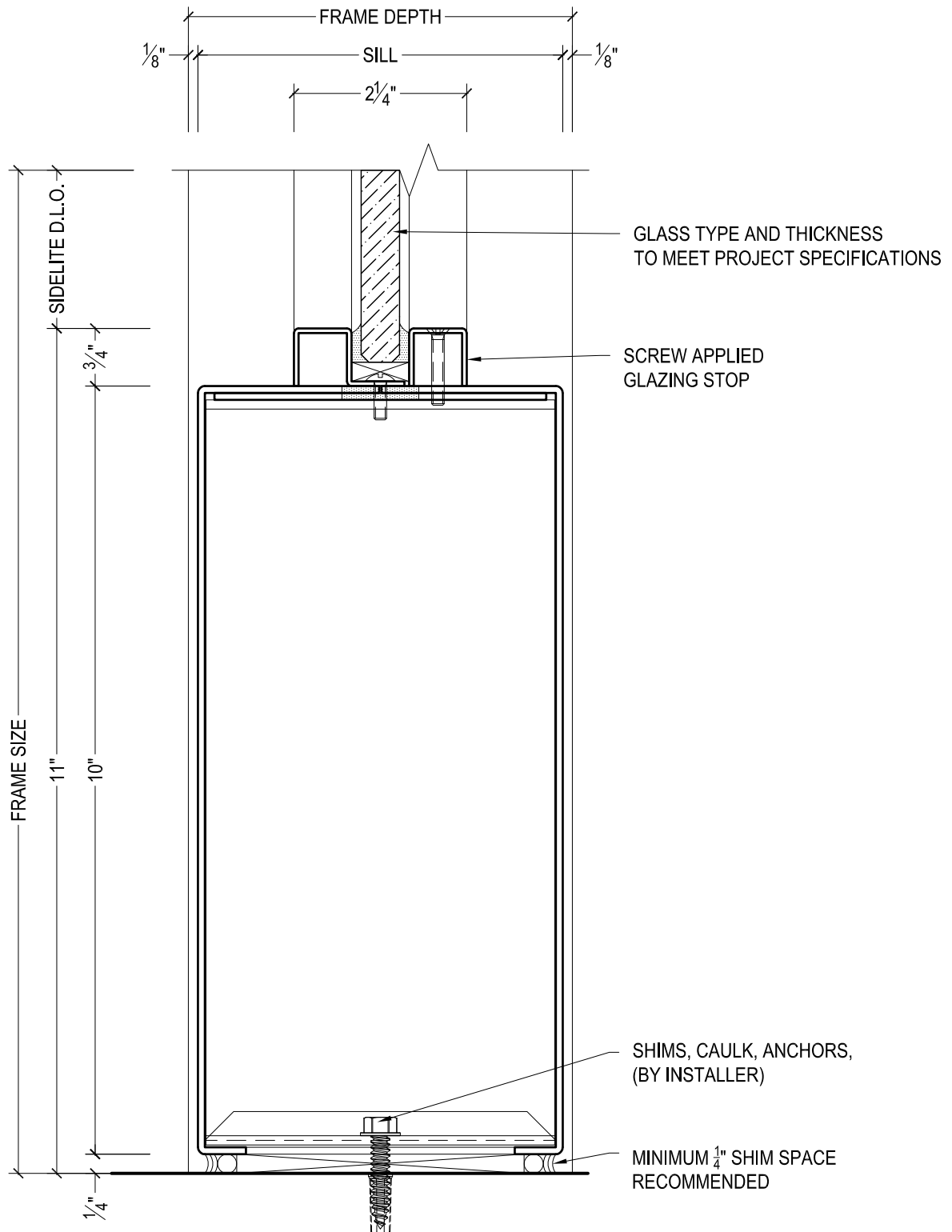
825 ALLEN ST • JAMESTOWN, NY 14701 • (716) 664-3811 • WWW.DAWSONDOORS.COM

DRAWN BY:	AG	DRAWING DATE:	10/18/19
SERIES #:	001-CP	DRAWING #:	1CPTHFS50
DESCRIPTION:	HEADER / TOP RAIL - RUGGED SERIES CENTER PIVOTED DOORS WITH TRANSOM ABOVE WITH APPLIED STOPS		



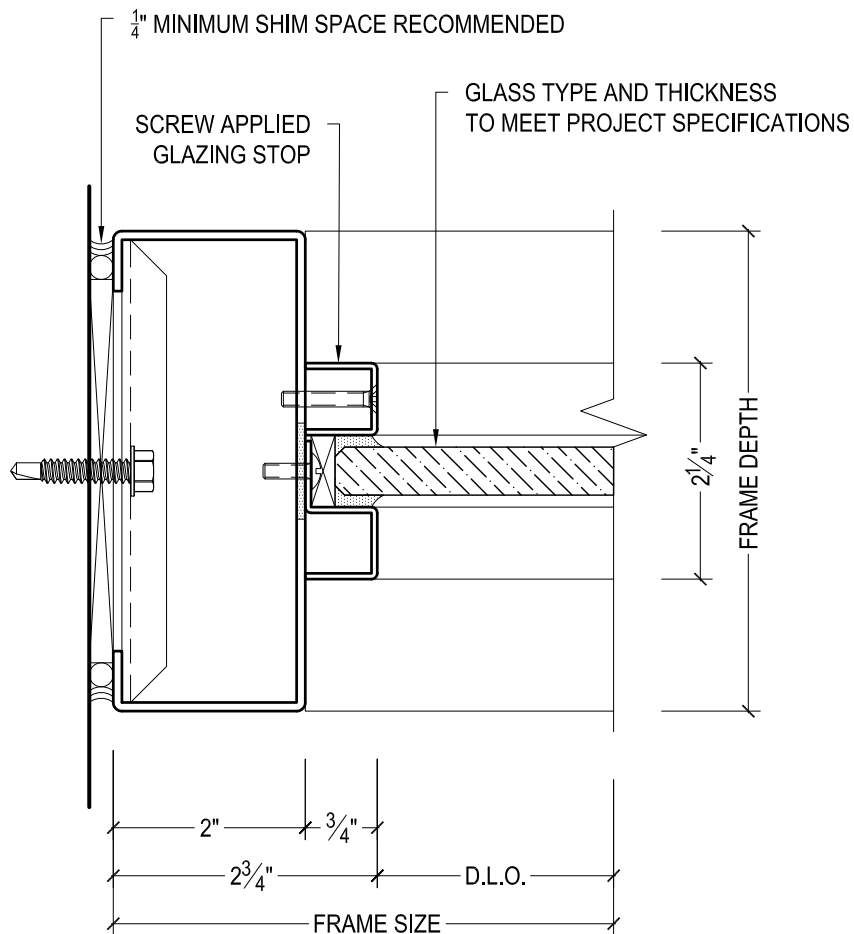
825 ALLEN ST • JAMESTOWN, NY 14701 • (716) 664-3811 • WWW.DAWSONDOORS.COM

DRAWN BY:	AG	DRAWING DATE:	10/18/19
SERIES #:	001-CP	DRAWING #:	FXXSCAS50
DESCRIPTION:	SIDELITE BELOW & TRANSOM ABOVE WITH APPLIED STOPS		



# DAWSON DOORS

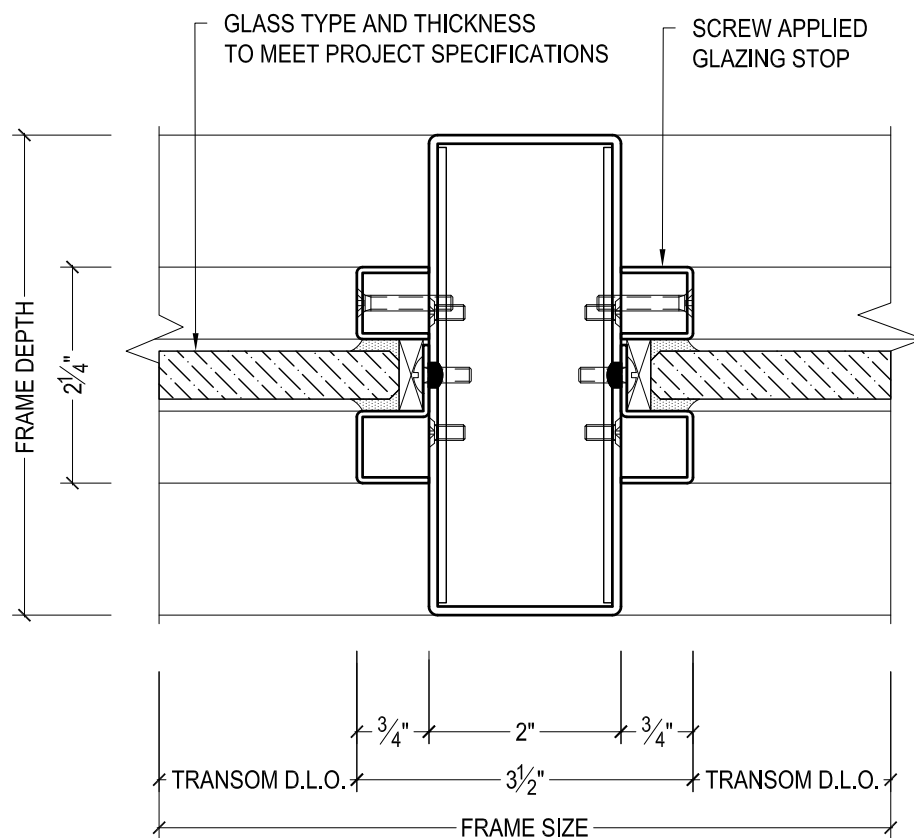
DRAWN BY:	AG	DRAWING DATE:	10/18/19
SERIES #:	001-CP	DRAWING #:	FXXSSAS50
DESCRIPTION:	SIDELITE SILL WITH APPLIED STOPS		



825 ALLEN ST • JAMESTOWN, NY 14701 • (716) 664-3811 • WWW.DAWSONDOORS.COM

DRAWN BY:	AG	DRAWING DATE:	10/18/19
SERIES #:	001-CP	DRAWING #:	FXXTWAS50
DESCRIPTION:	TRANSOM JAMB WITH APPLIED STOPS		





**DAWSON DOORS**

825 ALLEN ST • JAMESTOWN, NY 14701 • (716) 664-3811 • WWW.DAWSONDOORS.COM

DRAWN BY:

AG

DRAWING DATE:

10/18/19

SERIES #:

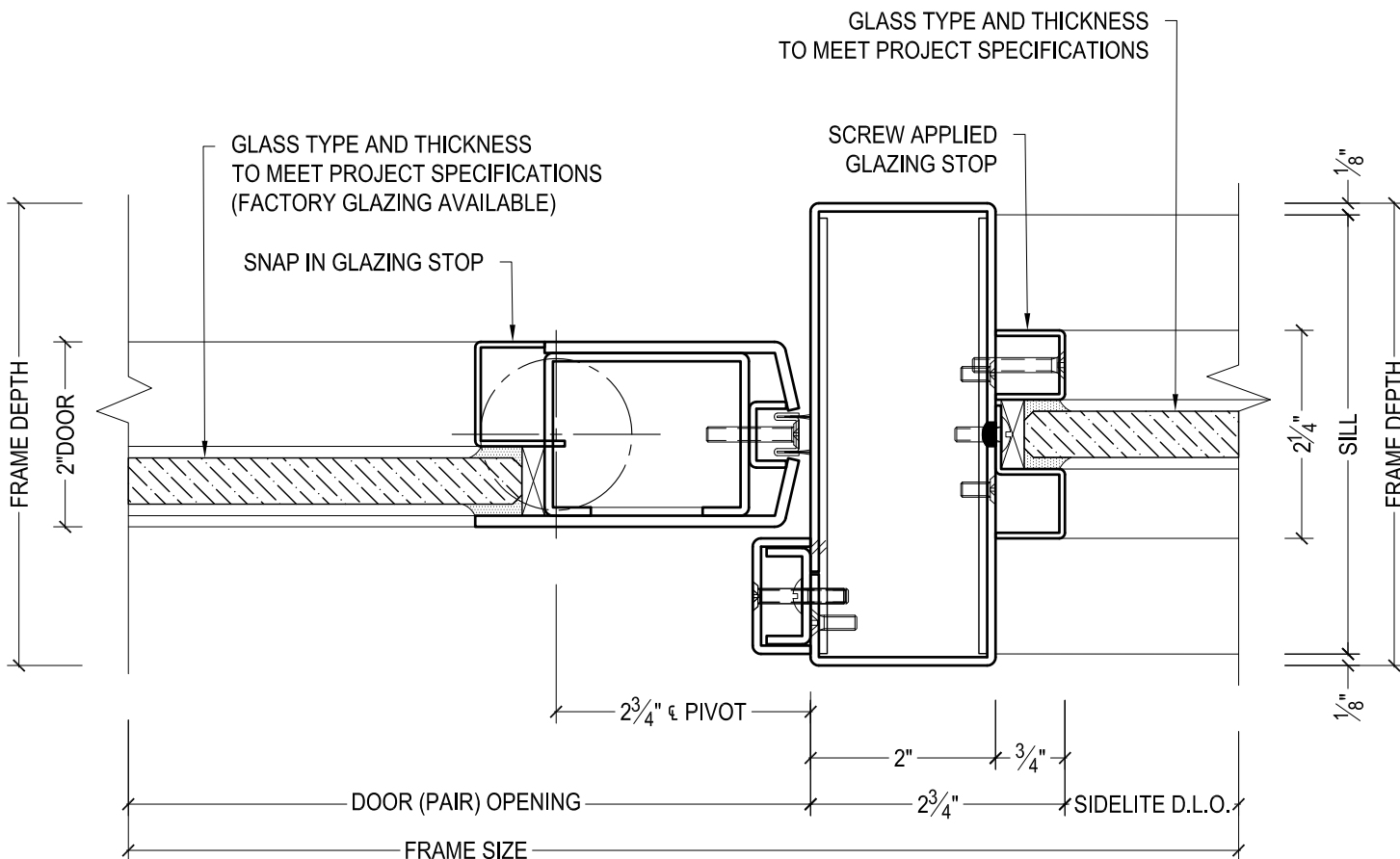
001-CP

DRAWING #:

FXXTVAS50

DESCRIPTION:

TRANSOM MULLION WITH APPLIED STOPS



# DAWSON DOORS

825 ALLEN ST • JAMESTOWN, NY 14701 • (716) 664-3811 • WWW.DAWSONDOORS.COM

DRAWN BY:	AG	DRAWING DATE:	10/18/19
SERIES #:	001-CP	DRAWING #:	1CPSMAS50
DESCRIPTION:	JAMB / PIVOT STILE / SIDELITE MULLION - RUGGED SERIES CENTER PIVOTED DOORS WITH FIXED FLAT GLAZING. JAMB TREATED AS SIDELITE MULLION		