

1. MATERIALS & FINISHES

- A. STAINLESS STEEL, BRASS, AND BRONZE ARE AVAILABLE IN #8 MIRROR, #6 SATIN, #4 SATIN, OR NON-DIRECTIONAL (ANGEL HAIR) FINISH. DAWSON DOES NOT PROVIDE LACQUERED FINISH ON BRASS OR BRONZE PRODUCTS. WET PAINTED OR POWDER COATED DOORS WILL BE FABRICATED FROM GALVANNEALED STEEL. CONSULT FACTORY FOR CUSTOM FINISHES.
- B. STAINLESS STEEL AND PAINTED GALVANNEALED STEEL RUGGED SERIES DOORS TO BE FABRICATED WITH 11 GA DOOR PANS AND 14 GA INTERNAL COMPONENTS. GLASS STOPS TO BE FABRICATED FROM 14 GA MATERIAL.
- C. BRASS AND BRONZE RUGGED SERIES DOORS TO BE FABRICATED WITH .120" DOOR PANS AND .090" INTERNAL COMPONENTS. GLASS STOPS TO BE FABRICATED FROM .060" MATERIAL.
- D. STAINLESS STEEL AND PAINTED GALVANNEALED STEEL FRAMES AND DOOR STOPS TO BE FABRICATED FROM 13 GA MATERIAL. TRANSOM AND SIDELITE GLASS STOPS TO BE FABRICATED FROM 16 GA MATERIAL.
- E. BRASS AND BRONZE FRAMES AND DOOR STOPS TO BE FABRICATED FROM .090" MATERIAL. TRANSOM AND SIDELITE GLASS STOPS TO BE FABRICATED FROM .060" MATERIAL.

2. STANDARD DIMENSIONS

- A. DOORS HAVE A MINIMUM TOP RAIL OF 4". STILE AND RAIL DOORS HAVE A MINIMUM STILE WIDTH OF $2\frac{3}{4}"$. ALL DOORS HAVE A STANDARD BOTTOM RAIL DIMENSION OF 10" TO MEET ADA CODE. MINIMUM BOTTOM RAIL OF 6" WILL NOT MEET ADA. MINIMUM DIMENSIONS SUBJECT TO CHANGE BASED ON HARDWARE - CONSULT FACTORY.
- B. FRAME PROFILES HAVE A MINIMUM SIZE OF 1" FACE x $4\frac{3}{4}"$ DEPTH. MINIMUM DIMENSIONS SUBJECT TO CHANGE BASED ON HARDWARE AND ASPECT RATIO OF FRAME. CONSULT FACTORY FOR CUSTOM SIZES.
- C. SEE GLAZING DETAILS FOR STANDARD GLASS POCKET AND STANDARD GLASS BITE. CONSULT FACTORY FOR CUSTOM GLASS POCKET OR CUSTOM GLASS BITE.
- E. DOOR STOPS FABRICATED $\frac{5}{8}"$ HIGH STANDARD, VARYING WITH HARDWARE REQUIREMENTS. WIDTH VARIES AS REQUIRED. CONSULT FACTORY FOR CUSTOM SIZES AND PROFILES.
- F. MINIMUM OFFSET PIVOTED DOOR WIDTH TO MEET ADA MINIMUM OF 32" CLEAR OPENING IS $35\frac{1}{2}"$. MINIMUM SIZE OF DOOR SUBJECT TO CHANGE BASED ON HARDWARE REQUIREMENTS.

3. HARDWARE

- A. STANDARD PIVOT CENTERLINE IS $\frac{3}{4}"$ FROM THE DOOR OPENING, $\frac{3}{4}"$ OFFSET TO THE FACE OF THE DOOR. CONSULT FACTORY FOR CUSTOM PIVOT CENTERLINE.
- B. MOST CLOSER MANUFACTURERS RECOMMEND AN AUXILIARY STOP TO PREVENT DAMAGE TO THE CLOSER. PLEASE SPECIFY A MANUFACTURER AND MODEL OF A SURFACE MOUNTED, CONCEALED (WHERE APPLICABLE), OR FLOOR / WALL STOP.
- C. OFFSET PIVOTS REQUIRE (1) INTERMEDIATE PIVOT FOR DOORS FROM 60" TO 90" TALL. AN ADDITIONAL INTERMEDIATE PIVOT IS REQUIRED FOR EACH ADDITIONAL 30". INTERMEDIATE PIVOTS TO BE EQUALLY SPACED IN THE DOOR OPENING UNLESS OTHERWISE SPECIFIED.
- D. IN SOME CASES WHERE A TOP PIVOT CANNOT BE USED DUE TO HARDWARE LIMITATIONS, AN ADDITIONAL INTERMEDIATE PIVOT WILL BE USED TO ACT AS A TOP PIVOT.



825 ALLEN ST • JAMESTOWN, NY 14701 • (716) 664-3811 • WWW.DAWSONDOORS.COM

DRAWN BY:

AG

DRAWING DATE:

10/23/19

SERIES #:

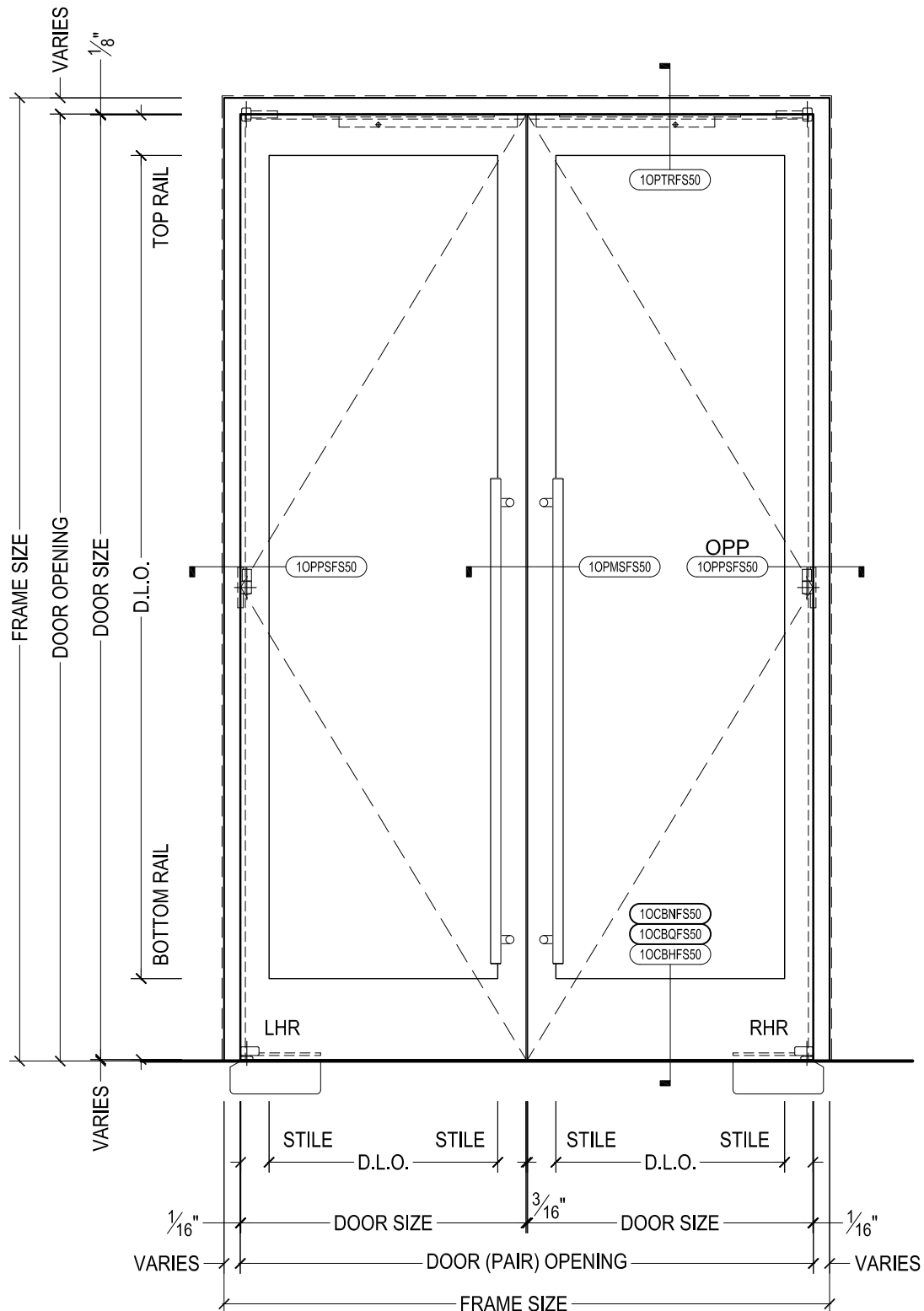
001-OP

DRAWING #:

NOTES 1

DESCRIPTION:

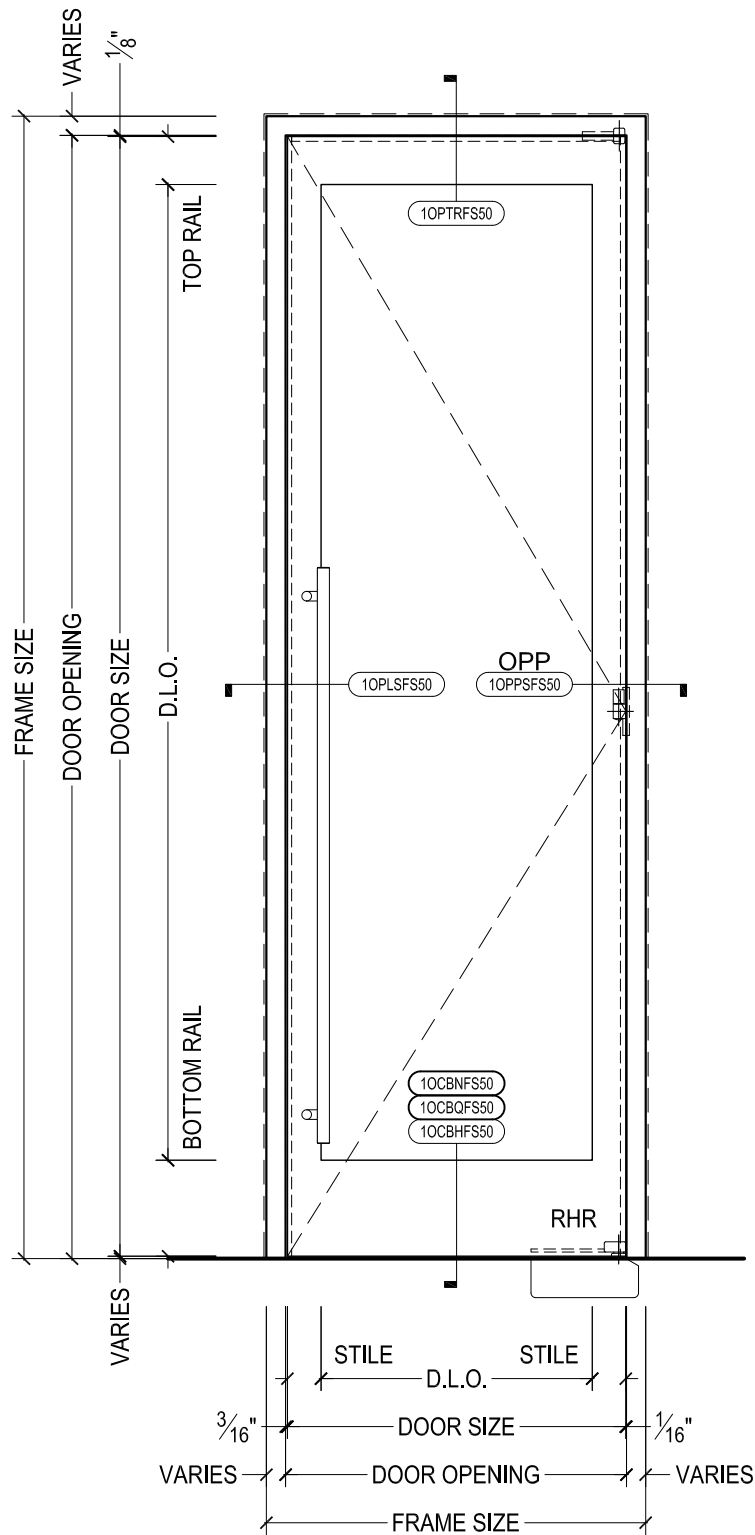
GENERAL NOTES FOR 001 RUGGED SERIES DOORS WITH
OFFSET PIVOTED HARDWARE



DAWSON DOORS

825 ALLEN ST • JAMESTOWN, NY 14701 • (716) 664-3811 • WWW.DAWSONDOORS.COM

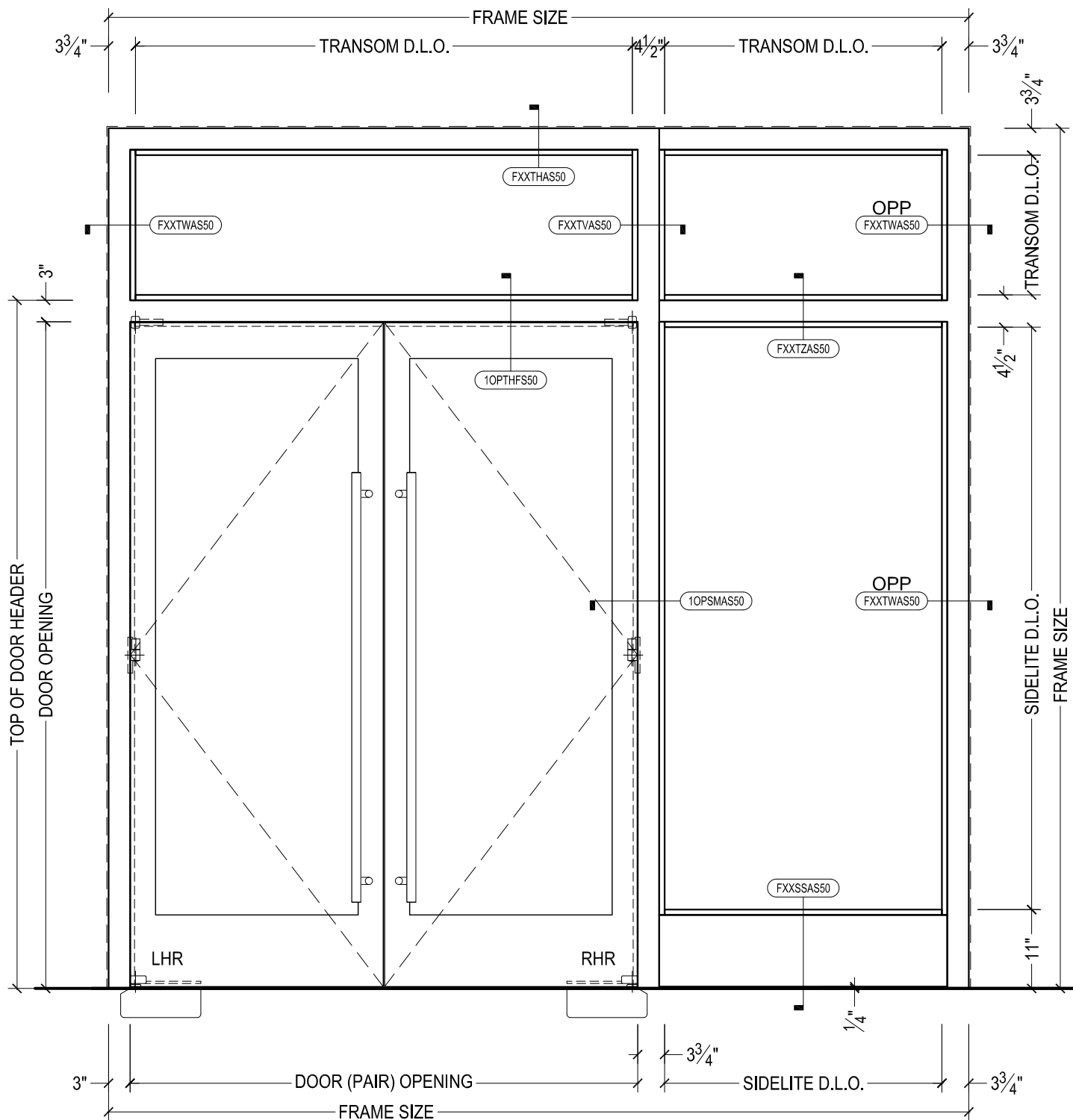
DRAWN BY:	AG	DRAWING DATE:	10/23/19
SERIES #:	001-OP	DRAWING #:	EL-FC-PAIR
DESCRIPTION:	ELEVATION - STILE AND RAIL RUGGED SERIES OFFSET PIVOTED DOORS WITH FLOOR CLOSERS		



DAWSON DOORS

825 ALLEN ST • JAMESTOWN, NY 14701 • (716) 664-3811 • WWW.DAWSONDOORS.COM

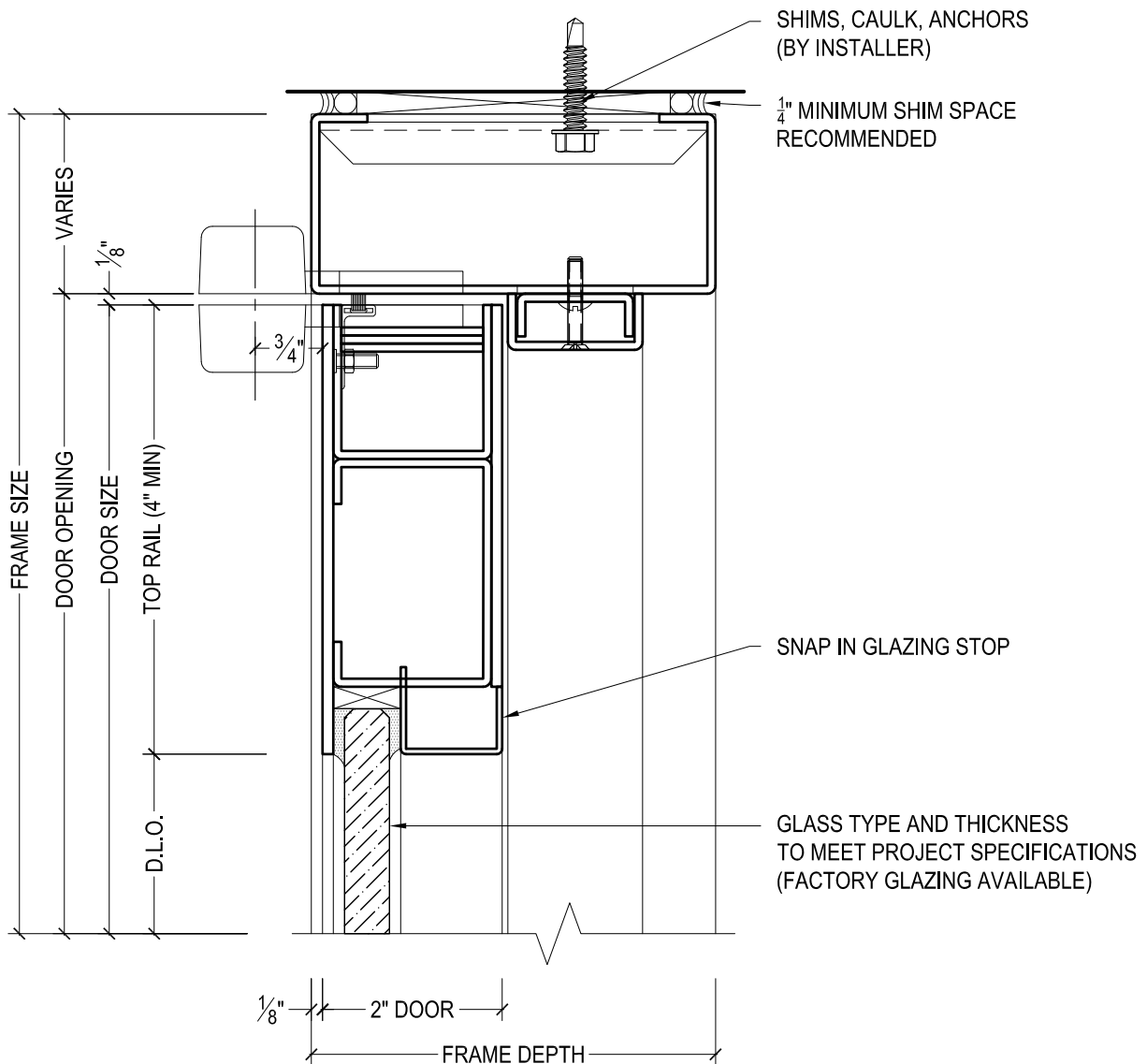
DRAWN BY:	AG	DRAWING DATE:	10/23/19
SERIES #:	001-OP	DRAWING #:	EL-SAO-SIN
DESCRIPTION:	ELEVATION - STILE AND RAIL RUGGED SERIES OFFSET PIVOTED DOORS WITH SURFACE MOUNTED AUTOMATIC OPERATOR		



DAWSON DOORS

825 ALLEN ST • JAMESTOWN, NY 14701 • (716) 664-3811 • WWW.DAWSONDOORS.COM

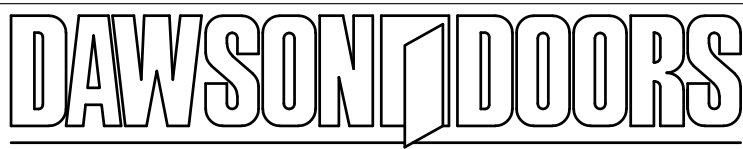
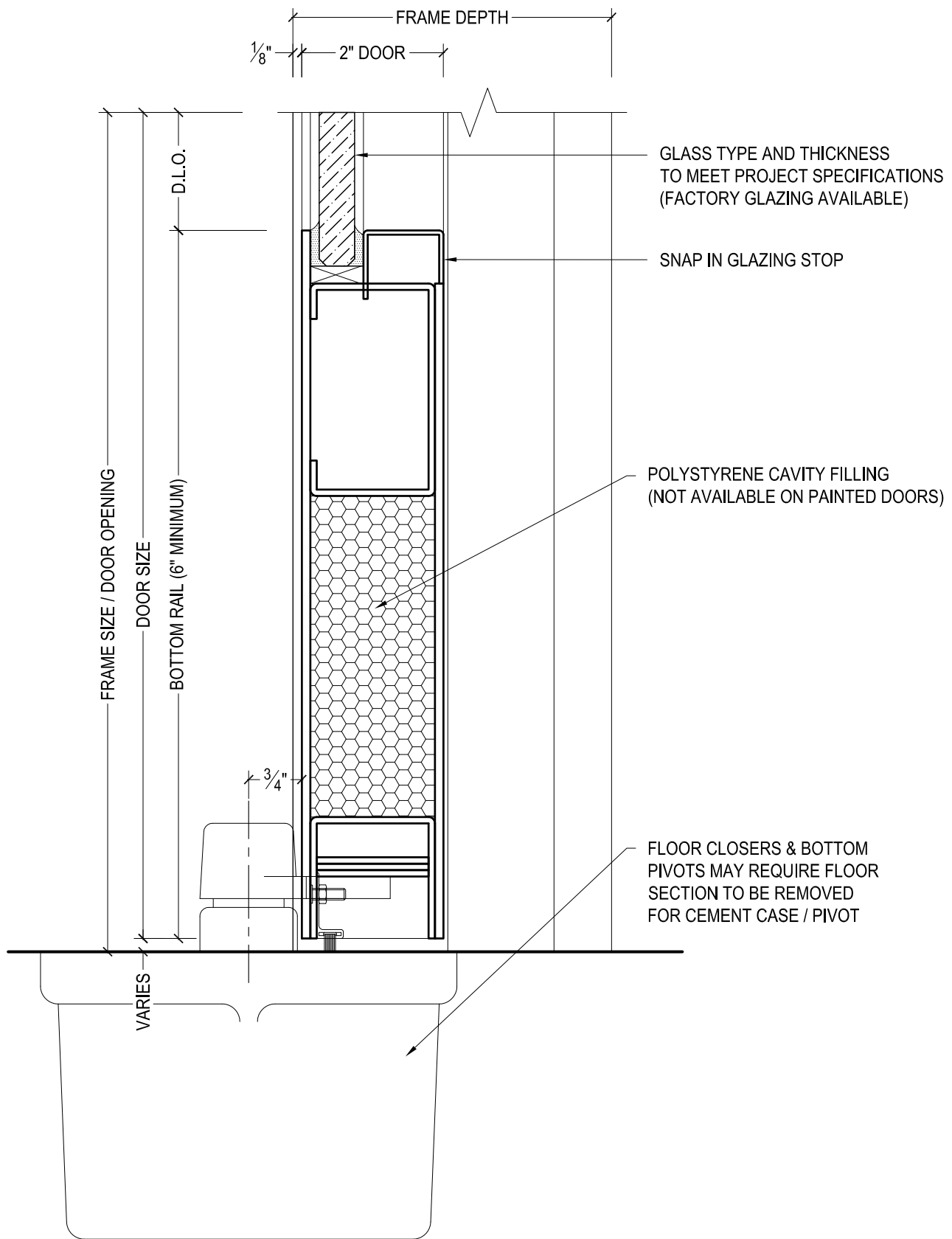
DRAWN BY:	AG	DRAWING DATE:	10/23/19
SERIES #:	001-OP	DRAWING #:	EL-OP-SLT
DESCRIPTION:	ELEVATION - STILE AND RAIL RUGGED SERIES OFFSET PIVOTED DOORS WITH FRAME SIDELITE AND TRANSOM		



DAWSON DOORS

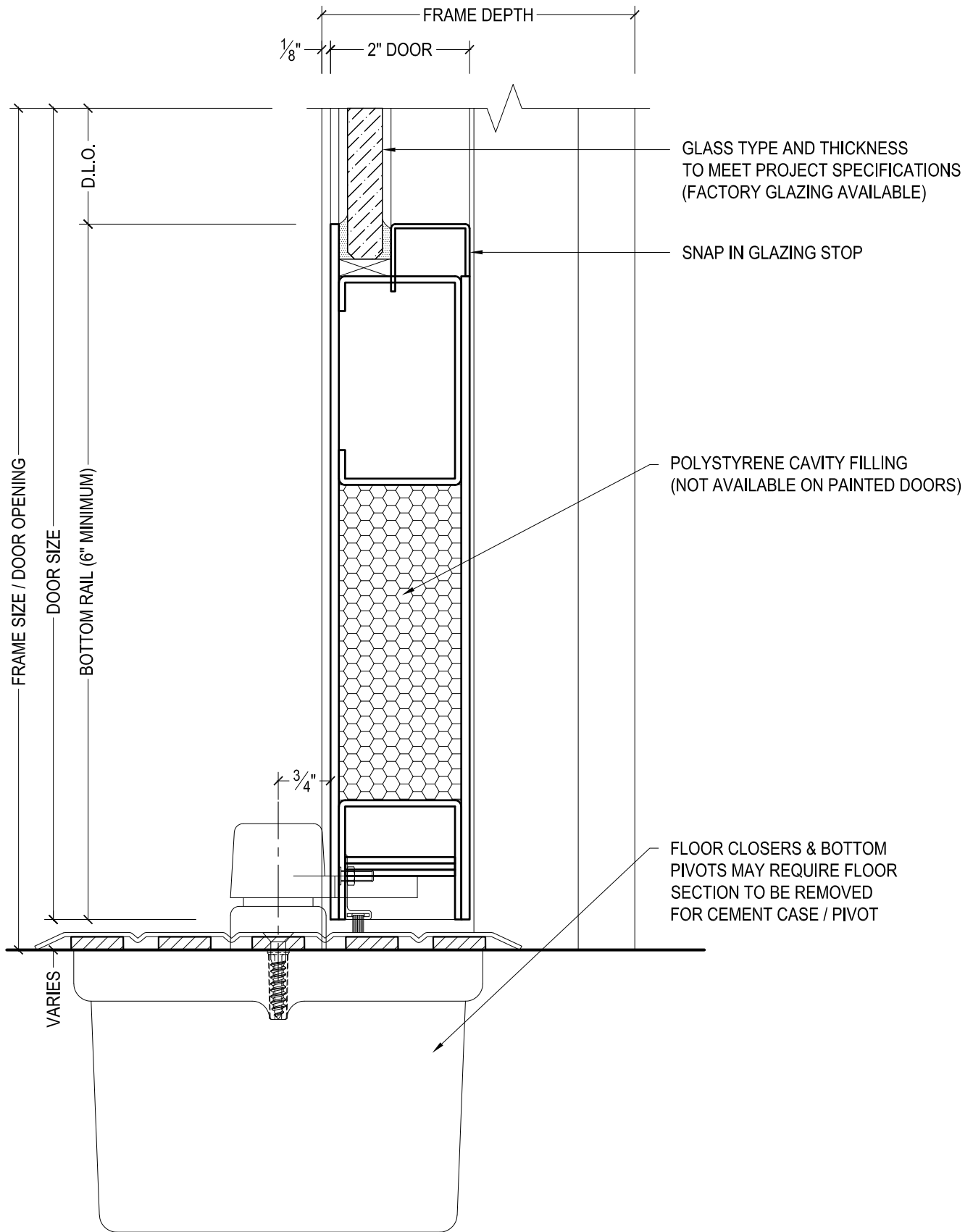
825 ALLEN ST • JAMESTOWN, NY 14701 • (716) 664-3811 • WWW.DAWSONDOORS.COM

DRAWN BY:	AG	DRAWING DATE:	10/23/19
SERIES #:	001-OP	DRAWING #:	10PTRFS50
DESCRIPTION:	HEADER / TOP RAIL - RUGGED SERIES OFFSET PIVOTED DOORS		



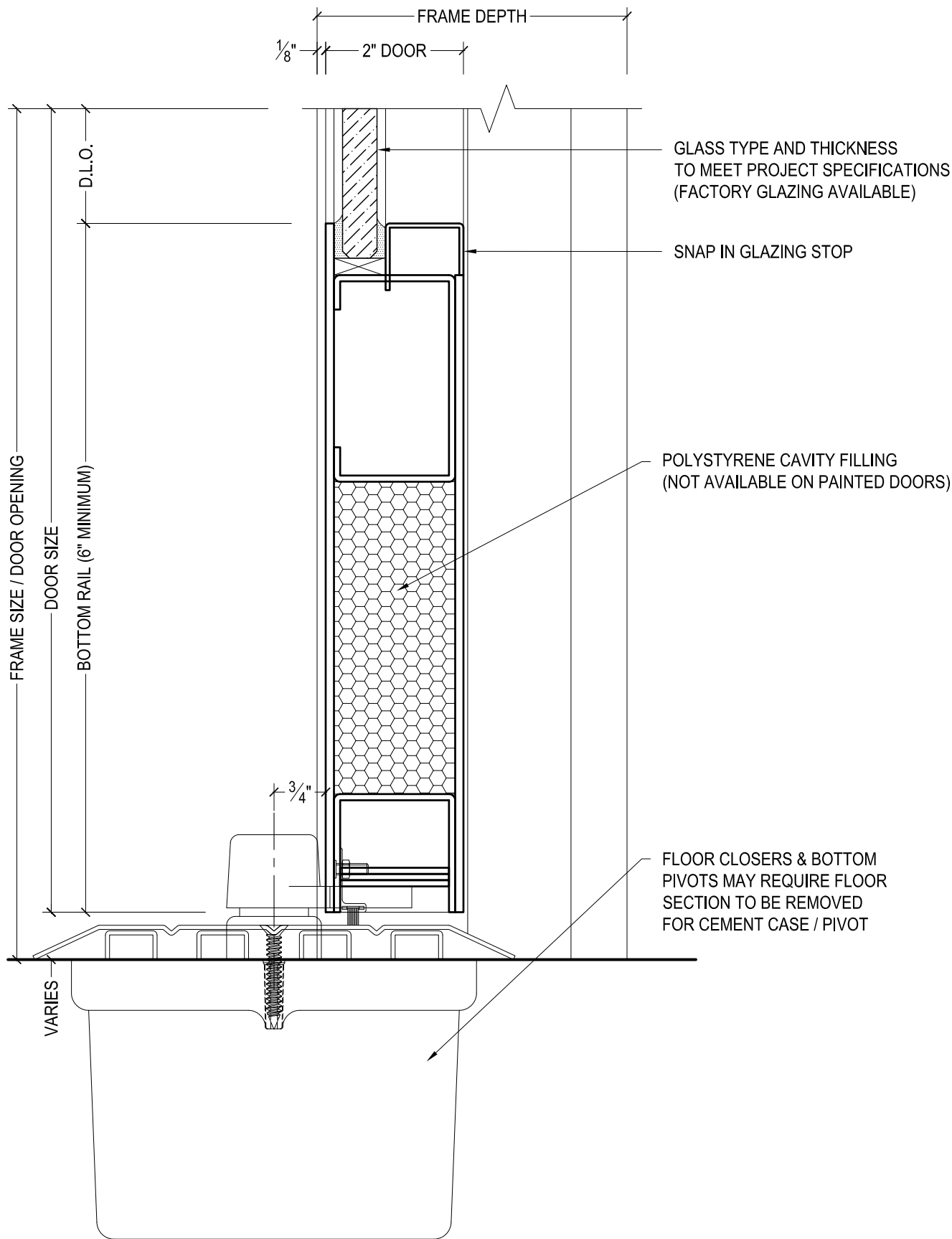
825 ALLEN ST • JAMESTOWN, NY 14701 • (716) 664-3811 • WWW.DAWSONDOORS.COM

DRAWN BY:	AG	DRAWING DATE:	10/23/19
SERIES #:	001-OP	DRAWING #:	10CBNFS50
DESCRIPTION:	BOTTOM RAIL / FLOOR CLOSER - RUGGED SERIES OFFSET PIVOTED DOORS - NO THRESHOLD -		



825 ALLEN ST • JAMESTOWN, NY 14701 • (716) 664-3811 • WWW.DAWSONDOORS.COM

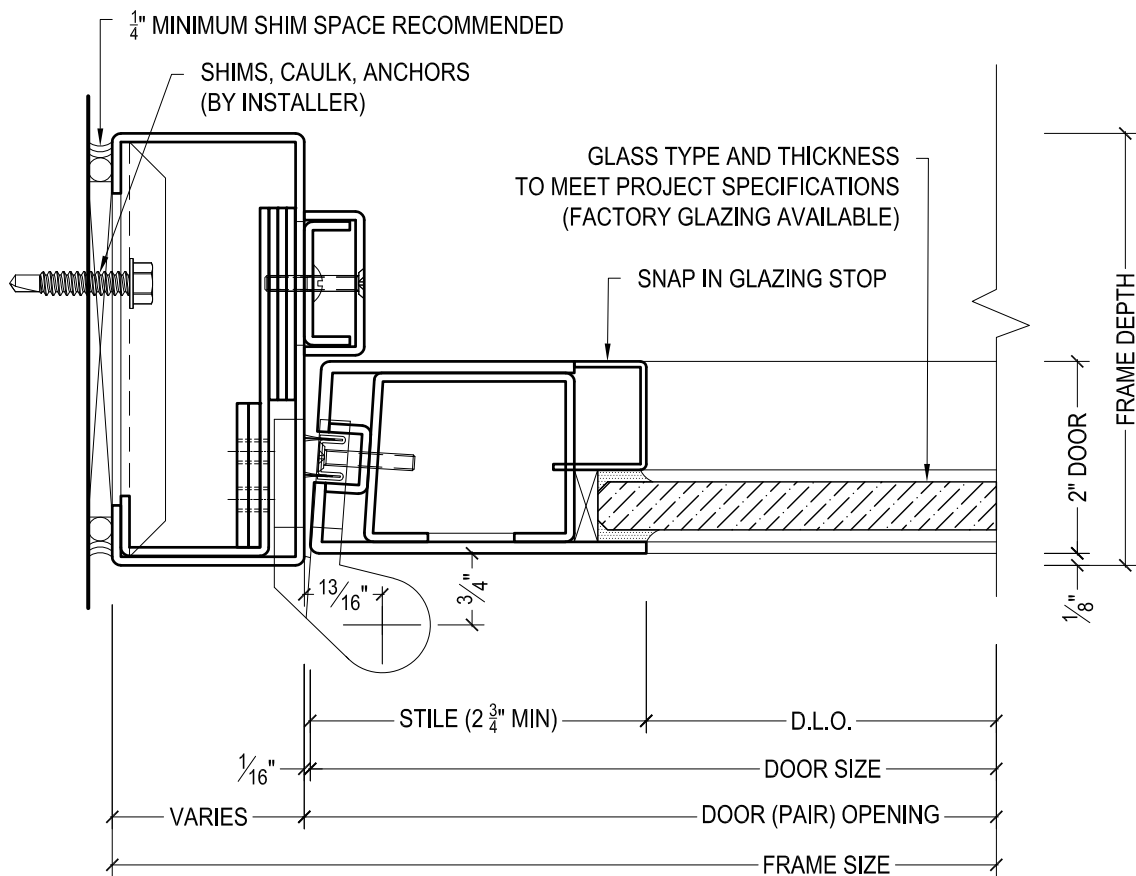
DRAWN BY:	AG	DRAWING DATE:	10/23/19
SERIES #:	001-OP	DRAWING #:	10CBQFS50
DESCRIPTION:	BOTTOM RAIL / FLOOR CLOSER - RUGGED SERIES OFFSET PIVOTED DOORS - 1/4" THRESHOLD-		



DAWSON DOORS

825 ALLEN ST • JAMESTOWN, NY 14701 • (716) 664-3811 • WWW.DAWSONDOORS.COM

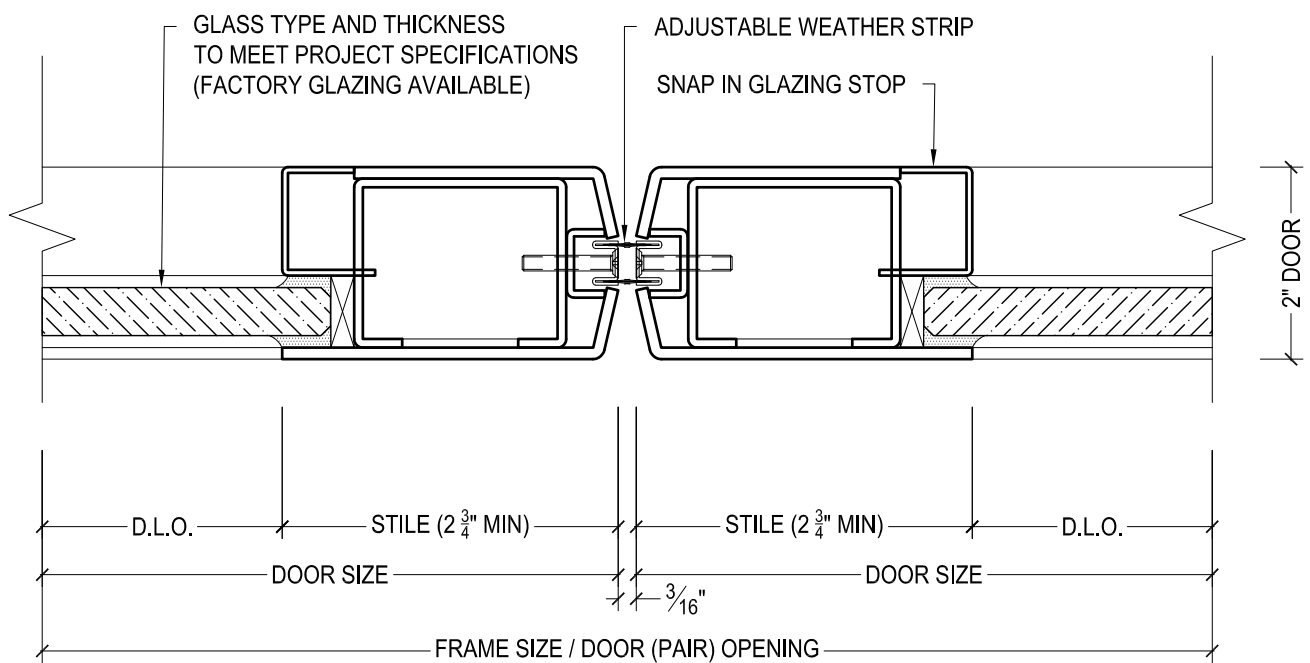
DRAWN BY:	AG	DRAWING DATE:	10/23/19
SERIES #:	001-OP	DRAWING #:	10CBHFS50
DESCRIPTION:	BOTTOM RAIL / FLOOR CLOSER - RUGGED SERIES OFFSET PIVOTED DOORS - 1/2" THRESHOLD -		



DAWSON DOORS

825 ALLEN ST • JAMESTOWN, NY 14701 • (716) 664-3811 • WWW.DAWSONDOORS.COM

DRAWN BY:	AG	DRAWING DATE:	10/23/19
SERIES #:	001-OP	DRAWING #:	1OPPSFS50
DESCRIPTION:	JAMB / PIVOT STILE - RUGGED SERIES OFFSET PIVOTED DOORS		



825 ALLEN ST • JAMESTOWN, NY 14701 • (716) 664-3811 • WWW.DAWSONDOORS.COM

DRAWN BY:

AG

DRAWING DATE:

10/23/19

SERIES #:

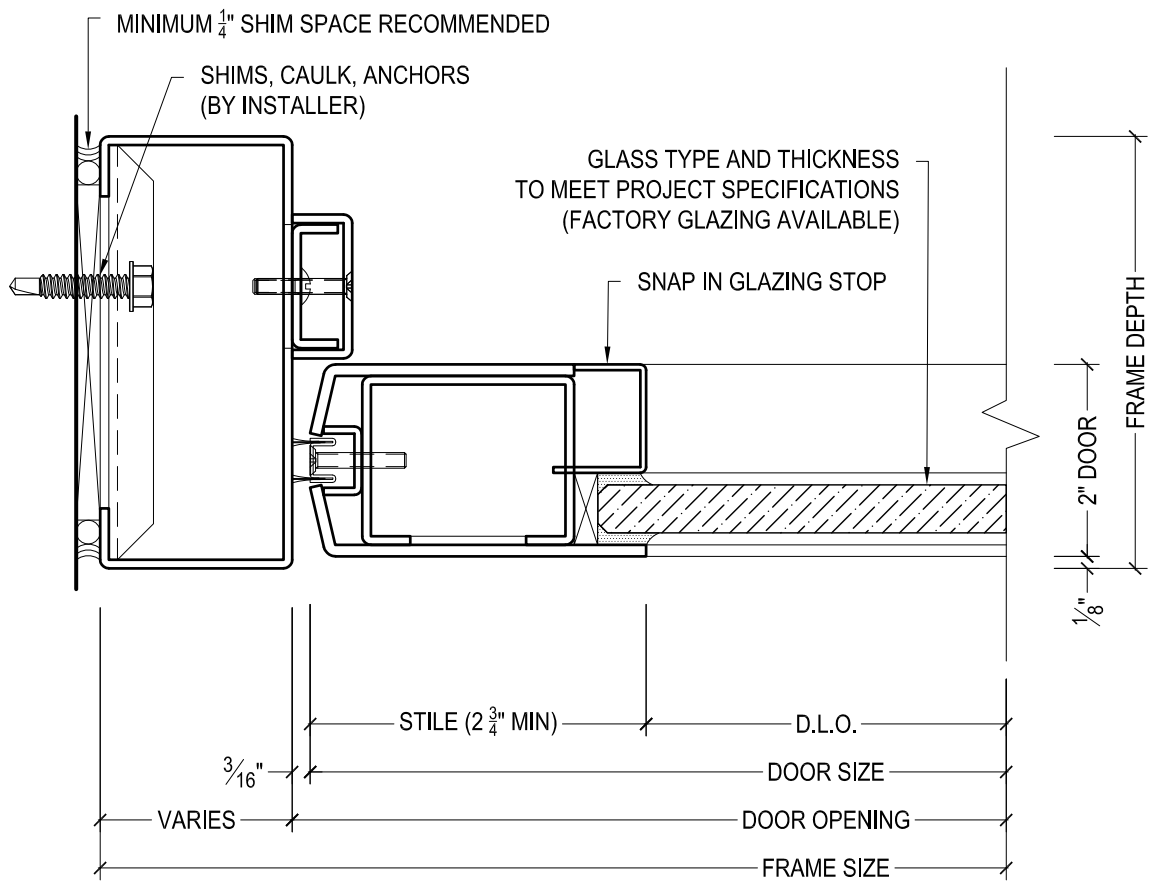
001-OP

DRAWING #:

10PMSFS50

DESCRIPTION:

MEETING STILES - RUGGED SERIES OFFSET PIVOTED DOORS



DAWSON DOORS

825 ALLEN ST • JAMESTOWN, NY 14701 • (716) 664-3811 • WWW.DAWSONDOORS.COM

DRAWN BY:

AG

DRAWING DATE:

10/23/19

SERIES #:

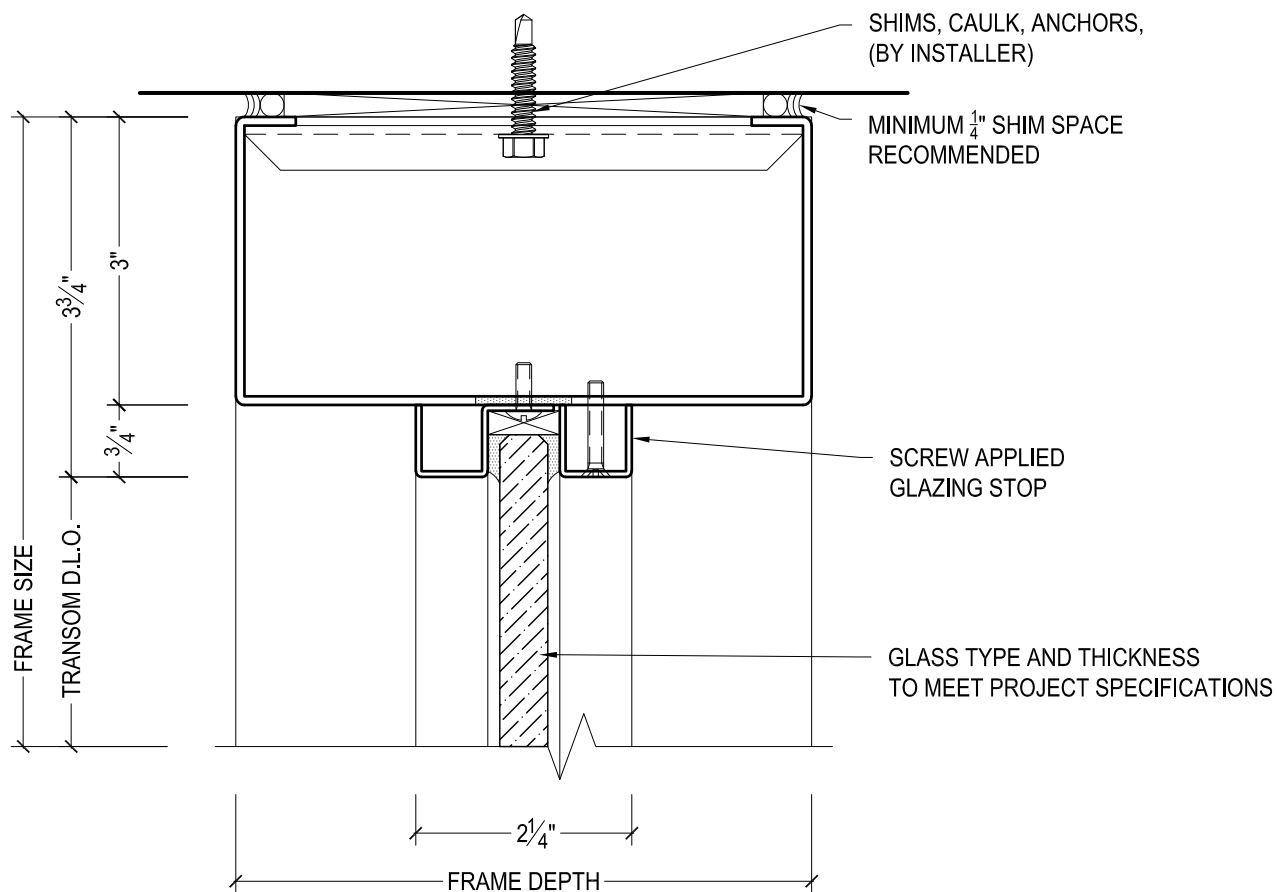
001-OP

DRAWING #:

1OPLSFS50

DESCRIPTION:

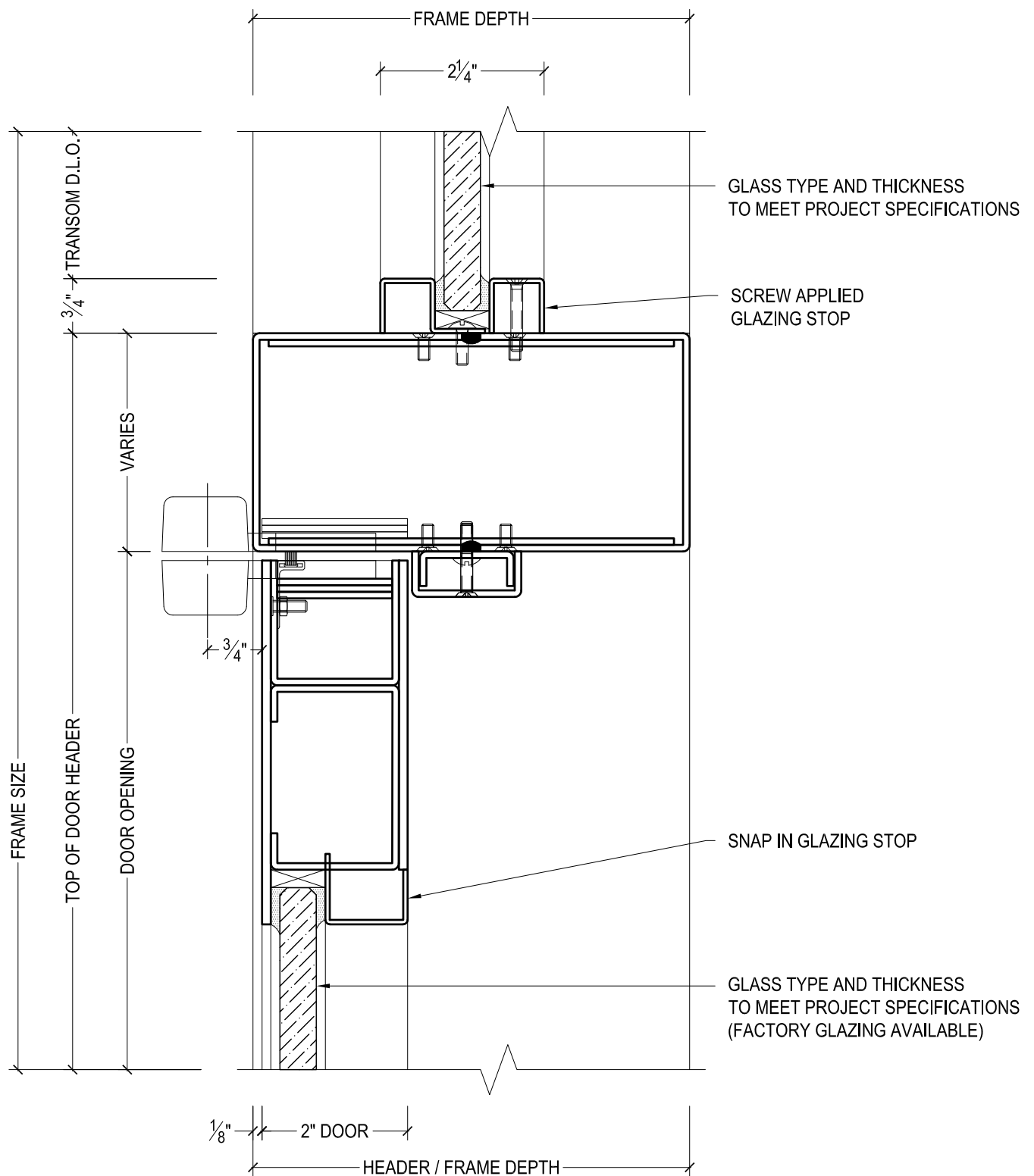
LOCK JAMB / STILE - RUGGED SERIES OFFSET PIVOTED
DOORS



DAWSON DOORS

825 ALLEN ST • JAMESTOWN, NY 14701 • (716) 664-3811 • WWW.DAWSONDOORS.COM

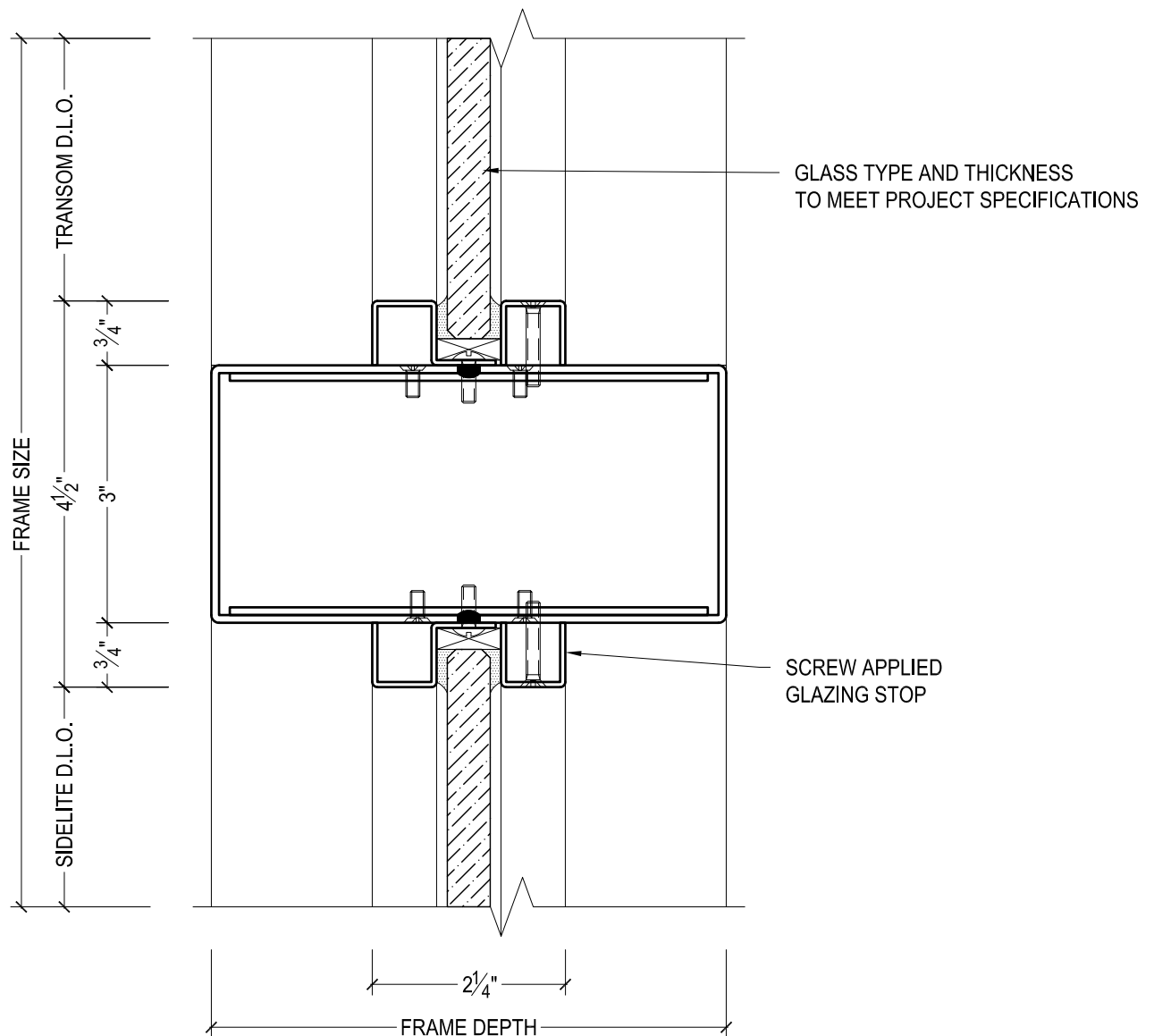
DRAWN BY:	AG	DRAWING DATE:	10/23/19
SERIES #:	001-OP	DRAWING #:	FXXTHAS50
DESCRIPTION:	TRANSOM HEADER WITH APPLIED STOPS		



DAWSON DOORS

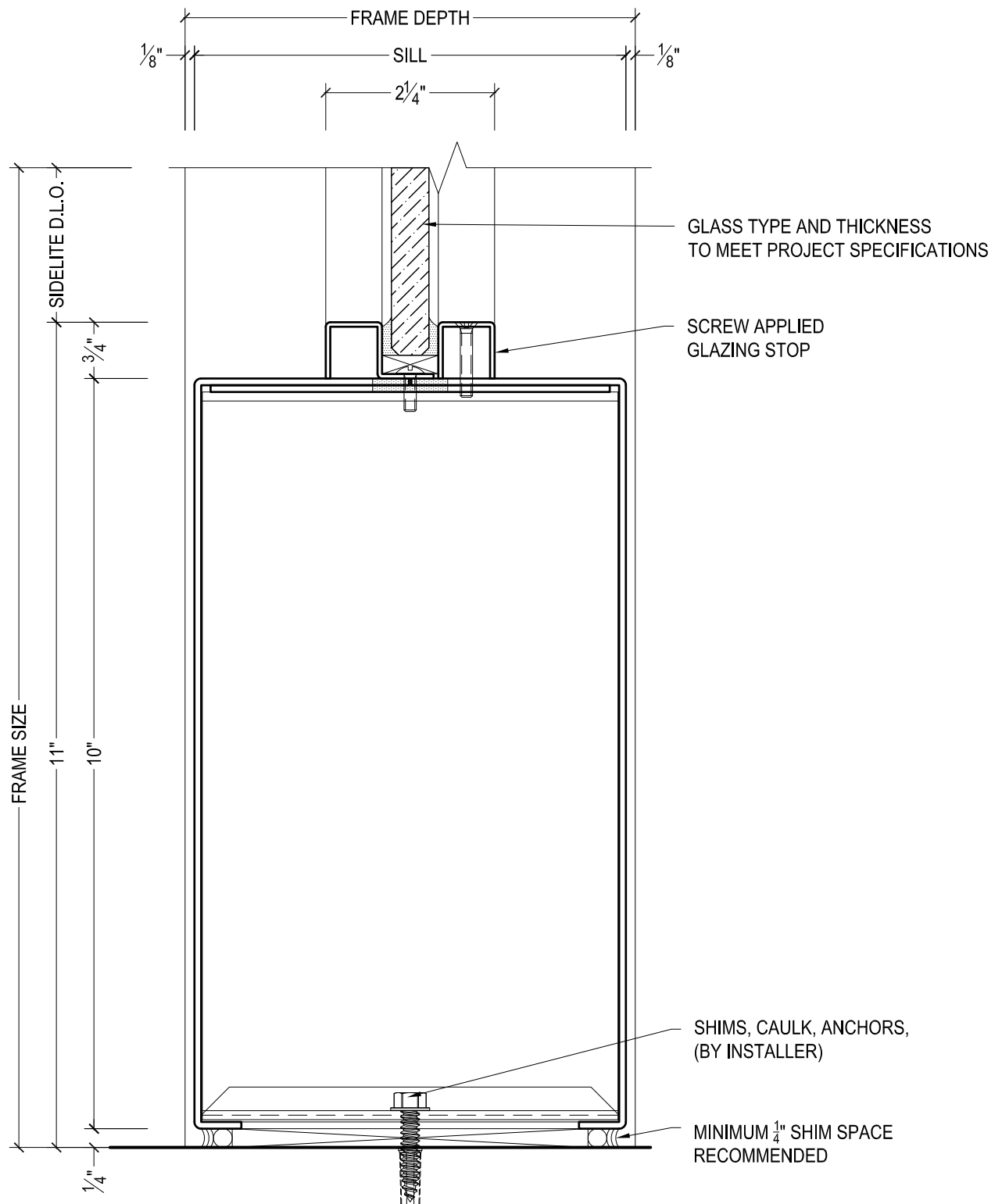
825 ALLEN ST • JAMESTOWN, NY 14701 • (716) 664-3811 • WWW.DAWSONDOORS.COM

DRAWN BY:	AG	DRAWING DATE:	10/23/19
SERIES #:	001-OP	DRAWING #:	10PTHFS50
DESCRIPTION:	HEADER / TOP RAIL - RUGGED SERIES OFFSET PIVOTED DOORS WITH TRANSOM ABOVE WITH APPLIED STOPS		



825 ALLEN ST • JAMESTOWN, NY 14701 • (716) 664-3811 • WWW.DAWSONDOORS.COM

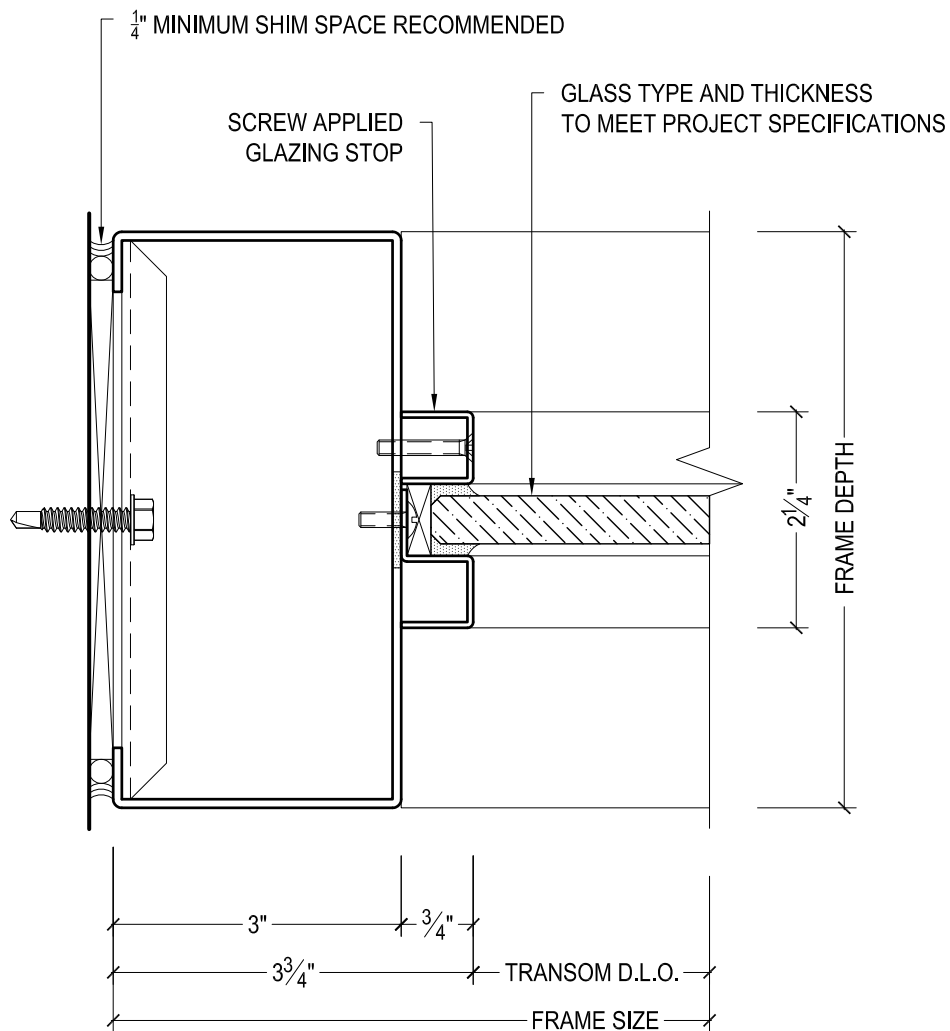
DRAWN BY:	AG	DRAWING DATE:	10/23/19
SERIES #:	001-OP	DRAWING #:	FXXTZAS50
DESCRIPTION:	SIDELITE BELOW & TRANSOM ABOVE WITH APPLIED STOPS		



DAWSON DOORS

825 ALLEN ST • JAMESTOWN, NY 14701 • (716) 664-3811 • WWW.DAWSONDOORS.COM

DRAWN BY:	AG	DRAWING DATE:	10/23/19
SERIES #:	001-OP	DRAWING #:	FXXSSAS50
DESCRIPTION:	SIDELITE SILL WITH APPLIED STOPS		

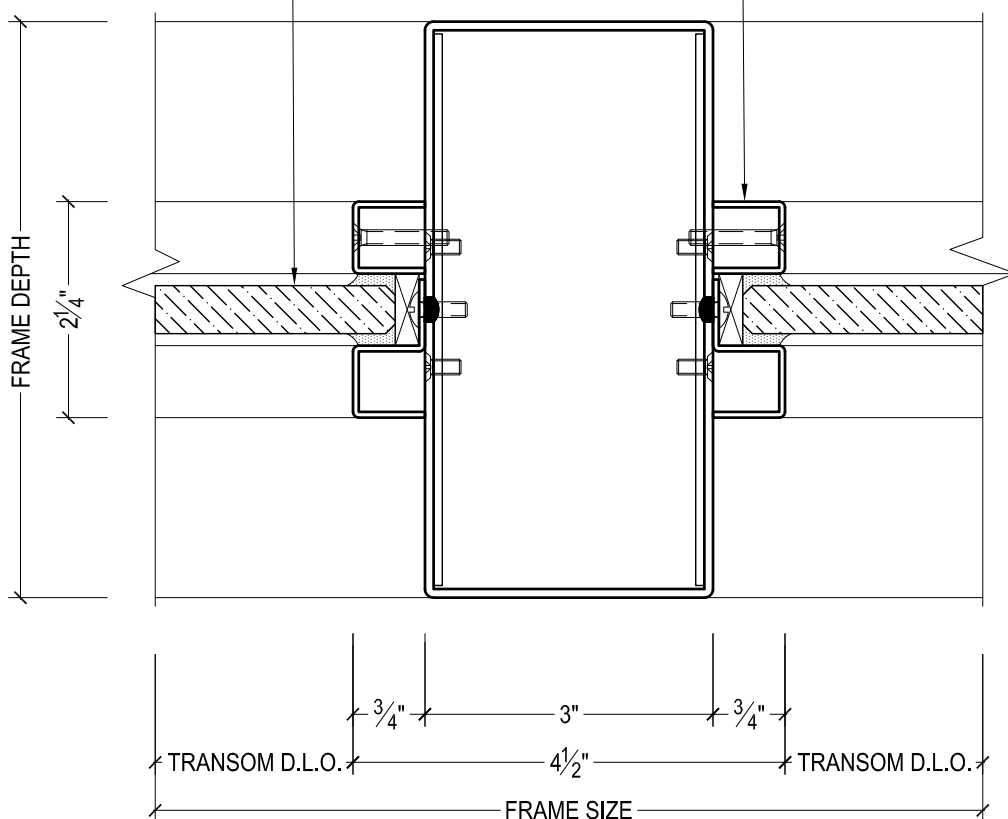


825 ALLEN ST • JAMESTOWN, NY 14701 • (716) 664-3811 • WWW.DAWSONDOORS.COM

DRAWN BY:	AG	DRAWING DATE:	10/23/19
SERIES #:	001-OP	DRAWING #:	FXXTWAS50
DESCRIPTION:	TRANSOM JAMB WITH APPLIED STOPS		

GLASS TYPE AND THICKNESS
TO MEET PROJECT SPECIFICATIONS

SCREW APPLIED
GLAZING STOP



DAWSON DOORS

825 ALLEN ST • JAMESTOWN, NY 14701 • (716) 664-3811 • WWW.DAWSONDOORS.COM

DRAWN BY:

AG

DRAWING DATE:

10/23/19

SERIES #:

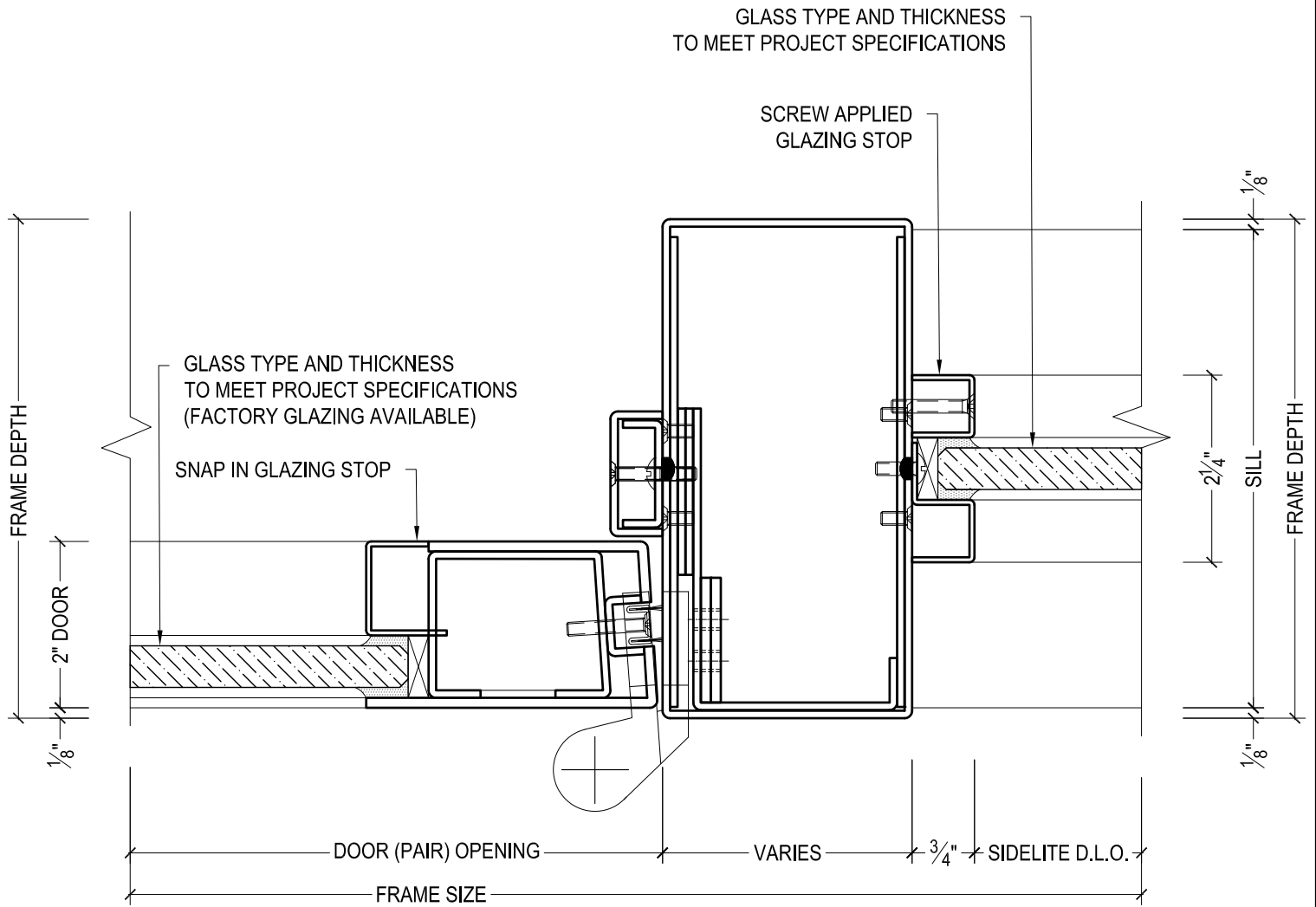
001-OP

DRAWING #:

FXXTVAS50

DESCRIPTION:

TRANSOM MULLION WITH APPLIED STOPS



825 ALLEN ST • JAMESTOWN, NY 14701 • (716) 664-3811 • WWW.DAWSONDOORS.COM

DRAWN BY:	AG	DRAWING DATE:	10/23/19
SERIES #:	001-OP	DRAWING #:	1OPSMAS50
DESCRIPTION:	JAMB / PIVOT STILE / SIDELITE MULLION - RUGGED SERIES OFFSET PIVOTED DOORS WITH FIXED FLAT GLAZING. JAMB TREATED AS SIDELITE MULLION		