

1. MATERIALS & FINISHES

- A. STAINLESS STEEL, BRASS, AND BRONZE ARE AVAILABLE IN #6 SATIN, #4 SATIN, OR NON-DIRECTIONAL (ANGEL HAIR) FINISH. DAWSON DOES NOT PROVIDE LACQUERED FINISH ON BRASS OR BRONZE PRODUCTS. WET PAINTED OR POWDER COATED DOORS WILL BE FABRICATED FROM GALVANNEALED STEEL. CONSULT FACTORY FOR CUSTOM FINISHES.
- B. STAINLESS STEEL AND PAINTED GALVANNEALED STEEL DESIGNER SERIES DOORS TO BE FABRICATED WITH 13 GA MATERIAL AND 13 GA INTERNAL COMPONENTS. GLASS STOPS TO BE FABRICATED FROM 16 GA MATERIAL.
- C. STAINLESS STEEL AND PAINTED GALVANNEALED STEEL FRAMES AND DOOR STOPS TO BE FABRICATED FROM 13 GA MATERIAL. SPACER JAMBS ON EXPOSED HIINGE TUBE OPENINGS AND TRANSOM AND SIDELITE GLASS STOPS TO BE FABRICATED FROM 16 GA MATERIAL.
- D. BRASS AND BRONZE FRAMES AND DOOR STOPS TO BE FABRICATED FROM .090" MATERIAL. SPACER JAMBS ON EXPOSED HINGE TUBE OPENINGS AND TRANSOM AND SIDELITE GLASS STOPS TO BE FABRICATED FROM .060" MATERIAL.
- E. STAINLESS STEEL AND PAINTED GALVANNEALED STEEL HINGE TUBES ARE CLAD IN 16 GA MATERIAL. NOTE THAT BALANCED ARMS ARE ONLY AVAILABLE IN STAINLESS STEEL OR BRASS FINISHES.
- F. BRASS AND BRONZE EXPOSED HINGE TUBES ARE CLAD IN .060" MATERIAL. NOTE THAT BALANCED ARMS ARE ONLY AVAILABLE IN STAINLESS STEEL OR BRASS FINISHES.

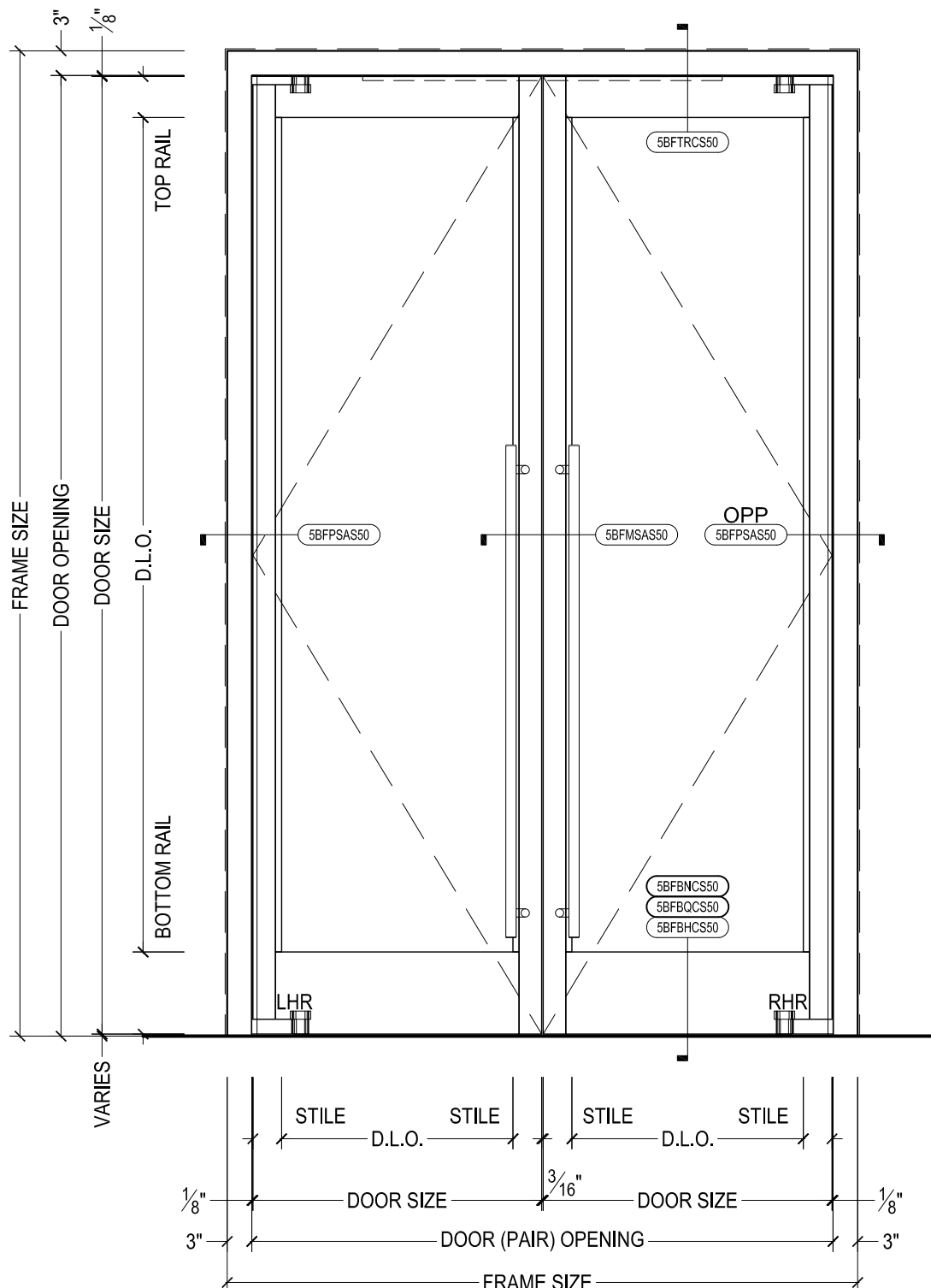
2. STANDARD DIMENSIONS

- A. BALANCED DOORS HAVE A MINIMUM TOP RAIL OF $4\frac{1}{2}$ ". STILE AND RAIL DOORS HAVE A MINIMUM STILE WIDTH OF $2\frac{3}{4}$ " INCLUDING GLASS STOPS. ALL DOORS HAVE A STANDARD BOTTOM RAIL DIMENSION OF 10" TO MEET ADA CODE. MINIMUM BOTTOM RAIL OF 6" WILL NOT MEET ADA. MINIMUM DIMENSIONS SUBJECT SUBJECT TO CHANGE BASED ON HARDWARE - CONSULT FACTORY.
- B. FRAME PROFILE STANDARD DIMENSIONS ARE 3" FACE x 6" DEPTH. STANDARD HEADER HEIGHT (FACE) FOR AUTO OPERATED BALANCED DOORS IS 6". CONSULT FACTORY FOR CUSTOM SIZES.
- C. SEE GLAZING DETAILS FOR STANDARD GLASS POCKET AND STANDARD GLASS BITE. CONSULT FACTORY FOR CUSTOM GLASS POCKET OR CUSTOM GLASS BITE.
- D. BALANCED DOOR UNDERCUT IS AVAILABLE AS $\frac{1}{4}$ ", $\frac{1}{2}$ ", OR $\frac{3}{4}$ ". UNDERCUT IS DRIVEN BY THRESHOLD HEIGHT.
- E. HORIZONTAL DOOR STOPS TO STOP SHORT ON PIVOT SIDE FOR SWING CLEARANCE. DOOR STOPS FABRICATED $\frac{5}{8}$ " HIGH STANDARD VARYING WITH HARDWARE REQUIREMENTS. WIDTH VARIES AS REQUIRED. CONSULT FACTORY FOR CUSTOM SIZES AND PROFILES.
- F. MINIMUM BALANCED DOOR WIDTH TO MEET ADA MINIMUM OF 32" CLEAR OPENING IS $35\frac{3}{16}$ " PER PAIR OF DOORS & 36" FOR SINGLE DOORS. MINIMUM AUTO OPERATED BALANCED DOOR WIDTH IS 36" DUE TO HARDWARE LIMITATIONS.



825 ALLEN ST • JAMESTOWN, NY 14701 • (716) 664-3811 • WWW.DAWSONDOORS.COM

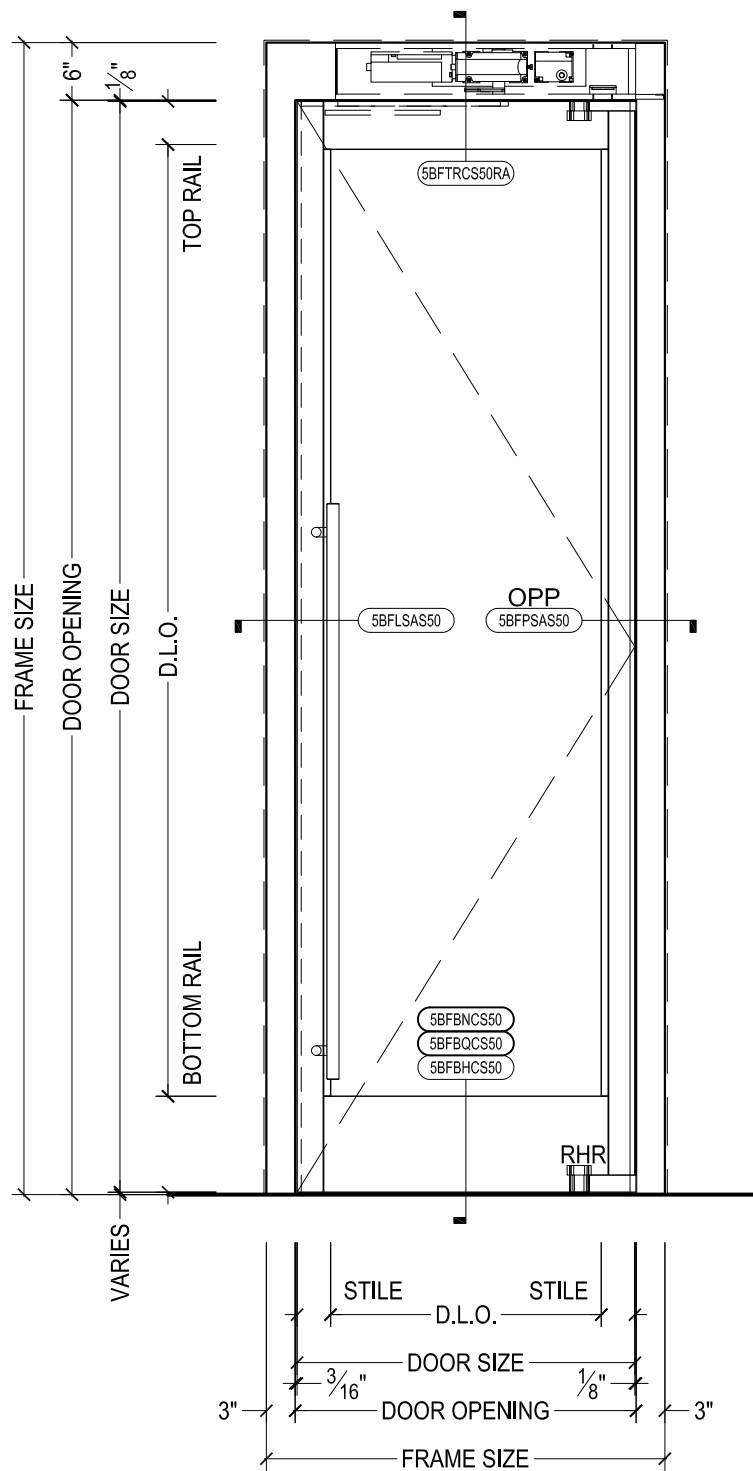
DRAWN BY:	AG	DRAWING DATE:	12/2/19
SERIES #:	005-BAL	DRAWING #:	NOTES 1
DESCRIPTION:	GENERAL NOTES FOR 005 DESIGNER SERIES DOORS WITH BALANCED HARDWARE		



DAWSON DOORS

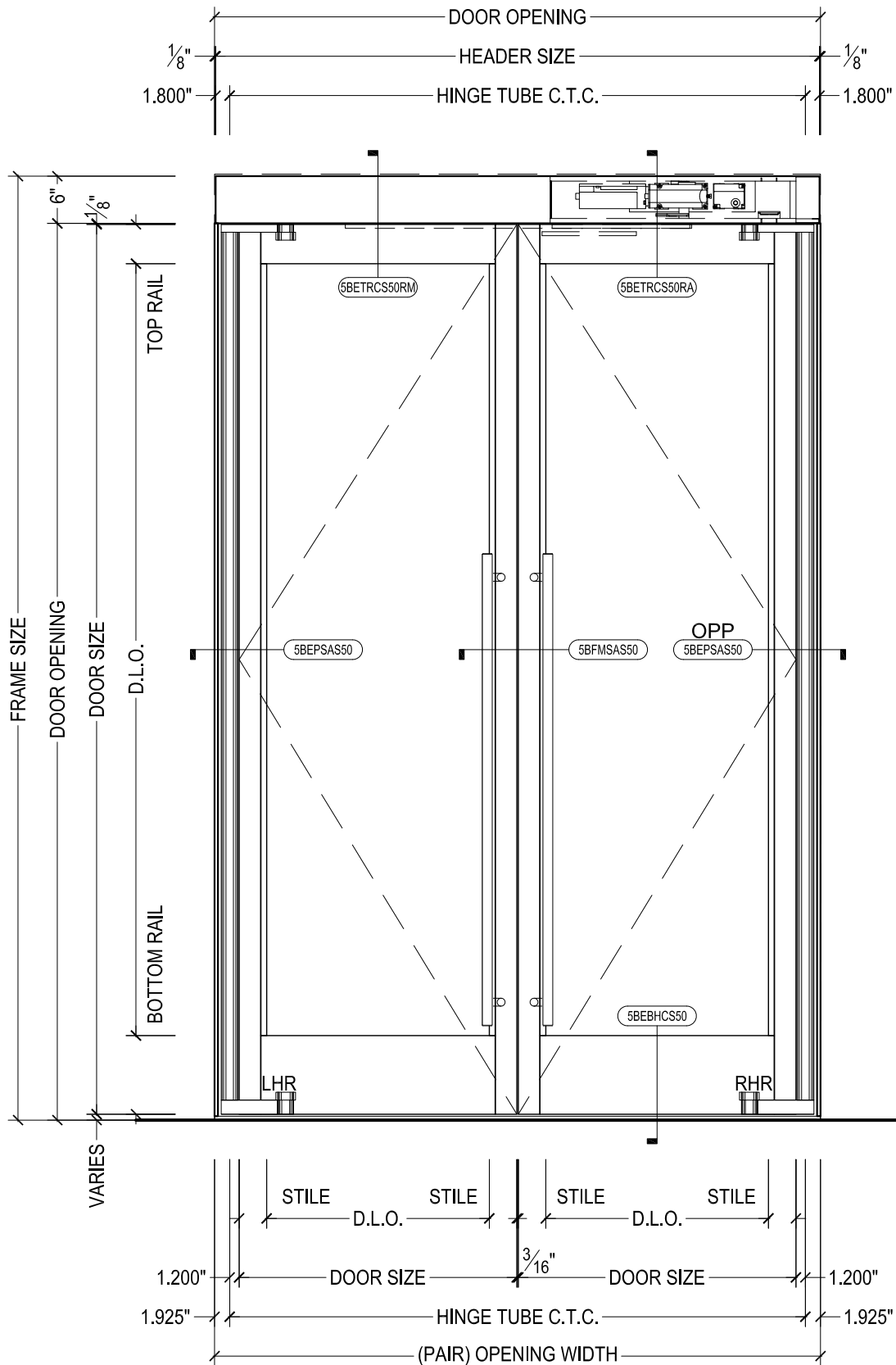
825 ALLEN ST • JAMESTOWN, NY 14701 • (716) 664-3811 • WWW.DAWSONDOORS.COM

DRAWN BY:	AG	DRAWING DATE:	12/2/19
SERIES #:	005-BAL	DRAWING #:	EL-MAN-PAIR
DESCRIPTION:	ELEVATION - STILE AND RAIL DESIGNER SERIES BALANCED DOORS		



825 ALLEN ST • JAMESTOWN, NY 14701 • (716) 664-3811 • WWW.DAWSONDOORS.COM

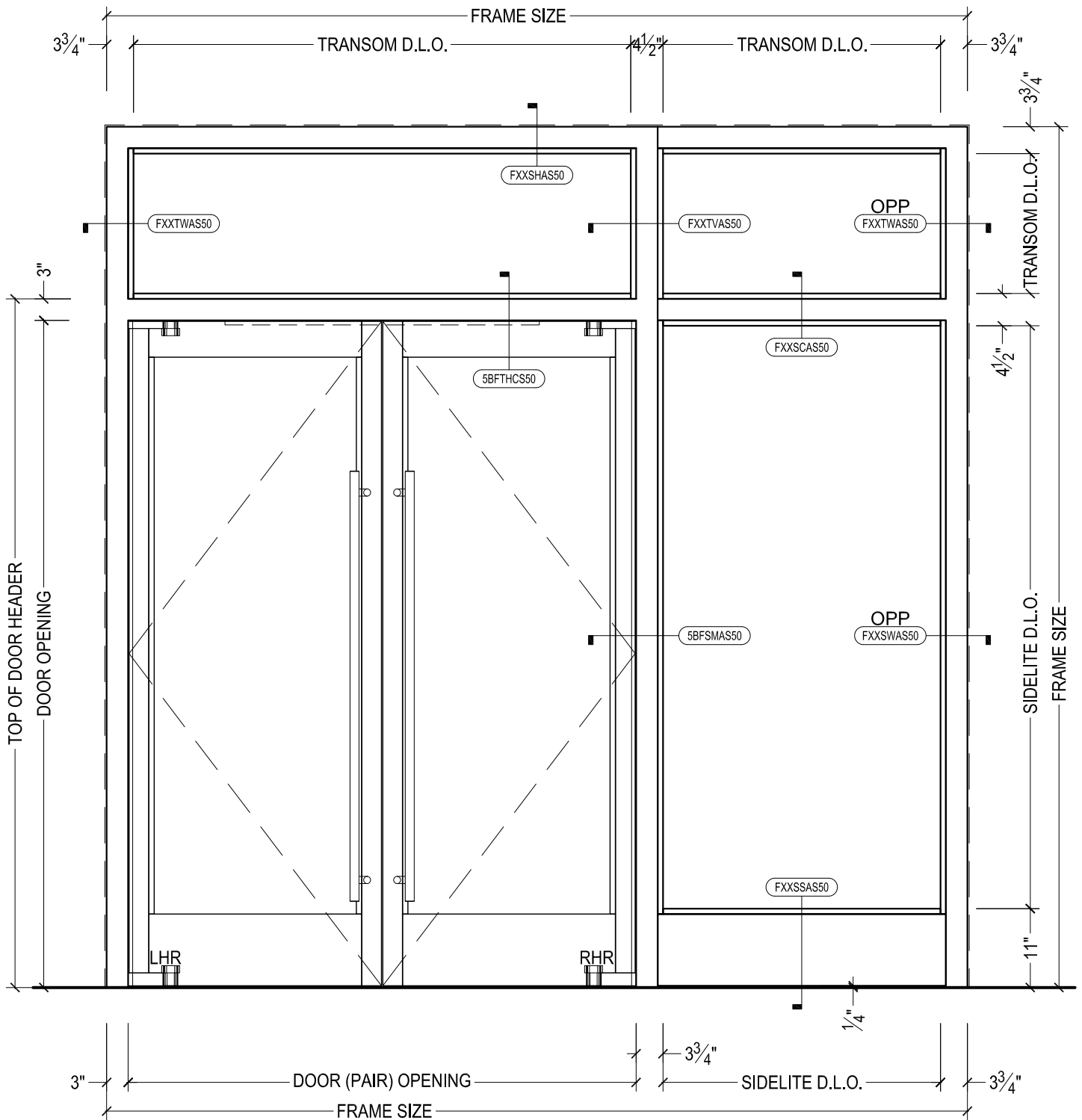
DRAWN BY:	AG	DRAWING DATE:	12/2/19
SERIES #:	005-BAL	DRAWING #:	EL-AUTO-SIN
DESCRIPTION:	ELEVATION - STILE AND RAIL DESIGNER SERIES BALANCED DOOR WITH RECORD AUTO OPERATOR		



DAWSON DOORS

825 ALLEN ST • JAMESTOWN, NY 14701 • (716) 664-3811 • WWW.DAWSONDOORS.COM

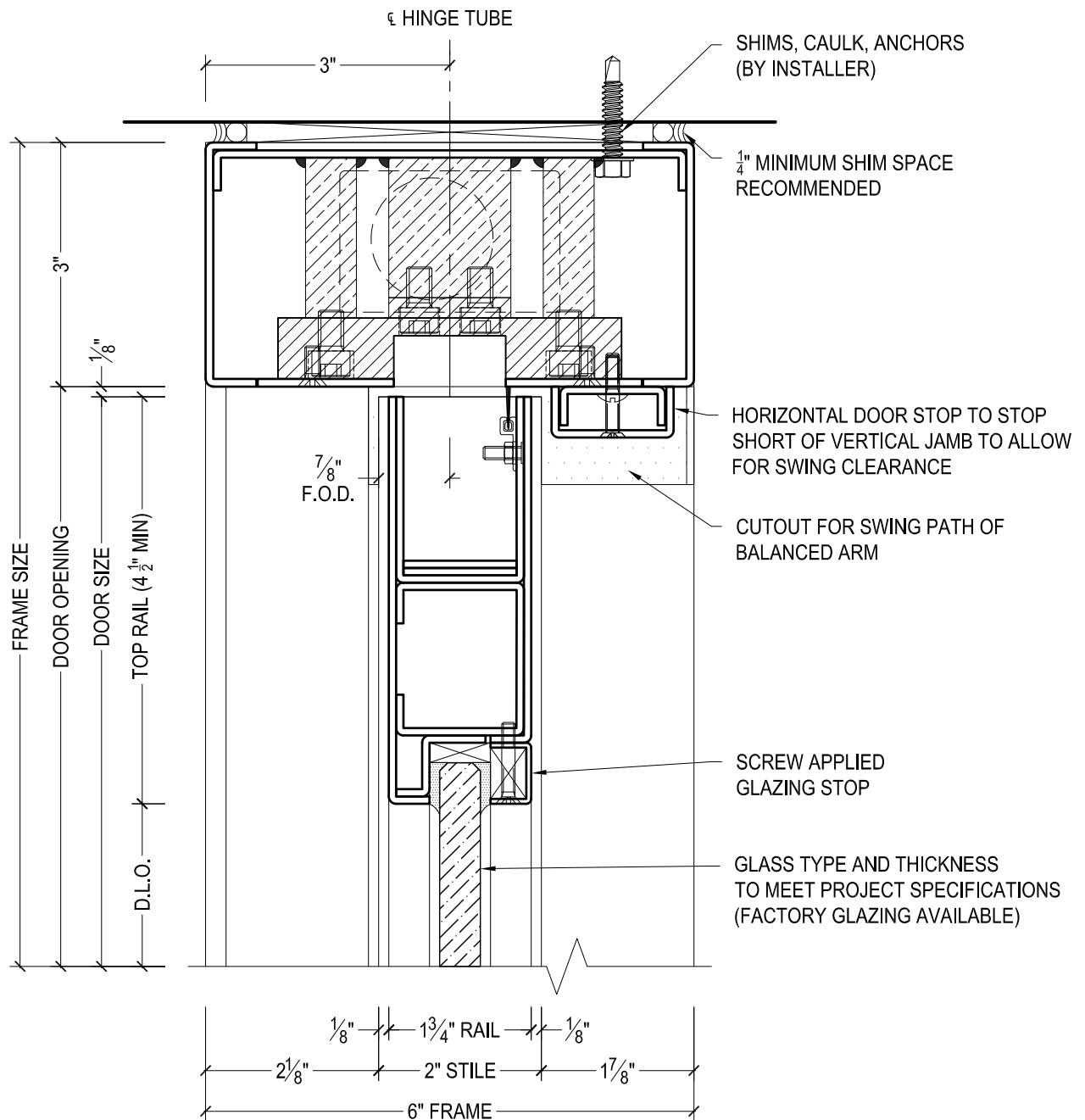
DRAWN BY:	AG	DRAWING DATE:	12/2/19
SERIES #:	005-BAL	DRAWING #:	EL-EHT-PAIR
DESCRIPTION:	ELEVATION - STILE AND RAIL DESIGNER SERIES BALANCED DOORS WITH RECORD AUTO OPERATOR AND EXPOSED HINGE TUBES		



DAWSON DOORS

825 ALLEN ST • JAMESTOWN, NY 14701 • (716) 664-3811 • WWW.DAWSONDOORS.COM

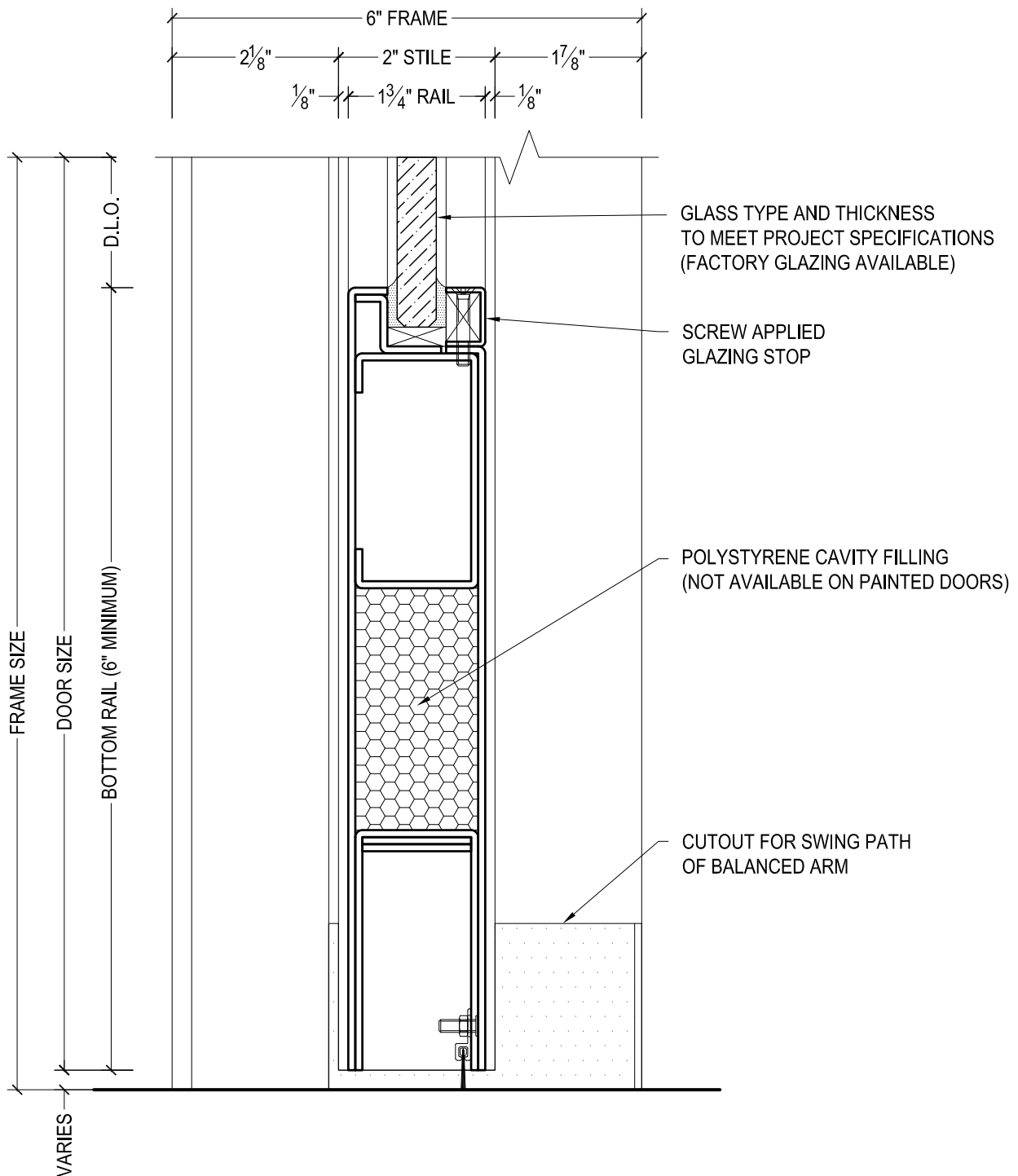
DRAWN BY:	AG	DRAWING DATE:	12/2/19
SERIES #:	005-BAL	DRAWING #:	EL-BAL-SLT
DESCRIPTION:	ELEVATION - STILE AND RAIL DESIGNER SERIES BALANCED DOORS WITH FRAME SIDELITE AND TRANSOM		



DAWSON DOORS

825 ALLEN ST • JAMESTOWN, NY 14701 • (716) 664-3811 • WWW.DAWSONDOORS.COM

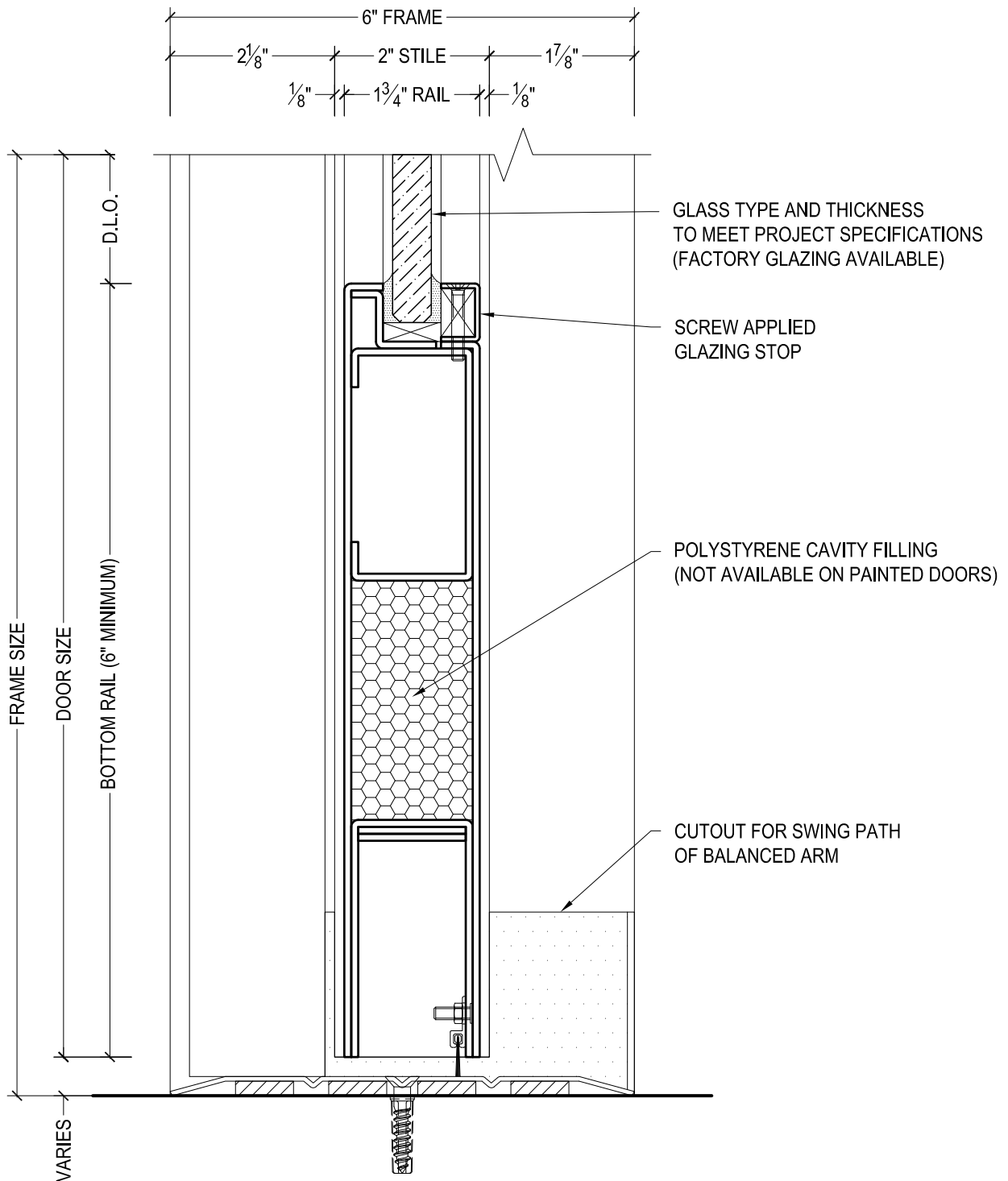
DRAWN BY:	AG	DRAWING DATE:	12/2/19
SERIES #:	005-BAL	DRAWING #:	5BFTRCS50
DESCRIPTION:	HEADER / TOP RAIL - DESIGNER SERIES BALANCED DOORS		



DAWSON DOORS

825 ALLEN ST • JAMESTOWN, NY 14701 • (716) 664-3811 • WWW.DAWSONDOORS.COM

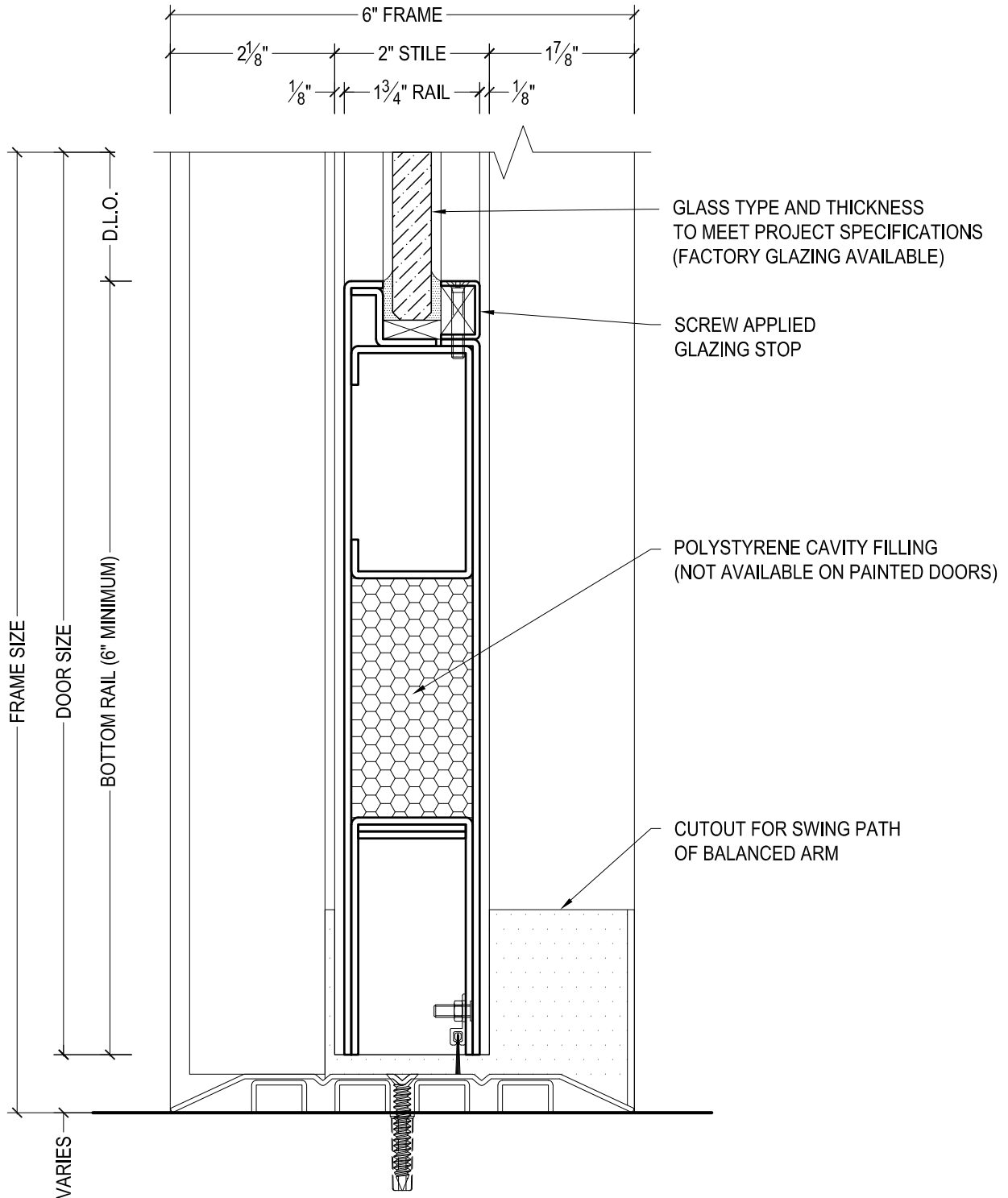
DRAWN BY:	AG	DRAWING DATE:	12/2/19
SERIES #:	005-BAL	DRAWING #:	5BFBNCS50
DESCRIPTION:	BOTTOM RAIL - DESIGNER SERIES BALANCED DOORS - NO THRESHOLD -		



DAWSON DOORS

825 ALLEN ST • JAMESTOWN, NY 14701 • (716) 664-3811 • WWW.DAWSONDOORS.COM

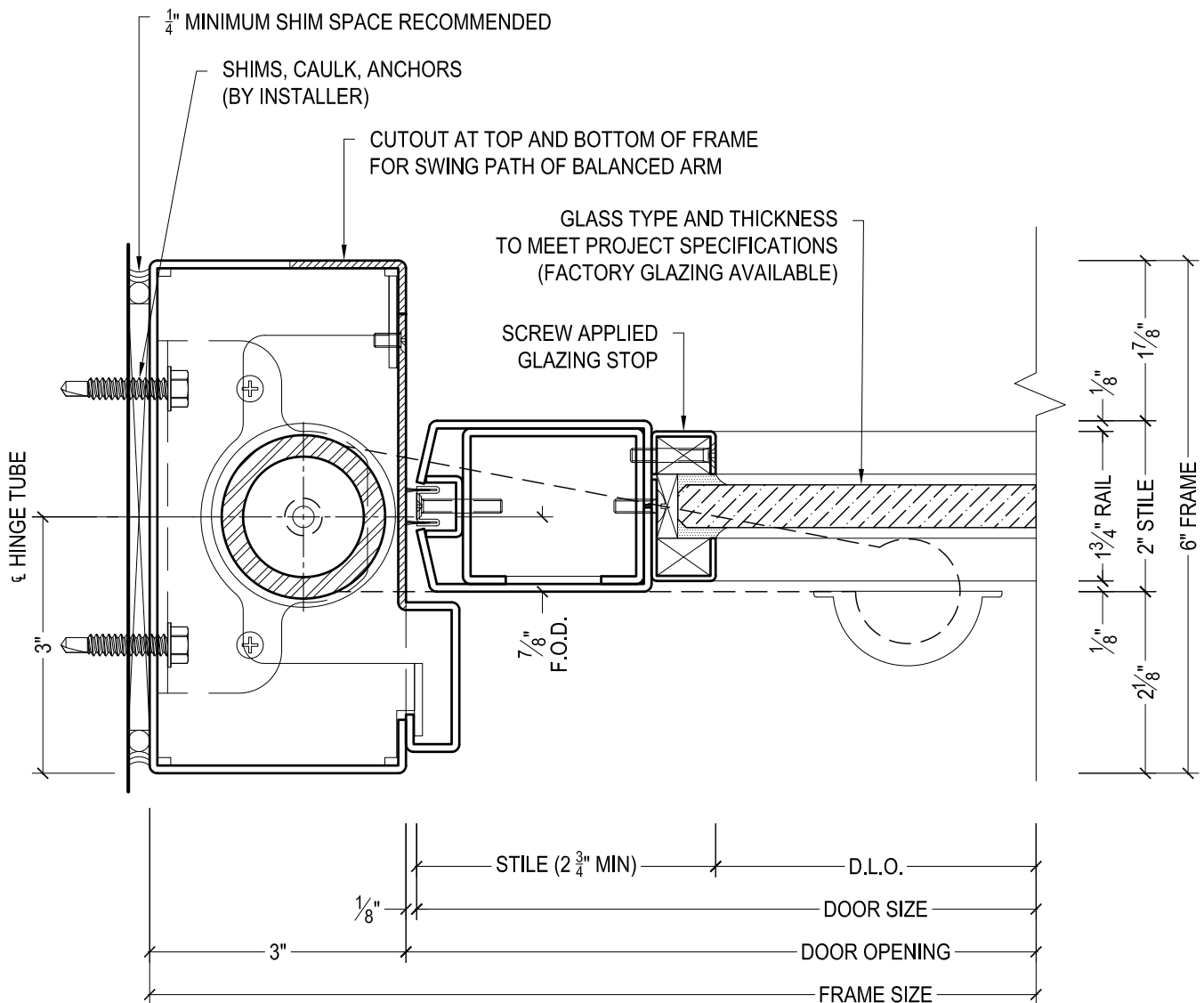
DRAWN BY:	AG	DRAWING DATE:	12/2/19
SERIES #:	005-BAL	DRAWING #:	5BFBQCS50
DESCRIPTION:	BOTTOM RAIL - DESIGNER SERIES BALANCED DOORS - 1/4" THRESHOLD -		



DAWSON DOORS

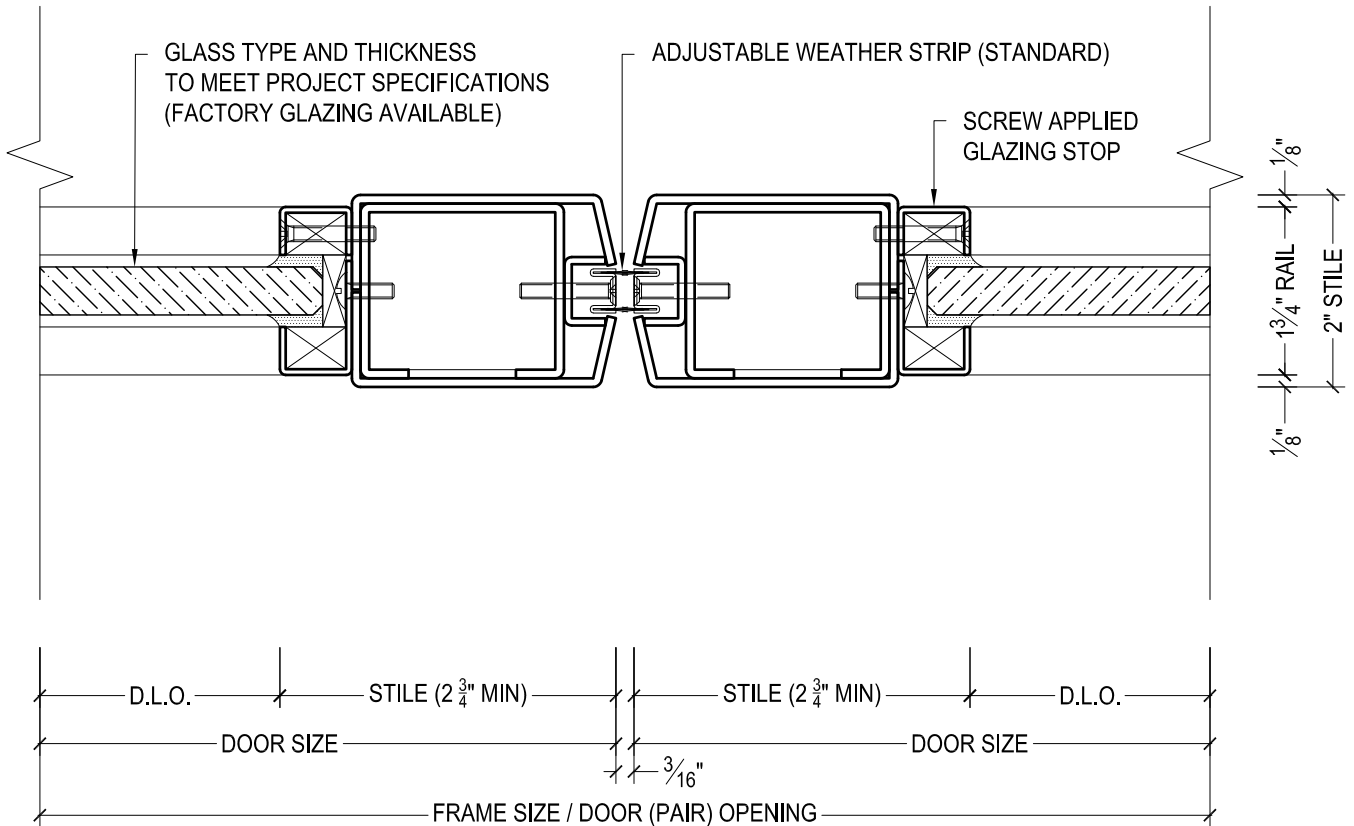
825 ALLEN ST • JAMESTOWN, NY 14701 • (716) 664-3811 • WWW.DAWSONDOORS.COM

DRAWN BY:	AG	DRAWING DATE:	12/2/19
SERIES #:	005-BAL	DRAWING #:	5BFBHCS50
DESCRIPTION:	BOTTOM RAIL - DESIGNER SERIES BALANCED DOORS - 1/2" THRESHOLD -		

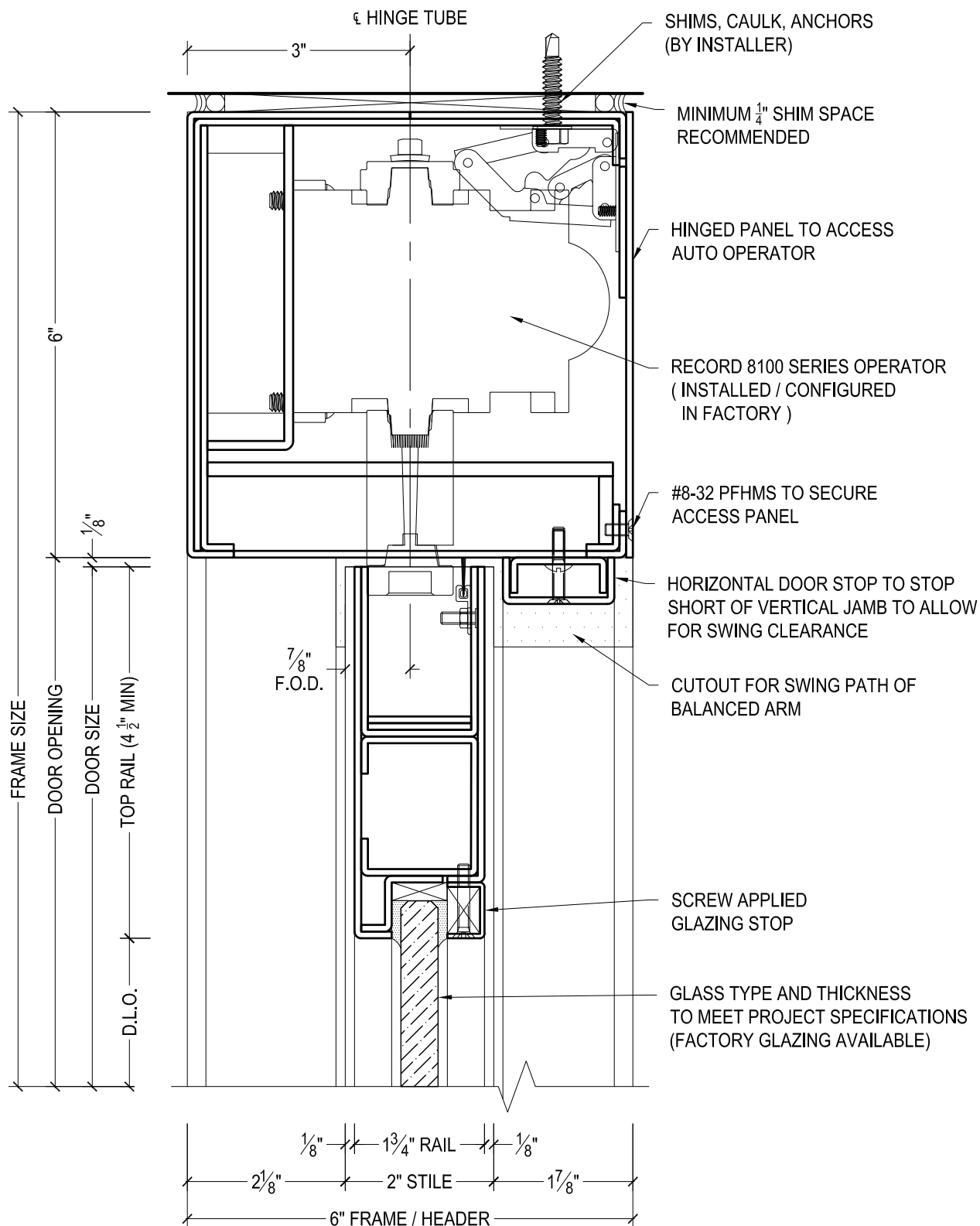


DAWSON DOORS

DRAWN BY:	AG	DRAWING DATE:	12/2/19
SERIES #:	005-BAL	DRAWING #:	5BFPSAS50
DESCRIPTION:	PIVOT JAMB / STILE - DESIGNER SERIES BALANCED DOORS		



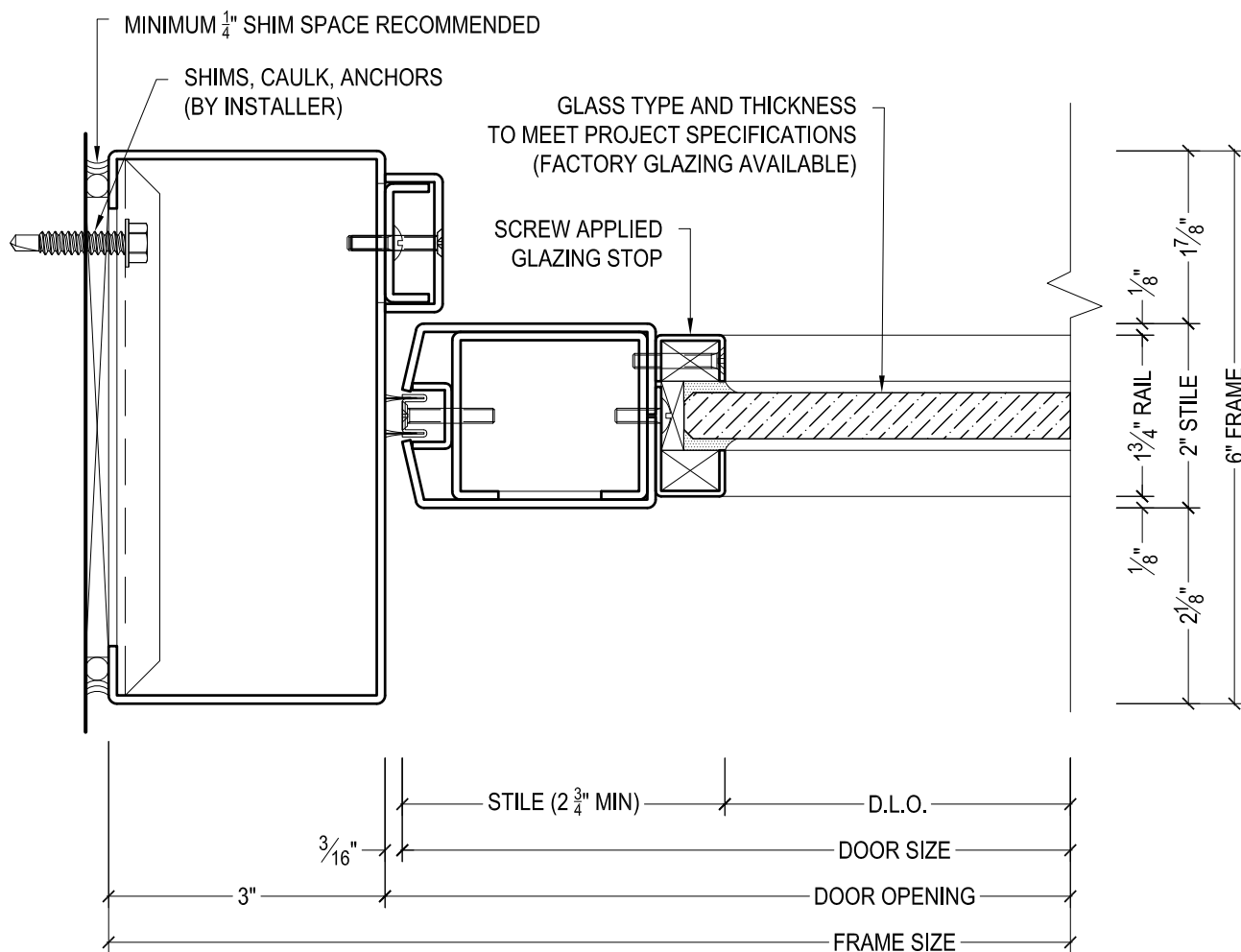
DRAWN BY:	AG	DRAWING DATE:	12/2/19
SERIES #:	005-BAL	DRAWING #:	5BFMSAS50
DESCRIPTION:	MEETING STILES - DESIGNER SERIES BALANCED DOORS		



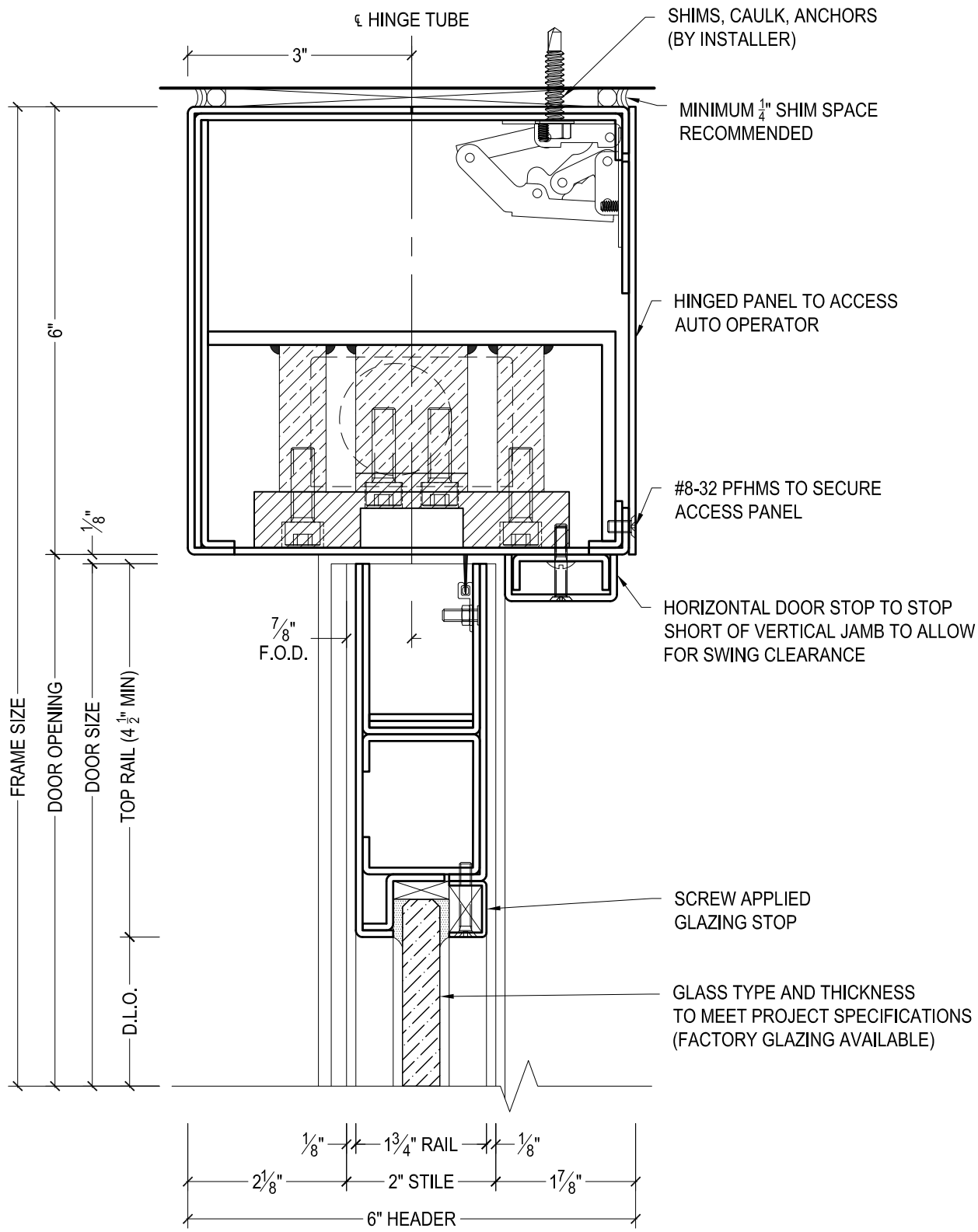
DAWSON DOORS

825 ALLEN ST • JAMESTOWN, NY 14701 • (716) 664-3811 • WWW.DAWSONDOORS.COM

DRAWN BY:	AG	DRAWING DATE:	12/2/19
SERIES #:	005-BAL	DRAWING #:	5BFTRCS50RA
DESCRIPTION:	HEADER / TOP RAIL - DESIGNER SERIES BALANCED DOORS WITH RECORD AUTO OPERATOR		



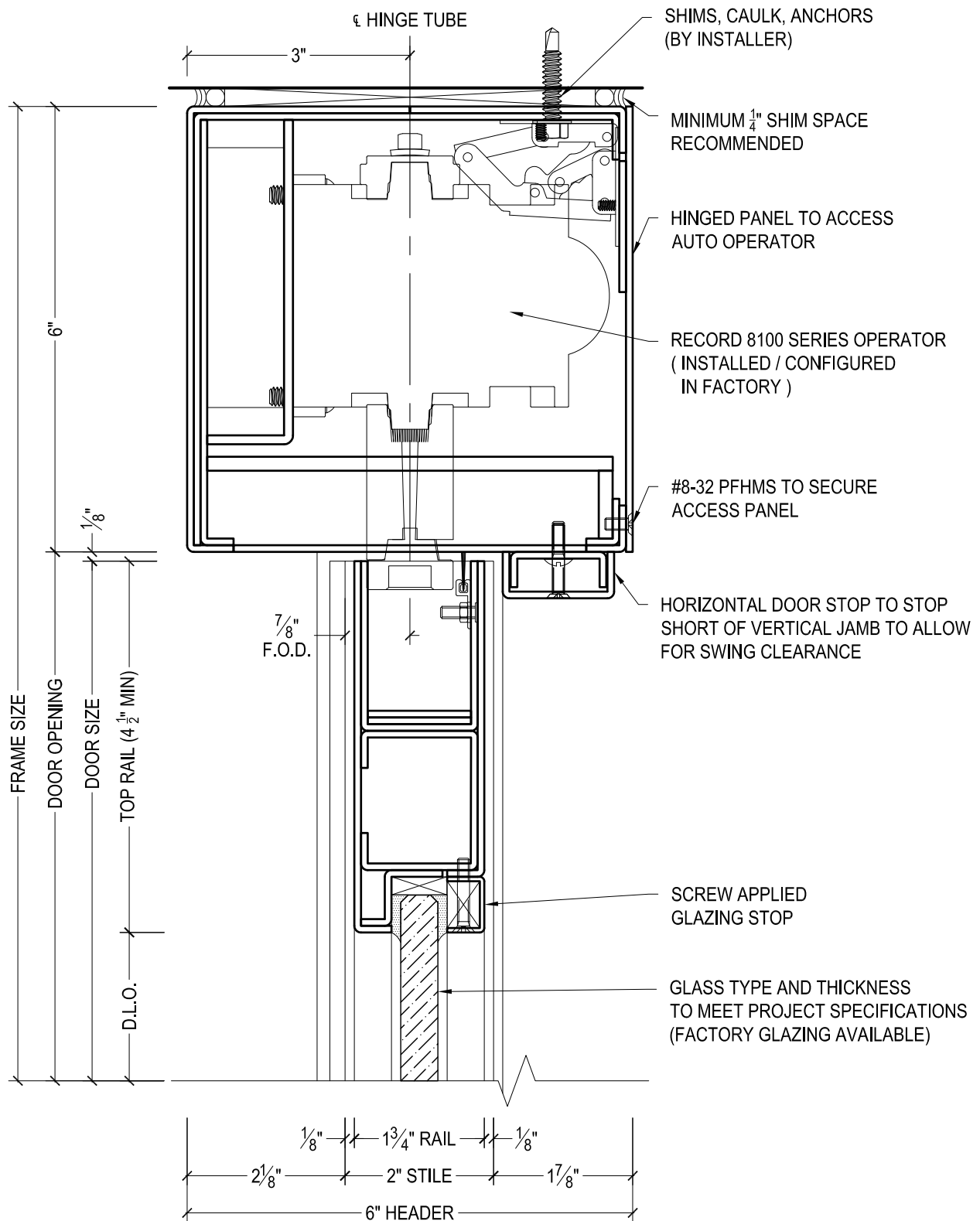
DRAWN BY:	AG	DRAWING DATE:	12/2/19
SERIES #:	005-BAL	DRAWING #:	5BFLSAS50
DESCRIPTION:	LOCK JAMB / STILE - DESIGNER SERIES BALANCED DOORS		



DAWSON DOORS

825 ALLEN ST • JAMESTOWN, NY 14701 • (716) 664-3811 • WWW.DAWSONDOORS.COM

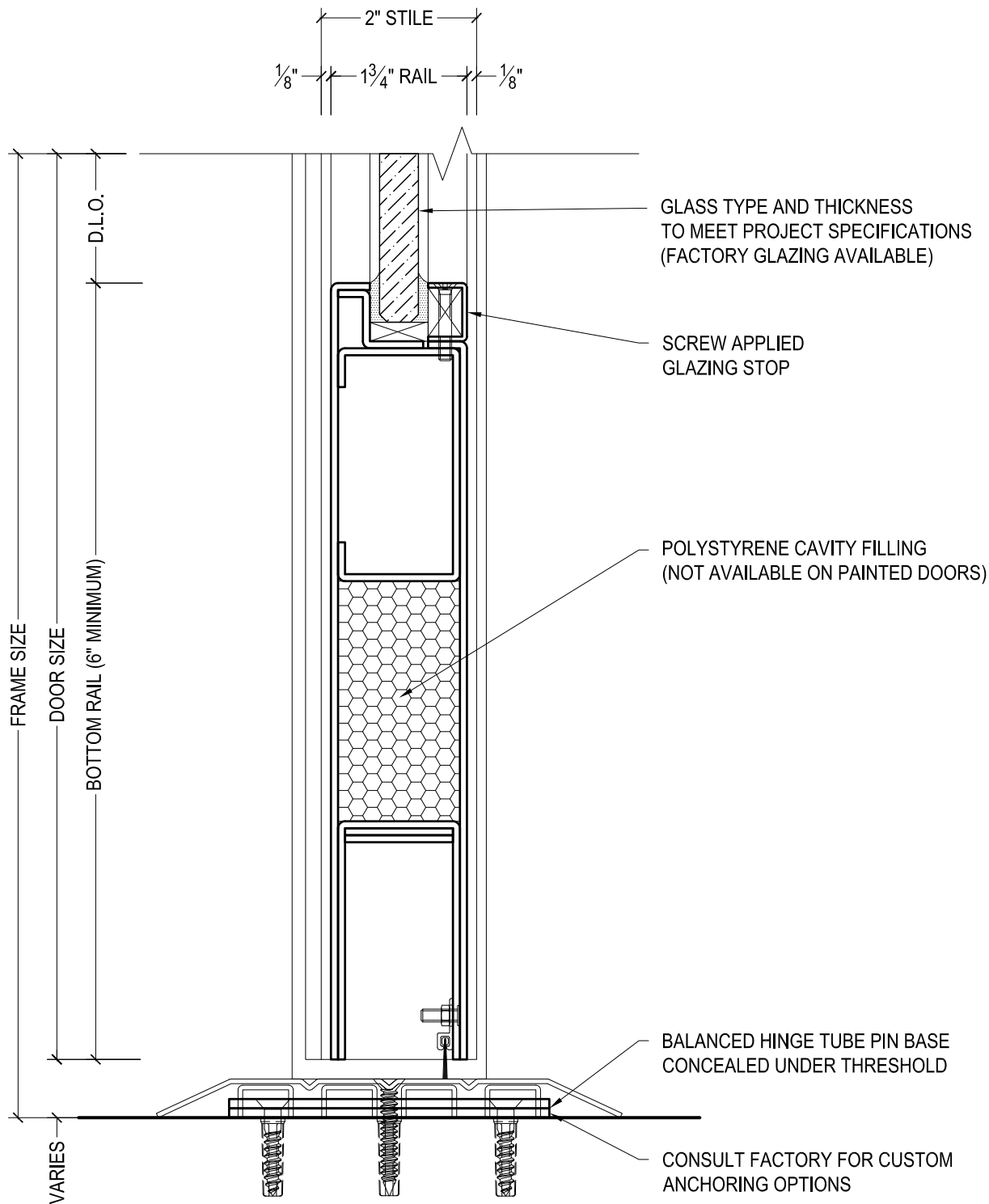
DRAWN BY:	AG	DRAWING DATE:	12/2/19
SERIES #:	005-BAL	DRAWING #:	5BETRC50RM
DESCRIPTION:	HEADER / TOP RAIL - DESIGNER SERIES BALANCED DOORS ON MANUAL DOOR LEAF WITH 6" TALL HEADER FOR EXPOSED HINGE TUBES		



DAWSON DOORS

825 ALLEN ST • JAMESTOWN, NY 14701 • (716) 664-3811 • WWW.DAWSONDOORS.COM

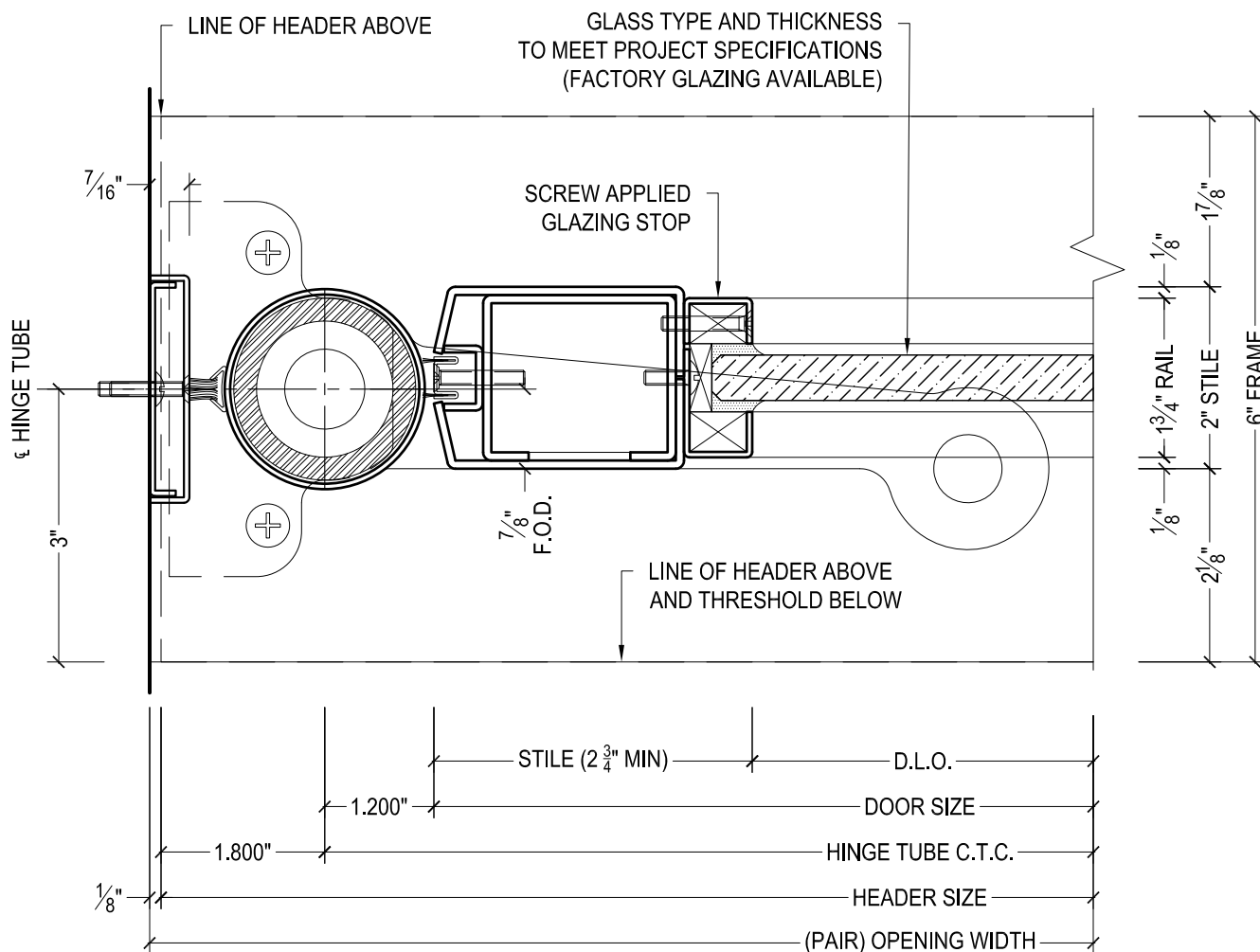
DRAWN BY:	AG	DRAWING DATE:	12/2/19
SERIES #:	005-BAL	DRAWING #:	5BETRCS50RA
DESCRIPTION:	HEADER / TOP RAIL - DESIGNER SERIES BALANCED DOORS ON AUTO OPERATED DOOR LEAF WITH EXPOSED HINGE TUBES		



DAWSON DOORS

825 ALLEN ST • JAMESTOWN, NY 14701 • (716) 664-3811 • WWW.DAWSONDOORS.COM

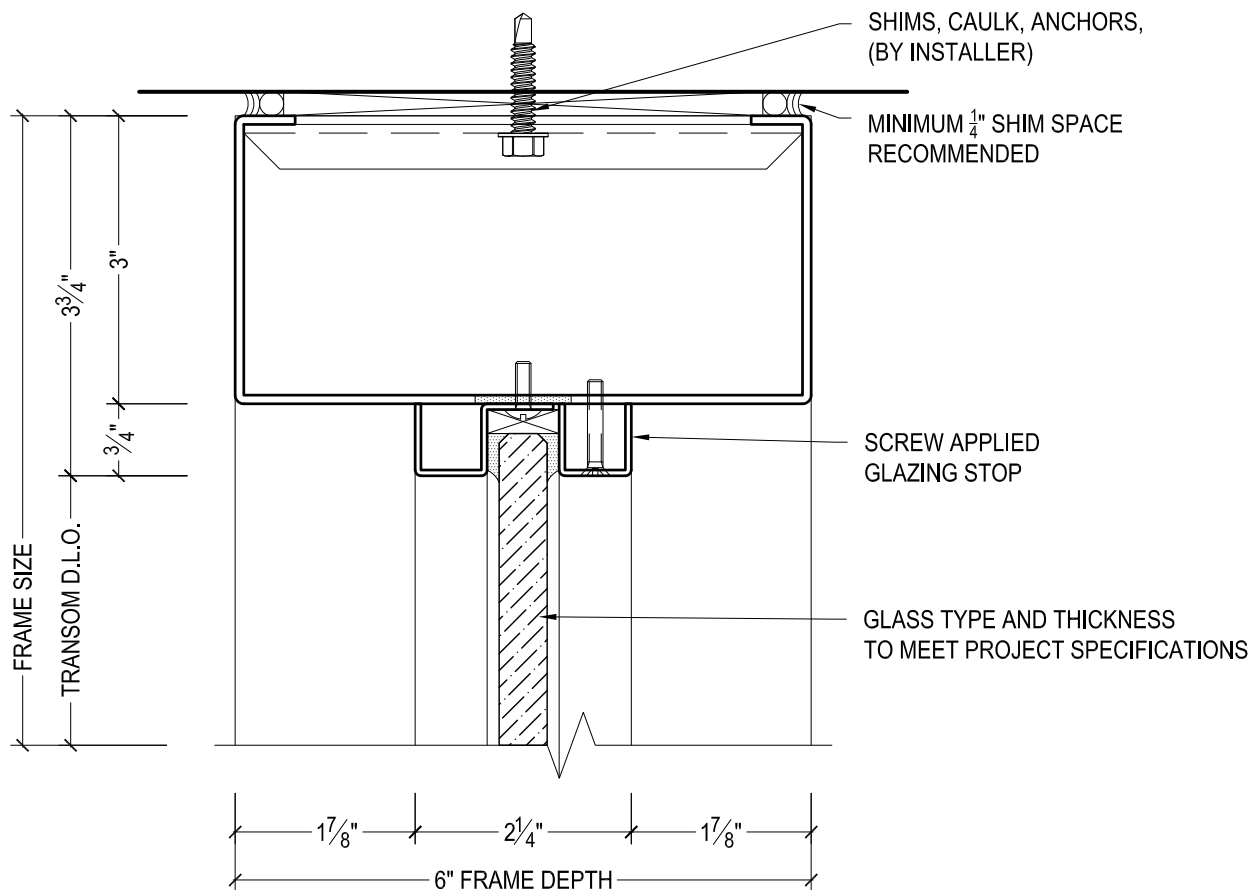
DRAWN BY:	AG	DRAWING DATE:	12/2/19
SERIES #:	005-BAL	DRAWING #:	5BEBHCS50
DESCRIPTION:	BOTTOM RAIL - DESIGNER SERIES BALANCED DOORS, DAWSON 300 SERIES THRESHOLD SHOWN TO CONCEAL HINGE TUBE BASE - 1/2" THRESHOLD -		



DAWSON DOORS

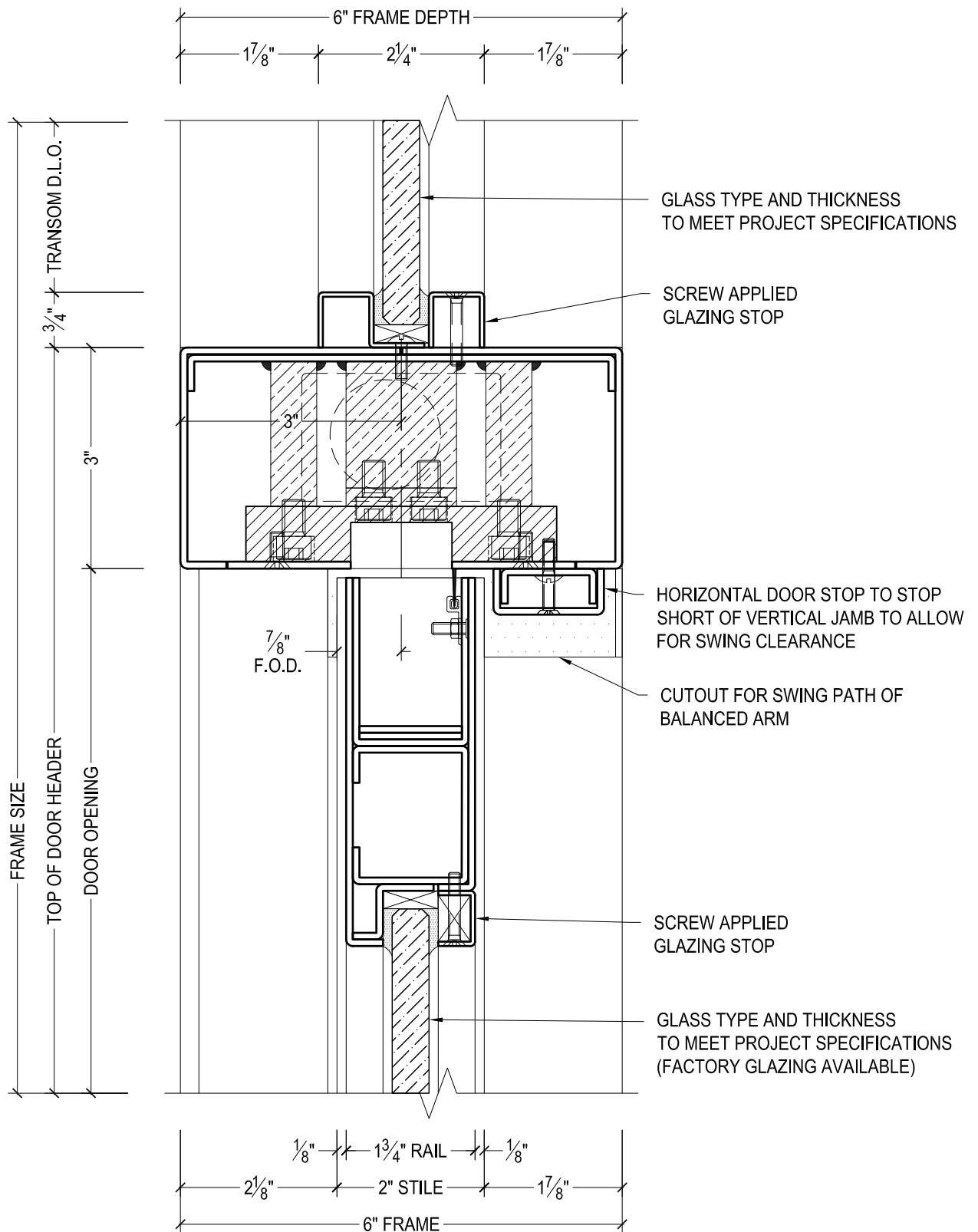
825 ALLEN ST • JAMESTOWN, NY 14701 • (716) 664-3811 • WWW.DAWSONDOORS.COM

DRAWN BY:	AG	DRAWING DATE:	12/2/19
SERIES #:	005-BAL	DRAWING #:	5BEPSAS50
DESCRIPTION:	PIVOT STILE - DESIGNER SERIES BALANCED DOORS WITH EXPOSED HINGE TUBE		



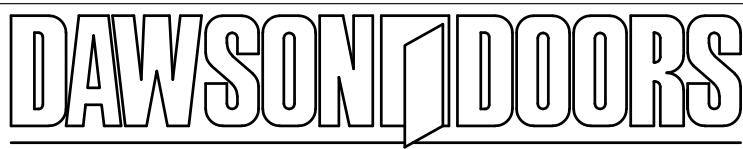
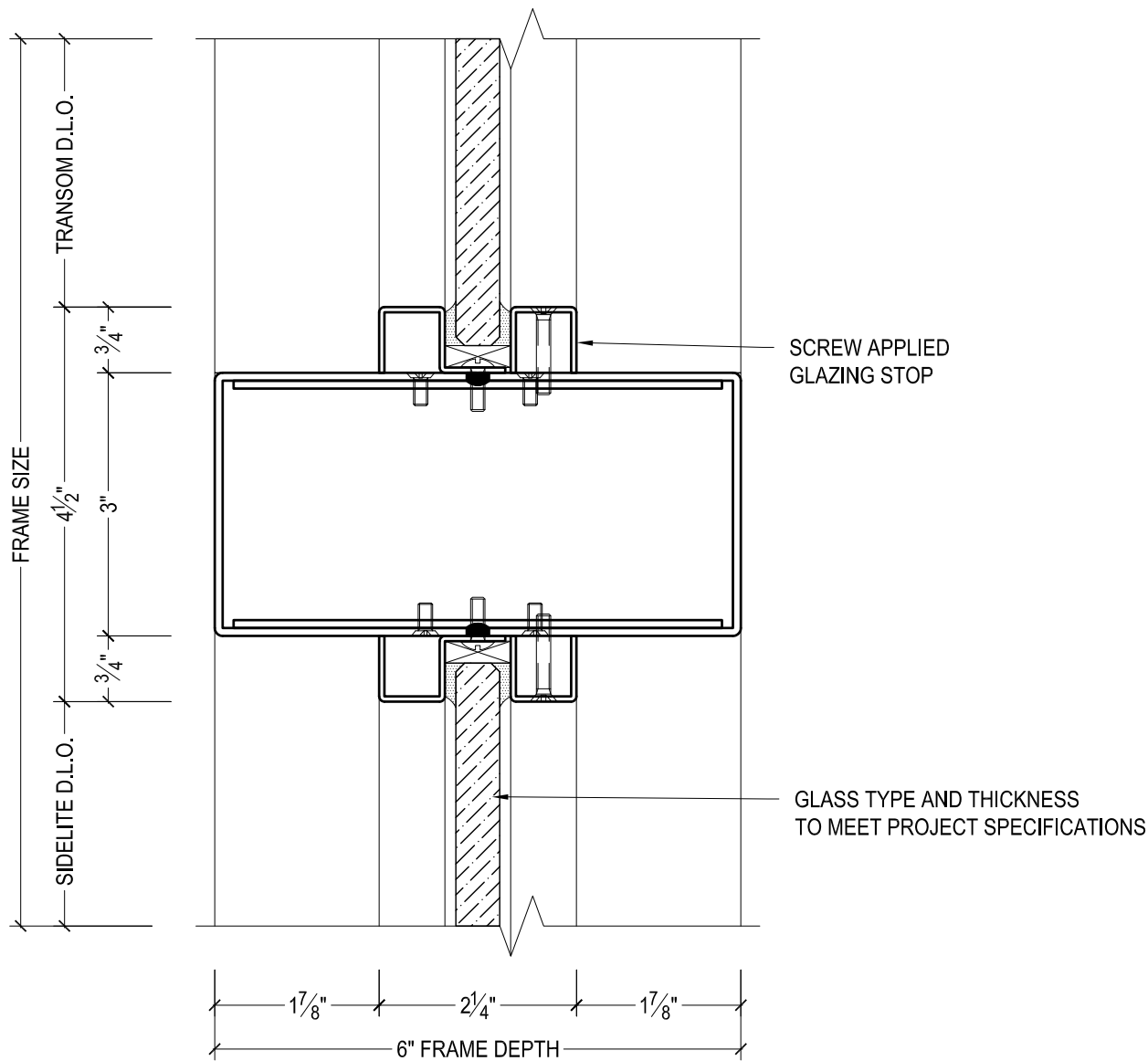
825 ALLEN ST • JAMESTOWN, NY 14701 • (716) 664-3811 • WWW.DAWSONDOORS.COM

DRAWN BY:	AG	DRAWING DATE:	12/2/19
SERIES #:	005-BAL	DRAWING #:	FXXSHAS50
DESCRIPTION:	TRANSOM HEADER WITH APPLIED STOPS		



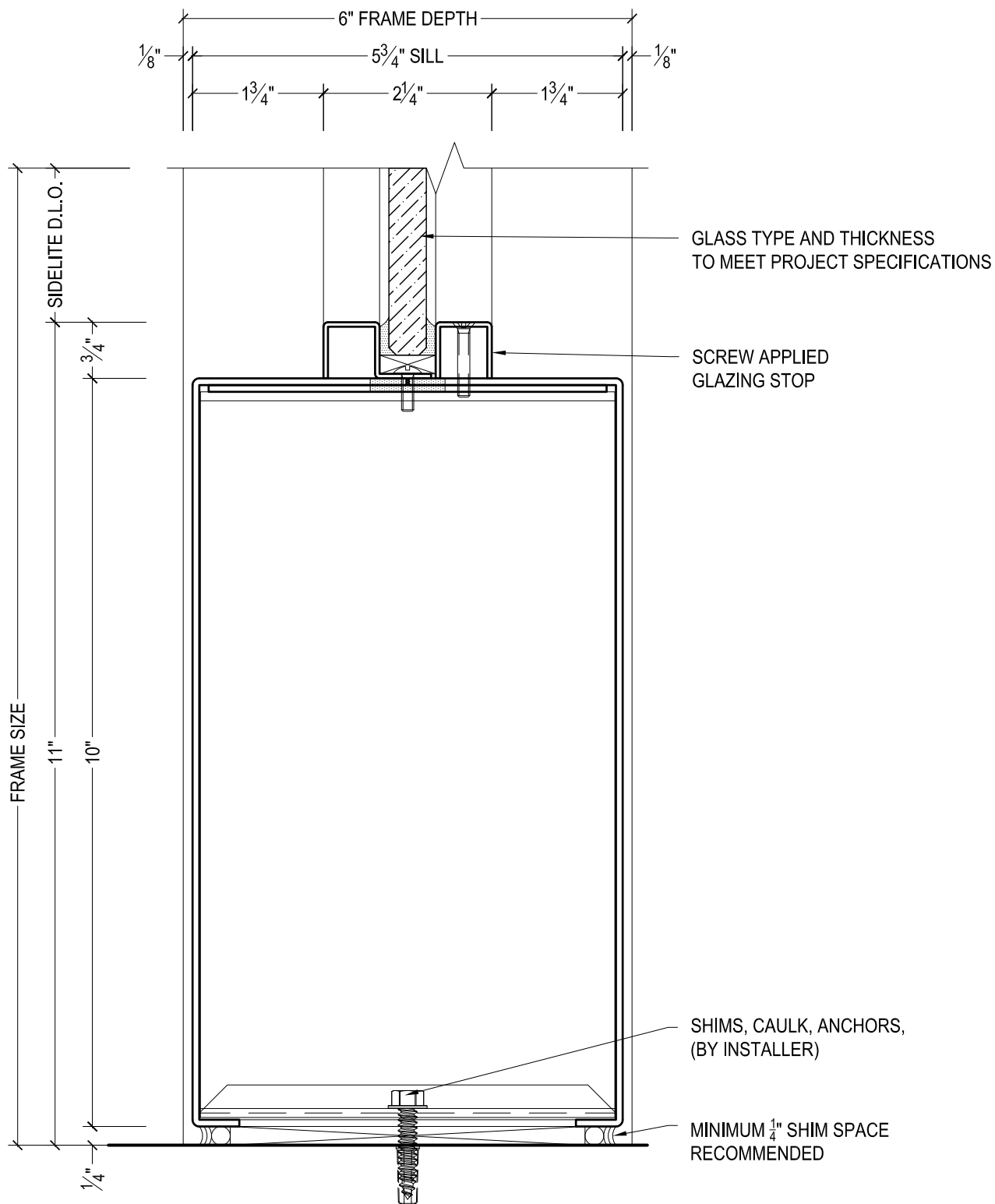
825 ALLEN ST • JAMESTOWN, NY 14701 • (716) 664-3811 • WWW.DAWSONDOORS.COM

DRAWN BY:	AG	DRAWING DATE:	12/2/19
SERIES #:	005-BAL	DRAWING #:	5BFTHCS50
DESCRIPTION:	HEADER / TOP RAIL - DESIGNER SERIES BALANCED DOORS WITH TRANSOM ABOVE WITH APPLIED STOPS		



825 ALLEN ST • JAMESTOWN, NY 14701 • (716) 664-3811 • WWW.DAWSONDOORS.COM

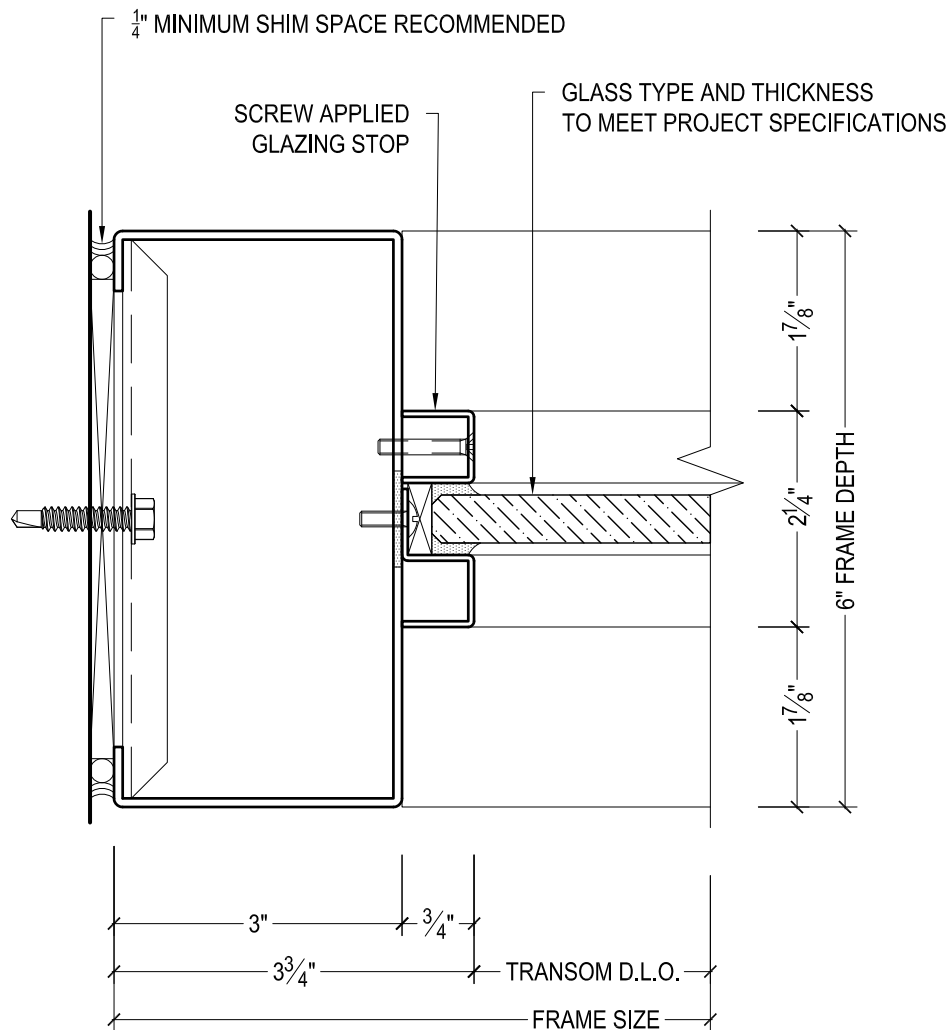
DRAWN BY:	AG	DRAWING DATE:	12/2/19
SERIES #:	005-BAL	DRAWING #:	FXXSCAS50
DESCRIPTION:	SIDELITE BELOW & TRANSOM ABOVE WITH APPLIED STOPS		



DAWSON DOORS

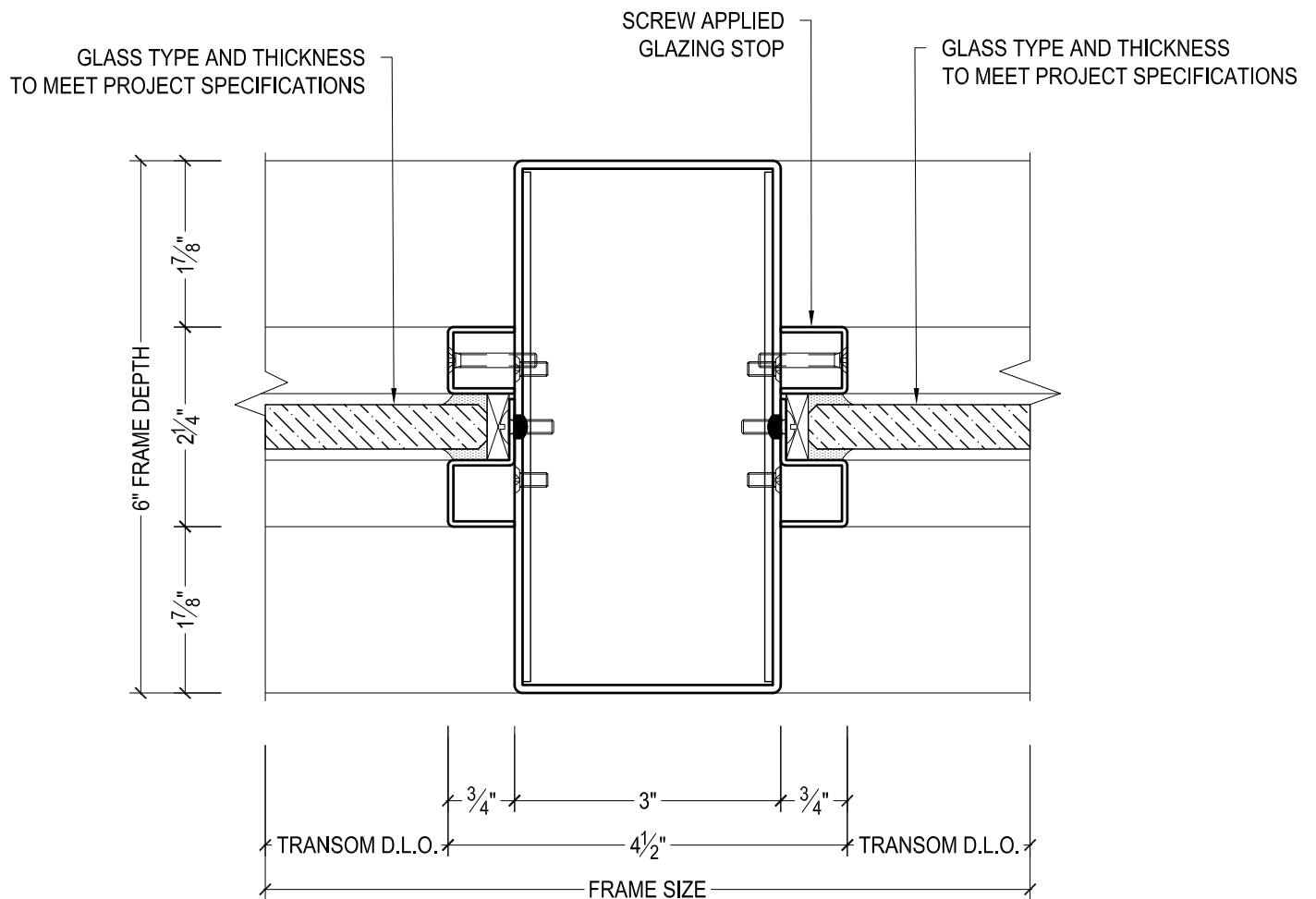
825 ALLEN ST • JAMESTOWN, NY 14701 • (716) 664-3811 • WWW.DAWSONDOORS.COM

DRAWN BY:	AG	DRAWING DATE:	12/2/19
SERIES #:	005-BAL	DRAWING #:	FXXSSAS50
DESCRIPTION:	SIDELITE SILL WITH APPLIED STOPS		



825 ALLEN ST • JAMESTOWN, NY 14701 • (716) 664-3811 • WWW.DAWSONDOORS.COM

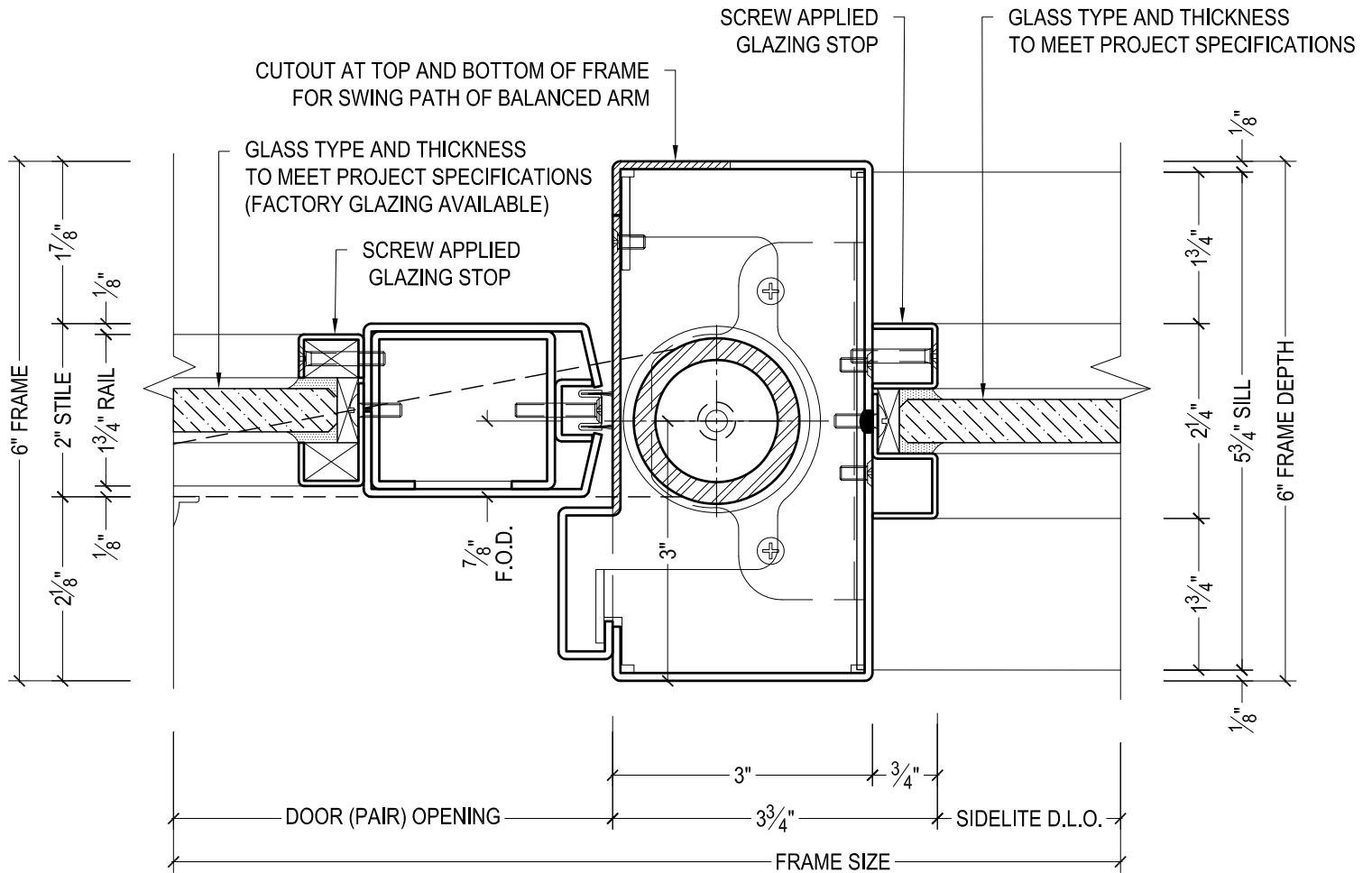
DRAWN BY:	AG	DRAWING DATE:	12/2/19
SERIES #:	005-BAL	DRAWING #:	FXXTWAS50
DESCRIPTION:	TRANSOM JAMB WITH APPLIED STOPS		



DAWSON DOORS

825 ALLEN ST • JAMESTOWN, NY 14701 • (716) 664-3811 • WWW.DAWSONDOORS.COM

DRAWN BY:	AG	DRAWING DATE:	12/2/19
SERIES #:	005-BAL	DRAWING #:	FXXTVAS50
DESCRIPTION:	TRANSOM MULLION WITH APPLIED STOPS		



DAWSON DOORS

825 ALLEN ST • JAMESTOWN, NY 14701 • (716) 664-3811 • WWW.DAWSONDOORS.COM

DRAWN BY:	AG	DRAWING DATE:	12/2/19
SERIES #:	005-BAL	DRAWING #:	5BFSMAS50
DESCRIPTION:	PIVOT STILE / JAMB / SIDELITE MULLION - DESIGNER SERIES BALANCED DOORS WITH APPLIED STOPS. JAMB TREATED AS SIDELITE MULLION.		