

1. MATERIALS & FINISHES

- A. STAINLESS STEEL, BRASS, AND BRONZE ARE AVAILABLE IN #8 MIRROR, #6 SATIN, #4 SATIN, OR NON-DIRECTIONAL (ANGEL HAIR) FINISH. DAWSON DOES NOT PROVIDE LACQUERED FINISH ON BRASS OR BRONZE PRODUCTS. WET PAINTED OR POWDER COATED DOORS WILL BE FABRICATED FROM GALVANNEALED STEEL. CONSULT FACTORY FOR CUSTOM FINISHES.
- B. STAINLESS STEEL AND PAINTED GALVANNEALED STEEL DESIGNER SERIES DOORS TO BE FABRICATED WITH 13 GA MATERIALS AND 14 GA INTERNAL COMPONENTS. GLASS STOPS TO BE FABRICATED FROM 16 GA MATERIAL.
- C. BRASS AND BRONZE DESIGNER SERIES DOORS TO BE FABRICATED WITH .090" MATERIALS AND .090" INTERNAL COMPONENTS. GLASS STOPS TO BE FABRICATED FROM .060" MATERIAL.
- D. STAINLESS STEEL AND PAINTED GALVANNEALED STEEL FRAMES AND DOOR STOPS TO BE FABRICATED FROM 13 GA MATERIAL. TRANSOM AND SIDELITE GLASS STOPS TO BE FABRICATED FROM 16 GA MATERIAL.
- E. BRASS AND BRONZE FRAMES AND DOOR STOPS TO BE FABRICATED FROM .090" MATERIAL. TRANSOM AND SIDELITE GLASS STOPS TO BE FABRICATED FROM .060" MATERIAL.

2. STANDARD DIMENSIONS

- A. DOORS HAVE A MINIMUM TOP RAIL OF 4". STILE AND RAIL DOORS HAVE A MINIMUM STILE WIDTH OF $2\frac{3}{4}$ ". ALL DOORS HAVE A STANDARD BOTTOM RAIL DIMENSION OF 10" TO MEET ADA CODE. MINIMUM BOTTOM RAIL OF 6" WILL NOT MEET ADA. MINIMUM DIMENSIONS SUBJECT TO CHANGE BASED ON HARDWARE - CONSULT FACTORY.
- B. FRAME PROFILES HAVE A MINIMUM SIZE OF 1" FACE x $4\frac{3}{4}$ " DEPTH. MINIMUM DIMENSIONS SUBJECT TO CHANGE BASED ON HARDWARE AND ASPECT RATIO OF FRAME. CONSULT FACTORY FOR CUSTOM SIZES.
- C. SEE GLAZING DETAILS FOR STANDARD GLASS POCKET AND STANDARD GLASS BITE. CONSULT FACTORY FOR CUSTOM GLASS POCKET OR CUSTOM GLASS BITE.
- E. DOOR STOPS FABRICATED $\frac{5}{8}$ " HIGH STANDARD, VARYING WITH HARDWARE REQUIREMENTS. WIDTH VARIES AS REQUIRED. CONSULT FACTORY FOR CUSTOM SIZES AND PROFILES.
- F. MINIMUM BUTT HUNG PIVOTED DOOR WIDTH TO MEET ADA MINIMUM OF 32" CLEAR OPENING IS $35\frac{1}{4}$ ". MINIMUM SIZE OF DOOR SUBJECT TO CHANGE BASED ON HARDWARE REQUIREMENTS.

3. HARDWARE

- A. DETERMINING NUMBER OF HINGES REQUIRED. ONE HINGE FOR EVERY 30" OF DOOR HEIGHT.

DOOR HEIGHT	NUMBER OF HINGES
UP TO AND NOT OVER 90"	4 HINGES
OVER 90" AND IF OVER 120"	5 HINGES

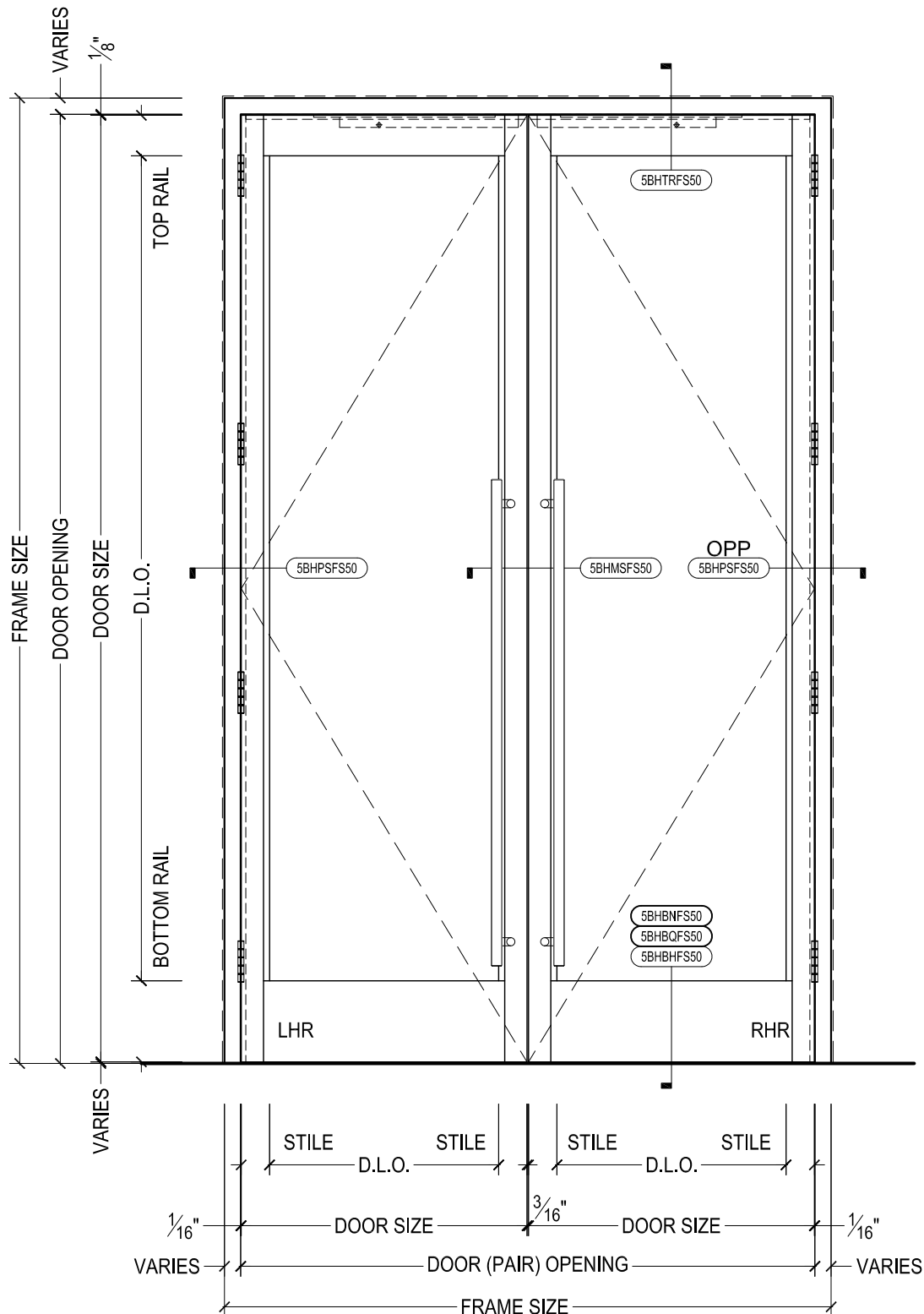
- B. DISTANCE FROM EDGE OF LEAF TO SWAGE LINE TO BE DETERMINED BY MANUFACTURER TEMPLATES.

- C. FULL MORTISED HINGES ARE RECOMMENDED WITH A "METAL" FRAME AND DOOR APPLICATION.



825 ALLEN ST • JAMESTOWN, NY 14701 • (716) 664-3811 • WWW.DAWSONDOORS.COM

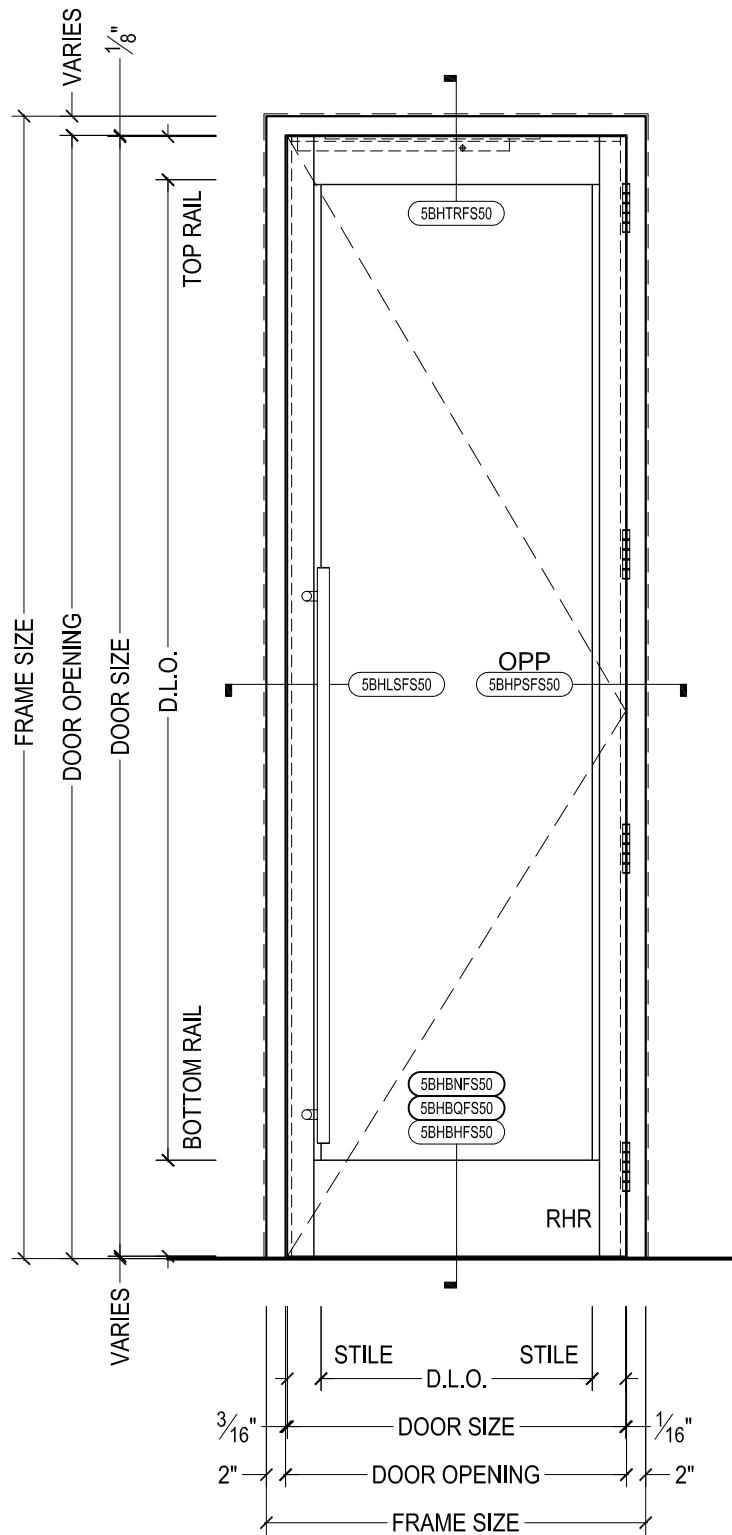
DRAWN BY:	JBL	DRAWING DATE:	12/4/19
SERIES #:	005-BH	DRAWING #:	NOTES 1
DESCRIPTION:	GENERAL NOTES FOR 005 DESIGNER SERIES DOORS WITH BUTT HUNG OR CONTINUOUS HINGE PIVOTED HARDWARE		



DAWSON DOORS

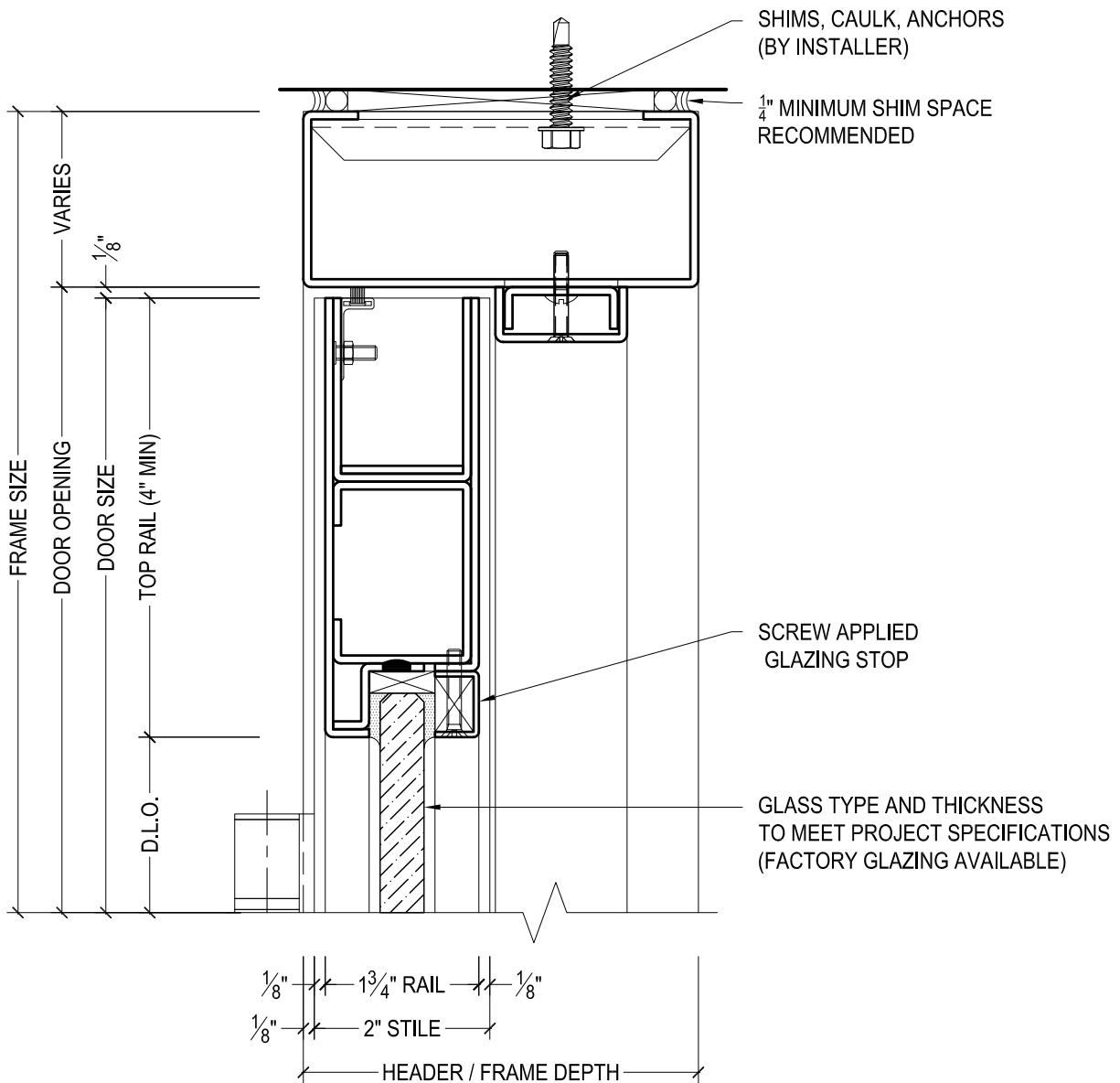
825 ALLEN ST • JAMESTOWN, NY 14701 • (716) 664-3811 • WWW.DAWSONDOORS.COM

DRAWN BY:	JBL	DRAWING DATE:	12/4/19
SERIES #:	005-BH	DRAWING #:	EL-FC-PAIR
DESCRIPTION:	ELEVATION - STILE AND RAIL DESIGNER SERIES BUTT HUNG OR CONTINUOUS HINGE DOORS		



825 ALLEN ST • JAMESTOWN, NY 14701 • (716) 664-3811 • WWW.DAWSONDOORS.COM

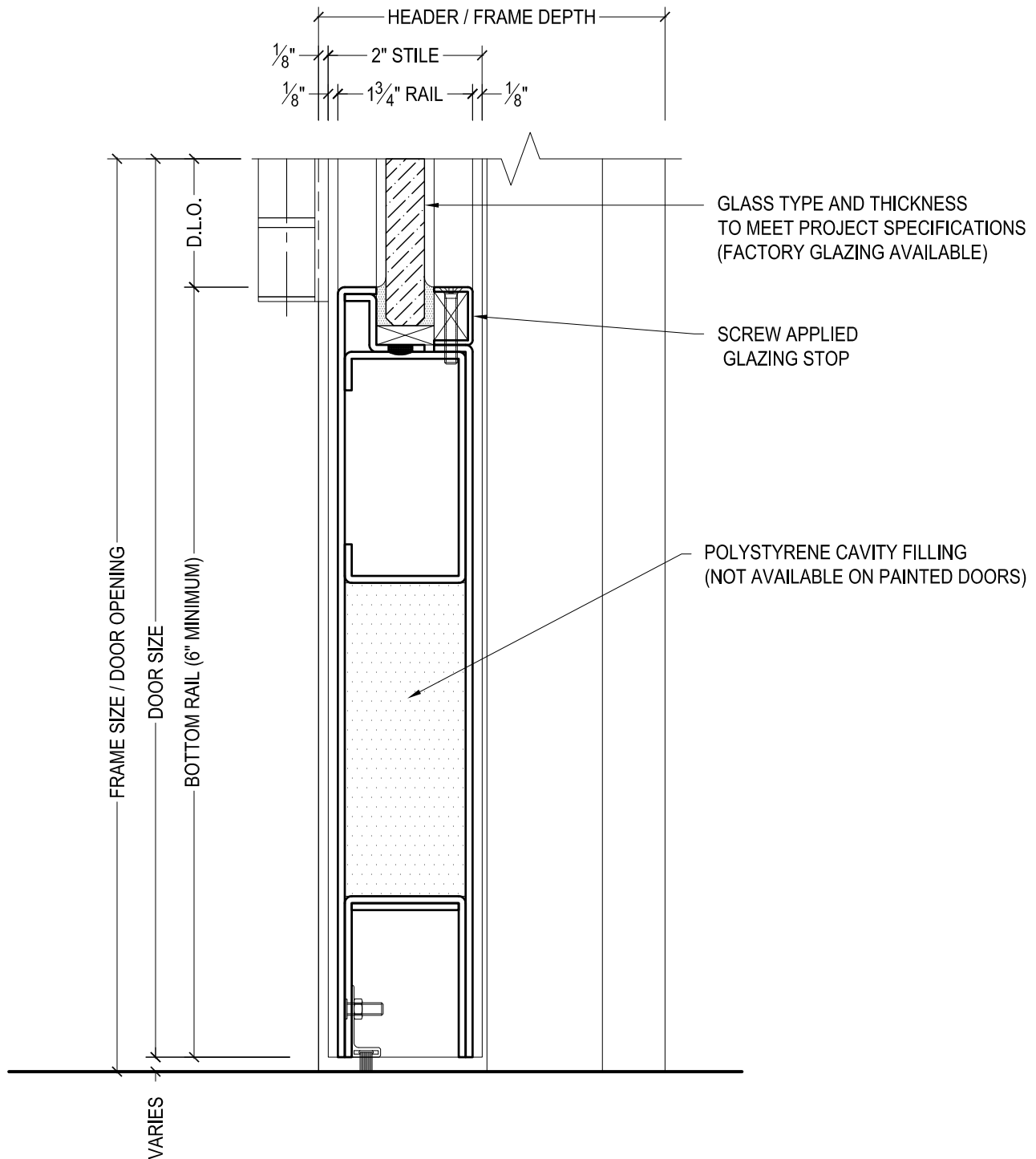
DRAWN BY:	JBL	DRAWING DATE:	12/4/19
SERIES #:	005-BH	DRAWING #:	EL-SAO-SIN
DESCRIPTION:	ELEVATION - STILE AND RAIL DESIGNER SERIES BUTT HUNG OR CONTINUOUS HINGE DOORS WITH SURFACE MOUNTED AUTOMATIC OPERATOR		



DAWSON DOORS

825 ALLEN ST • JAMESTOWN, NY 14701 • (716) 664-3811 • WWW.DAWSONDOORS.COM

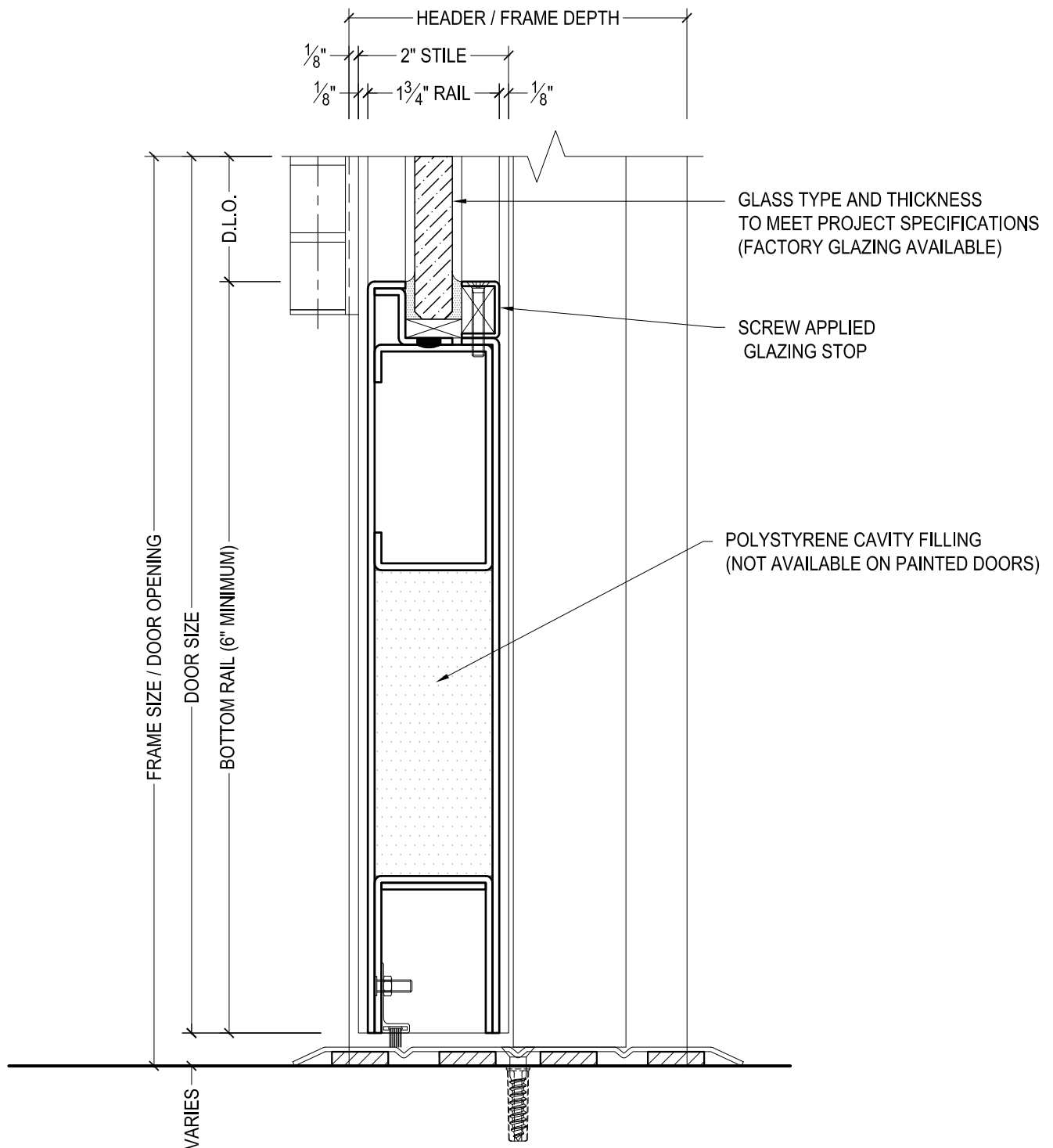
DRAWN BY:	JBL	DRAWING DATE:	12/4/19
SERIES #:	005-BH	DRAWING #:	5BHTRFS50
DESCRIPTION:	HEADER / TOP RAIL - DESIGNER SERIES BUTT HUNG OR CONTINUOUS HINGE DOORS		



DAWSON DOORS

825 ALLEN ST • JAMESTOWN, NY 14701 • (716) 664-3811 • WWW.DAWSONDOORS.COM

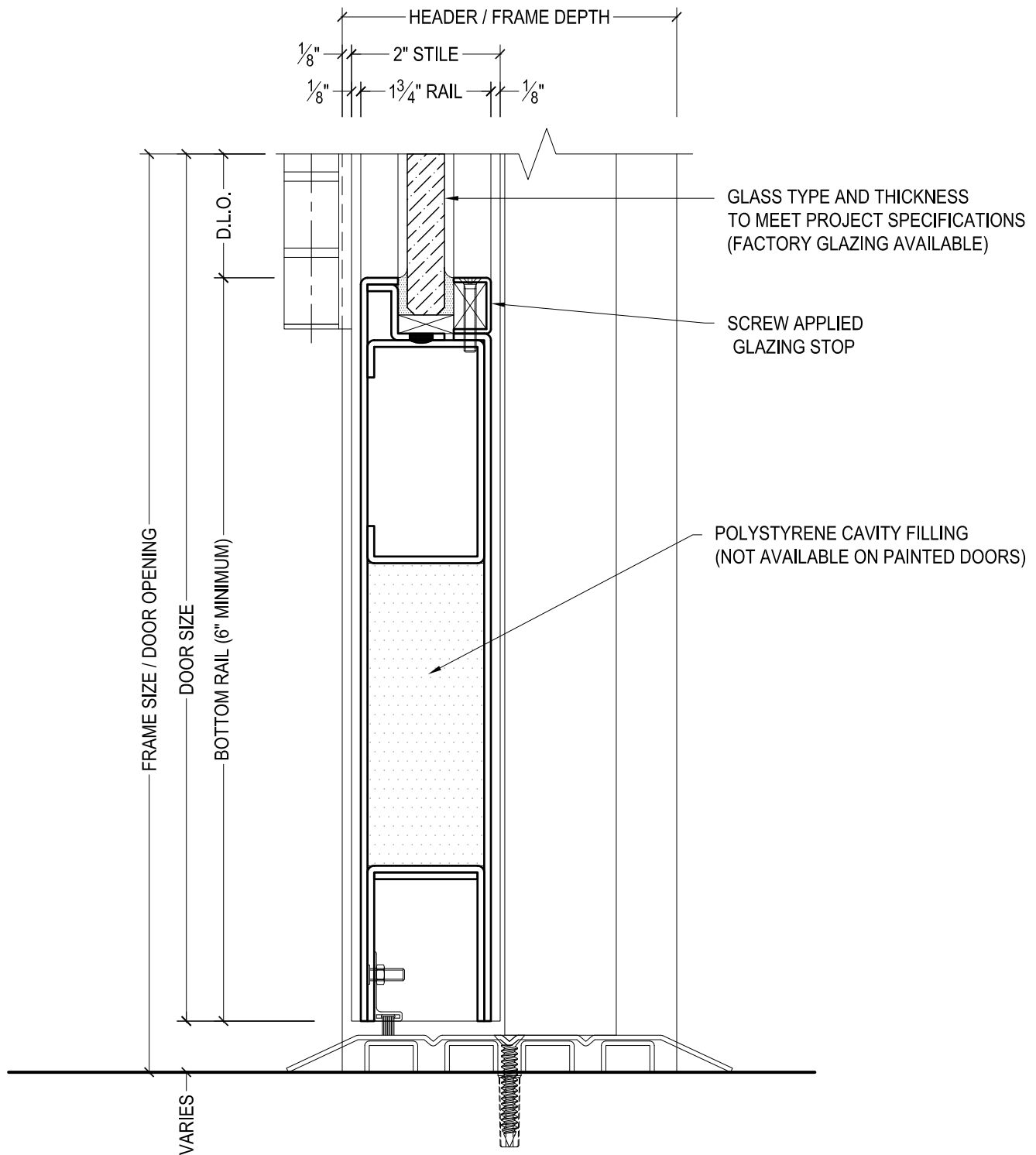
DRAWN BY:	JBL	DRAWING DATE:	12/4/19
SERIES #:	005-BH	DRAWING #:	5BHB NFS50
DESCRIPTION:	BOTTOM RAIL / FLOOR CLOSER - DESIGNER SERIES BUTT HUNG OR CONTINUOUS HINGE DOORS - NO THRESHOLD -		



DAWSON DOORS

825 ALLEN ST • JAMESTOWN, NY 14701 • (716) 664-3811 • WWW.DAWSONDOORS.COM

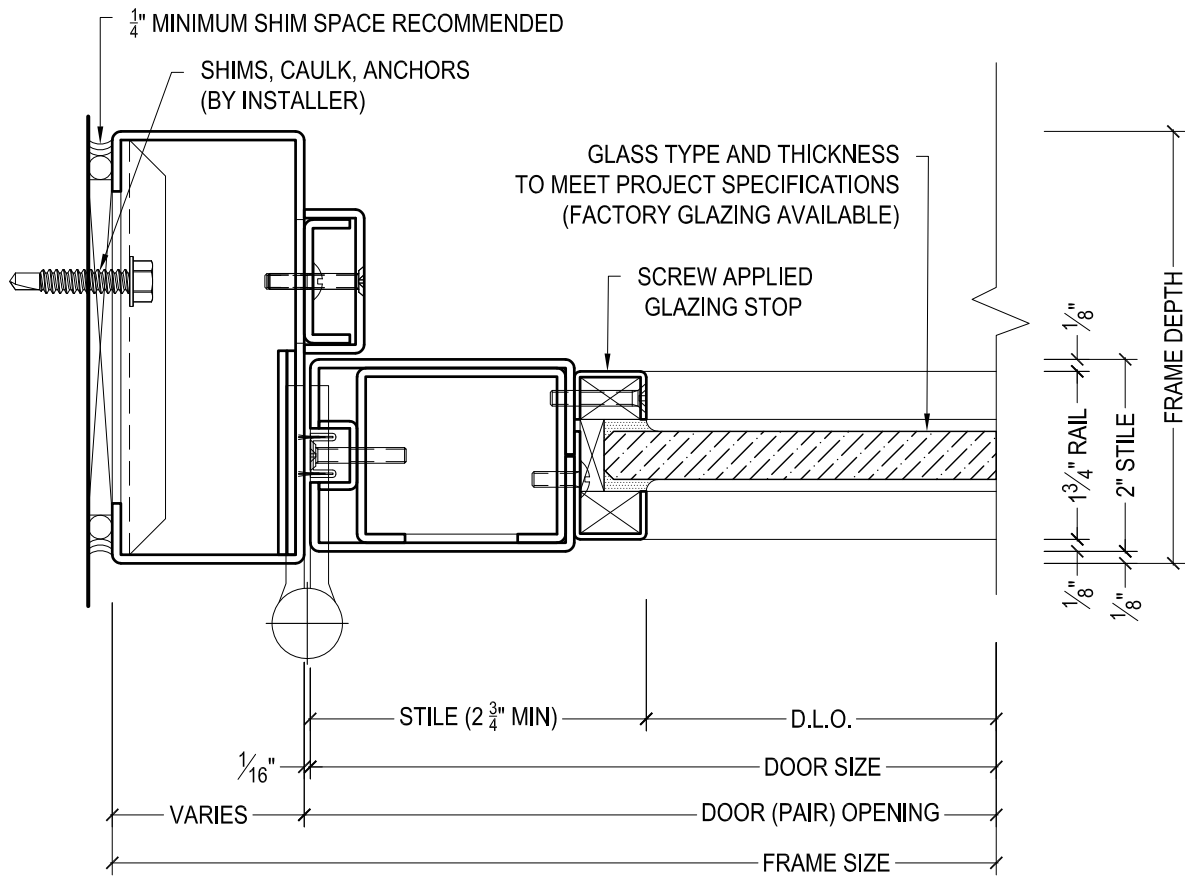
DRAWN BY:	JBL	DRAWING DATE:	12/4/19
SERIES #:	005-BH	DRAWING #:	5BHBQFS50
DESCRIPTION:	BOTTOM RAIL / FLOOR CLOSER - DESIGNER SERIES BUTT HUNG OR CONTINUOUS HINGE DOORS - 1/4" THRESHOLD -		



DAWSON DOORS

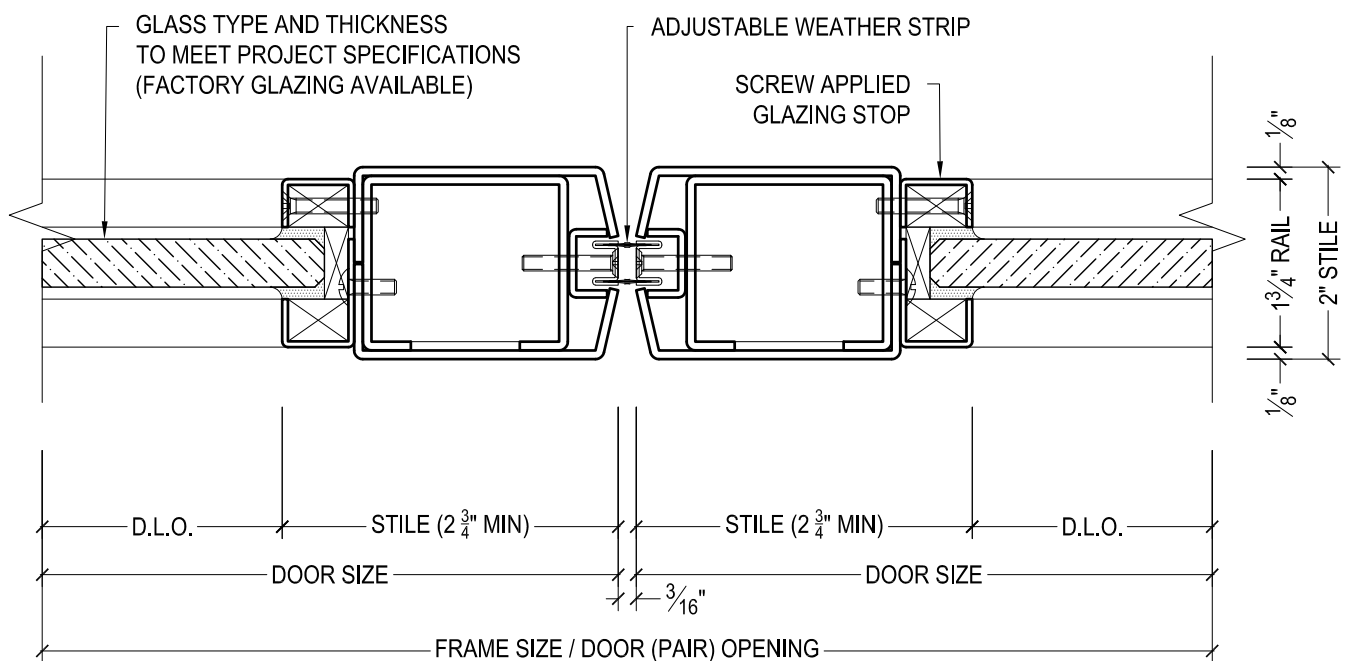
825 ALLEN ST • JAMESTOWN, NY 14701 • (716) 664-3811 • WWW.DAWSONDOORS.COM

DRAWN BY:	JBL	DRAWING DATE:	12/4/19
SERIES #:	005-BH	DRAWING #:	5BHBHFS50
DESCRIPTION:	BOTTOM RAIL / FLOOR CLOSER - DESIGNER SERIES BUTT HUNG OR CONTINUOUS HINGE DOORS - 1/2" THRESHOLD -		

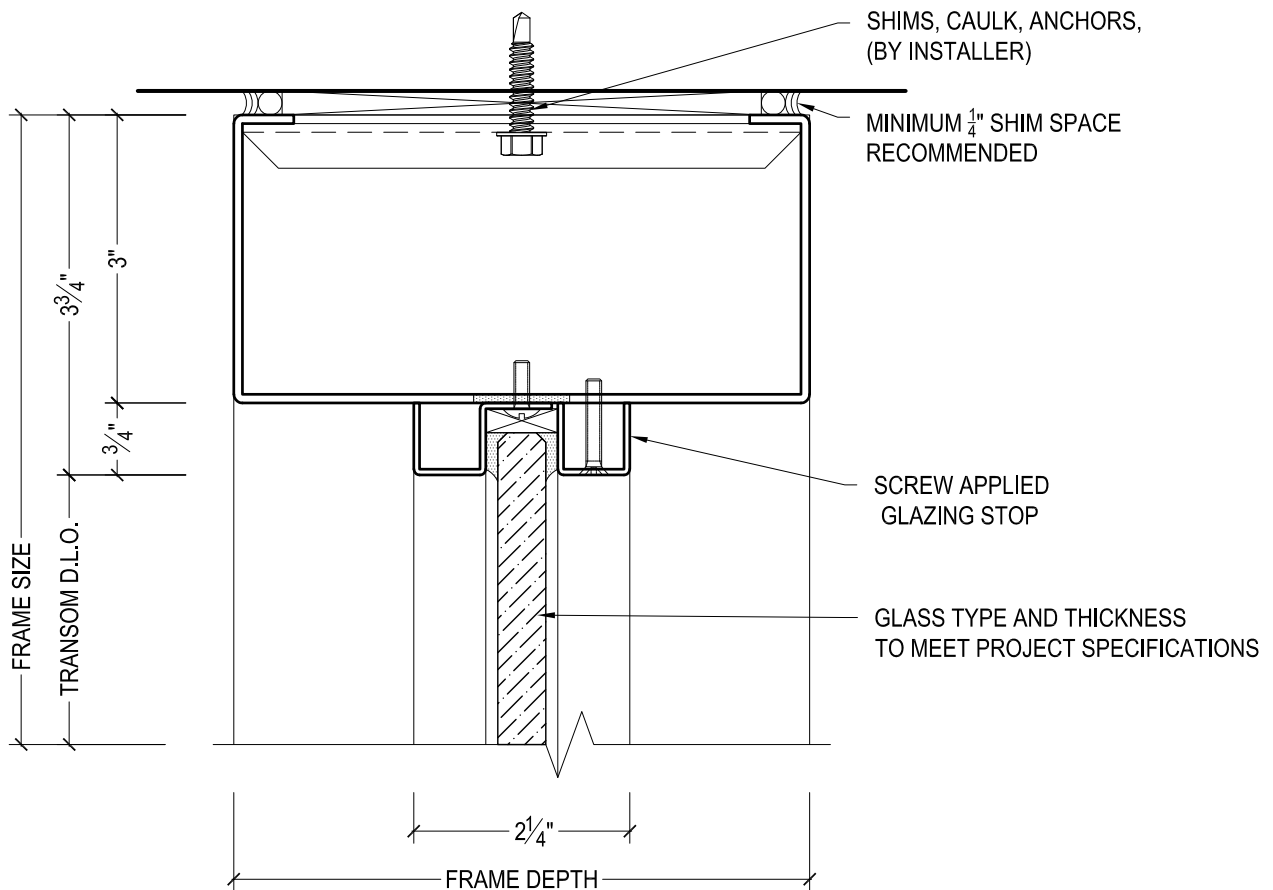


825 ALLEN ST • JAMESTOWN, NY 14701 • (716) 664-3811 • WWW.DAWSONDOORS.COM

DRAWN BY:	JBL	DRAWING DATE:	12/4/19
SERIES #:	005-BH	DRAWING #:	5BHPSFS50
DESCRIPTION:	JAMB / PIVOT STILE - DESIGNER SERIES BUTT HUNG OR CONTINUOUS HINGE DOORS		

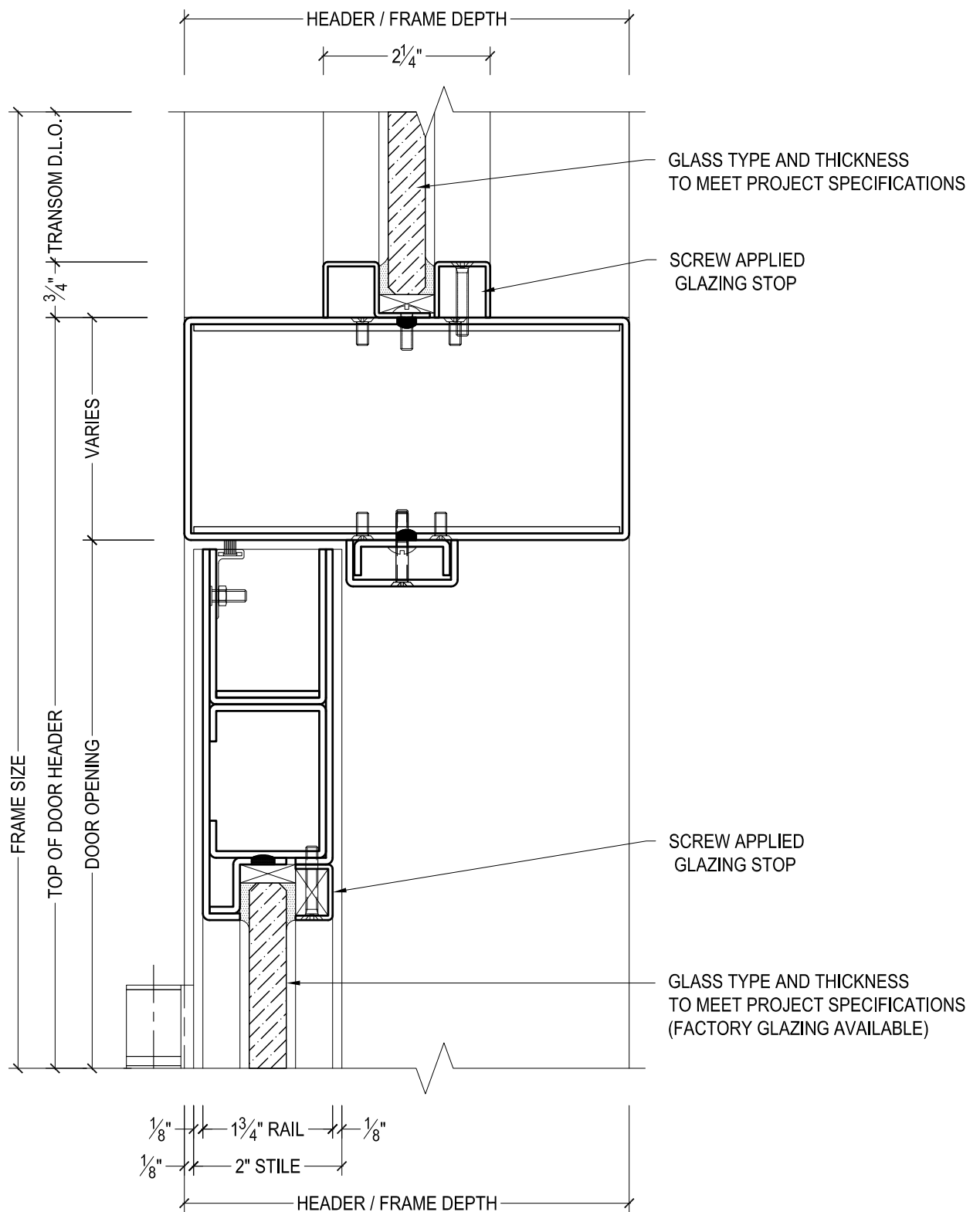


DRAWN BY:	JBL	DRAWING DATE:	12/4/19
SERIES #:	005-BH	DRAWING #:	5BHMSFS50
DESCRIPTION:	MEETING STILES - DESIGNER SERIES BUTT HUNG OR CONTINUOUS HINGE DOORS		



825 ALLEN ST • JAMESTOWN, NY 14701 • (716) 664-3811 • WWW.DAWSONDOORS.COM

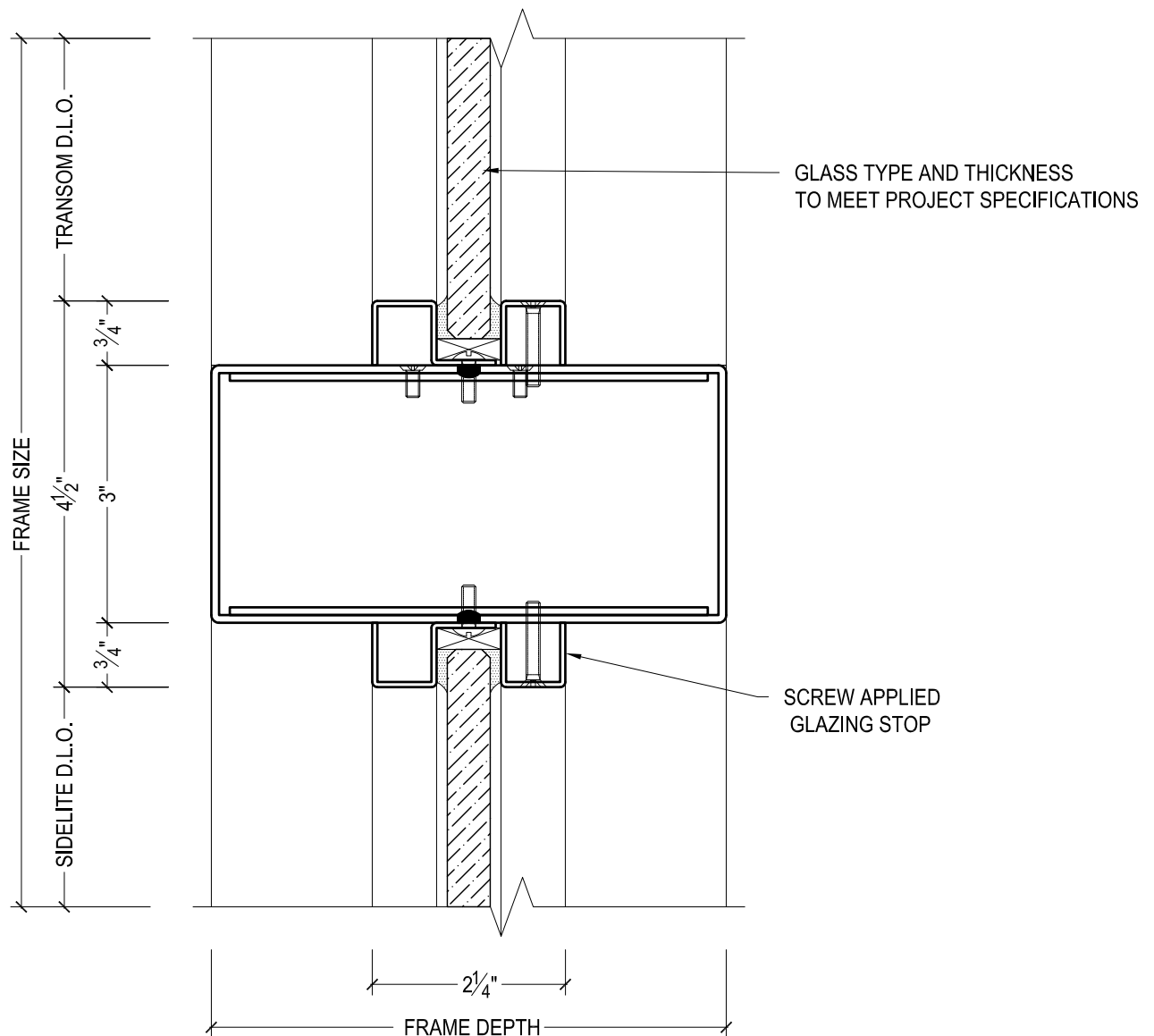
DRAWN BY:	JBL	DRAWING DATE:	12/4/19
SERIES #:	005-BH	DRAWING #:	FXXTHAS50
DESCRIPTION:	TRANSOM HEADER WITH APPLIED STOPS		



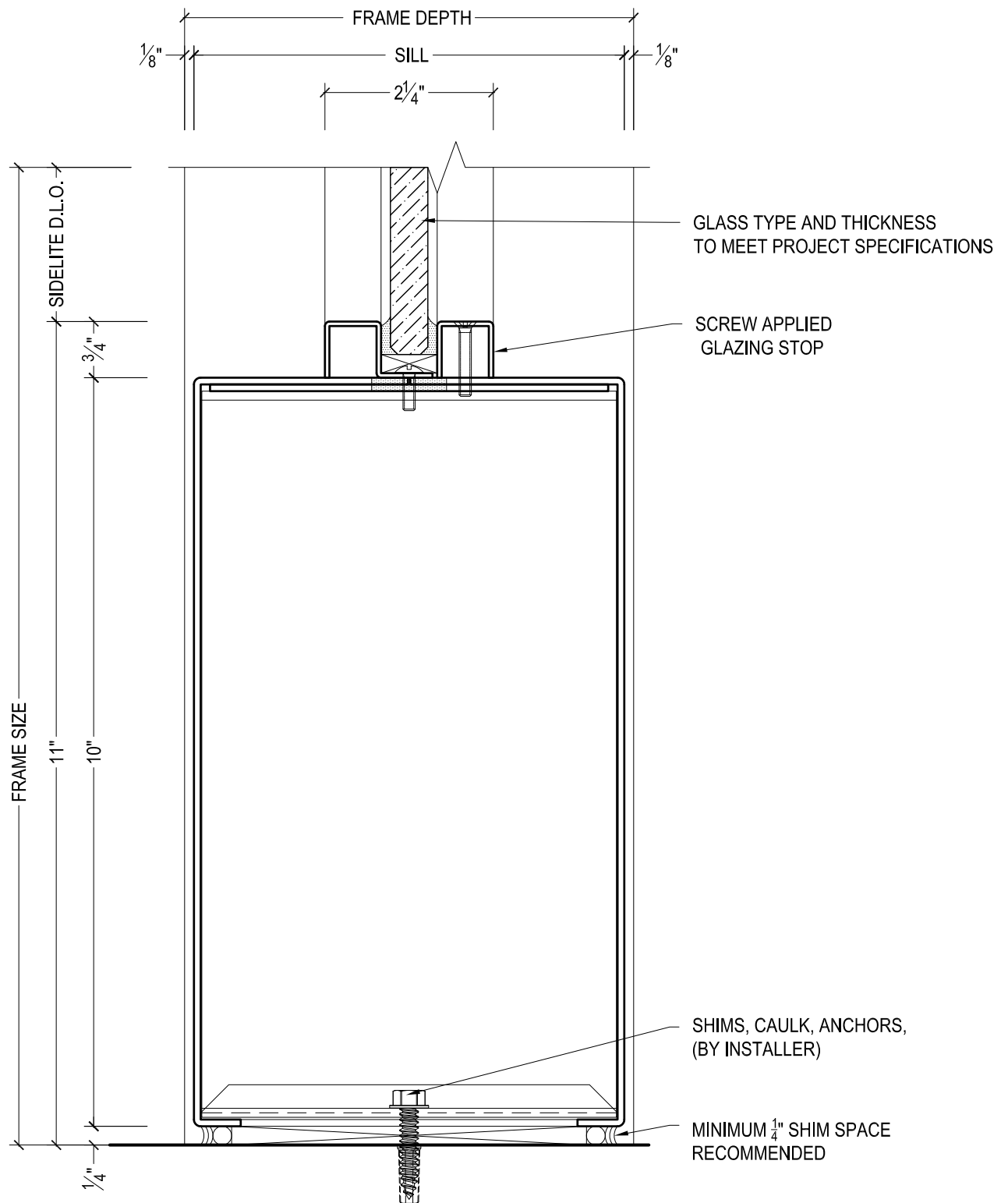
DAWSON DOORS

825 ALLEN ST • JAMESTOWN, NY 14701 • (716) 664-3811 • WWW.DAWSONDOORS.COM

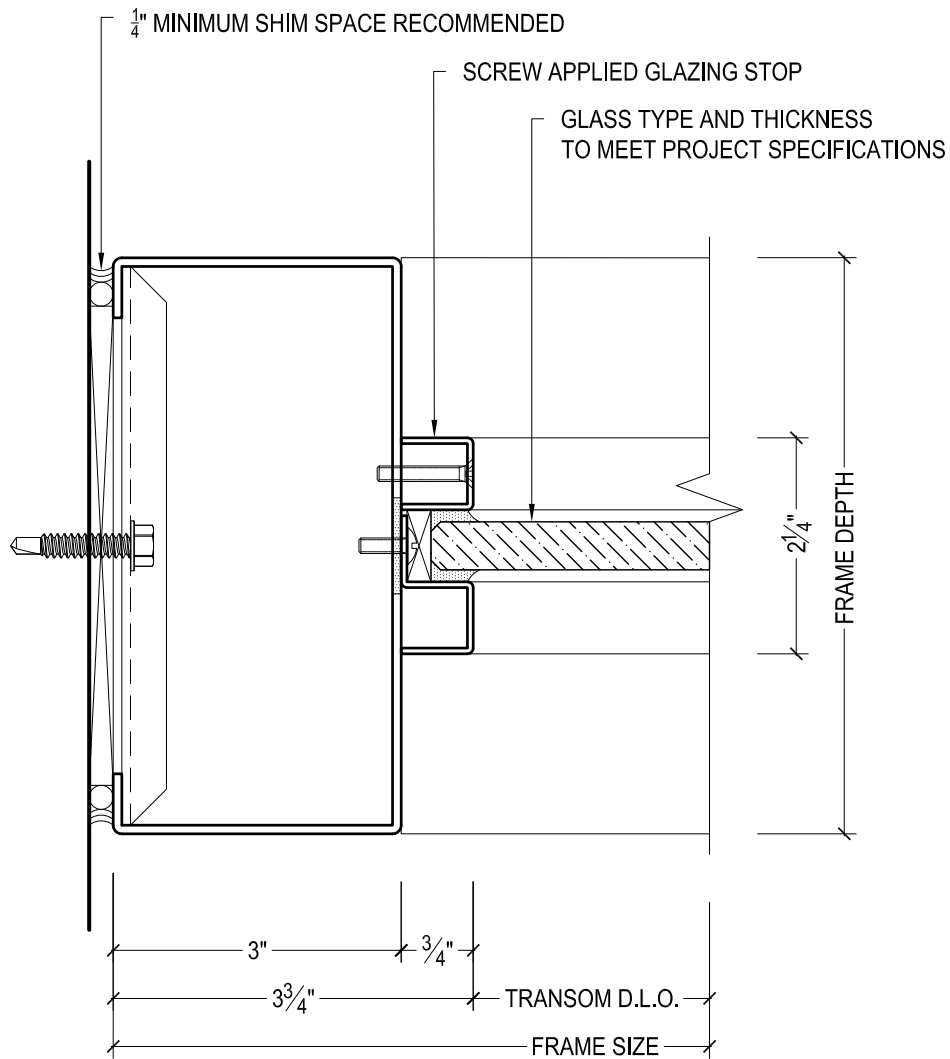
DRAWN BY:	JBL	DRAWING DATE:	12/4/19
SERIES #:	005-BH	DRAWING #:	5BHTHFS50
DESCRIPTION:	HEADER / TOP RAIL - DESIGNER SERIES BUTT HUNG OR CONTINUOUS HINGE DOORS WITH TRANSOM ABOVE WITH APPLIED STOPS		



DRAWN BY:	JBL	DRAWING DATE:	12/4/19
SERIES #:	005-BH	DRAWING #:	FXXTZAS50
DESCRIPTION:	SIDELITE BELOW & TRANSOM ABOVE WITH APPLIED STOPS		



DRAWN BY:	JBL	DRAWING DATE:	12/4/19
SERIES #:	005-BH	DRAWING #:	FXXSSAS50
DESCRIPTION:	SIDELITE SILL WITH APPLIED STOPS		

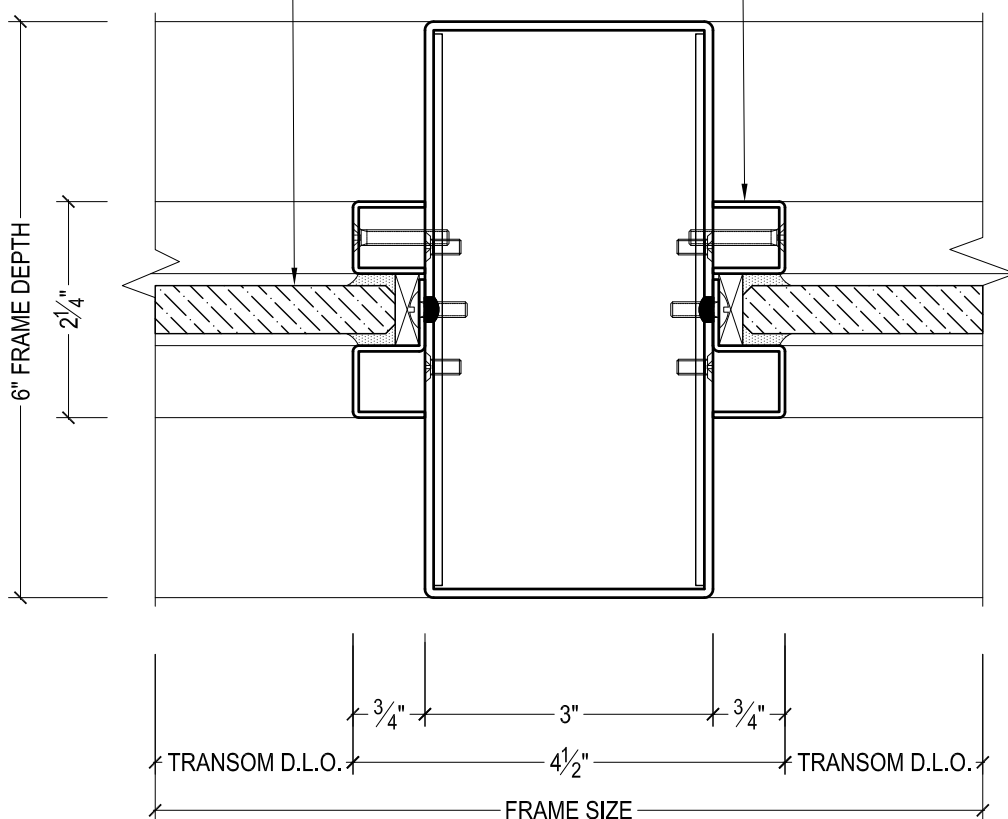


825 ALLEN ST • JAMESTOWN, NY 14701 • (716) 664-3811 • WWW.DAWSONDOORS.COM

DRAWN BY:	JBL	DRAWING DATE:	12/4/19
SERIES #:	005-BH	DRAWING #:	FXXTWAS50
DESCRIPTION:	TRANSOM JAMB WITH APPLIED STOPS		

GLASS TYPE AND THICKNESS
TO MEET PROJECT SPECIFICATIONS

SCREW APPLIED
GLAZING STOP



DAWSON DOORS

825 ALLEN ST • JAMESTOWN, NY 14701 • (716) 664-3811 • WWW.DAWSONDOORS.COM

DRAWN BY:

JBL

DRAWING DATE:

12/4/19

SERIES #:

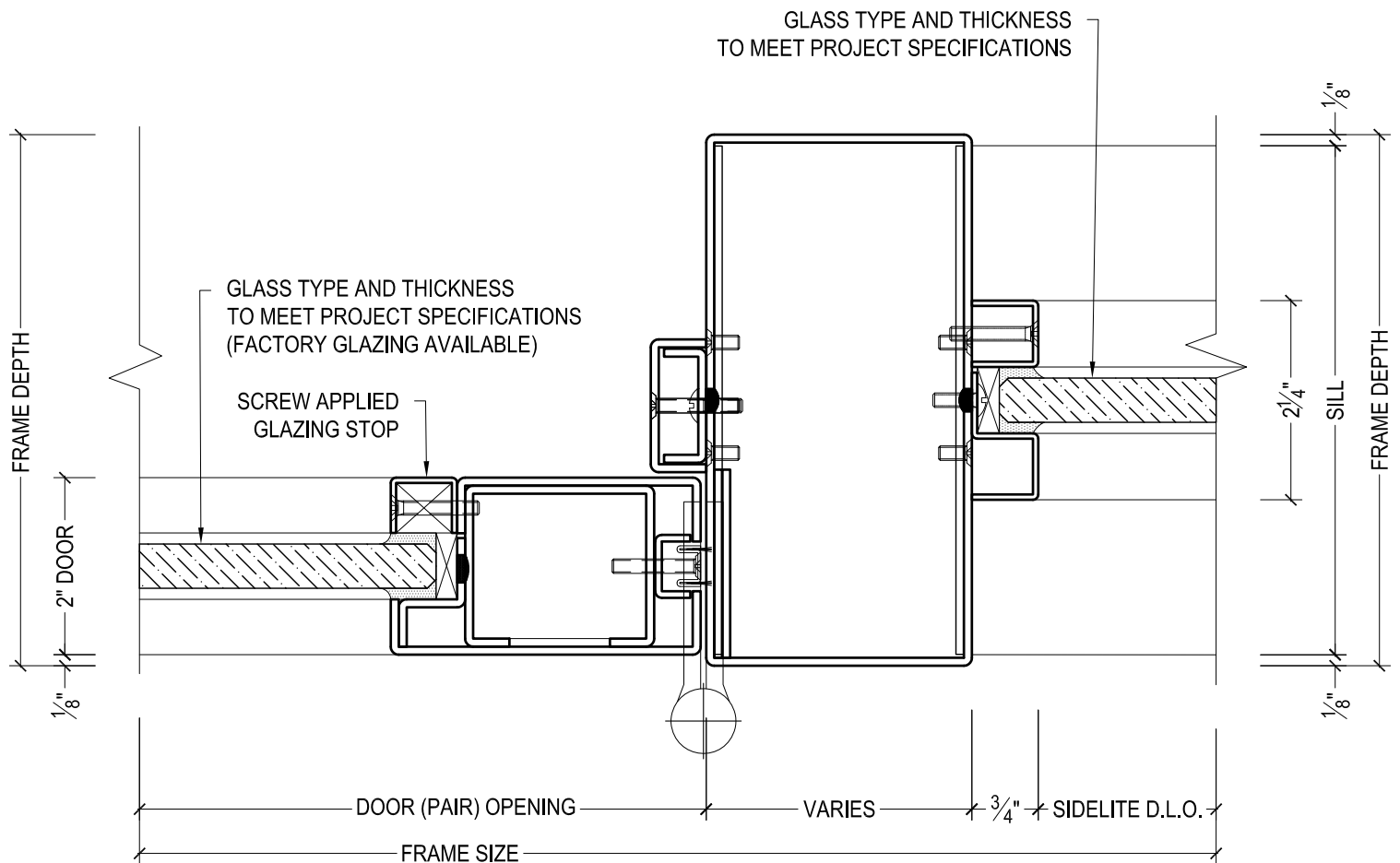
005-BH

DRAWING #:

FXXTVAS50

DESCRIPTION:

TRANSOM MULLION WITH APPLIED STOPS



DAWSON DOORS

825 ALLEN ST • JAMESTOWN, NY 14701 • (716) 664-3811 • WWW.DAWSONDOORS.COM

DRAWN BY:	JBL	DRAWING DATE:	12/4/19
SERIES #:	005-BH	DRAWING #:	5BHSMAS50
DESCRIPTION:	JAMB / PIVOT STILE / SIDELITE MULLION - DESIGNER SERIES BUTT HUNG OR CONTINUOUS HINGE DOORS WITH FIXED FLAT GLAZING. JAMB TREATED AS SIDELITE MULLION		