

1. MATERIALS & FINISHES

- A. STAINLESS STEEL, BRASS, AND BRONZE ARE AVAILABLE IN #8 MIRROR, #6 SATIN, #4 SATIN, OR NON-DIRECTIONAL (ANGEL HAIR) FINISH. DAWSON DOES NOT PROVIDE LACQUERED FINISH ON BRASS OR BRONZE PRODUCTS. WET PAINTED OR POWDER COATED DOORS WILL BE FABRICATED FROM GALVANNEALED STEEL. CONSULT FACTORY FOR CUSTOM FINISHES.
- B. STAINLESS STEEL HERCULITE SERIES DOOR RAILS ARE FABRICATED WITH 13 GA FINISH MATERIALS AND 13 GA INTERNAL COMPONENTS.
- C. PAINTED HERCULITE SERIES DOOR RAILS ARE FABRICATED WITH 13 GA GALVANNEALED STEEL FINISH MATERIALS AND 13 GA GALVANNEALED STEEL INTERNAL COMPONENTS.
- D. BRASS AND BRONZE HERCULITE SERIES DOOR RAILS ARE FABRICATED WITH .090" FINISH MATERIALS AND .090" INTERNAL COMPONENTS.
- E. STAINLESS STEEL AND PAINTED GALVANNEALED STEEL FRAMES AND DOOR STOPS TO BE FABRICATED FROM 13 GA MATERIAL. SPACER JAMBS ON EXPOSED HINGE TUBE OPENINGS AND TRANSOM AND SIDELITE GLASS STOPS TO BE FABRICATED FROM 14 GA MATERIAL.
- F. BRASS AND BRONZE FRAMES AND DOOR STOPS TO BE FABRICATED FROM .090" MATERIAL. SPACER JAMBS ON EXPOSED HINGE TUBE OPENINGS AND TRANSOM AND SIDELITE GLASS STOPS TO BE FABRICATED FROM .060" MATERIAL.
- G. STAINLESS STEEL AND PAINTED GALVANNEALED STEEL HINGE TUBES ARE CLAD IN 16 GA MATERIAL. NOTE THAT BALANCED ARMS ARE ONLY AVAILABLE IN STAINLESS STEEL OR BRASS FINISHES.
- H. BRASS AND BRONZE EXPOSED HINGE TUBES ARE CLAD IN .060" MATERIAL. NOTE THAT BALANCED ARMS ARE ONLY AVAILABLE IN STAINLESS STEEL OR BRASS FINISHES.

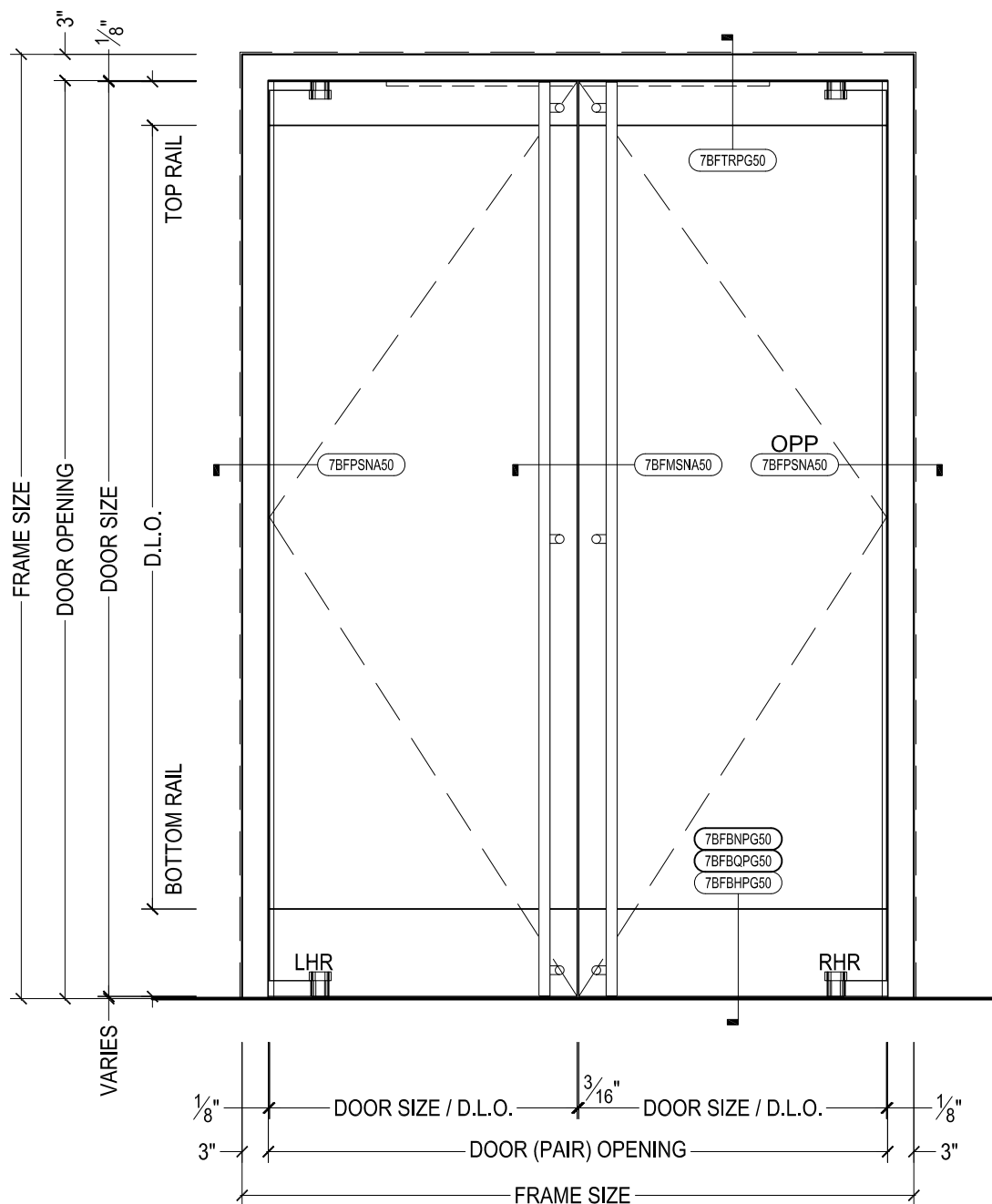
2. STANDARD DIMENSIONS

- A. HERCULITE SERIES BALANCED DOORS HAVE A MINIMUM TOP RAIL OF 5 $\frac{1}{4}$ ". HERCULITE DOORS (ALL GLASS DOORS) DO NOT HAVE STILES. ALL DOORS HAVE A STANDARD BOTTOM RAIL DIMENSION OF 10" TO MEET ADA CODE. MINIMUM BOTTOM RAIL OF 7" WILL NOT MEET ADA. MINIMUM DIMENSIONS SUBJECT TO CHANGE BASED ON HARDWARE - CONSULT FACTORY.
- B. FRAME PROFILE STANDARD DIMENSIONS ARE 3" FACE x 6" DEPTH. STANDARD HEADER HEIGHT (FACE) FOR AUTO OPERATED BALANCED DOORS IS 6". CONSULT FACTORY FOR CUSTOM SIZES.
- C. BALANCED DOOR UNDERCUT IS AVAILABLE AS $\frac{1}{4}$ ", $\frac{1}{2}$ ", OR $\frac{3}{4}$ ". UNDERCUT IS DRIVEN BY THRESHOLD HEIGHT, THOUGH CAN BE SPECIFIED OTHERWISE.
- D. HORIZONTAL DOOR STOPS TO STOP SHORT ON PIVOT SIDE FOR SWING CLEARANCE. DOOR STOPS FABRICATED $\frac{5}{8}$ " HIGH STANDARD, VARYING WITH HARDWARE REQUIREMENTS. WIDTH VARIES AS REQUIRED. CONSULT FACTORY FOR CUSTOM SIZES AND PROFILES.
- E. MINIMUM BALANCED DOOR WIDTH TO MEET ADA MINIMUM OF 32" CLEAR OPENING IS 35 $\frac{3}{16}$ ". MINIMUM AUTO OPERATED BALANCED DOOR WIDTH IS 36" DUE TO HARDWARE LIMITATIONS.
- F. DAWSON STRONGLY RECOMMENDS THE USE OF FULL HEIGHT PULLS THAT MOUNT TO THE TOP RAIL AND BOTTOM RAIL, WITH AN INTERMEDIATE POST TO MOUNT THRU THE GLASS TO HELP TIE HERCULITE DOORS TOGETHER.



825 ALLEN ST • JAMESTOWN, NY 14701 • (716) 664-3811 • WWW.DAWSONDOORS.COM

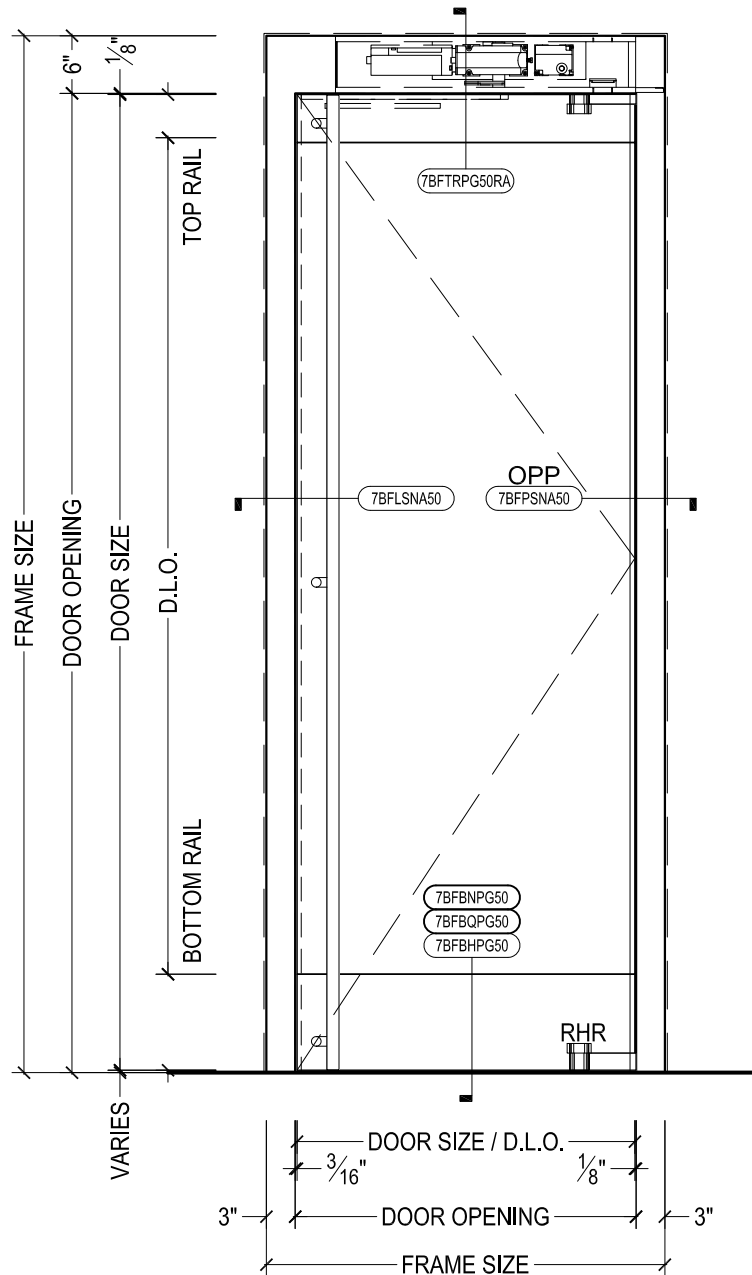
DRAWN BY:	AG	DRAWING DATE:	10/15/19
SERIES #:	007-BAL	DRAWING #:	NOTES 1
DESCRIPTION:	GENERAL NOTES FOR 007 HERCULITE SERIES DOORS WITH BALANCED HARDWARE		



DAWSON DOORS

825 ALLEN ST • JAMESTOWN, NY 14701 • (716) 664-3811 • WWW.DAWSONDOORS.COM

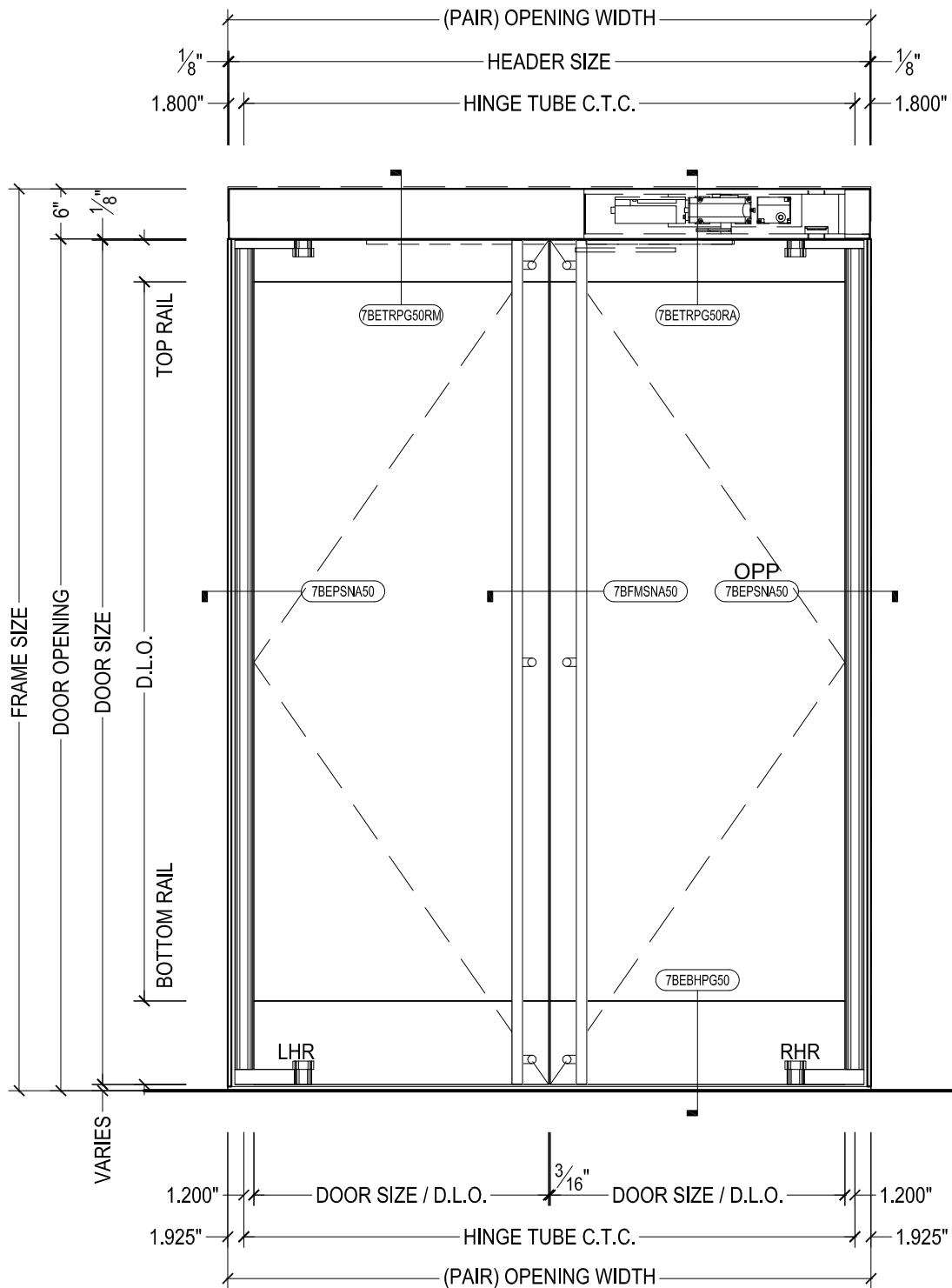
DRAWN BY:	AG	DRAWING DATE:	10/15/19
SERIES #:	007-BAL	DRAWING #:	EL-MAN-PAIR
DESCRIPTION:	ELEVATION - ALL GLASS HERCULITE SERIES BALANCED DOORS		



DAWSON DOORS

825 ALLEN ST • JAMESTOWN, NY 14701 • (716) 664-3811 • WWW.DAWSONDOORS.COM

DRAWN BY:	AG	DRAWING DATE:	10/15/19
SERIES #:	007-BAL	DRAWING #:	EL-AUTO-SIN
DESCRIPTION:	ELEVATION - ALL GLASS HERCULITE SERIES BALANCED DOOR WITH RECORD AUTO OPERATOR		

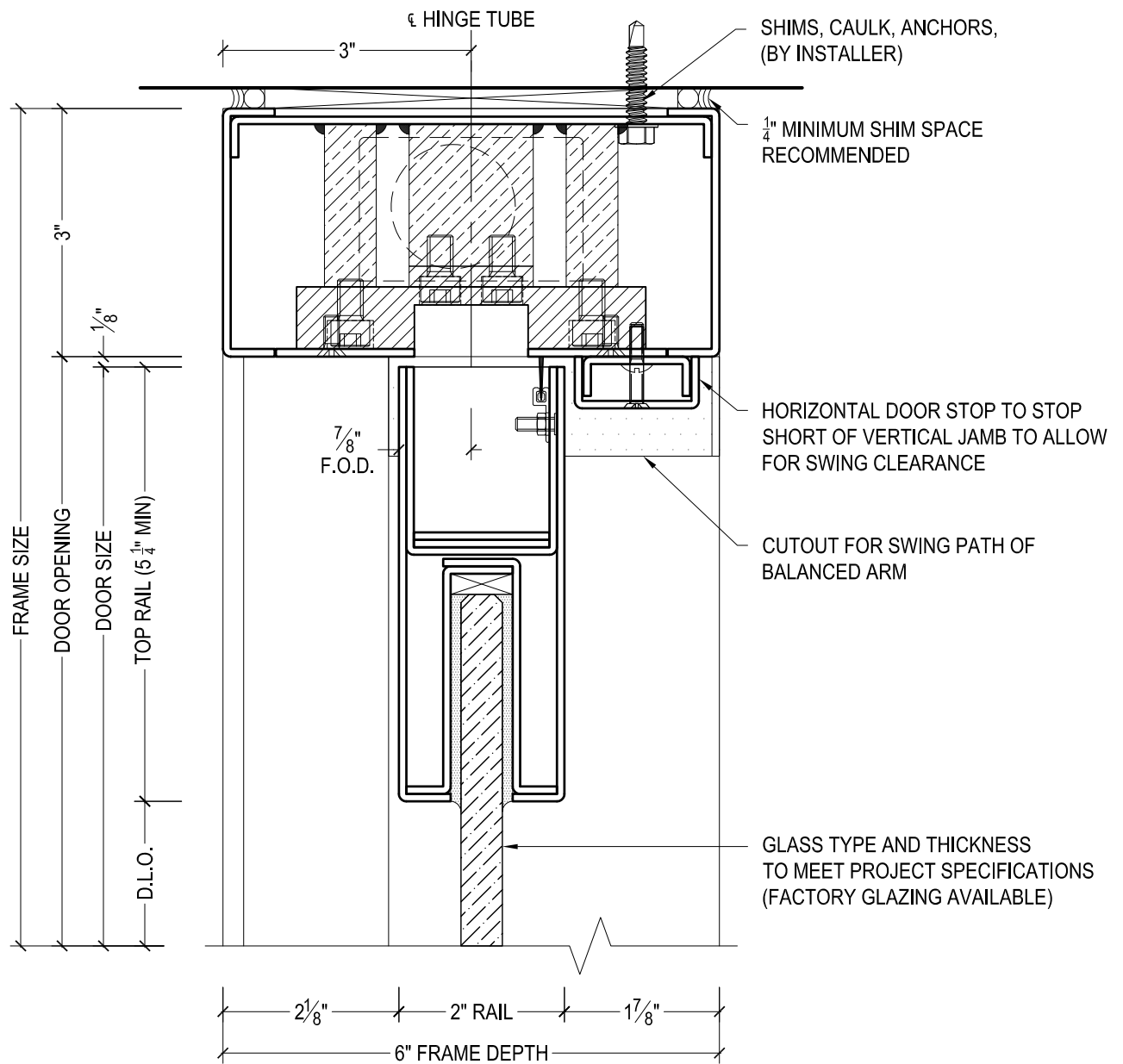


DAWSON DOORS

825 ALLEN ST • JAMESTOWN, NY 14701 • (716) 664-3811 • WWW.DAWSONDOORS.COM

DRAWN BY:	AG	DRAWING DATE:	10/15/19
SERIES #:	007-BAL	DRAWING #:	EL-EHT-PAIR
DESCRIPTION:	ELEVATION - ALL GLASS HERCULITE SERIES BALANCED DOORS WITH RECORD AUTO OPERATOR AND EXPOSED HINGE TUBES		

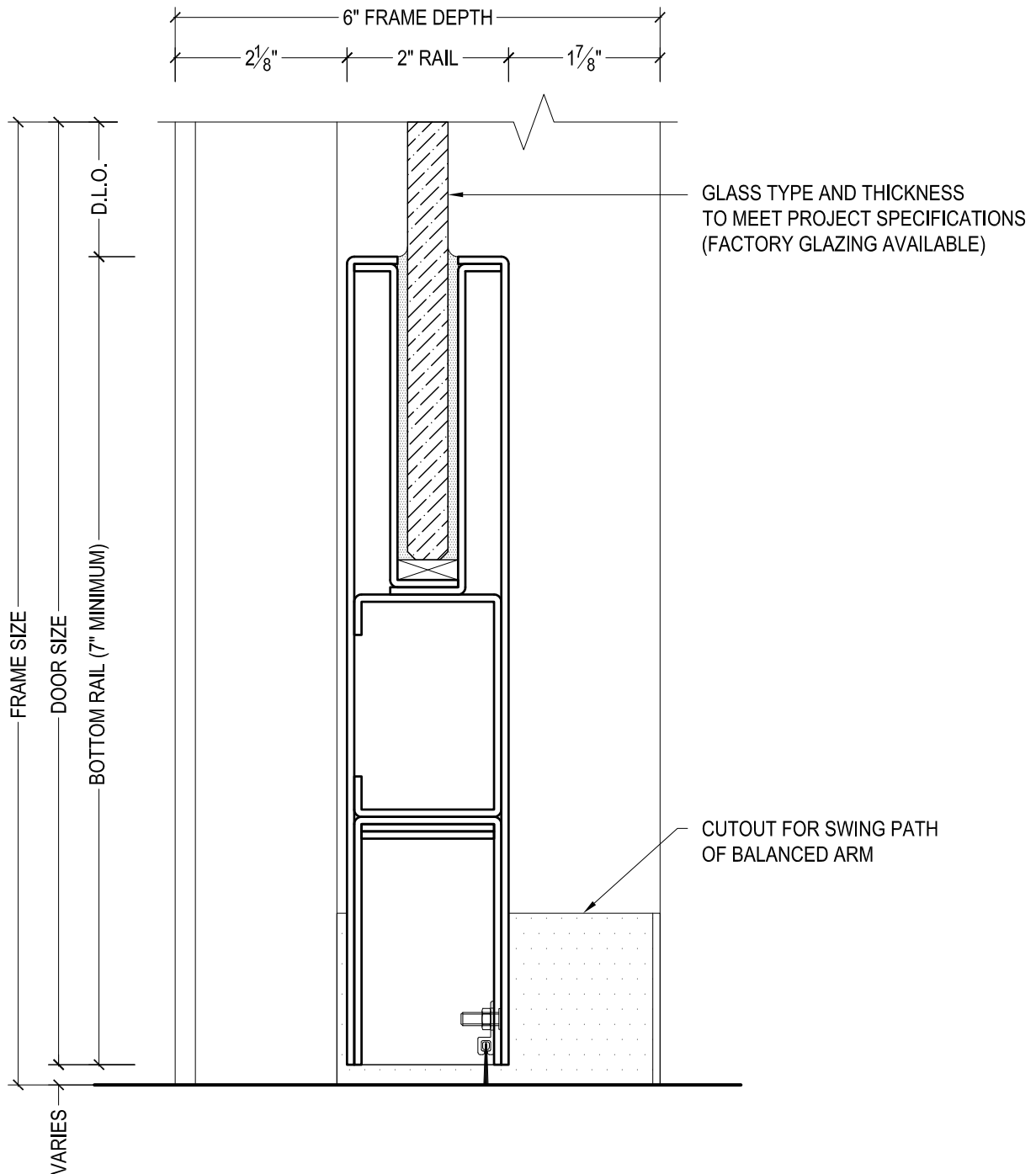
DAWSON DOORS



DAWSON DOORS

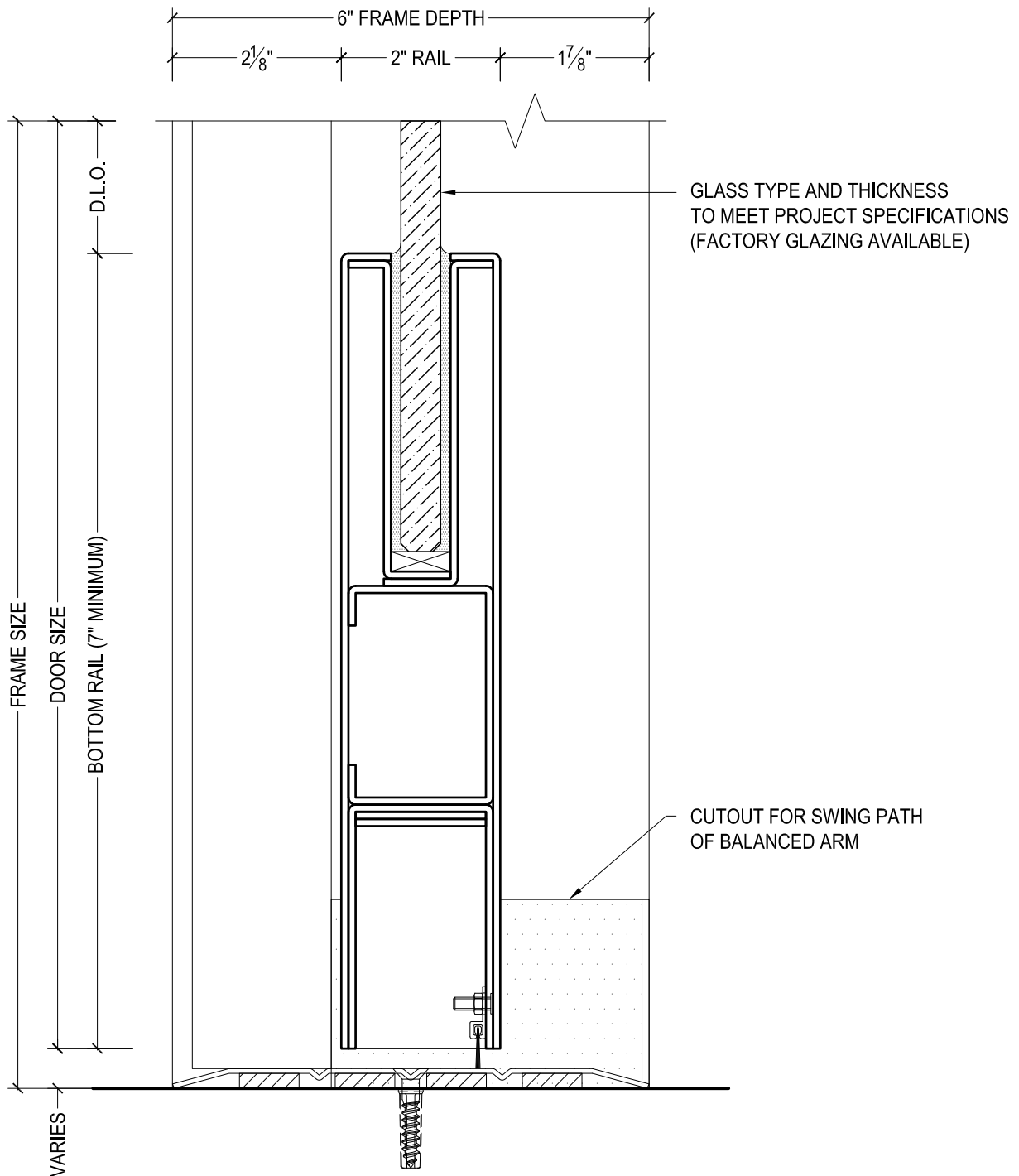
825 ALLEN ST • JAMESTOWN, NY 14701 • (716) 664-3811 • WWW.DAWSONDOORS.COM

DRAWN BY:	AG	DRAWING DATE:	10/15/19
SERIES #:	007-BAL	DRAWING #:	7BFTRPG50
DESCRIPTION:	HEADER / TOP RAIL - HERCULITE SERIES BALANCED DOORS		



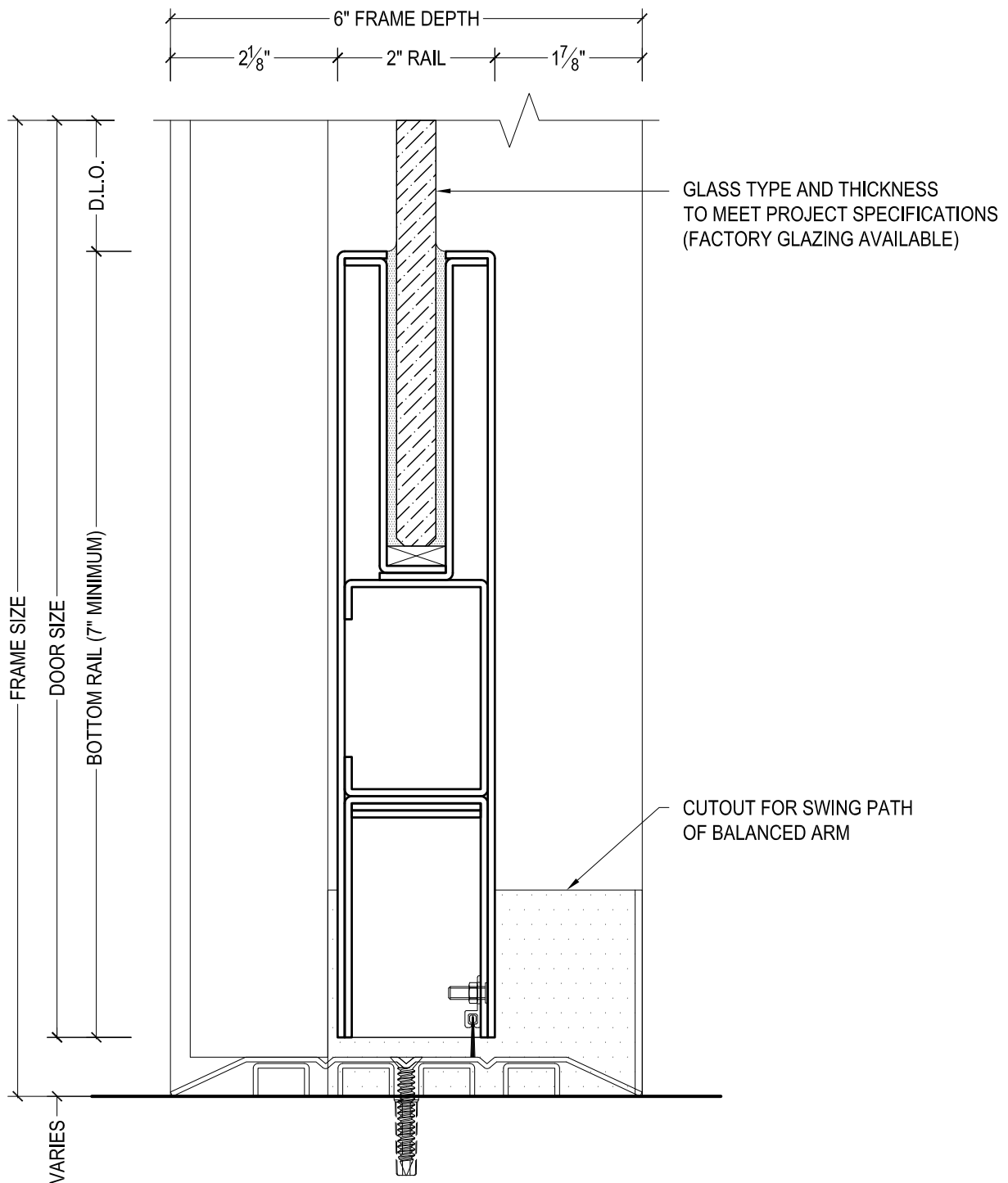
825 ALLEN ST • JAMESTOWN, NY 14701 • (716) 664-3811 • WWW.DAWSONDOORS.COM

DRAWN BY:	AG	DRAWING DATE:	10/15/19
SERIES #:	007-BAL	DRAWING #:	7BFBNPG50
DESCRIPTION:	BOTTOM RAIL - HERCULITE SERIES BALANCED DOORS - NO THRESHOLD -		



825 ALLEN ST • JAMESTOWN, NY 14701 • (716) 664-3811 • WWW.DAWSONDOORS.COM

DRAWN BY:	AG	DRAWING DATE:	10/15/19
SERIES #:	007-BAL	DRAWING #:	7BFBQPG50
DESCRIPTION:	BOTTOM RAIL - HERCULITE SERIES BALANCED DOORS - 1/4" THRESHOLD -		



DAWSON DOORS

825 ALLEN ST • JAMESTOWN, NY 14701 • (716) 664-3811 • WWW.DAWSONDOORS.COM

DRAWN BY:

AG

DRAWING DATE:

10/15/19

SERIES #:

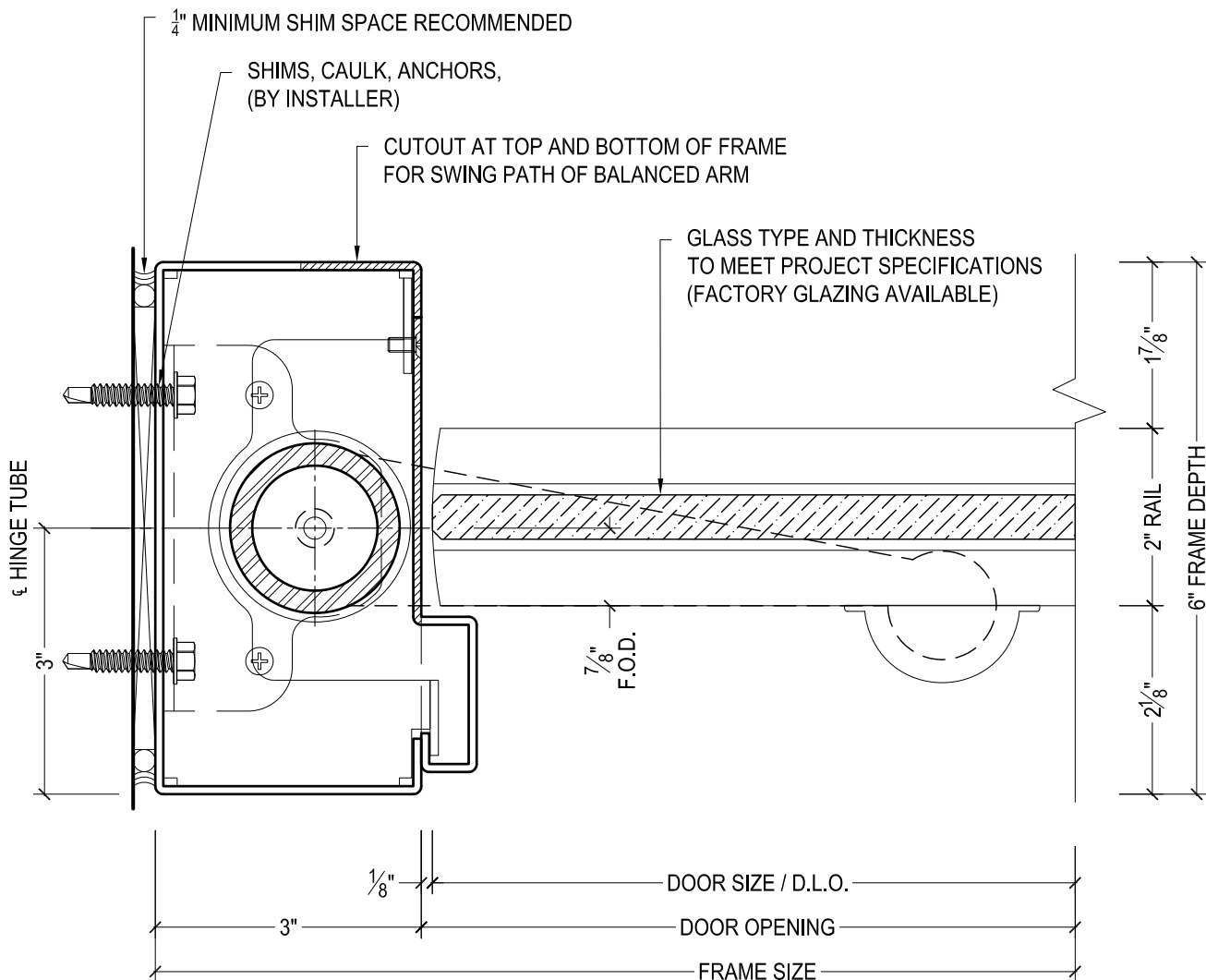
007-BAL

DRAWING #:

7BFBHPG50

DESCRIPTION:

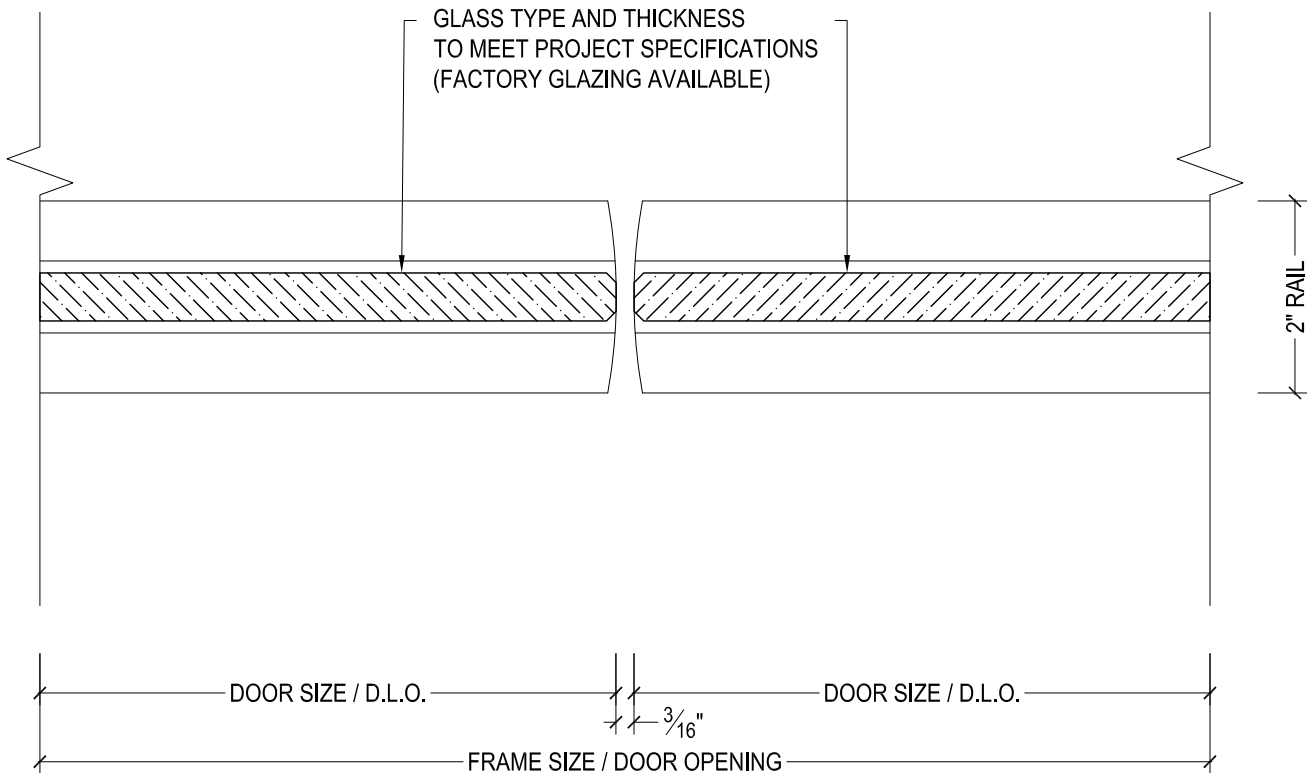
BOTTOM RAIL - HERCULITE SERIES BALANCED DOORS
- 1/2" THRESHOLD -



DAWSON DOORS

825 ALLEN ST • JAMESTOWN, NY 14701 • (716) 664-3811 • WWW.DAWSONDOORS.COM

DRAWN BY:	AG	DRAWING DATE:	10/15/19
SERIES #:	007-BAL	DRAWING #:	7BFPSNA50
DESCRIPTION:	PIVOT JAMB / STILE - HERCULITE SERIES BALANCED DOORS		



825 ALLEN ST • JAMESTOWN, NY 14701 • (716) 664-3811 • WWW.DAWSONDOORS.COM

DRAWN BY:

AG

DRAWING DATE:

10/15/19

SERIES #:

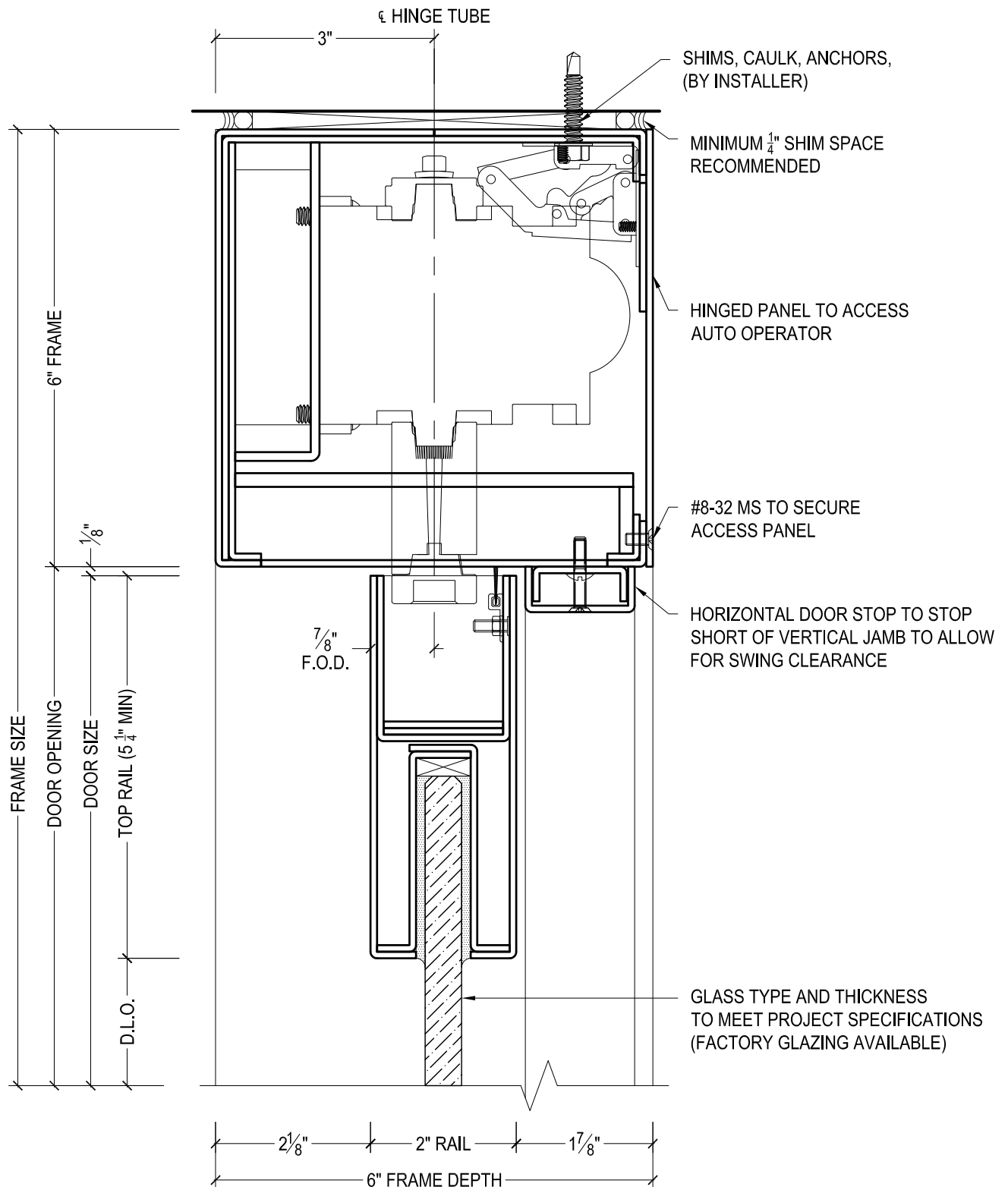
007-BAL

DRAWING #:

7BFMSNA50

DESCRIPTION:

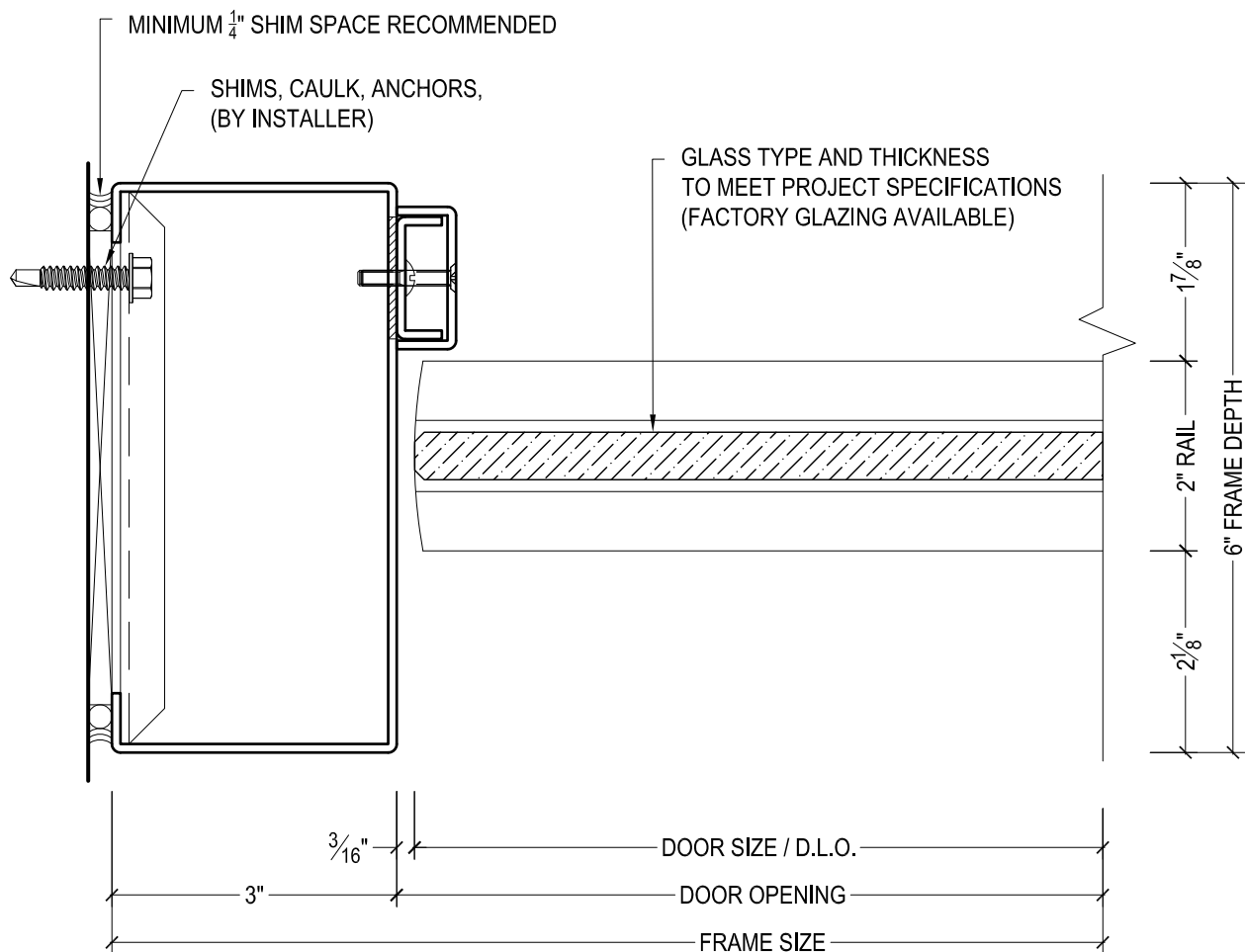
MEETING STILES - HERCULITE SERIES BALANCED DOORS



DAWSON DOORS

825 ALLEN ST • JAMESTOWN, NY 14701 • (716) 664-3811 • WWW.DAWSONDOORS.COM

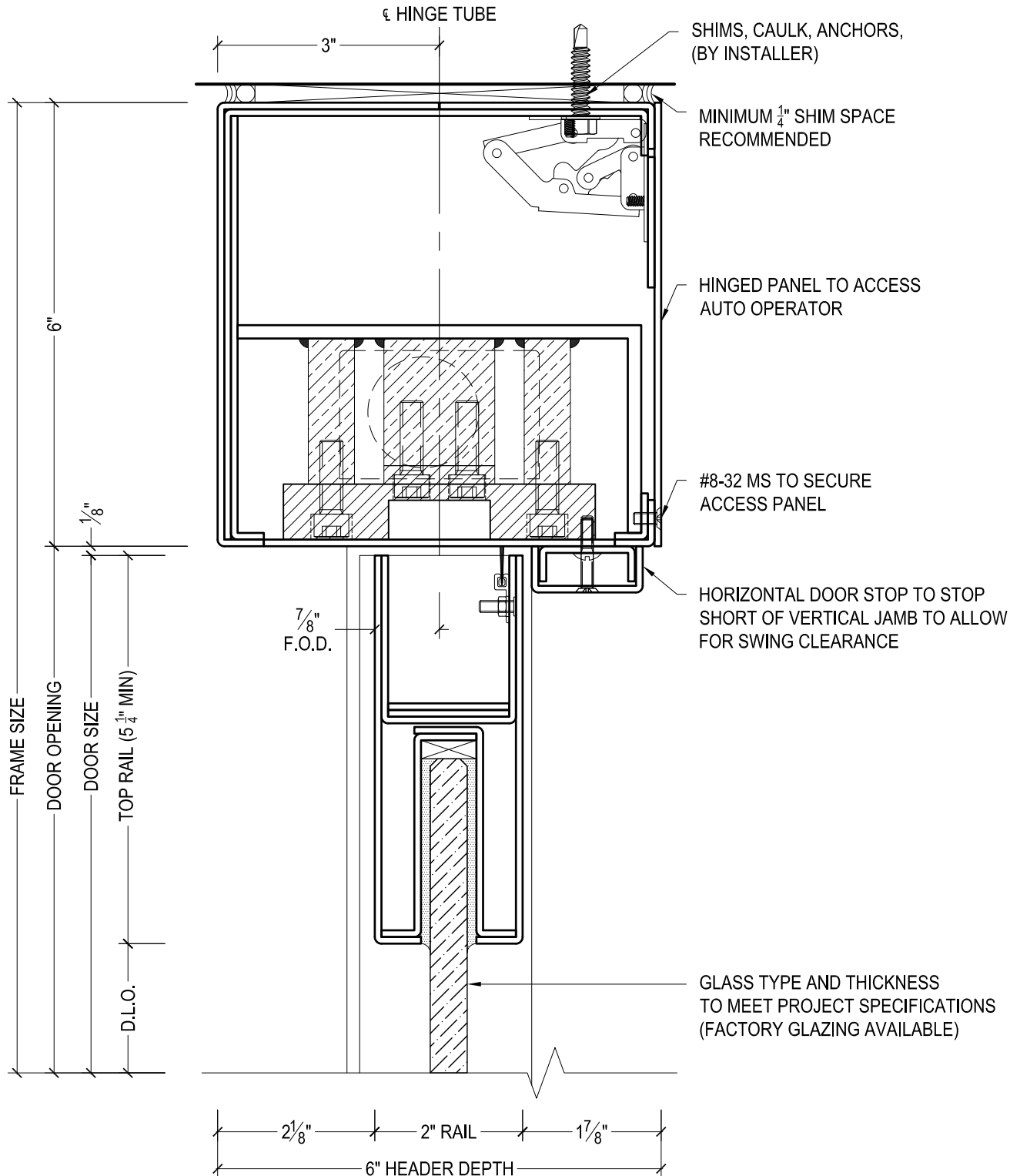
DRAWN BY:	AG	DRAWING DATE:	10/15/19
SERIES #:	007-BAL	DRAWING #:	7BFTRPG50RA
DESCRIPTION:	HEADER / TOP RAIL - HERCULITE SERIES BALANCED DOORS WITH RECORD AUTO OPERATOR		



DAWSON DOORS

825 ALLEN ST • JAMESTOWN, NY 14701 • (716) 664-3811 • WWW.DAWSONDOORS.COM

DRAWN BY:	AG	DRAWING DATE:	10/15/19
SERIES #:	007-BAL	DRAWING #:	7BFLSNA50
DESCRIPTION:	LOCK JAMB / STILE - HERCULITE SERIES BALANCED DOORS		



DAWSON DOORS

825 ALLEN ST • JAMESTOWN, NY 14701 • (716) 664-3811 • WWW.DAWSONDOORS.COM

DRAWN BY:

AG

DRAWING DATE:

10/15/19

SERIES #:

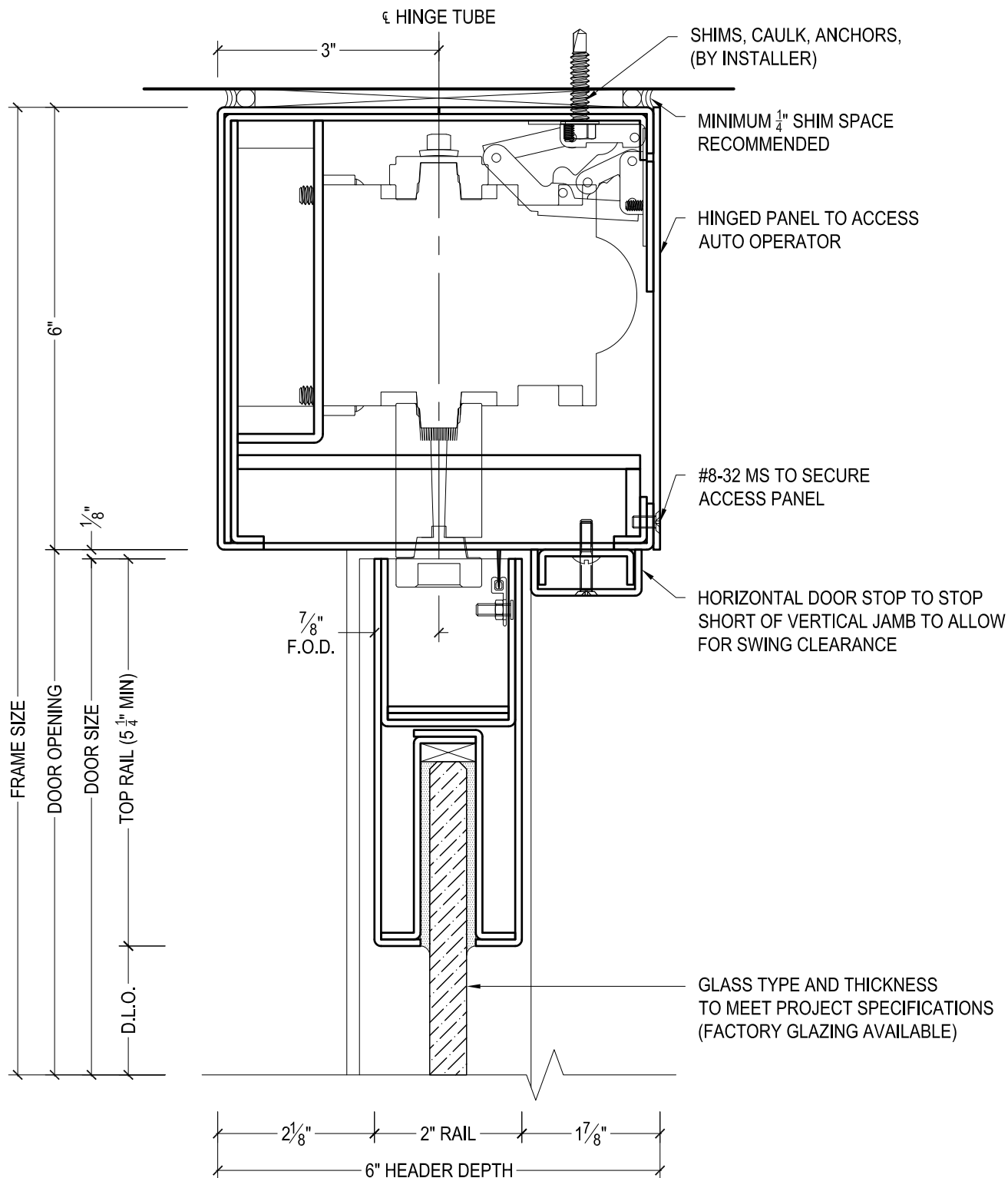
007-BAL

DRAWING #:

7BETRPG50RM

DESCRIPTION:

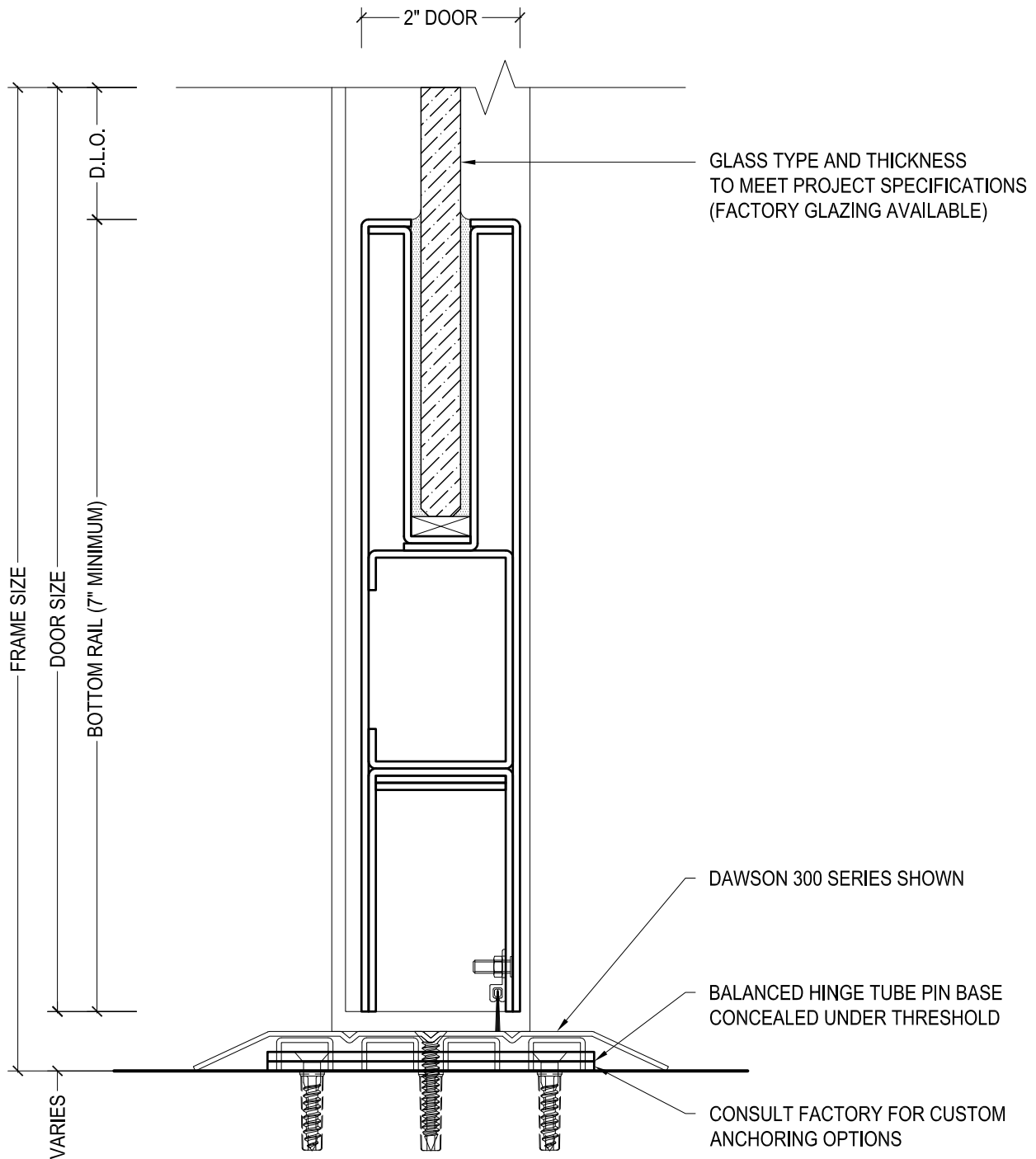
HEADER / TOP RAIL - HERCULITE SERIES BALANCED DOORS ON MANUAL DOOR LEAF WITH 6" TALL HEADER FOR AUTO OPERATOR



DAWSON DOORS

825 ALLEN ST • JAMESTOWN, NY 14701 • (716) 664-3811 • WWW.DAWSONDOORS.COM

DRAWN BY:	AG	DRAWING DATE:	10/15/19
SERIES #:	007-BAL	DRAWING #:	7BETRPG50RA
DESCRIPTION:	HEADER / TOP RAIL - HERCULITE SERIES BALANCED DOORS ON AUTO OPERATED DOOR LEAF		



DAWSON DOORS

825 ALLEN ST • JAMESTOWN, NY 14701 • (716) 664-3811 • WWW.DAWSONDOORS.COM

DRAWN BY:

AG

DRAWING DATE:

10/15/19

SERIES #:

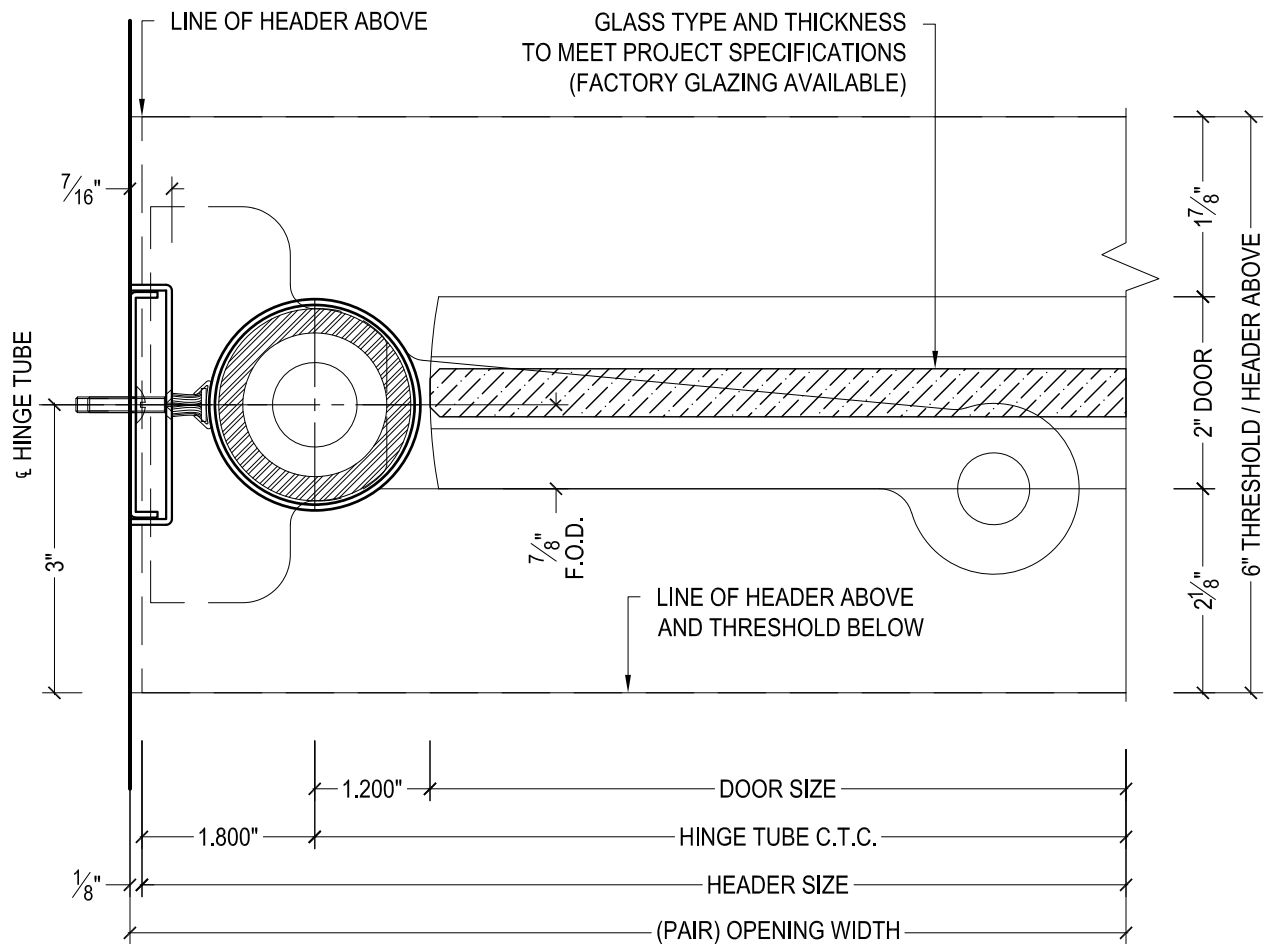
007-BAL

DRAWING #:

7BEBHPG50

DESCRIPTION:

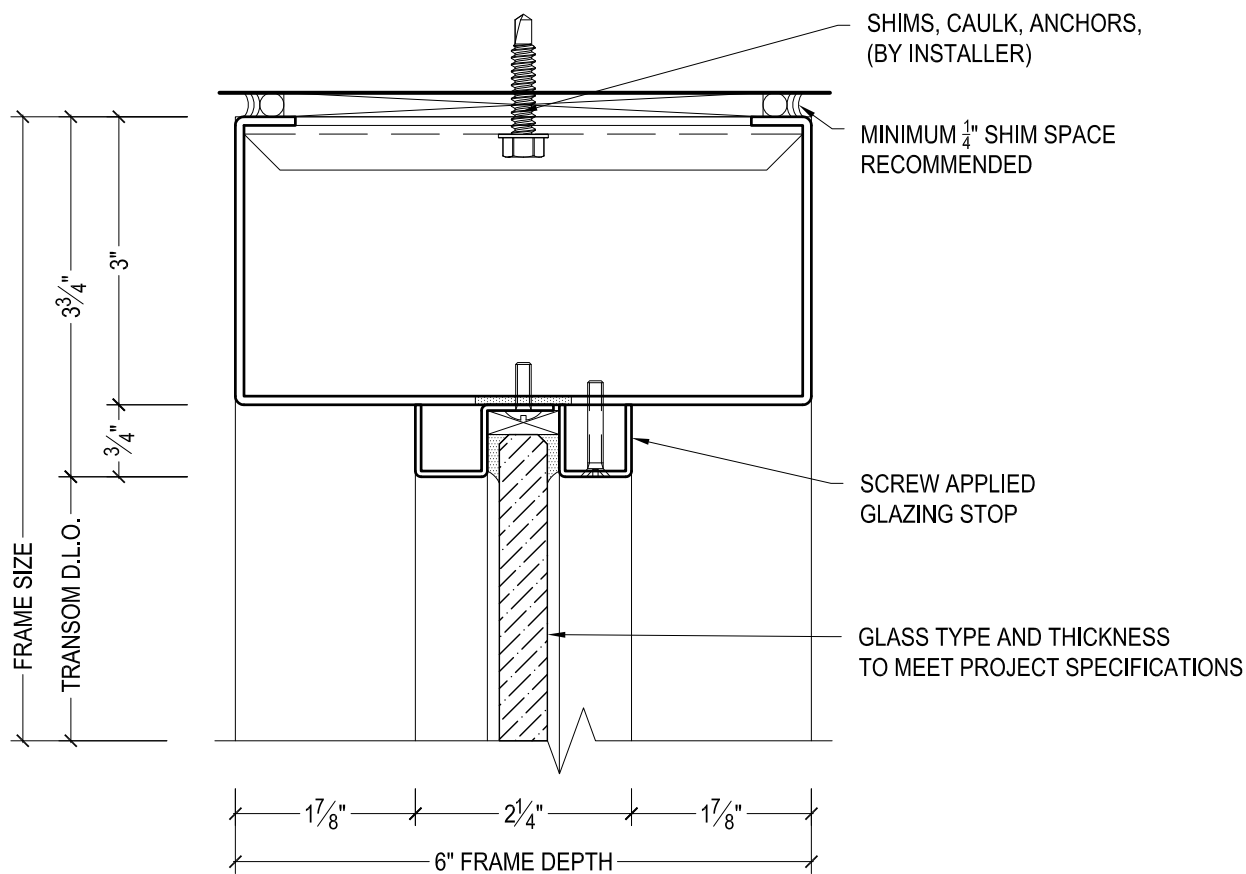
BOTTOM RAIL - HERCULITE SERIES BALANCED DOORS,
DAWSON 300 SERIES THRESHOLD SHOWN TO CONCEAL
HINGE TUBE BASE



DAWSON DOORS

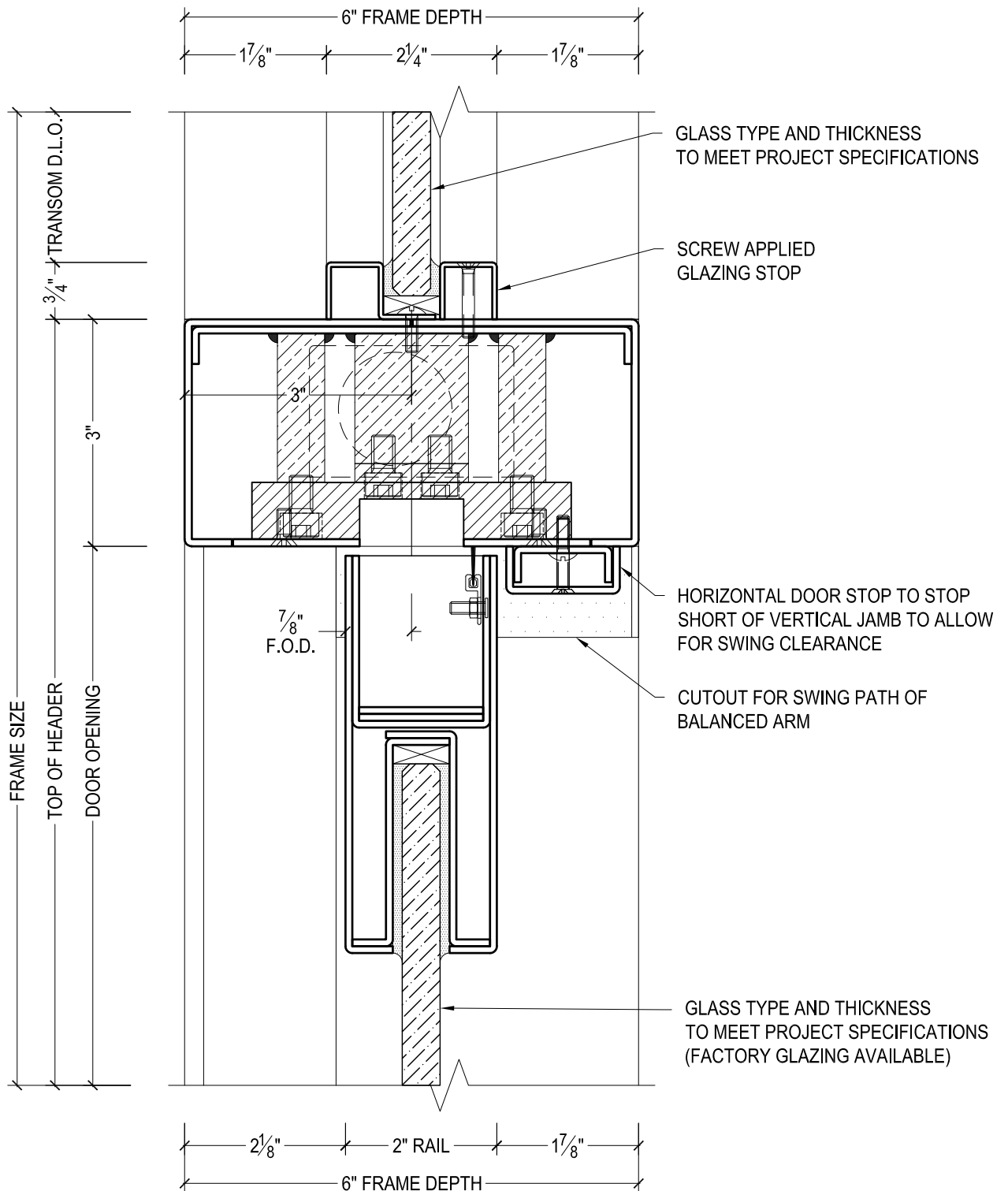
825 ALLEN ST • JAMESTOWN, NY 14701 • (716) 664-3811 • WWW.DAWSONDOORS.COM

DRAWN BY:	AG	DRAWING DATE:	10/15/19
SERIES #:	007-BAL	DRAWING #:	7BEPSNA50
DESCRIPTION:	PIVOT STILE - HERCULITE SERIES BALANCED DOORS WITH EXPOSED HINGE TUBE		

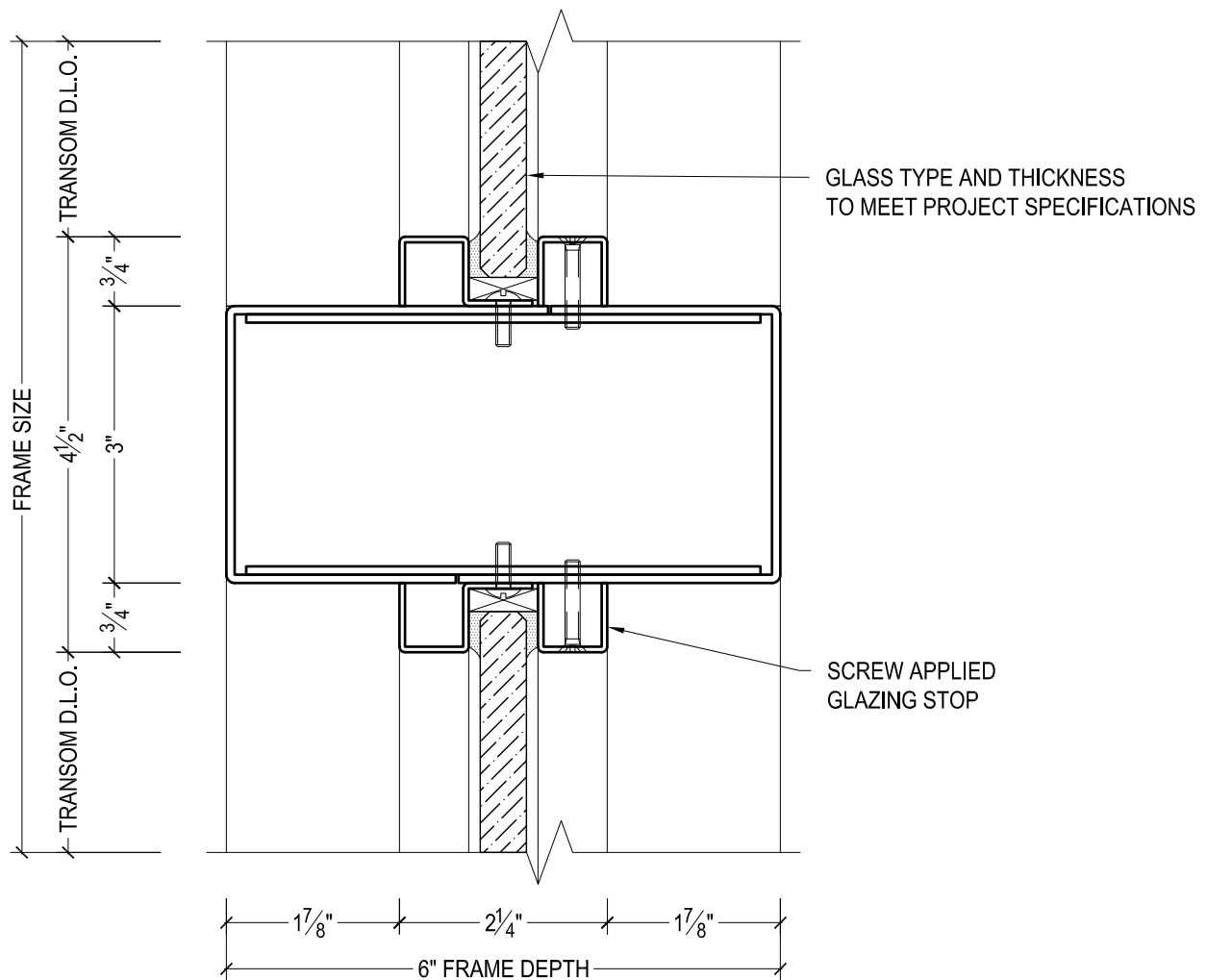


825 ALLEN ST • JAMESTOWN, NY 14701 • (716) 664-3811 • WWW.DAWSONDOORS.COM

DRAWN BY:	AG	DRAWING DATE:	10/15/19
SERIES #:	007-BAL	DRAWING #:	FXXSHAS50
DESCRIPTION:	GENERIC FRAME DETAIL - TRANSOM HEADER WITH APPLIED STOPS		

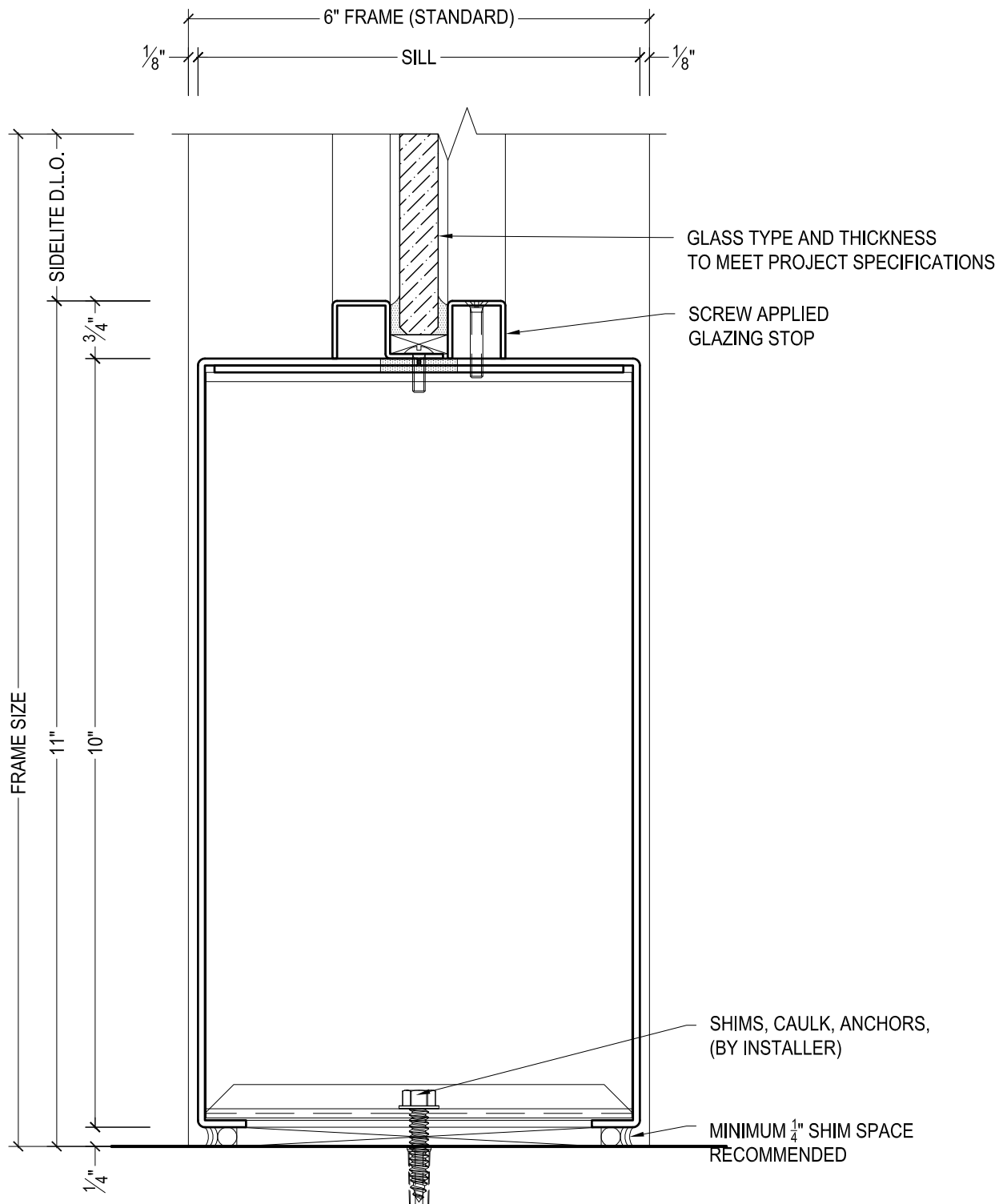


DRAWN BY:	AG	DRAWING DATE:	10/15/19
SERIES #:	007-BAL	DRAWING #:	7BFTHPG50
DESCRIPTION:	HEADER / TOP RAIL - HERCULITE SERIES BALANCED DOORS WITH TRANSOM ABOVE WITH APPLIED STOPS		



825 ALLEN ST • JAMESTOWN, NY 14701 • (716) 664-3811 • WWW.DAWSONDOORS.COM

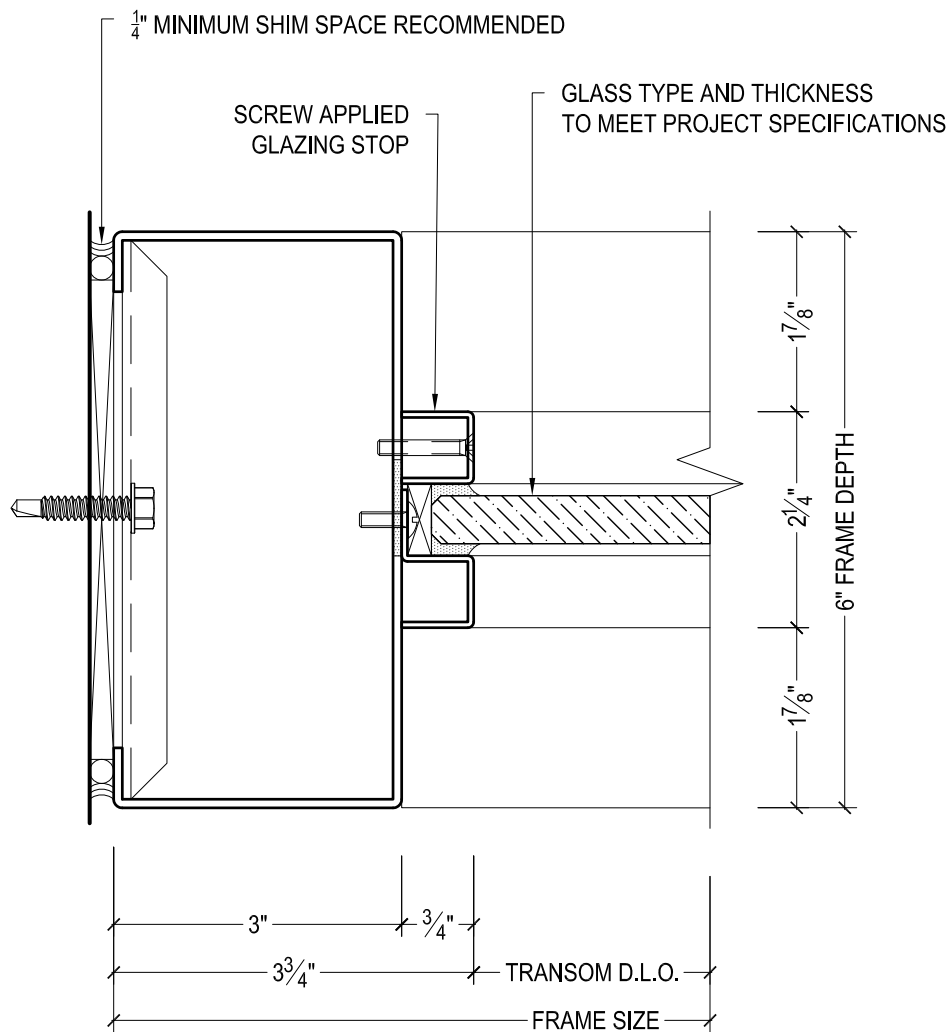
DRAWN BY:	AG	DRAWING DATE:	10/15/19
SERIES #:	007-BAL	DRAWING #:	FXXSCAS50
DESCRIPTION:	GENERIC FRAME DETAIL - TRANSOM HEADER WITH APPLIED STOPS		



DAWSON DOORS

825 ALLEN ST • JAMESTOWN, NY 14701 • (716) 664-3811 • WWW.DAWSONDOORS.COM

DRAWN BY:	AG	DRAWING DATE:	10/15/19
SERIES #:	007-BAL	DRAWING #:	FXXSSAS50
DESCRIPTION:	GENERIC FRAME DETAIL - TRANSOM HEADER WITH APPLIED STOPS		

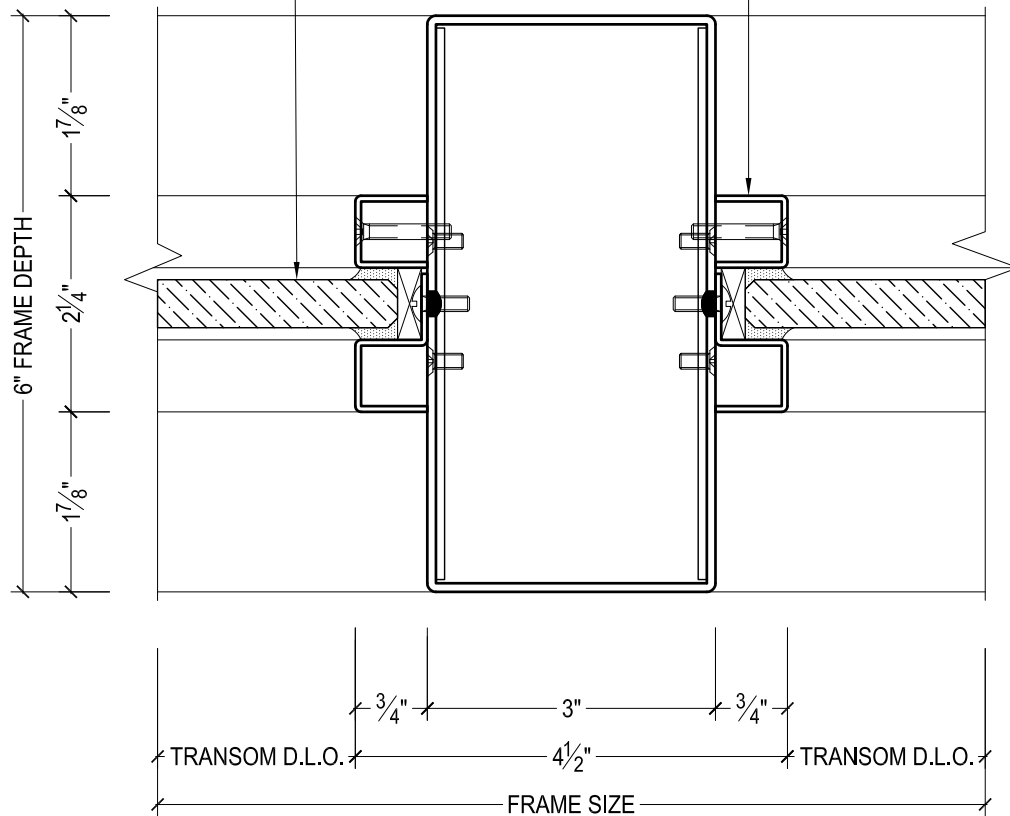


825 ALLEN ST • JAMESTOWN, NY 14701 • (716) 664-3811 • WWW.DAWSONDOORS.COM

DRAWN BY:	AG	DRAWING DATE:	10/15/19
SERIES #:	007-BAL	DRAWING #:	FXXTWAS50
DESCRIPTION:	GENERIC FRAME DETAIL - TRANSOM HEADER WITH APPLIED STOPS		

GLASS TYPE AND THICKNESS
TO MEET PROJECT SPECIFICATIONS

SCREW APPLIED
GLAZING STOP



DAWSON DOORS

825 ALLEN ST • JAMESTOWN, NY 14701 • (716) 664-3811 • WWW.DAWSONDOORS.COM

DRAWN BY:

AG

DRAWING DATE:

10/15/19

SERIES #:

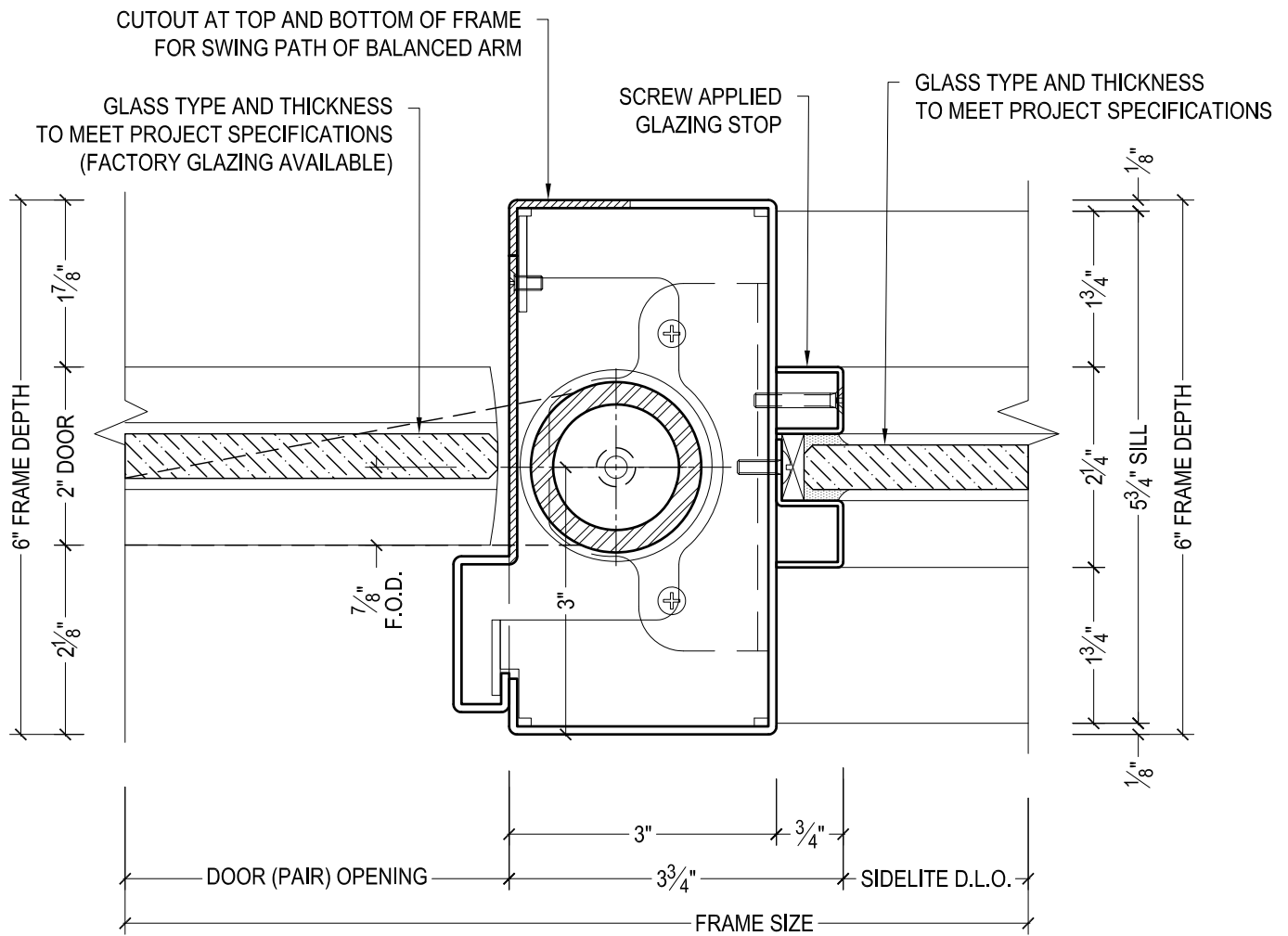
007-BAL

DRAWING #:

FXXTVAS50

DESCRIPTION:

GENERIC FRAME DETAIL - TRANSOM HEADER WITH
APPLIED STOPS



825 ALLEN ST • JAMESTOWN, NY 14701 • (716) 664-3811 • WWW.DAWSONDOORS.COM

DRAWN BY:	AG	DRAWING DATE:	10/15/19
SERIES #:	007-BAL	DRAWING #:	7BFSMAS50
DESCRIPTION:	PIVOT STILE / JAMB / SIDELITE MULLION - HERCULITE SERIES BALANCED DOORS. JAMB TREATED AS SIDELITE MULLION.		