

## 1. MATERIALS & FINISHES

- A. STAINLESS STEEL, BRASS, AND BRONZE ARE AVAILABLE IN #8 MIRROR, #6 SATIN, #4 SATIN, OR NON-DIRECTIONAL (ANGEL HAIR) FINISH. DAWSON DOES NOT PROVIDE LACQUERED FINISH ON BRASS OR BRONZE PRODUCTS. WET PAINTED OR POWDER COATED DOORS WILL BE FABRICATED FROM GALVANNEALED STEEL. CONSULT FACTORY FOR CUSTOM FINISHES.
- B. STAINLESS STEEL AND PAINTED GALVANNEALED STEEL RETAIL SERIES DOORS TO BE FABRICATED WITH 16 GA DOOR PANS AND 16 GA INTERNAL COMPONENTS. GLASS STOPS TO BE FABRICATED FROM 16 GA MATERIAL.
- C. BRASS AND BRONZE RUGGED SERIES DOORS TO BE FABRICATED WITH .060 DOOR PANS AND .060" INTERNAL COMPONENTS. GLASS STOPS TO BE FABRICATED FROM .060" MATERIAL.
- D. STAINLESS STEEL AND PAINTED GALVANNEALED STEEL FRAMES AND DOOR STOPS TO BE FABRICATED FROM 13 GA MATERIAL. TRANSOM AND SIDELITE GLASS STOPS TO BE FABRICATED FROM 16 GA MATERIAL.
- E. BRASS AND BRONZE FRAMES AND DOOR STOPS TO BE FABRICATED FROM .090" MATERIAL. TRANSOM AND SIDELITE GLASS STOPS TO BE FABRICATED FROM .060" MATERIAL.

## 2. STANDARD DIMENSIONS

- A. DOORS HAVE A MINIMUM TOP RAIL OF 4". STILE AND RAIL DOORS HAVE A MINIMUM STILE WIDTH OF  $2\frac{3}{4}"$ . ALL DOORS HAVE A STANDARD BOTTOM RAIL DIMENSION OF 10" TO MEET ADA CODE. MINIMUM BOTTOM RAIL OF 6" WILL NOT MEET ADA. MINIMUM DIMENSIONS SUBJECT TO CHANGE BASED ON HARDWARE - CONSULT FACTORY.
- B. FRAME PROFILES HAVE A MINIMUM SIZE OF 1" FACE x  $4\frac{1}{2}"$  DEPTH. MINIMUM DIMENSIONS SUBJECT TO CHANGE BASED ON HARDWARE AND ASPECT RATIO OF FRAME. CONSULT FACTORY FOR CUSTOM SIZES.
- C. SEE GLAZING DETAILS FOR STANDARD GLASS POCKET AND STANDARD GLASS BITE. CONSULT FACTORY FOR CUSTOM GLASS POCKET OR CUSTOM GLASS BITE.
- E. DOOR STOPS FABRICATED  $\frac{5}{8}"$  HIGH STANDARD, VARYING WITH HARDWARE REQUIREMENTS. WIDTH VARIES AS REQUIRED. CONSULT FACTORY FOR CUSTOM SIZES AND PROFILES.
- F. MINIMUM BUTT HUNG PIVOTED DOOR WIDTH TO MEET ADA MINIMUM OF 32" CLEAR OPENING IS  $35\frac{1}{4}"$ . MINIMUM SIZE OF DOOR SUBJECT TO CHANGE BASED ON HARDWARE REQUIREMENTS.

## 3. HARDWARE

- A. DETERMINING NUMBER OF HINGES REQUIRED. ONE HINGE FOR EVERY 30" OF DOOR HEIGHT.

<b>DOOR HEIGHT</b>	<b>NUMBER OF HINGES</b>
60" AND NOT OVER 90"	4 HINGES
OVER 90" AND UP TO 120"	5 HINGES
N/A OVER 120'	

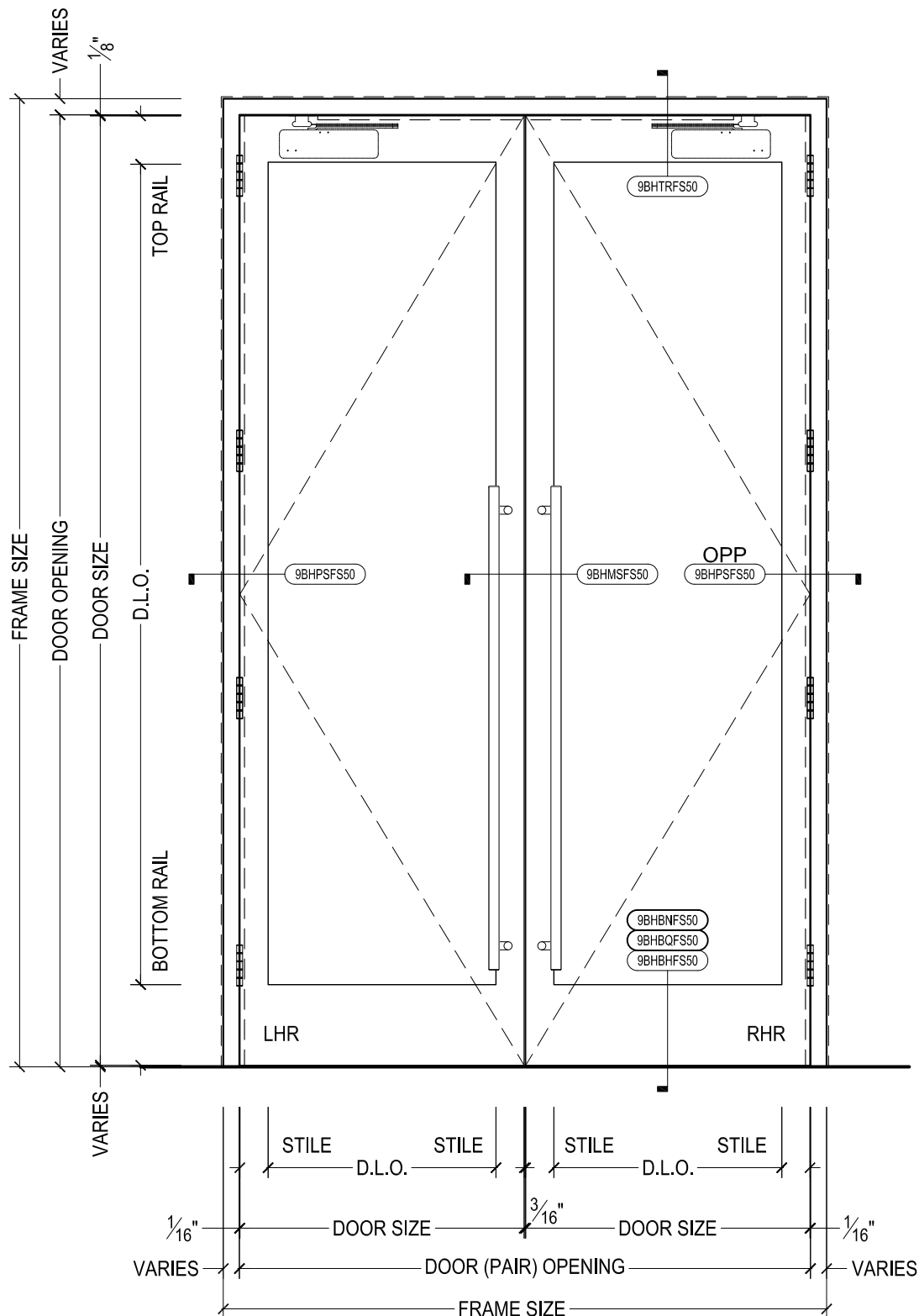
- B. DISTANCE FROM EDGE OF LEAF TO SWAGE LINE TO BE DETERMINED BY MANUFACTURER TEMPLATES.

- C. FULL MORTISED HINGES ARE RECOMMENDED WITH A "METAL" FRAME AND DOOR APPLICATION.



825 ALLEN ST • JAMESTOWN, NY 14701 • (716) 664-3811 • WWW.DAWSONDOORS.COM

DRAWN BY:	JBL	DRAWING DATE:	11/21/19
SERIES #:	009-BH	DRAWING #:	NOTES 1
DESCRIPTION:	GENERAL NOTES FOR 009 RETAIL SERIES DOORS WITH BUTT HINGE OR CONTINUOUS HINGE HARDWARE		



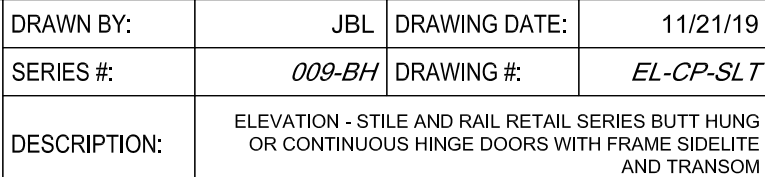
**DAWSON DOORS**

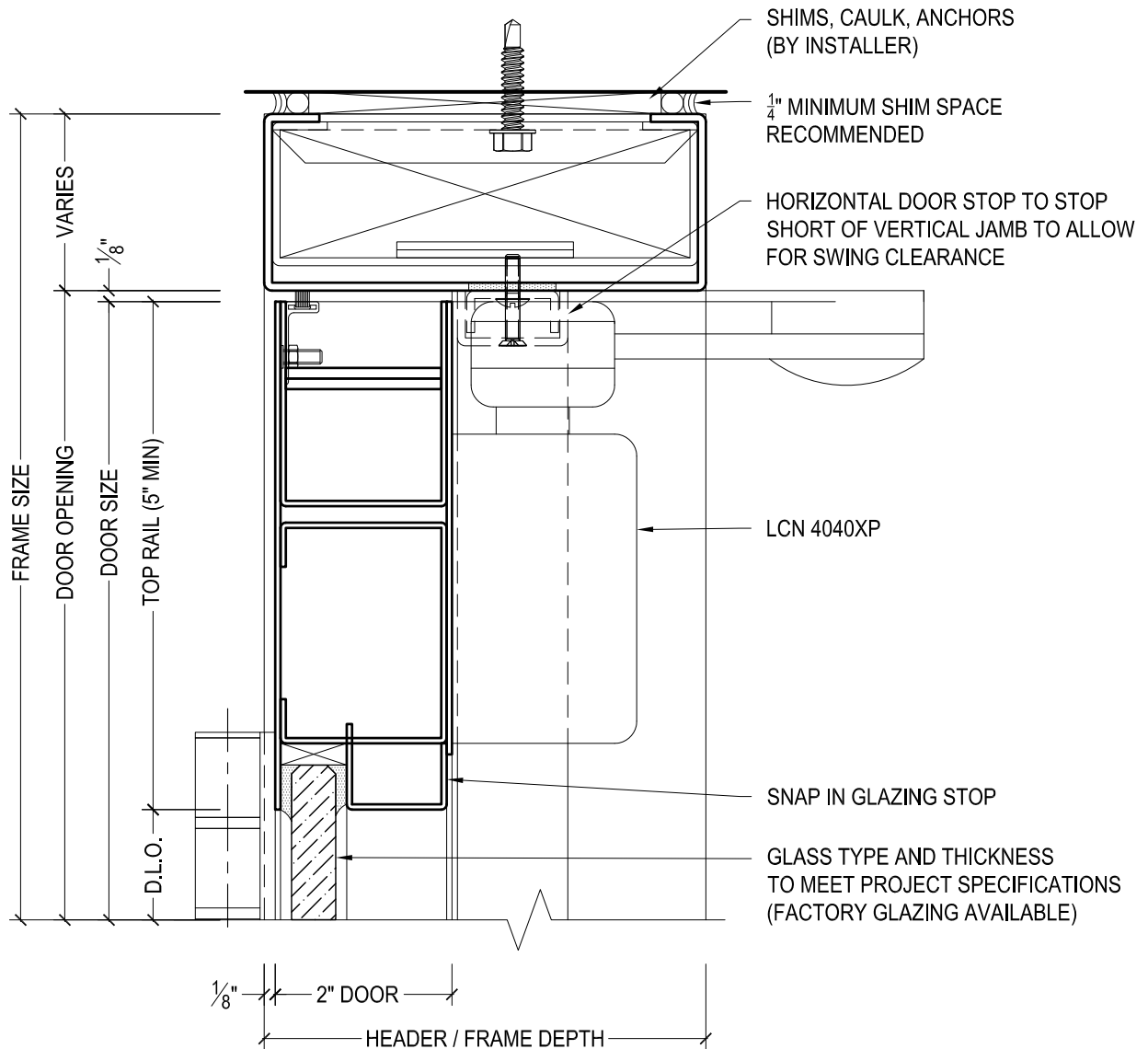
825 ALLEN ST • JAMESTOWN, NY 14701 • (716) 664-3811 • WWW.DAWSONDOORS.COM

DRAWN BY:	JBL	DRAWING DATE:	11/21/19
SERIES #:	009-BH	DRAWING #:	EL-FC-PAIR
DESCRIPTION:	ELEVATION - STILE AND RAIL RETAIL SERIES BUTT HUNG OR CONTINUOUS HINGE DOORS WITH FLOOR CLOSERS		

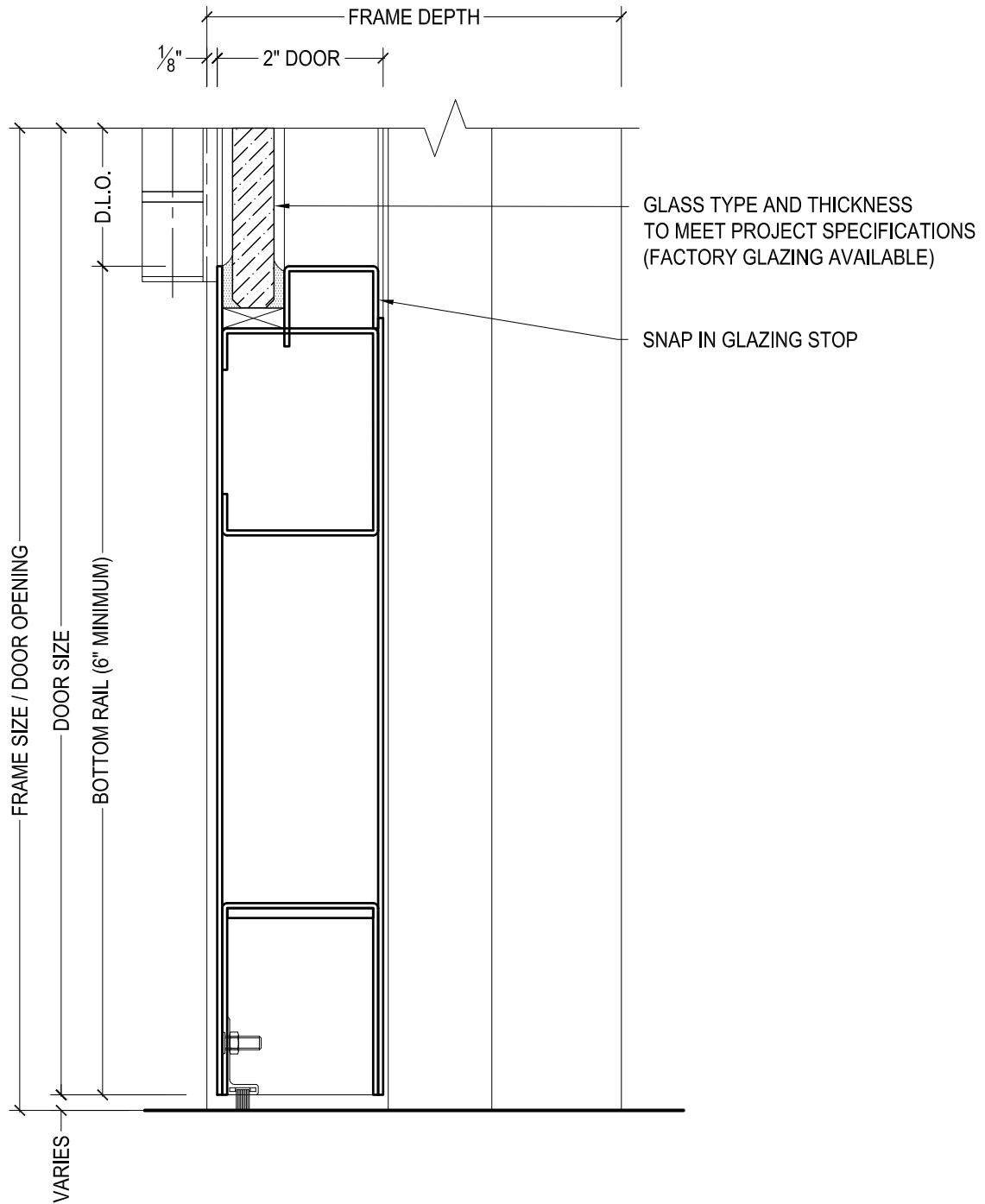


ELEVATION - STILE AND RAIL RETAIL SERIES BUTT HUNG  
OR CONTINUOUS HINGE DOORS WITH SURFACE MOUNTED  
AUTOMATIC OPERATOR

[illegible]

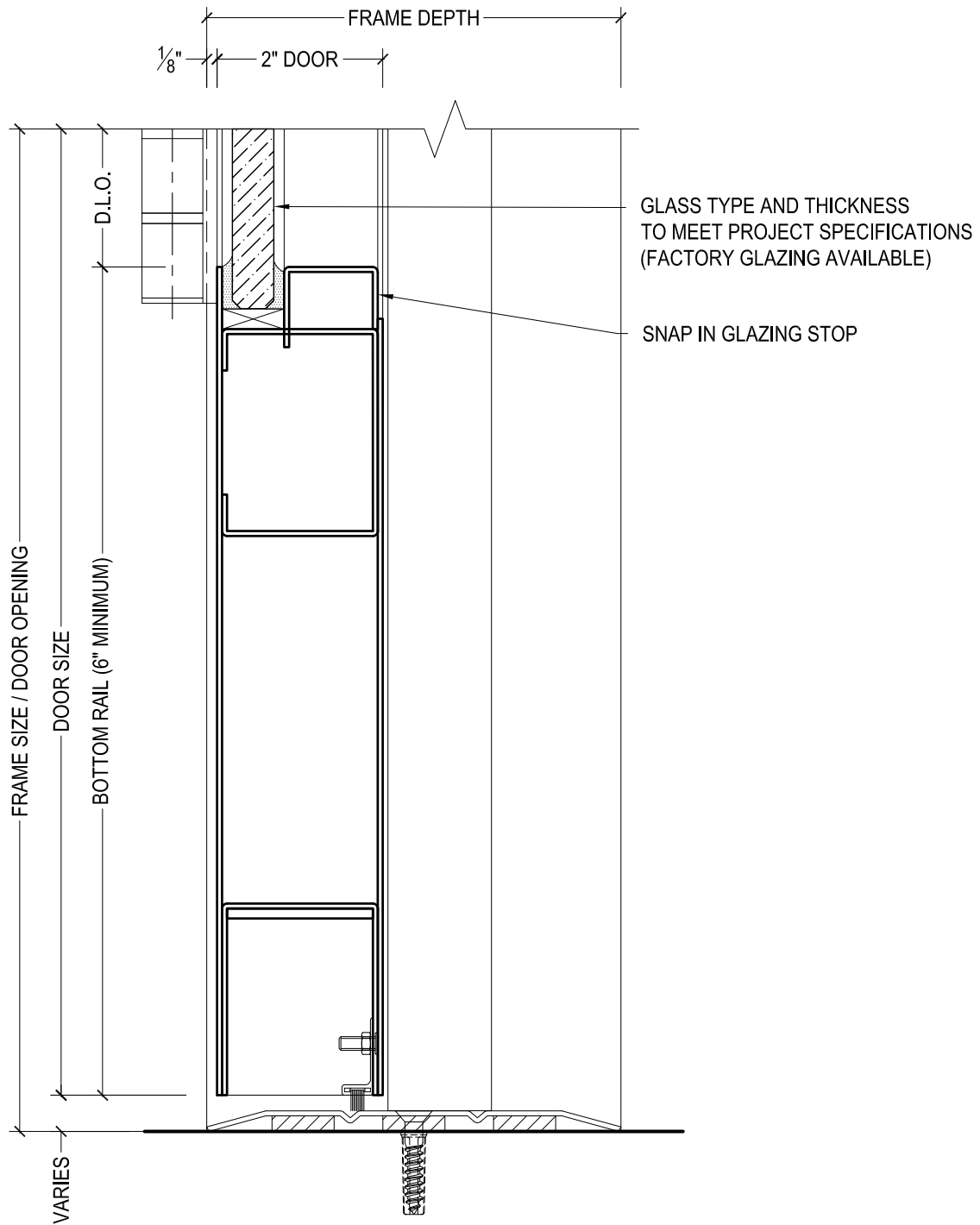


DRAWN BY:	JBL	DRAWING DATE:	11/21/19
SERIES #:	009-BH	DRAWING #:	9BHTRFS50
DESCRIPTION:	HEADER / TOP RAIL - RETAIL SERIES BUTT HUNG OR CONTINUOUS HINGE DOORS		



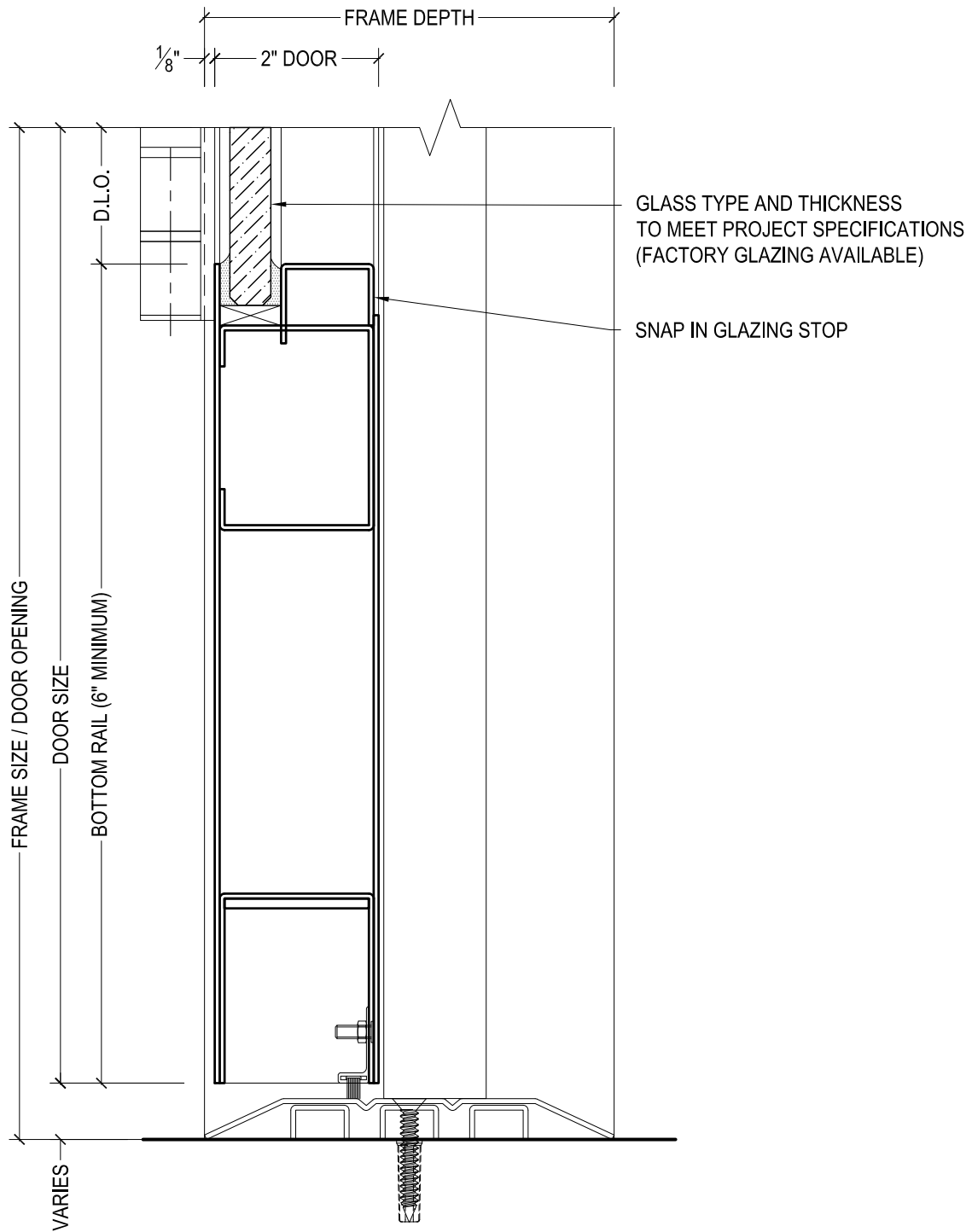
825 ALLEN ST • JAMESTOWN, NY 14701 • (716) 664-3811 • WWW.DAWSONDOORS.COM

DRAWN BY:	JBL	DRAWING DATE:	11/21/19
SERIES #:	009-BH	DRAWING #:	9BHBNFS50
DESCRIPTION:	BOTTOM RAIL / FLOOR CLOSER - RETAIL SERIES BUTT HUNG OR CONTINUOUS HINGE DOORS - NO THRESHOLD -		



825 ALLEN ST • JAMESTOWN, NY 14701 • (716) 664-3811 • WWW.DAWSONDOORS.COM

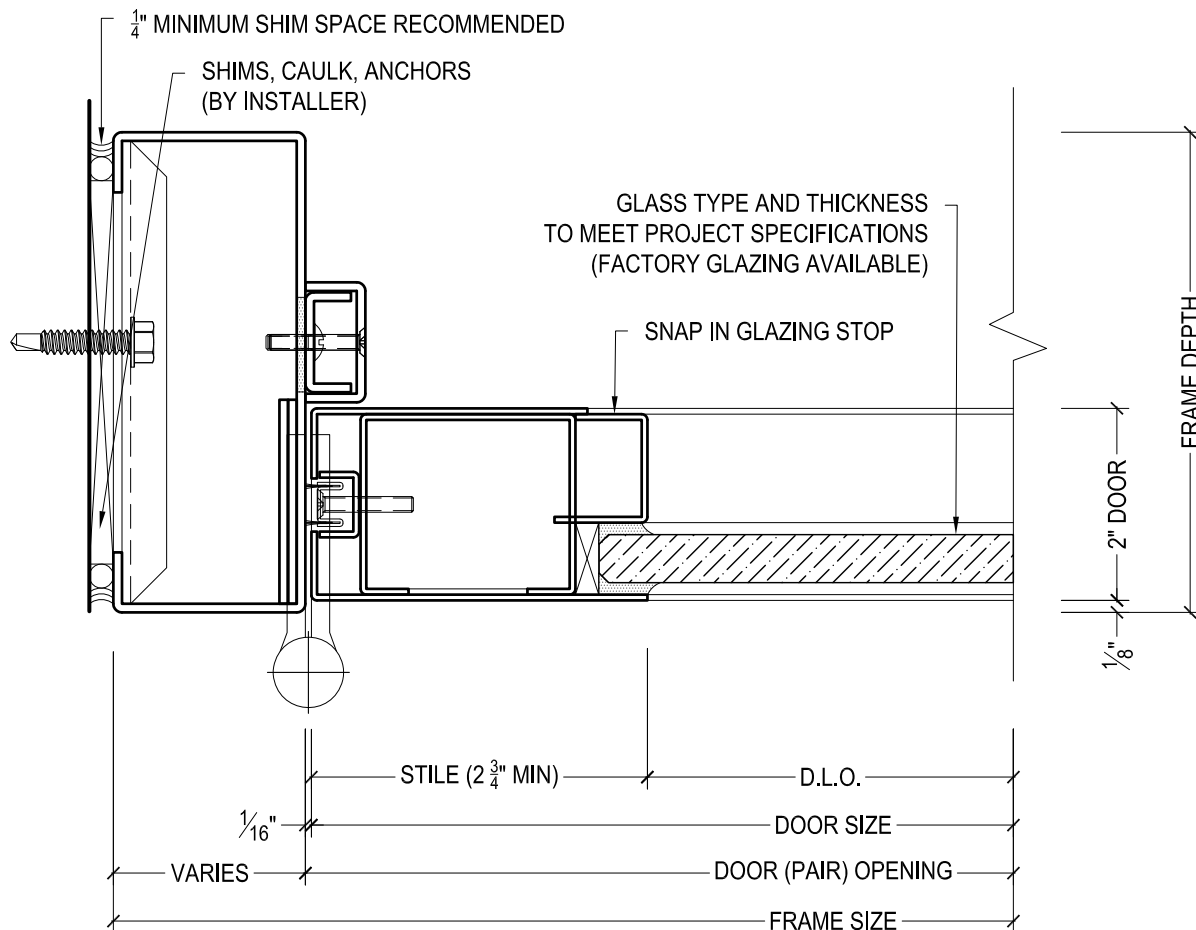
DRAWN BY:	JBL	DRAWING DATE:	11/21/19
SERIES #:	009-BH	DRAWING #:	9BHBQFS50
DESCRIPTION:	BOTTOM RAIL / FLOOR CLOSER - RETAIL SERIES BUTT HUNG OR CONTINUOUS HINGE DOORS - 1/4" THRESHOLD -		



825 ALLEN ST • JAMESTOWN, NY 14701 • (716) 664-3811 • WWW.DAWSONDOORS.COM

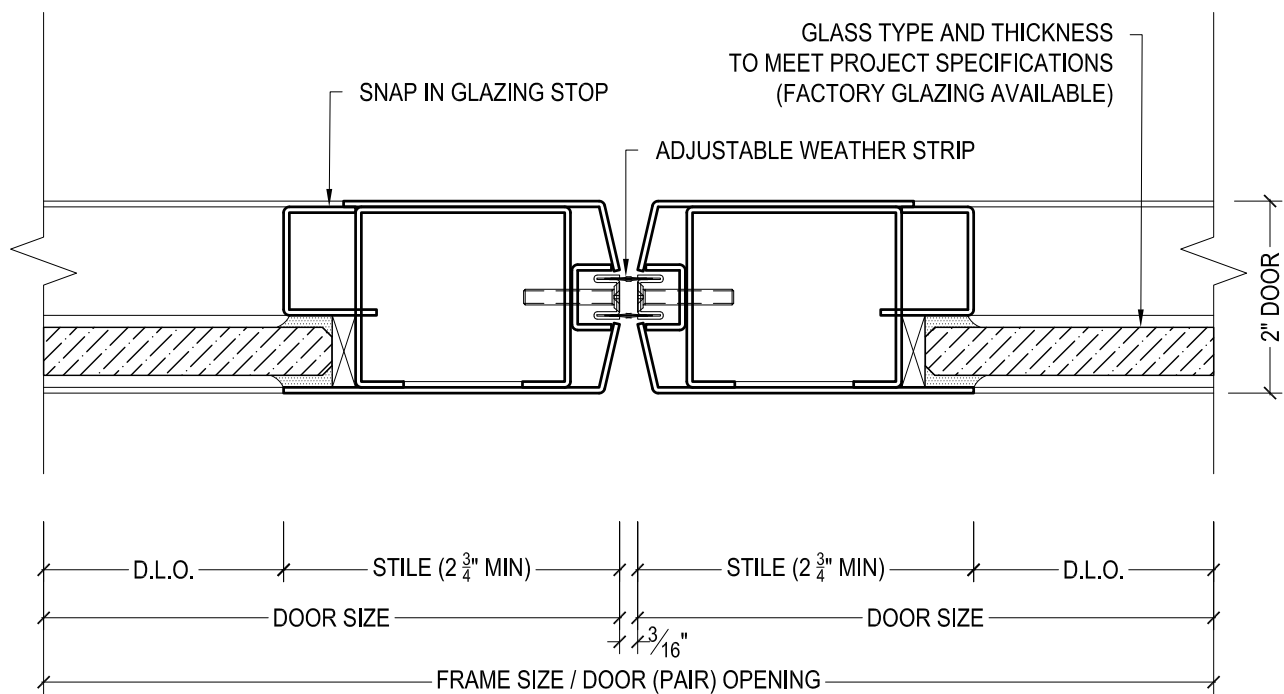
DRAWN BY:	JBL	DRAWING DATE:	11/21/19
SERIES #:	009-BH	DRAWING #:	9BHBHFS50
DESCRIPTION:	BOTTOM RAIL / FLOOR CLOSER - RETAIL SERIES BUTT HUNG OR CONTINUOUS HINGE DOORS - 1/2" THRESHOLD -		





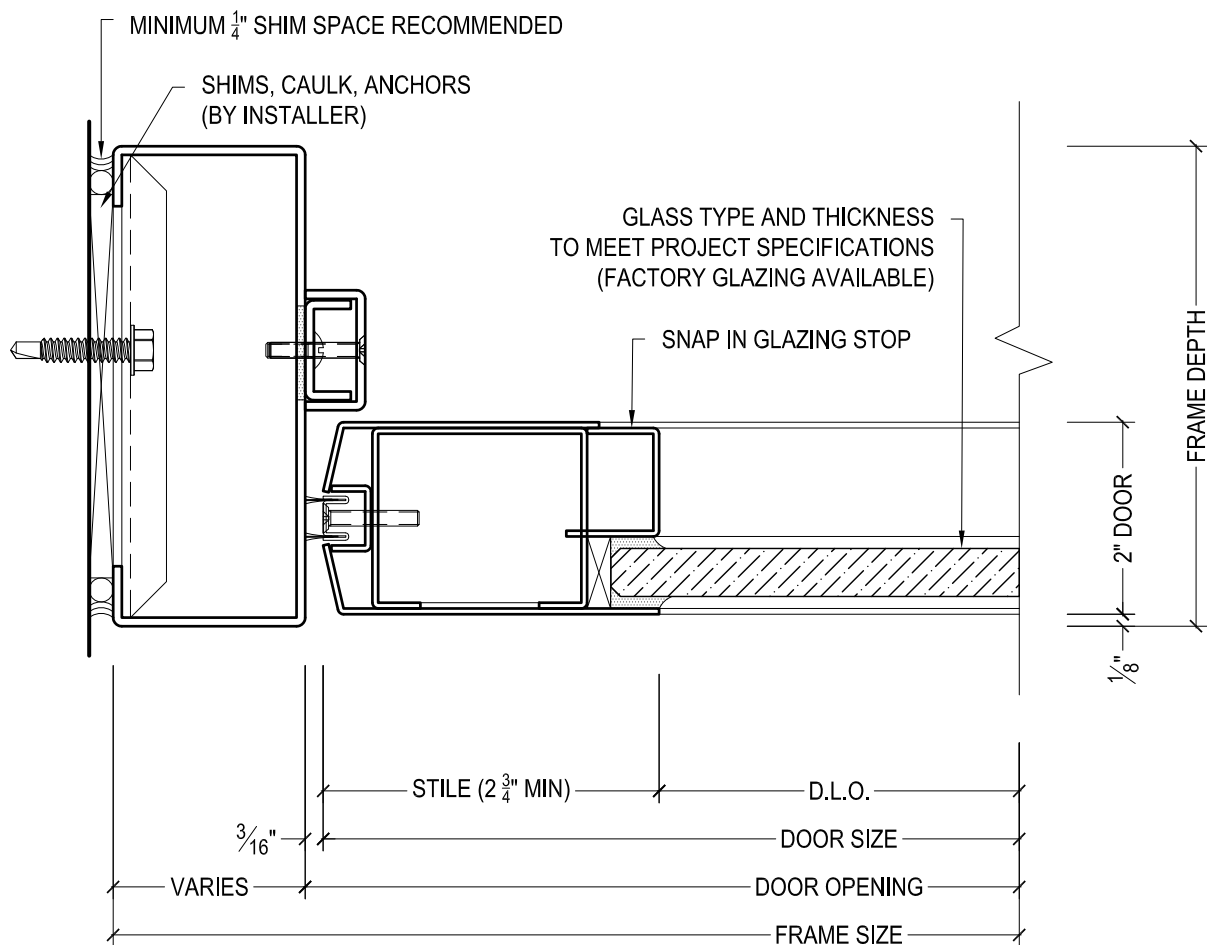
825 ALLEN ST • JAMESTOWN, NY 14701 • (716) 664-3811 • WWW.DAWSONDOORS.COM

DRAWN BY:	JBL	DRAWING DATE:	11/21/19
SERIES #:	009-BH	DRAWING #:	9BHPSFS50
DESCRIPTION:	JAMB / PIVOT STILE - RETAIL SERIES BUTT HUNG OR CONTINUOUS HINGE DOORS		



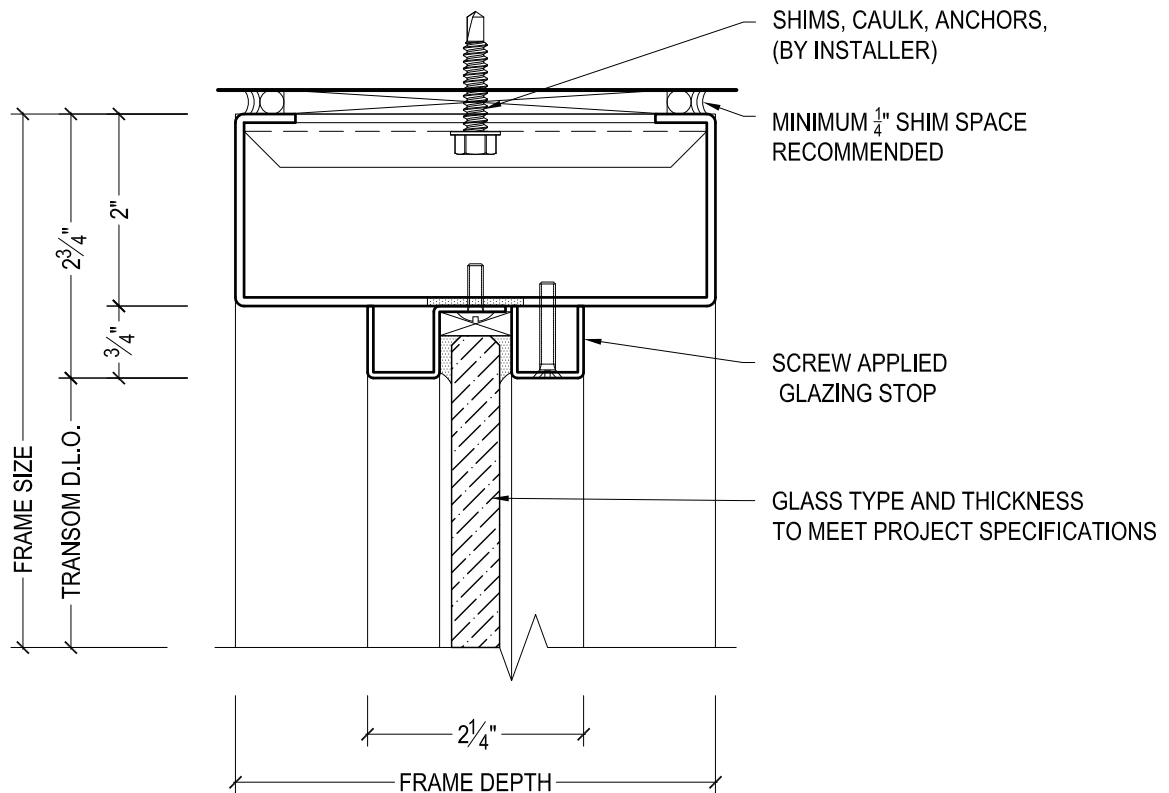
825 ALLEN ST • JAMESTOWN, NY 14701 • (716) 664-3811 • WWW.DAWSONDOORS.COM

DRAWN BY:	JBL	DRAWING DATE:	11/21/19
SERIES #:	009-BH	DRAWING #:	9BHMSFS50
DESCRIPTION:	MEETING STILES - RETAIL SERIES BUTT HUNG OR CONTINUOUS HINGE DOORS		



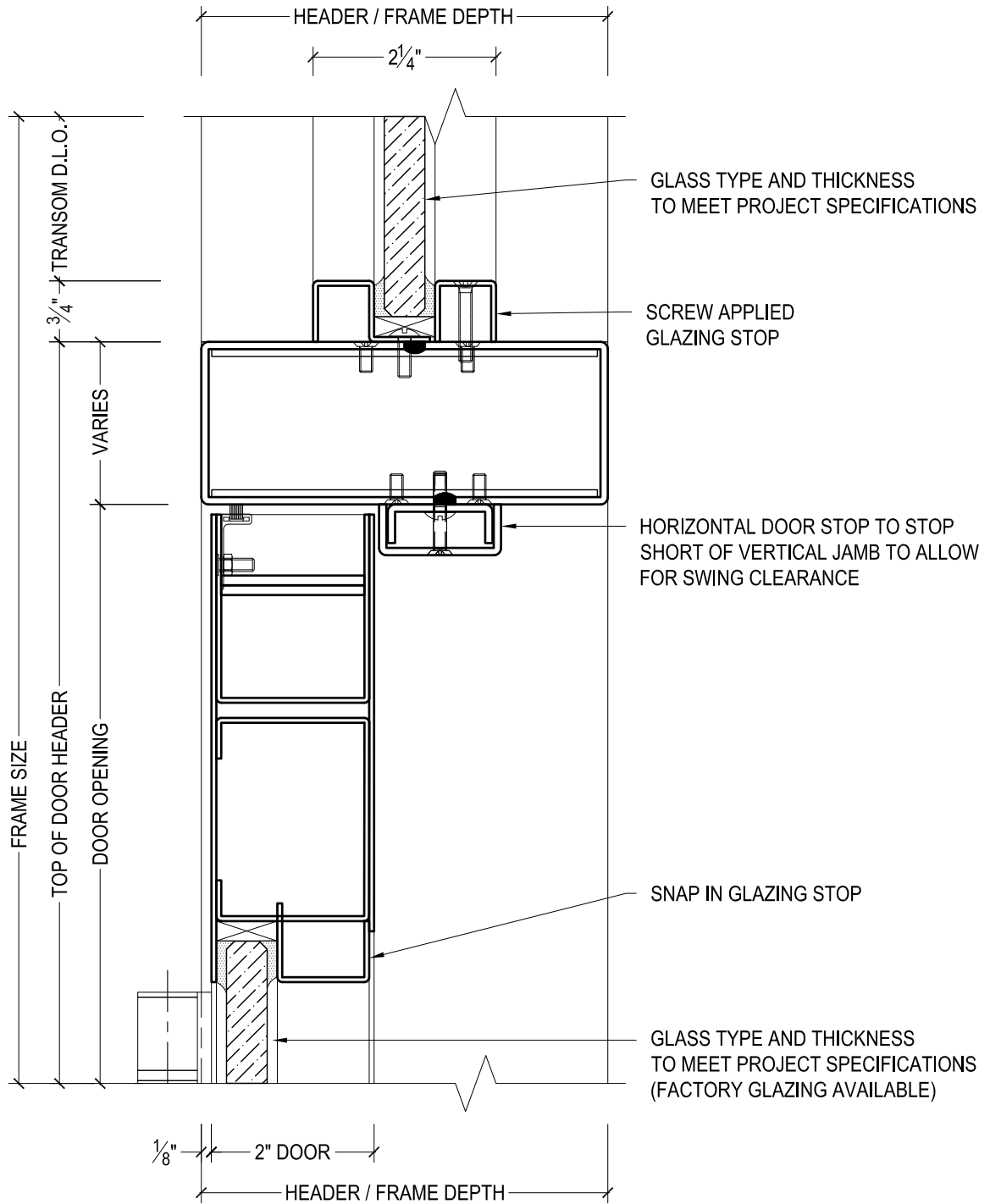
825 ALLEN ST • JAMESTOWN, NY 14701 • (716) 664-3811 • WWW.DAWSONDOORS.COM

DRAWN BY:	JBL	DRAWING DATE:	11/21/19
SERIES #:	009-BH	DRAWING #:	9BHLSFS50
DESCRIPTION:	LOCK JAMB / STILE - RETAIL SERIES BUTT HUNG OR CONTINUOUS HINGE DOORS		



825 ALLEN ST • JAMESTOWN, NY 14701 • (716) 664-3811 • WWW.DAWSONDOORS.COM

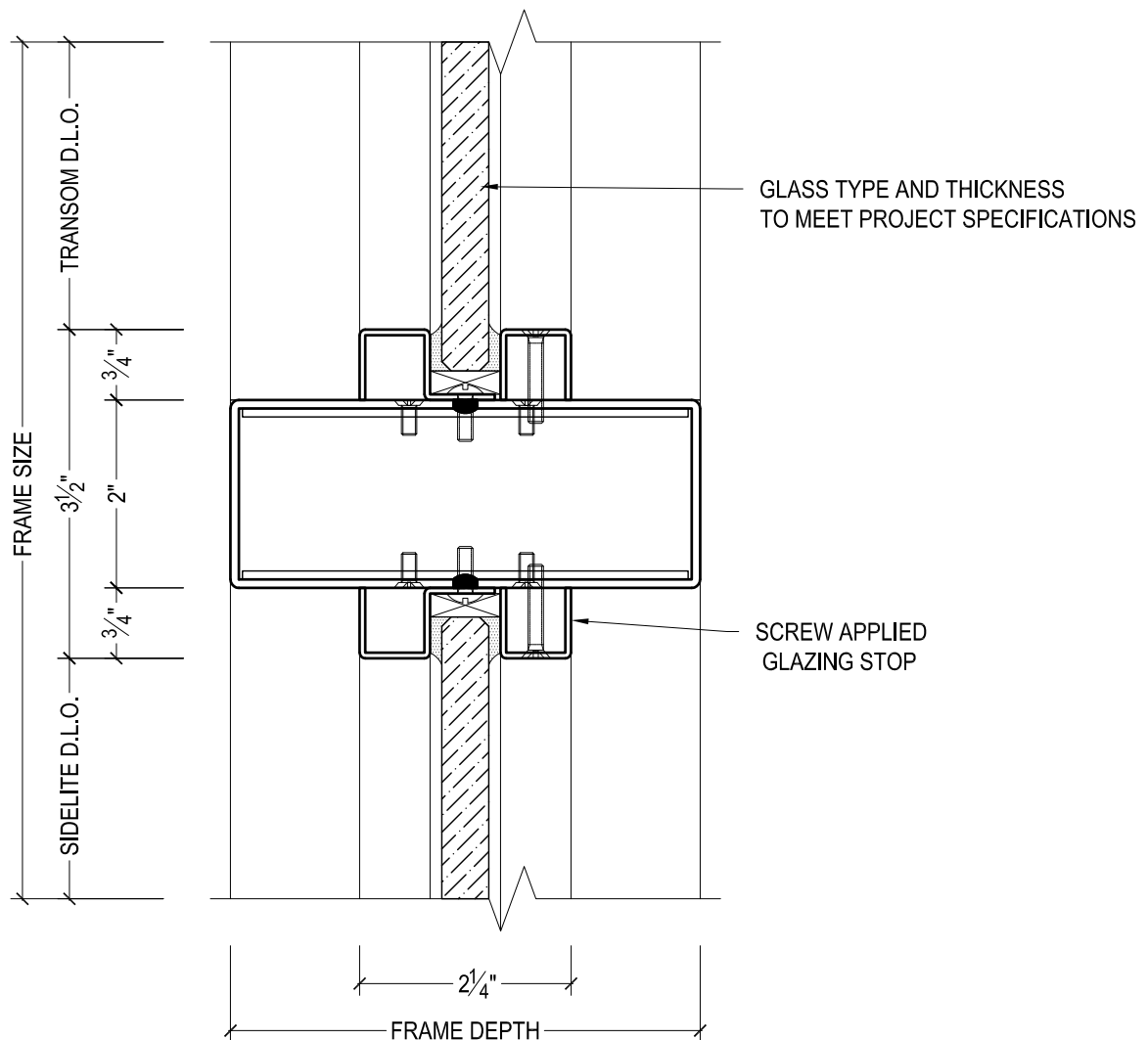
DRAWN BY:	JBL	DRAWING DATE:	11/21/19
SERIES #:	009-BH	DRAWING #:	FXXSHAS50
DESCRIPTION:	TRANSOM HEADER WITH APPLIED STOPS		



# DAWSON DOORS

825 ALLEN ST • JAMESTOWN, NY 14701 • (716) 664-3811 • WWW.DAWSONDOORS.COM

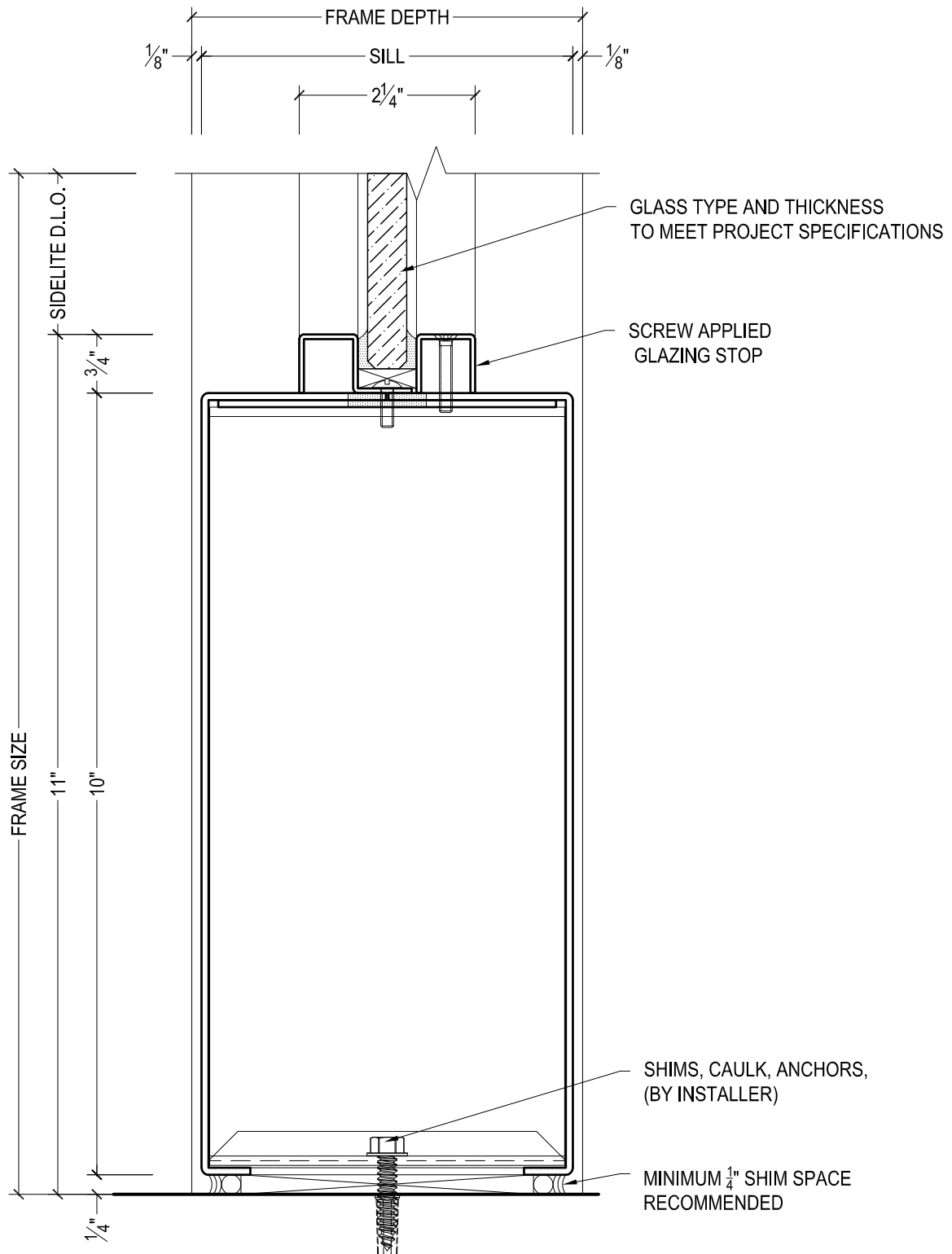
DRAWN BY:	JBL	DRAWING DATE:	11/21/19
SERIES #:	009-BH	DRAWING #:	9BHTHFS50
DESCRIPTION:	HEADER / TOP RAIL - RETAIL SERIES BUTT HUNG OR CONTINUOUS HINGE DOORS WITH TRANSOM ABOVE WITH APPLIED STOPS		



# DAWSON DOORS

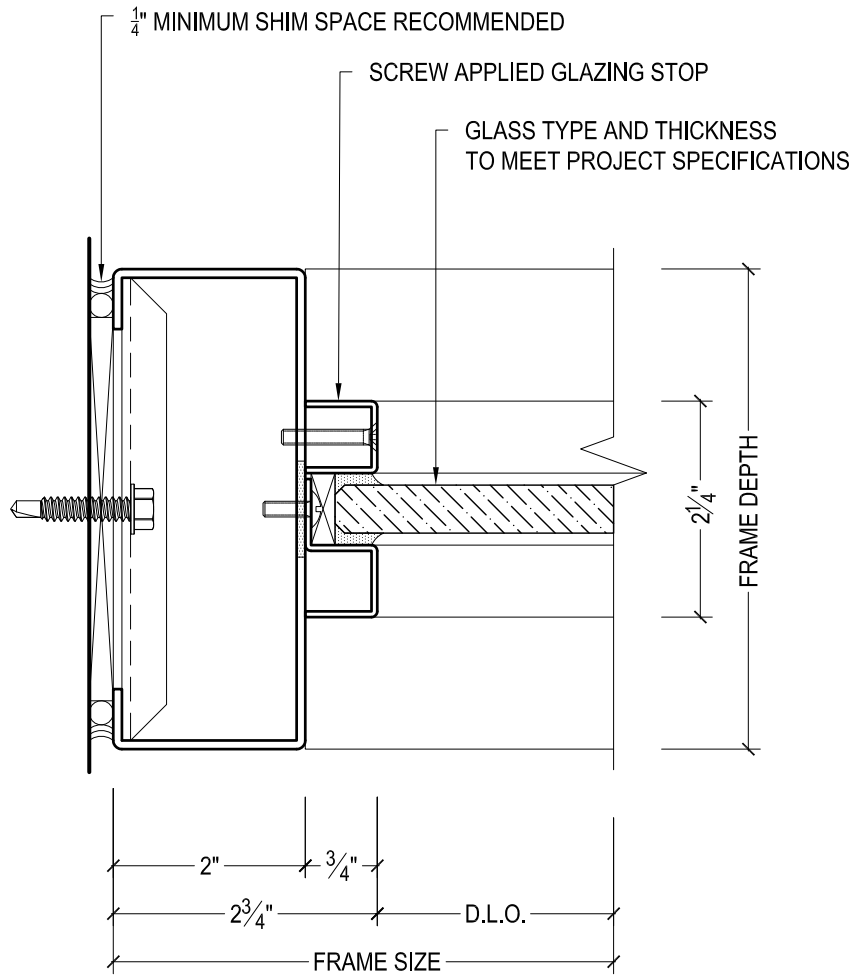
825 ALLEN ST • JAMESTOWN, NY 14701 • (716) 664-3811 • WWW.DAWSONDOORS.COM

DRAWN BY:	JBL	DRAWING DATE:	11/21/19
SERIES #:	009-BH	DRAWING #:	FXXSCAS50
DESCRIPTION:	SIDELITE BELOW & TRANSOM ABOVE WITH APPLIED STOPS		



**DAWSON DOORS**

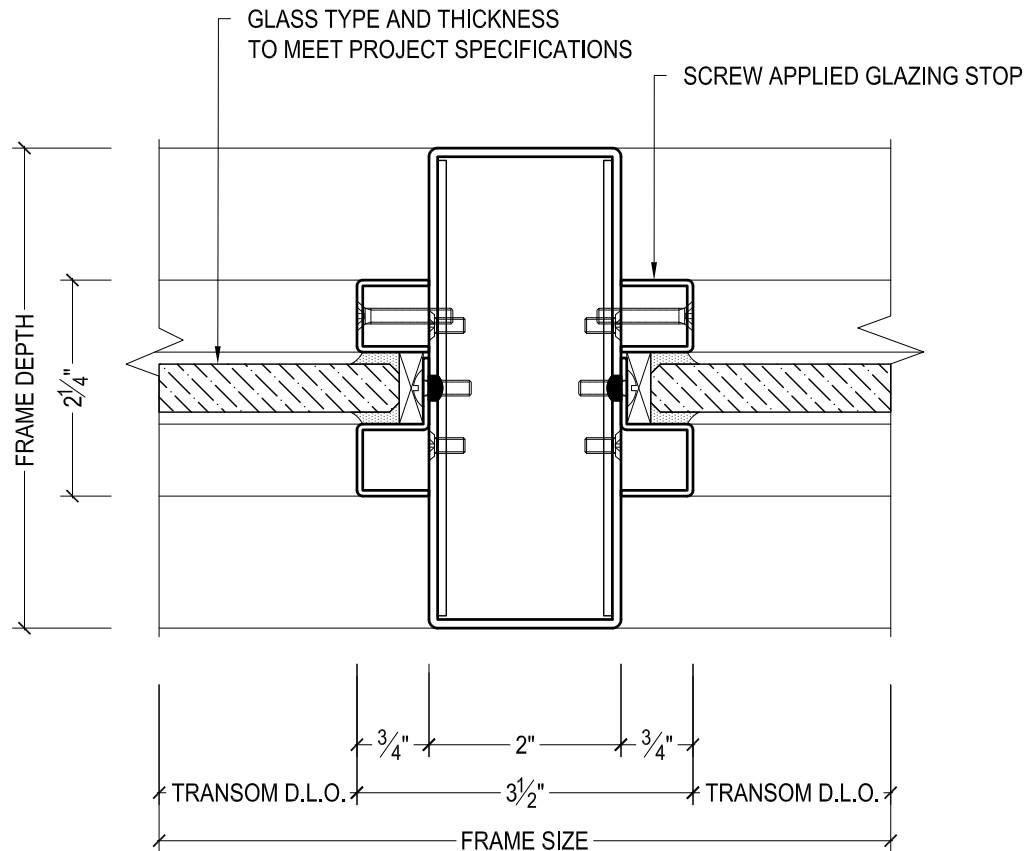
DRAWN BY:	JBL	DRAWING DATE:	11/21/19
SERIES #:	009-BH	DRAWING #:	FXXSSAS50
DESCRIPTION:	SIDELITE SILL WITH APPLIED STOPS		



825 ALLEN ST • JAMESTOWN, NY 14701 • (716) 664-3811 • WWW.DAWSONDOORS.COM

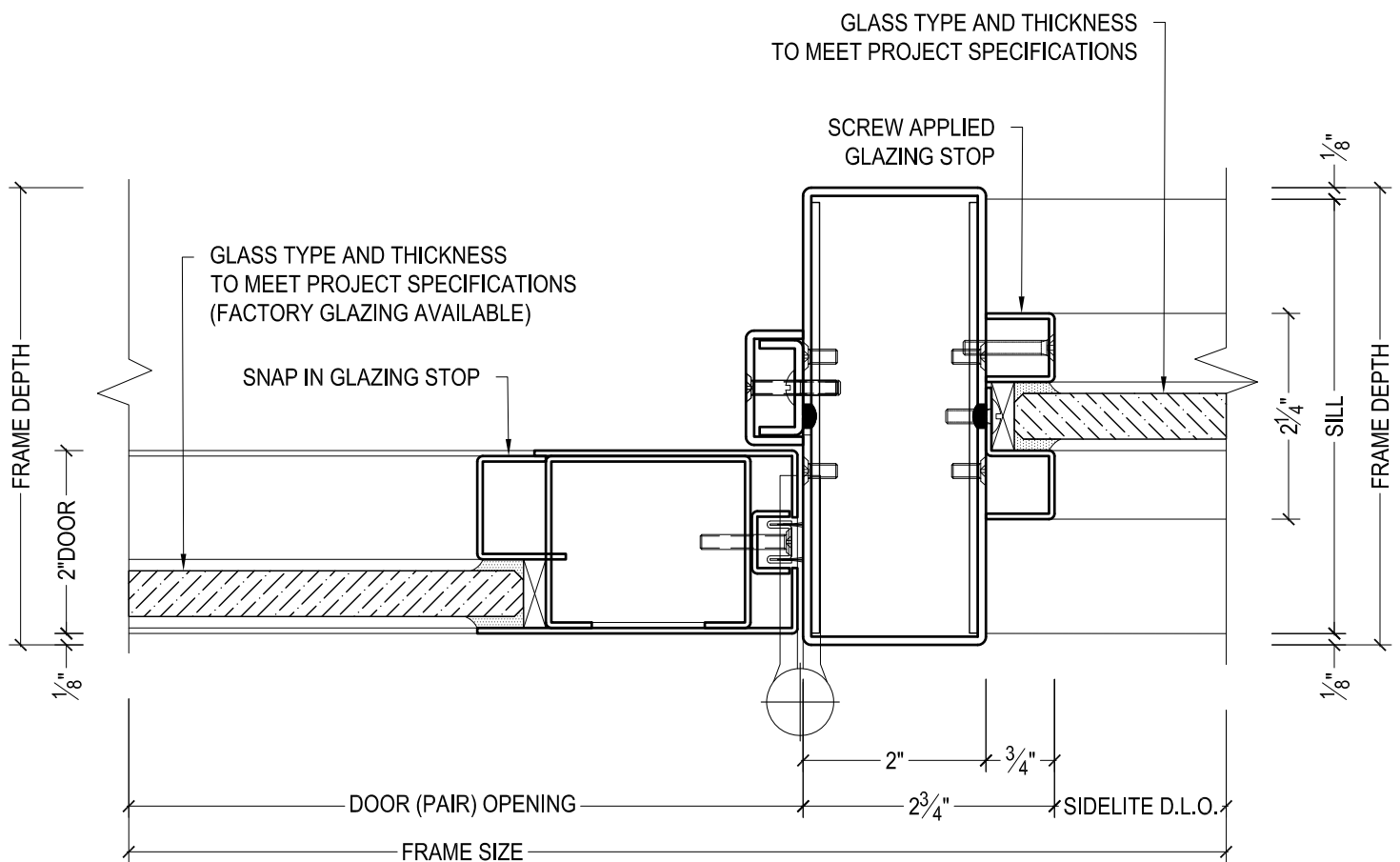
DRAWN BY:	JBL	DRAWING DATE:	11/21/19
SERIES #:	009-BH	DRAWING #:	FXXTWAS50
DESCRIPTION:	TRANSOM JAMB WITH APPLIED STOPS		





825 ALLEN ST • JAMESTOWN, NY 14701 • (716) 664-3811 • WWW.DAWSONDOORS.COM

DRAWN BY:	JBL	DRAWING DATE:	11/21/19
SERIES #:	009-BH	DRAWING #:	FXXTVAS50
DESCRIPTION:	TRANSOM MULLION WITH APPLIED STOPS		



825 ALLEN ST • JAMESTOWN, NY 14701 • (716) 664-3811 • WWW.DAWSONDOORS.COM

DRAWN BY:	JBL	DRAWING DATE:	11/21/19
SERIES #:	009-BH	DRAWING #:	9BHSMAS50
DESCRIPTION:	JAMB / PIVOT STILE / SIDELITE MULLION - RETAIL SERIES BUTT HUNG OR CONTINUOUS HINGE DOORS WITH FIXED FLAT GLAZING. JAMB TREATED AS SIDELITE MULLION		