

1. MATERIALS & FINISHES

- A. STAINLESS STEEL, BRASS, AND BRONZE ARE AVAILABLE IN #8 MIRROR, #6 SATIN, #4 SATIN, OR NON-DIRECTIONAL (ANGEL HAIR) FINISH. DAWSON DOES NOT PROVIDE LACQUERED FINISH ON BRASS OR BRONZE PRODUCTS. WET PAINTED OR POWDER COATED DOORS WILL BE FABRICATED FROM GALVANNEALED STEEL. CONSULT FACTORY FOR CUSTOM FINISHES.
- B. STAINLESS STEEL AND PAINTED GALVANNEALED STEEL RETAIL SERIES DOORS TO BE FABRICATED WITH 16 GA DOOR PANS AND 16 GA INTERNAL COMPONENTS. GLASS STOPS AND REMOVABLE HEELS TO BE FABRICATED FROM 16 GA MATERIAL.
- C. BRASS AND BRONZE RETAIL SERIES DOORS TO BE FABRICATED WITH .060" DOOR PANS AND .060" INTERNAL COMPONENTS. GLASS STOPS AND REMOVABLE HEELS TO BE FABRICATED FROM .060" MATERIAL.
- D. STAINLESS STEEL AND PAINTED GALVANNEALED STEEL FRAMES AND DOOR STOPS TO BE FABRICATED FROM 13 GA MATERIAL. TRANSOM AND SIDELITE GLASS STOPS TO BE FABRICATED FROM 16 GA MATERIAL.
- E. BRASS AND BRONZE FRAMES AND DOOR STOPS TO BE FABRICATED FROM .090" MATERIAL. TRANSOM AND SIDELITE GLASS STOPS TO BE FABRICATED FROM .060" MATERIAL.

2. STANDARD DIMENSIONS

- A. DOORS HAVE A MINIMUM TOP RAIL OF 4". STILE AND RAIL DOORS HAVE A MINIMUM STILE WIDTH OF $2\frac{3}{4}$ ". ALL DOORS HAVE A STANDARD BOTTOM RAIL DIMENSION OF 10" TO MEET ADA CODE. MINIMUM BOTTOM RAIL OF 6" WILL NOT MEET ADA. MINIMUM DIMENSIONS SUBJECT TO CHANGE BASED ON HARDWARE - CONSULT FACTORY.
- B. FRAME PROFILES HAVE A MINIMUM SIZE OF 1" FACE x $4\frac{3}{4}$ " DEPTH. MINIMUM DIMENSIONS SUBJECT TO CHANGE BASED ON HARDWARE AND ASPECT RATIO OF FRAME. CONSULT FACTORY FOR CUSTOM SIZES.
- C. SEE GLAZING DETAILS FOR STANDARD GLASS POCKET AND STANDARD GLASS BITE. CONSULT FACTORY FOR CUSTOM GLASS POCKET OR CUSTOM GLASS BITE.
- E. HORIZONTAL DOOR STOPS TO STOP SHORT ON PIVOT SIDE FOR SWING CLEARANCE. DOOR STOPS FABRICATED $\frac{5}{8}$ " HIGH STANDARD, VARYING WITH HARDWARE REQUIREMENTS. WIDTH VARIES AS REQUIRED. CONSULT FACTORY FOR CUSTOM SIZES AND PROFILES.
- F. MINIMUM CENTER PIVOT DOOR WIDTH TO MEET ADA MINIMUM OF 32" CLEAR OPENING IS $36\frac{1}{16}$ ". MINIMUM SIZE OF DOOR SUBJECT TO CHANGE BASED ON HARDWARE REQUIREMENTS.

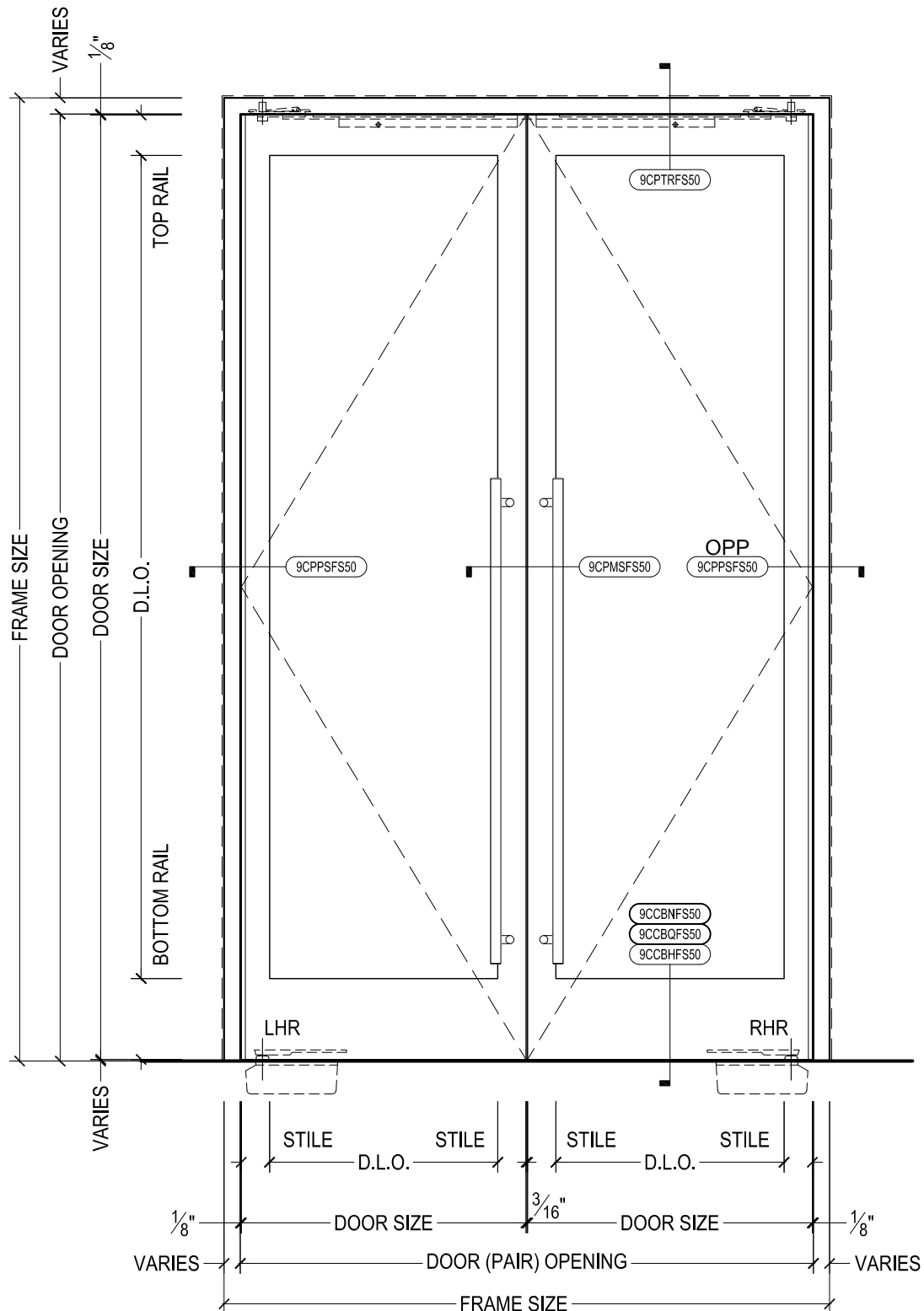
3. HARDWARE

- A. AUTOMATIC DOOR BOTTOMS ARE NOT COMPATIBLE WITH CENTER PIVOTED HARDWARE. DAWSON WILL NOT PROVIDE AUTOMATIC DOOR BOTTOMS ON DOORS THAT USE CENTER PIVOTS.
- B. AUTOMATIC OPERATORS WITH END LOAD REQUIREMENTS WILL REQUIRE THE RIXSON H117-3/4 BOTTOM PIVOT. THE BOTTOM PIVOTS TYPICALLY SUPPLIED WITH OVERHEAD AUTOMATIC OPERATORS ARE NOT HEAVY DUTY ENOUGH FOR DAWSON DOORS.
- C. STANDARD PIVOT CENTERLINE IS $2\frac{3}{4}$ " FROM THE DOOR OPENING, CENTERED IN THE DOOR. CONSULT FACTORY FOR CUSTOM PIVOT CENTERLINE.
- D. MOST CLOSER MANUFACTURERS RECOMMEND AN AUXILIARY STOP TO PREVENT DAMAGE TO THE CLOSER. PLEASE SPECIFY A MANUFACTURER AND MODEL OF A SURFACE MOUNTED, CONCEALED (WHERE APPLICABLE), OR FLOOR / WALL STOP.



825 ALLEN ST • JAMESTOWN, NY 14701 • (716) 664-3811 • WWW.DAWSONDOORS.COM

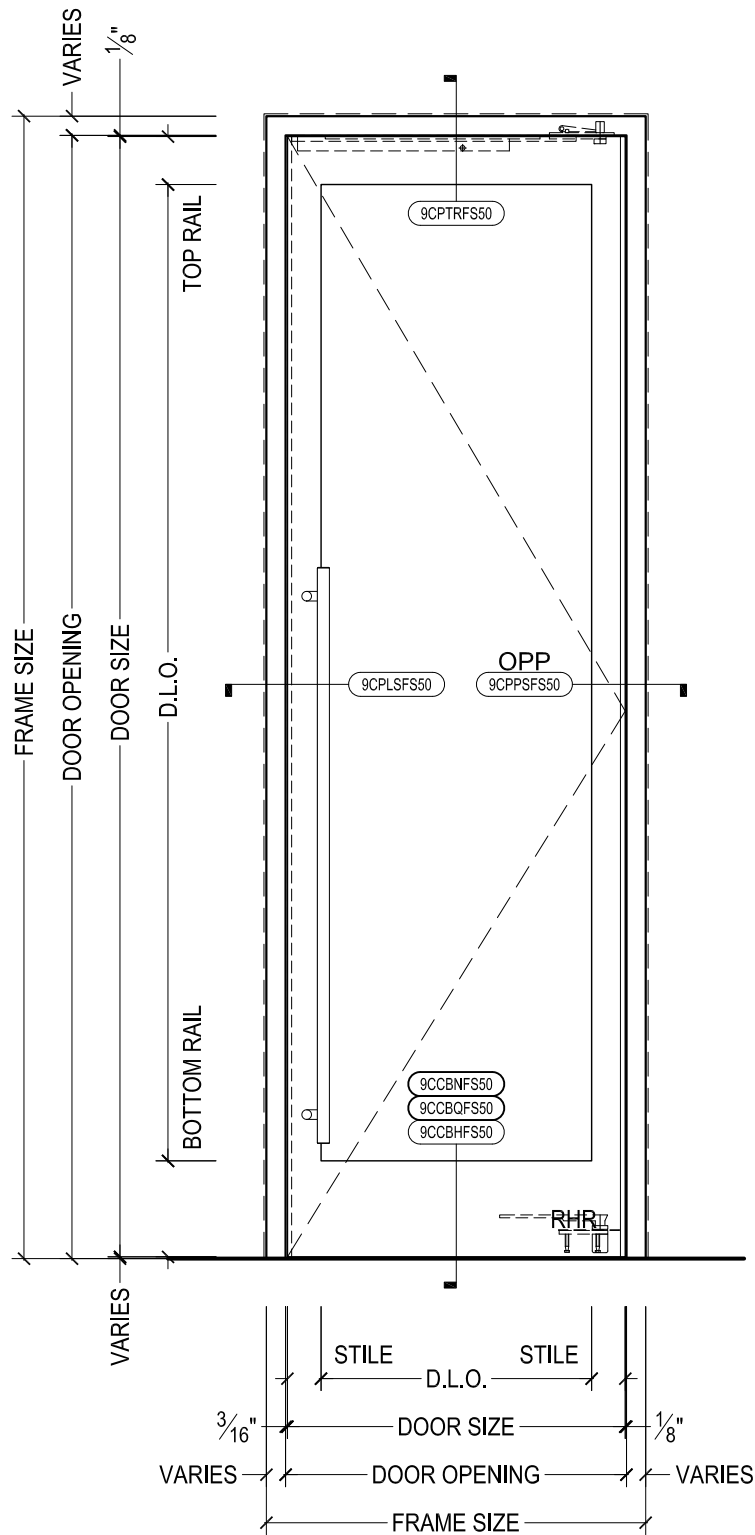
DRAWN BY:	JBL	DRAWING DATE:	11/21/19
SERIES #:	009-CP	DRAWING #:	NOTES 1
DESCRIPTION:	GENERAL NOTES FOR 009 RETAIL SERIES DOORS WITH CENTER PIVOTED HARDWARE		



DAWSON DOORS

825 ALLEN ST • JAMESTOWN, NY 14701 • (716) 664-3811 • WWW.DAWSONDOORS.COM

DRAWN BY:	JBL	DRAWING DATE:	11/21/19
SERIES #:	009-CP	DRAWING #:	EL-FC-PAIR
DESCRIPTION:	ELEVATION - STILE AND RAIL RETAIL SERIES CENTER PIVOTED DOORS WITH FLOOR CLOSERS		



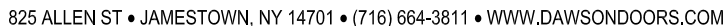
DAWSON DOORS

825 ALLEN ST • JAMESTOWN, NY 14701 • (716) 664-3811 • WWW.DAWSONDOORS.COM

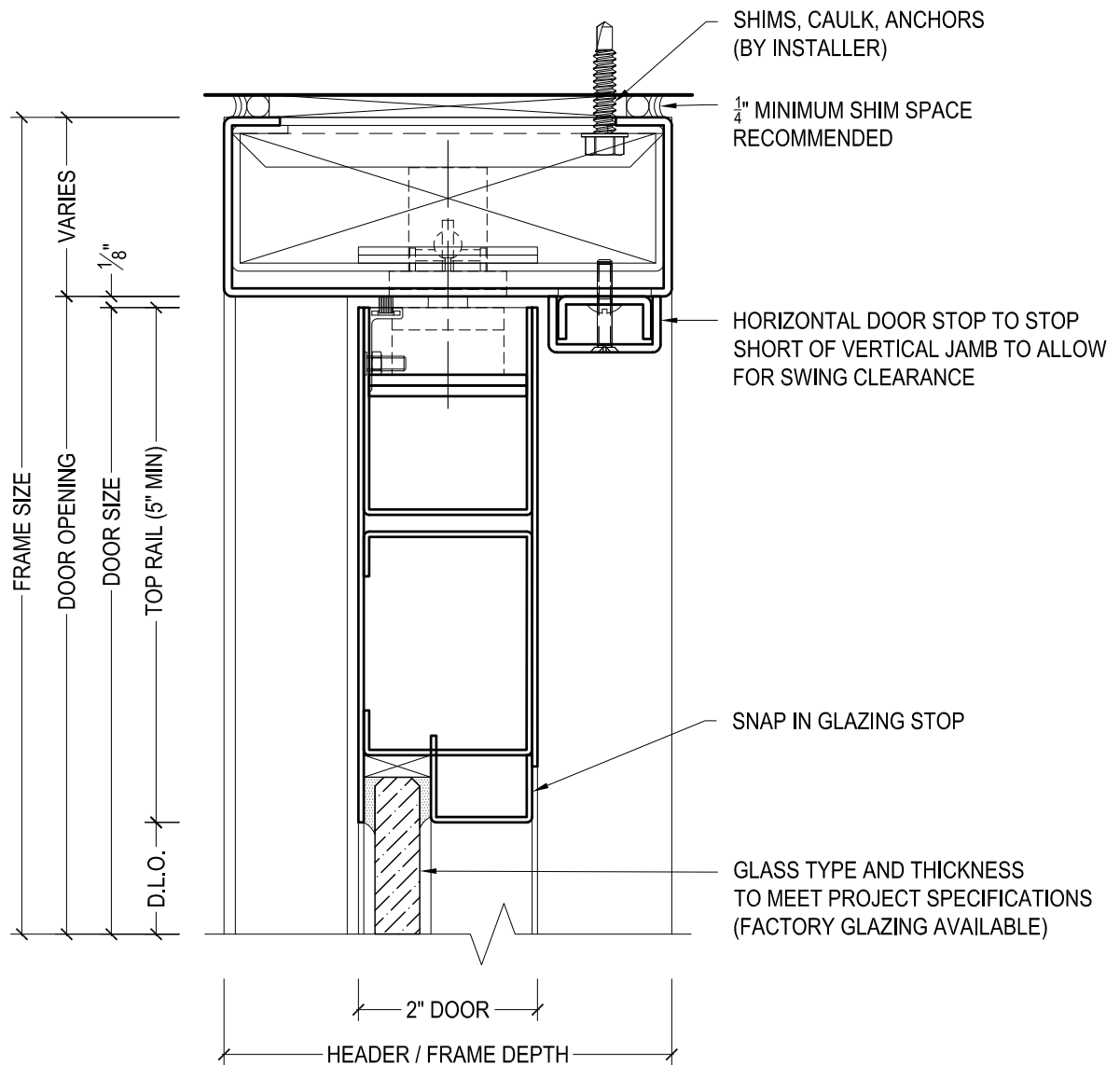
DRAWN BY:	JBL	DRAWING DATE:	11/21/19
SERIES #:	009-CP	DRAWING #:	EL-SAO-SIN
DESCRIPTION:	ELEVATION - STILE AND RAIL RETAIL SERIES CENTER PIVOTED DOORS WITH SURFACE MOUNTED AUTOMATIC OPERATOR		

Technical drawing of a door and window assembly. The drawing includes the following dimensions and labels:

- Dimensions:**
 - Top: $2\frac{3}{4}"$ (left), TRANSOM D.L.O. (center), $3\frac{1}{2}"$ (center), TRANSOM D.L.O. (center), $2\frac{3}{4}"$ (right)
 - Right: TRANSOM D.L.O. (top), $3\frac{1}{2}"$ (middle), SIDELITE D.L.O. (bottom), FRAME SIZE (bottom)
 - Bottom: 2" (left), DOOR (PAIR) OPENING (center), $2\frac{3}{4}"$ (right), SIDELITE D.L.O. (right), $2\frac{3}{4}"$ (right)
 - Bottom Right: 11" (vertical), $\frac{1}{4}"$ (horizontal)
- Labels:**
 - FXXTWAS50 (top left)
 - FXXSHAS50 (top center)
 - FXXTVAS50 (top right)
 - OPP (top right)
 - 9CPTHFS50 (middle left)
 - 9CPSMAS50 (middle right)
 - FXXSCAS50 (middle right)
 - FXXTWAS50 (bottom right)
 - FXXSSAS50 (bottom right)
 - LHR (bottom left)
 - RHR (bottom right)

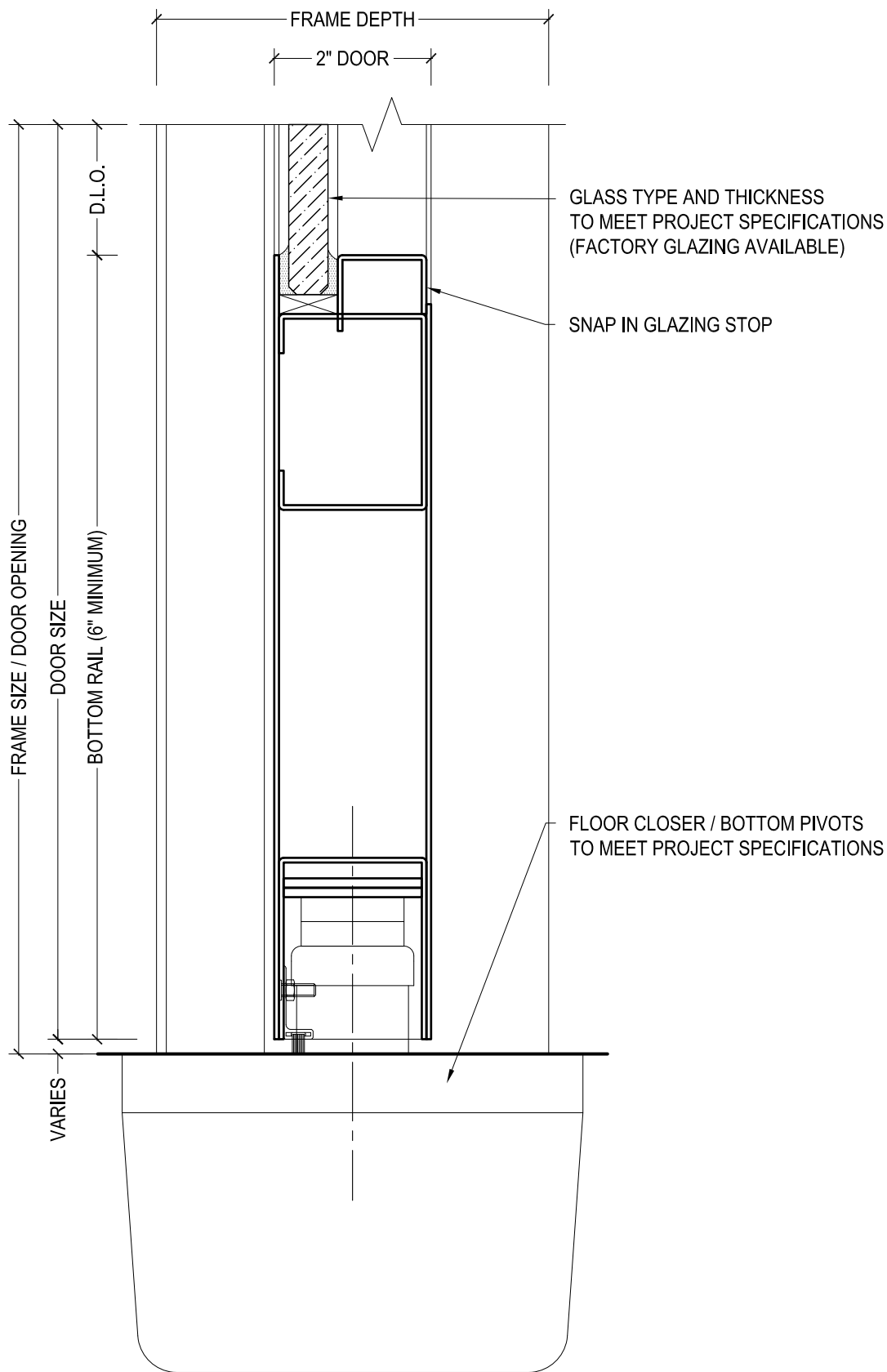


ELEVATION - STILE AND RAIL RETAIL SERIES CENTER
PIVOTED DOORS WITH FRAME SIDELITE AND TRANSOM



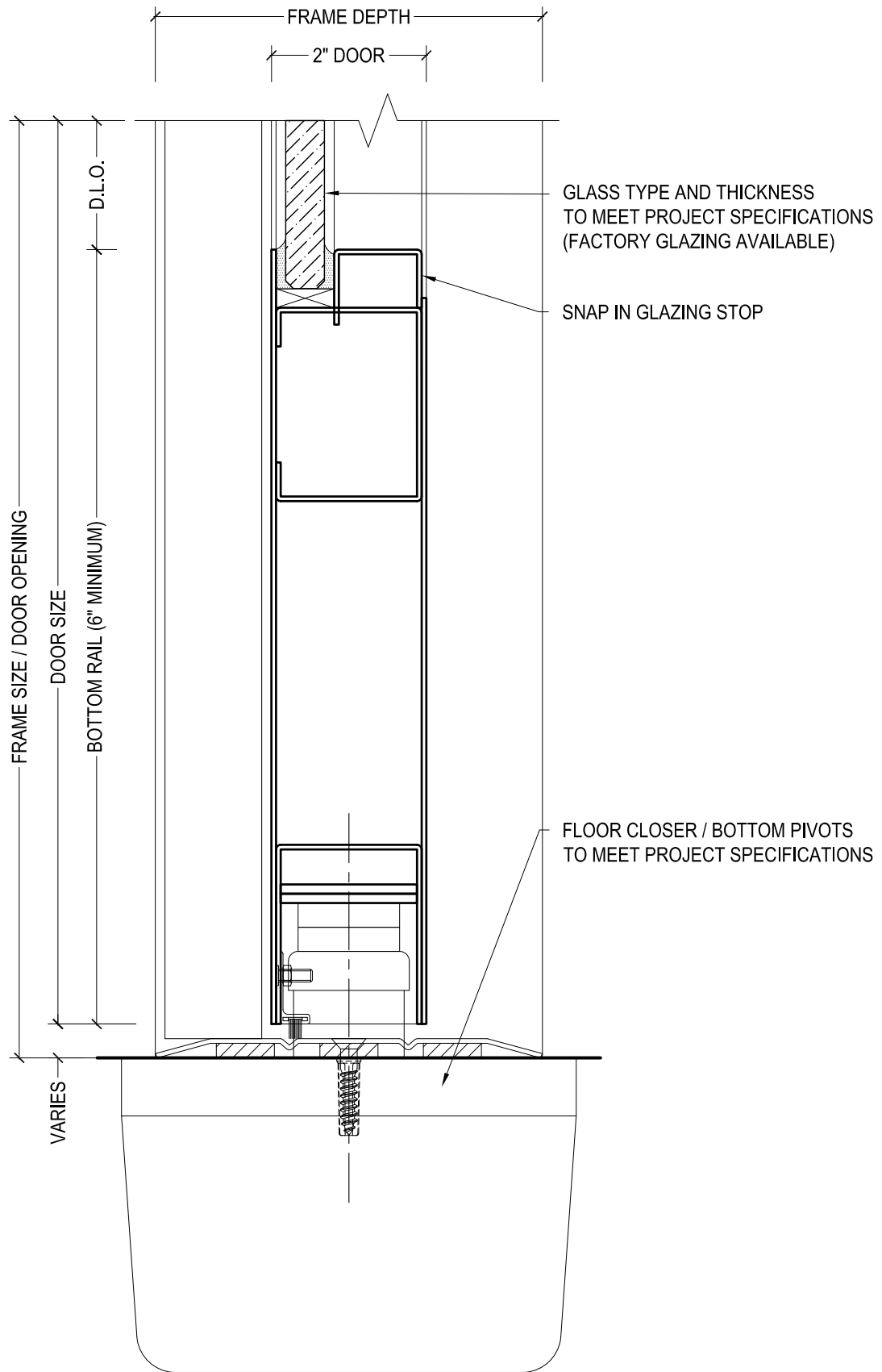
825 ALLEN ST • JAMESTOWN, NY 14701 • (716) 664-3811 • WWW.DAWSONDOORS.COM

DRAWN BY:	JBL	DRAWING DATE:	11/21/19
SERIES #:	009-CP	DRAWING #:	9CPTRFS50
DESCRIPTION:	HEADER / TOP RAIL - RETAIL SERIES CENTER PIVOTED DOORS		



825 ALLEN ST • JAMESTOWN, NY 14701 • (716) 664-3811 • WWW.DAWSONDOORS.COM

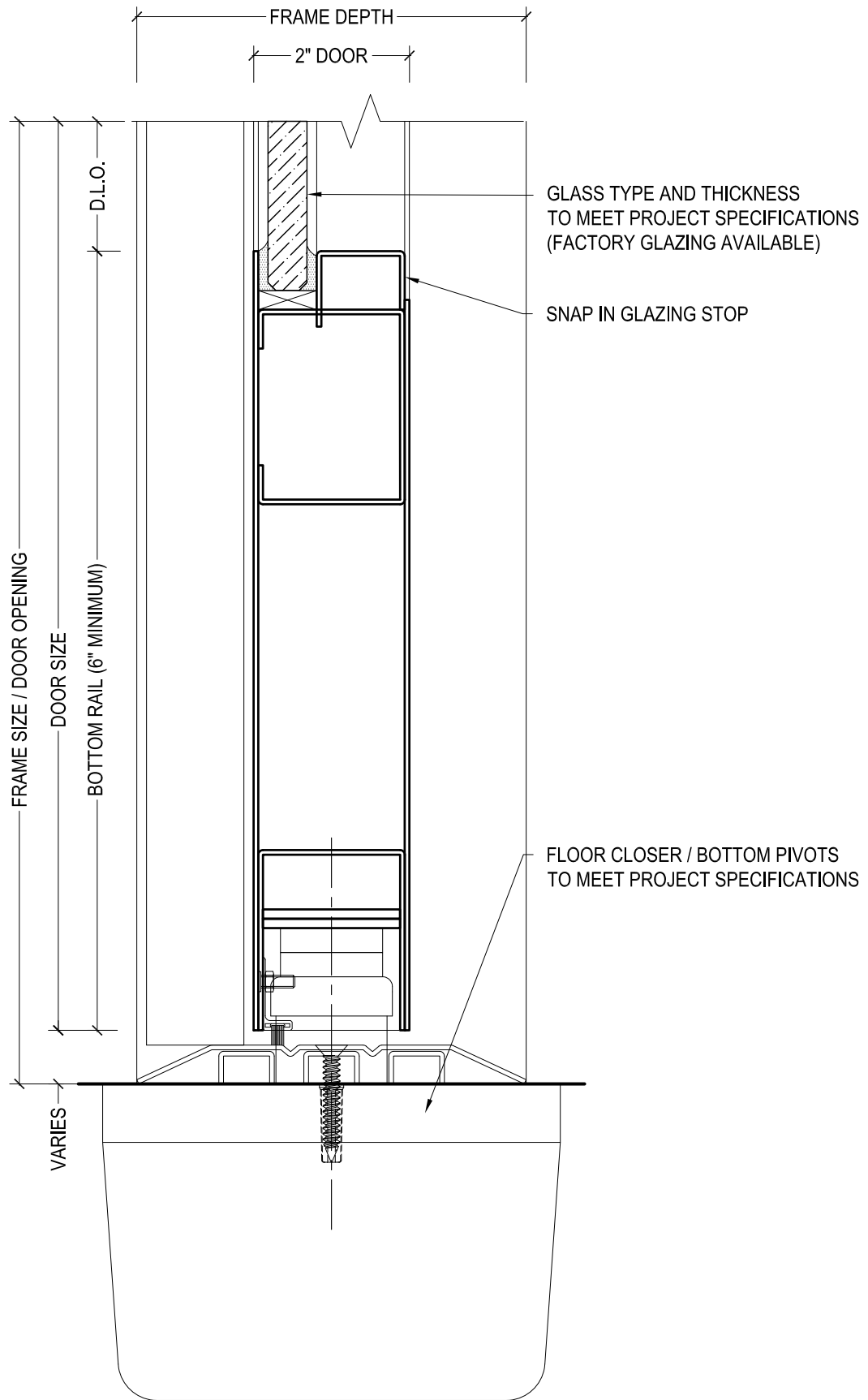
DRAWN BY:	JBL	DRAWING DATE:	11/21/19
SERIES #:	009-CP	DRAWING #:	9CCBNFS50
DESCRIPTION:	BOTTOM RAIL / FLOOR CLOSER - RETAIL SERIES CENTER PIVOTED DOORS - NO THRESHOLD -		



DAWSON DOORS

825 ALLEN ST • JAMESTOWN, NY 14701 • (716) 664-3811 • WWW.DAWSONDOORS.COM

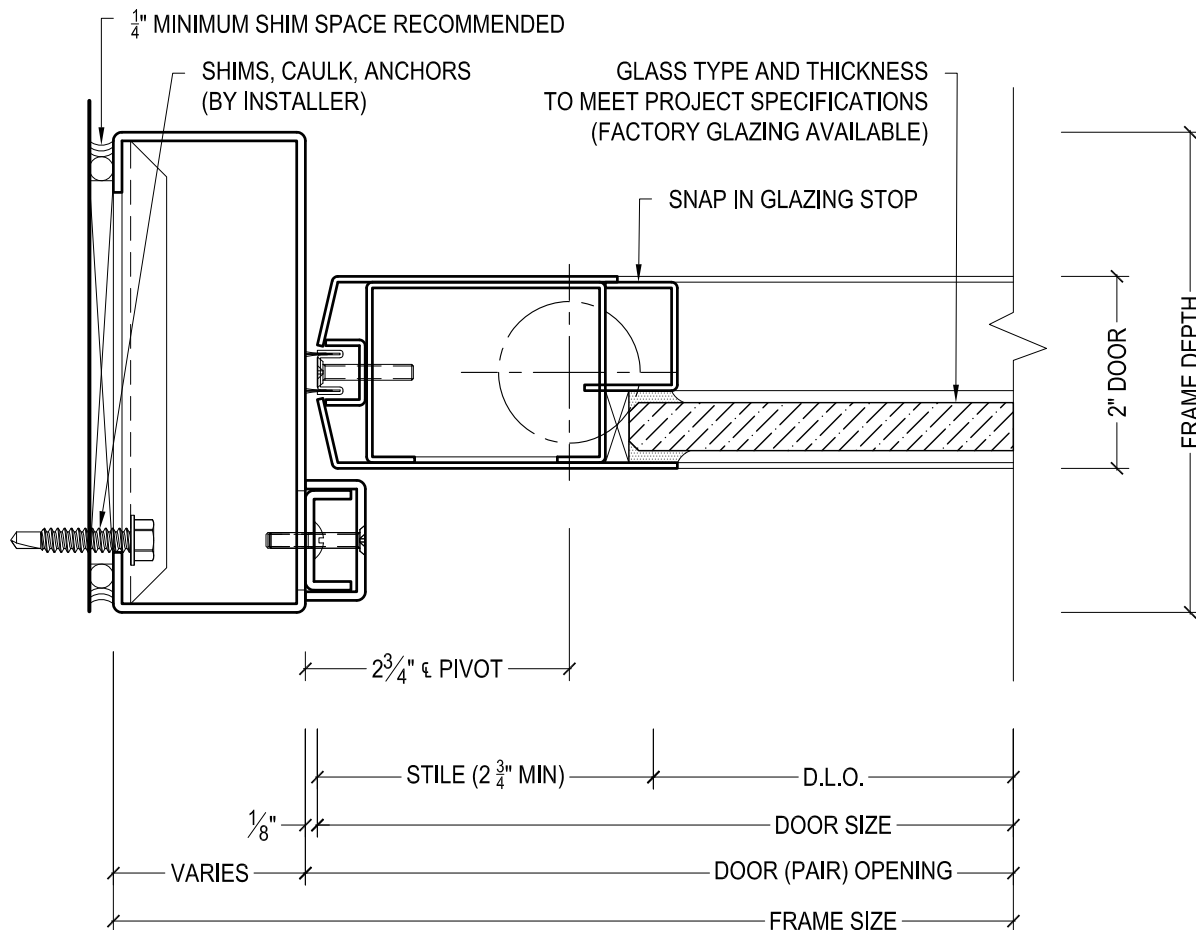
DRAWN BY:	JBL	DRAWING DATE:	11/21/19
SERIES #:	009-CP	DRAWING #:	9CCBQFS50
DESCRIPTION:	BOTTOM RAIL / FLOOR CLOSER - RETAIL SERIES CENTER PIVOTED DOORS - 1/4" THRESHOLD -		



DAWSON DOORS

825 ALLEN ST • JAMESTOWN, NY 14701 • (716) 664-3811 • WWW.DAWSONDOORS.COM

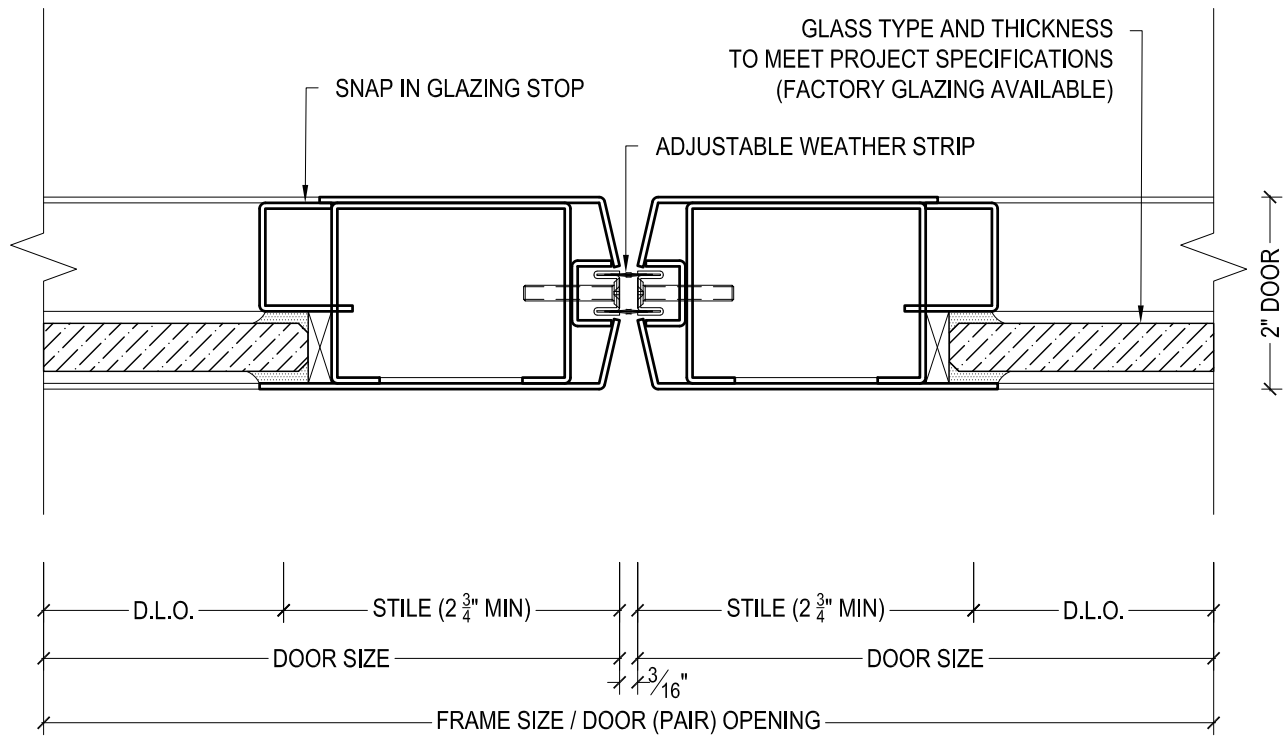
DRAWN BY:	JBL	DRAWING DATE:	11/21/19
SERIES #:	009-CP	DRAWING #:	9CCBHFS50
DESCRIPTION:	BOTTOM RAIL / FLOOR CLOSER - RETAIL SERIES CENTER PIVOTED DOORS - 1/2" THRESHOLD -		



DAWSON DOORS

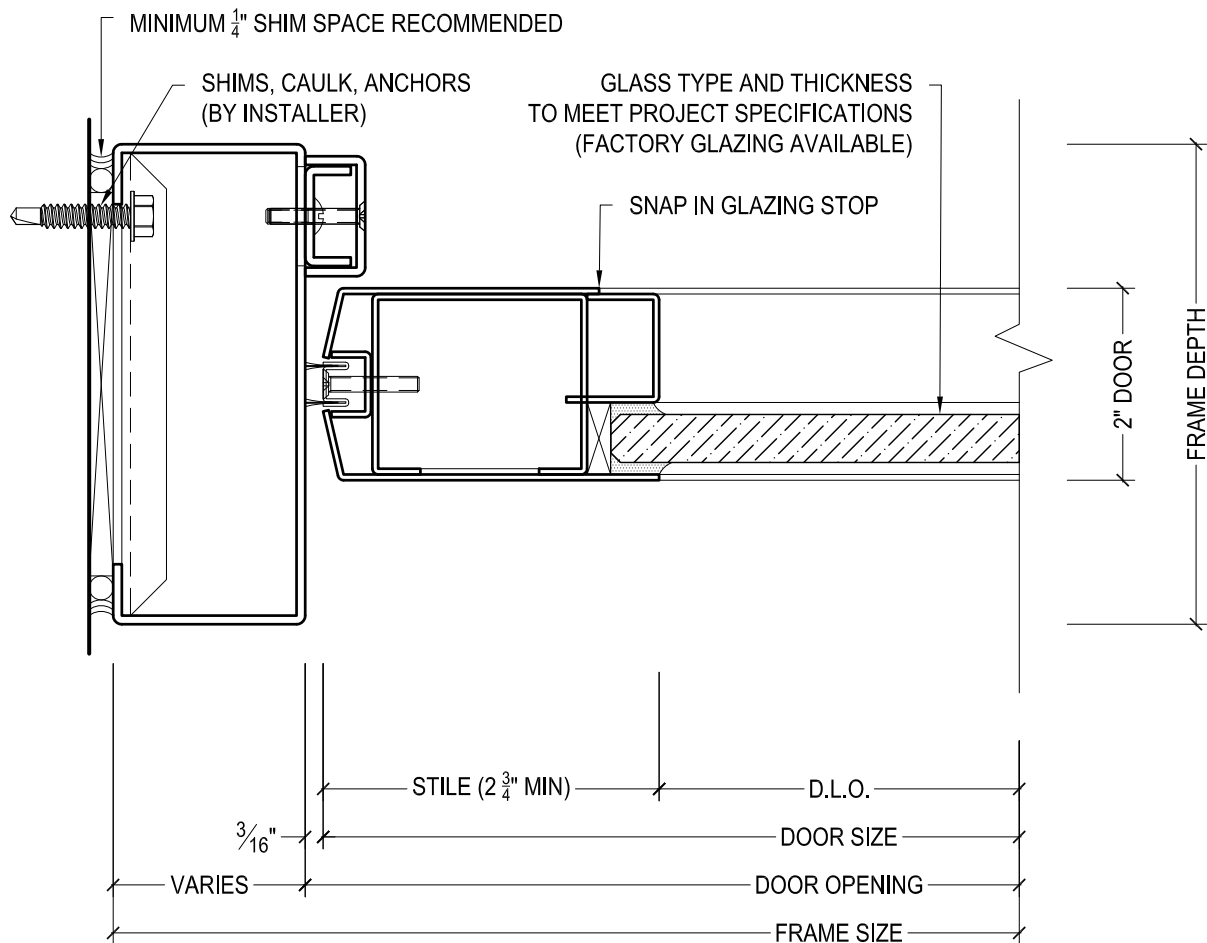
825 ALLEN ST • JAMESTOWN, NY 14701 • (716) 664-3811 • WWW.DAWSONDOORS.COM

DRAWN BY:	JBL	DRAWING DATE:	11/21/19
SERIES #:	009-CP	DRAWING #:	9CPPSFS50
DESCRIPTION:	JAMB / PIVOT STILE - RETAIL SERIES CENTER PIVOTED DOORS		



825 ALLEN ST • JAMESTOWN, NY 14701 • (716) 664-3811 • WWW.DAWSONDOORS.COM

DRAWN BY:	JBL	DRAWING DATE:	11/21/19
SERIES #:	009-CP	DRAWING #:	9CPMSFS50
DESCRIPTION:	MEETING STILES - RETAIL SERIES CENTER PIVOTED DOORS		



825 ALLEN ST • JAMESTOWN, NY 14701 • (716) 664-3811 • WWW.DAWSONDOORS.COM

DRAWN BY:

JBL

DRAWING DATE:

11/21/19

SERIES #:

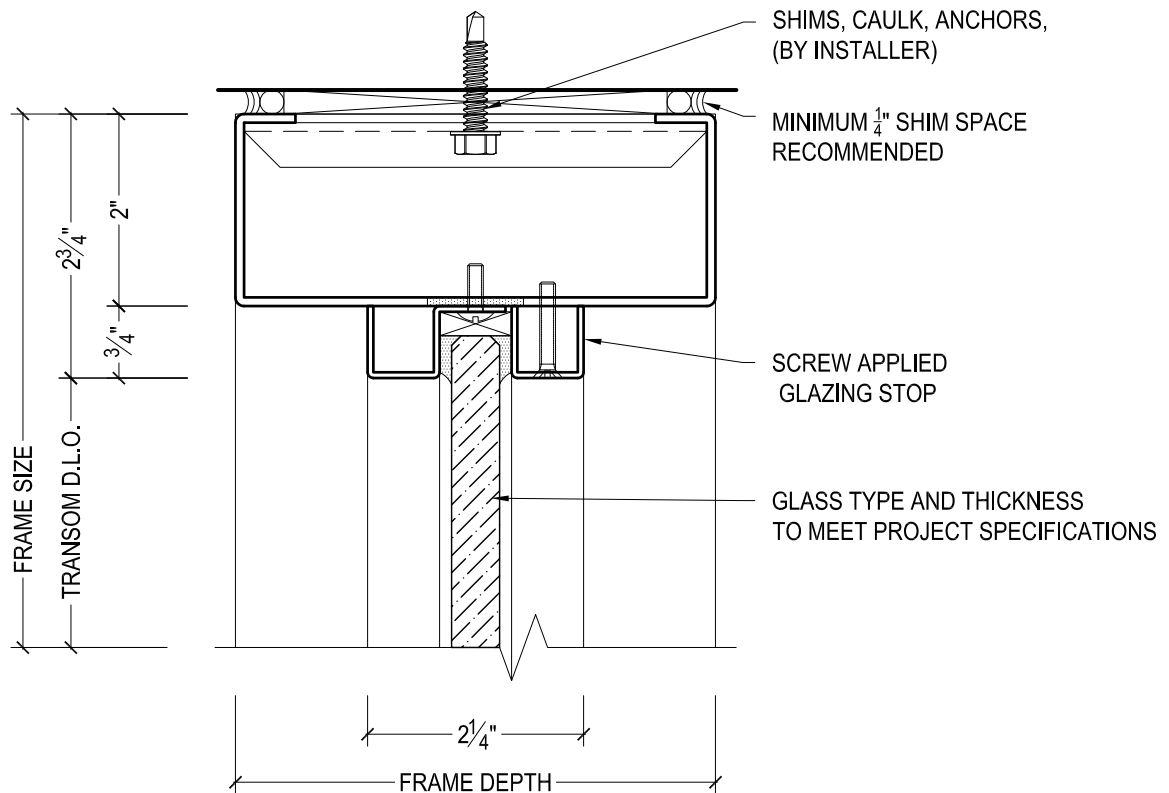
009-CP

DRAWING #:

9CPLSFS50

DESCRIPTION:

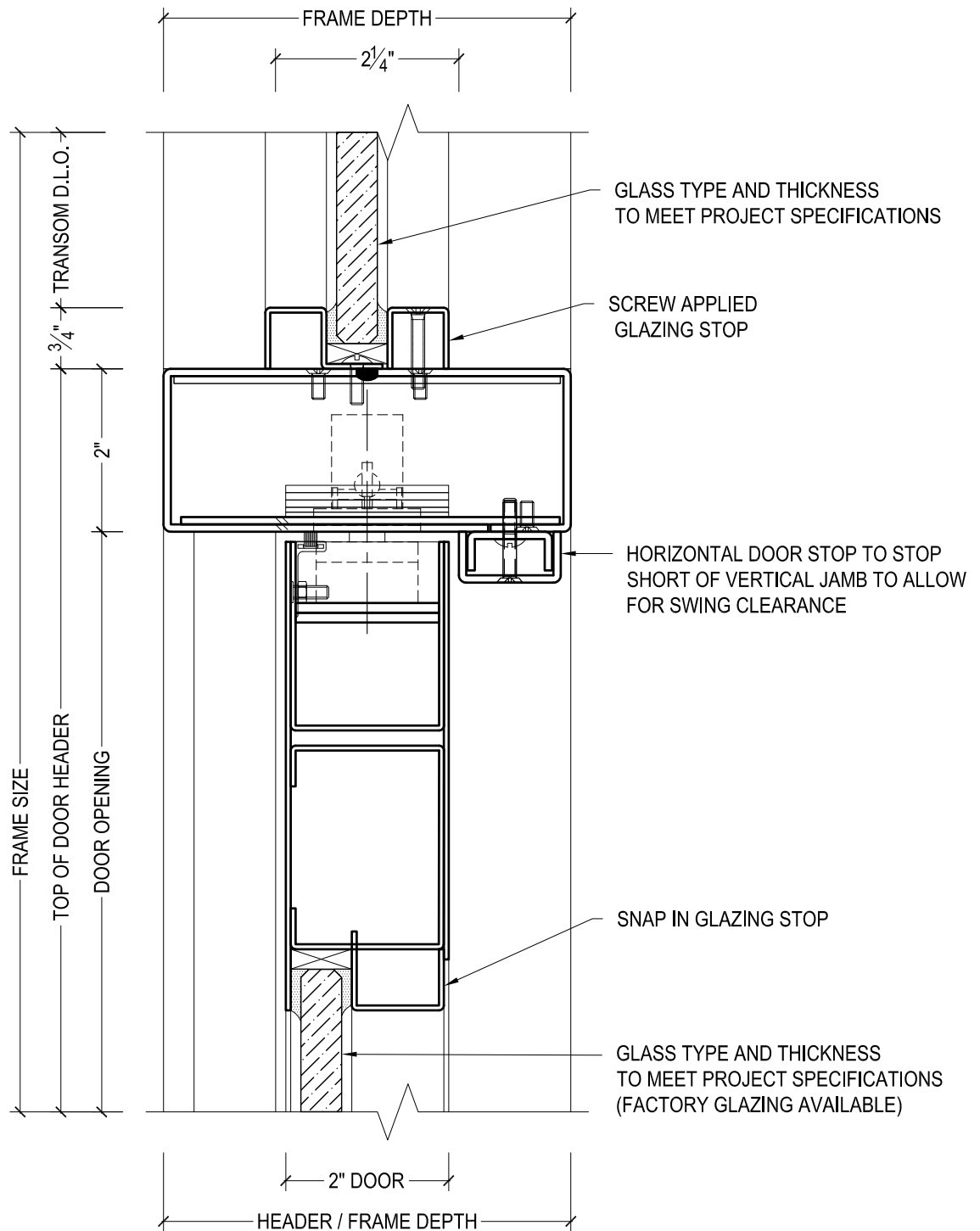
LOCK JAMB / STILE - RETAIL SERIES CENTER PIVOTED DOORS



DAWSON DOORS

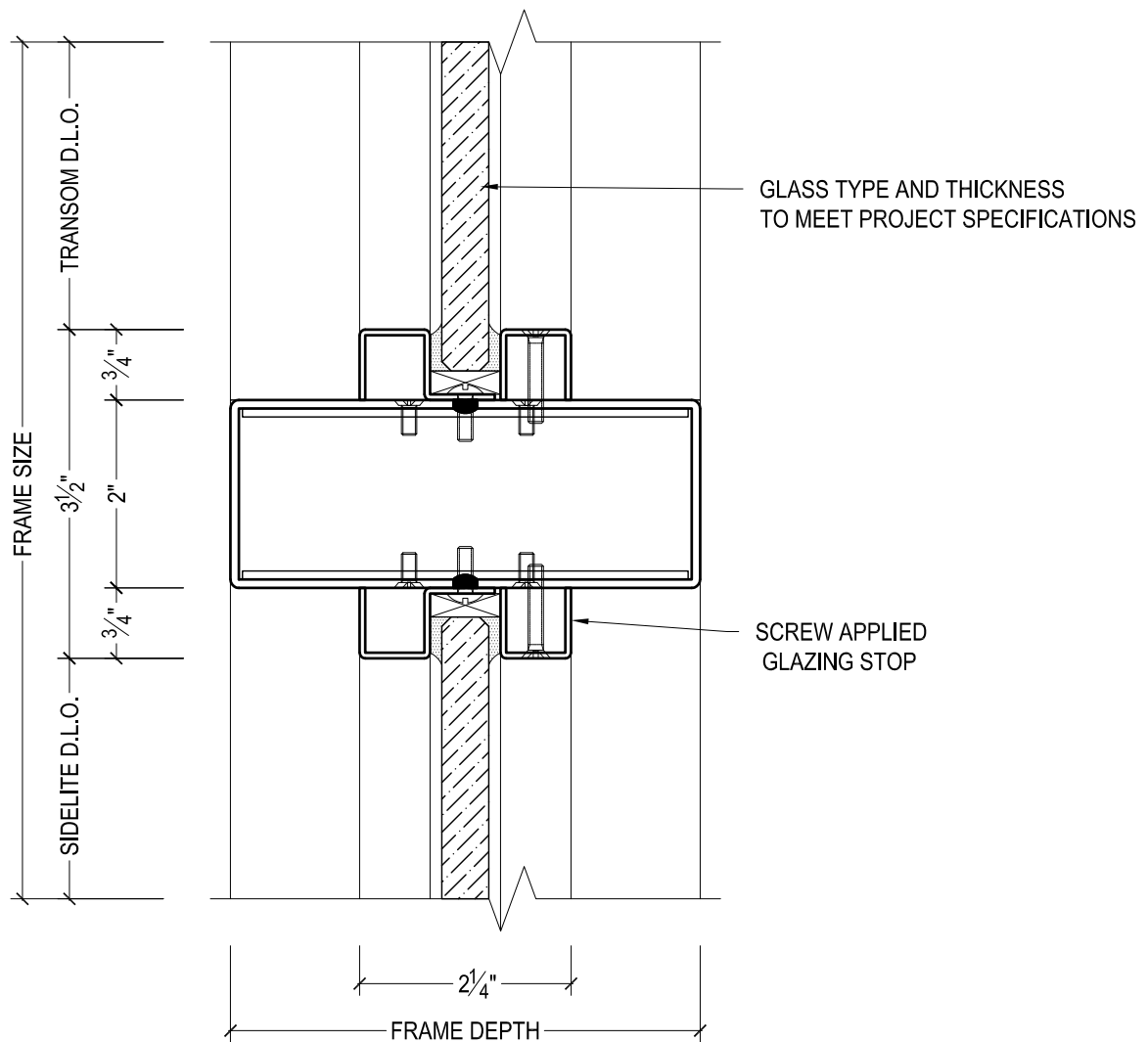
825 ALLEN ST • JAMESTOWN, NY 14701 • (716) 664-3811 • WWW.DAWSONDOORS.COM

DRAWN BY:	JBL	DRAWING DATE:	11/21/19
SERIES #:	009-CP	DRAWING #:	FXXSHAS50
DESCRIPTION:	TRANSOM HEADER WITH APPLIED STOPS		



825 ALLEN ST • JAMESTOWN, NY 14701 • (716) 664-3811 • WWW.DAWSONDOORS.COM

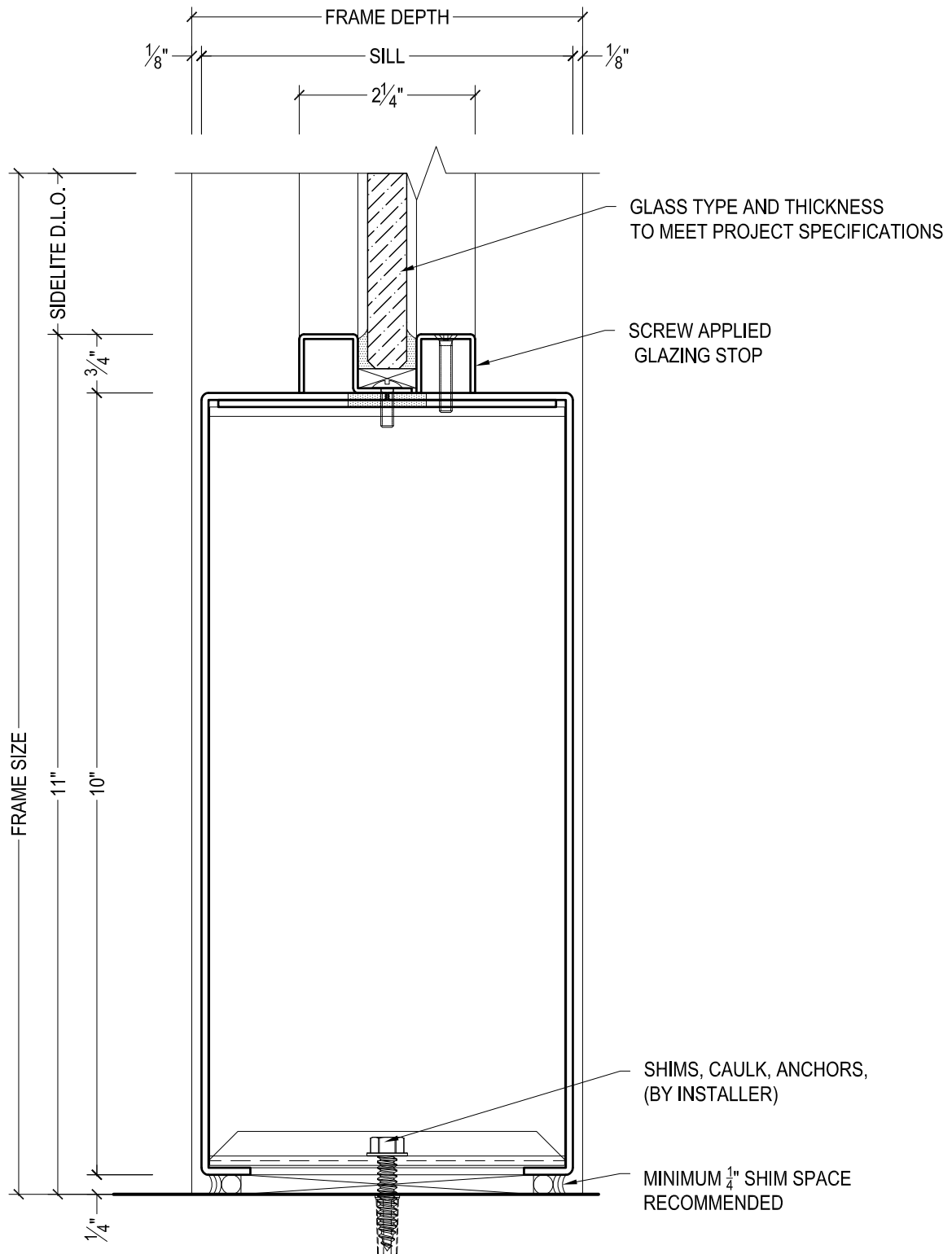
DRAWN BY:	JBL	DRAWING DATE:	11/21/19
SERIES #:	009-CP	DRAWING #:	9CPTHFS50
DESCRIPTION:	HEADER / TOP RAIL - RETAIL SERIES CENTER PIVOTED DOORS WITH TRANSOM ABOVE WITH APPLIED STOPS		



DAWSON DOORS

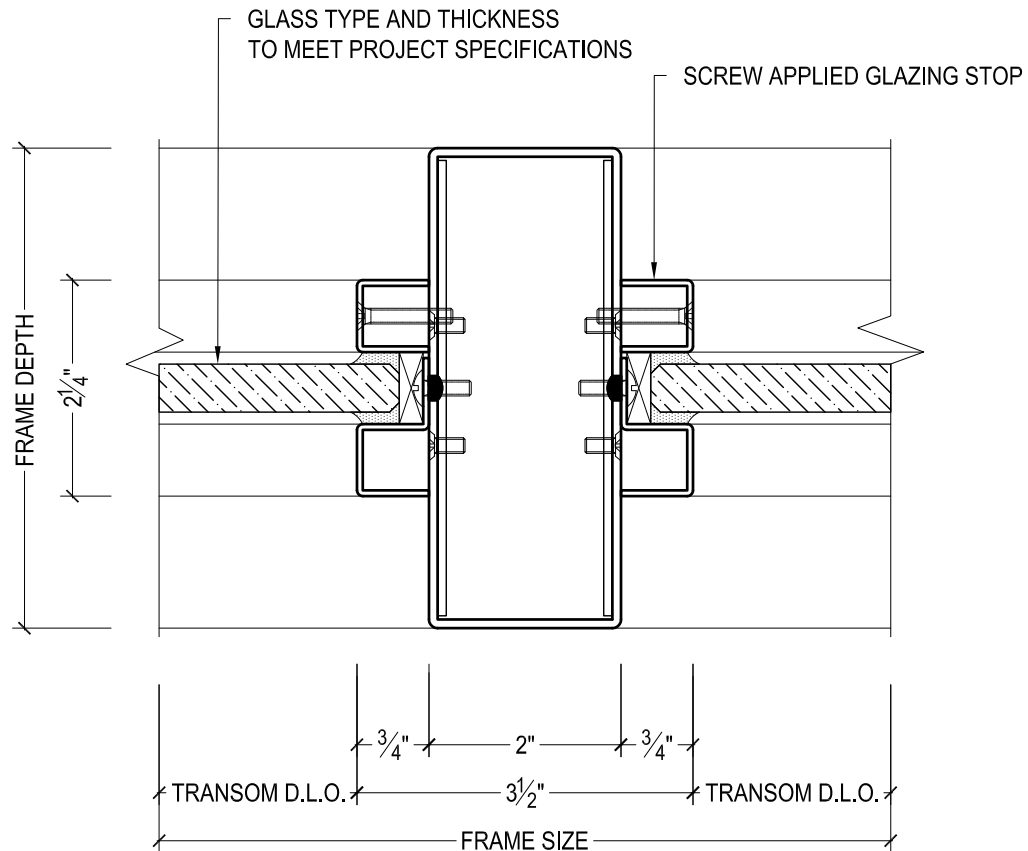
825 ALLEN ST • JAMESTOWN, NY 14701 • (716) 664-3811 • WWW.DAWSONDOORS.COM

DRAWN BY:	JBL	DRAWING DATE:	11/21/19
SERIES #:	009-CP	DRAWING #:	FXXSCAS50
DESCRIPTION:	SIDELITE BELOW & TRANSOM ABOVE WITH APPLIED STOPS		



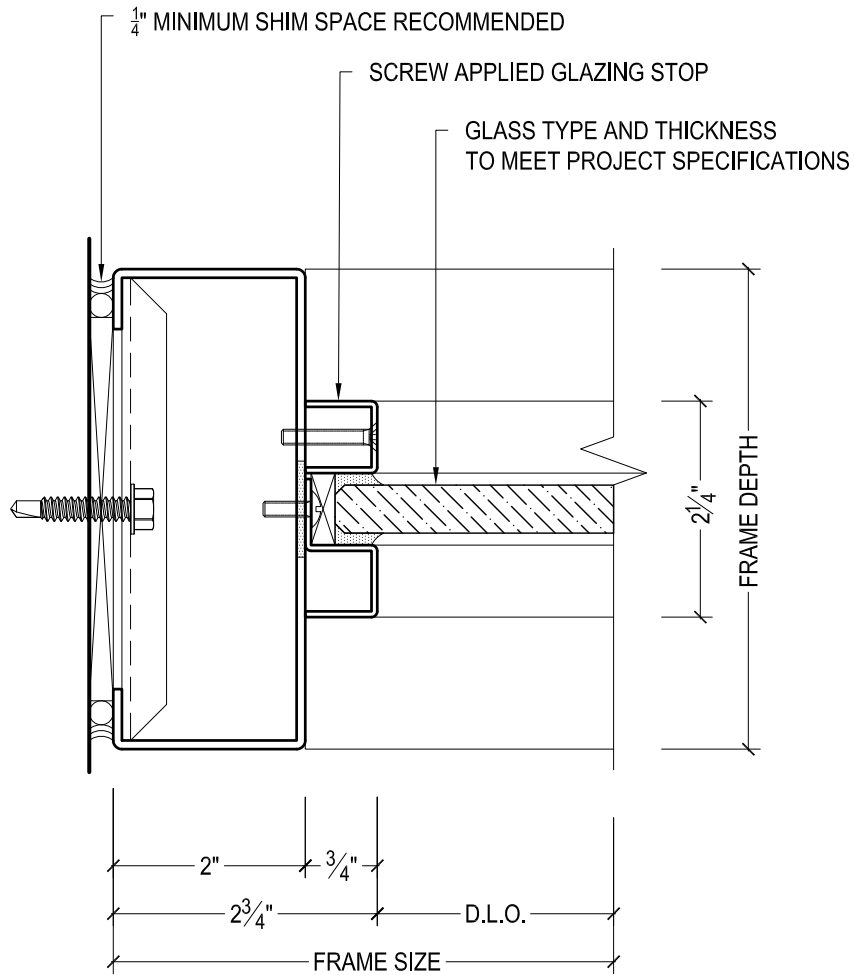
DAWSON DOORS

DRAWN BY:	JBL	DRAWING DATE:	11/21/19
SERIES #:	009-CP	DRAWING #:	FXXSSAS50
DESCRIPTION:	SIDELITE SILL WITH APPLIED STOPS		



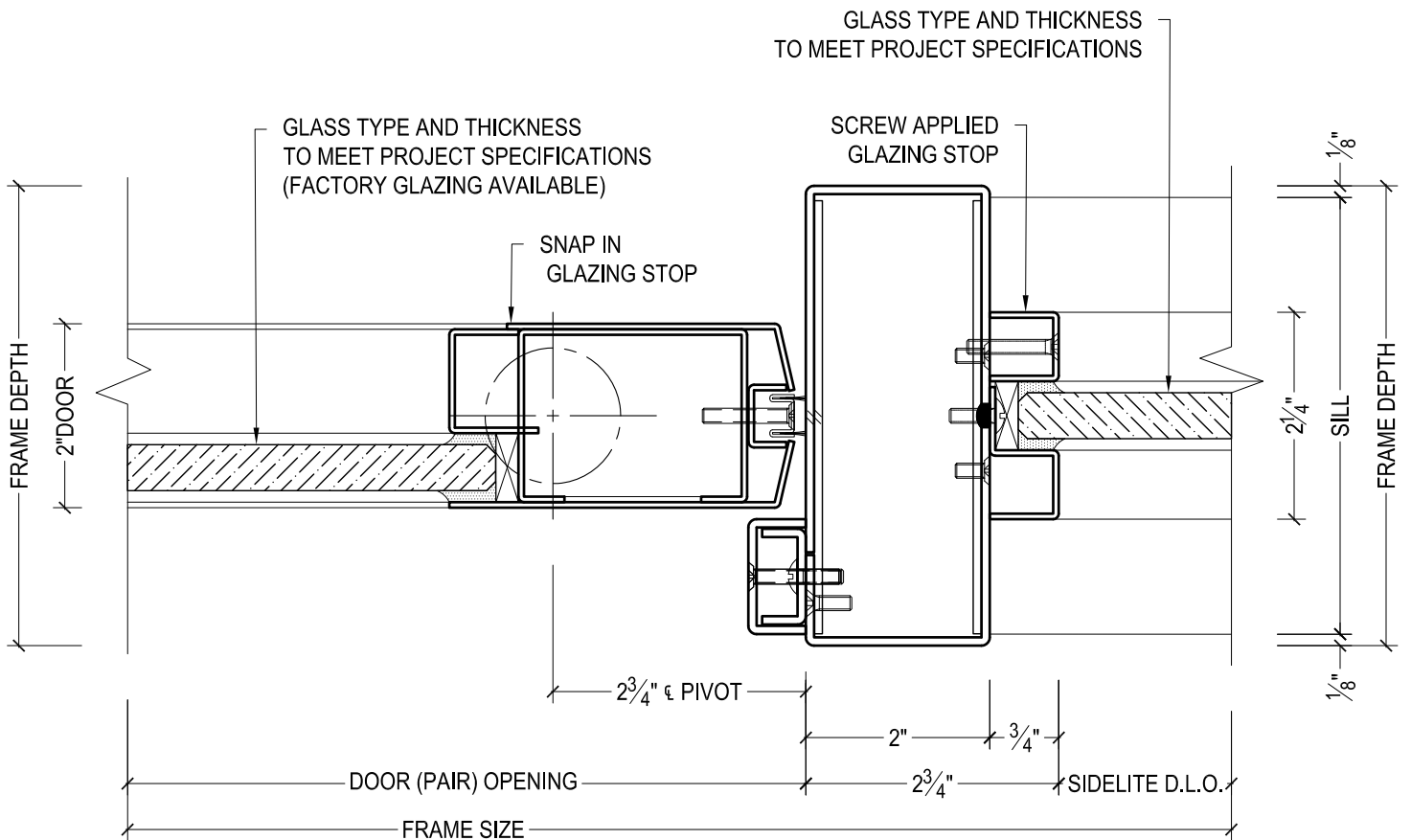
825 ALLEN ST • JAMESTOWN, NY 14701 • (716) 664-3811 • WWW.DAWSONDOORS.COM

DRAWN BY:	JBL	DRAWING DATE:	11/21/19
SERIES #:	009-CP	DRAWING #:	FXXTVAS50
DESCRIPTION:	TRANSOM MULLION WITH APPLIED STOPS		



825 ALLEN ST • JAMESTOWN, NY 14701 • (716) 664-3811 • WWW.DAWSONDOORS.COM

DRAWN BY:	JBL	DRAWING DATE:	11/21/19
SERIES #:	009-CP	DRAWING #:	FXXTWAS50
DESCRIPTION:	TRANSOM JAMB WITH APPLIED STOPS		



825 ALLEN ST • JAMESTOWN, NY 14701 • (716) 664-3811 • WWW.DAWSONDOORS.COM

DRAWN BY:	JBL	DRAWING DATE:	11/21/19
SERIES #:	009-CP	DRAWING #:	9CPSMAS50
DESCRIPTION:	JAMB / PIVOT STILE / SIDELITE MULLION - RETAIL SERIES CENTER PIVOTED DOORS WITH FIXED FLAT GLAZING. JAMB TREATED AS SIDELITE MULLION		