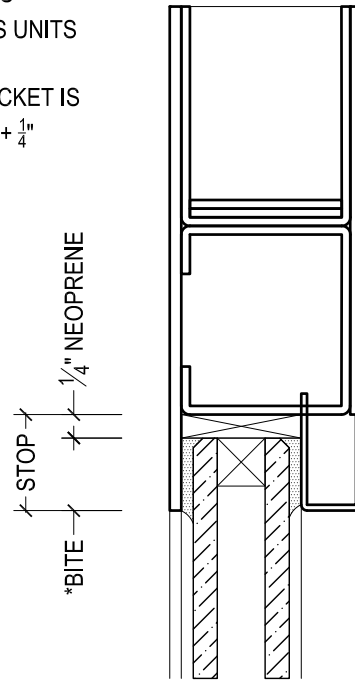
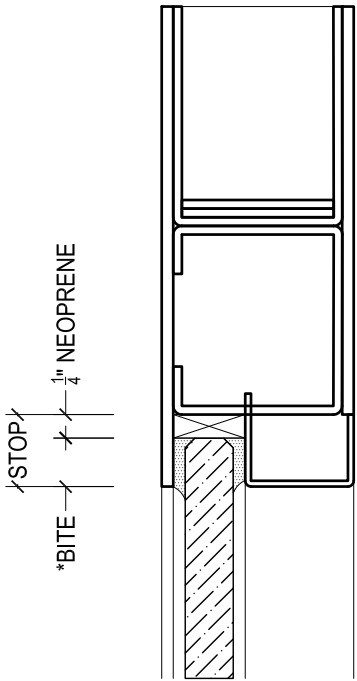


*STANDARD GLASS BITE IS
 $\frac{1}{2}$ " FOR MONILITHIC AND
 LAMINATED GLASS

$\frac{3}{4}$ " FOR INSULATE GLASS UNITS

**STANDARD GLASS POCKET IS
 GLASS THICKNESS + $\frac{1}{4}$ "

2" STANDARD



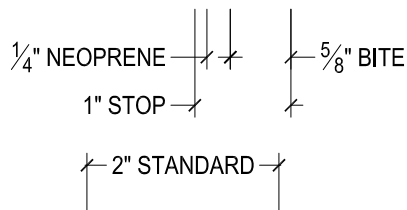
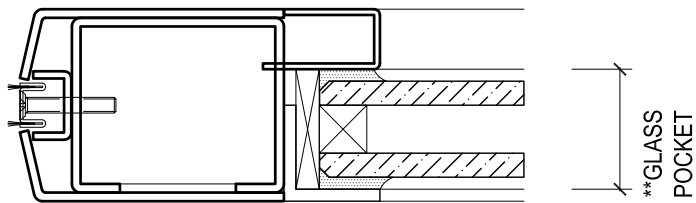
**GLASS
 POCKET

**FIXED FLAT CONSTRUCTION
 ONLY AVAILABLE ON
 RUGGED SERIES DOORS
 (11 GA / .120" MATERIAL)**

**GLASS
 POCKET

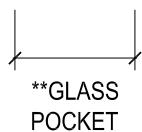
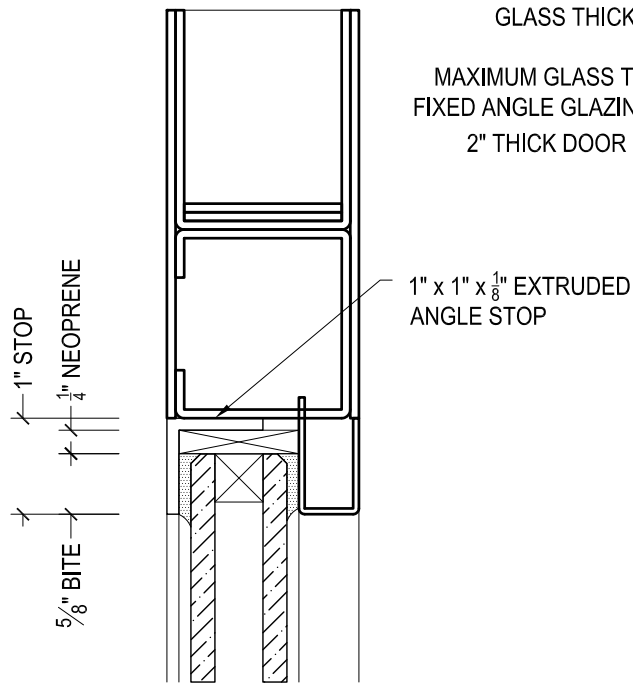


DRAWN BY:	AG	DRAWING DATE:	9/30/19
SET #:	GLAZING	DRAWING #:	001-01
DESCRIPTION:	GLAZING OPTIONS FOR STANDARD 2" THICK RUGGED SERIES DOOR - FIXED FLAT GLAZING		



**STANDARD GLASS POCKET IS
GLASS THICKNESS + 1/4"

MAXIMUM GLASS THICKNESS FOR
FIXED ANGLE GLAZING ON STANDARD
2" THICK DOOR IS 1 1/8" THICK

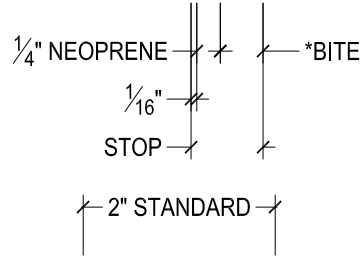
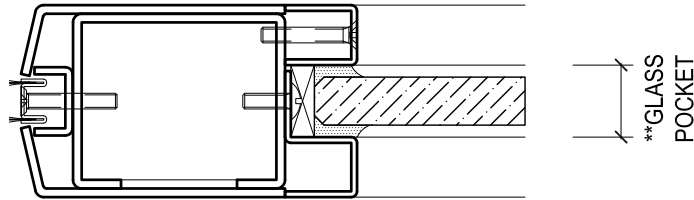


FIXED ANGLE AVAILABLE ON
STANDARD SERIES DOORS
(13 GA / .090" MATERIALS)



825 ALLEN ST • JAMESTOWN, NY 14701 • (716) 664-3811 • WWW.DAWSONDOORS.COM

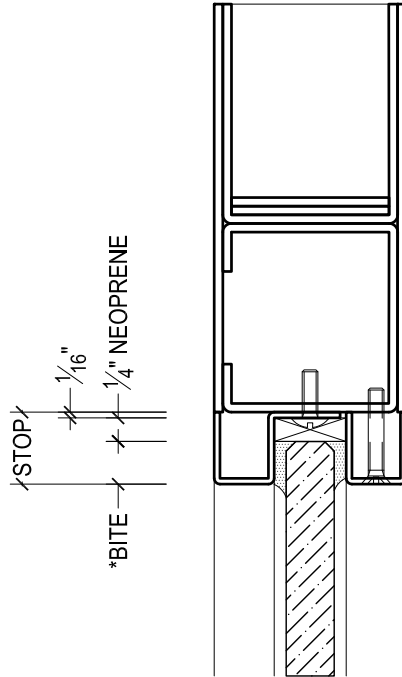
DRAWN BY:	AG	DRAWING DATE:	9/30/19
SET #:	GLAZING	DRAWING #:	002-01
DESCRIPTION:	GLAZING OPTIONS FOR STANDARD 2" THICK STANDARD SERIES DOOR - FIXED ANGLE GLAZING		



*STANDARD GLASS BITE IS
 $\frac{7}{16}$ " FOR MONILITHIC AND
 LAMINATED GLASS

**STANDARD GLASS POCKET IS
 GLASS THICKNESS + $\frac{1}{4}$ "

MAXIMUM GLASS THICKNESS
 FOR APPLIED GLASS STOPS
 ON STANDARD 2" THICK
 DOORS IS $\frac{3}{4}$ " THICK

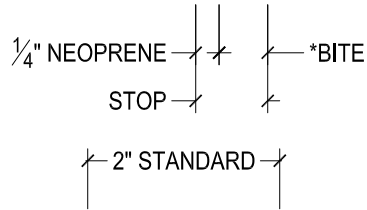
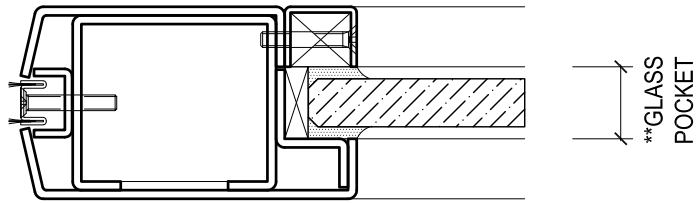


****GLASS
 POCKET**



825 ALLEN ST • JAMESTOWN, NY 14701 • (716) 664-3811 • WWW.DAWSONDOORS.COM

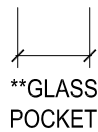
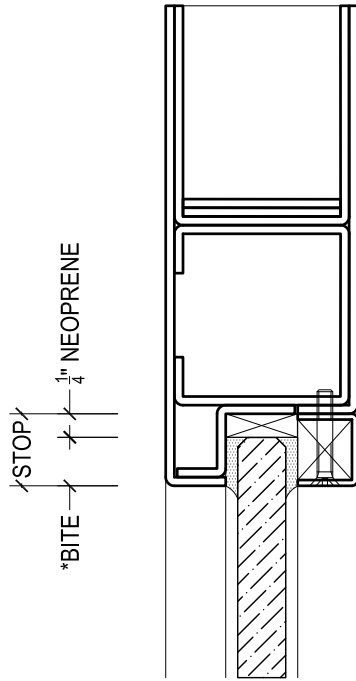
DRAWN BY:	AG	DRAWING DATE:	9/30/19
SET #:	GLAZING	DRAWING #:	002-02
DESCRIPTION:	GLAZING OPTIONS FOR STANDARD 2" THICK STANDARD SERIES DOOR - APPLIED STOP GLAZING		



*STANDARD GLASS BITE IS $\frac{1}{2}$ " FOR MONILITHIC AND LAMINATED GLASS

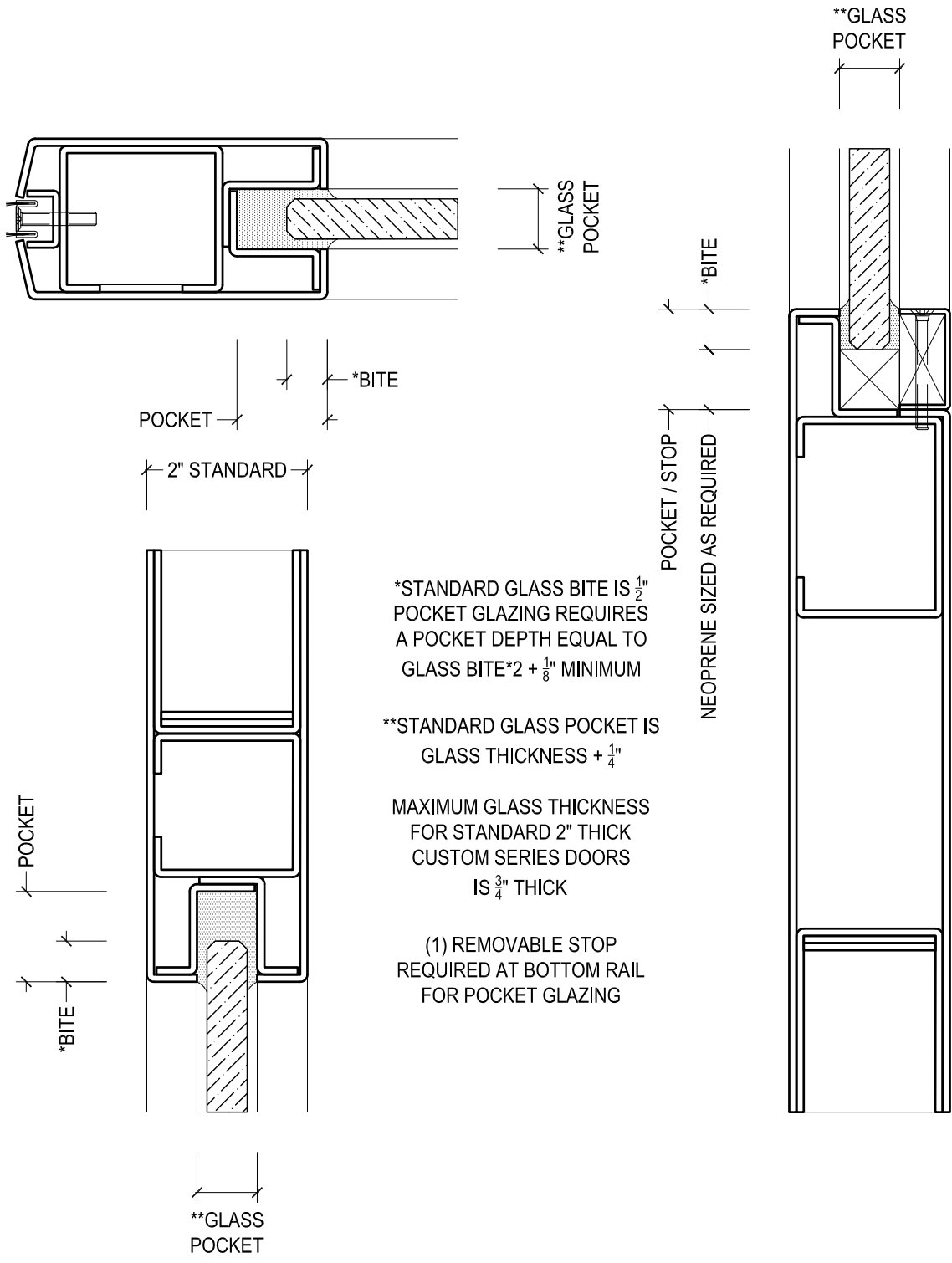
**STANDARD GLASS POCKET IS GLASS THICKNESS + $\frac{1}{4}$ "

MAXIMUM GLASS THICKNESS FOR STANDARD 2" THICK CUSTOM SERIES DOORS IS $\frac{3}{4}$ " THICK



825 ALLEN ST • JAMESTOWN, NY 14701 • (716) 664-3811 • WWW.DAWSONDOORS.COM

DRAWN BY:	AG	DRAWING DATE:	9/30/19
SET #:	GLAZING	DRAWING #:	003-01
DESCRIPTION:	GLAZING OPTIONS FOR STANDARD 2" THICK CUSTOM SERIES DOOR - CUSTOM SERIES GLAZING		

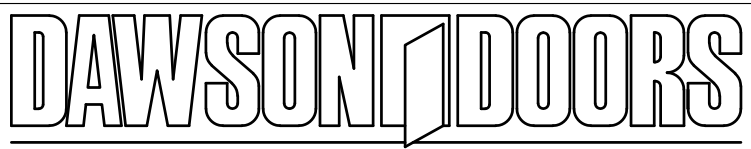


*STANDARD GLASS BITE IS $\frac{1}{2}$ "
 POCKET GLAZING REQUIRES
 A POCKET DEPTH EQUAL TO
 GLASS BITE*2 + $\frac{1}{8}$ " MINIMUM

**STANDARD GLASS POCKET IS
 GLASS THICKNESS + $\frac{1}{4}$ "

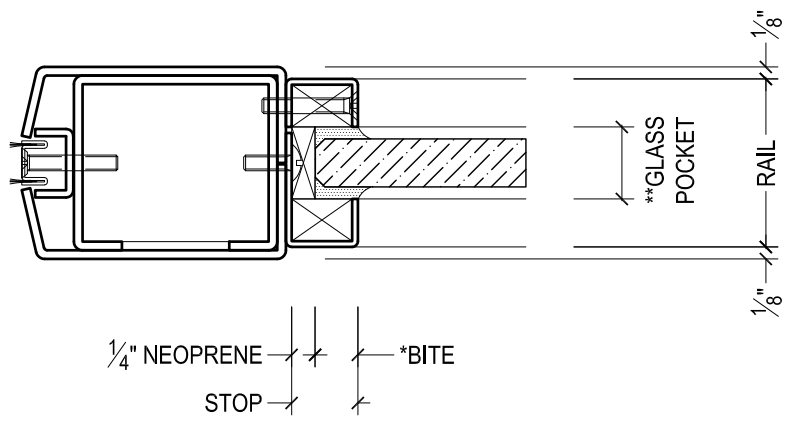
MAXIMUM GLASS THICKNESS
 FOR STANDARD 2" THICK
 CUSTOM SERIES DOORS
 IS $\frac{3}{4}$ " THICK

(1) REMOVABLE STOP
 REQUIRED AT BOTTOM RAIL
 FOR POCKET GLAZING



825 ALLEN ST • JAMESTOWN, NY 14701 • (716) 664-3811 • WWW.DAWSONDOORS.COM

DRAWN BY:	AG	DRAWING DATE:	9/30/19
SET #:	GLAZING	DRAWING #:	003-02
DESCRIPTION:	GLAZING OPTIONS FOR STANDARD 2" THICK CUSTOM SERIES DOOR - POCKET GLAZING		

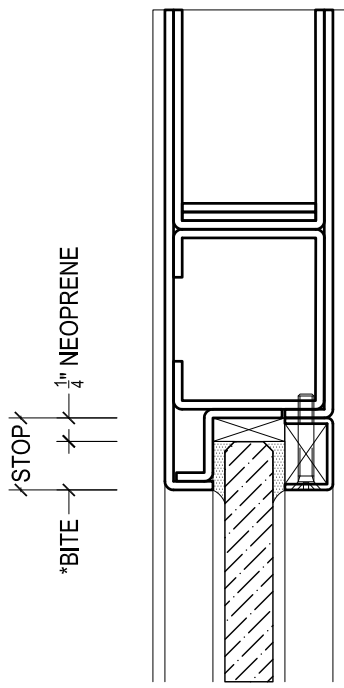


2" STANDARD

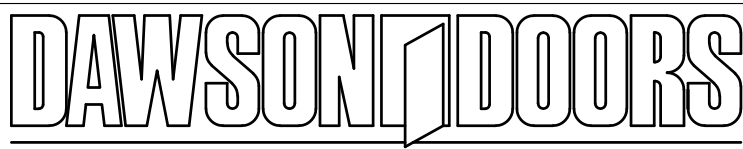
*STANDARD GLASS BITE IS $\frac{7}{16}$ " AT STILES, $\frac{1}{2}$ " AT RAILS FOR MONOLITHIC AND LAMINATED GLASS

**STANDARD GLASS POCKET IS GLASS THICKNESS + $\frac{1}{4}$ "

MAXIMUM GLASS THICKNESS FOR STANDARD 2" THICK DESIGNER SERIES DOORS IS $\frac{1}{2}$ " THICK



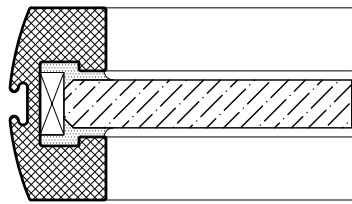
**GLASS POCKET



825 ALLEN ST • JAMESTOWN, NY 14701 • (716) 664-3811 • WWW.DAWSONDOORS.COM

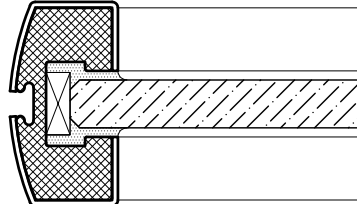
DRAWN BY:	AG	DRAWING DATE:	9/30/19
SET #:	GLAZING	DRAWING #:	005-01
DESCRIPTION:	GLAZING OPTIONS FOR STANDARD 2" THICK DESIGNER SERIES DOOR - DESIGNER SERIES GLAZING		

NO CLADDING



***GLASS
POCKET

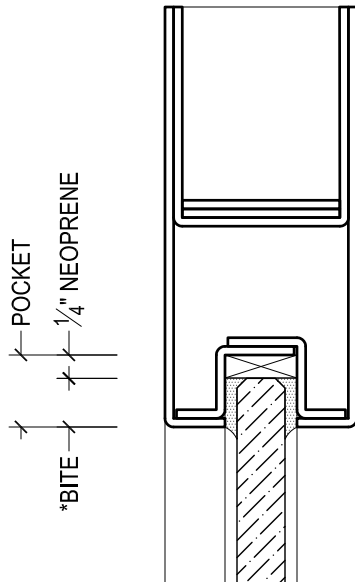
CLADDING



***GLASS
POCKET

1/4" NEOPRENE | 7/16" BITE | 1 1/16" POCKET

1/4" NEOPRENE | 1/2" BITE | 3/4" POCKET



POCKET | 1/4" NEOPRENE | BITE

**GLASS
POCKET

*STANDARD GLASS BITE IS
1/2" FOR MONOLITHIC AND
LAMINATED GLASS

**RAIL GLASS POCKET SIZED AS
REQUIRED BY ENGINEERING

***STILE GLASS POCKET
EXTRUDED AS 11/16", MACHINED
FOR THICKER GLASS

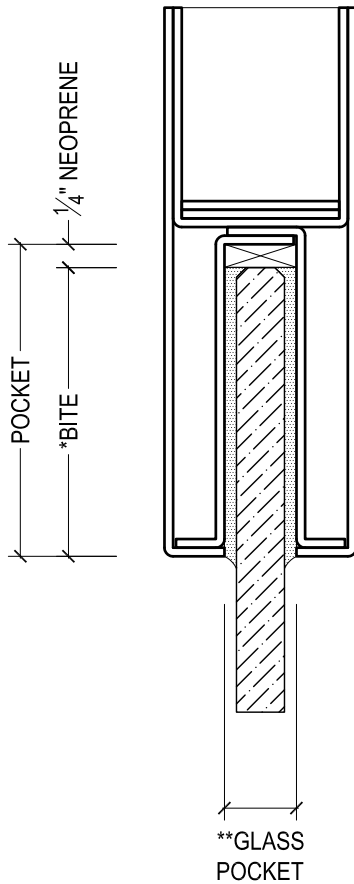
MAXIMUM GLASS THICKNESS
FOR STANDARD 2" THICK UNS
SERIES DOORS IS 3/4" THICK

UNS SERIES DOORS MUST
BE GLAZED IN FACTORY
GLASS BY OTHERS MUST BE
SENT TO DAWSON

DAWSON DOORS

825 ALLEN ST • JAMESTOWN, NY 14701 • (716) 664-3811 • WWW.DAWSONDOORS.COM

DRAWN BY:	AG	DRAWING DATE:	9/30/19
SET #:	GLAZING	DRAWING #:	006-01
DESCRIPTION:	GLAZING OPTIONS FOR STANDARD 2" THICK UNS SERIES DOOR - UNS SERIES GLAZING		

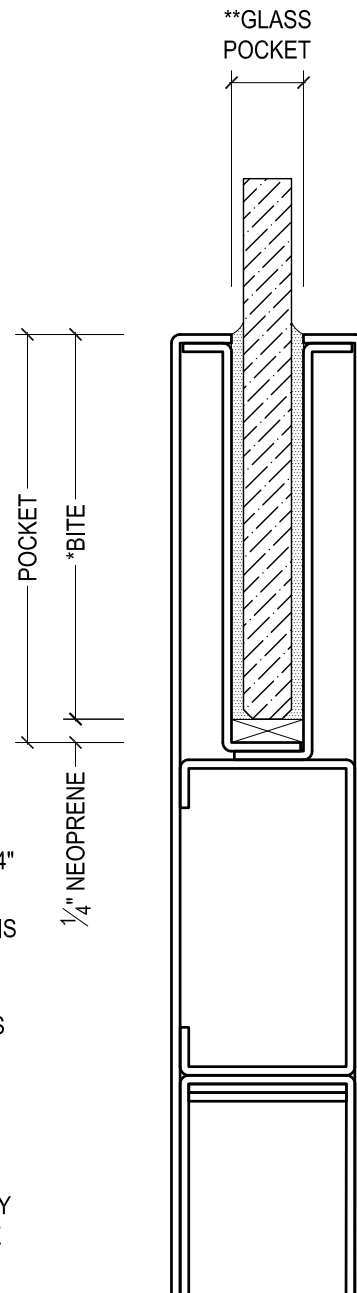


*MINIMUM GLASS BITE IS
 $2\frac{1}{2}$ " ON TOP RAILS, 3" ON
 BOTTOM RAILS, STANDARD
 BOTTOM RAIL GLASS BITE IS 4"

**STANDARD GLASS POCKET IS
 GLASS THICKNESS + $\frac{1}{4}$ "

MAXIMUM GLASS THICKNESS
 FOR STANDARD 2" THICK
 HERCULITE SERIES DOORS
 IS $\frac{3}{4}$ " THICK

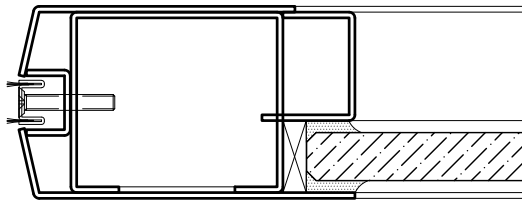
HERCULITE SERIES DOORS
 MUST BE GLAZED IN FACTORY
 GLASS BY OTHERS MUST BE
 SENT TO DAWSON



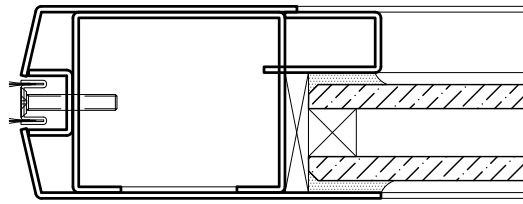
DAWSON DOORS

825 ALLEN ST • JAMESTOWN, NY 14701 • (716) 664-3811 • WWW.DAWSONDOORS.COM

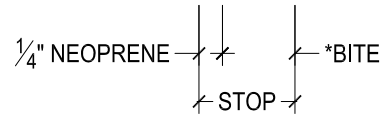
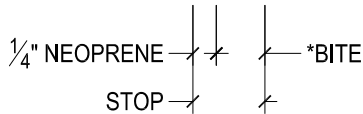
DRAWN BY:	AG	DRAWING DATE:	9/30/19
SET #:	GLAZING	DRAWING #:	007-01
DESCRIPTION:	GLAZING OPTIONS FOR STANDARD 2" THICK HERCULITE SERIES DOOR - HERCULITE SERIES GLAZING		



**GLASS
POCKET



**GLASS
POCKET

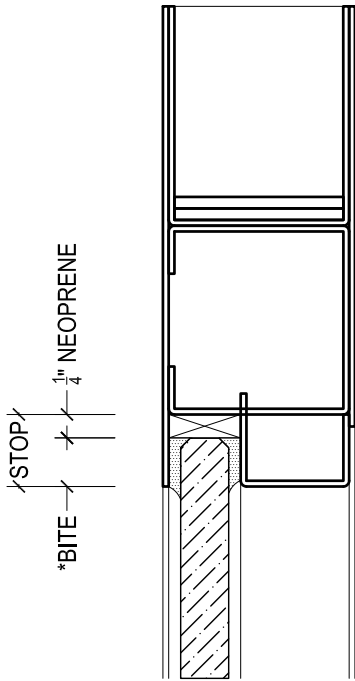


*STANDARD GLASS BITE IS
 $\frac{1}{2}$ " FOR MONILITHIC AND
LAMINATED GLASS
 $\frac{3}{4}$ " FOR INSULATE GLASS UNITS

2" STANDARD

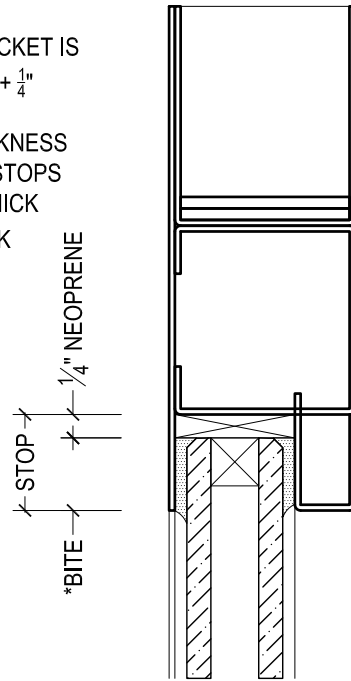
**STANDARD GLASS POCKET IS
GLASS THICKNESS + $\frac{1}{4}$ "

MAXIMUM GLASS THICKNESS
FOR APPLIED GLASS STOPS
ON STANDARD 2" THICK
DOORS IS $\frac{3}{4}$ " THICK



STOP
*BITE
 $\frac{1}{4}$ " NEOPRENE

**GLASS
POCKET



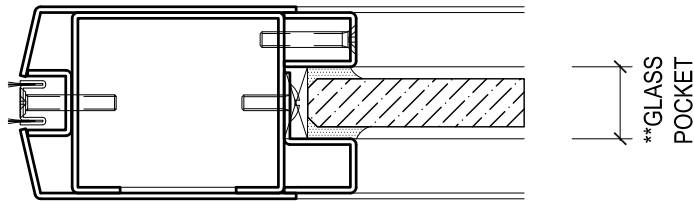
STOP
*BITE
 $\frac{1}{4}$ " NEOPRENE

**GLASS
POCKET

DAWSON DOORS

825 ALLEN ST • JAMESTOWN, NY 14701 • (716) 664-3811 • WWW.DAWSONDOORS.COM

DRAWN BY:	AG	DRAWING DATE:	9/30/19
SET #:	GLAZING	DRAWING #:	009-01
DESCRIPTION:	GLAZING OPTIONS FOR STANDARD 2" THICK RETAIL SERIES DOOR - FIXED FLAT GLAZING		



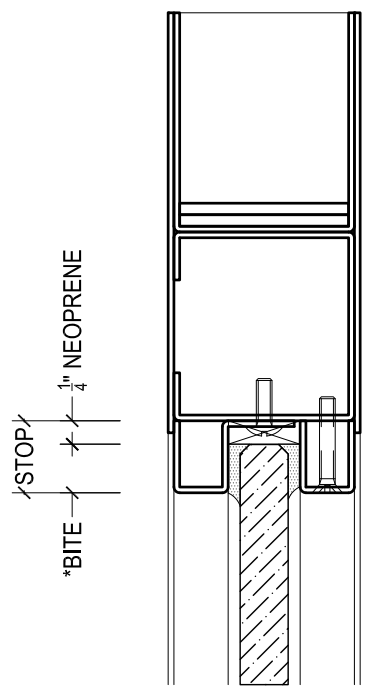
$\frac{1}{4}$ " NEOPRENE STOP *BITE

2" STANDARD

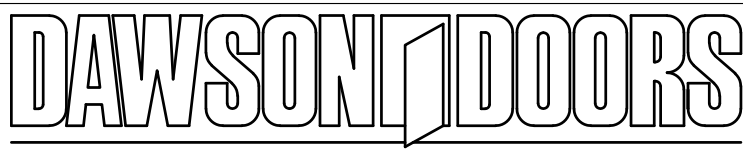
*STANDARD GLASS BITE IS $\frac{7}{16}$ " FOR MONILITHIC AND LAMINATED GLASS

**STANDARD GLASS POCKET IS GLASS THICKNESS + $\frac{1}{4}$ "

MAXIMUM GLASS THICKNESS FOR APPLIED GLASS STOPS ON STANDARD 2" THICK DOORS IS $\frac{3}{4}$ " THICK



**GLASS POCKET

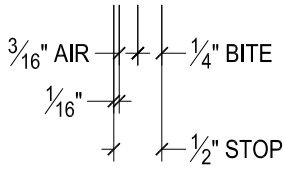
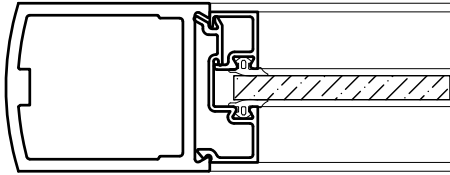


825 ALLEN ST • JAMESTOWN, NY 14701 • (716) 664-3811 • WWW.DAWSONDOORS.COM

DRAWN BY:	AG	DRAWING DATE:	9/30/19
SET #:	GLAZING	DRAWING #:	009-02
DESCRIPTION:	GLAZING OPTIONS FOR STANDARD 2" THICK RETAIL SERIES DOOR - APPLIED STOP GLAZING		

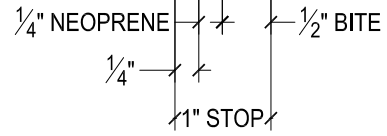
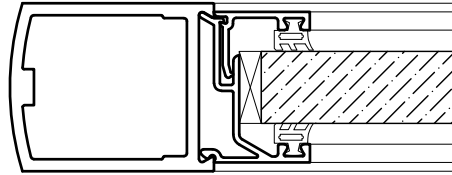
AVAILABLE GLASS STOP OPTIONS FOR ALUMINUM SERIES DOORS
 MONUMENTAL SERIES ALUMINUM DOORS USE THE SAME GLASS STOPS

1/4" THICK GLASS



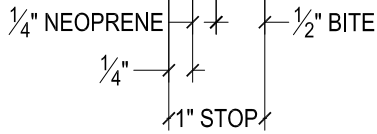
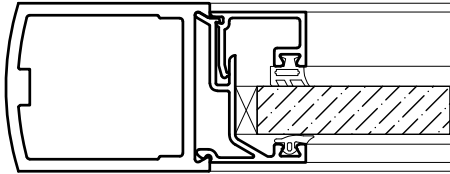
3/8" GLASS
 POCKET

3/4" THICK GLASS



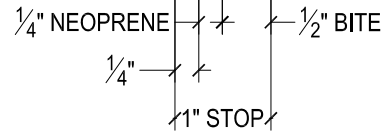
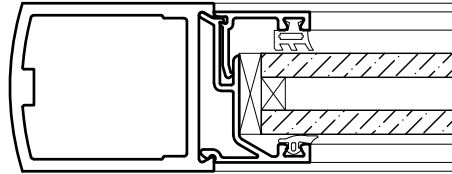
13/16" GLASS
 POCKET

1/2" THICK GLASS



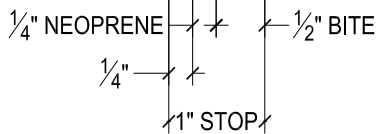
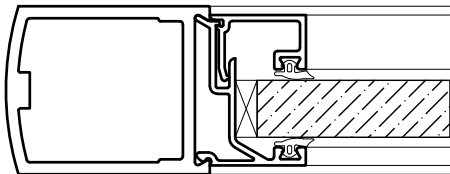
13/16" GLASS
 POCKET

7/8" THICK GLASS



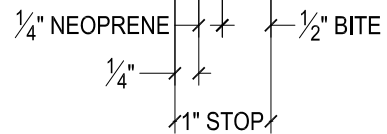
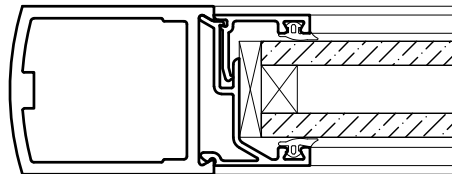
13/16" GLASS
 POCKET

5/8" THICK GLASS



13/16" GLASS
 POCKET

1" THICK GLASS



13/16" GLASS
 POCKET



825 ALLEN ST • JAMESTOWN, NY 14701 • (716) 664-3811 • WWW.DAWSONDOORS.COM

DRAWN BY:	AG	DRAWING DATE:	9/30/19
SET #:	GLAZING	DRAWING #:	004-01
DESCRIPTION:	GLAZING OPTIONS FOR ALUMINUM SERIES DOOR - EXTRUDED ALUMINUM GLASS STOPS		