

Dawson Thermally Broken
Ultra-Narrow Stile
Center Pivoted Single Door Entrance
Thermal Analysis Process Documentation

U-Factor Calculation Using Lawrence Berkeley National Laboratories

THERM Software & NFRC Procedure 100

Dawson Metal Company

825 Allen St.

Jamestown, NY 14701

Table of Contents

Initial Statements..... 2

Methodology 3

Simulation Conditions & Assumptions 4

 Exterior Conditions 4

 Interior Conditions..... 4

 Materials Used 4

 Thermal Bridging..... 4

Equations 5

Calculation Results..... 8

 Thermal Gradient Profiles..... 9

Initial Statements

This document details the approach and methods used by Dawson Doors to calculate the U-Value (a.k.a. thermal transmittance) for a U.N.S. Center Pivoted Single Door Entrance. The entrance is sized according to NFRC Procedure 100 as 37-3/4" inches wide and 82-3/8" inches tall.

The following details show the basic design for the door on which the calculation is based:

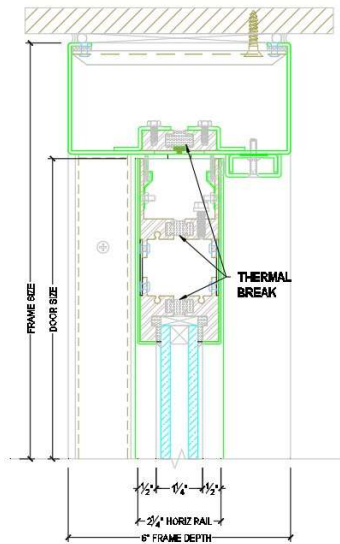


Figure 1: Standard Header

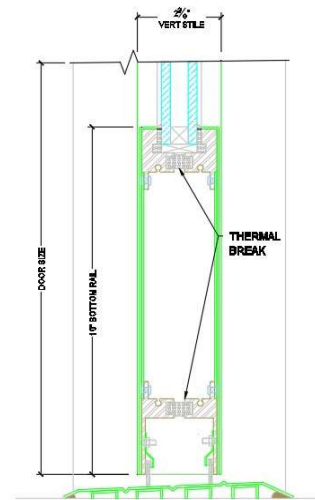


Figure 2: Standard Bottom Rail

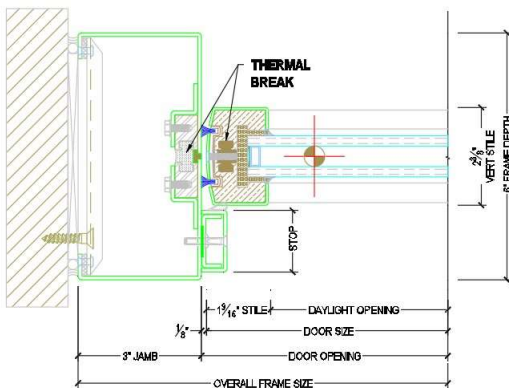


Figure 3: Standard Pivot Jamb & Stile

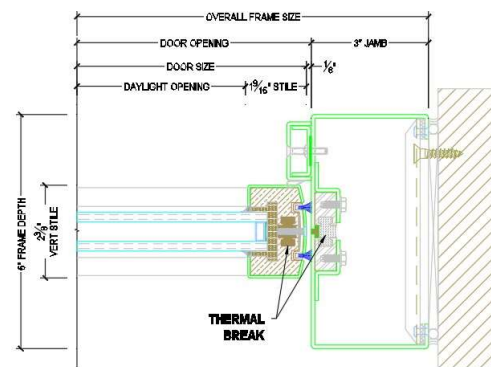


Figure 4: Standard Strike Jamb & Stile

Methodology

This analysis was performed in accordance with NFRC (National Fenestration Rating Council) Procedure 100 for determining the thermal transmittance of fenestration products, using approved software developed by the Lawrence Berkeley National Laboratories (LBNL). The software package used to conduct this analysis was LBNL THERM 7.7 (THERM). This piece of software is a Finite Element Analysis modeling tool that utilizes meshing matrices to break down complex geometry into small, simple elements. THERM uses an algorithm known as the Quadtree Method for Mesh Generation, which breaks each component into quadrants, and then those quadrants into further and further quadrants until the geometry is broken into “sufficiently small and sufficiently simple” elements. The mesh generation will achieve the goal of small and simple according to ISO 15099 which states: “The error between the theoretical U-Value and the computed U-Value is less than 1%.” Additional tools used to compute the U-Value are detailed throughout this report.

The NFRC Procedure 100 manual outlines the use of two-dimensional heat transfer analysis of the various profiles that make up the fenestration product. In order to accurately predict the heat transfer through the product, the geometry must be captured and analyzed. THERM is the 2-D heat transfer software used to conduct this analysis. THERM applies steady state thermal conditions to the boundaries of the fenestration product model. Conduction, convection and radiation are all included in this thermal analysis and the application of appropriate boundary conditions to accurate product geometry (internal and external) provides THERM with the inputs needed to calculate the relevant mode of heat transfer through the fenestration product.

The output from THERM is a U-Value for the individual components of the fenestration product, for a pair of Dawson Ultra-Narrow stile Center Pivoted Doors, those components are the Frame and the Door which are composed of sub components. The individual frame components include the Pivot Stiles along with the Pivot Jambs, Bottom Rail, Threshold, the Top Rail, and the Header. These components were combined according to Figures 5 and 6 where the header part of the frame is combined with the top rail of the door, the pivot jambs of the frame is combined with the pivot stile of the door, etc. This decision was made to ensure that the gap between the door and the frame, as well as the weather stripping that was designed to seal that gap, is all being accounted for in the analysis. The NFRC Procedure 100 states: “The use of a spreadsheet, in accordance with ISO150999 Section 4.1.4, is required to compute the total U-Value of the door using an area-weighted-average method of calculation.” According to this method, the U-Values for the components of the door are multiplied by the respective component areas and then divided by the total area of the door. The weighted U-Values are then added and the resulting total is the overall U-Value for the door system.

Simulation Conditions & Assumptions

The steady state thermal conditions applied to the outermost surfaces of the models in the simulations performed by Dawson were obtained from ISO 150999 Section 8.2 as well as NFRC Procedure 100 and are listed as:

Exterior Conditions

- T_{out} = exterior ambient temperature of -18°C (-0.4°F)
- V = wind speed of 5.5 m/s (12.3 mph)

Interior Conditions

- T_{in} = interior ambient temperature of 21.0°C (69.8°F)

Materials Used

- Door Pans –
 - Muntz Metal
- Door Structure –
 - Aluminum
- Thermal Break –
 - Urethane
- Glass –
 - 1" IGU composed of:
 - Sun Guard snx62/27 on 6mm clear- ½" Argon filled gap-6mm clear

Thermal Bridging

In order to ensure simulation accuracy, areas of the door where thermal bridging occurs were taken into consideration. The method for analyzing elements that bridge the thermal break is outlined in the NFRC THERM 7/ WINDOW 7 Simulation Manual under **Section 8.8 Non-Continuous Thermal Bridge Elements**. This section of the NFRC documentation identifies elements such as bolts, partially de-bridged, and thermally slotted cross sections. Dawson, following this manual used the K-Effective method of analysis which is a small weighted average formula that takes the thermal heat transfer coefficients for the relevant modes of heat transfer and averages them according to their area weights along the section of the door that contains those elements. A sample equation of how the K-Effective values are determined is included below in Equation (1).

$$K_{eff} = (F_b * K_b) + (F_n * K_n) \quad (1)$$

Where:

- K_{eff} = Weight Averaged Thermal Conductivity
- F_b = Fraction of area which is thermally bridged
- K_b = Thermal conductivity coefficient of bridging material
- F_n = Fraction of area which is not thermally bridged
- K_n = Thermal conductivity coefficient of non-bridging material

Equations

To calculate the weighted average for frame components U-Value in a Dawson Stile & Rail Center Pivoted Door, use Equation (2) presented below.

$$U_F = \frac{\sum[(U_H A_H), (U_{SP} A_{SP}), (U_{PJ} A_{PJ}), (U_{SS} A_{SS}), (U_{PS} A_{PS}), (U_{EGT} A_{EGT}), (U_{EGB} A_{EGB}), (U_{EGP} A_{EGP}), \dots]}{A_F} \quad (2)$$

Where:

- | | |
|--|---|
| • U_F = U-Frame | $A_F = \sum(A_H, A_{SP}, A_{SS}, A_{PJ}, A_{SJ}, A_{BR}, A_{TR}, A_{EGT}, A_{EGB}, A_{EGP}, A_{EGS})$ |
| • U_H = U-Header | A_H = Area of Header |
| • U_{SP} = U-Pivot Stile | A_{SP} = Area of Pivot Stile |
| • U_{SS} = U-Strike Stile | A_{SS} = Area of Strike Stile |
| • U_{PJ} = U-Pivot Jamb | A_{PJ} = Area of Pivot Jamb |
| • U_{SJ} = U-Strike Jamb | A_{SJ} = Area of Strike Jamb |
| • U_{BR} = U-Bottom Rail | A_{BR} = Area of Bottom Rail |
| • U_{TR} = U-Top Rail | A_{TR} = Area of Top Rail |
| • U_{EGT} = U-Edge of Glass Top | A_{EGT} = Area of Edge of Glass Top |
| • U_{EGB} = U-Edge of Glass Bottom | A_{EGB} = Area of Edge of Glass Bottom |
| • U_{EGP} = U-Edge of Glass Pivot Stile | A_{EGP} = Area of Edge of Glass Pivot Stile |
| • U_{EGS} = U-Edge of Glass Strike Stile | A_{EGS} = Area of Edge of Glass Strike Stile |

To calculate the weighted average for center of glazing U-Value in a Dawson Stile & Rail Center Pivoted Door, use Equation (3) presented below.

$$U_G = \frac{U_{CG} A_{CG}}{A_{CG}} \quad (3)$$

Where:

- U_G = U-Glass
- U_{CG} = U-Center of Glazing
- A_{CG} = Area Center or Glazing

To calculate the weighted average for the total U-Value Dawson Stile & Rail Center Pivoted Door, use Equation (4) presented below.

$$U_t = \frac{[\Sigma(U_f A_f) + \Sigma(U_g A_g)]}{A_t} \quad (4)$$

Where:

- U_T = Total product U-factor
- U_f = Frame U-factor
- U_g = Center-of-glazing U-factor
- A_T = Total fenestration area
- A_f = Frame Area
- A_g = Center-of-glazing Area

The U-values for the U_f and U_g are weighted averages that were pulled from Equations (2) and (3). The total area is simply the area of the entire entrance system, frame and doors combined. As stated in the Methodology section of the report, frame and the door stiles and rails have been combined to include the gap around the door and the weather stripping that seals that gap. In this way, a more comprehensive analysis of the door system is accomplished, not excluding major areas of thermal energy transfer.

To help gain a better understanding of the U Factors that have been mentioned, Figures 5 and 6 below point out the respective areas the U Factors are coming from.

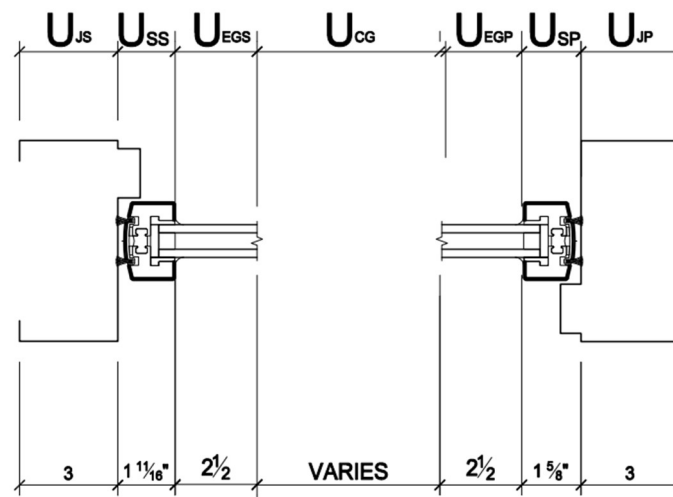


Figure 5: Component Section View Taken Along a Horizontal Section Line

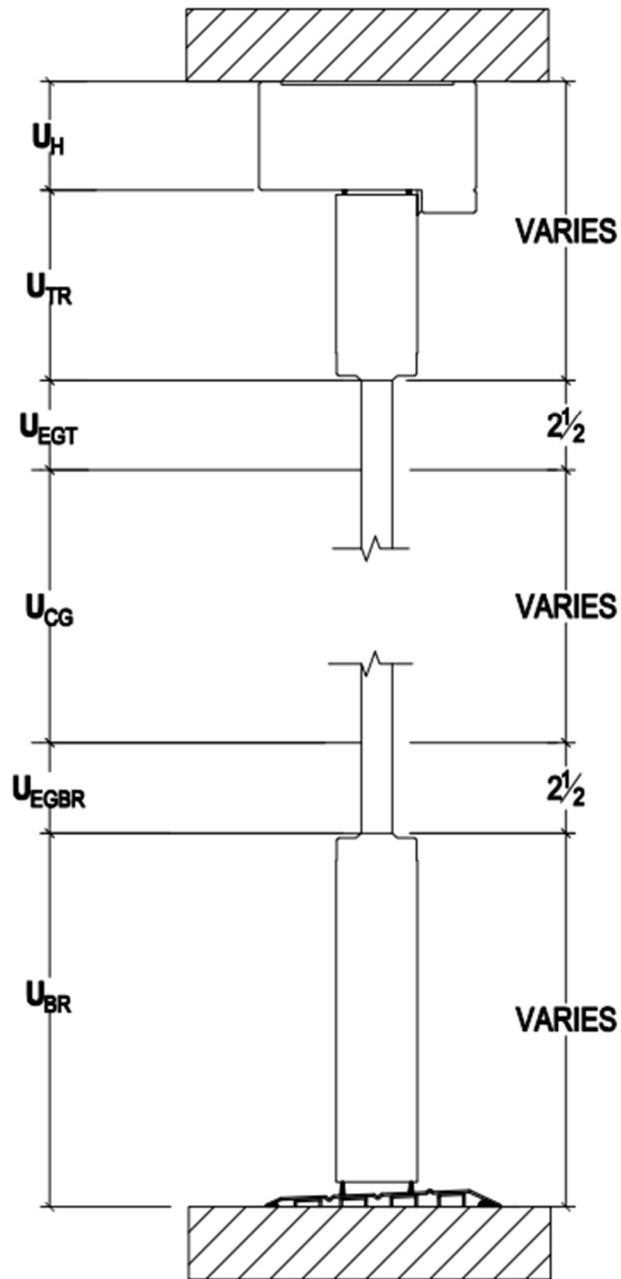


Figure 6: Component Section View Taken Along a Vertical Section Line

These calculations are provided by Dawson and are for informational purposes only. These calculations have not been certified by the NFRC. This report shall not be reproduced in any format other than this which has been provided by Dawson Metal Company (DMC) in its entirety without the consent of DMC.

Calculation Results

The result shown below was calculated in a spreadsheet which allows Dawson engineers to input sizes and component U-Values generated using THERM 7.7 program for all of the individual contributing components. This method provides Dawson engineers the ability to compute the Total Fenestration Product U-Value for any door, glass or hardware configuration. The “TOTAL SYSTEM U-VALUE” which is highlighted in the green cell represents the result for a standard NFRC size double entrance (82 3/8" x 37 3/4"), an increase in door size will result in the reduction in the overall U-value, shown in Figure 13 below.

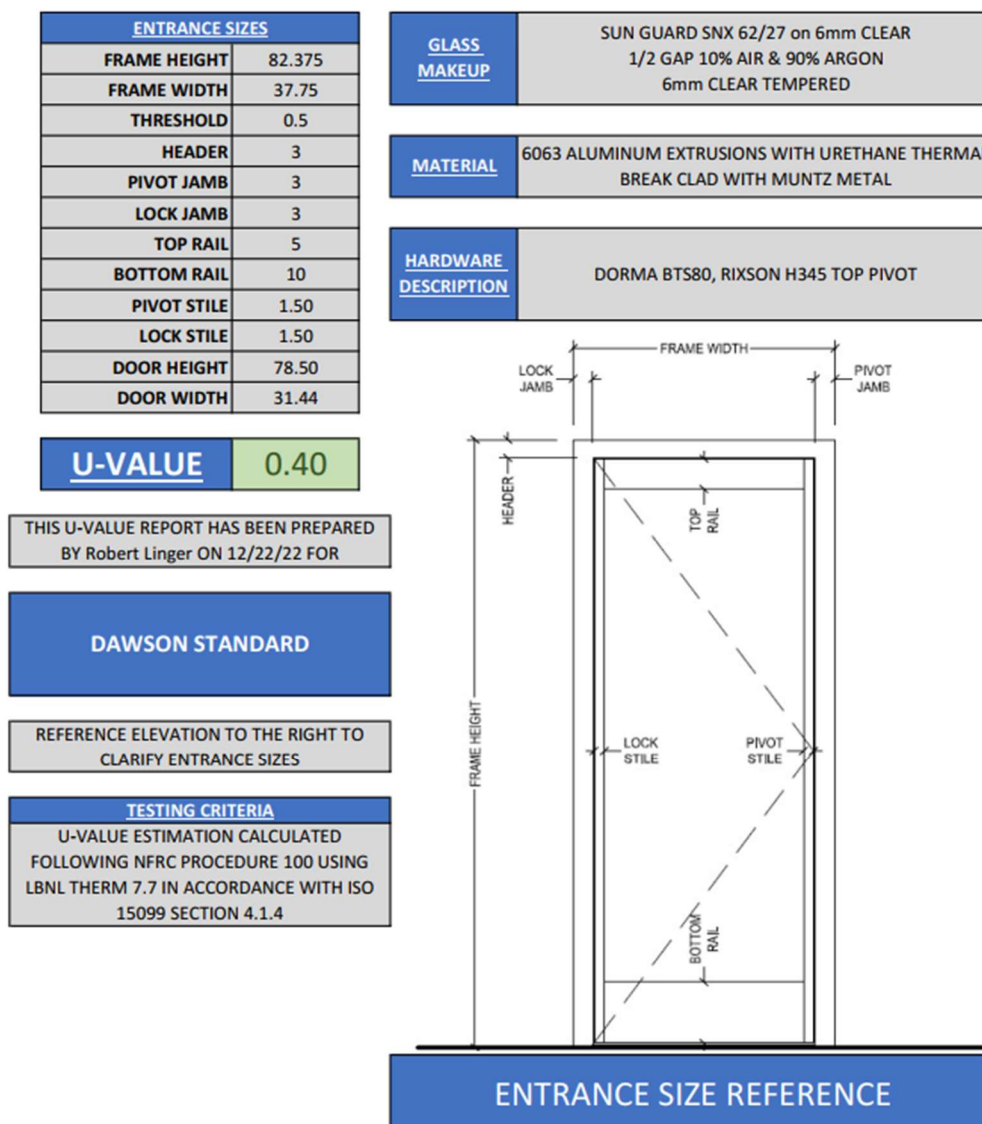


Figure 7: Results page from Excel Spreadsheet that brings in component sizes and performs the weighted average calculation described in Equations 2, 3, and 4.

Thermal Gradient Profiles

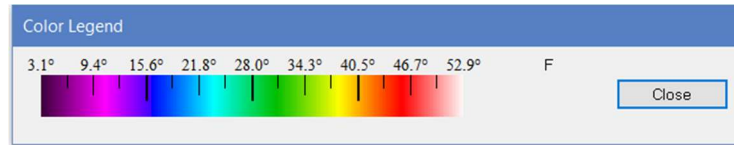
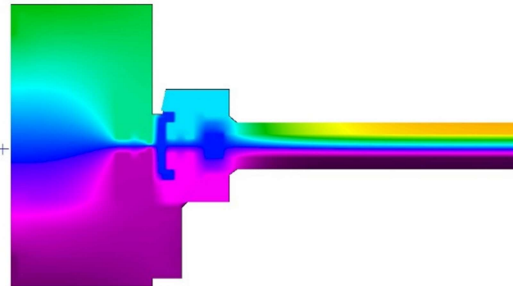


Figure 8: This temperature gradient applies to the following thermal images.

The screenshots shown in Figures 8, 9, 10, 11, and 12, which were taken from THERM, are assuming the steady state thermal conditions as discussed in the “Simulation Conditions and Assumptions” section of this report. The door was modeled as Muntz metal for this simulation, thus ensuring a worst-case scenario for materials offered, and a conservative heat transfer value.

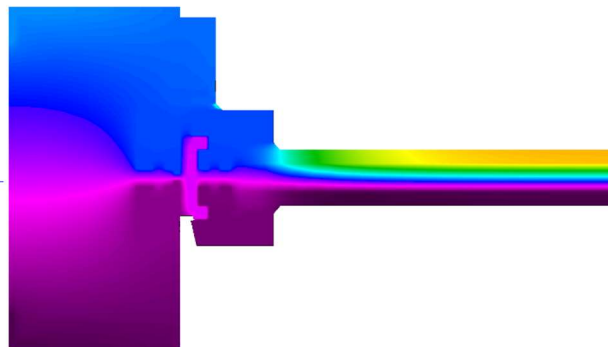
Interior



Exterior

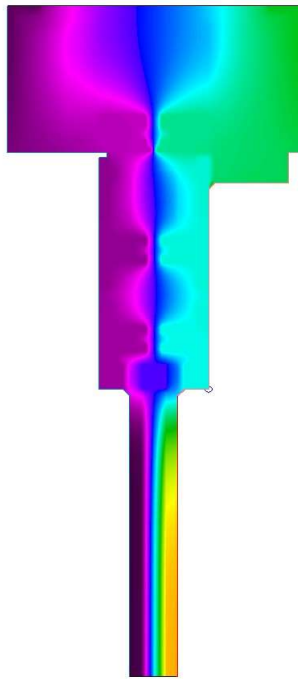
Figure 9: Pivot Jamb & Stile with edge of glass thermal profiles

Interior



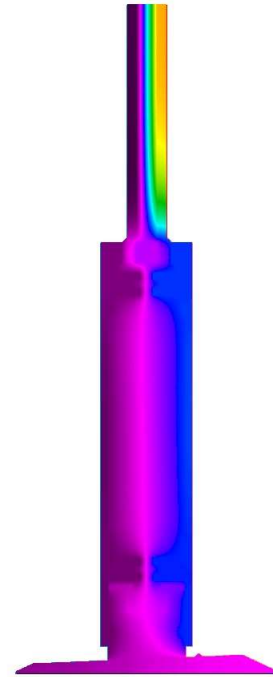
Exterior

Figure 10: Strike Jamb & Stiles with edge of glass thermal profile



Exterior Interior

Figure 11: Top rail and header with door stop.



Exterior Interior

Figure 12: Bottom rail and Threshold

		FRAME WIDTHS					
		35	37	39	41	43	45
FRAME HEIGHTS	83	0.41	0.40	0.40	0.40	0.39	0.39
	85	0.41	0.40	0.40	0.39	0.39	0.39
	87	0.41	0.40	0.40	0.39	0.39	0.38
	89	0.41	0.40	0.40	0.39	0.39	0.38
	91	0.41	0.40	0.40	0.39	0.39	0.38
	93	0.41	0.40	0.39	0.39	0.39	0.38
	95	0.40	0.40	0.39	0.39	0.38	0.38
	97	0.40	0.40	0.39	0.39	0.38	0.38
	99	0.40	0.40	0.39	0.39	0.38	0.38
	101	0.40	0.40	0.39	0.39	0.38	0.38
	103	0.40	0.40	0.39	0.39	0.38	0.38
	105	0.40	0.39	0.39	0.38	0.38	0.38
	107	0.40	0.39	0.39	0.38	0.38	0.38
	109	0.40	0.39	0.39	0.38	0.38	0.38
	111	0.40	0.39	0.39	0.38	0.38	0.37
	113	0.40	0.39	0.39	0.38	0.38	0.37
	115	0.40	0.39	0.39	0.38	0.38	0.37
	117	0.40	0.39	0.39	0.38	0.38	0.37
	119	0.40	0.39	0.38	0.38	0.38	0.37

Figure 13: Gradient Chart for Approximate U-Values of Various Size Doors & Frames